

STATISTICAL UPDATE: PORT VILA CENTRAL MARKET SURVEY

JUNE 2023

Release Date: 1st September 2023

The Port Vila Central Market Survey summarises selected agricultural produces sold at the main wet market based on the Supply and Price of commodities. Data is collected on a fortnightly basis, analysed and published as quarterly average and by commodity groups.

Summary of Findings:

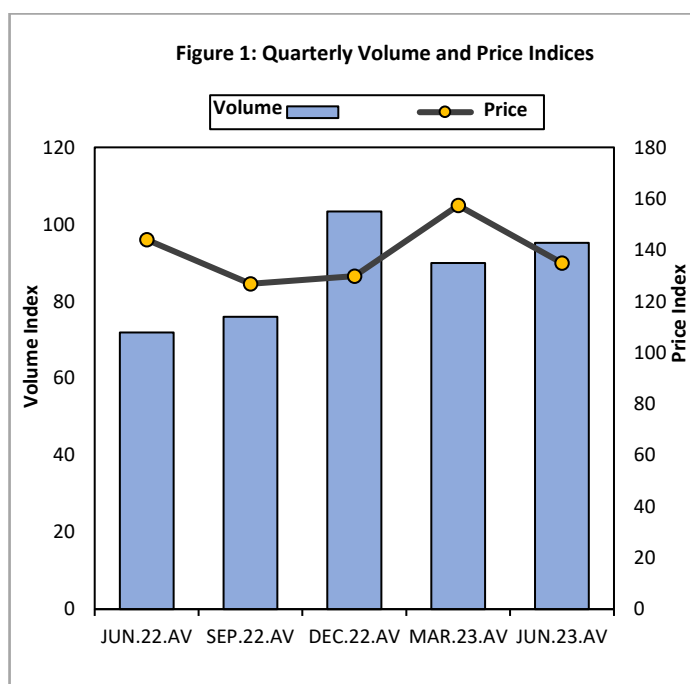
The Port Vila Market Survey of June quarter of 2023 showed an overall Volume increase of 6 percent on the supply of commodities while the overall price decreased by -20 percent compared to the previous quarter.

- ◆ Increase in the volume of staple produce and Vegetables produce supplied to the market contributed to the increase in the overall volume index compared to previous quarter.
- ◆ The value of commodities increased by 6 percent at VT1 Million.
- ◆ An average of 158 sellers was recorded for the quarter under review.

OVERVIEW

The Port Vila Market Survey in June quarter of 2023 showed an overall volume increase of 6 percent compared to the previous quarter. Staple produces and Vegetables produces contributed to the increase in the overall volume. (Refer to table 1 & 4).

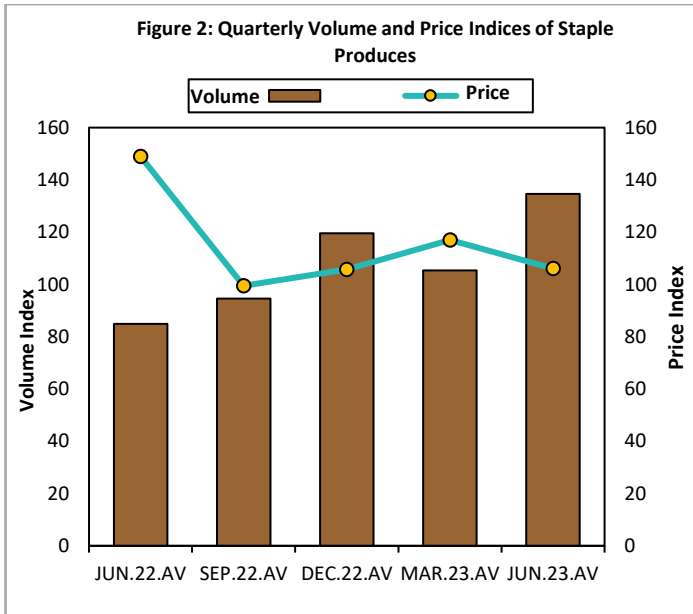
The overall price decreased by -20 percent compared to the previous quarter. Staple produces and fruits produce and vegetables produces contributed to the decrease in overall price. (Refer to table 2 & 5).



STAPLE FOOD PRODUCES

The supply of Staple food produces increased by 28 percent when compared to the previous quarter, while the average price decreased by -9 percent in the same quarter under review. Commodities that contributed to the increase in volume were Island Taro at 831 kilograms, Yam at 486 kilograms, Fiji Taro at 408 Kilograms and Dried coconut at 17 kilograms.

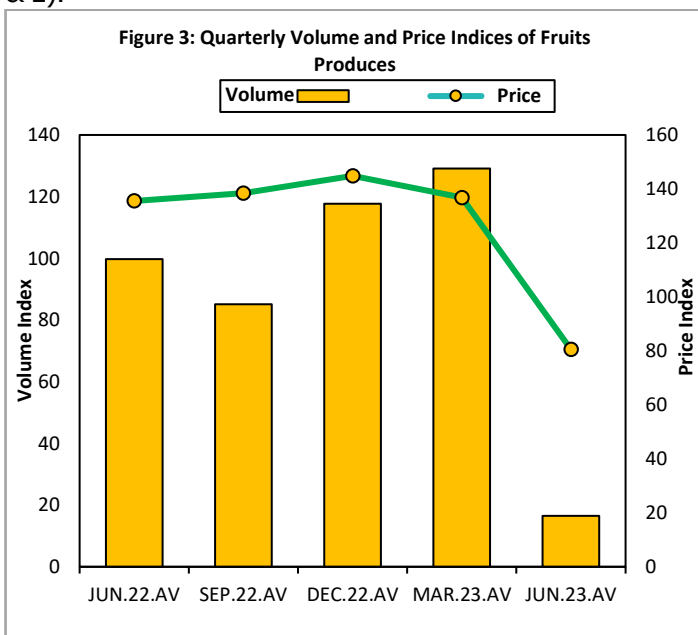
When compared to the same quarter of the previous year, the volume of Staple food increased by 59 percent, while it's weighted average price decreased by -29 percent. (Refer to table 1 & 2).



FRUIT PRODUCES

An overview of Fruits supplied to Port Vila Central Market in the quarter under review showed an overall decrease of -87 percent compared to the previous quarter. Fruits that contributed to the decrease in volume were, Ripe Banana at -99 percent, Pawpaw at -98 percent and green coconut at -10 percent. There were no Watermelon sold at the market during June quarter of 2023. The average price per kilograms of fruits produced decreased by -41 percent in the quarter under review.

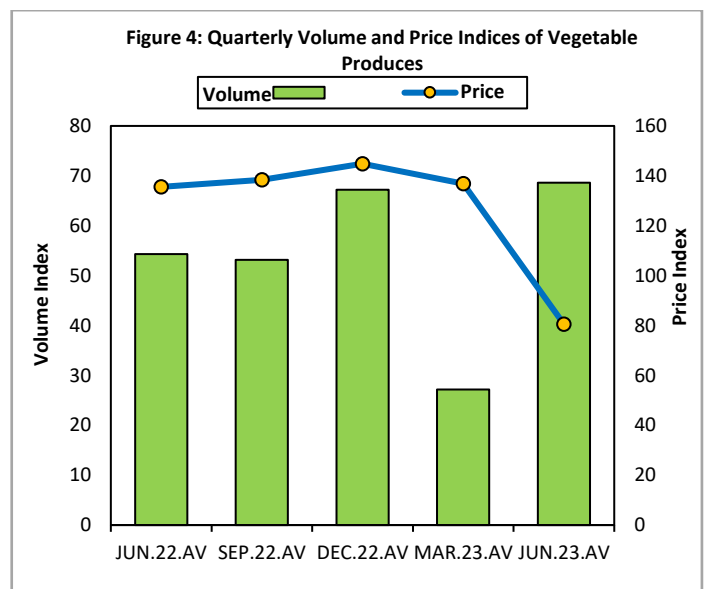
When compared to the same quarter of the previous year, the quantity supplied of fruits to the Central Market decreased by -83 percent and the average price per kilograms also decreased by -41 percent. (Refer to table 1 & 2).



VEGETABLE PRODUCES

The supply of Vegetables to the Port Vila Central Market in June quarter of 2023 recorded an overall increase of 82 Kilograms and the average price per kilograms decreased by -2 percent compared to the previous quarter. Vegetables that contribute to the increase in vegetables supplies includes, Chinese cabbage at 422 kilograms, cucumber at 404 kilograms, White bowl cabbage at 67 kilograms, lettuce at 23 kilograms, tomato at 18 kilograms, carrot and purple bowl cabbage at 1 kilogram each.

When compared to the same quarter of the previous year, the supply of vegetables supplied to the market increased by 26 percent and its average weighted price increased by 15 percent. (Refer to table 1 & 2).



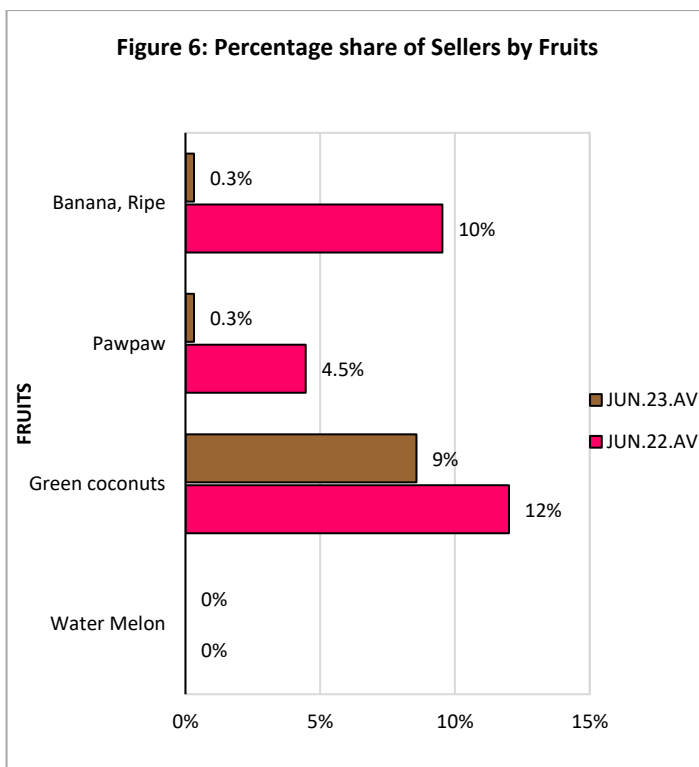
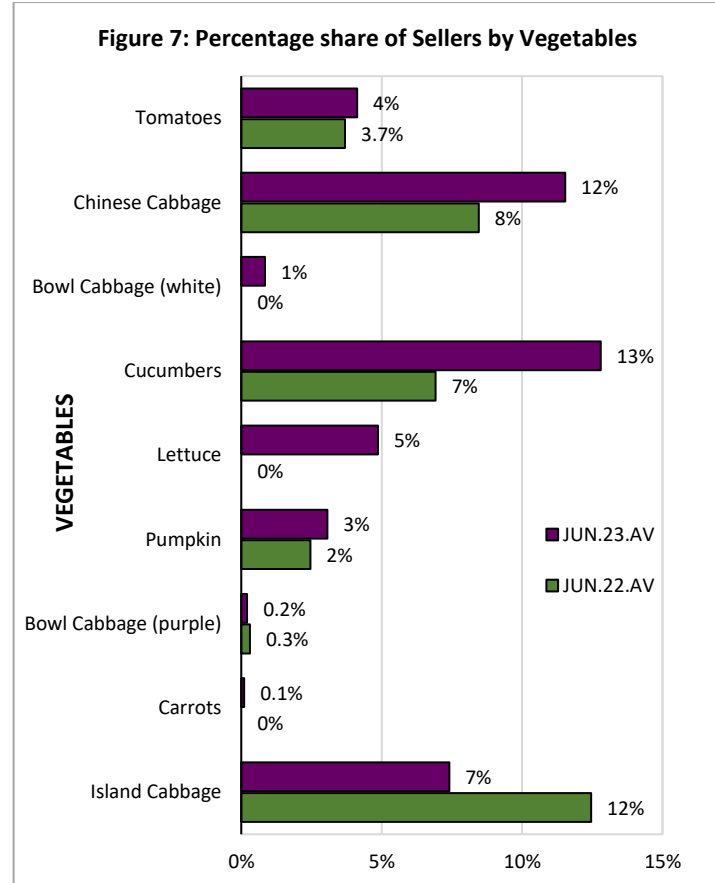
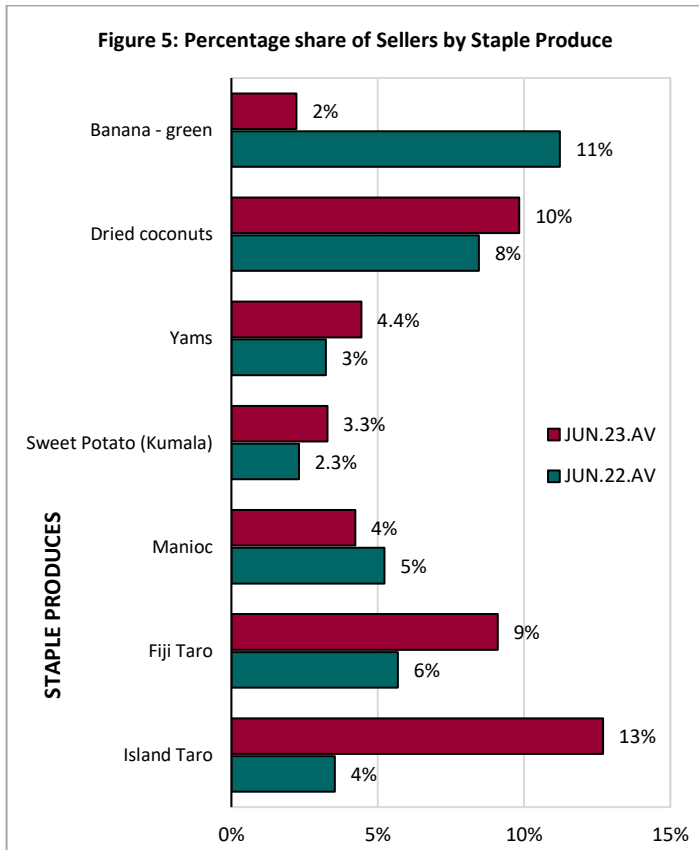
SELLERS PER COMMODITY GROUPS

June quarter of 2023 recorded a total average of 158 sellers¹ at the Port Vila Central Market which is an increase of 5 vendors when compared to the previous quarter and an increase of 50 vendors when compared to the same quarter of the previous year.

When compared to the previous quarter, Vegetables produce vendors increased by 42 vendors, Staple produce vendors increased by 11 vendors while Fruits produce vendors decreased by 49 vendors in the quarter under review.

¹ This is the total number of sellers at the market. However, one seller can sell more than 1 type of produce hence the analysis by sellers per produce.

When compared to June quarter of 2022, Staple food vendors increased by 29 vendors, Vegetables supply vendors increased by 34 vendors and Fruit supply vendors decreased by 14 vendors. (Refer to table 6).



VALUE OF SUPPLIES

The average value of commodities at the Port Vila Central Market in the quarter under review recorded a value of VT1,035,860. This is an overall increase of 6 percent compared to the previous quarter and a decrease of -3 percent in the same quarter of the previous year. (Refer to table 3)

CONCEPTS AND DEFINITIONS

The Port Vila Market Survey was instigated to measure the price and volume of specific agricultural produces in the main market. The survey is conducted on a fortnightly basis.

The data analysed in this report shows quarterly average supply and prices of the commodities under study. Weights are based on 2016 using HIES 2010 and Agriculture Census 2007 and were used henceforth.

NEXT UPDATE (QUARTERLY) RELEASE DATE

Quarter 3 2023

November 18th, 2023

PROVINCIAL STATISTICS OFFICES

Sanma Office

PO Box 273
MFEM Building,
Luganville, SANTO
Tel/Fax: (678) 36542

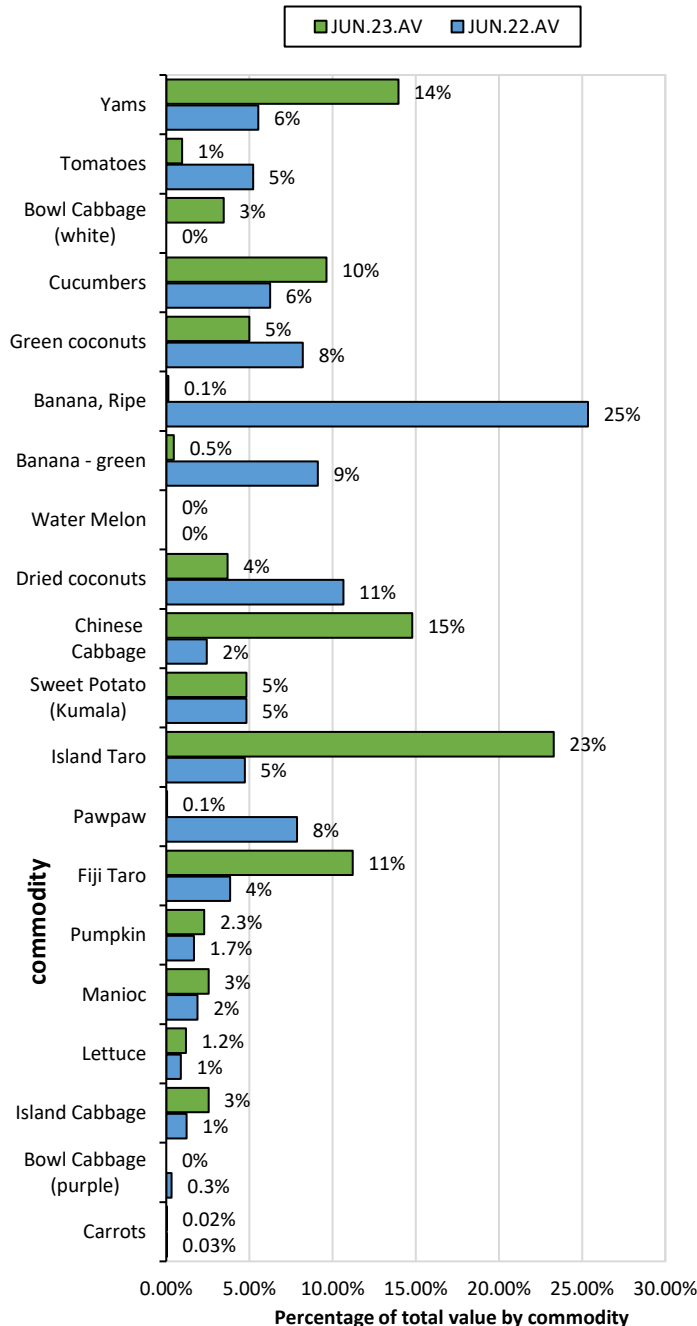
Tafea Office

MFEM Building,
Isangel TANNA
Tel: (678) 88014
Ext/VOIP: 8361

Malampa Office

MFEM Building,
Lakatoro, MALEKULA
Tel: (678) 48400
Ext/VIOP: 7475

Figure 8: Share of Value by Produces



Staple food registered the largest share in value at 60 percent. Staple produce increased by VT180,000 over the previous quarter and increased by VT187,000 compared to the same quarter of the previous year. Vegetables produce registered the second highest share in value at 35 percent. Vegetables produce increased by VT212,000 over the previous quarter and VT168,000 over the same quarter of the previous year. Fruits produce shared the least in value at 5 percent. Fruits produced decreased by VT335,000 in value over the previous quarter and VT389,000 over the same quarter of the previous year.



Mr. KAP Calo Andy
Chief Statistician

QUARTERLY AVERAGE

Table 1: Quantity Supplied (in kilograms)

PRODUCE	2016.AVE	JUN.22.AV	SEP.22.AV	DEC.22.AV	MAR.23.AV	JUN.23.AV	Jun-23	
							% chng from prev qtr	% chng from Jun 22
STAPLE PRODUCE	467	396	441	558	492	629	28	59
Fiji Taro	74	317	484	674	389	797	105	152
Island Taro	550	214	305	209	710	1541	117	621
Manioc	534	252	424	342	507	350	-31	39
Sweet Potato (Kumala)	954	334	537	1161	330	322	-3	-4
Yam	250	157	230	191	107	594	452	279
Banana - green	255	835	543	731	682	63	-91	-92
Dried coconut	650	666	567	600	718	735	2	10
FRUITS	440	439	374	518	568	73	-87	-83
Banana, Ripe	435	913	967	1063	873	12	-99	-99
Pawpaw	568	364	147	188	205	4	-98	-99
Water Melon	448	0	0	561	890	0	-100	890
Green coconut	309	478	383	260	305	274	-10	-43
VEGETABLE PRODUCE	198	108	105	133	54	136	153	26
Bowl Cabbage (white)	309	252	95	225	0	67	67	-73
Bowl Cabbage (purple)	53	18	5	32	0	1	1	-94
Carrot	78	10	9	23	0	1	1	-93
Chinese Cabbage	543	133	179	133	40	462	1048	247
Cucumber	343	292	171	180	49	452	832	55
Pumpkin	45	98	181	280	156	109	-30	11
Island Cabbage	171	68	141	136	222	74	-66	9
Lettuce	45	13	101	71	10	32	238	142
Tomato	198	85	66	120	9	27	206	-69

Table 2: Weighted Average Price Per Kilograms (in Vatu)

PRODUCE	2016.AVE	JUN.22.AV	SEP.22.AV	DEC.22.AV	MAR.23.AV	JUN.23.AV	% chng	
							from prev qtr	from Jun 22
STAPLE PRODUCE	121.41	181	121	128	142	129	-9	-29
Fiji Taro	137.18	130	99	110	122	145	19	12
Island Taro	185.86	236	172	208	271	156	-42	-34
Manioc	55.14	80	75	82	77	76	-2	-6
Sweet Potato (Kumala)	73.13	155	106	109	87	155	78	0
Yam	224.09	378	221	234	291	243	-16	-36
Banana - green	118.47	117	130	110	100	75	-25	-36
Dried coconut	56	171	44	46	46	52	13	-70
FRUITS	131.34	178	182	190	180	106	-41	-41
Banana, Ripe	128.86	297	194	175	128	113	-12	-62
Pawpaw	78.85	231	228	185	179	121	-32	-47
Water Melon	184.57	0	0	206	196	0	-100	-100
Green coconut	133.09	184	306	196	216	189	-12	3
VEGETABLE PRODUCE	236.06	265	277	306	311	304	-2	15
Bowl Cabbage (white)	218.28	0	382	248	0	531	100	-100
Bowl Cabbage (purple)	209.97	191	0	248	0	0	-100	-100
Carrot	164.8	33	235	414	0	331	100	70
Chinese Cabbage	133.48	195	170	187	540	331	-39	45
Cucumber	200.67	229	340	263	484	221	-54	21
Pumpkin	145.18	183	128	131	212	217	2	13
Island Cabbage	218.16	191	176	168	264	354	34	-50
Lettuce	521.8	707	594	667	482	378	-22	-42
Tomato	312.23	656	469	425	818	373	-54	-43

Table 3: Value of Supplies (in Vatu thousands)

PRODUCE	Total Value 2016	JUN.22.AV	SEP.22.AV	DEC.22.AV	MAR.23.AV	JUN.23.AV	% chng from prev qtr	% chng from Jun 22
STAPLE PRODUCE	1352.9	434	335	424	441	621	41	43
Fiji Taro	38.6	41	48	74	47	116	145	182
Island Taro	422.4	50	53	44	193	241	25	378
Manioc	113.8	20	32	28	39	26	-32	31
Sweet Potato (Kumala)	281.1	52	57	126	29	50	73	-3
Yam	216	59	51	45	31	145	363	144
Banana - green	130.3	97	70	80	68	5	-93	-95
Dried coconut	150.8	114	25	27	33	38	16	-66
FRUITS	946.1	443	338	387	388	54	-86	-88
Banana, Ripe	256.3	271	188	186	111	1	-99	-100
Pawpaw	206	84	33	35	37	1	-99	-99
Water Melon	315.7	0	0	115	174	0	-100	0
Green coconut	168.2	88	117	51	66	52	-21	-41
VEGETABLE PRODUCE	1421.3	193	266	304	149	361	143	87
Bowl Cabbage (white)	184.1	0	36	56	0	36	36	36
Bowl Cabbage (purple)	61.4	3	0	8	0	0	0	-100
Carrot	65.8	0	2	10	0	0	0	-26
Chinese Cabbage	309.5	26	31	25	22	153	605	490
Cucumber	269.5	67	58	47	24	100	324	49
Pumpkin	27.5	18	23	37	33	24	-29	32
Island Cabbage	166.4	13	25	23	59	26	-55	102
Lettuce	95.3	9	60	48	5	12	165	29
Tomato	241.9	56	31	51	7	10	40	-82
	3720.4	1070	939	1115	978	1035	6	-3

**on the days surveyed*

Table 4: Volume Index (2016 = 100)

PRODUCE	2016 Weights	JUN.22.AV	SEP.22.AV	DEC.22.AV	MAR.23.AV	JUN.23.AV	% chng from prev qtr	% chng from Jun 22
STAPLE PRODUCE	0.36	85	95	120	105	135	28	59
Fiji Taro	0.01	426	652	908	524	1073	105	152
Island Taro	0.11	39	55	38	129	280	117	621
Manioc	0.03	47	79	64	95	66	-31	39
Sweet Potato (Kumala)	0.08	35	56	122	35	34	-3	-4
Yam	0.06	63	92	76	43	237	452	279
Banana - green	0.04	328	213	287	268	25	-91	-92
Dried coconut	0.04	102	87	92	110	113	2	10
FRUITS	0.25	100	85	118	129	16	-87	-83
Banana, Ripe	0.07	140	149	245	201	3	-99	-98
Pawpaw	0.06	83	33	33	36	1	-98	-99
Water Melon	0.08	0	0	125	199	0	-100	0
Green coconut	0.05	84	67	84	99	89	-10	5
VEGETABLE PRODUCE	0.38	54	53	67	27	69	153	26
Bowl Cabbage (white)	0.05	44	17	73	0	22	22	-51
Bowl Cabbage (purple)	0.02	4	1	60	0	2	2	-54
Carrot	0.02	3	3	30	0	1	1	-71
Chinese Cabbage	0.08	67	90	25	7	85	1048	27
Cucumber	0.07	94	55	53	14	132	832	39
Pumpkin	0.01	184	340	621	346	241	-30	31
Island Cabbage	0.04	87	181	79	130	43	-66	-50
Lettuce	0.03	2	19	160	21	72	238	2844
Tomato	0.07	25	19	61	4	13	206	-46
	1	72	76	103	90	95	6	32

Table 5: Price Index (2016 = 100)

PRODUCE	2016 Weights	JUN.22.AV	SEP.22.AV	DEC.22.AV	MAR.23.AV	JUN.23.AV	% chng from prev qtr	% chng from Jun 22
STAPLE PRODUCE	0.36	149	99	106	117	106	-9	-29
Fiji Taro	0.01	95	72	80	89	106	19	12
Island Taro	0.11	127	93	112	146	84	-42	-34
Manioc	0.03	145	136	148	140	137	-2	-6
Sweet Potato (Kumala)	0.08	211	145	148	119	212	78	0
Yam	0.06	169	99	104	130	109	-16	-36
Banana - green	0.04	99	109	93	84	63	-25	-36
Dried coconut	0.04	306	79	82	82	93	13	-70
FRUITS	0.25	136	138	145	137	81	-41	-41
Banana, Ripe	0.07	231	150	136	99	87	-12	-62
Pawpaw	0.06	293	289	234	228	154	-32	-47
Water Melon	0.08	0	0	111	106	0	-100	0
Green coconut	0.05	138	230	147	162	142	-12	3
VEGETABLE PRODUCE	0.38	112	117	130	132	129	-2	15
Bowl Cabbage (white)	0.05	0	175	114	0	243	100	100
Bowl Cabbage (purple)	0.02	91	0	118	0	0	0	-100
Carrot	0.02	20	143	251	0	201	100	909
Chinese Cabbage	0.08	146	128	140	404	248	-39	70
Cucumber	0.07	114	170	131	241	110	-54	-4
Pumpkin	0.01	126	88	90	146	150	2	19
Island Cabbage	0.04	88	81	77	121	162	34	85
Lettuce	0.03	135	114	128	92	72	-22	-47
Tomato	0.07	210	150	136	262	120	-54	-43
	1	144	127	130	157	126	-20	-12

Table 6: Number of Sellers

PRODUCE	2016 AVE	JUN.22.AV	SEP.22.AV	DEC.22.AV	MAR.23.AV	JUN.23.AV	% chng from prev qtr	% chng from Jun 22
STAPLE PRODUCE	46	43	64	80	61	72	19	68
Fiji Taro	3	6	12	16	8	14	79	132
Island Taro	3	4	6	6	6	20	233	422
Manioc	8	6	7	6	6	7	5	18
Sweet Potato (Kumala)	11	3	5	12	5	5	3	107
Yam	4	4	5	4	3	7	121	100
Banana - green	9	12	17	24	20	4	-83	-71
Dried coconut	10	9	12	12	12	16	27	69
FRUITS	35	28	38	73	63	15	-77	-49
Banana, Ripe	15	10	16	29	32	1	-98	-95
Pawpaw	14	5	7	25	15	1	-97	-90
Water Melon	1	0	0	2	2	0	-100	0
Green coconut	5	13	15	17	14	14	-5	4
VEGETABLE PRODUCE	57	37	79	101	29	71	144	91
Bowl Cabbage (white)	4	0	4	9	0	1	0	0
Bowl Cabbage (purple)	2	0	0	2	0	0	0	0
Carrot	1	0	18	2	0	0	0	0
Chinese Cabbage	16	9	8	6	2	18	990	98
Cucumber	10	8	12	20	4	20	450	169
Pumpkin	2	3	7	18	5	5	7	81
Island Cabbage	11	14	12	15	15	12	-23	-14
Lettuce	4	0	9	6	1	8	1433	8
Tomato	7	4	9	23	4	7	86	63
	138	108	181	253	153	158	3	45