

## STATISTICS UPDATE: CONSUMER PRICE INDEX

RELEASE DATE: 22<sup>nd</sup> of April, 2022.

### DECEMBER QUARTER 2021 HIGHLIGHTS

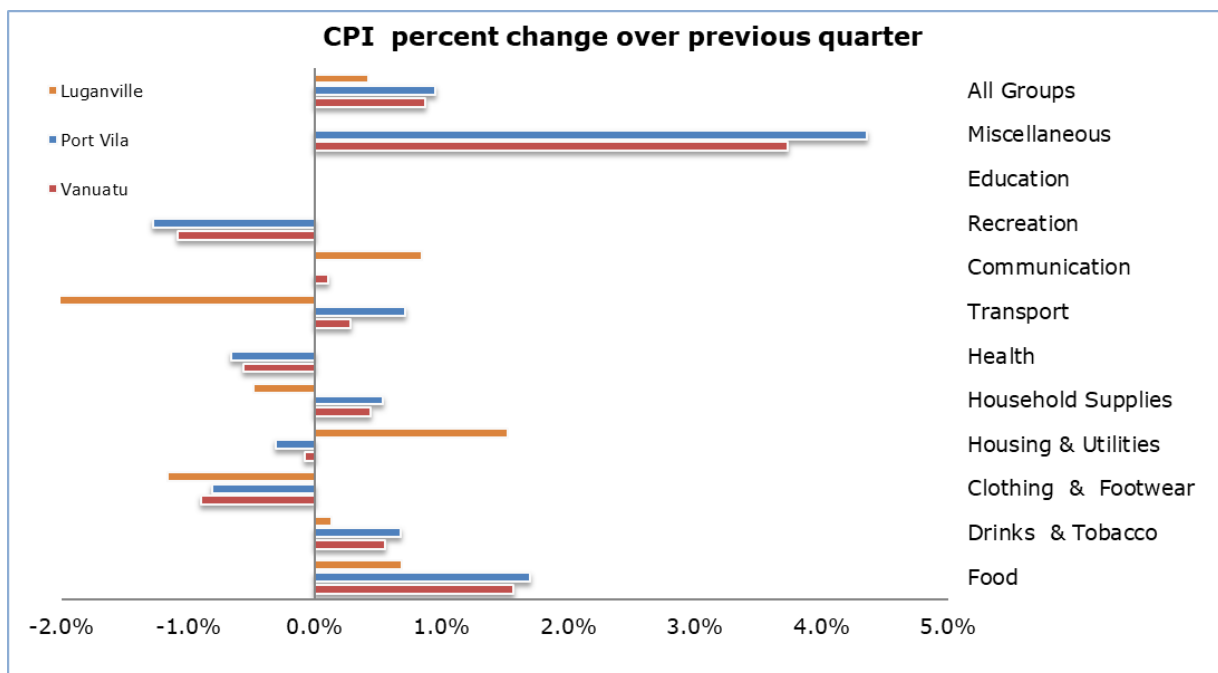


Figure 1: CPI per cent change over previous quarter

### CPI QUARTERLY MOVEMENT

The Consumer Price Index (CPI) of December, 2021 indicated an increase of (+0.9%). Port Vila increased by (+0.9%) and Luganville by (+0.4%) compared to the previous quarter. The expenditure groups that contributed to the increase in the CPI were: Miscellaneous (+3.7), Food (+1.6%), Drinks and Tobacco (+0.6%), Household Supplies (+0.4%), Transport (+0.3%), and Communication (+0.1%). Education remains constant, while the group that decreases in price were Recreation (-1.1%), Clothing and Footwear (-0.9%), Health (-0.6%) and Housing Utilities (-0.1%). The increase in price movement was driven by price changes Toiletries and Personal care products, Meat and sea food, imported wine, furniture's, automotive fuel and oil (Petrol & Diesel for both region).

## CPI ANNUAL MOVEMENT

When compared to the December, quarter of 2020, the Vanuatu index increased by (+0.7%). Port Vila index increased by (+0.9%) while Luganville index decreased by (-0.9%). At national level the expenditure groups that contributed to the increase over the same quarter of last year were: Miscellaneous (+3.1%), Transport (+2.5%), Food (+1.1%), Drinks and Tobacco (+1.0%), Education (+0.3%), and Housing Utilities (+0.1%). The increase in these expenditure groups were driven by the increase in price movements of Personal accessories (wallets and ladies' bag for Port Vila region), automotive oil and fuel, (Petrol and Diesel for both region) Root crops and Fruits and Vegetables, Tobacco and Imported wine.

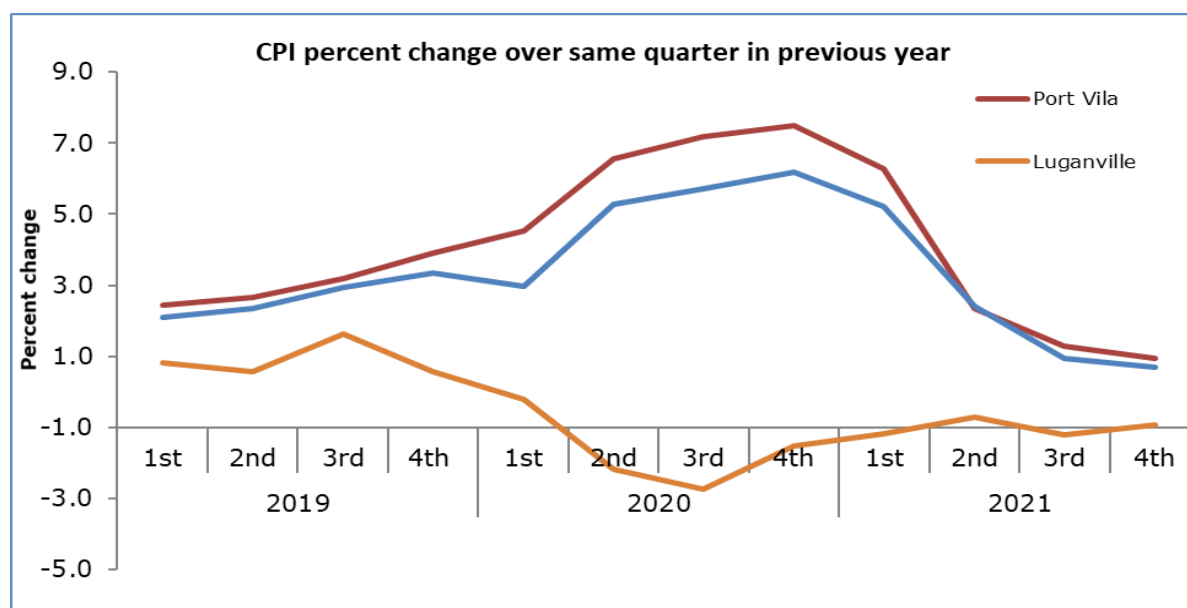


Figure 2: CPI per cent change over same quarter in previous year

'Underlying inflation' is a measure derived from the CPI excluding items which typically have unstable or volatile prices; because of things like seasonal variation or policy decisions. In December quarter of 2021 underlying inflation increased by (+0.4%) over the previous quarter and decreased by (-0.3%) over the same quarter of 2020.

## CONCEPTS AND DEFINITIONS

The Consumer Price Index (CPI) is used to measure the changes in the prices of goods and services purchased by households in Port Vila and Luganville over a period of time. The separate indices for these two major commercial centres are then combined to create the Vanuatu CPI.

This change in prices is sometimes called inflation. Retail stores, supermarkets, liquor outlets, transport operators, service stations and other providers of goods and services help supply the Vanuatu National Statistics Office with the information to calculate the CPI. Prices are collected for exactly the same goods and services each quarter. This ensures that changes in the cost of goods and services over time are not due to changes in the quantity or quality of the goods and services purchased.

## ATTACHMENT

Table 1 Consumer Price Index: All Items

Table 2 Consumer Price Index: Expenditure Groups

### NEXT UPDATE (QUARTERLY)

March 2022

### RELEASE DATE

6<sup>th</sup> of May, 2022.

## MORE INFORMATION

For statistical enquiries about this topic, please contact:

National Statistics Office: (678) 33040, Voip: 1124

Email: [stats@vanuatu.gov.vu](mailto:stats@vanuatu.gov.vu)

## PROVINCIAL STATISTICS OFFICES

### Sanma Office

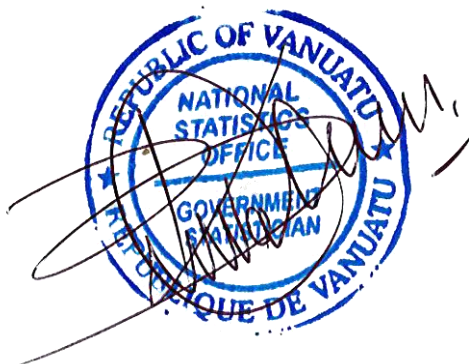
PO Box 273, MFEM Building  
Luganville, SANTO  
Tel/Fax: (678) 36542  
Ext/voip: 6330

### Tafea Office

MFEM Building,  
Isangel, Tafea  
Tel: (678) 88014  
Ext/voip: 8361

### Malampa Office

MFEM Building  
Lakatoro, Malekula  
Tel: (678) 48400



**Mr. Benuel Lenge**

**Government Statistician**

**Table 1 Consumer Price Index****Base: 1st Quarter 2000 = 100****Tableau 1 Indice des prix à la consommation****Base: 1<sup>er</sup> Trimestre 2000 = 100**

Consumer Price Indices					Underlying Inflation Index Inflation sous-jacente Total / Global	Rate of Change (%)			Rate of Change (%)			Année	Trimestre
Year	Quarter	Indice des prix à la consommation				Variation par rapport			Variation				
		Total / Global	Port Vila	Luganville	Total / Global	Port Vila	Luganville	Total / Global	Port Vila	Luganville			
						<b>Over Previous Year / à l'année précédente</b>			<b>4th Quarter over 4th Quarter of previous year / du 4ème trimestre au 4ème trimestre de l'année précédente</b>				
2017		151.2	152.6	144.7	133.3	3.1	3.7	0.1	3.3	3.8	0.7	2017	
2018		154.8	157.0	144.1	135.2	2.3	2.9	-0.4	1.9	2.3	0.2	2018	
2019		159.0	162.0	145.4	136.3	2.8	3.2	0.9	3.5	4.1	0.6	2019	
2020		167.5	172.7	143.1	135.8	5.3	6.6	-1.6	6.6	8.1	-1.5	2020	
2021		171.4	177.7	141.6	134.4	2.3	2.9	-1.0	0.7	-0.9	-0.4	2021	
						<b>Over Previous Quarter / au trimestre précédent</b>			<b>Over Same Quarter of previous year / au même trimestre de l'année précédente</b>				
2019	1st	157.0	159.8	144.8	136.3	0.9	1.1	0.3	2.1	2.4	0.8	2019 1er	
	2nd	158.1	160.9	145.0	135.9	0.7	0.7	0.1	2.3	2.7	0.6	2ème	
	3rd	160.0	162.8	146.7	136.5	1.2	1.2	1.2	2.9	3.2	1.6	3ème	
	4th	161.0	164.4	145.2	136.6	0.6	1.0	-1.0	3.4	3.9	0.6	4ème	
2020	1st	161.8	165.5	144.5	137.1	0.5	0.7	-0.5	3.0	4.5	-0.2	2020 1er	
	2nd	166.9	172.2	141.9	135.3	3.1	3.9	-1.8	5.3	6.6	-2.2	2ème	
	3rd	169.7	175.4	142.8	135.2	1.6	1.8	0.6	5.7	7.2	-2.7	3ème	
	4th	171.6	177.7	143.0	135.4	1.1	1.3	0.1	6.2	7.5	-1.5	4ème	
2021	1st	170.7	176.6	142.8	134.8	-0.5	-0.6	-0.1	5.2	6.3	-1.2	2021 1er	
	2nd	170.9	177.2	140.9	133.8	0.1	0.3	-1.3	2.4	2.3	-0.7	2ème	
	3rd	171.3	177.7	141.1	134.2	0.2	0.3	0.1	0.9	1.3	-1.2	3ème	
	4th	172.8	179.4	141.7	134.8	0.9	0.9	0.4	0.7	0.9	-0.9	4ème	

Table 2 Consumer Price Indices by Expenditure Group Tableau 2 Indice des prix à la consommation par poste de dépense													Base: 1st Quarter 2000 = 100 Base: 1 <sup>er</sup> Trimestre 2000 = 100		
Year	Quarter	Food Produits alimentaires	Alcoholic drinks and Tobacco Boisson alcoolisée et tabac	Clothing & Footwear Habillement	Housing & Utilities Loyer, eau, et énergie etc.	Household Supplies Mobilier et équipement ménager etc.	Health Santé	Transport	Communication	Recreation Loisir	Education	Miscellaneous Autres	All Groups Indice Global	Année	Trimestre
<b>Vanuatu</b>															
2019	1st	181.1	187.3	112.8	136.2	113.4	103.2	173.2	95.2	136.4	110.9	114.7	157.0	2019	1 <sup>er</sup>
	2nd	184.2	187.3	112.7	135.0	113.5	103.2	172.8	95.2	137.6	110.9	113.9	158.1		2 <sup>ème</sup>
	3rd	188.8	187.3	112.3	135.1	114.4	103.2	172.9	95.7	137.6	110.9	114.0	160.0		3 <sup>ème</sup>
	4th	191.4	187.2	113.0	135.6	113.8	103.3	172.9	95.7	137.0	110.9	112.9	161.0		4 <sup>ème</sup>
2020	1st	193.3	188.3	113.4	135.6	114.1	103.6	172.9	95.9	136.2	111.3	111.8	161.8	2020	1 <sup>er</sup>
	2nd	206.5	188.0	116.7	135.2	115.3	107.9	171.9	95.9	135.5	111.3	112.7	166.9		2 <sup>ème</sup>
	3rd	213.1	192.0	115.8	135.9	114.1	109.1	171.4	95.9	136.0	111.3	112.7	169.7		3 <sup>ème</sup>
	4th	217.8	195.5	112.0	135.0	113.7	107.2	174.3	96.8	137.6	111.3	113.1	171.6		4 <sup>ème</sup>
2021	1st	216.0	195.4	111.2	133.9	113.8	107.2	175.8	96.0	137.7	111.6	112.7	170.7	2021	1 <sup>er</sup>
	2nd	216.2	195.8	111.6	134.3	113.0	106.3	177.4	94.7	137.9	111.6	113.1	170.9		2 <sup>ème</sup>
	3rd	216.8	196.3	111.8	135.2	112.5	106.4	178.1	94.7	138.3	111.6	112.4	171.3		3 <sup>ème</sup>
	4th	220.2	197.4	110.8	135.1	113.0	105.8	178.6	94.8	136.8	111.6	116.6	172.8		3 <sup>ème</sup>
<b>Port Vila</b>															
2019	1st	189.7	193.7	112.3	130.4	112.0	102.8	175.3	94.1	139.3	115.8	117.2	159.8	2019	1 <sup>er</sup>
	2nd	193.5	193.7	112.7	130.2	112.1	102.8	174.8	94.1	140.7	115.8	116.5	160.9		2 <sup>ème</sup>
	3rd	198.4	193.7	111.8	130.0	113.1	102.8	174.8	94.1	140.7	115.8	116.5	162.8		3 <sup>ème</sup>
	4th	202.7	193.7	112.8	130.8	112.4	102.8	174.8	94.7	139.9	115.6	115.6	164.4		4 <sup>ème</sup>
2020	1st	205.2	195.4	113.4	130.9	112.8	103.2	174.9	94.7	139.2	116.1	114.1	165.5	2020	1 <sup>er</sup>
	2nd	223.2	195.4	117.5	131.0	112.9	108.0	173.4	94.7	138.3	116.1	115.1	172.2		2 <sup>ème</sup>
	3rd	231.1	200.5	116.4	131.0	112.9	109.4	173.0	94.7	138.9	116.1	115.1	175.4		3 <sup>ème</sup>
	4th	237.0	205.1	111.7	130.0	112.4	107.3	176.4	95.7	140.8	116.1	115.5	177.7		4 <sup>ème</sup>
2021	1st	234.5	205.1	111.1	129.3	112.3	107.2	178	94.8	140.9	116.5	115.1	176.6	2021	1 <sup>er</sup>
	2nd	234.7	205.2	111.7	131.2	113.3	106.2	179.7	94.6	141.1	116.5	115.5	177.2		2 <sup>ème</sup>
	3rd	235.3	206.7	111.8	132.2	110.7	106.3	180.7	94.6	141.6	116.5	114.7	177.7		3 <sup>ème</sup>
	4th	239.3	208.1	110.9	131.8	111.3	105.6	182.0	94.6	139.8	116.5	119.7	179.4		3 <sup>ème</sup>
<b>Luganville</b>															
2019	1st	148.7	158.8	114.9	164.4	121.2	106.5	162.1	102.1	120.2	94.0	98.8	144.8	2019	1 <sup>er</sup>
	2nd	149.2	158.6	114.2	164.5	121.8	106.5	162.6	102.1	120.2	94.0	97.4	145.1		2 <sup>ème</sup>
	3rd	152.8	158.4	114.5	165.0	121.7	106.5	162.6	102.1	120.2	94.0	98.2	146.7		3 <sup>ème</sup>
	4th	148.8	158.3	114.1	164.6	121.7	106.5	162.6	102.1	120.2	94.0	97.8	145.2		4 <sup>ème</sup>
2020	1st	148.3	157.4	114.0	164.4	121.2	106.6	162.7	103.4	119.4	94.0	97.6	144.5	2020	1 <sup>er</sup>
	2nd	142.4	156.3	114.0	160.0	129.4	106.8	164.0	103.4	119.4	93.7	97.6	141.9		2 <sup>ème</sup>
	3rd	144.3	156.1	114.0	165.9	120.9	106.8	163.2	103.4	119.4	93.7	97.6	142.8		3 <sup>ème</sup>
	4th	144.4	156.1	114.0	165.9	121.3	106.8	163.5	103.4	119.4	93.7	97.6	143.0		4 <sup>ème</sup>
2021	1st	145.2	155.6	111.8	162.0	122.2	106.8	164.5	103.3	119.4	93.7	97.6	142.8	2021	1 <sup>er</sup>
	2nd	145.2	157.0	111.8	150.7	122.7	106.8	165.4	94.9	119.4	93.7	97.6	140.9		2 <sup>ème</sup>
	3rd	146.1	154.2	112.2	150.7	123.4	106.8	164.7	94.9	119.4	93.7	97.6	141.1		3 <sup>ème</sup>
	4th	147.1	154.4	110.9	153.0	122.8	106.8	161.1	95.7	119.4	93.7	97.6	141.7		4 <sup>ème</sup>