

STATISTICS UPDATE: CONSUMER PRICE INDEX

RELEASE DATE: 2nd of April, 2020.

DECEMBER QUARTER 2019 HIGHLIGHTS

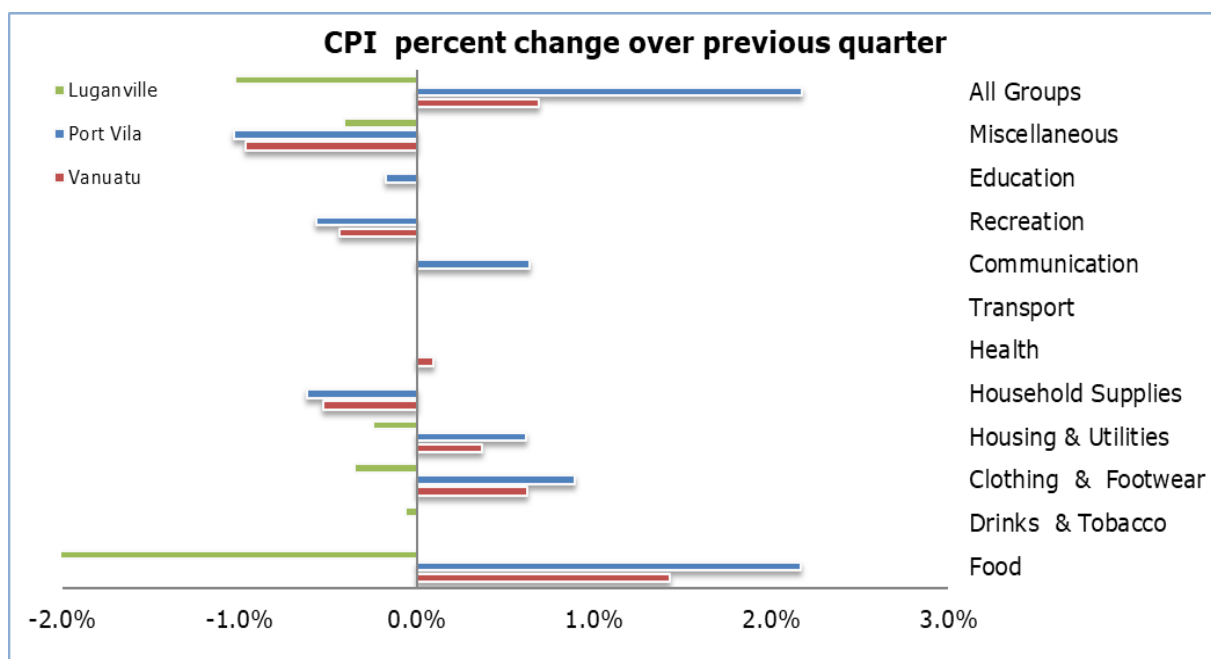


Figure 1: CPI per cent change over previous quarter

CPI QUARTERLY MOVEMENT

The Consumer Price Index (CPI) of December, 2019 indicated an increase of (+0.6%). Port Vila slightly increased by (+1.0%), however, Luganville decrease by (-1.0%) compared to the previous quarter. The expenditure groups that contributed to the increase in the CPI were: Food (+1.4%), Clothing and Footwear (+0.6%), Housing and Utilities (+0.4%), and Health (+0.1%). Transport, Communication and Education correspond remain constant. However, the group that contributed to the decrease in price movement was Miscellaneous (-1.0%), Housing Supplies (-0.5%), and Recreation (-0.4%) and Drinks and Tobacco (-0.1%). The main contributor in prices was due to the increase in price movements of Root crops, Fruits and Vegetables, Firewood, Business shoes and Medical supplies in Port Vila.

CPI ANNUAL MOVEMENT

When compared to the December quarter of 2018, the Vanuatu index increased by (+3.4%), Port Vila index increased by (+3.9%) while Luganville index slightly increased by (+0.6%). At national level, the expenditure groups that contributed to the increase over the same quarter of last year were: Food (+7.2%), Transport (+1.0%), Communication (+0.8%), Housing Utilities and Recreation contributed at (+0.7%) each, Household Supplies and Drinks and Tobacco at (+0.6%) respectively, and Education (+0.4%), Miscellaneous remain constant. The increase in these expenditure groups were driven by the increase in price movements of Root crops, Fruits and Vegetables, Automatic Fuel and Mobile phones, Electricity supply charges, Sports Membership fees, Furniture and Furnishes, Tobacco, School fees However, Clothing and Footwear decreased at (-0.5%).

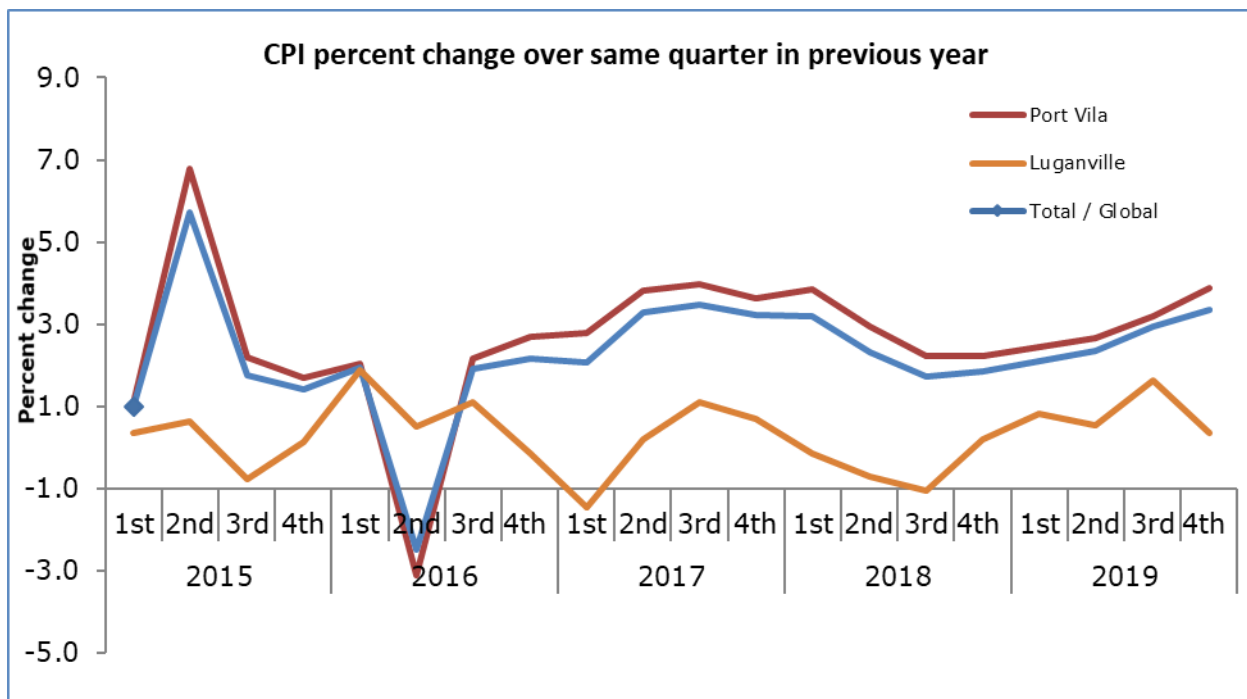


Figure 2: CPI per cent change over same quarter in previous year

UNDERLYING INFLATION

'Underlying inflation' is a measure derived from the CPI excluding items which typically have unstable or volatile prices; because of things like seasonal variation or policy decisions. In December quarter of 2019, underlying inflation increased by (+0.1%) over the previous quarter and increased by (+0.5%) over the same quarter of 2018.

CONCEPTS AND DEFINITIONS

The Consumer Price Index (CPI) is used to measure the changes in the prices of goods and services purchased by households in Port Vila and Luganville over a period of time. The separate indices for these two major commercial centres are then combined to create the Vanuatu CPI.

This change in prices is sometimes called inflation. Retail stores, supermarkets, liquor outlets, transport operators, service stations and other providers of goods and services help supply the Vanuatu National Statistics Office with the information to calculate the CPI. Prices are collected for exactly the same goods and services each quarter. This ensures that changes in the cost of goods and services over time are not due to changes in the quantity or quality of the goods and services purchased.

ATTACHMENT

Table 1 Consumer Price Index: All Items

Table 2 Consumer Price Index: Expenditure Groups

NEXT UPDATE (QUARTERLY)

March

RELEASE DATE

8th of May, 2020.

MORE INFORMATION

For statistical enquiries about this topic, please contact:

National Statistics Office: (678) 22110/22111/33040, Voip: 1124

Email: stats@vanuatu.gov.vu

PROVINCIAL STATISTICS OFFICES

Sanma Office

PO Box 273, Millennium Building
Luganville, SANTO
Tel/Fax: (678) 36542
Ext/voip: 6330

Tafea Office

MFEM Building,
Isangel, Tafea
Tel: (678) 88014
Ext/voip: 8361

Malampa Office

MFEM Building
Lakatoro, Malekula
Tel: (678) 48400


Mr. KAP Calo Andy

Government Statistician

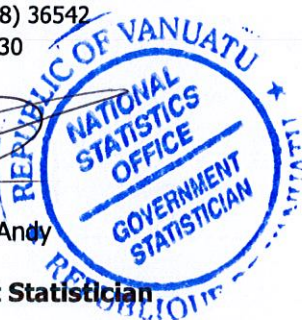


Table 1 Consumer Price Index
Base: 1st Quarter 2000 = 100
Tableau 1 Indice des prix à la consommation
Base: 1^{er} Trimestre 2000 = 100

Consumer Price Indices					Underlying Inflation Index	Rate of Change (%)			Rate of Change (%)				
Year	Quarter	Indice des prix à la consommation			Inflation sous-jacente	Variation par rapport			Variation			Année	Trimestre
		Total / Global	Port Vila	Luganville	Total / Global	Total / Global	Port Vila	Luganville	Total / Global	Port Vila	Luganville		
						Over Previous Year / à l'année précédente			4th Quarter over 4th Quarter of previous year / du 4ème trimestre au 4ème trimestre de l'année précédente				
2014		142.0	141.7	143.2	130.7	0.8	0.8	0.8	1.1	1.2	0.5	2014	
2015		145.5	145.9	143.3	131.9	2.5	2.9	0.1	1.4	1.7	0.1	2015	
2016		146.7	147.2	144.5	133.1	0.9	0.9	0.8	2.2	2.8	-0.1	2016	
2017		151.2	152.6	144.7	133.3	3.1	3.7	0.1	3.3	3.8	0.7	2017	
2018		154.8	157.0	144.1	135.2	2.3	2.9	-0.4	1.9	2.3	0.2	2018	
						Over Previous Quarter / au trimestre précédent			Over Same Quarter of previous year / au même trimestre de l'année précédente				
2014	1st	141.5	141.3	142.7	129.9	0.3	0.4	0.2	0.7	0.7	1.1	2014	1er
	2nd	141.7	141.4	143.3	130.6	0.1	0.1	0.4	0.6	0.6	0.7		2ème
	3rd	142.0	141.7	143.7	130.9	0.2	0.2	0.3	0.8	0.8	0.8		3ème
	4th	142.6	142.5	143.1	131.3	0.4	0.6	-0.4	1.1	1.2	0.5		4ème
2015	1st	142.9	142.8	143.2	130.9	0.2	0.2	0.1	1.0	1.1	0.4	2015	1er
	2nd	149.8	151.0	144.2	132.8	4.8	5.7	0.7	5.7	6.8	0.6		2ème
	3rd	144.5	144.8	142.6	131.4	-3.5	-4.1	-1.1	1.8	2.2	-0.8		3ème
	4th	144.6	144.9	143.3	132.3	0.1	0.1	0.5	1.4	1.7	0.1		4ème
2016	1st	145.7	145.7	145.9	133.3	0.8	0.6	1.8	2.0	2.0	1.9	2016	1er
	2nd	146.0	146.2	144.9	133.4	0.2	0.3	-0.7	-2.5	-3.1	0.5		2ème
	3rd	147.3	148.0	144.2	133.2	0.9	1.2	-0.5	1.9	2.2	1.1		3ème
	4th	147.8	148.9	143.1	132.5	0.3	0.6	-0.8	2.2	2.7	-0.1		4ème
2017	1st	148.8	149.9	143.8	132.3	0.7	0.7	0.5	2.1	2.8	-1.5	2017	1er
	2nd	150.8	152.0	145.2	133.4	1.3	1.4	1.0	3.3	3.8	0.2		2ème
	3rd	152.6	154.1	145.8	133.7	1.2	1.4	0.4	3.5	4.0	1.1		3ème
	4th	152.7	154.5	144.1	133.6	0.1	0.3	-1.2	3.2	3.6	0.7		4ème
2018	1st	153.7	155.9	143.6	134.8	0.7	0.9	-0.3	3.2	3.8	-0.1	2018	1er
	2nd	154.4	156.6	144.2	134.9	0.5	0.4	0.4	2.3	2.9	-0.7		2ème
	3rd	155.3	157.6	144.3	135.2	0.6	0.6	0.1	1.7	2.2	-1.0		3ème
	4th	155.6	158.0	144.4	135.9	0.2	0.3	0.1	1.9	2.2	0.2		4ème
2019	1st	157.0	159.8	144.8	136.3	0.9	1.1	0.3	2.1	2.4	0.8	2019	1er
	2nd	158.1	160.9	145.0	135.9	0.7	0.7	0.1	2.3	2.7	0.6		2ème
	3rd	160.0	162.8	146.7	136.5	1.2	1.2	1.2	2.9	3.2	1.6		3ème
	4th	161.0	164.4	145.2	136.6	0.6	1.0	-1.0	3.4	3.9	0.6		4ème

Table 2 Consumer Price Indices by Expenditure Group
Tableau 2 Indice des prix à la consommation par poste de dépense

Base: 1st Quarter 2000 = 100
Base: 1^{er} Trimestre 2000 = 100

Year	Quarter	Food	Alcoholic drinks and Tobacco	Clothing & Footwear	Housing & Utilities	Household Supplies	Health	Transport	Communication	Recreation	Education	Miscellaneous	All Groups	Année	Trimestre
		Produits alimentaires	Boisson alcoolisée et tabac	Habillement	Loyer, eau, et énergie etc.	Mobilier et équipement ménager etc.	Santé			Loisir		Autres	Indice Global		
Vanuatu															
2015	1st	149.7	180.3	110.5	135.6	106.6	102.6	150.5	98.6	131.1	115.1	115.2	142.9	2015	1 ^{er}
	2nd	168.5	180.1	110.4	135.0	106.2	102.6	150.1	98.6	131.5	115.1	115.2	149.8		2 ^{ème}
	3rd	152.2	180.8	115.3	135.8	107.6	101.9	153.8	98.6	133.7	115.1	113.6	144.5		3 ^{ème}
	4th	151.6	181.3	115.9	137.1	107.6	102.0	157.2	98.6	133.7	115.1	112.7	144.7		4 ^{ème}
2016	1st	155.1	180.9	114.3	133.2	107.6	101.8	158.3	99.0	133.7	120.5	112.6	145.7	2016	1 st
	2nd	157.3	180.8	111.8	131.7	107.6	101.8	157.6	98.1	133.7	120.5	112.5	146.0		2 ^{ème}
	3rd	160.9	180.7	111.1	132.0	107.6	101.8	158.6	98.0	133.7	120.5	112.6	147.3		3 ^{ème}
	4th	162.7	180.7	110.9	132.2	108.8	101.8	158.8	94.4	132.2	120.5	111.1	147.8		4 ^{ème}
2017	1st	164.9	181	110.4	130.9	108.0	101.9	162.5	94.9	132.7	124.3	110.0	148.8	2017	1 ^{er}
	2nd	168.9	181	110.7	132.0	108.3	102.0	166.6	94.9	131.3	124.3	110.3	150.8		2 ^{ème}
	3rd	172.4	181.1	110.5	134.0	108.3	102.0	167.5	94.9	130.7	124.3	110.4	152.6		3 ^{ème}
	4th	173.1	181	111.4	132.5	108.3	102.0	168.8	94.9	129.5	124.3	110.7	152.7		4 ^{ème}
2018	1st	174.5	186.1	112.0	134.1	112.7	103.2	169.7	95.2	135.5	110.5	112.2	153.7	2018	1 ^{er}
	2nd	176.1	186.3	112.1	134.6	113.0	103.9	169.8	94.7	135.8	110.5	112.0	154.4		2 ^{ème}
	3rd	178.1	186.2	112.7	134.4	113.3	103.9	170.4	94.9	136.0	110.5	111.7	155.3		3 ^{ème}
	4th	178.5	186.1	113.6	134.7	113.1	103.9	171.2	94.9	136.1	110.5	112.9	155.6		4 ^{ème}
2019	1st	181.1	187.3	112.8	136.2	113.4	103.2	173.2	95.2	136.4	110.9	114.7	157.0	2019	1 ^{er}
	2nd	184.2	187.3	112.7	135.0	113.5	103.2	172.8	95.2	137.6	110.9	113.9	158.1		2 ^{ème}
	3rd	188.8	187.3	112.3	135.1	114.4	103.2	172.9	95.7	137.6	110.9	114.0	160.0		3 ^{ème}
	4th	191.4	187.2	113.0	135.6	113.8	103.3	172.9	95.7	137.0	110.9	112.9	161.0		4 ^{ème}
Port Vila															
2015	1st	150.6	185.3	112.0	131.3	105.7	102.6	153.1	98.1	132.8	115.3	115.2	142.8	2015	1 ^{er}
	2nd	173.6	185.3	112.0	130.6	105.2	102.6	152.5	98.1	133.1	115.3	114.8	151.0		2 ^{ème}
	3rd	153.8	186.0	118.0	131.8	107.7	101.8	157.0	98.1	135.6	115.3	114.3	144.8		3 ^{ème}
	4th	152.9	186.4	118.4	132.9	108.0	101.9	160.7	98.1	135.7	115.3	113.8	145.0		4 ^{ème}
2016	1st	156.3	186.4	115.9	128.6	108.5	101.9	162.1	98.1	133.7	120.8	113.8	145.7	2016	1 ^{er}
	2nd	159.9	185.9	112.6	126.7	107.9	101.8	161.0	97.1	133.7	120.8	113.7	146.2		2 ^{ème}
	3rd	164.8	185.9	111.8	126.9	107.3	101.8	161.4	97.1	133.4	120.8	114.0	148.0		3 ^{ème}
	4th	167.7	185.9	111.6	127.1	107.4	101.8	162.0	93.2	133.4	120.8	112.7	148.9		4 ^{ème}
2017	1st	170.1	185.8	110.8	125.9	106.3	101.9	165.8	93.8	134.0	125.6	111.5	149.9	2017	1 ^{er}
	2nd	174.5	185.8	111.0	127.1	106.6	102.0	170.1	93.8	132.6	125.5	112.2	152.0		2 ^{ème}
	3rd	178.7	186.0	111.0	129.4	106.5	102.0	169.8	93.8	132.6	125.5	112.3	154.1		3 ^{ème}
	4th	180.6	186.0	111.7	127.6	106.6	102.0	171.3	93.8	131.2	125.5	112.7	154.5		4 ^{ème}
2018	1st	182.0	191.8	112.3	129.0	111.4	102.9	171.9	94.0	138.5	115.4	114.7	155.9	2018	1 ^{er}
	2nd	183.6	192.1	112.5	129.4	111.8	103.7	172.1	93.5	138.9	115.4	114.4	156.5		2 ^{ème}
	3rd	186.2	192.0	113.1	129.2	112.0	103.7	172.7	93.7	139.1	115.4	114.1	157.6		3 ^{ème}
	4th	186.7	192.0	113.6	129.9	111.7	103.7	173.5	93.7	139.1	115.4	115.1	158.0		4 ^{ème}
2019	1st	189.7	193.7	112.3	130.4	112.0	102.8	175.3	94.1	139.3	115.8	117.2	159.8	2019	1 ^{er}
	2nd	193.5	193.7	112.7	130.2	112.1	102.8	174.8	94.1	140.7	115.8	116.5	160.9		2 ^{ème}
	3rd	198.4	193.7	111.8	130.0	113.1	102.8	174.8	94.1	140.7	115.8	116.5	162.8		3 ^{ème}
	4th	202.7	193.7	112.8	130.8	112.4	102.8	174.8	94.7	139.9	115.6	115.6	164.4		4 ^{ème}
Luganville															
2015	1st	147.7	156.5	105.1	160.7	112.0	103.2	136.3	101.3	121.5	114.4	115.6	143.2	2015	1 ^{er}
	2nd	150.0	155.7	104.4	161.0	111.6	102.6	137.5	101.5	122.5	114.4	116.7	144.2		2 ^{ème}
	3rd	147.4	156.3	105.1	159.0	114.2	102.7	136.6	101.5	128.9	114.4	108.9	142.6		3 ^{ème}
	4th	148.1	157.3	106.3	161.1	114.6	103.2	138.8	101.5	129.0	114.4	105.9	143.4		4 ^{ème}
2016	1st	151.8	155.9	108.2	160.5	117.7	101.6	137.8	103.9	126.7	119.2	105.0	145.9	2016	1 ^{er}
	2nd	148.3	156.9	109.0	162.5	117.7	101.6	139.4	103.9	126.7	119.2	105.0	144.9		2 ^{ème}
	3rd	146.9	156.4	108.9	163.4	116.8	101.6	139.9	103.2	127.0	119.2	103.4	144.2		3 ^{ème}
	4th	144.6	156.4	108.8	163.4	116.5	101.6	141.8	101.2	125.4	119.2	101.1	143.1		4 ^{ème}
2017	1st	145.8	157.8	109.2	161.8	117.6	101.7	145.4	101.2	125.0	119.7	100.1	143.8	2017	1 ^{er}
	2nd	148.5	157.8	110.0	162.0	118.0	102.1	147.8	101.2	124.2	119.7	98.6	145.2		2 ^{ème}
	3rd	149.2	157.9	109.4	162.0	118.5	102.6	155.6	102.2	120.0	119.7	98.2	145.8		3 ^{ème}
	4th	145.3	157.4	110.7	162.8	118.2	102.3	155.6	101.2	120.2	119.7	98.2	144.1		4 ^{ème}
2018	1st	146.8	160.1	111.1	166.1	119.8	105.3	158.1	102.1	118.6	93.0	96.6	143.6	2018	1 ^{er}
	2nd	146.1	160.0	111.2	166.2	119.5	105.3	158.2	102.1	118.4	93.0	96.7	144.2		2 ^{ème}
	3rd	147.9	159.6	111.4	166.7	120.7	105.7	158.5	102.1	118.4	93.0	96.2	144.3		3 ^{ème}
	4th	148.1	159.3	114.2	164.2	120.9	105.7	159.5	102.5	119.4	93.0	99.6	144.4		4 ^{ème}
2019	1st	148.7	158.8	114.9	164.4	121.2	106.5	162.1	102.1	120.2	94.0	98.8	144.8	2019	1 ^{er}
	2nd	149.2	158.6	114.2	164.5	121.8	106.5	162.6	102.1	120.2	94.0	97.4	145.1		2 ^{ème}
	3rd	152.8	158.4	114.5	165.0	121.7	106.5	162.6	102.1	120.2	94.0	98.2	146.7		3 ^{ème}
	4th	148.8	158.3	114.1	164.6	121.7	106.5	162.6	102.1	120.2	94.0	97.8	145.2		4 ^{ème}