

STATISTICS UPDATE: CONSUMER PRICE INDEX

RELEASE DATE: 17th September 2021

JUNE QUARTER 2021 HIGHLIGHTS

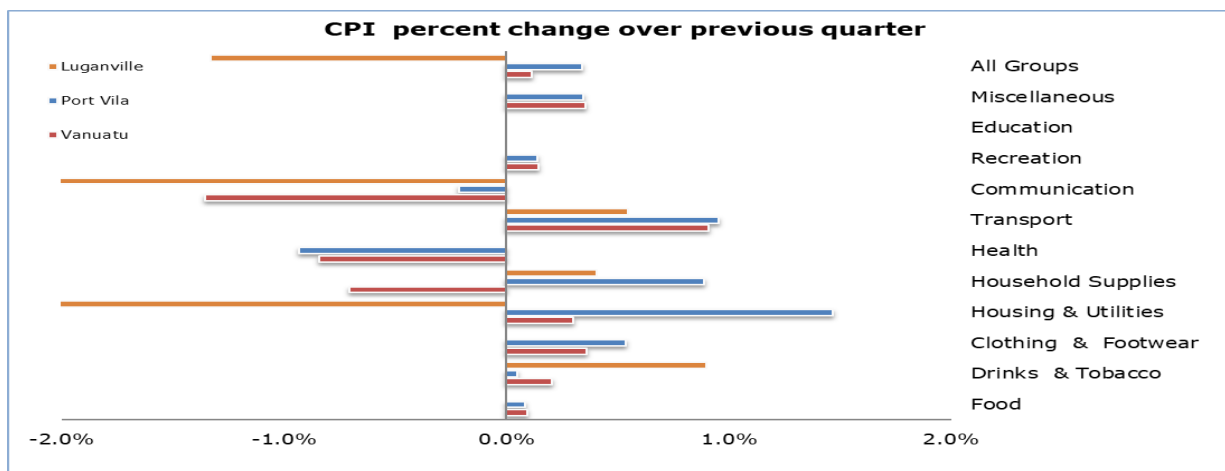


Figure 1: CPI per cent change over previous quarter

CPI QUARTERLY MOVEMENT

The Consumer Price Index (CPI) of June, 2021 indicated an increase of (+0.1%). Port Vila increased by (+0.3%) however, Luganville decreased by (-1.3%) compared to the previous quarter. The expenditure groups that contributed to the increase in the CPI were: Transport (+0.9%), Clothing and Footwear, and Miscellaneous contributed at (+0.4%) respectively, Housing Utilities (+0.3%). Food and Recreation also contributed at (+0.1%) each, while Drinks and Tobacco and Education remain constant. However, the group that decrease in price were Communication at (-1.4%), Health (-0.8%) and Housing Supplies (-0.7%). The increase in price movement was driven by price changes in automotive oil and fuel in both region, women and children clothing, personal accessories electricity connection fees and supply charges in Port Vila. Price changes in Luganville indicate price decrease for mobile prepaid cards and electricity supply charges.

CPI ANNUAL MOVEMENT

When compared to the June quarter of 2020, the Vanuatu index increased by (+2.4 %), Port Vila index increased by (+2.9%) while Luganville index slightly decreased by (-0.6%). At national level the expenditure groups that contributed to the increase over the same quarter of last year were: Food (+4.7%), Drinks and Tobacco (+3.9%), Transportation contributed (+3.2%), Recreation (+1.8%), Miscellaneous also contributed (+0.4%), and Education (+0.3%) The increase in these expenditure groups were driven by the increase in price movements of Root crops, Fruits and Vegetables, prescription medical drugs and Tobacco, and automotive oil and fuel.

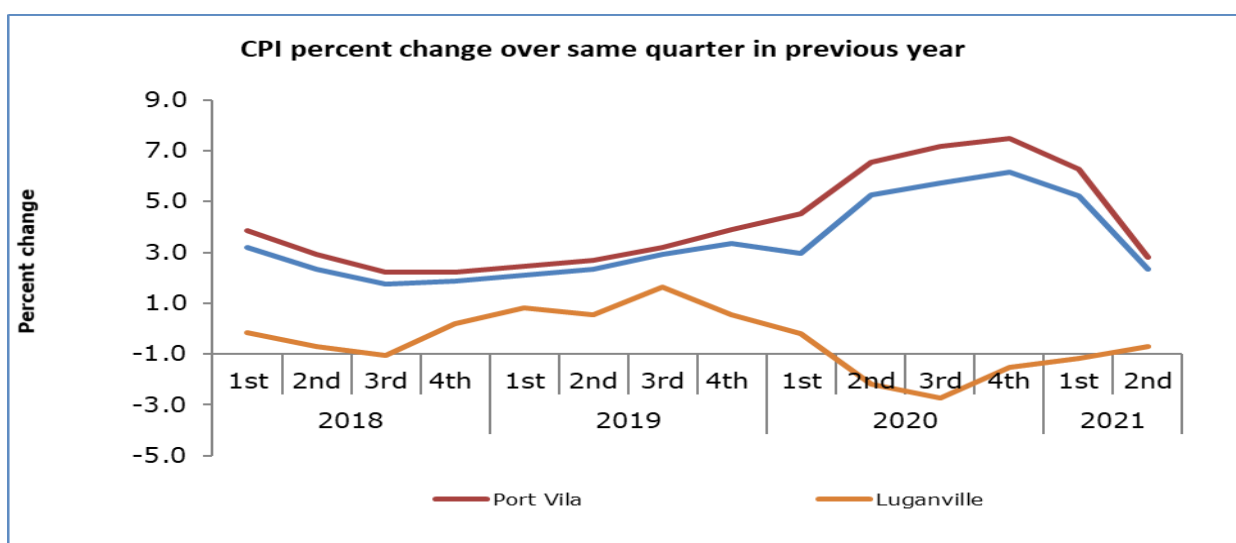


Figure 2: CPI per cent change over same quarter in previous year

UNDERLYING INFLATION

'Underlying inflation' is a measure derived from the CPI excluding items which typically have unstable or volatile prices; because of things like seasonal variation or policy decisions. In June quarter of 2021 underlying inflation increased by (-0.7%) over the previous quarter and decreased by (-1.1%) over the same quarter of 2020.

CONCEPTS AND DEFINITIONS

The Consumer Price Index (CPI) is used to measure the changes in the prices of goods and services purchased by households in Port Vila and Luganville over a period of time. The separate indices for these two major commercial centers are then combined to create the Vanuatu CPI.

This change in prices is sometimes called inflation. Retail stores, supermarkets, liquor outlets, transport operators, service stations and other providers of goods and services help supply the Vanuatu National Statistics Office with the information to calculate the CPI. Prices are collected for exactly the same goods and services each quarter. This ensures that changes in the cost of goods and

services over time are not due to changes in the quantity or quality of the goods and services purchased.

ATTACHMENT

Table 1 Consumer Price Index: All Items

Table 2 Consumer Price Index: Expenditure Groups

NEXT UPDATE (QUARTERLY)

RELEASE DATE

August 2021

12th November, 2021

MORE INFORMATION

For statistical enquiries about this topic, please contact:

National Statistics Office: (678) 22110/22111/33040, Voip: 1124

Email: stats@vanuatu.gov.vu

PROVINCIAL STATISTICS OFFICES

Sanma Office

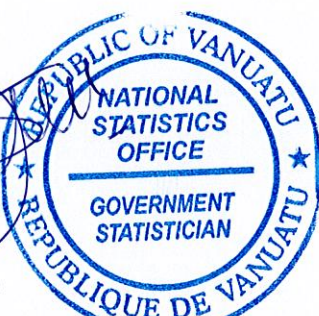

PO Box 273, MFEM Building
Luganville, SANTO
Tel/Fax: (678) 36542
Ext/voip: 6330

Tafea Office

MFEM Building,
Isangel, Tafea
Tel: (678) 88014
Ext/voip: 8361

Malampa Office

MFEM Building
Lakatoro, Malekula
Tel: (678) 48400



Mr. Benuel Lenge
Government Statistician

Table 1 Consumer Price Index											Base: 1st Quarter 2000 = 100			
Tableau 1 Indice des prix à la consommation											Base: 1^{er} Trimestre 2000 = 100			
Consumer Price Indices				Underlying Inflation Index		Rate of Change (%)			Rate of Change (%)					
Year	Quarter	Indice des prix à la consommation			Inflation		Variation par rapport			Variation			Année	Trimestre
		Total / Global	Port Vila	Luganville	Total / Global		Total / Global	Port Vila	Luganville	Total / Global	Port Vila	Luganville		
							Over Previous Year / à l'année précédente			4th Quarter over 4th Quarter of previous year / du 4ème trimestre au 4ème trimestre de l'année précédente				
2017		151.2	152.6	144.7	133.3		3.1	3.7	0.1	3.3	3.8	0.7	2017	
2018		154.8	157.0	144.1	135.2		2.3	2.9	-0.4	1.9	2.3	0.2	2018	
2019		159.0	162.0	145.4	136.3		2.8	3.2	0.9	3.5	4.1	0.6	2019	
2020		167.5	172.7	143.1	135.8		5.3	6.6	-1.6	6.6	8.1	-1.5	2020	
							Over Previous Quarter / au trimestre précédent			Over Same Quarter of previous year / au même trimestre de l'année précédente				
2018	1st	153.7	155.9	143.6	134.8		0.7	0.9	-0.3	3.2	3.8	-0.1	2018	1er
	2nd	154.4	156.6	144.2	134.9		0.5	0.4	0.4	2.3	2.9	-0.7		2ème
	3rd	155.3	157.6	144.3	135.2		0.6	0.6	0.1	1.7	2.2	-1.0		3ème
	4th	155.6	158.0	144.4	135.9		0.2	0.3	0.1	1.9	2.2	0.2		4ème
2019	1st	157.0	159.8	144.8	136.3		0.9	1.1	0.3	2.1	2.4	0.8	2019	1er
	2nd	158.1	160.9	145.0	135.9		0.7	0.7	0.1	2.3	2.7	0.6		2ème
	3rd	160.0	162.8	146.7	136.5		1.2	1.2	1.2	2.9	3.2	1.6		3ème
	4th	161.0	164.4	145.2	136.6		0.6	1.0	-1.0	3.4	3.9	0.6		4ème
2020	1st	161.8	165.5	144.5	137.1		0.5	0.7	-0.5	3.0	4.5	-0.2	2020	1er
	2nd	166.9	172.2	141.9	135.3		3.1	3.9	-1.8	5.3	6.6	-2.2		2ème
	3rd	169.7	175.4	142.8	135.2		1.6	1.8	0.6	5.7	7.2	-2.7		3ème
	4th	171.6	177.7	143.0	135.4		1.1	1.3	0.1	6.2	7.5	-1.5		4ème
2021	1st	170.7	176.6	142.8	134.8		-0.5	-0.6	-0.1	5.2	6.3	-1.2	2021	1er
	2nd	170.9	177.2	140.9	133.8		0.1	0.3	-1.3	2.3	2.8	-0.7		2ème

Table 2 Consumer Price Indices by Expenditure Group Tableau 2 Indice des prix à la consommation par poste de dépense		Base: 1st Quarter 2000 = 100 Base: 1 ^{er} Trimestre 2000 = 100													
Year	Quarter	Food Produits alimentaires	Alcoholic drinks and Tobacco Boisson alcoolisée et tabac	Clothing & Footwear Habillement	Housing & Utilities Loyer, eau, et énergie etc.	Household Supplies Mobilier et équipement ménager etc.	Health Santé	Transport	Communication	Recreation Loisir	Education	Miscellaneous Autres	All Groups Indice Global	Année	Trimestre
Vanuatu															
2018	1st	174.5	186.1	112.0	134.1	112.7	103.2	169.7	95.2	135.5	110.5	112.2	153.7	2018	1 ^{er}
	2nd	176.1	186.3	112.1	134.6	113.0	103.9	169.8	94.7	135.8	110.5	112.0	154.4		2 ^{ème}
	3rd	178.1	186.2	112.7	134.4	113.3	103.9	170.4	94.9	136.0	110.5	111.7	155.3		3 ^{ème}
	4th	178.5	186.1	113.6	134.7	113.1	103.9	171.2	94.9	136.1	110.5	112.9	155.6		4 ^{ème}
2019	1st	181.1	187.3	112.8	136.2	113.4	103.2	173.2	95.2	136.4	110.9	114.7	157.0	2019	1 ^{er}
	2nd	184.2	187.3	112.7	135.0	113.5	103.2	172.8	95.2	137.6	110.9	113.9	158.1		2 ^{ème}
	3rd	188.8	187.3	112.3	135.1	114.4	103.2	172.9	95.7	137.6	110.9	114.0	160.0		3 ^{ème}
	4th	191.4	187.2	113.0	135.6	113.8	103.3	172.9	95.7	137.0	110.9	112.9	161.0		4 ^{ème}
2020	1st	193.3	188.3	113.4	135.6	114.1	103.6	172.9	95.9	136.2	111.3	111.8	161.8	2020	1 ^{er}
	2nd	206.5	188.0	116.7	135.2	115.3	107.9	171.9	95.9	135.5	111.3	112.7	166.9		2 ^{ème}
	3rd	213.1	192.0	115.8	135.9	114.1	109.1	171.4	95.9	136.0	111.3	112.7	169.7		3 ^{ème}
	4th	217.8	195.5	112.0	135.0	113.7	107.2	174.3	96.8	137.6	111.3	113.1	171.6		4 ^{ème}
2021	1st	216.0	195.4	111.2	133.9	113.8	107.2	175.8	96.0	137.7	111.6	112.7	170.7	2021	1 ^{er}
	2nd	216.2	195.8	111.6	134.3	113.0	106.3	177.4	94.7	137.9	111.6	113.1	170.9		2 ^{ème}
Port Vila															
2018	1st	182.0	191.8	112.3	129.0	111.4	102.9	171.9	94.0	138.5	115.4	114.7	155.9	2018	1 ^{er}
	2nd	183.6	192.1	112.5	129.4	111.8	103.7	172.1	93.5	138.9	115.4	114.4	156.5		2 ^{ème}
	3rd	186.2	192.0	113.1	129.2	112.0	103.7	172.7	93.7	139.1	115.4	114.1	157.6		3 ^{ème}
	4th	186.7	192.0	113.6	129.9	111.7	103.7	173.5	93.7	139.1	115.4	115.1	158.0		4 ^{ème}
2019	1st	189.7	193.7	112.3	130.4	112.0	102.8	175.3	94.1	139.3	115.8	117.2	159.8	2019	1 ^{er}
	2nd	193.5	193.7	112.7	130.2	112.1	102.8	174.8	94.1	140.7	115.8	116.5	160.9		2 ^{ème}
	3rd	198.4	193.7	111.8	130.0	113.1	102.8	174.8	94.1	140.7	115.8	116.5	162.8		3 ^{ème}
	4th	202.7	193.7	112.8	130.8	112.4	102.8	174.8	94.7	139.9	115.6	115.6	164.4		4 ^{ème}
2020	1st	205.2	195.4	113.4	130.9	112.8	103.2	174.9	94.7	139.2	116.1	114.1	165.5	2020	1 ^{er}
	2nd	223.2	195.4	117.5	131.0	112.9	108.0	173.4	94.7	138.3	116.1	115.1	172.2		2 ^{ème}
	3rd	231.1	200.5	116.4	131.0	112.9	109.4	173.0	94.7	138.9	116.1	115.1	175.4		3 ^{ème}
	4th	237.0	205.1	111.7	130.0	112.4	107.3	176.4	95.7	140.8	116.1	115.5	177.7		4 ^{ème}
2021	1st	234.5	205.1	111.1	129.3	112.3	107.2	178	94.8	140.9	116.5	115.1	176.6	2021	1 ^{er}
	2nd	234.7	205.2	111.7	131.2	113.3	106.2	179.7	94.6	141.1	116.5	115.5	177.2		2 ^{ème}
Luganville															
2018	1st	146.8	160.1	111.1	166.1	119.8	105.3	158.1	102.1	118.6	93.0	96.6	143.6	2018	1 ^{er}
	2nd	146.1	160.0	111.2	166.2	119.5	105.3	158.2	102.1	118.4	93.0	96.7	144.2		2 ^{ème}
	3rd	147.9	159.6	111.4	166.7	120.7	105.7	158.5	102.1	118.4	93.0	96.2	144.3		3 ^{ème}
	4th	148.1	159.3	114.2	164.2	120.9	105.7	159.5	102.5	119.4	93.0	99.6	144.4		4 ^{ème}
2019	1st	148.7	158.8	114.9	164.4	121.2	106.5	162.1	102.1	120.2	94.0	98.8	144.8	2019	1 ^{er}
	2nd	149.2	158.6	114.2	164.5	121.8	106.5	162.6	102.1	120.2	94.0	97.4	145.1		2 ^{ème}
	3rd	152.8	158.4	114.5	165.0	121.7	106.5	162.6	102.1	120.2	94.0	98.2	146.7		3 ^{ème}
	4th	148.8	158.3	114.1	164.6	121.7	106.5	162.6	102.1	120.2	94.0	97.8	145.2		4 ^{ème}
2020	1st	148.3	157.4	114.0	164.4	121.2	106.6	162.7	103.4	119.4	94.0	97.6	144.5	2020	1 ^{er}
	2nd	142.4	156.3	114.0	160.0	129.4	106.8	164.0	103.4	119.4	93.7	97.6	141.9		2 ^{ème}
	3rd	144.3	156.1	114.0	165.9	120.9	106.8	163.2	103.4	119.4	93.7	97.6	142.8		3 ^{ème}
	4th	144.4	156.1	114.0	165.9	121.3	106.8	163.5	103.4	119.4	93.7	97.6	143.0		4 ^{ème}
2021	1st	145.2	155.6	111.8	162.0	122.2	106.8	164.5	103.3	119.4	93.7	97.6	142.8	2021	1 ^{er}
	2nd	145.2	157.0	111.8	150.7	122.7	106.8	165.4	94.9	119.4	93.7	97.6	140.9		2 ^{ème}