

STATISTICS UPDATE: CONSUMER PRICE INDEX

RELEASE DATE: 1st of August 2019.

JUNE QUARTER 2019 HIGHLIGHTS

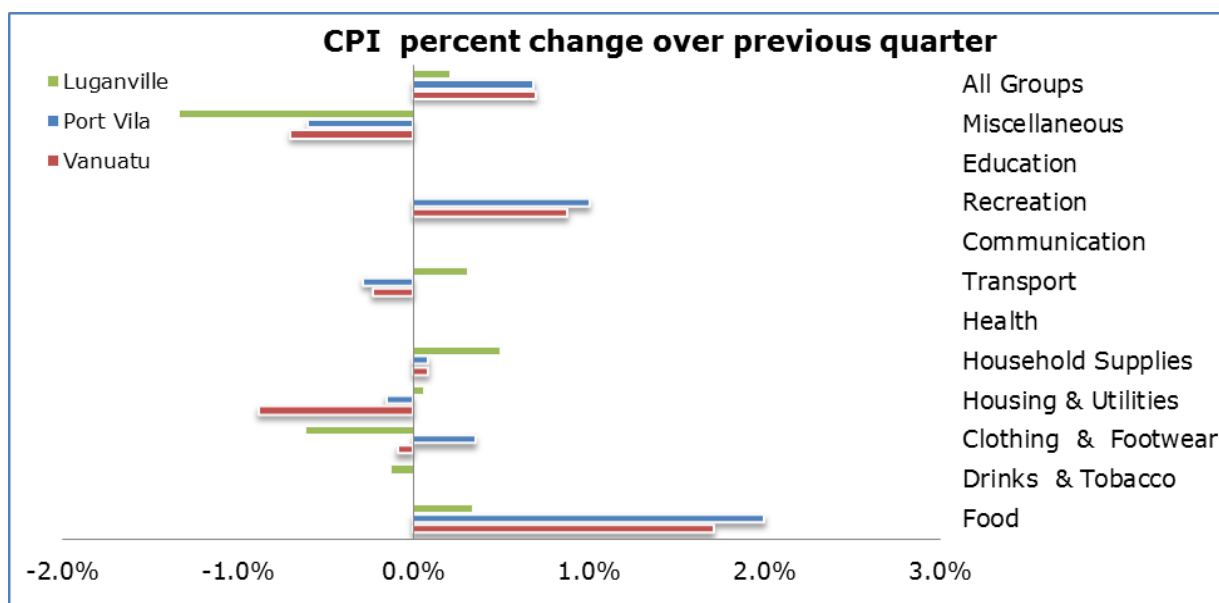


Figure 1: CPI per cent change over previous quarter

CPI QUARTERLY MOVEMENT

The Consumer Price Index (CPI) of June 2019 indicated an increase of (+0.7%). Port Vila slightly increased by (+0.7%) and Luganville by (+0.1%) compared to the previous quarter. The expenditure groups that contributed to the increase in the CPI were: Food (+1.7%), Recreation (+0.9%) and Housing Supplies (+0.1%). Drinks and Tobacco, Health, Communication, and Education, respectively remain constant. However, the groups that contributed to the decrease in price movement were Housing Utilities (-0.9%), Miscellaneous (-0.7%), Transport (-0.2%) and Clothing and Footwear (-0.1%). The main contributor in prices was due to the increase in price movements of Fruits and Vegetables, Furniture, towels and linens in both region, and visual entertainment equipment in Port Vila.

CPI ANNUAL MOVEMENT

When compared to the June quarter of 2018, the Vanuatu index increased by (+2.3%), Port Vila index increased by (+2.7%) while Luganville index slightly increased by (+0.6%). At national level, the expenditure groups that contributed to the increase over the same quarter of last year were: Food (+4.6%), Transport (+1.8%), Miscellaneous (+1.7%), Recreation (+1.3%), Drinks and Tobacco, Clothing and Footwear and Communication stood at (+0.5%) respectively, Education and Housing Supplies at (+0.4%) each and Housing Utilities (+0.3%). The increase in these expenditure groups were driven by the increase in price movements of Root crops, Fruits and Vegetables, Automatic Fuel and oil, Toiletries and other personal care products, Sports Membership fees, Packet cigarettes, Island dress, Mobile phones, Furniture and Furnishes, School fees and Electricity supply charges.

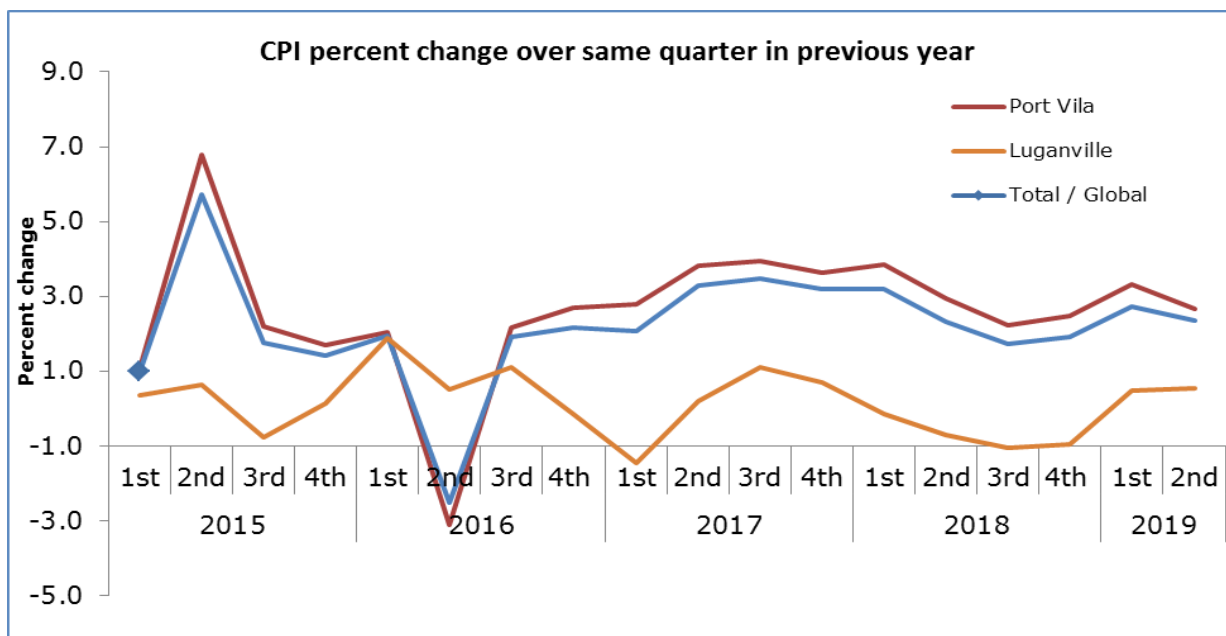


Figure 2: CPI per cent change over same quarter in previous year

UNDERLYING INFLATION

'Underlying inflation' is a measure derived from the CPI excluding items which typically have unstable or volatile prices; because of things like seasonal variation or policy decisions. In June quarter of 2019, underlying inflation decreased by (-0.3%) over the previous quarter and increased by (+0.7%) over the same quarter of 2018.

CONCEPTS AND DEFINITIONS

The Consumer Price Index (CPI) is used to measure the changes in the prices of goods and services purchased by households in Port Vila and Luganville over a period of time. The separate indices for these two major commercial centres are then combined to create the Vanuatu CPI.

This change in prices is sometimes called inflation. Retail stores, supermarkets, liquor outlets, transport operators, service stations and other providers of goods and services help supply the Vanuatu National Statistics Office with the information to calculate the CPI. Prices are collected for exactly the same goods and services each quarter. This ensures that changes in the cost of goods and services over time are not due to changes in the quantity or quality of the goods and services purchased.

ATTACHMENT

Table 1 Consumer Price Index: All Items

Table 2 Consumer Price Index: Expenditure Groups

NEXT UPDATE (QUARTERLY)

September

RELEASE DATE

8th of November, 2019

MORE INFORMATION

For statistical enquiries about this topic, please contact:

National Statistics Office: (678) 22110/22111/33040, Voip: 1124

Email: stats@vanuatu.gov.vu

PROVINCIAL STATISTICS OFFICES

Sanma Office

PO Box 273, Millennium Building
Luganville, SANTO
Tel/Fax: (678) 36542
Ext/voip: 6330

Tafea Office

MFEM Building,
Isangel, Tafea
Tel: (678) 88014
Ext/voip: 8361

Malampa Office

MFEM Building
Lakatoro, Malekula
Tel: (678) 48400

Mr. KAP Calo Andy

Government Statistician

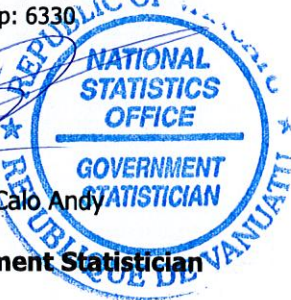


Table 1 Consumer Price Index

Base: 1st Quarter 2000 = 100

Tableau 1 Indice des prix à la consommation

Base: 1^{er} Trimestre 2000 = 100

Consumer Price Indices					Underlying Inflation Index	Rate of Change (%)			Rate of Change (%)				
Year	Quarter	Indice des prix à la consommation			Inflation	Variation par rapport			Variation			Année	Trimestre
		Total / Global	Port Vila	Luganville	sous-jacente Total / Global	Total / Global	Port Vila	Luganville	Total / Global	Port Vila	Luganville		
					Over Previous Year / à l'année précédente			4th Quarter over 4th Quarter of previous year / du 4ème trimestre au 4ème trimestre de l'année précédente					
2014		142.0	141.7	143.2	130.7	0.8	0.8	0.8	1.1	1.2	0.5	2014	
2015		145.5	145.9	143.3	131.9	2.5	2.9	0.1	1.4	1.7	0.1	2015	
2016		146.7	147.2	144.5	133.1	0.9	0.9	0.8	2.2	2.8	-0.1	2016	
2017		151.2	152.6	144.7	133.3	3.1	3.7	0.1	3.3	3.8	0.7	2017	
2018		154.8	157.0	144.1	135.2	2.3	2.9	-0.4	1.9	2.3	0.2	2018	
					Over Previous Quarter / au trimestre précédent			Over Same Quarter of previous year / au même trimestre de l'année précédente					
2014	1st	141.5	141.3	142.7	129.9	0.3	0.4	0.2	0.7	0.7	1.1	2014	1er
	2nd	141.7	141.4	143.3	130.6	0.1	0.1	0.4	0.6	0.6	0.7		2ème
	3rd	142.0	141.7	143.7	130.9	0.2	0.2	0.3	0.8	0.8	0.8		3ème
	4th	142.6	142.5	143.1	131.3	0.4	0.6	-0.4	1.1	1.2	0.5		4ème
2015	1st	142.9	142.8	143.2	130.9	0.2	0.2	0.1	1.0	1.1	0.4	2015	1er
	2nd	149.8	151.0	144.2	132.8	4.8	5.7	0.7	5.7	6.8	0.6		2ème
	3rd	144.5	144.8	142.6	131.4	-3.5	-4.1	-1.1	1.8	2.2	-0.8		3ème
	4th	144.6	144.9	143.3	132.3	0.1	0.1	0.5	1.4	1.7	0.1		4ème
2016	1st	145.7	145.7	145.9	133.3	0.8	0.6	1.8	2.0	2.0	1.9	2016	1er
	2nd	146.0	146.2	144.9	133.4	0.2	0.3	-0.7	-2.5	-3.1	0.5		2ème
	3rd	147.3	148.0	144.2	133.2	0.9	1.2	-0.5	1.9	2.2	1.1		3ème
	4th	147.8	148.9	143.1	132.5	0.3	0.6	-0.8	2.2	2.7	-0.1		4ème
2017	1st	148.8	149.9	143.8	132.3	0.7	0.7	0.5	2.1	2.8	-1.5	2017	1er
	2nd	150.8	152.0	145.2	133.4	1.3	1.4	1.0	3.3	3.8	0.2		2ème
	3rd	152.6	154.1	145.8	133.7	1.2	1.4	0.4	3.5	4.0	1.1		3ème
	4th	152.7	154.5	144.1	133.6	0.1	0.3	-1.2	3.2	3.6	0.7		4ème
2018	1st	153.7	155.9	143.6	134.8	0.7	0.9	-0.3	3.2	3.8	-0.1	2018	1er
	2nd	154.4	156.6	144.2	134.9	0.5	0.4	0.4	2.3	2.9	-0.7		2ème
	3rd	155.3	157.6	144.3	135.2	0.6	0.6	0.1	1.7	2.2	-1.0		3ème
	4th	155.6	158.0	144.4	135.9	0.2	0.3	0.1	1.9	2.5	-1.0		4ème
2019	1st	157.0	159.8	144.8	136.3	1.1	1.4	0.3	2.7	3.3	0.5	2019	1er
	2nd	158.1	160.9	145.0	135.9	0.7	0.7	0.1	2.3	2.7	0.6		2ème

Table 2 Consumer Price Indices by Expenditure Group													Base: 1st Quarter 2000 = 100		
Tableau 2 Indice des prix à la consommation par poste de dépense													Base: 1 ^{er} Trimestre 2000 = 100		
Year	Quarter	Food Produits alimentaires	Alcoholic drinks and Tobacco Boisson alcoolisée et tabac	Clothing & Footwear Habillement	Housing & Utilities Loyer, eau, et énergie etc.	Household Supplies Mobilier et équipement ménager etc.	Health Santé	Transport	Communication	Recreation Loisir	Education	Miscellaneous Autres	All Groups Indice Global	Année	Trimestre
Vanuatu															
2014	1st	149.5	179.5	107.5	133.6	107.1	101.4	143.0	98.3	132.1	111.0	114.7	141.5	2014	1er
	2nd	150.1	180.0	109.3	132.6	107.2	101.7	142.8	98.6	134.0	111.1	115.3	141.7		2ème
	3rd	150.2	180.4	109.9	133.1	107.3	102.6	143.7	98.7	133.6	111.2	115.3	142.0		3ème
	4th	150.5	180.3	110.3	134.4	106.8	102.5	148.1	98.6	131.0	111.2	115.2	142.6		4ème
2015	1st	149.7	180.3	110.5	135.6	106.6	102.6	150.5	98.6	131.1	115.1	115.2	142.9	2015	1er
	2nd	168.5	180.1	110.4	135.0	106.2	102.6	150.1	98.6	131.5	115.1	115.2	149.8		2ème
	3rd	152.2	180.8	115.3	135.8	107.6	101.9	153.8	98.6	133.7	115.1	113.6	144.5		3ème
	4th	151.6	181.3	115.9	137.1	107.6	102.0	157.2	98.6	133.7	115.1	112.7	144.7		4ème
2016	1st	155.1	180.9	114.3	133.2	107.6	101.8	158.3	99.0	133.7	120.5	112.6	145.7	2016	1st
	2nd	157.3	180.8	111.8	131.7	107.6	101.8	157.6	98.1	133.7	120.5	112.5	146.0		2ème
	3rd	160.9	180.7	111.1	132.0	107.6	101.8	158.6	98.0	133.7	120.5	112.6	147.3		3ème
	4th	162.7	180.7	110.9	132.2	108.8	101.8	158.8	94.4	132.2	120.5	111.1	147.8		4ème
2017	1st	164.9	181	110.4	130.9	108.0	101.9	162.5	94.9	132.7	124.3	110.0	148.8	2017	1er
	2nd	168.9	181	110.7	132.0	108.3	102.0	166.6	94.9	131.3	124.3	110.3	150.8		2ème
	3rd	172.4	181.1	110.5	134.0	108.3	102.0	167.5	94.9	130.7	124.3	110.4	152.6		3ème
	4th	173.1	181	111.4	132.5	108.3	102.0	168.8	94.9	129.5	124.3	110.7	152.7		4ème
2018	1st	174.5	186.1	112.0	134.1	112.7	103.2	169.7	95.2	135.5	110.5	112.2	153.7	2018	1er
	2nd	176.1	186.3	112.1	134.6	113.0	103.9	169.8	94.7	135.8	110.5	112.0	154.4		2ème
	3rd	178.1	186.2	112.7	134.4	113.3	103.9	170.4	94.9	136.0	110.5	111.7	155.3		3ème
	4th	178.5	186.1	113.6	134.7	113.1	103.9	171.2	94.9	136.1	110.5	112.9	155.6		4ème
2019	1st	181.1	187.3	112.8	136.2	113.4	103.2	173.2	95.2	136.4	110.9	114.7	157.0	2019	1er
	2nd	184.2	187.3	112.7	135.0	113.5	103.2	172.8	95.2	137.6	110.9	113.9	158.1		2ème
Port Vila															
2014	1st	150.0	183.8	108.4	129.3	106.4	101.3	146.1	97.7	134.1	110.5	114.8	141.3	2014	1er
	2nd	150.6	184.3	110.6	128.3	106.3	101.6	145.2	98.1	136.3	110.6	115.5	141.4		2ème
	3rd	150.7	185.2	111.4	128.6	106.4	102.5	146.1	98.1	136.0	110.6	115.2	141.7		3ème
	4th	151.4	185.2	111.7	130.0	106.1	102.5	151.4	98.1	133.0	110.6	115.2	142.5		4ème
2015	1st	150.6	185.3	112.0	131.3	105.7	102.6	153.1	98.1	132.8	115.3	115.2	142.8	2015	1er
	2nd	173.6	185.3	112.0	130.6	105.2	102.6	152.5	98.1	133.1	115.3	114.8	151.0		2ème
	3rd	153.8	186.0	118.0	131.8	107.7	101.8	157.0	98.1	135.6	115.3	114.3	144.8		3ème
	4th	152.9	186.4	118.4	132.9	108.0	101.9	160.7	98.1	135.7	115.3	113.8	145.0		4ème
2016	1st	156.3	186.4	115.9	128.6	108.5	101.9	162.1	98.1	133.7	120.8	113.8	145.7	2016	1er
	2nd	159.9	185.9	112.6	126.7	107.9	101.8	161.0	97.1	133.7	120.8	113.7	146.2		2ème
	3rd	164.8	185.9	111.8	126.9	107.3	101.8	161.4	97.1	133.4	120.8	114.0	148.0		3ème
	4th	167.7	185.9	111.6	127.1	107.4	101.8	162.0	93.2	133.4	120.8	112.7	148.9		4ème
2017	1st	170.1	185.8	110.8	125.9	106.3	101.9	165.8	93.8	134.0	125.6	111.5	149.9	2017	1er
	2nd	174.5	185.8	111.0	127.1	106.6	102.0	170.1	93.8	132.6	125.5	112.2	152.0		2ème
	3rd	178.7	186.0	111.0	129.4	106.5	102.0	169.8	93.8	132.6	125.5	112.3	154.1		3ème
	4th	180.6	186.0	111.7	127.6	106.6	102.0	171.3	93.8	131.2	125.5	112.7	154.5		4ème
2018	1st	182.0	191.8	112.3	129.0	111.4	102.9	171.9	94.0	138.5	115.4	114.7	155.9	2018	1er
	2nd	183.6	192.1	112.5	129.4	111.8	103.7	172.1	93.5	138.9	115.4	114.4	156.5		2ème
	3rd	186.2	192.0	113.1	129.2	112.0	103.7	172.7	93.7	139.1	115.4	114.1	157.6		3ème
	4th	186.7	192.0	113.6	129.9	111.7	103.7	173.5	93.7	139.1	115.4	115.1	158.0		4ème
2019	1st	189.7	193.7	112.3	130.4	112.0	102.8	175.3	94.1	139.3	115.8	117.2	159.8	2019	1er
	2nd	193.5	193.7	112.7	130.2	112.1	102.8	174.8	94.1	140.7	115.8	116.5	160.9		2ème
Luganville															
2014	1st	148.8	158.1	104.3	158.9	110.9	102.3	126.6	101.8	120.6	112.8	113.9	142.7	2014	1er
	2nd	149.4	158.6	104.3	158.9	112.7	102.3	130.5	101.8	120.6	112.8	113.9	143.3		2ème
	3rd	149.7	157.2	104.6	160.7	112.3	103.4	131.2	101.8	119.9	113.2	115.8	143.7		3ème
	4th	148.7	157.2	105.1	160.5	110.6	102.5	130.9	101.5	119.6	113.3	115.4	143.1		4ème
2015	1st	147.7	156.5	105.1	160.7	112.0	103.2	136.3	101.3	121.5	114.4	115.6	143.2	2015	1er
	2nd	150.0	155.7	104.4	161.0	111.6	102.6	137.5	101.5	122.5	114.4	116.7	144.2		2ème
	3rd	147.4	156.3	105.1	159.0	114.2	102.7	136.6	101.5	128.9	114.4	108.9	142.6		3ème
	4th	148.1	157.3	106.3	161.1	114.6	103.2	138.8	101.5	129.0	114.4	105.9	143.4		4ème
2016	1st	151.8	155.9	108.2	160.5	117.7	101.6	137.8	103.9	126.7	119.2	105.0	145.9	2016	1er
	2nd	148.3	156.9	109.0	162.5	117.7	101.6	139.4	103.9	126.7	119.2	105.0	144.9		2ème
	3rd	146.9	156.4	108.9	163.4	116.8	101.6	139.9	103.2	127.0	119.2	103.4	144.2		3ème
	4th	144.6	156.4	108.8	163.4	116.5	101.6	141.8	101.2	125.4	119.2	101.1	143.1		4ème
2017	1st	145.8	157.8	109.2	161.8	117.6	101.7	145.4	101.2	125.0	119.7	100.1	143.8	2017	1er
	2nd	148.5	157.8	110.0	162.0	118.0	102.1	147.8	101.2	124.2	119.7	98.6	145.2		2ème
	3rd	149.2	157.9	109.4	162.0	118.5	102.6	155.6	102.2	120.0	119.7	98.2	145.8		3ème
	4th	145.3	157.4	110.7	162.8	118.2	102.3	155.6	101.2	120.2	119.7	98.2	144.1		4ème
2018	1st	146.8	160.1	111.1	166.1	119.8	105.3	158.1	102.1	118.6	93.0	96.6	143.6	2018	1er
	2nd	146.1	160.0	111.2	166.2	119.5	105.3	158.2	102.1	118.4	93.0	96.7	144.2		2ème
	3rd	147.9	159.6	111.4	166.7	120.7	105.7	158.5	102.1	118.4	93.0	96.2	144.3		3ème
	4th	148.1	159.3	114.2	164.2	120.9	105.7	159.5	102.5	119.4	93.0	99.6	144.4		4ème
2019	1st	148.7	158.8	114.9	164.4	121.2	106.5	162.1	102.1	120.2	94.0	98.8	144.8	2019	1er
	2nd	149.2	158.6	114.2	164.5	121.8	106.5	162.6	102.1	120.2	94.0	97.4	145.1		2ème