

STATISTICS UPDATE: CONSUMER PRICE INDEX

RELEASE DATE: 12th August, 2021

MARCH QUARTER 2021 HIGHLIGHTS

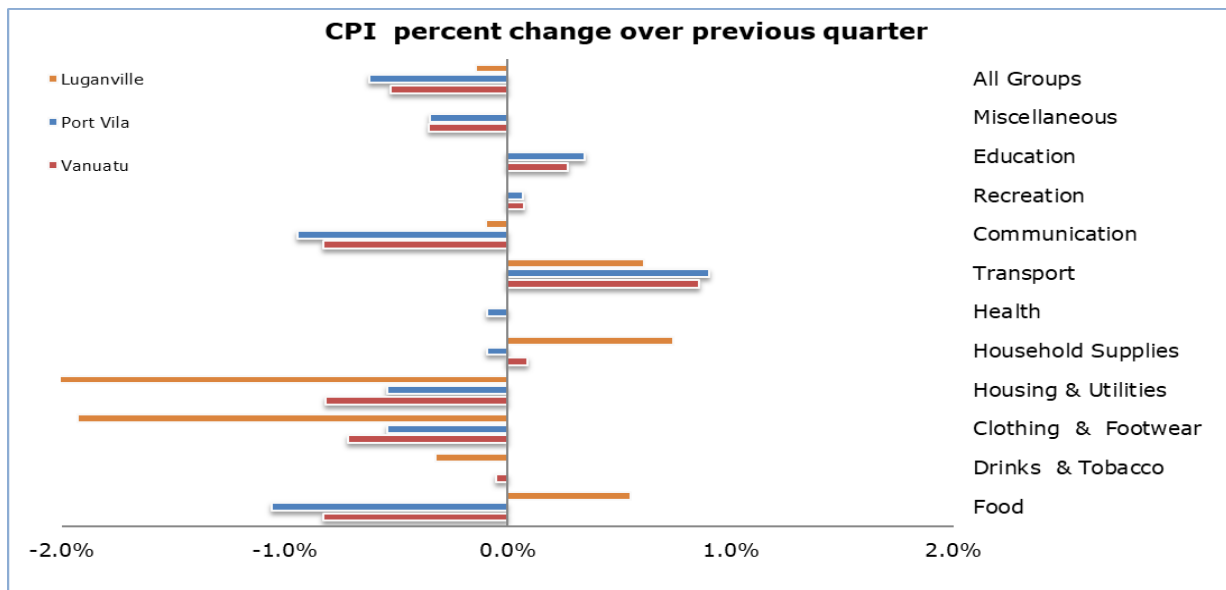


Figure 1: CPI per cent change over previous quarter

CPI QUARTERLY MOVEMENT

The Consumer Price Index (CPI) of March, 2021 indicated a decrease of (-0.5%). Port Vila decreased by (-0.6%) and also Luganville decreased by (-0.1%) compared to the previous quarter. The expenditure groups that contributed to the decrease in the CPI were: Food, Housing Utility and Communication at (-0.8%) respectively. Clothing and Footwear at (-0.7%), Miscellaneous at (-0.4%) and Drinks and Tobacco at (-0.1%). However, the group that increased in price were Transport at (+0.9%), Education at (+0.3%), Housing Supplies and Recreation at (+0.1%) respectively, while Health remain constant. The decrease in price movement in Port Vila was driven by price changes in Bread and Cereal Products, Electricity supply charges and prepaid sim cards. Price changes in Luganville indicate price movement in Local Tobacco and Men's clothing. Cereal Products and Roots crops shows price decrease in both Port Vila and Luganville.

CPI ANNUAL MOVEMENT

When compared to the March quarter of 2020, the Vanuatu index increased by (+5.2%), Port Vila index increased by (+6.3%) while Luganville index slightly decreased by (-1.2%). At national level the expenditure groups that contributed to the increase over the same quarter of last year were: Food (+11.7%), Drinks and Tobacco (+3.8%), Health (+3.5%), Transportation (+1.7%), Recreation (+1.1%) Miscellaneous (+0.8%), Education (+0.3%) and Communication (+0.1%). The increase in these expenditure groups were driven by the increase in price movements of Root crops, Fruits and Vegetables, prescription of medical drugs and mobile phones.

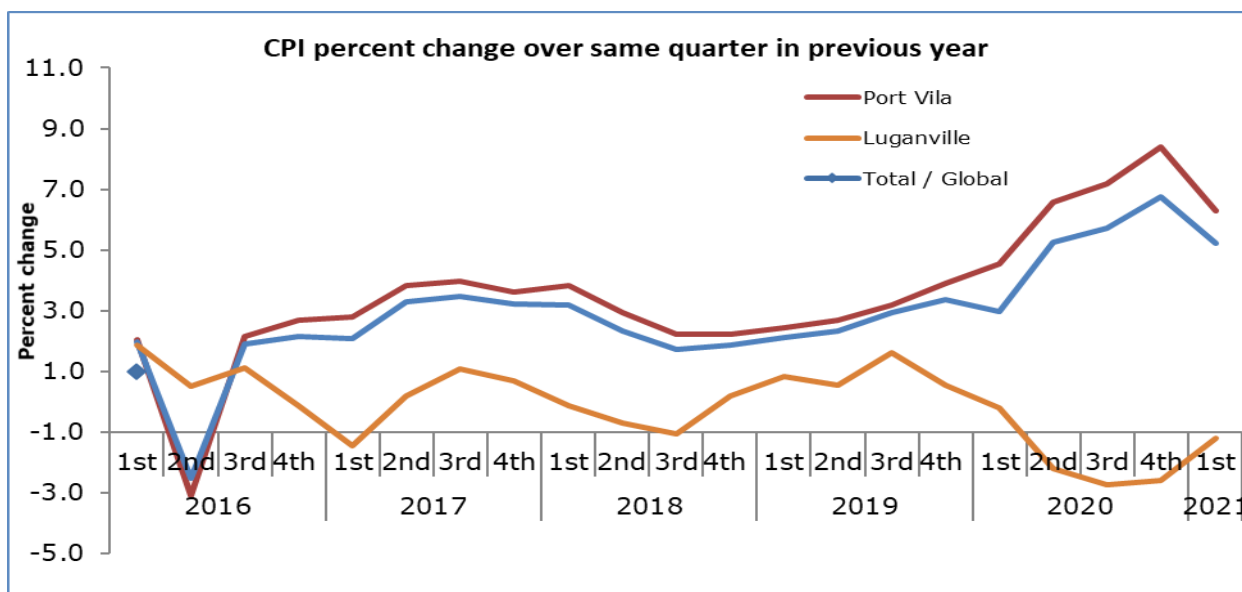


Figure 2: CPI per cent change over same quarter in previous year

UNDERLYING INFLATION

'Underlying inflation' is a measure derived from the CPI excluding items which typically have unstable or volatile prices; because of things like seasonal variation or policy decisions. In March quarter of 2021 underlying inflation increased by (-0.4%) over the previous quarter and decreased by (-1.7%) over the same quarter of 2020.

CONCEPTS AND DEFINITIONS

The Consumer Price Index (CPI) is used to measure the changes in the prices of goods and services purchased by households in Port Vila and Luganville over a period of time. The separate indices for these two major commercial centres are then combined to create the Vanuatu CPI.

This change in prices is sometimes called inflation. Retail stores, supermarkets, liquor outlets, transport operators, service stations and other providers of goods and services help supply the Vanuatu National Statistics Office with the information to calculate the CPI. Prices are collected for exactly the same goods and services each quarter. This ensures that changes in the cost of goods and services over time are not due to changes in the quantity or quality of the goods and services purchased.

ATTACHMENT

Table 1 Consumer Price Index: All Items

Table 2 Consumer Price Index: Expenditure Groups

NEXT UPDATE (QUARTERLY)

August 2021

RELEASE DATE

12th August, 2021

MORE INFORMATION

For statistical enquiries about this topic, please contact:

National Statistics Office: (678) 22110/22111/33040, Voip: 1124

Email: stats@vanuatu.gov.vu

PROVINCIAL STATISTICS OFFICES

Sanma Office

PO Box 273, MFEM Building
Luganville, SANTO
Tel/Fax: (678) 36542
Ext/voip: 6330

Tafea Office

MFEM Building,
Isangel, Tafea
Tel: (678) 88014
Ext/voip: 8361

Malampa Office

MFEM Building
Lakatoro, Malekula
Tel: (678) 48400

Mr. Benue Lenge

Government Statistician

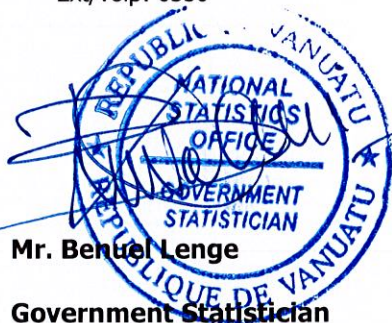


Table 1 Consumer Price Index **Base: 1st Quarter 2000 = 100**
Tableau 1 Indice des prix à la consommation **Base: 1^{er} Trimestre 2000 = 100**

		Consumer Price Indices			Underlying Inflation Index	Rate of Change (%)			Rate of Change (%)				
Year	Quarter	Indice des prix à la consommation			Inflation sous-jacente	Variation par rapport			Variation			Année	Trimestre
		Total / Global	Port Vila	Luganville	Total / Global	Total / Global	Port Vila	Luganville	Total / Global	Port Vila	Luganville		
						Over Previous Year / à l'année précédente			4th Quarter over 4th Quarter of previous year / du 4ème trimestre au 4ème trimestre de l'année précédente				
2017		151.2	152.6	144.7	133.3	3.1	3.7	0.1	3.3	3.8	0.7	2017	
2018		154.8	157.0	144.1	135.2	2.3	2.9	-0.4	1.9	2.3	0.2	2018	
2019		159.0	162.0	145.4	136.3	2.8	3.2	0.9	3.5	4.1	0.6	2019	
2020		167.5	172.7	143.1	135.8	5.3	6.6	-1.6	6.6	8.1	-1.5	2020	
						Over Previous Quarter / au trimestre précédent			Over Same Quarter of previous year / au même trimestre de l'année précédente				
2017	1st	148.8	149.9	143.8	132.3	0.7	0.7	0.5	2.1	2.8	-1.5	2017	1er
	2nd	150.8	152.0	145.2	133.4	1.3	1.4	1.0	3.3	3.8	0.2		2ème
	3rd	152.6	154.1	145.8	133.7	1.2	1.4	0.4	3.5	4.0	1.1		3ème
	4th	152.7	154.5	144.1	133.6	0.1	0.3	-1.2	3.2	3.6	0.7		4ème
2018	1st	153.7	155.9	143.6	134.8	0.7	0.9	-0.3	3.2	3.8	-0.1	2018	1er
	2nd	154.4	156.6	144.2	134.9	0.5	0.4	0.4	2.3	2.9	-0.7		2ème
	3rd	155.3	157.6	144.3	135.2	0.6	0.6	0.1	1.7	2.2	-1.0		3ème
	4th	155.6	158.0	144.4	135.9	0.2	0.3	0.1	1.9	2.2	0.2		4ème
2019	1st	157.0	159.8	144.8	136.3	0.9	1.1	0.3	2.1	2.4	0.8	2019	1er
	2nd	158.1	160.9	145.0	135.9	0.7	0.7	0.1	2.3	2.7	0.6		2ème
	3rd	160.0	162.8	146.7	136.5	1.2	1.2	1.2	2.9	3.2	1.6		3ème
	4th	161.0	164.4	145.2	136.6	0.6	1.0	-1.0	3.4	3.9	0.6		4ème
2020	1st	161.8	165.5	144.5	137.1	0.5	0.7	-0.5	3.0	4.5	-0.2	2020	1er
	2nd	166.9	172.2	141.9	135.3	3.1	3.9	-1.8	5.3	6.6	-2.2		2ème
	3rd	169.7	175.4	142.8	135.2	1.6	1.8	0.6	5.7	7.2	-2.7		3ème
	4th	171.6	177.7	143.0	135.4	1.1	1.3	0.1	6.2	7.5	-1.5		4ème
2021	1st	170.7	176.6	142.8	134.8	-0.5	-0.6	-0.1	5.2	6.3	-1.2	2021	1er

Table 2 Consumer Price Indices by Expenditure Group
Tableau 2 Indice des prix à la consommation par poste de dépense

Base: 1st Quarter 2000 = 100
Base: 1^{er} Trimestre 2000 = 100

Year	Quarter	Food Produits alimentaires	Alcoholic drinks and Tobacco Boisson alcoolisée et tabac	Clothing & Footwear Habillement	Housing & Utilities Loyer, eau, et énergie etc.	Household Supplies Mobilier et équipement ménager etc.	Health Santé	Transport	Communication	Recreation Loisir	Education	Miscellaneous Autres	All Groups Indice Global	Année	Trimestre
Vanuatu															
2016	1st	155.1	180.9	114.3	133.2	107.6	101.8	158.3	99.0	133.7	120.5	112.6	145.7	2016	1st
	2nd	157.3	180.8	111.8	131.7	107.6	101.8	157.6	98.1	133.7	120.5	112.5	146.0		2ème
	3rd	160.9	180.7	111.1	132.0	107.6	101.8	158.6	98.0	133.7	120.5	112.6	147.3		3ème
	4th	162.7	180.7	110.9	132.2	108.8	101.8	158.8	94.4	132.2	120.5	111.1	147.8		4ème
2017	1st	164.9	181	110.4	130.9	108.0	101.9	162.5	94.9	132.7	124.3	110.0	148.8	2017	1er
	2nd	168.9	181	110.7	132.0	108.3	102.0	166.6	94.9	131.3	124.3	110.3	150.8		2ème
	3rd	172.4	181.1	110.5	134.0	108.3	102.0	167.5	94.9	130.7	124.3	110.4	152.6		3ème
	4th	173.1	181	111.4	132.5	108.3	102.0	168.8	94.9	129.5	124.3	110.7	152.7		4ème
2018	1st	174.5	186.1	112.0	134.1	112.7	103.2	169.7	95.2	135.5	110.5	112.2	153.7	2018	1er
	2nd	176.1	186.3	112.1	134.6	113.0	103.9	169.8	94.7	135.8	110.5	112.0	154.4		2ème
	3rd	178.1	186.2	112.7	134.4	113.3	103.9	170.4	94.9	136.0	110.5	111.7	155.3		3ème
	4th	178.5	186.1	113.6	134.7	113.1	103.9	171.2	94.9	136.1	110.5	112.9	155.6		4ème
2019	1st	181.1	187.3	112.8	136.2	113.4	103.2	173.2	95.2	136.4	110.9	114.7	157.0	2019	1er
	2nd	184.2	187.3	112.7	135.0	113.5	103.2	172.8	95.2	137.6	110.9	113.9	158.1		2ème
	3rd	188.8	187.3	112.3	135.1	114.4	103.2	172.9	95.7	137.6	110.9	114.0	160.0		3ème
	4th	191.4	187.2	113.0	135.6	113.8	103.3	172.9	95.7	137.0	110.9	112.9	161.0		4ème
2020	1st	193.3	188.3	113.4	135.6	114.1	103.6	172.9	95.9	136.2	111.3	111.8	161.8	2020	1er
	2nd	206.5	188.0	116.7	135.2	115.3	107.9	171.9	95.9	135.5	111.3	112.7	166.9		2ème
	3rd	213.1	192.0	115.8	135.9	114.1	109.1	171.4	95.9	136.0	111.3	112.7	169.7		3ème
	4th	217.8	195.5	112.0	135.0	113.7	107.2	174.3	96.8	137.6	111.3	113.1	171.6		4ème
2021	1st	216.0	195.4	111.2	133.9	113.8	107.2	175.8	96.0	137.7	111.6	112.7	170.7	2021	1er
Port Vila															
2016	1st	156.3	186.4	115.9	128.6	108.5	101.9	162.1	98.1	133.7	120.8	113.8	145.7	2016	1er
	2nd	159.9	185.9	112.6	126.7	107.9	101.8	161.0	97.1	133.7	120.8	113.7	146.2		2ème
	3rd	164.8	185.9	111.8	126.9	107.3	101.8	161.4	97.1	133.4	120.8	114.0	148.0		3ème
	4th	167.7	185.9	111.6	127.1	107.4	101.8	162.0	93.2	133.4	120.8	112.7	148.9		4ème
2017	1st	170.1	185.8	110.8	125.9	106.3	101.9	165.8	93.8	134.0	125.6	111.5	149.9	2017	1er
	2nd	174.5	185.8	111.0	127.1	106.6	102.0	170.1	93.8	132.6	125.5	112.2	152.0		2ème
	3rd	178.7	186.0	111.0	129.4	106.5	102.0	169.8	93.8	132.6	125.5	112.3	154.1		3ème
	4th	180.6	186.0	111.7	127.6	106.6	102.0	171.3	93.8	131.2	125.5	112.7	154.5		4ème
2018	1st	182.0	191.8	112.3	129.0	111.4	102.9	171.9	94.0	138.5	115.4	114.7	155.9	2018	1er
	2nd	183.6	192.1	112.5	129.4	111.8	103.7	172.1	93.5	138.9	115.4	114.4	156.5		2ème
	3rd	186.2	192.0	113.1	129.2	112.0	103.7	172.7	93.7	139.1	115.4	114.1	157.6		3ème
	4th	186.7	192.0	113.6	129.9	111.7	103.7	173.5	93.7	139.1	115.4	115.1	158.0		4ème
2019	1st	189.7	193.7	112.3	130.4	112.0	102.8	175.3	94.1	139.3	115.8	117.2	159.8	2019	1er
	2nd	193.5	193.7	112.7	130.2	112.1	102.8	174.8	94.1	140.7	115.8	116.5	160.9		2ème
	3rd	198.4	193.7	111.8	130.0	113.1	102.8	174.8	94.1	140.7	115.8	116.5	162.8		3ème
	4th	202.7	193.7	112.8	130.8	112.4	102.8	174.8	94.7	139.9	115.6	115.6	164.4		4ème
2020	1st	205.2	195.4	113.4	130.9	112.8	103.2	174.9	94.7	139.2	116.1	114.1	165.5	2020	1er
	2nd	223.2	195.4	117.5	131.0	112.9	108.0	173.4	94.7	138.3	116.1	115.1	172.2		2ème
	3rd	231.1	200.5	116.4	131.0	112.9	109.4	173.0	94.7	138.9	116.1	115.1	175.4		3ème
	4th	237.0	205.1	111.7	130.0	112.4	107.3	176.4	95.7	140.8	116.1	115.5	177.7		4ème
2021	1st	234.5	205.1	111.1	129.3	112.3	107.2	178	94.8	140.9	116.5	115.1	176.6	2021	1er
Luganville															
2016	1st	151.8	155.9	108.2	160.5	117.7	101.6	137.8	103.9	126.7	119.2	105.0	145.9	2016	1er
	2nd	148.3	156.9	109.0	162.5	117.7	101.6	139.4	103.9	126.7	119.2	105.0	144.9		2ème
	3rd	146.9	156.4	108.9	163.4	116.8	101.6	139.9	103.2	127.0	119.2	103.4	144.2		3ème
	4th	144.6	156.4	108.8	163.4	116.5	101.6	141.8	101.2	125.4	119.2	101.1	143.1		4ème
2017	1st	145.8	157.8	109.2	161.8	117.6	101.7	145.4	101.2	125.0	119.7	100.1	143.8	2017	1er
	2nd	148.5	157.8	110.0	162.0	118.0	102.1	147.8	101.2	124.2	119.7	98.6	145.2		2ème
	3rd	149.2	157.9	109.4	162.0	118.5	102.6	155.6	102.2	120.0	119.7	98.2	145.8		3ème
	4th	145.3	157.4	110.7	162.8	118.2	102.3	155.6	101.2	120.2	119.7	98.2	144.1		4ème
2018	1st	146.8	160.1	111.1	166.1	119.8	105.3	158.1	102.1	118.6	120.0	96.6	143.6	2018	1er
	2nd	146.1	160.0	111.2	166.2	119.5	105.3	158.2	102.1	118.4	120.0	96.7	144.2		2ème
	3rd	147.9	159.6	111.4	166.7	120.7	105.7	158.5	102.1	118.4	120.0	96.2	144.3		3ème
	4th	148.1	159.3	114.2	164.2	120.9	105.7	159.5	102.5	119.4	120.0	99.6	144.4		4ème
2019	1st	148.7	158.8	114.9	164.4	121.2	106.5	162.1	102.1	120.2	120.0	98.0	144.8	2019	1er
	2nd	149.2	158.6	114.2	164.5	121.8	106.5	162.6	102.1	120.2	120.0	97.4	145.1		2ème
	3rd	152.8	158.4	114.5	165.0	121.7	106.5	162.6	102.1	120.2	120.0	98.2	146.7		3ème
	4th	148.8	158.3	114.1	164.6	121.7	106.5	162.6	102.1	120.2	120.0	97.8	145.2		4ème
2020	1st	148.3	157.4	114.0	164.4	121.2	106.6	162.7	103.4	119.4	120.0	97.6	144.5	2020	1er
	2nd	142.4	156.3	114.0	160.0	129.4	106.8	164.0	103.4	119.4	120.0	97.6	141.9		2ème
	3rd	144.3	156.1	114.0	165.9	120.9	106.8	163.2	103.4	119.4	120.0	97.6	142.8		3ème
	4th	144.4	156.1	114.0	165.9	121.3	106.8	163.5	103.4	119.4	120.0	97.6	143.0		4ème
2021	1st	145.2	155.6	111.8	162.0	122.2	106.8	164.5	103.3	119.4	120.0	97.6	142.8	2021	1er