

STATISTICS UPDATE: MERCHANDISE TRADE STATISTICS

SEPTEMBER 2018 HIGHLIGHTS

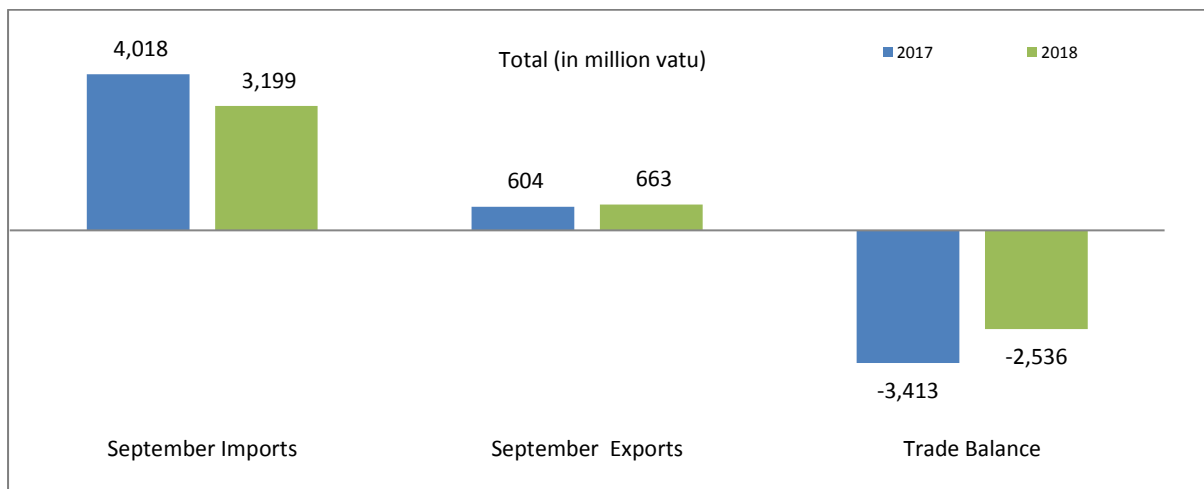


Figure 1: Terms of trade September 2017 and September 2018 (Million Vatu)

Merchandise trade provisional figures for September 2018 recorded a deficit balance of VT 2,536 million, showing an improvement of VT 878 million or 26% compared to September 2017. This trade deficit balance was due to the value of total imports at VT 3,199 million, exceeded that of total exports at VT 663 million.

Domestic export earnings (excluding re-exports) for September 2018 stood at VT 452 million, a slight decrease of 16% or VT 88 million over September 2017.

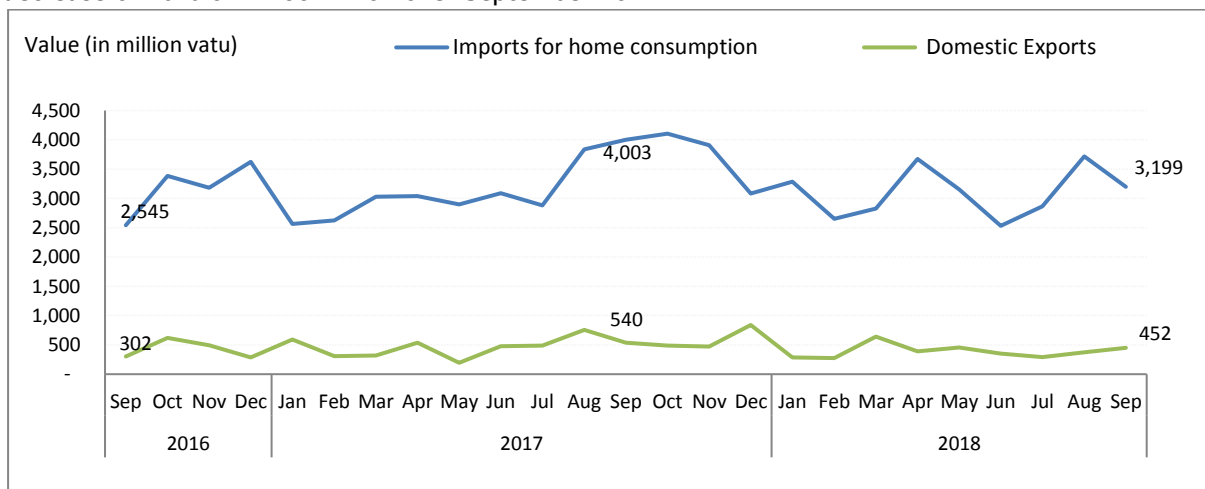


Figure 2: Overseas trade exports and imports for home consumption (million vatu)

EXPORTS

In September 2018, for the main export commodities; kava constituted the largest share in value at VT 203 million or 45%, followed by copra at 37%, fish at 4%, beef at 3%, coconut oil and cocoa at 2% each and other products at 8%. Other products comprised mainly on prepared food stuff and beverages and personal effects and base metals.

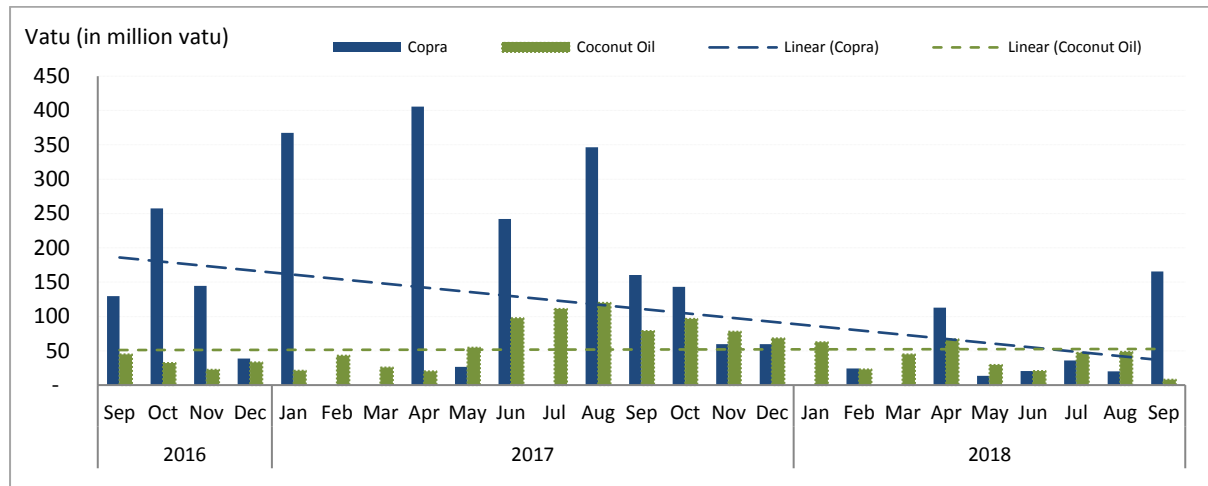


Figure 3: Exports of Coconut Products (million vatu)

Coconut product exports in total value amounted to VT173 million in September 2018 compared to VT 245 million over September 2017, showing a decrease of 29% or VT 72 million. The decrease was due to fall in coconut oil exports at 90% or VT 71 million over September 2017.

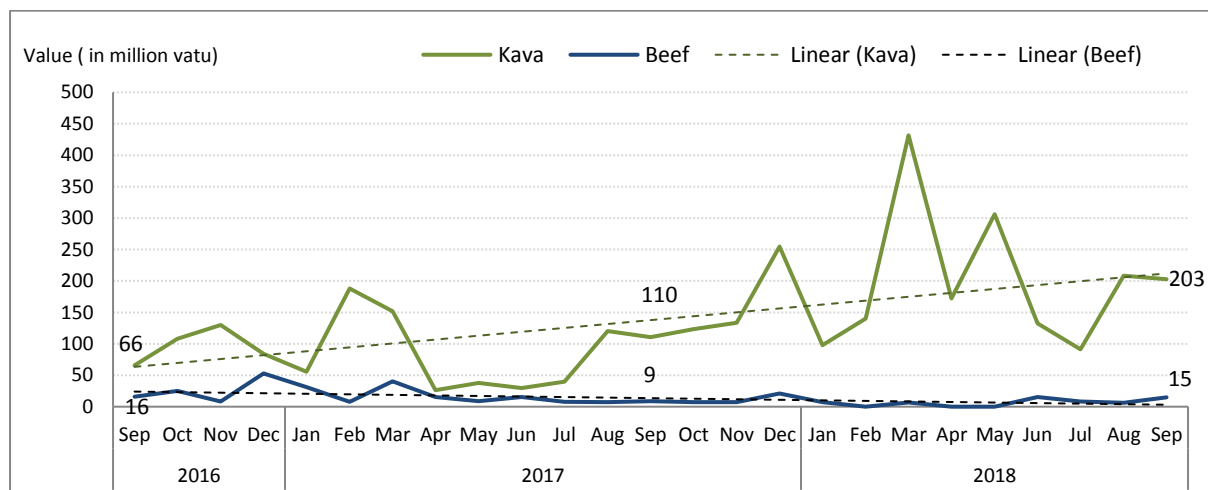


Figure 4: Exports of Kava and Beef Products (million vatu)

Exports of kava and beef products in value increased in September 2018. Kava exports increased by 84% or VT 93 million and beef exports by 67% or VT 6 million compared to September 2017

IMPORTS

In terms of share of commodity groups to total imports receipts, food and live animals represented the largest value (C.I.F) of VT 834 million or 26% of the total imports for home consumption in September 2018, followed by machines and transport equipments at 21%, basic manufactured goods at 17%, mineral fuels at 10%, miscellaneous manufactured products at 9%, crude materials and chemical products at 6% each, beverages and tobacco at 4%, goods not classified elsewhere at 1% and oils and fats at less than 1 %.

Compared to September 2017, the commodity groups which increased were: food and live animals at 32% or VT 202 million, crude materials at VT 126 million and chemical products at 9% or VT 17 million. However, the rest of the commodity groups that decreased were: Goods not elsewhere classified (N.E.C) at (63%), machines and transport equipment at (54%), oils, fats and waxes at (44%), miscellaneous manufactured products at (31%), mineral fuels at (26%), basic manufactured products at (15%) and beverages and tobacco at (5%) in September 2018.

REVISIONS TO IMPORTS AND EXPORTS STATISTICS

The Vanuatu National Statistics Office receives import and export statistics data on quantity and value from the Department of Customs and Inland Revenue's ASYCUDA merchandise trade processing system. On occasion revisions are made to import and export entries after publication. The Vanuatu National Statistics Office makes every possible effort to check the data and resolve inconsistencies and anomalies with colleagues from the Department of Customs and Inland Revenue prior to publishing. Where revisions are necessary these are highlighted in the statistical tables.

CONCEPTS AND DEFINITIONS

- **Imports for Home Consumption** are goods, materials or articles purchased in other countries and brought into Vanuatu and cleared through customs procedures for home consumption. Imports for home consumption are valued on a C.I.F. (cost, insurance, freight) basis. This means that for each commodity, the value recorded includes the factory price, the cost of packaging, the freight cost from overseas to Vanuatu ports and the insurance.
- **Exports** are expressed in F.O.B. (free on board) prices. It means the total value includes the production cost and the transport cost to the Vanuatu port of export.
- **Imports for re-export** refers to imports destined to be re-exported without having undergone any transformation, or only minor ones. This is especially the case of duty free goods and fuel "imported" into the country and sold to non-resident airline operators or ships.
- **Re-exports** are goods, materials or articles exported in the same condition as they were imported, and imported goods, which have undergone operations such as repair, repacking, or bottling which leave them essentially unchanged before exporting.

ATTACHED

- Table 1: Summary of Merchandise trade
- Table 2: Principal domestic exports, value
- Table 3: Principal domestic exports, quantity
- Table 4: Imports cleared for home consumption, value

NEXT UPDATE (MONTHLY)

October 2018

RELEASE DATE

28th February 2019

FOR MORE INFORMATION

For statistical enquiries about this topic, Please do not hesitate to contact:


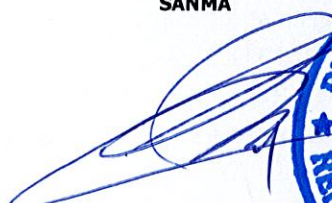
Vanuatu National Statistics Office: (678) 22110/22111/33040, Voip: 1124

Email: stats@vanuatu.gov.vu

Website: <http://www.vnso.gov.vu> Facebook: www.facebook.com/NSOVU

PROVINCIAL STATISTICS OFFICES

Millennium Building
Luganville, Santo
SANMA



Mr Andy Calo

Government Statistician

Table 1 Summary of Overseas Trade
Tableau 1 Récapitulatif du commerce extérieur

In Million Vatu
En millions de Vatu

Year / Quarter	EXPORTS F.O.B / EXPORTATION FAB						IMPORTS C.I.F / IMPORTATIONS CAF						Année Trimestre	
	Domestic Exports Exportation de produits locaux			Re-exports	Total Exports	Imports for Home Consumption / Importations destinées à la Consommation intérieure			Imports for Re- exports	Total Imports	Trade Balance	Balance Ratio		
	Luganville	Port Vila	Total	Ré- exportations	Total des Exportations (E)	Luganville	Port Vila	Total	Importations pour ré- exportations	Total des Importations (I)	Déficit Commercial (E)-(I)	Taux de Couverture (E)/(I)		
2013	2,233	1,419	3,653	-	3,653	4,184	25,262	29,446	207	29,652	(26,000)	0.1	2013	
2014	4,274	1,826	6,100	-	6,100	4,587	25,610	30,197	237	30,435	(24,335)	0.2	2014	
2015	2,971	1,278	4,249	-	4,249	6,298	33,500	39,798	190	39,989	(35,740)	0.1	2015	
2016	3,940	1,506	5,446	-	5,446	5,722	34,251	39,973	1,435	41,408	(35,962)	0.1	2016	
2017	4,219	1,689	5,909	r	597	6,506	5,957	33,102	39,060	816	39,876	(33,370)	0.2	2017
2017 1st	986	232	1,218	-	1,218	1,050	7,166	8,216	60	8,276	(7,059)	0.1	2017 1er	
2nd	1,101	107	1,208	-	1,208	1,348	7,681	9,029	39	9,068	(7,860)	0.1	2ème	
3rd	1,176	509	1,685	129	1,814	1,425	9,296	10,721	42	10,762	(8,949)	0.2	3ème	
4th	957	842	1,798	469	2,267	2,135	8,959	11,095	674	11,769	(9,502)	0.2	4ème	
2018 1st	494	707	1,201	487	1,688	1,359	7,408	8,767	211	8,978	(7,290)	0.2	2018 1er	
2nd	821	377	1,198	636	1,834	1,958	7,401	9,359	207	9,566	(7,732)	0.2	2ème	
3rd	843	271	1,114	466	1,580	1,741	8,039	9,779	-	9,779	(8,200)	0.2	3ème	
2017 Jan	488	103	591	-	591	315	2,248	2,563	13	2,576	(1,984)	0.2	2017 Jan	
Feb	249	58	307	-	307	290	2,334	2,623	12	2,635	(2,328)	0.1	Fev	
Mar	248	71	319	-	319	445	2,584	3,030	36	3,066	(2,747)	0.1	Mar	
Apr	496	42	538	-	538	453	2,585	3,038	12	3,050	(2,513)	0.2	Apr	
May	156	38	194	-	194	348	2,552	2,900	14	2,915	(2,720)	0.1	May	
Jun	449	27	476	-	476	546	2,544	3,090	13	3,103	(2,627)	0.2	Jun	
Jul	188	200	389	-	389	327	2,553	2,880	11	2,891	(2,502)	0.1	Jul	
Aug	589	167	757	64	821	688	3,150	3,838	16	3,854	(3,033)	0.2	Aug	
Sep	398	142	540	65	604	410	3,593	4,003	15	4,018	(3,413)	0.2	Sep	
Oct	364	126	490	168	658	803	3,303	4,105	42	4,147	(3,490)	0.2	Oct	
Nov	289	180	469	164	633	596	3,311	3,907	573	4,481	(3,848)	0.1	Nov	
Dec	304	535	839	137	976	736	2,346	3,082	59	3,141	(2,165)	0.3	Dec	
2018 Jan	175	113	287	173	460	477	2,808	3,286	22	3,308	(2,847)	0.1	2018 Jan	
Feb	136	139	274	137	412	255	2,399	2,654	2	2,656	(2,244)	0.2	Feb	
Mar	184	456	640	176	816	627	2,201	2,828	187	3,015	(2,199)	0.3	Mar	
Apr	327	63	390	165	555	1,065	2,608	3,673	104	3,776	(3,221)	0.1	Apr	
May	308	147	455	162	617	499	2,656	3,154	61	3,215	(2,598)	0.2	May	
Jun	186	167	354	308	662	394	2,138	2,532	43	2,575	(1,913)	0.3	Jun	
Jul	215	74	289	109	398	488	2,376	2,864	-	2,864	(2,466)	0.1	Jul	
Aug	269	103	373	146	518	586	3,131	3,717	-	3,717	(3,198)	0.1	Aug	
Sep	359	93	452	212	663	667	2,532	3,199	-	3,199	(2,536)	0.2	Sep	

Source: Department of Customs and Inland Revenue / Service des Douanes et Contributions Indirectes (r) revised data

Note: Totals may be slightly different due to roundings

Table 2 Principal Domestic Exports, in Value
Tableau 2 Principales exportations de produits locaux, en valeur

In million Vatu
En millions de Vatu

Year Quarter	Copra	Coconut oil	Beef veal	Cocoa	Shell	Sawn Timber	Cowhides	Kava	Coffee	Vanilla	Coconut Meal	Root crops	Live Cattle	Live Fish	Alcoholic Drink	Fish	Other products	Total	Année Trimestre
	Coprah	Huile de coco	Viande bovine	Cacao	Coquillages	Bois débité	Cuirs et peaux		Café	Vanille	Farine de coprah	Récolte de racines	Bétail vivant	Poisson vivant	Boissons Alcoolisées	Poisson	Autres produits		
2013	452	458	326	294	30	165	28	834	6	7	143	-	-	88	116	139	566	3,651	2013
2014	1,485	1,081	441	454	44	425	27	807	28	4	117	0	-	142	3	10	1,032	6,100	2014
2015	749	826	344	330	27	378	18	180	11	0	331	0	-	116	1	-	938	4,249	2015
2016	1,735	579	318	409	21	125	7	1,206	12	0	92	25	-	53	2	14	848	5,446	2016
2017	1,811	814	178	164	5	361	3	1,270	14	0	65	0	-	53	47	28	1,097	5,909	2017
2016 1st	415	174	56	65	9	28	4	397	2	-	54	-	-	9	-	-	377	1,593	2016 1er
2nd	409	180	121	38	-	29	1	181	4	0	12	0	-	17	1	-	171	1,164	2ème
3rd	469	138	55	127	11	17	-	305	4	0	10	-	-	12	1	-	145	1,295	3ème
4th	441	88	86	180	-	51	1	322	2	0	16	25	-	15	0	14	154	1,395	4ème
2017 1st	368	90	79	39	5	72	2	395	4	0	9	-	-	22	-	-	132	1,217	2017 1er
2nd	674	172	40	37	-	96	1	93	2	0	13	0	-	13	-	-	67	1,208	2ème
3rd	507	310	24	54	-	73	-	270	4	-	23	-	-	10	12	14	385	1,685	3ème
4th	262	242	35	34	-	119	-	511	3	0	20	-	-	8	35	14	514	1,799	4ème
2018 1st	24	130	14	11	-	61	-	670	5	0	14	0	-	4	0	-	268	1,201	2018 1er
2nd	147	116	15	56	-	34	-	611	1	-	11	0	1	2	20	0	182	1,198	2ème
3rd	221	104	29	96	-	2	-	502	10	0	10	-	-	-	-	16	123	1,114	3ème
2017 Jan	368	21	31	29	5	10	-	56	2	0	2	-	-	8	-	-	60	591	2017 Jan
Feb	-	43	8	3	-	11	2	188	1	-	5	-	-	5	-	-	41	307	Fev
Mar	-	26	40	7	-	51	-	152	1	-	1	-	-	9	-	-	32	319	Mar
Apr	406	20	16	3	-	41	-	26	2	-	1	-	-	6	-	-	17	538	Apr
May	27	54	9	5	-	30	1	38	0	0	2	0	-	4	-	-	25	194	May
Jun	242	97	15	29	-	26	-	30	0	-	10	-	-	3	-	-	24	476	Jun
Jul	-	111	8	18	-	17	-	40	-	-	10	-	-	2	-	-	183	389	Jul
Aug	346	120	7	16	-	22	-	120	0	-	7	-	-	3	0	-	115	757	Aug
Sep	160	79	9	20	-	35	-	110	4	-	6	-	-	4	12	14	87	540	Sep
Oct	143	96	7	6	-	35	-	123	-	-	8	-	-	3	17	-	52	490	Oct
Nov	59	78	7	9	-	39	-	134	2	0	7	-	-	2	17	14	101	469	Nov
Dec	60	68	21	19	-	45	-	255	1	-	6	-	-	3	1	-	360	840	Dec
2018 Jan	-	62	7	3	-	17	-	98	1	-	6	-	-	2	0	-	91	287	2018 Jan
Feb	24	23	-	0	-	44	-	140	2	0	4	0	-	1	-	-	36	274	Feb
Mar	-	45	7	8	-	-	-	432	2	-	4	-	-	1	-	-	142	640	Mar
Apr	113	67	-	1	-	8	-	172	0	-	7	-	-	1	1	-	19	390	Apr
May	13	29	-	18	-	-	-	306	1	-	2	-	-	1	1	-	83	454	May
Jun	21	20	15	37	-	26	-	133	0	-	2	0	1	-	18	0	80	354	Jun
Jul	36	47	8	64	-	1	-	91	1	-	6	-	-	-	-	-	35	289	Jul
Aug	20	49	6	25	-	-	-	208	8	-	4	-	-	-	-	-	53	373	Aug
Sep	165	8	15	7	-	1	-	203	1	0	-	-	-	-	-	16	35	452	Sep

Source: Department of Customs and Inland Revenue / Service des Douanes et Contributions Indirectes (r) revised data

Note: Totals may be slightly different due to roundings

Table 3 Principal Domestic Exports, in Quantity
Tableau 3 Principales exportations, en quantité

In tonnes
En tonnes

Year / Quarter	Copra	Coconut oil	Beef veal	Cocoa	Shell	Cowhides	Kava	Coffee	Vanilla	Coconut Meal	Root crops	Live Cattle	Live Fish	Fish	Année Trimestre
	Coprah	Huile de coco	Viande bovine	Cacao	Coquillages	Cuir et peaux		Café	Vanille	Farine de coprah	Récolte de racines	Bétail vivant	Poisson vivant	Poisson	
2013	12,508	5,535	703	1,649	10	402	819	6	2	7,692	-	-	77	391	2013
2014	25,194	9,208	1,014	2,025	13	287	786	28	1	4,786	1	-	126	28	2014
2015	12,584	6,570	677	1,282	8	203	158	9	-	5,011	0	-	110	-	2015
2016	27,932	6,056	554	2,228	6	89	1,052	12	0	2,741	16	-	64	5	2016
2017	22,443	6,750	329	1,010	2	37	1,150	14	0	2,659	0	-	35	106	2017
2016 1st	6,927	1,821	109	646	3	58	300	2	-	1,541	-	-	8	-	2016 1er
2nd	6,437	1,870	223	164	-	13	156	4	0	340	0	-	12	-	2ème
3rd	9,114	1,380	102	437	4	-	286	4	0	193	0	-	32	-	3ème
4th	5,455	985	121	981	-	19	309	2	-	667	16	-	11	5	4ème
2017 1st	4,189	899	144	208	2	20	377	6	0	378	-	-	14	-	2017 1er
2nd	8,293	1,637	71	225	-	17	33	1	0	578	0	-	8	-	2ème
3rd	6,400	2,342	43	378	-	-	246	4	-	821	-	-	8	51	3ème
4th	3,562	1,872	71	200	-	-	494	3	0	881	-	-	5	55	4ème
2018 1st	291	1,061	30	90	-	-	192	5	0	698	1	-	3	-	2018 1er
2nd	1,652	1,094	29	295	-	-	273	0	-	537	0	-	3	0	2ème
3rd	4,535	965	59	547	-	-	145	6	0	437	-	-	-	-	3ème
2017 Jan	4,189	210	55	148	2	-	54	3	0	91	-	-	5	-	2017 Jan
Feb	-	433	15	14	-	20	180	1	-	235	-	-	3	-	Fev
Mar	-	255	74	46	-	-	143	1	-	52	-	-	5	-	Mar
Apr	4,968	210	27	15	-	-	8	1	-	41	-	-	4	-	Apr
May	340	755	16	30	-	17	13	0	0	89	0	-	2	-	May
Jun	2,985	672	28	180	-	-	11	0	-	448	-	-	2	-	Jun
Jul	-	798	15	108	-	-	17	-	-	254	-	-	2	-	Jul
Aug	4,406	959	13	90	-	-	119	0	-	317	-	-	3	-	Aug
Sep	1,994	585	16	180	-	-	110	4	-	250	-	-	3	51	Sep
Oct	1,962	652	13	30	-	-	118	-	-	350	-	-	2	-	Oct
Nov	800	632	13	51	-	-	129	2	0	263	-	-	2	55	Nov
Dec	800	588	45	119	-	-	247	1	-	269	-	-	2	-	Dec
2018 Jan	-	420	15	15	-	-	33	1	-	284	-	-	1	-	2018 Jan
Feb	291	217	-	2	-	-	41	2	0	216	1	-	1	-	Feb
Mar	-	424	15	73	-	-	118	2	-	198	-	-	1	-	Mar
Apr	1,269	631	-	13	-	-	51	0	-	341	-	-	1	-	Apr
May	147	274	-	88	-	-	177	0	-	99	-	-	1	-	May
Jun	236	189	29	194	-	-	45	0	-	97	0	-	1	0	Jun
Jul	450	462	17	318	-	-	36	1	-	273	-	-	-	-	Jul
Aug	255	462	13	147	-	-	52	4	-	164	-	-	-	-	Aug
Sep	3,830	41	28	82	-	-	57	1	0	-	-	-	-	-	Sep

Source: Department of Customs and Inland Revenue / Service des Douanes et Contributions Indirectes (r) revised data

Table 4 Imports Cleared for Home Consumption, in Value

Tableau 4 Importations destinées à la consommation intérieure par produit selon la Classification type pour le commerce international, en valeur

**In million Vatu
En million de Vatu**

Year	Quarter	Food & Live Animals	Beverages & Tobacco	Crude Materials Except Fuels	Mineral Fuels	Oils, Fats & Waxes	Chemical Products	Basic Manufactured Products	Machines & Transport Equipment	Miscellaneous Manufactured Goods	Goods N.E.C.	Total	Année	Trimestre
		Produits alimentaires et animaux vivants	Boissons et tabacs	Matières brutes non combustibles	Energie fossile	Huiles et graisses animales et végétales	Produits chimiques	Produits manufacturés	Machines et matériels de transports	Produits manufacturés divers	Articles et transactions, N.C.A			
2013		6,068	1,146	510	4,599	124	2,685	3,950	6,881	3,165	319	29,446	2013	
2014		5,904	1,176	470	5,290	107	2,269	3,627	7,960	3,110	285	30,197	2014	
2015		8,360	1,096	743	4,238	141	2,396	9,785	9,408	3,577	55	39,798	2015	
2016		8,449	1,293	757	3,405	141	2,605	7,355	10,341	5,203	423	39,972	2016	
2017		8,059	1,481	732	3,873	165	2,671	6,344	11,362	3,702	670	39,060	2017	
2016	1st	2,587	327	114	733	33	505	1,490	3,041	684	2	9,514	2016	1er
	2nd	1,721	299	174	635	31	757	2,320	2,346	1,586	29	9,898		2ème
	3rd	1,975	318	220	823	38	632	1,792	2,436	1,868	267	10,369		3ème
	4th	2,166	350	249	1,215	39	711	1,753	2,518	1,066	125	10,192		4ème
2017	1st	1,531	473	154	590	21	666	1,506	2,244	820	210	8,216	2017	1er
	2nd	1,771	321	146	1,424	44	655	1,573	2,152	810	134	9,029		2ème
	3rd	2,090	285	247	782	51	644	1,599	3,864	1,008	152	10,721		3ème
	4th	2,667	401	185	1,077	50	705	1,667	3,102	1,064	175	11,095		4ème
2018	1st	1,494	304	1,289	1,013	24	506	1,072	2,105	782	177	8,767	2018	1er
	2nd	1,846	278	495	1,016	31	669	1,202	2,902	775	146	9,359		2ème
	3rd	2,176	375	530	1,072	38	631	1,522	2,378	918	140	9,780		3ème
2017	Jan	424	150	47	43	16	205	459	824	280	114	2,563	2017	Jan
	Feb	488	110	44	497	1	176	454	543	268	43	2,623		Fev
	Mar	619	213	63	50	4	285	593	877	271	54	3,030		Mar
	Apr	528	79	38	679	10	174	467	789	238	35	3,038		Apr
	May	666	110	57	30	17	226	695	795	282	21	2,900		May
	Jun	576	132	50	714	17	255	410	568	290	78	3,090		Jun
	Jul	646	74	76	40	17	183	351	1,130	314	48	2,880		Jul
	Aug	812	86	94	290	13	276	628	1,311	291	38	3,838		Aug
	Sep	632	126	77	452	21	186	619	1,422	403	66	4,003		Sep
	Oct	1,037	93	76	235	27	262	688	1,291	354	42	4,105		Oct
	Nov	867	174	47	512	11	231	530	1,084	391	60	3,907		Nov
	Dec	763	134	62	330	12	213	449	727	319	73	3,082		Dec
2018	Jan	458	84	341	512	15	202	488	809	328	48	3,286	2018	Jan
	Feb	505	133	264	440	1	145	280	564	228	93	2,654		Feb
	Mar	531	86	685	60	8	159	304	732	226	37	2,828		Mar
	Apr	492	82	386	318	5	210	308	1,597	253	22	3,673		Apr
	May	831	120	33	78	19	257	594	819	312	92	3,154		May
	Jun	523	76	75	620	8	202	300	486	210	32	2,532		Jun
	Jul	723	136	101	43	18	206	402	851	312	72	2,864		Jul
	Aug	619	120	226	694	8	222	591	866	327	43	3,717		Aug
	Sep	834	119	203	335	12	202	529	661	278	25	3,199		Sep

Source: Department of Customs and Inland Revenue / Service des Douanes et Contributions Indirectes