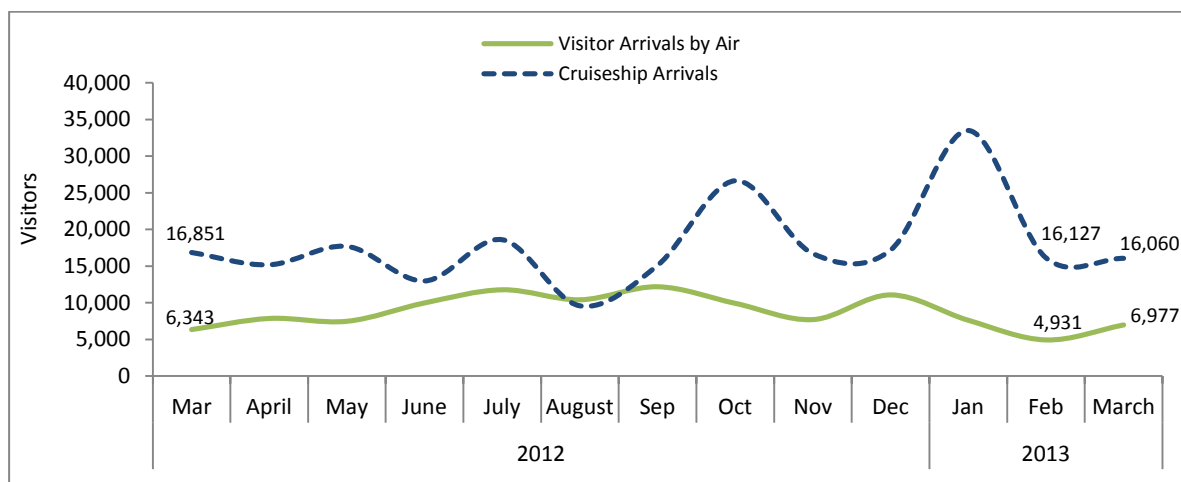


STATISTICS UPDATE: INTERNATIONAL MIGRATION



MARCH 2013 HIGHLIGHTS

Figure 1: Air and Day visitors: March 2012 to March 2013



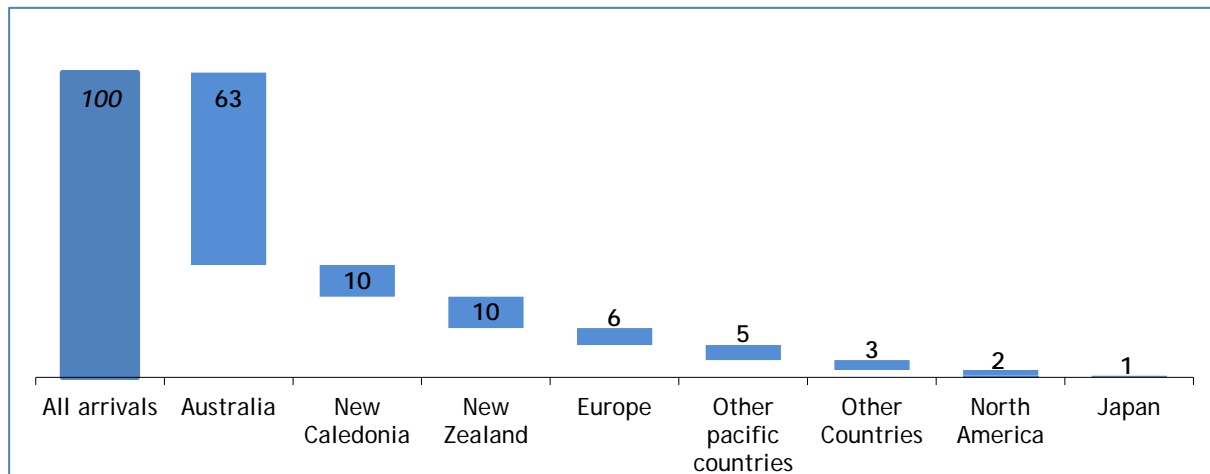
- International visitor arrivals by air increased in March 2013 over the corresponding month of 2012 and also over the previous month.
- March figures showed an increase of 10% for visitor arrivals by air over the corresponding month of 2012, rising from 6,343 to 6,977 visitors. Figures also showed a significant increase of 41% over the previous month in 2013. This increase was due to the rise in air visitor arrivals for holiday.
- Cruise ship arrivals declined by 5% over the same month in 2012. This slight decline was due to a drop of one cruise ship visit in March 2013 from 10 cruise ship visits in the corresponding month of 2012. However cruise ship arrivals continue to make up the largest proportion of international visitors accounting for 70% of total visitors in March 2013.

PURPOSE OF VISIT FOR VISITORS ARRIVING BY AIR

- In March, records showed that 80% of visitor arrivals were for holiday, 9% for both visitors who arrived for business, meetings, conferences and those who visited their friends and relatives, 2% for other purposes, education and sports and 1% to stop over.

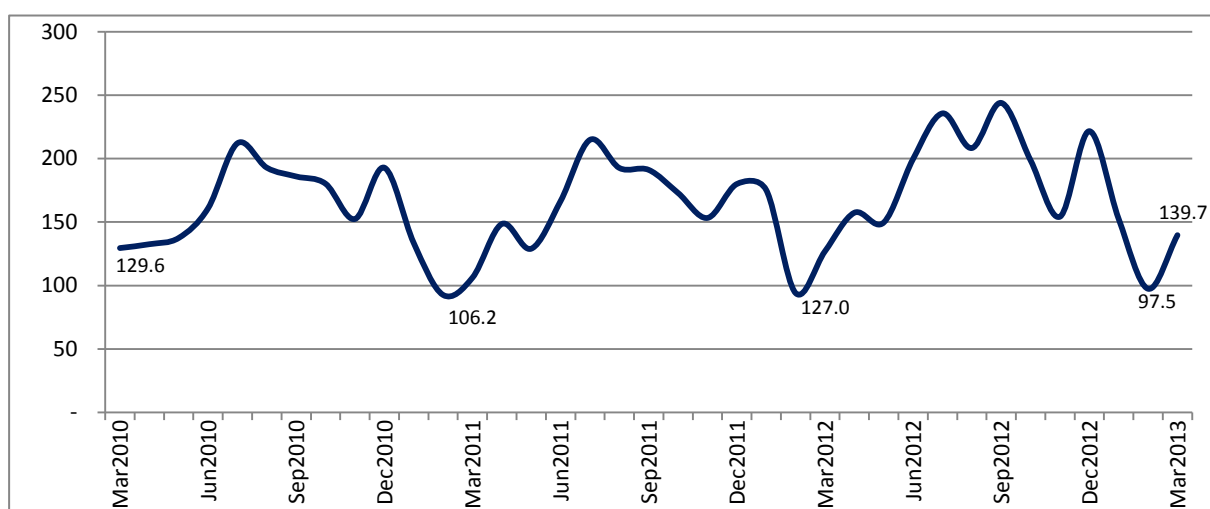
COUNTRY OF USUAL RESIDENCE FOR VISITORS ARRIVING BY AIR

Figure 2: Share of visitors by Country of Usual Residence, percentage of visitors in March 2013



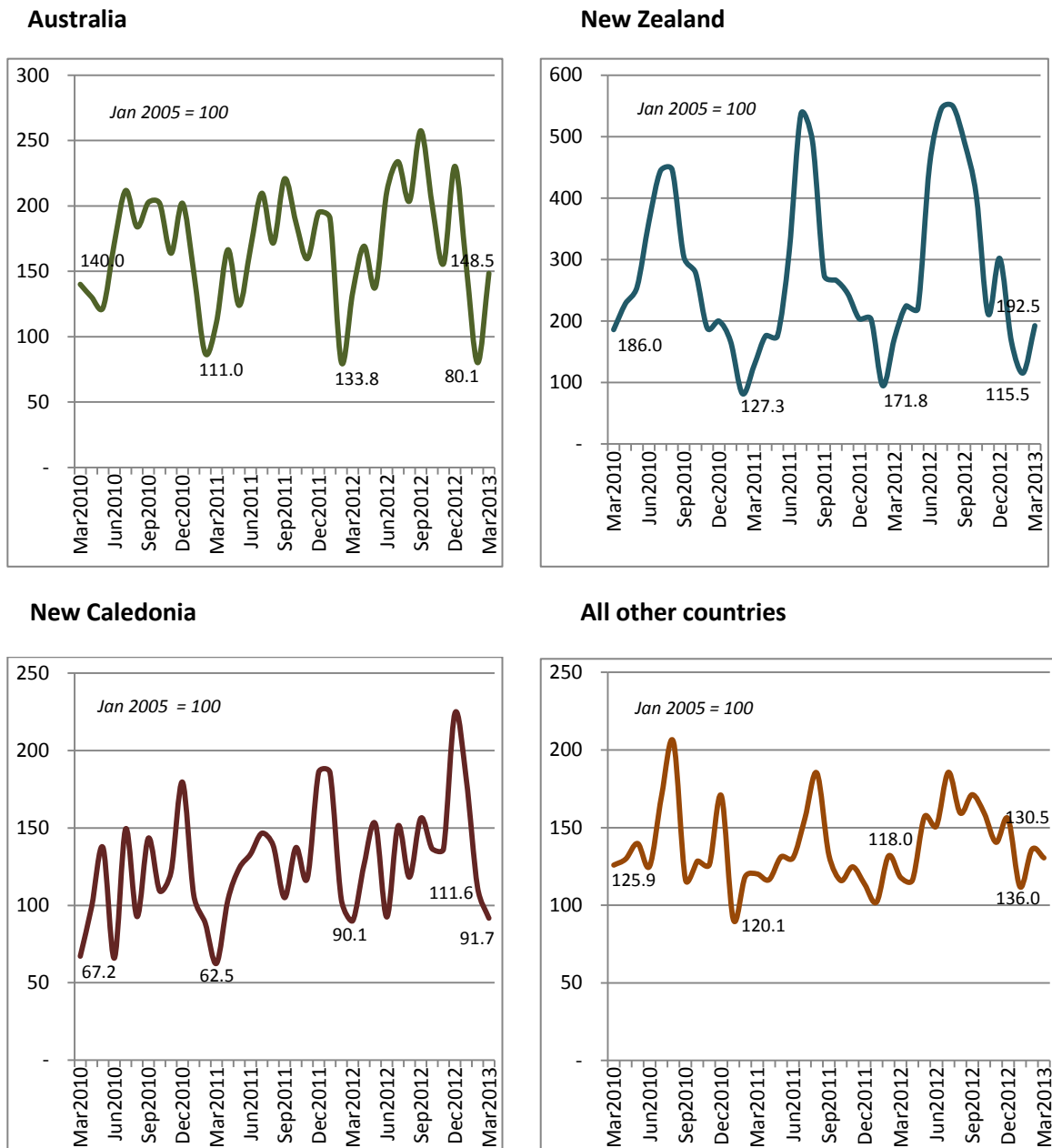
- Australia continues to be the number one source of visitor arrivals to Vanuatu, accounting for 63% of visitors, followed by New Caledonia and New Zealand at 10% each, Europe at 6%, other pacific countries at 5%, other countries at 3%, North America at 2% and Japan at 1% (Figure 2).
- Tourism in Vanuatu is seasonal, and it is difficult to analyse changes in international arrivals and country of residence by looking at the monthly number of arrivals. Figure 3 below, shows the total number of visitor arrivals and arrivals from Australia, New Zealand, New Caledonia and all other countries combined to show trends in arrivals, with the number of visitors based on an index value of 100 in January 2005. This index allows analysis over time of the real increases and decreases in international air arrivals.

Figure 3: Index of Total Visitor Arrivals, March 2010 to March 2013 (January 2005 = 100)



- Figure 3 shows the trend of an increase in visitor arrivals to Vanuatu, with the 'high season' which typically occurs between July and September each year. The index shows the overall trend for increasing visitor arrivals in March 2013 compared with March 2012 with a 10% increase in index value.

Figure 4: Index of Visitor Arrivals and Country of Usual Residence, March 2010 to March 2013 (January 2005 = 100)



Note: the vertical axis scale varies in each country chart.

- The index values for the three major tourism markets of New Zealand, Australia and New Caledonia showed higher numbers of visitors in March 2013 increasing at 12%, 11% and 2% respectively, compared to the corresponding month of the previous year.

AVERAGE LENGTH OF STAY FOR VISITORS ARRIVING BY AIR

- The figures in March 2013 showed that the average intended length of stay for visitors remained unchanged at 10 days over the corresponding month of 2012. However, figures in March 2013 declined by 1.9 days from 12.5 days to 10.6 days over the previous month of February 2013.

AVERAGE AGE OF VISITORS ARRIVING BY AIR

- In March 2013, figures showed a decline in visitors' average age, dropping slightly by 1.2 years from 40.5 years to 39.2 years over March 2013. Visitors' average age remained unchanged when compared to the previous month of February 2013.

CONCEPTS AND DEFINITIONS

Visitors are non-resident persons spending at least one night in Vanuatu.

Residents are persons who declare themselves to be residents or an intending resident on immigration arrival cards.

ATTACHED:

Table 1 Summary of Overseas Migration

Table 2 Visitor Arrivals by Purpose of Visit

Table 3 Visitor Arrivals by Country of Usual Residence

Table 4 Overseas Arrivals of Residents by Nationality

Table 5 Visitors Arriving by Air Intended Length of Stay

Table 6 Visitors Arriving by Air Average Age

NEXT UPDATE

April 2013

RELEASE DATE

14th June, 2013

MORE INFORMATION

For statistical enquiries about this topic, please contact:

National Statistics Office: (678) 22110/22111 – email: stats@vanuatu.gov.vu

PROVINCIAL STATISTICS OFFICES

Torba Province: (678) 5522320

Sanma Province: (678) 36542/5522316

Penama Province: (678) 5522318

Malampa Province: (678) 5522317

Tafea Province: (678) 5522319



Simil Johnson
Government Statistician

Table 1 : Summary of Overseas Migration
Tableau 1 : Résumé des échanges migratoires avec l'extérieur

Year	Month	ARRIVALS / ARRIVEES						DEPARTURES / DEPARTURES						Cruiseship Arrivals/ Croisiéristes	Année	Mois
		PORT VILA		LUGANVILLE		TOTAL		PORT VILA		LUGANVILLE		TOTAL				
		Residents	Visitors	Residents	Visitors	Residents	Visitors	Resident	Visitor	Resident	Visitors	Resident	Visitors			
		Résidents	Visiteurs	Résidents	Visiteurs	Résidents	Visiteurs	Résidents	Visiteurs	Résidents	Visiteurs	Résidents	Visiteurs			
2009	Mar	1,228	6,444	34	113	1,262	6,557	1,600	6,667	65	102	1,665	6,769	10,421	2009	Mar
2010	Mar	1,197	6,454	28	16	1,225	6,470	1,167	6,824	5	6	1,172	6,830	12,784	2010	Mar
2011	Jan	1,780	6,536	51	136	1,831	6,672	728	7,673	25	271	753	7,944	18,376	2011	Jan
	Feb	1,307	4,567	39	58	1,346	4,625	936	2,922	5	66	941	2,988	14,976		Fév
	Mar	1,384	5,210	22	93	1,406	5,303	1,203	5,211	-	-	1,203	5,211	7,613		Mar
	Apr	1,635	7,183	44	236	1,679	7,419	899	7,722	12	141	911	7,863	15,725		Apr
	May	1,781	6,247	43	197	1,824	6,444	1,097	7,364	12	210	1,109	7,574	17,031		Mai
	Jun	1,818	8,053	38	265	1,856	8,318	778	7,903	3	54	781	7,957	18,363		Juin
	Jul	1,828	10,419	38	310	1,866	10,729	994	11,297	30	277	1,024	11,574	11,411		Juil
	Aug	1,797	9,255	42	367	1,839	9,622	1,201	9,700	16	203	1,217	9,903	7,511		Aoû
	Sep	2,341	9,203	52	343	2,393	9,546	914	9,894	19	205	933	10,099	13,066		Sep
	Oct	1,760	8,354	55	283	1,815	8,637	1,377	10,398	13	237	1,390	10,635	7,210		Oct
	Nov	1,885	7,353	51	302	1,936	7,655	1,412	8,617	7	186	1,419	8,803	11,268		Nov
	Dec	2,436	8,727	46	263	2,482	8,990	1,419	8,135	14	104	1,433	8,239	12,388		Déc
2012	Jan	2,380	8,591	42	164	2,422	8,755	1,297	10,852	27	310	1,324	11,162	27,137	2012	Jan
	Feb	1,202	4,642	22	58	1,224	4,700	1,771	5,178	7	55	1,778	5,233	21,382		Fév
	Mar	1,515	6,152	32	191	1,547	6,343	1,143	6,449	3	111	1,146	6,560	16,851		Mar
	Apr	1,793	7,637	49	223	1,842	7,860	998	8,888	4	204	1,002	9,092	15,177		Avr
	May	2,098	7,401	8	73	2,106	7,474	1,135	7,156	-	-	1,135	7,156	17,684		Mai
	Jun	1,746	9,808	8	168	1,754	9,976	1,000	9,072	-	27	1,000	9,099	12,972		Juin
	Jul	1,869	11,471	21	299	1,890	11,770	995	12,740	14	337	1,009	13,077	18,595		Juil
	Aug	1,448	10,154	31	251	1,479	10,405	975	10,726	10	215	985	10,941	9,581		Aug
	Sep	2,288	11,887	24	295	2,312	12,182	1,013	12,192	15	251	1,028	12,443	15,104		Sep
	Oct	1,717	9,663	29	259	1,746	9,922	1,535	11,688	11	282	1,546	11,970	26,644		Oct
	Nov	2,118	7,431	49	273	2,167	7,704	1,593	8,852	15	230	1,608	9,082	16,697		Nov
	Dec	2,420	10,774	49	296	2,469	11,070	1,348	9,365	28	317	1,376	9,682	17,188		Dec
2013	Jan	1,997	7,415	64	197	2,061	7,612	1,331	11,574	23	325	1,354	11,899	33,491	2013	Jan
	Feb	1,333	4,809	21	122	1,354	4,931	1,919	5,497	7	55	1,926	5,552	16,127		Fév
	Mar	1,656	6,825	40	152	1,696	6,977	526	1,025	2	155	528	1,180	16,060		Mar

Source: Immigration Department/Service de l'Immigration

- Nil or less than half final unit shown / Résultat nul ou inférieur au demi de l'unité indiquée

r Revised / Données rectifiées

Table 2 : Visitor Arrivals by Purpose of Visit
Tableau 2 : Arrivées de visiteurs selon le motif du voyage

Year	Month	VISITORS/VISITEURS						Total Visitors	Année	Mois
		Holidays	Visiting Friends and relatives	Business, Meetings/ Conferences	Stop Over	Others, Education, sports				
		Vacances	Visite à des amis et à la famille	Affaires, réunions ou conférence	Escale	Autres, education, sport	Visiteurs global			
2009	Mar	5,250	421	755	49	81	6,557	2009	Mar	
2010	Mar	5,217	397	790	64	2	6,470	2010	Mar	
2011	Jan	5,670	529	389	78	6	6,672	2011	Jan	
	Feb	3,390	400	751	84	-	4,625		Fév	
	Mar	4,006	432	829	36	-	5,303		Mar	
	Apr	6,082	527	742	68	-	7,419		Avr	
	May	4,786	553	1,002	100	3	6,444		Mai	
	Jun	6,627	643	942	85	21	8,318		Juin	
	Jul	8,799	914	912	87	17	10,729		Juil	
	Aug	7,749	628	1,153	66	26	9,622		Aoû	
	Sep	8,076	578	820	60	12	9,546		Sep	
	Oct	6,991	642	953	51	-	8,637		Oct	
	Nov	6,228	468	907	52	-	7,655		Nov	
	Dec	7,417	1,006	533	23	11	8,990		Déc	
2012	Jan	7,280	986	457	23	9	8,755	2012	Jan	
	Feb	3,390	387	833	30	60	4,700		Fév	
	Mar	4,991	455	846	42	9	6,343		Mar	
	Apr	6,596	546	674	29	15	7,860		Avr	
	May	5,928	513	984	34	15	7,474		Mai	
	Jun	7,946	601	1,254	171	4	9,976		Juin	
	Jul	9,877	863	992	32	6	11,770		Juil	
	Aug	8,776	638	929	55	7	10,405		Aoû	
	Sep	10,089	640	1,350	58	45	12,182		Sep	
	Oct	8,071	586	1,192	43	30	9,922		Oct	
	Nov	6,152	491	980	59	22	7,704		Nov	
	Dec	8,989	1,204	803	26	48	11,070		Dec	
2013	Jan	6,315	596	638	63	-	7,612	2013	Jan	
	Feb	3,431 <i>r</i>	437 <i>r</i>	856 <i>r</i>	16 <i>r</i>	191 <i>r</i>	4,931 <i>r</i>		Fév	
	Mar	5,557	594	645	57	124	6,977		Mar	

Source: Immigration Department/Service de l'Immigration

- Nil or less than half final unit shown / résultat nul ou inférieur au demi de l'unité indiquée

r Revised / Données rectifiées

Table 3 : Visitor Arrivals by Usual Country of Residence
Tableau 3 : Arrivées des visiteurs par pays de résidence habituelle

Year	Month	Australia	New Zealand	New Caledonia	Other Pacific Countries	Europe	North America	Japan	Other Countries	TOTAL	Année	Mois
		Australie	Nouvelle-Zélande	Nouvelle-Calédonie	Autres Pays du Pacifique		Amérique du Nord	Japon	Autres pays			
2009	Mar	4,647	649	362	234	340	138	64	122	6,557	2009	Mar
2010	Mar	4,155	694	527	340	317	195	43	198	6,470	2010	Mar
2011	Jan	4,425	621	836	179	329	116	35	131	6,672	2011	Jan
	Feb	2,593	306	697	345	361	102	50	171	4,625		Fév
	Mar	3,293	475	491	363	316	132	54	179	5,303		Mar
	Apr	4,939	657	811	278	390	170	39	135	7,419		Avr
	May	3,676	655	973	336	405	192	41	166	6,444		Mai
	Jun	4,977	1,162	1,045	223	467	248	43	153	8,318		Juin
	Jul	6,222	2,000	1,151	320	540	214	75	207	10,729		Juil
	Aug	5,090	1,835	1,088	313	760	198	91	247	9,622		Aoû
	Sep	6,549	1,022	824	206	501	206	49	189	9,546		Sep
	Oct	5,558	994	1,078	219	432	116	46	194	8,637		Oct
	Nov	4,736	913	922	282	424	119	55	204	7,655		Nov
	Dec	5,785	759	1,460	333	340	109	52	152	8,990		Déc
2012	Jan	5,653	757	1,458	247	341	105	49	145	8,755	2012	Jan
	Feb	2,387	354	814	403	367	130	59	186	4,700		Fév
	Mar	3,970	641	707	277	332	131	52	233	6,343		Mar
	Apr	5,021	838	991	270	335	133	58	214	7,860		Avr
	May	4,091	821	1,198	454	410	219	59	222	7,474		Mai
	Jun	6,248	1,690	726	310	523	203	52	224	9,976		Juin
	Jul	6,937	2,032	1,188	433	633	216	95	236	11,770		Juil
	Aug	6,043	2,049	928	298	646	181	58	202	10,405		Aoû
	Sep	7,640	1,827	1,227	451	462	231	59	285	12,182		Sep
	Oct	5,960	1,505	1,072	334	576	216	41	218	9,922		Oct
	Nov	4,622	790	1,071	293	505	156	55	212	7,704		Nov
	Dec	6,833	1,126	1,758	543	361	173	68	208	11,070		Dec
2013	Jan	4,591	621	1,428	231	364	135	32	210	7,612	2013	Jan
	Feb	2,448 <i>r</i>	429 <i>r</i>	876 <i>r</i>	440 <i>r</i>	340 <i>r</i>	154 <i>r</i>	26 <i>r</i>	218 <i>r</i>	4,931 <i>r</i>		Fév
	Mar	4,405	718	720	344	388	135	36	231	6,977		Mar

Source: Immigration Department / Service de l'Immigration

r Revised / Données rectifiées

Table 4 : Overseas Arrivals of Residents by Nationality

Tableau 4 : Arrivées des résidents par nationalité

Year	Month	Ni-Vanuatu	Australian Australien	French Français	British Anglais	New Zealander Néo- Zélandais	Asian Asiatiques	Pacific Islanders Autres pays du Pacifique	North Americans Américain du Nord	Other countries Autres pays	TOTAL	Année	Mois
2009	Mar	589	316	113	15	104	40	42	24	20	1,262	2009	Mar
2010	Mar	623	225	136	6	113	37	34	35	16	1,225	2010	Mar
2011	Jan	772	406	250	27	143	54	113	27	39	1,831	2011	Jan
	Feb	538	271	104	20	102	60	203	26	22	1,346		Fév
	Mar	681	299	152	15	108	57	55	20	19	1,406		Mar
	Apr	942	304	140	21	123	51	45	27	26	1,679		Avr
	May	1,097	302	124	16	109	48	73	26	29	1,824		Mai
	Jun	1,188	279	133	19	102	58	30	30	17	1,856		Juin
	Jul	894	340	168	22	113	81	182	28	38	1,866		Juil
	Aug	1,030	327	144	12	130	58	87	28	23	1,839		Août
	Sep	1,662	300	119	17	94	51	78	30	42	2,393		Sep
	Oct	846	402	179	29	159	65	56	58	21	1,815		Oct
	Nov	1,199	322	126	29	87	67	52	26	28	1,936		Nov
	Dec	1,659	315	163	17	100	69	116	26	17	2,482		Déc
2012	Jan	1,617	306	159	17	107	59	115	26	16	2,422	2012	Jan
	Feb	619	232	76	15	119	46	67	29	21	1,224		Fév
	Mar	783	307	147	24	109	70	52	23	32	1,547		Mar
	Apr	1,112	327	102	15	110	76	41	37	22	1,842		Avr
	May	1,348	330	164	10	107	60	43	27	17	2,106		Mai
	June	1,139	255	97	21	91	69	46	18	18	1,754		Juin
	Jul	1,155	288	185	21	94	44	50	37	16	1,890		Juil
	Aug	814	282	105	18	90	51	47	41	31	1,479		Août
	Sep	1,650	283	98	11	109	57	44	30	30	2,312		Sep
	Oct	948	378	137	15	86	62	61	24	35	1,746		Oct
	Nov	1,442	304	146	18	99	36	56	35	31	2,167		Nov
	Dec	1,690	337	110	18	115	66	64	43	26	2,469		Déc
2013	Jan	983	391	236	18	158	73	116	51	35	2,061	2013	Jan
	Feb	688 <i>r</i>	270 <i>r</i>	93 <i>r</i>	12 <i>r</i>	84 <i>r</i>	62 <i>r</i>	87 <i>r</i>	26 <i>r</i>	32 <i>r</i>	1,354 <i>r</i>		Fév
	Mar	915	322	124	16	120	74	63	33	29	1,696		Mar

Source: Immigration Department / Service de l'Immigration

n.a. : Not Available/Non disponible

r : Revised / chiffre révisé

Table 5 : Visitors Arriving by Air Intended Length of Stay

Tableau 5 : Arrivée des Visiteurs à longue durée de Séjour

Year	Month	AVERAGE INTENDED LENGTH OF STAY / LA MOYENNE DE LONGUE DUREE DE SEJOUR			Année	Mois
		Port Vila	Luganville	Vanuatu		
2010	Mar	9.6	8.8	9.2	2010	Mar
2011	Jan	8.6	9.4	9.0	2011	Jan
	Feb	8.4	11.4	9.9		Fév
	Mar	8.8	8.3	8.6		Mar
	Apr	8.2	13.8	11.0		Apr
	May	9.1	10.4	9.8		Mai
	Jun	8.6	12.6	10.6		Juin
	Jul	9.0	10.4	9.7		Juil
	Aug	9.0	10.8	9.9		Aoû
	Sep	8.7	9.6	9.2		Sep
	Oct	8.0	9.0	8.5		Oct
	Nov	8.1	11.0	9.6		Nov
	Dec	12.0	13.5	12.8		Dec
2012	Jan	10.3	11.1	10.7	2012	Jan
	Feb	9.3	10.7	10.0		Fév
	Mar	9.7	11.2	10.5		Mar
	Apr	9.7	10.8	10.2		Apr
	May	9.8	12.6	11.2		Mai
	Jun	9.5	11.7	10.6		Juin
	Jul	11.4	11.5	11.5		Juil
	Aug	10.4	10.5	10.5		Aoû
	Sep	9.5	11.0	10.3		Sep
	Oct	10.4	10.5	10.5		Oct
	Nov	8.9	9.0	9.0		Nov
	Dec	8.9	12.7	10.8		Dec
2013	Jan	11.6	11.2	11.4	2013	Jan
	Feb	15.6 <i>r</i>	9.4 <i>r</i>	12.5 <i>r</i>		Fév
	Mar	10.1	11.2	10.6		Mar

Source: Immigration Department/Service de l'Immigration

Table 6 : Visitors Arriving by Air Average Age
Tableau 6 : Arrivée des Visiteurs par Age moyen

Year	Month	AVERAGE AGE OF VISITORS / L'AGE MOYEN DES VISITEURS			Année	Mois
		Port Vila	Luganville	Vanuatu		
2010	Mar	40.0	27.3	33.6	2010	Mar
2011	Jan	32.9	38.4	35.7	2011	Jan
	Feb	35.4	43.5	39.4		Fév
	Mar	41.0	45.3	43.2		Mar
	Apr	37.0	21.9	29.5		Apr
	May	40.9	47.2	44.1		Mai
	Jun	39.8	39.4	39.6		Juin
	Jul	38.3	41.5	39.9		Juil
	Aug	41.4	36.7	39.0		Août
	Sep	38.6	43.1	40.9		Sep
	Oct	39.2	40.7	39.9		Oct
	Nov	38.7	36.8	37.7		Nov
	Dec	44.8	37.0	40.9		Déc
2012	Jan	34.0	36.5	35.2	2012	Jan
	Feb	38.7	45.9	42.3		Fév
	Mar	38.0	42.9	40.5		Mar
	Apr	38.0	42.9	40.5		Avr
	May	39.7	53.3	46.5		Mai
	Jun	37.9	29.7	33.8		Juin
	Jul	38.4	41.0	39.7		Juil
	Aug	41.5	46.5	44.0		Aug
	Sep	36.5	38.3	37.4		Sep
	Oct	41.5	46.5	44.0		Oct
	Nov	36.6	41.6	39.1		Nov
	Dec	36.6	36.9	36.8		Déc
2013	Jan	35.4	44.2	39.8	2013	Jan
	Feb	32.0 <i>r</i>	46.4 <i>r</i>	39.2 <i>r</i>		Fév
	Mar	37.0	41.5	39.2		Mar

Source: Immigration Department/Service de l'Immigration

r Revised / Données rectifiées