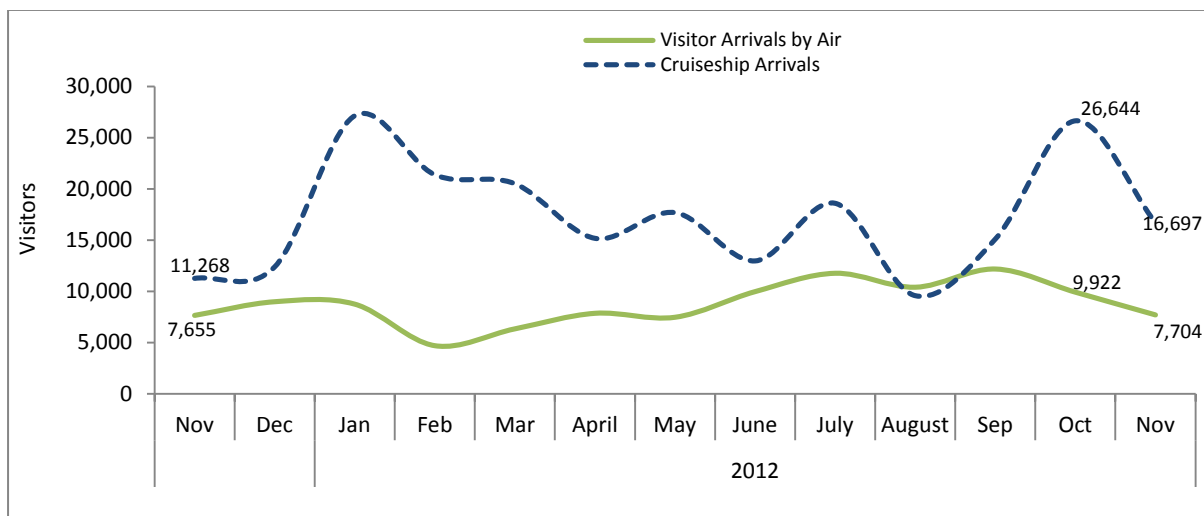


STATISTICS UPDATE: INTERNATIONAL MIGRATION



NOVEMBER 2013 HIGHLIGHTS

Figure 1: Air and Day visitors: November 2011 to November 2012



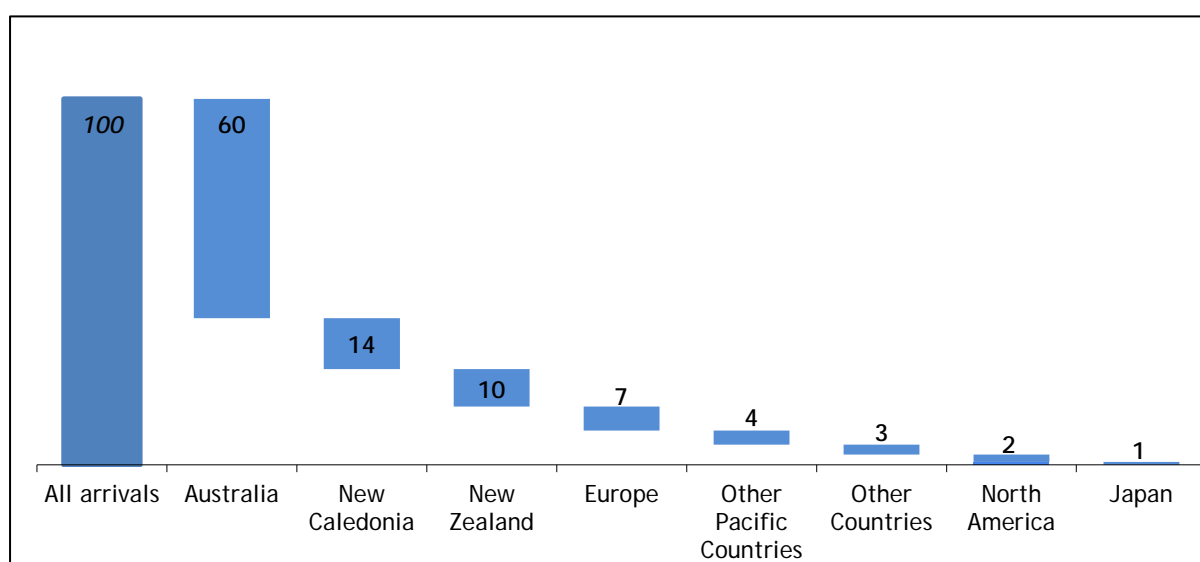
- Visitor arrivals by air increased slightly by 1% over the corresponding month of 2011 rising from 7,655 to 7,704 visitors. This was due to an increase of 9% for all visitors arriving for non-holiday purposes, that is, business, meetings and conferences; visiting friends and families; stop over and for other purposes passengers.
- There was an increase in day visitors (cruise ship) for the month of November 2012 compared to the same month in 2011. This increase was mainly due to a rise in the number of cruise ship visits from 6 in 2011 to 8 in 2012. Each of these visiting cruise ships carried an average of 2,087 passengers compared to an average of 1,878 passengers in November 2011.
- Cruise ship visitors make up the largest proportion of visitor arrivals, accounting for 68% of total visitors.

PURPOSE OF VISIT

- According to the total international visitor arrivals in November 2012, almost 80% or 4 in every 5 visitors stated their purpose of visit being for holiday; 13% for business, meetings or conferences etc.; and 6% to visit friends and families.

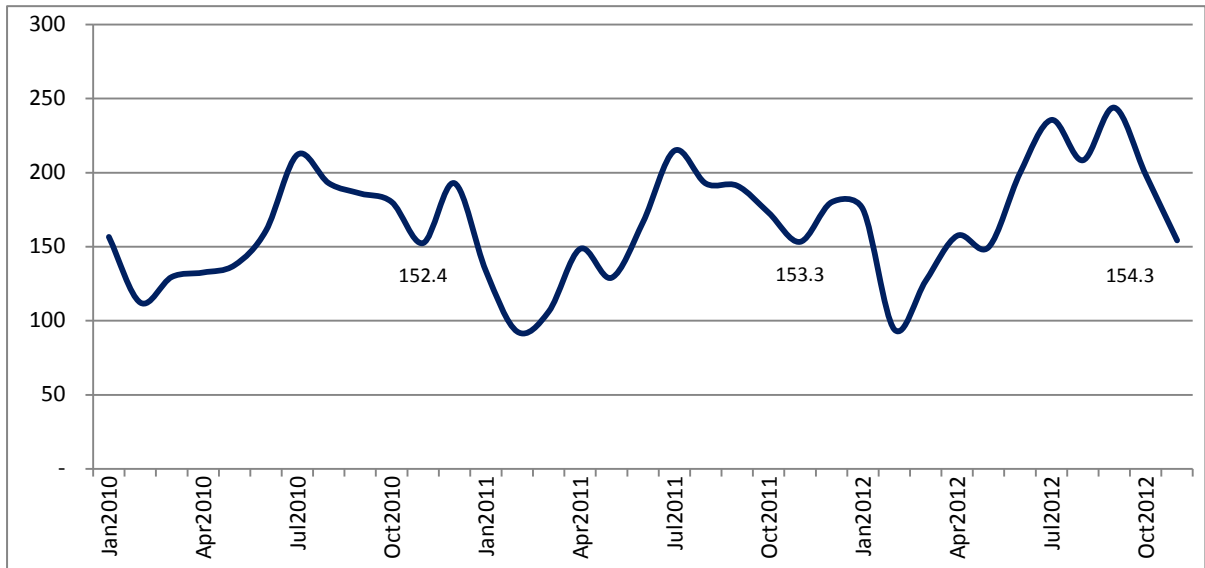
COUNTRY OF USUAL RESIDENCE FOR VISITORS ARRIVING BY AIR

Figure 2: Share of visitors by Country of Usual Residence to total visitors in November 2012



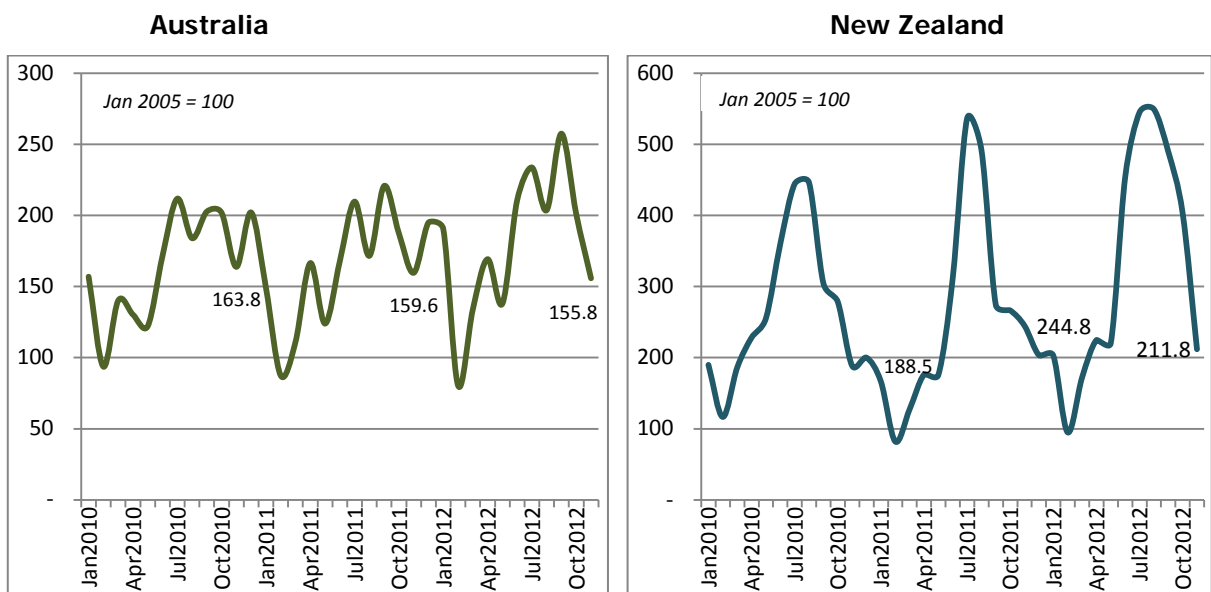
- Visitors from Australia continue to be the largest group of international visitors arriving by air, making up 60% of all arrivals in November 2012. Visitors who usually live in New Caledonia represented 14% of November 2012 arrivals, followed by New Zealand (10%); Europe (7%); other Pacific countries (4%); all other countries (3%); North America (2%) and Japan at 1% (See Table 3).
- Tourism in Vanuatu is seasonal, and it is difficult to analyse changes in international arrivals and country of residence by looking at the monthly number of arrivals. Figure 3 below shows the total number of visitor arrivals and arrivals from Australia, New Zealand, New Caledonia and all other countries combined to show trends in arrivals, with the number of visitors based on an index value of 100 in January 2005. This index allows analysis over time of the real increases and decreases in international air arrivals.

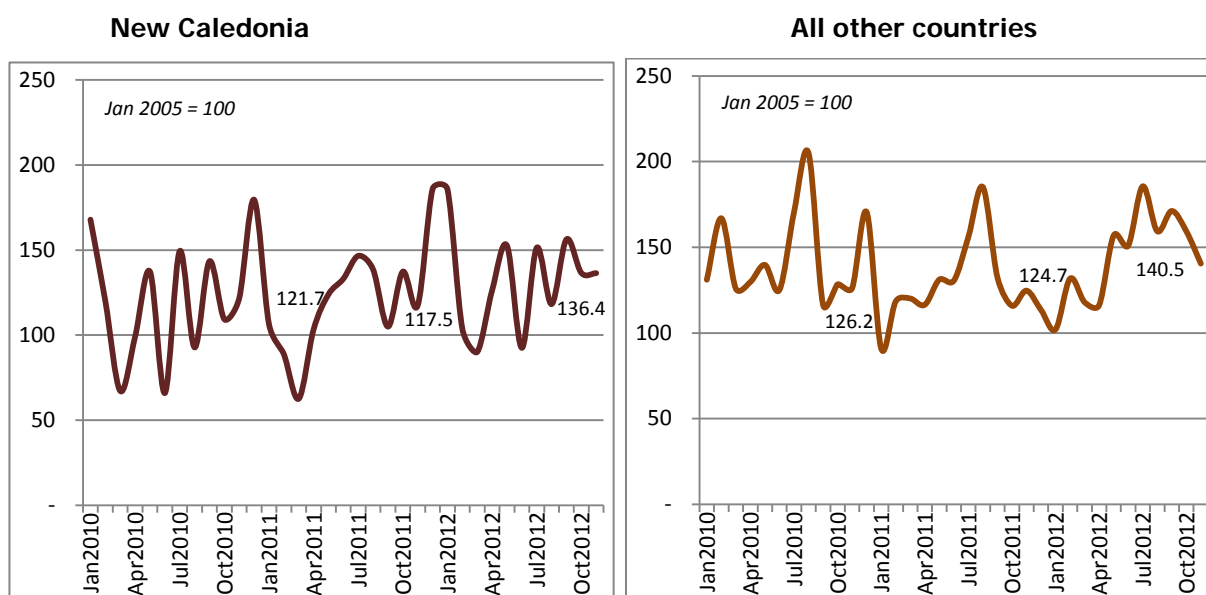
Figure 3: Index of Total Visitor Arrivals, January 2010 – November 2012 (January 2005 = 100)



- Figure 3 shows the trend of an increase in visitor arrivals to Vanuatu, with the 'high season' where typically occurs between July and September each year. The index shows the overall trend for increasing visitor arrivals, and a rise in the number of visitors in November 2012 compared with November 2011 with a 1% increase in the index value.
- Figure 3 also shows the slow down in visitor arrivals which started in October 2012 and continued in November 2012.

Figure 4: Index of Visitor Arrivals and Country of Usual Residence, January 2010 – November 2012 (January 2005 = 100)





Note: the vertical axis scale varies in each country chart.

- The index values for the major tourism markets of Australia and New Zealand show lower numbers of visitors in November 2012 compared to same month last year, decreasing by 2% and 13% respectively over the 12 months November 2011 to 2012. Visitor arrivals from New Caledonia and all other countries combined shows an increasing trend with a 16% and 13% increase in the index values of November 2012 and November 2011.

AVERAGE LENGTH OF STAY

- The record showed a slight decrease in average length of stay (intended) for visitors at 9.0 days in November 2012 when compared to November 2011 at 9.6, and a decrease over the previous month at 1.5 average intended length of stay.

AVERAGE AGE OF VISITOR

- In November 2012, figures registered a slight increase of 1.4 years in average age for visitors when compared to the corresponding month of 2011, and an increase in average age of visitors at 39.1 years over October 2012.

CONCEPTS AND DEFINITIONS

Visitors are non-resident persons spending at least one night in Vanuatu.

Residents are persons who declare themselves to be residents or an intending resident on immigration arrival cards.

ATTACHED:

Table 1 Summary of Overseas Migration

Table 2 Visitor Arrivals by Purpose of Visit

Table 3 Visitor Arrivals by Country of Usual Residence

Table 4 Overseas Arrivals of Residents by Nationality

NEXT UPDATE

December 2012

RELEASE DATE

30th January, 2013

MORE INFORMATION

For statistical enquiries about this topic, please contact:

National Statistics Office: (678) 22110/22111 – email: stats@vanuatu.gov.vu

NATIONAL STATISTICS OFFICES IN THE PROVINCES

Torba Province: (678) 5522320

Sanma Province: (678) 36542/5522316

Penama Province: (678) 5522318

Malampa Province: (678) 5522317

Tafea Province: (678) 5522319



Simil Johnson
Government Statistician

Table 1 : Summary of Overseas Migration
Tableau 1 : Résumé des échanges migratoires avec l'extérieur

Year	Month	ARRIVALS / ARRIVEES						DEPARTURES / DEPARTURES						Cruiseship Arrivals/ Croisiéristes	Année	Mois
		PORT VILA		LUGANVILLE		TOTAL		PORT VILA		LUGANVILLE		TOTAL				
		Residents	Visitors	Residents	Visitors	Residents	Visitors	Resident	Visitor	Resident	Visitors	Resident	Visitors			
		Résidents	Visiteurs	Résidents	Visiteurs	Résidents	Visiteurs	Résidents	Visiteurs	Résidents	Visiteurs	Résidents	Visiteurs			
2009	Nov	1,554	7,525	53	214	1,607	7,739	263	1,376	27	199	290	1,575	5,735	2009	Nov
2010	Nov	1,814	7,411	59	202	1,873	7,613	1,465	8,606	4	99	1,469	8,705	13,281	2010	Nov
2011	Jan	1,780	6,536	51	136	1,831	6,672	728	7,673	25	271	753	7,944	18,376	2011	Jan
	Feb	1,307	4,567	39	58	1,346	4,625	936	2,922	5	66	941	2,988	14,976		Fév
	Mar	1,384	5,210	22	93	1,406	5,303	1,203	5,211	-	-	1,203	5,211	7,613		Mar
	Apr	1,635	7,183	44	236	1,679	7,419	899	7,722	12	141	911	7,863	15,725		Apr
	May	1,781	6,247	43	197	1,824	6,444	1,097	7,364	12	210	1,109	7,574	17,031		Mai
	Jun	1,818	8,053	38	265	1,856	8,318	778	7,903	3	54	781	7,957	18,363		Juin
	Jul	1,828	10,419	38	310	1,866	10,729	994	11,297	30	277	1,024	11,574	11,411		Juil
	Aug	1,797	9,255	42	367	1,839	9,622	1,201	9,700	16	203	1,217	9,903	7,511		Aoû
	Sep	2,341	9,203	52	343	2,393	9,546	914	9,894	19	205	933	10,099	13,066		Sep
	Oct	1,760	8,354	55	283	1,815	8,637	1,377	10,398	13	237	1,390	10,635	7,210		Oct
	Nov	1,885	7,353	51	302	1,936	7,655	1,412	8,617	7	186	1,419	8,803	11,268		Nov
	Dec	2,436	8,727	46	263	2,482	8,990	1,419	8,135	14	104	1,433	8,239	12,388		Déc
2012	Jan	2,380	8,591	42	164	2,422	8,755	1,297	10,852	27	310	1,324	11,162	27,137	2012	Jan
	Feb	1,202	4,642	22	58	1,224	4,700	1,771	5,178	7	55	1,778	5,233	21,382		Fév
	Mar	1,515	6,152	32	191	1,547	6,343	1,143	6,449	3	111	1,146	6,560	20,506		Mar
	Apr	1,793	7,637	49	223	1,842	7,860	998	8,888	4	204	1,002	9,092	15,177		Avr
	May	2,098	7,401	8	73	2,106	7,474	1,135	7,156	-	-	1,135	7,156	17,684		Mai
	Jun	1,746	9,808	8	168	1,754	9,976	1,000	9,072	-	27	1,000	9,099	12,972		Juin
	Jul	1,868	11,468	21	299	1,889	11,767	995	12,740	14	337	1,009	13,077	18,595		Juil
	Aug	1,448	10,154	31	251	1,479	10,405	975	10,726	10	215	985	10,941	9,581		Aug
	Sep	2,288	11,887	24	295	2,312	12,182	1,013	12,192	15	251	1,028	12,443	15,104		Sep
	Oct	1,717	9,663	29	259	1,746	9,922	1,535	11,688	11	282	1,546	11,970	26,644		Oct
	Nov	2,118	7,431	49	273	2,167	7,704	1,593	8,852	15	230	1,608	9,082	16,697		Nov

Source: Immigration Department/Service de l'Immigration

- Nil or less than half final unit shown / Résultat nul ou inférieur au demi de l'unité indiquée

r Revised / Données rectifiées

Table 2 : Visitor Arrivals by Purpose of Visit
Tableau 2 : Arrivées de visiteurs selon le motif du voyage

Year	Month	VISITORS/VISITEURS						Année	Mois
		Holidays Vacances	Visiting Friends and Relatives Visite à des amis et à la famille	Business, Meeting/Conf. Affaires, réunions ou conférence	Stop Over Escale	Others Purposes Autres motifs	Total Visitors Visiteurs global		
2009	Nov	6,744	231	723	40	-	7,739	2009	Nov
2010	Nov	7,051	193	321	31	17	7,613	2010	Nov
2011	Jan	5,670	529	389	78	6	6,672	2011	Jan
	Feb	3,390	400	751	84	-	4,625		Fév
	Mar	4,006	432	829	36	-	5,303		Mar
	Apr	6,082	527	742	68	-	7,419		Avr
	May	4,786	553	1,002	100	3	6,444		Mai
	Jun	6,627	643	942	85	21	8,318		Juin
	Jul	8,799	914	912	87	17	10,729		Juil
	Aug	7,749	628	1,153	66	26	9,622		Aoû
	Sep	8,076	578	820	60	12	9,546		Sep
	Oct	6,991	642	953	51	-	8,637		Oct
	Nov	6,228	468	907	52	-	7,655		Nov
	Dec	7,417	1,006	533	23	11	8,990		Déc
2012	Jan	7,280	986	457	23	9	8,755	2012	Jan
	Feb	3,390	387	833	30	60	4,700		Fév
	Mar	4,991	455	846	42	9	6,343		Mar
	Apr	6,596	546	674	29	15	7,860		Avr
	May	5,928	513	984	34	15	7,474		Mai
	Jun	7,946	601	1,254	171	4	9,976		Juin
	Jul	9,875	863	991	32	6	11,767		Juil
	Aug	8,776	638	929	55	7	10,405		Aoû
	Sep	10,089	640	1,350	58	45	12,182		Sep
	Oct	8,071	586	1,192	43	30	9,922		Oct
	Nov	6,152	491	980	59	22	7,704		Nov

Source: Immigration Department/Service de l'Immigration

- Nil or less than half final unit shown / résultat nul ou inférieur au demi de l'unité indiquée

Table 3 : Visitor Arrivals by Usual Country of Residence
Tableau 3 : Arrivées des visiteurs par pays de résidence habituelle

Year	Month	Australia	New Zealand	New Caledonia	Other Pacific Countries	Europe	North America	Japan	Other Countries	TOTAL	Année	Mois
		Australie	Nouvelle-Zélande	Nouvelle-Calédonie	Autres Pays du Pacifique		Amérique du Nord	Japon	Autres pays			
2009	Nov	4,963	828	831	255	418	228	29	187	7,739	2009	Nov
2010	Nov	4,859	703	955	242	406	192	55	201	7,613	2010	Nov
2011	Jan	4,425	621	836	179	329	116	35	131	6,672	2011	Jan
	Feb	2,593	306	697	345	361	102	50	171	4,625		Fév
	Mar	3,293	475	491	363	316	132	54	179	5,303		Mar
	Apr	4,939	657	811	278	390	170	39	135	7,419		Avr
	May	3,676	655	973	336	405	192	41	166	6,444		Mai
	Jun	4,977	1,162	1,045	223	467	248	43	153	8,318		Juin
	Jul	6,222	2,000	1,151	320	540	214	75	207	10,729		Juil
	Aug	5,090	1,835	1,088	313	760	198	91	247	9,622		Aoû
	Sep	6,549	1,022	824	206	501	206	49	189	9,546		Sep
	Oct	5,558	994	1,078	219	432	116	46	194	8,637		Oct
	Nov	4,736	913	922	282	424	119	55	204	7,655		Nov
	Dec	5,785	759	1,460	333	340	109	52	152	8,990		Déc
2012	Jan	5,653	757	1,458	247	341	105	49	145	8,755	2012	Jan
	Feb	2,387	354	814	403	367	130	59	186	4,700		Fév
	Mar	3,970	641	707	277	332	131	52	233	6,343		Mar
	Apr	5,021	838	991	270	335	133	58	214	7,860		Avr
	May	4,091	821	1,198	454	410	219	59	222	7,474		Mai
	Jun	6,248	1,690	726	310	523	203	52	224	9,976		Juin
	Jul	6,934	2,032	1,188	433	633	216	95	236	11,767		Juil
	Aug	6,043	2,049	928	298	646	181	58	202	10,405		Aoû
	Sep	7,640	1,827	1,227	451	462	231	59	285	12,182		Sep
	Oct	5,960	1,505	1,072	334	576	216	41	218	9,922		Oct
	Nov	4,622	790	1,071	293	505	156	55	212	7,704		Nov

Source: Immigration Department / Service de l'Immigration

Table 4 : Overseas Arrivals of Residents by Nationality

Tableau 4 : Arrivées des résidents par nationalité

Year	Month	Ni-Vanuatu	Australian Australien	French Français	British Anglais	New Zealander Néo- Zélandais	Asian Asiatiques	Pacific Islanders Autres pays du Pacifique	North Americans Américain du Nord	Other countries Autres pays	TOTAL	Année	Mois
2009	Nov	1,036	234	138	2	82	27	29	41	19	1,607	2009	Nov
2010	Nov	1,152	350	127	10	106	25	42	32	29	1,873	2010	Nov
2011	Jan	772	406	250	27	143	54	113	27	39	1,831	2011	Jan
	Feb	538	271	104	20	102	60	203	26	22	1,346		Fév
	Mar	681	299	152	15	108	57	55	20	19	1,406		Mar
	Apr	942	304	140	21	123	51	45	27	26	1,679		Avr
	May	1,097	302	124	16	109	48	73	26	29	1,824		Mai
	Jun	1,188	279	133	19	102	58	30	30	17	1,856		Juin
	Jul	894	340	168	22	113	81	182	28	38	1,866		Juil
	Aug	1,030	327	144	12	130	58	87	28	23	1,839		Aoû
	Sep	1,662	300	119	17	94	51	78	30	42	2,393		Sep
	Oct	846	402	179	29	159	65	56	58	21	1,815		Oct
	Nov	1,199	322	126	29	87	67	52	26	28	1,936		Nov
	Dec	1,659	315	163	17	100	69	116	26	17	2,482		Déc
2012	Jan	1,617	306	159	17	107	59	115	26	16	2,422	2012	Jan
	Feb	619	232	76	15	119	46	67	29	21	1,224		Fév
	Mar	783	307	147	24	109	70	52	23	32	1,547		Mar
	Apr	1,112	327	102	15	110	76	41	37	22	1,842		Avr
	May	1,348	330	164	10	107	60	43	27	17	2,106		Mai
	June	1,139	255	97	21	91	69	46	18	18	1,754		Juin
	Jul	1,154	288	185	21	94	44	50	37	16	1,889		Juil
	Aug	814	282	105	18	90	51	47	41	31	1,479		Aoû
	Sep	1,650	283	98	11	109	57	44	30	30	2,312		Sep
	Oct	948	378	137	15	86	62	61	24	35	1,746		Oct
	Nov	1,442	304	146	18	99	36	56	35	31	2,167		Nov

Source: Immigration Department / Service de l'Immigration

n.a. : Not Available/Non disponible

r : Revised / chiffre révisé

Table 5 : Visitors Arrival Intended Length of Stay
Tableau 5 : Arrivée des Visiteurs à longue durée de Séjour

Year	Month	AVERAGE INTENDED LENGTH OF STAY (LOS)			RATING		Année	Mois
		Port Vila	Luganville	Total Average Days		Main purpose of stay		
2009	Nov	8.5	9.4	9.0		Holiday	2009	Nov
2010	Nov	7.8	9.4	8.6		Holiday	2010	Nov
2011	Jan	8.6	9.4	9.0		Holiday	2011	Jan
	Feb	8.4	11.4	9.9		Holiday		Fév
	Mar	8.8	8.3	8.6		Holiday		Mar
	Apr	8.2	13.8	11.0		Holiday		Apr
	May	9.1	10.4	9.8		Holiday		Mai
	Jun	8.6	12.6	10.6		Holiday		Juin
	Jul	9.0	10.4	9.7		Holiday		Juil
	Aug	9.0	10.8	9.9		Holiday		Aoû
	Sep	8.7	9.6	9.2		Holiday		Sep
	Oct	8.0	9.0	8.5		Holiday		Oct
	Nov	8.1	11.0	9.6		Holiday		Nov
	Dec	12.0	13.5	12.8		Holiday		Déc
2012	Jan	10.3	11.1	10.7		Holiday	2012	Jan
	Feb	9.3	10.7	10.0		Holiday		Fév
	Mar	9.7	11.2	10.5		Holiday		Mar
	Apr	9.7	10.8	10.2		Holiday		Apr
	May	9.8	12.6	11.2		Holiday		Mai
	Jun	9.5	11.7	10.6		Holiday		Juin
	Jul	11.4	11.5	11.5		Holiday		Juil
	Aug	10.4	10.5	10.5		Holiday		Aoû
	Sep	9.5	11.0	10.3		Holiday		Sep
	Oct	10.4	10.5	10.5		Holiday		Oct
	Nov	8.9	9.0	9.0		Holiday		Nov

Source: Immigration Department/Service de l'Immigration

Table 6 : Visitors Arrival Average Age
Tableau 6 : Arrivée des Visiteurs par Age moyen

Year	Month	AVERAGE AGE OF VISITORS			RATING	Année	Mois
		Port Vila	Luganville	Vanuatu			
2009	Nov	37.1	41.8	39.5		2009	Nov
2010	Nov	38.6	41.8	40.2		2010	Nov
2011	Jan	32.9	38.4	35.7		2011	Jan
	Feb	35.4	43.5	39.4			Fév
	Mar	41.0	45.3	43.2			Mar
	Apr	37.0	21.9	29.5			Apr
	May	40.9	47.2	44.1			Mai
	Jun	39.8	39.4	39.6			Juin
	Jul	38.3	41.5	39.9			Juil
	Aug	41.4	36.7	39.0			Août
	Sep	38.6	43.1	40.9			Sep
	Oct	39.2	40.7	39.9			Oct
	Nov	38.7	36.8	37.7			Nov
	Dec	44.8	37.0	40.9			2012
2012	Jan	34.0	36.5	35.2		2012	Jan
	Feb	38.7	45.9	42.3			Fév
	Mar	38.0	42.9	40.5			Mar
	Apr	38.0	42.9	40.5			Avr
	May	39.7	53.3	46.5			Mai
	Jun	37.9	29.7	33.8			Juin
	Jul	38.4	41.0	39.7			Juil
	Aug	41.5	46.5	44.0			Aug
	Sep	36.5	38.3	37.4			Sep
	Oct	41.5	46.5	44.0			Oct
	Nov	36.6	41.6	39.1			Nov

Source: Immigration Department/Service de l'Immigration