

Consumer Price Index, September Quarter 2010

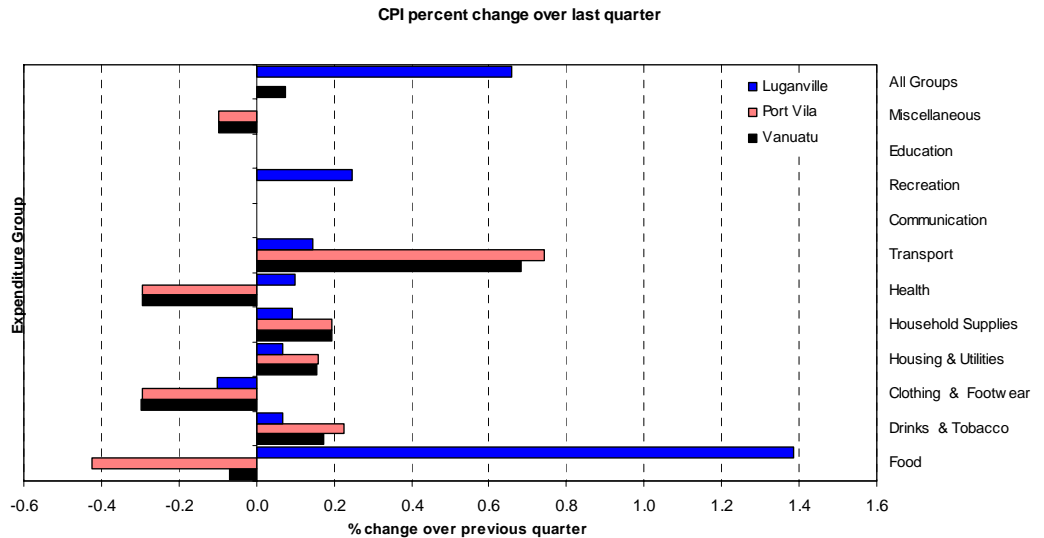
Quarterly Inflation

The Consumer Price Index (CPI) for September quarter of 2010 recorded a slight price increase of 0.1 percent over the June quarter of 2010. Luganville index slightly increased by 0.7 percent whereas Port Vila remained stable as compared to the same period.

The slight increase in the prices for Transport (0.7%), Alcoholic Drinks and Tobacco (0.2%), Housing and Utilities (0.2%); and Household Supplies (0.2%)

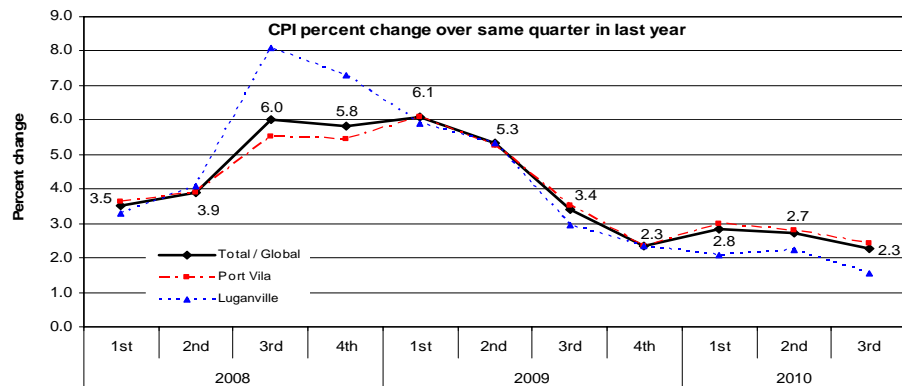
contributed to the slight increase in September quarter of 2010. In both urban centres, the price increases in Transport, Alcoholic drinks and tobacco, Housing Utilities, and Household Supplies were attributable to the rises in airfares for both domestic and international, the prices of imported beer, the electricity charges and the small hardware tools.

However, the indices for the expenditure groups such as Health, Clothing and footwear, Food and Miscellaneous declined respectively by 0.3%, 0.3%, 0.1% and 0.1% over the June quarter of 2010. These decreases were due to the price fall in seasonal fruits and vegetables, men's wear, private optical fees, rice and toiletries. In Luganville, the meals and takeaways contributed to the increase in food expenditure group.



Annual inflation

When the CPI for the September quarter 2010 is compared with the same quarter of 2009, the index for Vanuatu increased by 2.3 percent: 2.4 percent in Port Vila and 1.5 percent in Luganville.



Underlying inflation

'Underlying inflation' is a measure derived from the CPI excluding items which typically have unstable or volatile prices; because of things like seasonal variation or policy decisions.

Underlying inflation increased by 0.2 percent in September quarter of 2010 compared to the previous quarter. On the other hand, it recorded a decrease of 1.2 percent in the June quarter of 2010.

The “September on September” annual rate of underlying inflation showed a decrease of 1.6 percent in September quarter of 2010 when compared with the corresponding period of last year.

Concepts and definitions

The Consumers Price Index (CPI) is used to measure the changes in the prices of goods and services purchased by households in Port Vila and Luganville over a period of time.

This change in prices is sometimes called inflation. Retail stores, supermarkets, liquor outlets, doctors' surgeries, travel agents, service stations and other providers of goods and services help supply the Vanuatu National Statistics Office with the information to calculate the CPI.

Where possible, prices are collected for exactly the same goods and services each time. This ensures that changes in the cost of goods and services over time are not due to changes in the quantity or quality of the goods and services purchased.

Attached:

Table 1 Consumer Price Index: All Items

Table 2 Consumer Price Index: Expenditure Groups

Forthcoming issues:

<u>Issue (Quarter)</u>	<u>Release Date</u>
December 2010	11 February 2011

More information ...

For statistical enquiries about this topic, please contact Vanuatu National Statistics Office or your nearest Provincial Statistics Offices:

Lakatoro, Malekula, Malampa Province

Lenakel, Tanna, Tafea Province

Luganville, Santo, Sanma Province

Saratamata, Ambae, Penama Province

Sola, Vanualava, Torba Province



Simil Johnson
Government Statistician



Tableau 1 Indice des prix à la consommation
Base: 1^{er} Trimestre 2000 = 100

Year	Quarter	Consumer Price Indices			<i>Underlying Inflation Index Inflation sous-jacente</i>	Rate of Change (%)			Rate of Change (%)			Année	Trimestre
		Indice des prix à la consommation				Variation par rapport			Variation				
		Total / Global	Port Vila	Luganville	Total / Global	Port Vila	Luganville	Total / Global	Port Vila	Luganville			
						Over Previous Year / à l'année précédente			4th Quarter over 4th Quarter of previous year / du 4ème trimestre au 4ème trimestre de l'année précédente				
2007		120.8	120.6	122.4	113.3	3.9	3.9	4.5	4.1	4.1	4.7	2007	
2008		126.7	126.1	129.4	119.6	4.8	4.6	5.7	5.8	5.4	7.3	2008	
2009		132.6	131.5	134.7	123.6	4.7	4.3	4.1	2.3	2.3	2.3	2009	
						Over Previous Quarter / au trimestre précédent			Over Same Quarter of previous year / au même trimestre de l'année précédente				
2007	1st	119.4	118.9	122.1	111.4	2.1	1.9	3.7	3.5	3.2	5.0	2007	1er
	2nd	120.9	120.6	122.2	113.7	1.3	1.4	0.1	4.1	4.1	4.1		2ème
	3rd	121.3	121.2	122.1	113.9	0.3	0.5	-0.1	4.0	4.0	4.4		3ème
	4th	121.7	121.5	123.2	114.2	0.3	0.2	0.9	4.1	4.1	4.7		4ème
2008	1st	123.7	123.2	126.1	115.6	1.6	1.4	2.4	3.5	3.6	3.3	2008	1er
	2nd	125.6	125.3	127.3	117.9	1.6	1.7	0.9	3.9	3.9	4.1		2ème
	3rd	128.6	127.9	132.0	122.4	2.4	2.1	3.7	6.0	5.5	8.1		3ème
	4th	128.8	128.1	132.2	122.5	0.2	0.2	0.2	5.8	5.4	7.3		4ème
2009	1st	131.2	130.7	133.5	123.7	1.9	2.0	1.0	6.1	6.1	5.9	2009	1er
	2nd	132.3	131.9	134.1	123.9	0.8	0.9	0.4	5.3	5.3	5.3		2ème
	3rd	133.0	132.4	135.9	124.0	0.5	0.4	1.3	3.4	3.5	3.0		3ème
	4th	131.8	131.1	135.3	122.7	-0.9	-1.0	-0.4	2.3	2.3	2.3		4ème
2010	1st	134.9	134.6	136.3	123.3	2.4	2.7	0.7	2.8	3.0	2.1	2010	1er
	2nd	135.9	135.6	137.1	121.7	0.7	0.7	0.6	2.7	2.8	2.2		2ème
	3rd	136.0	135.6	138.0	122.0	0.1	0.0	0.7	2.3	2.4	1.5		3ème

Table 2 Consumer Price Indices by Expenditure Group

Base: 1st Quarter 2000 = 100

Tableau 2 Indice des prix à la consommation par poste de dépense

Base: 1^{er} Trimestre 2000 = 100

Year	Quarter	Food	Alcoholic drinks and Tobacco	Clothing & Footwear	Housing & Utilities	Household Supplies	Health	Transport	Communication	Recreation	Education	Miscellaneous	All Groups	Année	Trimestre
		Produits alimentaires	Boisson alcoolisée et tabac	Habillement	Loyer, eau, et énergie etc.	Mobilier et équipement ménager etc.	Santé				Loisir		Autres		
Vanuatu														Vanuatu	
2008	4th	130.1	154.4	100.8	127.3	103.4	100.0	136.9	100.0	119.2	100.0	100.0	128.8	2008	4ème
2009	1st	133.3	155.1	101.1	127.7	104.8	100.3	145.4	100.7	119.3	104.8	100.3	131.2	2009	1er
	2nd	135.5	158.0	101.1	127.5	103.9	100.0	142.8	100.7	127.7	105.3	100.9	132.3		2ème
	3rd	136.9	158.2	102.4	127.5	104.3	100.0	143.9	100.7	127.6	105.3	102.9	133.0		3ème
	4th	135.2	158.5	102.7	125.8	104.0	100.7	144.6	96.5	129.0	105.3	103.0	131.8		4ème
2010	1st	140.0	170.2	100.7	128.0	104.2	101.0	146.4	98.7	131.3	100.9	102.3	134.9	2010	1er
	2nd	141.7	172.1	100.7	129.7	103.6	101.4	146.5	98.7	130.1	101.0	102.3	135.9		2ème
	3rd	141.6	172.4	100.4	129.9	103.8	101.1	147.5	98.7	130.1	101.0	102.2	136.0		3ème
Port Vila														Port Vila	
2008	4th	128.3	157.3	102.8	124.5	102.9	100.0	137.6	100.0	118.8	100.0	100.0	128.1	2008	4ème
2009	1st	132.0	158.2	102.9	124.5	104.3	100.0	147.7	100.8	118.8	105.9	100.3	130.7	2009	1er
	2nd	134.3	162.0	102.9	124.3	103.4	100.0	144.9	100.8	128.7	106.5	100.9	131.9		2ème
	3rd	135.2	162.2	104.0	124.2	103.8	100.0	146.0	100.8	128.5	106.5	103.2	132.4		3ème
	4th	133.5	162.4	104.0	122.3	103.4	100.8	146.4	95.8	130.1	106.5	102.9	131.1		4ème
2010	1st	139.5	175.9	101.6	124.4	103.4	101.2	148.1	98.5	132.9	101.9	102.1	134.6	2010	1er
	2nd	141.4	177.5	101.6	126.3	102.7	101.6	148.1	98.5	131.4	102.0	102.1	135.6		2ème
	3rd	140.8	177.9	101.3	126.5	102.9	101.3	149.2	98.5	131.4	102.0	102.0	135.6		3ème
Luganville														Luganville	
2008	4th	138.4	138.8	93.2	141.6	105.9	100.0	133.3	100.0	121.5	100.0	100.0	132.2	2008	4ème
2009	1st	139.7	138.8	94.5	145.4	106.5	102.7	132.9	100.0	122.0	100.8	100.1	133.5	2009	1er
	2nd	141.4	138.8	94.5	145.0	106.1	100.0	132.1	100.0	122.3	100.8	100.4	134.1		2ème
	3rd	145.0	138.8	96.4	145.3	106.5	100.0	132.7	100.0	122.6	100.8	101.0	135.9		3ème
	4th	142.9	139.1	97.9	145.3	106.7	100.0	134.8	100.3	122.6	100.8	103.4	135.3		4ème
2010	1st	143.3	144.7	97.7	148.3	108.3	99.4	137.6	100.3	122.4	97.5	103.8	136.3	2010	1er
	2nd	144.3	147.3	97.6	148.8	108.3	99.4	138.4	100.3	122.3	97.5	103.8	137.1		2ème
	3rd	146.3	147.4	97.5	148.9	108.4	99.5	138.6	100.3	122.6	97.5	103.8	138.0		3ème