



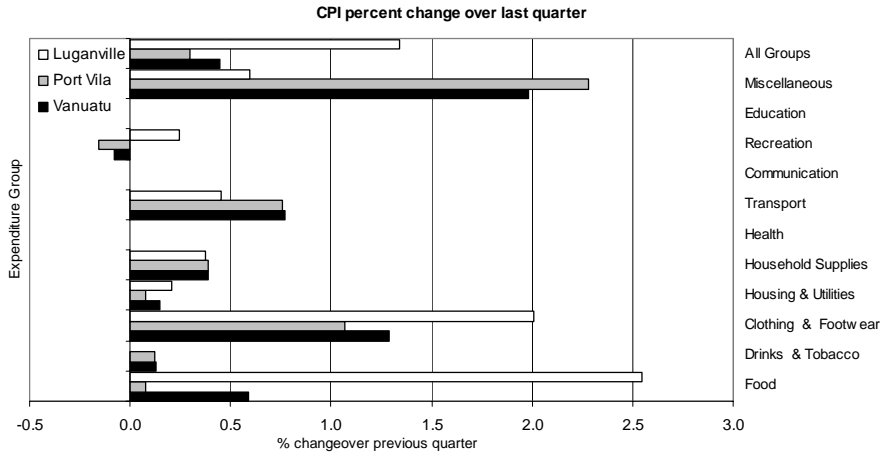
National Population & Housing Census Project
Census Date: 16th November 2009
"Vanuatu Hemi Kaontem Yu"



VNSO Update
Consumer Price Index, September Quarter 2009

Quarterly Inflation

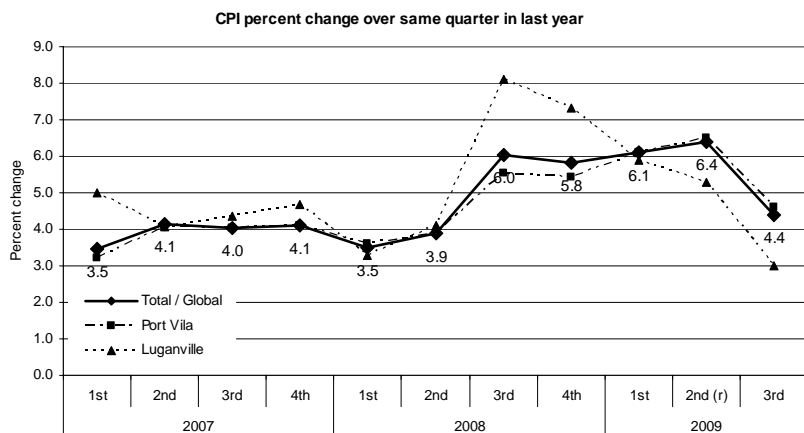
Consumer prices recorded in September quarter slightly increased by 0.4 percent over June quarter 2009. This shows that in the September quarter the inflationary pressure on prices greatly reduced compared to 1.8 percent increase recorded in the June quarter. In September quarter, Port Vila prices increased by 0.2 percent and Luganville 1.3 percent.



The index values for Food in both urban centres increased although Port Vila indicated an increase of only 0.1 percent while Luganville showed a higher increase of 2.5 percent compared to the June quarter. The large increase in Food index in Luganville was largely due to increased prices of fruit and vegetables. Both urban centres also showed increases in the Clothing and Footwear, with Port Vila 1.1 percent and Luganville 2.0 percent in the same period. This was caused by the increase in prices of clothing for men, women and children in both centres. In the Miscellaneous group, Port Vila recorded an increase of 2.3 percent in September quarter. This was largely due to the increased price of personal care products. The indexes of the rest of the item groups increased by less than 1 percent compared to last quarter, although Port Vila indicated a decrease of 0.2 percent in Recreation.

Annual inflation

When the CPI for the September quarter 2009 is compared with the same quarter in 2008, the index for Vanuatu increased by 4.4 percent, 4.6 percent in Port Vila and 3.0 percent in Luganville. The annual increase was driven by increased prices for Food, Clothing and Footwear and Miscellaneous in September 2009 compared with 2008.



Underlying inflation

'Underlying inflation' is a measure derived from the CPI excluding items which typically have unstable or volatile prices; because of things like seasonal variation or policy decisions. Underlying inflation decreased by 0.1 percent in September 2009 compared with the previous quarter which was an increase of 0.1 percent against March; again pointing to a levelling off in price increases.

Concepts and definitions

The Consumers Price Index (CPI) is used to measure the changes in the prices of goods and services purchased by households in Port Vila and Luganville over a period of time.

This change in prices is sometimes called inflation. Retail stores, supermarkets, liquor outlets, doctors' surgeries, travel agents, service stations and other providers of goods and services help supply the Vanuatu National Statistics Office with the information to calculate the CPI.

Where possible, prices are collected for exactly the same goods and services each time. This ensures that changes in the cost of goods and services over time are not due to changes in the quantity or quality of the goods and services purchased.

Attached:

Table 1 Consumer Price Index: All Items

Table 2 Consumer Price Index: Expenditure Groups

More information ...

For statistical enquiries about this topic, please contact:

Economic Statistics Section
Email: asami@vanuatu.gov.vu

Table 1 Consumer Price Index
Base: 1st Quarter 2000 = 100
Tableau 1 Indice des prix à la consommation
Base: 1^{er} Trimestre 2000 = 100

Year	Quarter	Consumer Price Indices			Rate of Change (%)			Rate of Change (%)			Année	Trimestre
		Indice des prix à la consommation			Variation par rapport			Variation				
		Total / Global	Port Vila	Luganville	Total / Global	Port Vila	Luganville	Total / Global	Port Vila	Luganville		
					Over Previous Year / à l'année précédente			4th Quarter over 4th Quarter of previous year / du 4ème trimestre au 4ème trimestre de l'année précédente				
2000		102.0	102.1	101.8	2.5	2.5	3.9	4.1	4.3	4.3	2000	
2001		105.7	105.6	106.4	3.6	3.4	4.5	2.3	2.0	3.8	2001	
2002		107.8	107.9	107.3	2.0	2.2	0.8	2.3	2.4	1.3	2002	
2003		111.0	111.3	109.1	3.0	3.2	1.7	2.9	2.8	2.7	2003	
2004		112.6	112.8	111.7	1.4	1.4	2.4	0.8	0.9	1.6	2004	
2005		113.9	113.7	115.3	1.2	0.8	3.2	1.8	1.3	3.7	2005	
2006		116.3	116.1	117.1	2.0	2.1	1.6	1.9	2.0	1.4	2006	
2007		120.8	120.6	122.4	3.9	3.9	4.5	4.1	4.1	4.7	2007	
2008		126.7	126.1	129.4	4.8	4.6	5.7	5.8	5.4	7.3	2008	
					Over Previous Quarter / au trimestre précédent			Over Same Quarter of previous year / au même trimestre de l'année précédente				
2007	1st	119.4	118.9	122.1	2.1	1.9	3.7	3.5	3.2	5.0	2007	1er
	2nd	120.9	120.6	122.2	1.3	1.4	0.1	4.1	4.1	4.1		2ème
	3rd	121.3	121.2	122.1	0.3	0.5	-0.1	4.0	4.0	4.4		3ème
	4th	121.7	121.5	123.2	0.3	0.2	0.9	4.1	4.1	4.7		4ème
2008	1st	123.7	123.2	126.1	1.6	1.4	2.4	3.5	3.6	3.3	2008	1er
	2nd	125.6	125.3	127.3	1.6	1.7	0.9	3.9	3.9	4.1		2ème
	3rd	128.6	127.9	132.0	2.4	2.1	3.7	6.0	5.5	8.1		3ème
	4th	128.8	128.1	132.2	0.2	0.2	0.2	5.8	5.4	7.3		4ème
2009	1st	131.2	130.7	133.5	1.9	2.0	1.0	6.1	6.1	5.9	2009	1er
	2nd (r)	133.6	133.5	134.1	1.8	2.1	0.4	6.4	6.5	5.3		2ème (r)
	3rd	134.2	133.8	135.9	0.4	0.2	1.3	4.4	4.6	3.0		3ème

(r): Please note that the Consumer Price Index for the second quarter 2009 was revised.

Table 2 Consumer Price Indices by Expenditure Group
Tableau 2 Indice des prix à la consommation par poste de dépense

Base: 1st Quarter 2000 = 100
Base: 1^{er} Trimestre 2000 = 100

Year	Quarter	Food	Drinks & Tobacco	Clothing & Footwear	Housing & Utilities	Household Supplies	Health	Transport	Communication	Recreation	Education	Miscellaneous	All Groups	Année	Trimestre
		Produits alimentaires	Boisson & tabac	Habillement	Loyer, eau, et énergie etc.	Mobilier et équipement ménager etc.	Santé			Loisir		Autres	Indice Global		
Vanuatu															
2008	4th	130.1	154.4	100.8	127.3	103.4	100.0	136.9	100.0	119.2	100.0	100.0	128.8	2008	4ème
2009	1st	133.3	155.1	101.1	127.7	104.8	100.3	145.4	100.7	119.3	104.8	100.3	131.2	2009	1er
	2nd (r)	135.5	158.0	101.1	133.7	103.9	100.0	142.8	100.7	127.7	105.3	100.9	133.6		2ème (r)
	3rd	136.3	158.2	102.4	133.9	104.3	100.0	143.9	100.7	127.6	105.3	102.9	134.2		3ème
Port Vila															
2008	4th	128.3	157.3	102.8	124.5	102.9	100.0	137.6	100.0	118.8	100.0	100.0	128.1	2008	4ème
2009	1st	132.0	158.2	102.9	124.5	104.3	100.0	147.7	100.8	118.8	105.9	100.3	130.7	2009	1er
	2nd (r)	134.3	162.0	102.9	131.3	103.4	100.0	144.9	100.8	128.7	106.5	100.9	133.5		2ème (r)
	3rd	134.4	162.2	104.0	131.4	103.8	100.0	146.0	100.8	128.5	106.5	103.2	133.8		3ème
Luganville															
2008	4th	138.4	138.8	93.2	141.6	105.9	100.0	133.3	100.0	121.5	100.0	100.0	132.2	2008	4ème
2009	1st	139.7	138.8	94.5	145.4	106.5	102.7	132.9	100.0	122.0	100.8	100.1	133.5	2009	1er
	2nd (r)	141.4	138.8	94.5	145.0	106.1	100.0	132.1	99.8	122.3	100.8	100.4	134.1		2ème (r)
	3rd	145.0	138.8	96.4	145.3	106.5	100.0	132.7	99.8	122.6	100.8	101.0	135.9		3ème

(r): Please note that the Consumer Price Index for the second quarter 2009 was revised.