

STATISTICS UPDATE: CONSUMER PRICE INDEX

DECEMBER QUARTER 2018 HIGHLIGHTS

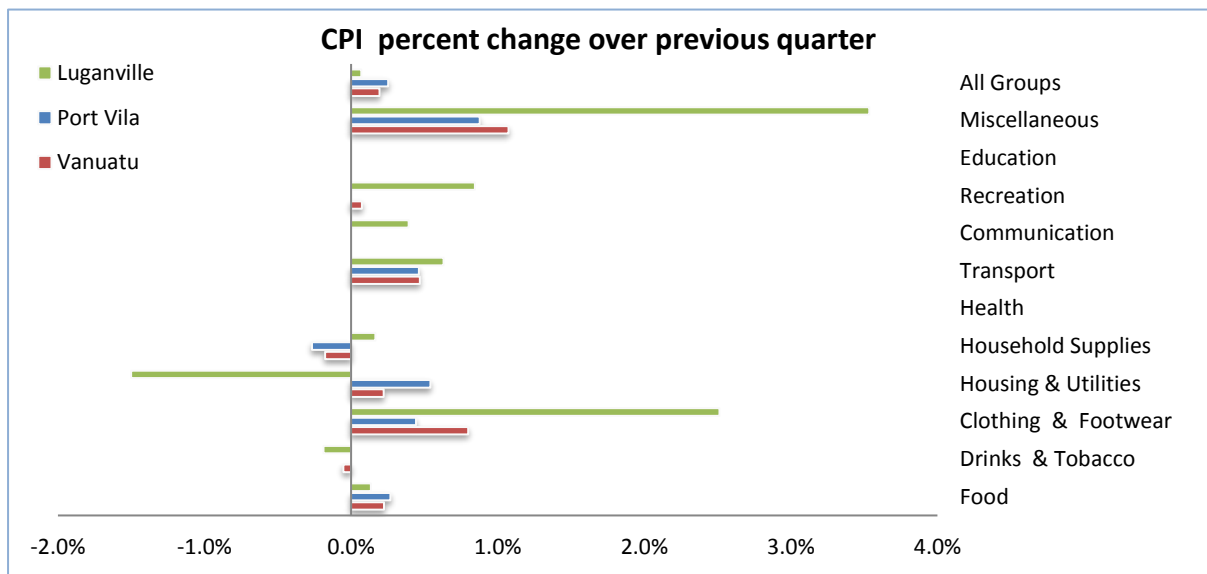


Figure 1: CPI per cent change over previous quarter

CPI QUARTERLY MOVEMENT

The Consumer Price Index (CPI) of December 2018 indicated an increase of (+0.2 %). Port Vila slightly increased by (+0.3%) and Luganville increased by (+0.1%) compared to the previous quarter. The expenditure groups that contributed to the increase in the CPI were: Miscellaneous at (+1.1%), Clothing and Footwear at (+0.8%), Transportation at (+0.5%), Food and Housing Utilities at (+0.2%) respectively and Recreation at (+0.1%). Health, Communication and Education correspondingly remained constant. However, the groups that contributed to the decrease in price movement was Household Supplies at (-0.2%) and Alcoholic drinks and Tobacco at (-0.1%). The main contributor in prices was due to the increase in price movements of purchasing of personal care products, Woman and children's clothing and footwear, automotive fuel (petrol and Diesel) and oil for motor vehicles in both regions.

CPI ANNUAL MOVEMENT

When compared to the December quarter of 2017, the Vanuatu index increased by (+1.9%), Port Vila index increased by (+2.3%) while Luganville index slightly increased by (+0.2%). At national level, the expenditure groups that contributed to the increase over the same quarter of last year were: Recreation at (+5.1%), Housing Supplies at (+4.4%), Food at (+3.1%), Drinks and Tobacco at (+2.8%), Clothing and Footwear and Miscellaneous at (+2.0%) respectively, Health at (+1.9%), Housing and Utilities at (+1.7%) and Transport at (+1.4%). The increase in these expenditure groups were driven by the increase in price movements of sports membership fee, Housing Furniture's, Root crops, Fruits and Vegetables, Wines and Spirits, Woman and men's business shoes, toiletries and other personal care products and Automotive fuel. However, Communication remained constant while School fees showed a negative impact over the same quarter of previous year due to government subsidy.

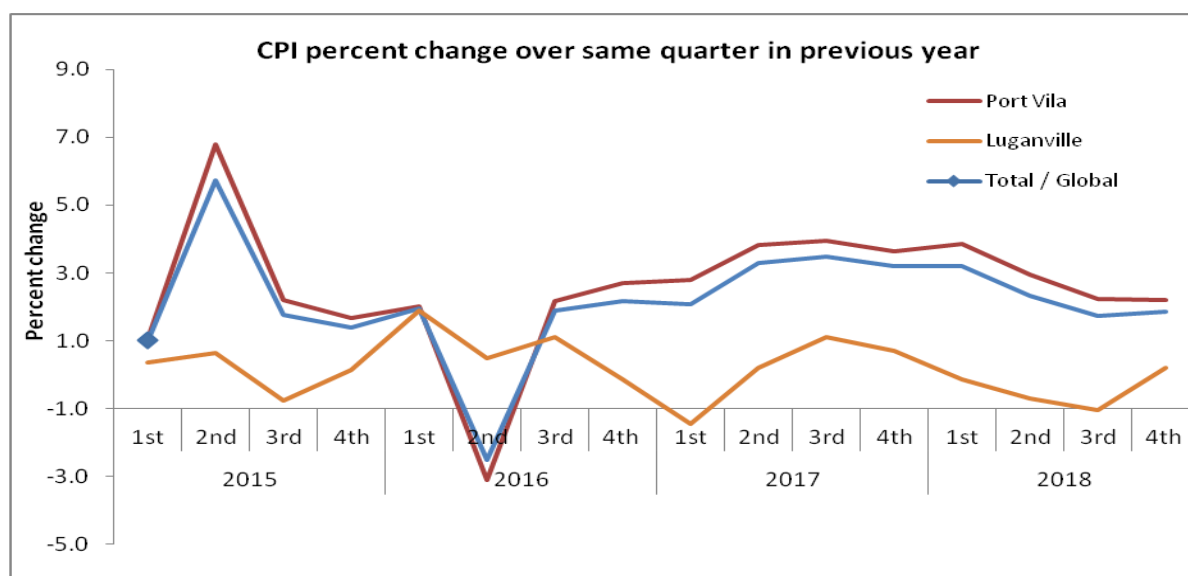


Figure 2: CPI per cent change over same quarter in previous year

UNDERLYING INFLATION

'Underlying inflation' is a measure derived from the CPI excluding items which typically have unstable or volatile prices; because of things like seasonal variation or policy decisions. In December quarter of 2018, underlying inflation increased by (+0.5 %) over the previous quarter, and increased by (+1.7%) over the same quarter of 2017.

CONCEPTS AND DEFINITIONS

The Consumer Price Index (CPI) is used to measure the changes in the prices of goods and services purchased by households in Port Vila and Luganville over a period of time. The separate indices for these two major commercial centres are then combined to create the Vanuatu CPI.

This change in prices is sometimes called inflation. Retail stores, supermarkets, liquor outlets, transport operators, service stations and other providers of goods and services help supply the Vanuatu National Statistics Office with the information to calculate the CPI. Prices are collected for exactly the same goods and services each quarter. This ensures that changes in the cost of goods and services over time are not due to changes in the quantity or quality of the goods and services purchased.

ATTACHMENT

Table 1 Consumer Price Index: All Items

Table 2 Consumer Price Index: Expenditure Groups

NEXT UPDATE (QUARTERLY)

March

RELEASE DATE

03rd of May, 2019

MORE INFORMATION

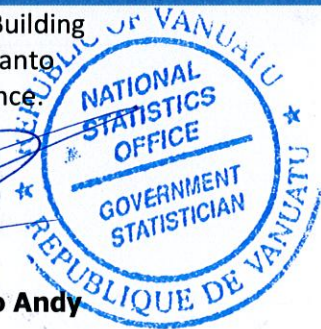

For statistical enquiries about this topic, please contact:

National Statistics Office: (678) 22110/22111/33040, Voip: 1124

Email: stats@vanuatu.gov.vu

NATIONAL STATISTICS OFFICES IN THE PROVINCES

Millennium Building
Luganvillie, Santo
Sanma Province



Mr Kap Calo Andy

Government Statistician

Table 1 Consumer Price Index

Base: 1st Quarter 2000 = 100

Tableau 1 Indice des prix à la consommation

Base: 1^{er} Trimestre 2000 = 100

Consumer Price Indices					Underlying Inflation Index	Rate of Change (%)			Rate of Change (%)				
Year	Quarter	Indice des prix à la consommation			Inflation sous-jacente	Variation par rapport			Variation			Année	Trimestre
		Total / Global	Port Vila	Luganville	Total / Global	Total / Global	Port Vila	Luganville	Total / Global	Port Vila	Luganville		
					Over Previous Year / à l'année précédente			4th Quarter over 4th Quarter of previous year / du 4ème trimestre au 4ème trimestre de l'année précédente					
2013		140.8	140.6	142.1	129.3	1.5	1.4	1.6	1.5	1.4	1.7	2013	
2014		142.0	141.7	143.2	130.7	0.8	0.8	0.8	1.1	1.2	0.5	2014	
2015		145.5	145.9	143.3	131.9	2.5	2.9	0.1	1.4	1.7	0.1	2015	
2016		146.7	147.2	144.5	133.1	0.9	0.9	0.8	2.0	2.0	1.9	2016	
2017		151.2	152.6	144.7	133.3	3.1	3.7	0.1	-2.5	-3.2	0.5	2017	
					Over Previous Quarter / au trimestre précédent			Over Same Quarter of previous year / au même trimestre de l'année précédente					
2014	1st	141.5	141.3	142.7	129.9	0.3	0.4	0.2	0.7	0.7	1.1	2014	1er
	2nd	141.7	141.4	143.3	130.6	0.1	0.1	0.4	0.6	0.6	0.7		2ème
	3rd	142.0	141.7	143.7	130.9	0.2	0.2	0.3	0.8	0.8	0.8		3ème
	4th	142.6	142.5	143.1	131.3	0.4	0.6	-0.4	1.1	1.2	0.5		4ème
2015	1st	142.9	142.8	143.2	130.9	0.2	0.2	0.1	1.0	1.1	0.4	2015	1er
	2nd	149.8	151.0	144.2	132.8	4.8	5.7	0.7	5.7	6.8	0.6		2ème
	3rd	144.5	144.8	142.6	131.4	-3.5	-4.1	-1.1	1.8	2.2	-0.8		3ème
	4th	144.6	144.9	143.3	132.3	0.1	0.1	0.5	1.4	1.7	0.1		4ème
2016	1st	145.7	145.7	145.9	133.3	0.8	0.6	1.8	2.0	2.0	1.9	2016	1er
	2nd	146.0	146.2	144.9	133.4	0.2	0.3	-0.7	-2.5	-3.1	0.5		2ème
	3rd	147.3	148.0	144.2	133.2	0.9	1.2	-0.5	1.9	2.2	1.1		3ème
	4th	147.8	148.9	143.1	132.5	0.3	0.6	-0.8	2.2	2.7	-0.1		4ème
2017	1st	148.8	149.9	143.8	132.3	0.7	0.7	0.5	2.1	2.8	-1.5	2017	1er
	2nd	150.8	152.0	145.2	133.4	1.3	1.4	1.0	3.3	3.8	0.2		2ème
	3rd	152.6	154.1	145.8	133.7	1.2	1.4	0.4	3.5	4.0	1.1		3ème
	4th	152.7	154.5	144.1	133.6	0.1	0.3	-1.2	3.2	3.6	0.7		4ème
2018	1st	153.7	155.9	143.6	134.8	0.7	0.9	-0.3	3.2	3.8	-0.1	2018	1er
	2nd	154.4	156.6	144.2	134.9	0.5	0.4	0.4	2.3	2.9	-0.7		2ème
	3rd	155.3	157.6	144.3	135.2	0.6	0.6	0.1	1.7	2.2	-1.0		3ème
	4th	155.6	158.0	144.4	135.9	0.2	0.3	0.1	1.9	2.2	0.2		4ème

Table 2 Consumer Price Indices by Expenditure Group													Base: 1st Quarter 2000 = 100		
Tableau 2 Indice des prix à la consommation par poste de dépense													Base: 1 ^{er} Trimestre 2000 = 100		
Year	Quarter	Food and Tobacco Produits alimentaires et tabac	Alcoholic drinks and alcoolisée et tabac	Clothing & Footwear Habillement	Housing & Utilities Loyer, eau, et énergie etc.	Household Supplies Mobilier et équipement ménager etc.	Health Santé	Transport	Communication	Recreation Loisir	Education	Miscellaneous Autres	All Groups Indice Global	Année	Trimestre
Vanuatu															
2013	1st	146.9	177.7	103.3	132.8	108.7	101.0	143.8	98.7	140.6	110.1	112.0	140.5	2013	1er
	2nd	147.4	178.3	106.0	133.6	107.1	101.1	143.3	98.7	137.8	110.5	114.3	140.8		2ème
	3rd	147.7	178.5	107.3	133.6	107.2	101.3	143.0	98.3	136.6	110.5	114.8	140.9		3ème
	4th	148.4	179.5	107.2	133.6	107.0	101.3	143.0	98.3	133.4	110.5	114.5	141.1		4ème
2014	1st	149.5	179.5	107.5	133.6	107.1	101.4	143.0	98.3	132.1	111.0	114.7	141.5	2014	1er
	2nd	150.1	180.0	109.3	132.6	107.2	101.7	142.8	98.6	134	111.1	115.3	141.7		2ème
	3rd	150.2	180.4	109.9	133.1	107.3	102.6	143.7	98.7	133.6	111.2	115.3	142.0		3ème
	4th	150.5	180.3	110.3	134.4	106.8	102.5	148.1	98.6	131.0	111.2	115.2	142.6		4ème
2015	1st	149.7	180.3	110.5	135.6	106.6	102.6	150.5	98.6	131.1	115.1	115.2	142.9	2015	1er
	2nd	168.5	180.1	110.4	135	106.2	102.6	150.1	98.6	131.5	115.1	115.2	149.8		2ème
	3rd	152.2	180.8	115.3	135.8	107.6	101.9	153.8	98.6	133.7	115.1	113.6	144.5		3ème
	4th	151.6	181.3	115.9	137.1	107.6	102	157.2	98.6	133.7	115.1	112.7	144.7		4ème
2016	1st	155.1	180.9	114.3	133.2	107.6	101.8	158.3	99	133.7	120.5	112.6	145.7	2016	1st
	2nd	157.3	180.8	111.8	131.7	107.6	101.8	157.6	98.1	133.7	120.5	112.5	146.0		2ème
	3rd	160.9	180.7	111.1	132	107.6	101.8	158.6	98	133.7	120.5	112.6	147.3		3ème
	4th	162.7	180.7	110.9	132.2	108.8	101.8	158.8	94.4	132.2	120.5	111.1	147.8		4ème
2017	1st	164.9	181	110.4	130.9	108	101.9	162.5	94.9	132.7	124.3	110	148.8	2017	1er
	2nd	168.9	181	110.7	132	108.3	102	166.6	94.9	131.3	124.3	110.3	150.8		2ème
	3rd	172.4	181.1	110.5	134	108.3	102	167.5	94.9	130.7	124.3	110.4	152.6		3ème
	4th	173.1	181	111.4	132.5	108.3	102	168.8	94.9	129.5	124.3	110.7	152.7		4ème
2018	1st	174.5	186.1	112	134.1	112.7	103.2	169.7	95.2	135.5	110.5	112.2	153.7	2018	1er
	2nd	176.1	186.3	112.1	134.6	113	103.9	169.8	94.7	135.8	110.5	112	154.4		2ème
	3rd	178.1	186.2	112.7	134.4	113.3	103.9	170.4	94.9	136	110.5	111.7	155.3		3ème
	4th	178.5	186.1	113.6	134.7	113.1	103.9	171.2	94.9	136.1	110.5	112.9	155.6		4ème
Port Vila															
2013	1st	147.3	182.1	104.6	128.5	109.1	101.0	146.2	98.1	143.3	109.4	111.7	140.3	2013	1er
	2nd	147.6	182.4	106.6	129.3	106.4	101.1	146.5	98.2	140.4	109.9	114.3	140.5		2ème
	3rd	147.9	182.5	108.4	129.3	106.5	101.3	146.1	97.7	139.0	109.9	114.6	140.6		3ème
	4th	148.8	183.8	108.4	129.3	106.4	101.3	146.1	97.7	135.3	109.9	114.6	140.8		4ème
2014	1st	150.0	183.8	108.4	129.3	106.4	101.3	146.1	97.7	134.1	110.5	114.8	141.3	2014	1er
	2nd	150.6	184.3	110.6	128.3	106.3	101.6	145.2	98.1	136.3	110.6	115.5	141.4		2ème
	3rd	150.7	185.2	111.4	128.6	106.4	102.5	146.1	98.1	136.0	110.6	115.2	141.7		3ème
	4th	151.4	185.2	111.7	130.0	106.1	102.5	151.4	98.1	133.0	110.6	115.2	142.5		4ème
2015	1st	150.6	185.3	112.0	131.3	105.7	102.6	153.1	98.1	132.8	115.3	115.2	142.8	2015	1er
	2nd	173.6	185.3	112.0	130.6	105.2	102.6	152.5	98.1	133.1	115.3	114.8	151.0		2ème
	3rd	153.8	186.0	118.0	131.8	107.7	101.8	157.0	98.1	135.6	115.3	114.3	144.8		3ème
	4th	152.9	186.4	118.4	132.9	108.0	101.9	160.7	98.1	135.7	115.3	113.8	145.0		4ème
2016	1st	156.3	186.4	115.9	128.6	108.5	101.9	162.1	98.1	133.7	120.8	113.8	145.7	2016	1er
	2nd	159.9	185.9	112.6	126.7	107.9	101.8	161.0	97.1	133.7	120.8	113.7	146.2		2ème
	3rd	164.8	185.9	111.8	126.9	107.3	101.8	161.4	97.1	133.4	120.8	114.0	148.0		3ème
	4th	167.7	185.9	111.6	127.1	107.4	101.8	162.0	93.2	133.4	120.8	112.7	148.9		4ème
2017	1st	170.1	185.8	110.8	125.9	106.3	101.9	165.8	93.8	134.0	125.6	111.5	149.9	2017	1er
	2nd	174.5	185.8	111.0	127.1	106.6	102.0	170.1	93.8	132.6	125.5	112.2	152.0		2ème
	3rd	178.7	186.0	111.0	129.4	106.5	102.0	169.8	93.8	132.6	125.5	112.3	154.1		3ème
	4th	180.6	186.0	111.7	127.6	106.6	102.0	171.3	93.8	131.2	125.5	112.7	154.5		4ème
2018	1st	182.0	191.8	112.3	129.0	111.4	102.9	171.9	94.0	138.5	115.4	114.7	155.9	2018	1er
	2nd	183.6	192.1	112.5	129.4	111.8	103.7	172.1	93.5	138.9	115.4	114.4	156.5		2ème
	3rd	186.2	192.0	113.1	129.2	112.0	103.7	172.7	93.7	139.1	115.4	114.1	157.6		3ème
	4th	186.7	192.0	113.6	129.9	111.7	103.7	173.5	93.7	139.1	115.4	115.1	158.0		4ème
Luganville															
2013	1st	146.5	156.0	98.5	158.4	106.1	101.2	131.0	102.0	125.2	112.4	113.6	141.2	2013	1er
	2nd	147.9	157.5	103.9	158.9	110.5	101.2	126.4	102.0	122.9	112.8	114.8	142.3		2ème
	3rd	148.5	158.1	103.5	158.9	110.6	101.2	126.6	101.8	122.9	112.8	115.9	142.6		3ème
	4th	148.3	158.1	103.1	158.9	110.5	101.2	126.6	101.8	122.9	112.8	113.9	142.4		4ème
2014	1st	148.8	158.1	104.3	158.9	110.9	102.3	126.6	101.8	120.6	112.8	113.9	142.7	2014	1er
	2nd	149.4	158.6	104.3	158.9	112.7	102.3	130.5	101.8	120.6	112.8	113.9	143.3		2ème
	3rd	149.7	157.2	104.6	160.7	112.3	103.4	131.2	101.8	119.9	113.2	115.8	143.7		3ème
	4th	148.7	157.2	105.1	160.5	110.6	102.5	130.9	101.5	119.6	113.3	115.4	143.1		4ème
2015	1st	147.7	156.5	105.1	160.7	112.0	103.2	136.3	101.3	121.5	114.4	115.6	143.2	2015	1er
	2nd	150.0	155.7	104.4	161.0	111.6	102.6	137.5	101.5	122.5	114.4	116.7	144.2		2ème
	3rd	147.4	156.3	105.1	159.0	114.2	102.7	136.6	101.5	128.9	114.4	108.9	142.6		3ème
	4th	148.1	157.3	106.3	161.1	114.6	103.2	138.8	101.5	129.0	114.4	105.9	143.4		4ème
2016	1st	151.8	155.9	108.2	160.5	117.7	101.6	137.8	103.9	126.7	119.2	105.0	145.9	2016	1er
	2nd	148.3	156.9	109.0	162.5	117.7	101.6	139.4	103.9	126.7	119.2	105.0	144.9		2ème
	3rd	146.9	156.4	108.9	163.4	116.8	101.6	139.9	103.2	127.0	119.2	103.4	144.2		3ème
	4th	144.6	156.4	108.8	163.4	116.5	101.6	141.8	101.2	125.4	119.2	101.1	143.1		4ème
2017	1st	145.8	157.8	109.2	161.8	117.6	101.7	145.4	101.2	125.0	119.7	100.1	143.8	2017	1er
	2nd	148.5	157.8	110.0	162.0	118.0	102.1	147.8	101.2	124.2	119.7	98.6	145.2		2ème
	3rd	149.2	157.9	109.4	162.0	118.5	102.6	155.6	102.2	120.0	119.7	98.2	145.8		3ème
	4th	145.3	157.4	110.7	162.8	118.2	102.3	155.6	101.2	120.2	119.7	98.2	144.1		4ème
2018	1st	146.8	160.1	111.1	166.1	119.8	105.3	158.1	102.1	118.6	93.0	96.6	143.6	2018	1er
	2nd	146.1	160.0	111.2	166.2	119.5	105.3	158.2	102.1	118.4	93.0	96.7	144.2		2ème
	3rd	147.9	159.6	111.4	166.7	120.7	105.7	158.5	102.1	118.4	93.0	96.2	144.3		3ème
	4th	148.1	159.3	114.2	164.2	120.9	105.7	159.5	102.5	119.4	9				