

## STATISTICS UPDATE: MERCHANDISE TRADE STATISTICS

### SEPTEMBER 2017 HIGHLIGHTS

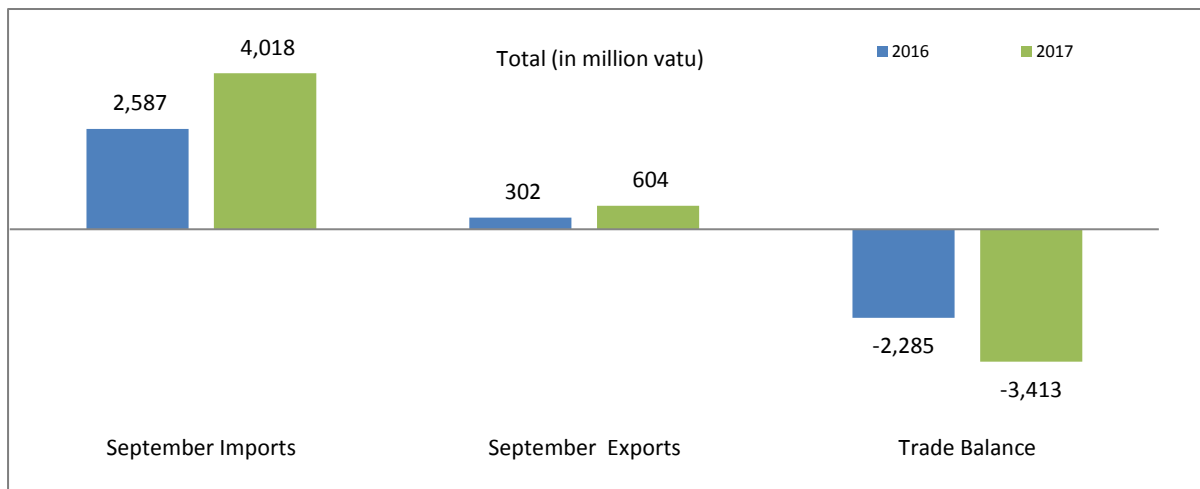


Figure 1: Terms of trade September 2016 and September 2017 (Million Vatu)

Merchandise trade provisional figures for September 2017 recorded a deficit balance of VT3,413 million, a decrease of VT1,128 million or 49% compared to September 2016. This trade deficit balance was due to the value of total imports VT4,018 million, which exceeded that of total exports at VT604 million.

Domestic export earnings (excluding re-exports) for September 2017 stood at VT540 million, an increase of 79% or VT 238 million over September 2016.

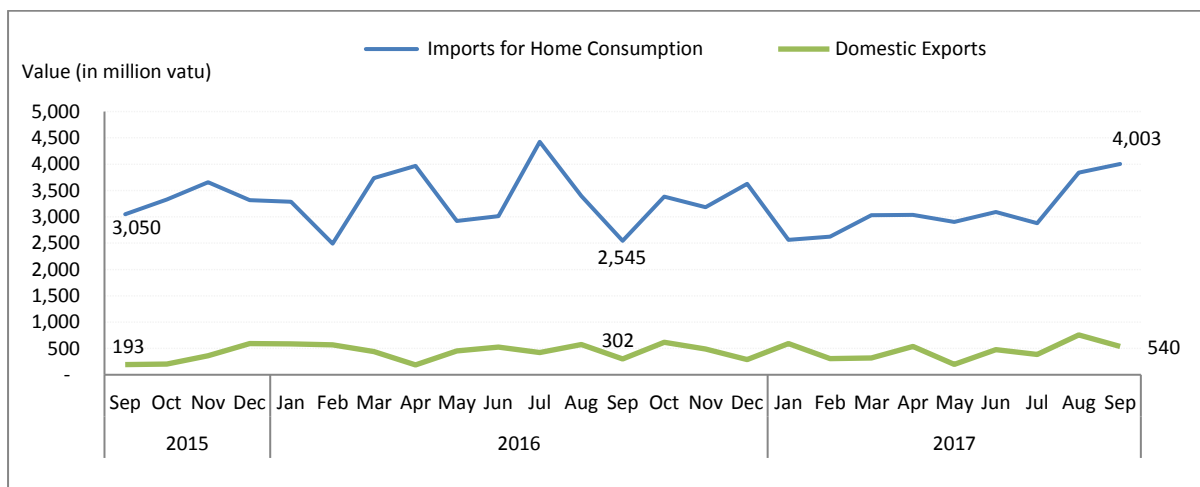


Figure 2: Overseas trade exports and imports for home consumption (million vatu)

**EXPORTS**

In September 2017, for the main export commodities; Copra constituted the largest share in value at VT160 million or 30%, followed by Kava at 20%, Coconut Oil at 15%, Sawn Timber at 6%, Cocoa at 4%, Fish at 3%, Beef and Alcoholic Drink at 2% each, while, the rest of the commodities recorded less than 1% and other products at 16%. Other products comprised mainly of Toilet Paper and Waste and scrap of cast iron and alloy steel.

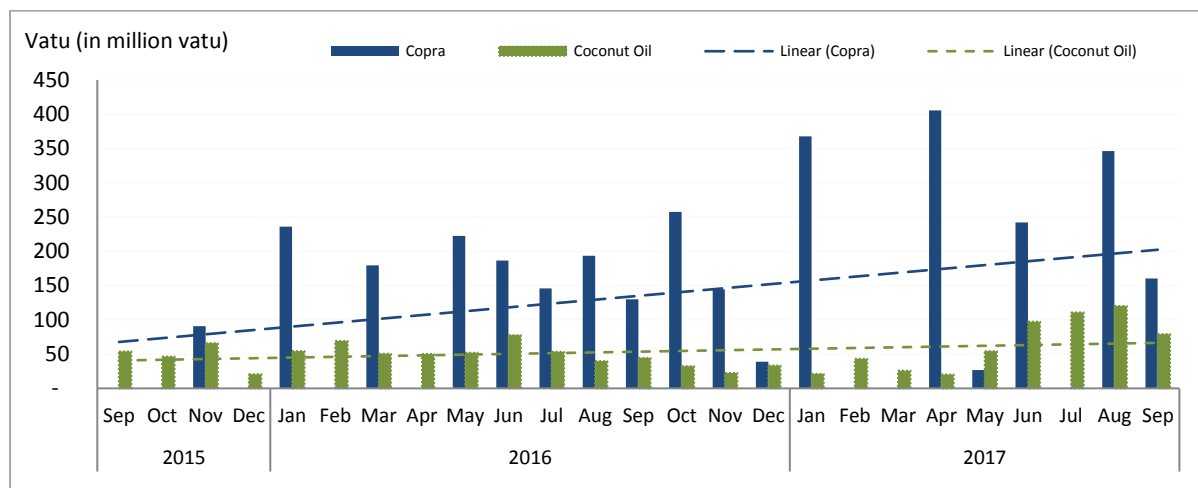


Figure 3: Exports of Coconut Products (million vatu)

In September 2017, Coconut Product exports in value recorded an increase for coconut oil at VT 34 million or 77%, followed by Copra exports which increased by VT 31 million or 24% compared to the same period of 2016. Coconut Meal also registered an increase of VT 5 million over September 2016.

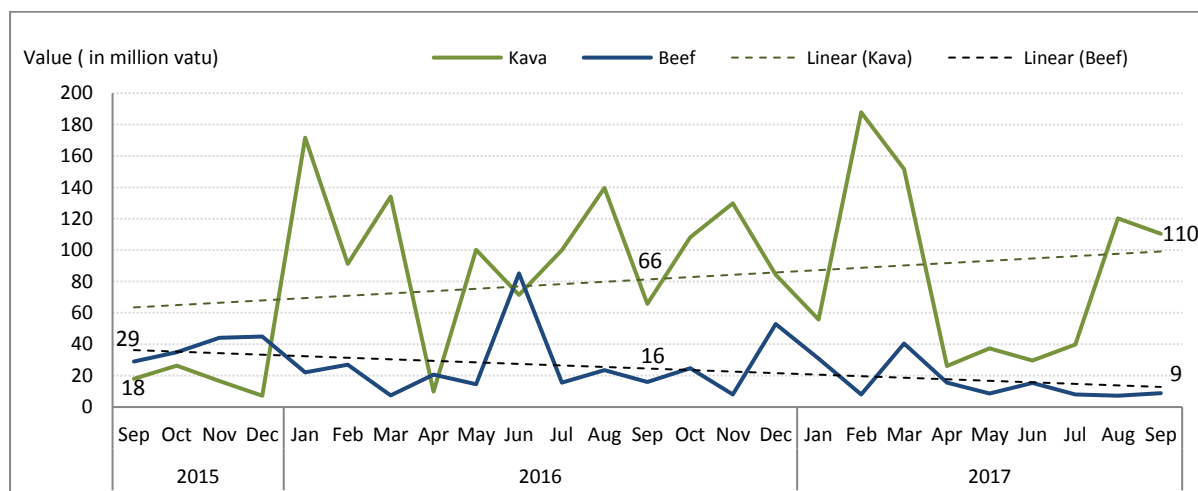


Figure 4: Exports of Kava and Beef Products (million vatu)

Compared to September 2016, Kava exports in value increased by 68% or VT 45 million from VT 66 million to VT 110 million in September 2017. Meanwhile, beef exports decreased by 44% or VT 7 million from VT 16 million to VT 9 million in September 2017. Most of the kava was exported to New Caledonia and Kiribati.

## IMPORTS

In terms of share of commodity groups to total imports receipts, Machines and transport equipment represented the largest value (C.I.F) of VT1,422 million or 36% of the total imports for home consumption in September 2017, followed by Food and Live Animals at 16%, Basic Manufactured Products at 15%, Mineral Fuels at 11%, Miscellaneous Manufactured Goods at 10%, chemical products at 5%, Beverage and Tobacco at 3%, Crude Minerals and Goods not classified elsewhere at 2% each and Oils, Fats and Waxes at 1%.

Compared to September 2016, the commodity groups which increased were: Machines and Transport Equipment at VT757 million, followed by Mineral Fuels at VT290 million, Miscellaneous Manufactured Goods at 48% or VT130 million, basic manufactured goods at 22% or VT111 million, food and live animals at 16% or VT87 million, beverages and tobacco at 82% or VT57 million, Goods not included elsewhere at VT37 million, Oils, fats and waxes at 29% or VT5 million and crude materials at 2% or VT2 million. Meanwhile, the only commodity in this group that decreased was chemical Products at (9%) or VT17 million over September 2017.

## REVISIONS TO IMPORTS AND EXPORTS STATISTICS

The Vanuatu National Statistics Office receives import and export statistics data on quantity and value from the Department of Customs and Inland Revenue's ASYCUDA merchandise trade processing system. On occasion revisions are made to import and export entries after publication. The Vanuatu National Statistics Office makes every possible effort to check the data and resolve inconsistencies and anomalies with colleagues from the Department of Customs and Inland Revenue prior to publishing. Where revisions are necessary these are highlighted in the statistical tables.

## CONCEPTS AND DEFINITIONS

- **Imports for Home Consumption** are goods, materials or articles purchased in other countries and brought into Vanuatu and cleared through customs procedures for home consumption. Imports for home consumption are valued on a C.I.F. (cost, insurance, freight) basis. This means that for each commodity, the value recorded includes the factory price, the cost of packaging, the freight cost from overseas to Vanuatu ports and the insurance.
- **Exports** are expressed in F.O.B. (free on board) prices. It means the total value includes the production cost and the transport cost to the Vanuatu port of export.
- **Imports for re-export** refers to imports destined to be re-exported without having undergone any transformation, or only minor ones. This is especially the case of duty free goods and fuel "imported" into the country and sold to non-resident airline operators or ships.
- **Re-exports** are goods, materials or articles exported in the same condition as they were imported, and imported goods, which have undergone operations such as repair, repacking, or bottling which leave them essentially unchanged before exporting.

**ATTACHED**

- Table 1: Summary of Merchandise trade
- Table 2: Principal domestic exports, value
- Table 3: Principal domestic exports, quantity
- Table 4: Imports cleared for home consumption, value

**NEXT UPDATE (MONTHLY)**

October 2017

**RELEASE DATE**12<sup>th</sup> July 2018**FOR MORE INFORMATION**

For statistical enquiries about this topic, Please do not hesitate to contact:

Vanuatu National Statistics Office: (678) 22110/22111/33040, Voip: 1124

Email: [stats@vanuatu.gov.vu](mailto:stats@vanuatu.gov.vu)

Website: <http://www.vnso.gov.vu> Facebook: [www.facebook.com/NSOVU](http://www.facebook.com/NSOVU)

**PROVINCIAL STATISTICS OFFICES**

Millennium Building  
Luganville, Santo  
**SANMA**



**Mr Simil Johnson**  
**Government Statistician**

**Table 1 Summary of Overseas Trade**  
**Tableau 1 Récapitulatif du commerce extérieur**

**In Million Vatu**  
**En millions de Vatu**

Year / Quarter	EXPORTS F.O.B / EXPORTATION FAB						IMPORTS C.I.F / IMPORTATIONS CAF						Année	Trimestre	
	Domestic Exports Exportation de produits locaux			Re-exports	Total Exports		Imports for Home Consumption / Importations destinées à la Consommation intérieure			Imports for Re- exports	Total Imports	Trade Balance			Balance Ratio
	Luganville	Port Vila	Total	Ré- exportations	Total des Exportations (E)	Luganville	Port Vila	Total	Importations pour ré- exportations	Total des Importations (I)	Déficit Commercial (E)-(I)	Taux de Couverture (E)/(I)			
2013	2,233	1,419	3,653	-	3,653	4,184	25,262	29,446	207	29,652	(26,000)	0.1	2013		
2014	4,274	1,826	6,100	-	6,100	4,587	25,610	30,197	237	30,435	(24,335)	0.2	2014		
2015	2,971	1,278	4,249	-	4,249	6,298	33,500	39,798	190	39,989	(35,740)	0.1	2015		
2016	3,940	1,506	5,446	-	5,446	5,722	34,251	39,973	1,435	41,408	(35,962)	0.1	2016		
2015 1st	555	266	821	-	821	1,182	5,985	7,167	25	7,192	(6,371)	0.1	2015 1er		
2nd	715	229	944	-	944	1,111	11,515	12,626	95	12,720	(11,776)	0.1	2ème		
3rd	746	585	1,331	-	1,331	2,656	7,046	9,702	36	9,739	(8,408)	0.1	3ème		
4th	954	199	1,153	-	1,153	1,350	8,953	10,303	34	10,337	(9,184)	0.1	4ème		
2016 1st	997	595	1,592	-	1,592	1,244	8,270	9,514	693	10,207	(8,615)	0.2	2016 1er		
2nd	814	350	1,164	-	1,164	1,093	8,805	9,898	537	10,435	(9,272)	0.1	2ème		
3rd	1,025	270	1,295	-	1,295	1,554	8,814	10,369	152	10,521	(9,226)	0.1	3ème		
4th	1,104	292	1,396	-	1,396	1,831	8,361	10,192	52	10,244	(8,848)	0.1	4ème		
2017 1st	986	232	1,218	-	1,218	1,050	7,166	8,216	60	8,276	(7,059)	0.1	2017 1er		
2nd	1,101	107	1,208	-	1,208	1,348	7,681	9,029	39	9,068	(7,860)	0.1	2ème		
3rd	1,176	509	1,685	129	1,814	1,425	9,296	10,721	42	10,762	(8,949)	0.2	3ème		
2016 Jan	397	187	584	-	584	513	2,773	3,285	66	3,351	(2,768)	0.2	2016 Jan		
Feb	328	241	570	-	570	427	2,064	2,491	530	3,022	(2,452)	0.2	Fev		
Mar	272	167	439	-	439	304	3,434	3,737	97	3,834	(3,395)	0.1	Mar		
Apr	75	112	187	-	187	325	3,640	3,966	401	4,366	(4,179)	0.0	Avr		
May	368	81	449	-	449	375	2,546	2,921	128	3,049	(2,600)	0.1	Mai		
Jun	371	156	527	-	527	393	2,618	3,012	8	3,020	(2,493)	0.2	Juin		
Jul	316	105	421	-	421	503	3,923	4,425	45	4,470	(4,050)	0.1	Jul		
Aug	472	100	572	-	572	565	2,833	3,398	65	3,464	(2,892)	0.2	Aug		
Sep	237	65	302	-	302	486	2,059	2,545	42	2,587	(2,285)	0.1	Sep		
Oct	496	122	618	-	618	440	2,944	3,384	39	3,423	(2,804)	0.2	Oct		
Nov	410	81	491	-	491	648	2,536	3,184	9	3,193	(2,702)	0.2	Nov		
Dec	198	89	286	-	286	743	2,881	3,624	4	3,628	(3,342)	0.1	Dec		
2017 Jan	488	103	591	-	591	315	2,248	2,563	13	2,576	(1,984)	0.2	2017 Jan		
Feb	249	58	307	-	307	290	2,334	2,623	12	2,635	(2,328)	0.1	Fev		
Mar	248	71	319	-	319	445	2,584	3,030	36	3,066	(2,747)	0.1	Mar		
Apr	496	42	538	-	538	453	2,585	3,038	12	3,050	(2,513)	0.2	Apr		
May	156	38	194	-	194	348	2,552	2,900	14	2,915	(2,720)	0.1	Mai		
Jun	449	27	476	-	476	546	2,544	3,090	13	3,103	(2,627)	0.2	Juin		
Jul	188	200	389	-	389	327	2,553	2,880	11	2,891	(2,502)	0.1	Jul		
Aug	589	167	757	64	821	688	3,150	3,838	16	3,854	(3,033)	0.2	Aug		
Sep	398	142	540	65	604	410	3,593	4,003	15	4,018	(3,413)	0.2	Sep		

Source: Department of Customs and Inland Revenue / Service des Douanes et Contributions Indirectes ( r ) revised data

**Table 2 Principal Domestic Exports, in Value**  
**Tableau 2 Principales exportations de produits locaux, en valeur**

**In million Vatu**  
**En millions de Vatu**

Year Quarter	Copra	Coconut oil	Beef veal	Cocoa	Shell	Sawn Timber	Cowhides	Kava	Coffee	Vanilla	Coconut Meal	Root crops	Live Cattle	Live Fish	Alcoholic Drink	Fish	Other products	Total	Année Trimestre
	Coprah	Huile de coco	Viande bovine	Cacao	Coquillages	Bois débité	Cuir et peaux		Café	Vanille	Farine de coprah	Récolte de racines	Bétail vivant	Poisson vivant	Boissons Alcoolisées	Poisson	Autres produits		
2013	452	458	326	294	30	165	28	834	6	7	143	-	-	88	116	139	566	3,651	2013
2014	1,485	1,081	441	454	44	425	27	807	28	4	117	0	-	142	3	10	1,032	6,100	2014
2015	749	826	344	330	27	378	18	180	11	0	331	0	-	116	1	-	938	4,249	2015
2016	1,735	579	318	409	21	125	7	1,206	12	0	92	25	-	53	2	14	848	5,446	2016
2015 1st	122	312	73	16	-	21	4	64	1	0	51	0	-	67	-	-	90	821	2015 1er
2nd	174	220	82	87	27	45	4	19	3	-	155	0	-	12	0	-	116	944	2ème
3rd	361	161	66	72	-	273	4	47	4	-	72	-	-	17	-	-	254	1,331	3ème
4th	91	133	124	154	-	39	5	50	3	-	53	-	-	20	1	-	478	1,153	4ème
2016 1st	415	174	56	65	9	28	4	397	2	-	54	-	-	9	-	-	377	1,593	2016 1er
2nd	409	180	121	38	-	29	1	181	4	0	12	0	-	17	1	-	171	1,164	2ème
3rd	469	138	55	127	11	17	-	305	4	0	10	-	-	12	1	-	145	1,295	3ème
4th	441	88	86	180	-	51	1	322	2	0	16	25	-	15	0	14	154	1,395	4ème
2017 1st	368	90	79	39	5	72	2	395	4	0	9	-	-	22	-	-	132	1,217	2017 1er
2nd	674	172	40	37	-	96	1	93	2	0	13	0	-	13	-	-	67	1,208	2ème
3rd	507	310	24	54	-	73	-	270	4	-	23	-	-	10	12	14	385	1,685	3ème
2016 Jan	236	54	22	37	9	9	3	172	1	-	6	-	-	3	-	-	34	584	2016 Jan
Feb	-	69	27	22	-	13	1	91	1	-	41	-	-	3	-	-	303	570	Fev
Mar	179	50	7	7	-	7	-	134	1	-	8	-	-	4	-	-	41	438	Mar
Apr	-	50	21	6	-	1	-	10	1	-	12	0	-	5	1	-	81	187	Avr
May	223	52	15	4	-	5	1	100	1	0	-	-	-	8	-	-	42	450	Mai
Jun	187	78	85	28	-	23	-	71	2	-	-	-	-	5	-	-	49	527	Jui
Jul	146	53	16	46	11	8	-	100	3	-	9	-	-	3	-	-	25	421	Jul
Aug	194	40	24	80	-	-	-	140	1	0	-	-	-	5	1	-	88	572	Août
Sep	130	45	16	0	-	10	-	66	-	-	1	-	-	4	0	-	32	302	Sep
Oct	258	32	25	82	-	8	-	108	1	-	9	25	-	4	-	-	67	618	Oct
Nov	144	22	8	98	-	26	1	130	1	-	2	-	-	6	0	14	37	491	Nov
Dec	39	33	53	-	-	17	-	84	0	0	4	-	-	5	-	-	50	286	Dec
2017 Jan	368	21	31	29	5	10	-	56	2	0	2	-	-	8	-	-	60	591	2017 Jan
Feb	-	43	8	3	-	11	2	188	1	-	5	-	-	5	-	-	41	307	Fev
Mar	-	26	40	7	-	51	-	152	1	-	1	-	-	9	-	-	32	319	Mar
Apr	406	20	16	3	-	41	-	26	2	-	1	-	-	6	-	-	17	538	Apr
May	27	54	9	5	-	30	1	38	0	0	2	0	-	4	-	-	25	194	May
Jun	242	97	15	29	-	26	-	30	0	-	10	-	-	3	-	-	24	476	Jun
Jul	-	111	8	18	-	17	-	40	-	-	10	-	-	2	-	-	183	389	Jul
Aug	346	120	7	16	-	22	-	120	0	-	7	-	-	3	0	-	115	757	Aug
Sep	160	79	9	20	-	35	-	110	4	-	6	-	-	4	12	14	87	540	Sep

Source: Department of Customs and Inland Revenue / Service des Douanes et Contributions Indirectes (r) revised data

Note: Totals may be slightly different due to roundings

**Table 3 Principal Domestic Exports, in Quantity**  
**Tableau 3 Principales exportations, en quantité**

**In tonnes**  
**En tonnes**

Year / Quarter	Coconut		Beef veal	Cocoa	Shell	Cowhides	Kava	Coffee	Vanilla	Coconut		Root crops	Live Cattle	Live Fish	Fish	Année Trimestre
	Copra	oil								Meal	Farine de coprah					
	Coprah	Huile de coco	Viande bovine	Cacao	Coquillages	Cuir et peaux		Café	Vanille		Récolte de racines	Bétail vivant	Poisson vivant	Poisson		
2013	12,508	5,535	703	1,649	10	402	819	6	2	7,692	-	-	77	391	2013	
2014	25,194	9,208	1,014	2,025	13	287	786	28	1	4,786	1	-	126	28	2014	
2015	12,584	6,570	677	1,282	8	203	158	9	-	5,011	0	-	110	-	2015	
2016	27,932	6,056	554	2,228	6	89	1,052	12	0	2,741	16	-	64	5	2016	
2015 1st	2,013	2,241	150	106	-	41	65	1	-	1,254	-	-	62	-	2015 1er	
2nd	3,018	1,724	160	347	8	59	13	3	-	1,135	0	-	17	-	2ème	
3rd	6,031	1,631	140	271	-	43	27	3	-	1,326	-	-	15	-	3ème	
4th	1,522	974	227	558	-	60	53	2	-	1,296	-	-	16	-	4ème	
2016 1st	6,927	1,821	109	646	3	58	300	2	-	1,541	-	-	8	-	2016 1er	
2nd	6,437	1,870	223	164	-	13	156	4	0	340	0	-	12	-	2ème	
3rd	9,114	1,380	102	437	4	-	286	4	0	193	0	-	32	-	3ème	
4th	5,455	985	121	981	-	19	309	2	-	667	16	-	11	5	4ème	
2017 1st	4,189	899	144	208	2	20	377	6	0	378	-	-	14	-	2017 1er	
2nd	8,293	1,637	225	-	37	17	33	1	0	578	0	-	8	-	2ème	
3rd	6,400	2,342	378	-	28	-	246	4	-	821	-	-	8	230	3ème	
2016 Jan	4,138	564	44	139	3	39	131	0	-	249	-	-	3	-	2016 Jan	
Feb	-	736	51	208	-	18	80	1	-	921	-	-	2	-	Fev	
Mar	2,789	521	14	300	-	-	88	1	-	371	-	-	3	-	Mar	
Apr	-	525	41	24	-	-	8	1	-	340	0	-	4	-	Avr	
May	3,503	546	29	15	-	13	87	1	0	-	-	-	5	-	Mai	
Jun	2,934	799	154	125	-	-	61	2	-	-	-	-	4	-	Jui	
Jul	2,232	508	28	152	4	-	92	3	-	157	-	-	3	-	Jul	
Aug	5,211	407	45	285	-	-	135	1	0	-	-	-	4	-	Aug	
Sep	1,671	465	29	1	-	-	59	-	-	36	0	-	26	-	Sep	
Oct	3,666	344	44	345	-	-	107	1	-	388	16	-	3	-	Oct	
Nov	1,788	237	16	407	-	19	128	1	-	78	-	-	4	5	Nov	
Dec	-	404	61	229	-	-	74	0	-	200	-	-	4	-	Dec	
2017 Jan	4,189	210	55	148	2	-	54	3	0	91	-	-	5	-	2017 Jan	
Feb	-	433	15	14	-	20	180	1	-	235	-	-	3	-	Fev	
Mar	-	255	74	46	-	-	143	1	-	52	-	-	5	-	Mar	
Apr	4,968	210	27	15	-	-	8	1	-	41	-	-	4	-	Apr	
May	340	755	16	30	-	17	13	0	0	89	0	-	2	-	May	
Jun	2,985	672	28	180	-	-	11	0	-	448	-	-	2	-	Jun	
Jul	-	798	15	108	-	-	17	-	-	254	-	-	2	-	Jul	
Aug	4,406	959	13	90	-	-	119	0	-	317	-	-	3	-	Aug	
Sep	1,994	585	16	180	-	-	110	4	-	250	-	-	3	51	Sep	

Source: Department of Customs and Inland Revenue / Service des Douanes et Contributions Indirectes (r) revised data

**Table 4 Imports Cleared for Home Consumption, in Value**  
**Tableau 4 Importations destinées à la consommation intérieure par produit selon la Classification type pour le commerce international, en valeur**

**In million Vatu**  
**En million de Vatu**

Year	Quarter	Food & Live Animals	Beverages & Tobacco	Crude Materials Except Fuels	Mineral Fuels	Oils, Fats & Waxes	Chemical Products	Basic Manufactured Products	Machines & Transport Equipment	Miscellaneous Manufactured Goods	Goods N.E.C.	Total	Année	Trimestre
		Produits alimentaires et animaux vivants	Boissons et tabacs	Matières brutes non combustibles	Energie fossile	Huiles et graisses animales et végétales	Produits chimiques	Produits manufacturés	Machines et matériels de transports	Produits manufacturés divers	Articles et transactions, N.C.A			
2013		6,068	1,146	510	4,599	124	2,685	3,950	6,881	3,165	319	29,446	2013	
2014		5,904	1,176	470	5,290	107	2,269	3,627	7,960	3,110	285	30,197	2014	
2015		8,360	1,096	743	4,238	141	2,396	9,785	9,408	3,577	55	39,798	2015	
2016		8,449	1,293	757	3,405	141	2,605	7,355	10,341	5,203	423	39,972	2016	
2015	1st	1,406	271	102	1,352	33	454	1,193	1,658	661	38	7,167	2015	1er
	2nd	2,993	240	237	1,277	33	641	4,261	2,042	897	5	12,626		2ème
	3rd	1,751	270	204	789	25	622	2,183	2,991	866	2	9,702		3ème
	4th	2,211	314	200	820	50	680	2,148	2,718	1,153	10	10,303		4ème
2016	1st	2,587	327	114	733	33	505	1,490	3,041	684	2	9,514	2016	1er
	2nd	1,721	299	174	635	31	757	2,320	2,346	1,586	29	9,898		2ème
	3rd	1,975	318	220	823	38	632	1,792	2,436	1,868	267	10,369		3ème
	4th	2,166	350	249	1,215	39	711	1,753	2,518	1,066	125	10,192		4ème
2017	1st	1,531	473	154	590	21	666	1,506	2,244	820	210	8,216	2017	1er
	2nd	1,771	321	146	1,424	44	655	1,573	2,152	810	134	9,029		2ème
	3rd	2,090	285	247	782	51	644	1,599	3,864	1,008	152	10,721		3ème
2016	Jan	637	106	31	462	9	178	386	1,299	179	0	3,285	2016	Jan
	Feb	461	153	43	237	15	157	628	590	207	0	2,491		Fev
	Mar	1,490	68	40	35	9	170	475	1,152	298	2	3,737		Mar
	Apr	560	115	71	133	18	204	1,166	753	945	0	3,966		Avr
	May	470	105	34	461	7	296	537	689	321	1	2,921		Mai
	Jun	691	79	69	40	7	257	617	904	320	27	3,012		Jui
	Jul	674	107	81	308	4	186	575	1,009	1,264	219	4,425		Jul
	Aug	756	142	65	354	18	243	708	762	330	20	3,398		Août
	Sep	545	69	75	161	16	203	508	665	273	28	2,545		Sep
	Oct	721	78	94	518	9	232	555	795	317	65	3,384		Oct
	Nov	811	158	81	102	13	239	615	758	378	27	3,184		Nov
	Dec	634	114	73	595	17	241	583	965	371	33	3,624		Dec
2017	Jan	424	150	47	43	16	205	459	824	280	114	2,563	2017	Jan
	Feb	488	110	44	497	1	176	454	543	268	43	2,623		Fev
	Mar	619	213	63	50	4	285	593	877	271	54	3,030		Mar
	Apr	528	79	38	679	10	174	467	789	238	35	3,038		Apr
	May	666	110	57	30	17	226	695	795	282	21	2,900		May
	Jun	576	132	50	714	17	255	410	568	290	78	3,090		Jun
	Jul	646	74	76	40	17	183	351	1,130	314	48	2,880		Jul
	Aug	812	86	94	290	13	276	628	1,311	291	38	3,838		Aug
	Sep	632	126	77	452	21	186	619	1,422	403	66	4,003		Sep

Source: Department of Customs and Inland Revenue / Service des Douanes et Contributions Indirectes