

STATISTICS UPDATE: MERCHANDISE TRADE STATISTICS

JANUARY 2015 HIGHLIGHTS

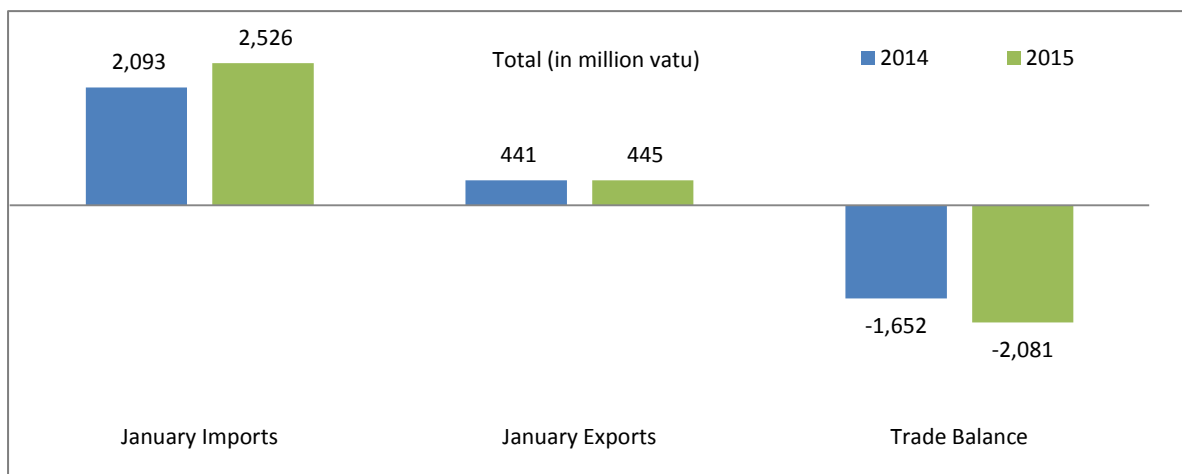


Figure 1: Terms of trade January 2015 and January 2014 (Million Vatu)

The January 2015 merchandise trade provisional figures recorded a deficit balance of VT2,081 million compared to January 2014 from VT1,652 million, indicating a deterioration of 26% or VT428 million. This deterioration reflects the increase in total imports by 21% or VT433 million. However, total exports increased by 1% from VT441 million in January 2014 to VT445 million in January 2015.

Domestic exports earnings (excluding re-exports) for January 2015 increased by 1% or VT4 million over January 2014. This increase was mainly due to a boost in coconut oil exports when compared to the corresponding month of the previous year.

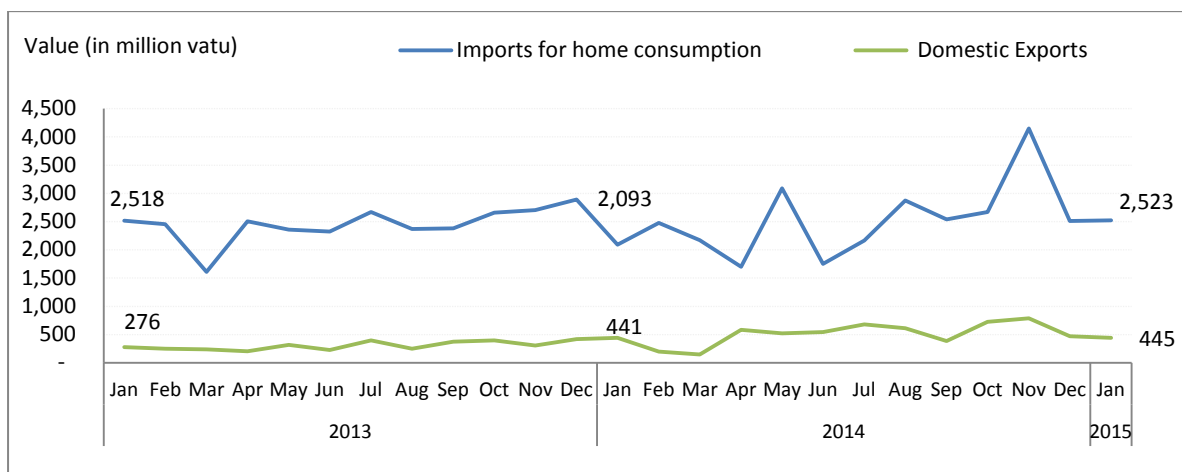


Figure 2: Overseas trade exports and imports for home consumption (million vatu)

EXPORTS

In January 2015, for the main export commodities, Coconut oil constituted the largest share in value at VT210 million or 47%, followed by live fish at 60 million or 13%, kava at VT 40 million or 9%, beef at VT27 million or 6%, coconut meal 4%, sawn timber and cocoa 3% each, and other products at 14% while the remaining domestic products recorded less than 1%. Other products comprised of artifacts, scrap metals, tahitian limes, dry sea cucumber and personal and household effects over January 2014. (See at tached Table 2, Table 3)

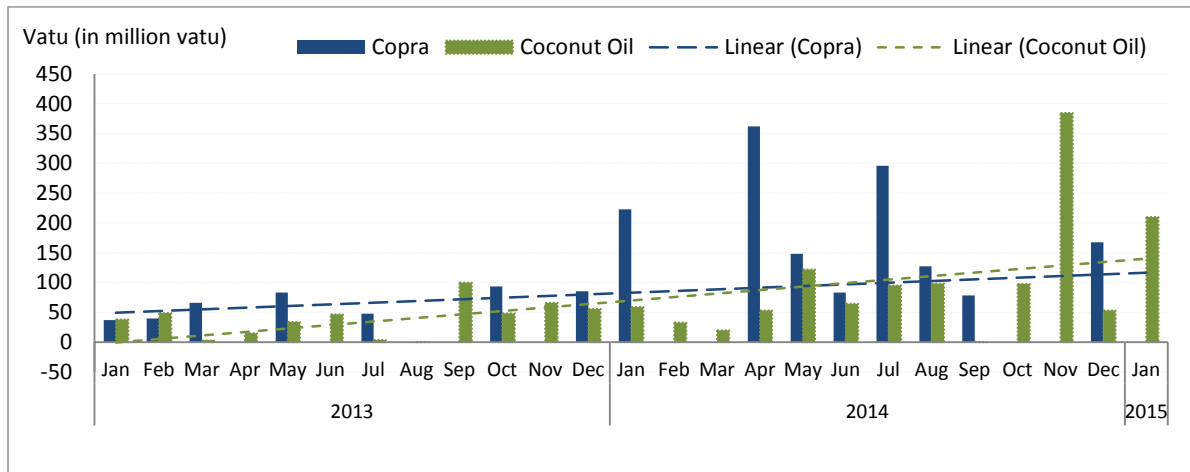


Figure 3: Exports of Coconut Products (million vatu)

Coconut products exports in January 2015 recorded significant increases in coconut oil and coconut meal exports. The increases represented an excess of VT151 million and VT10 million respectively over January 2014. However there was no exports for copra in January 2015.

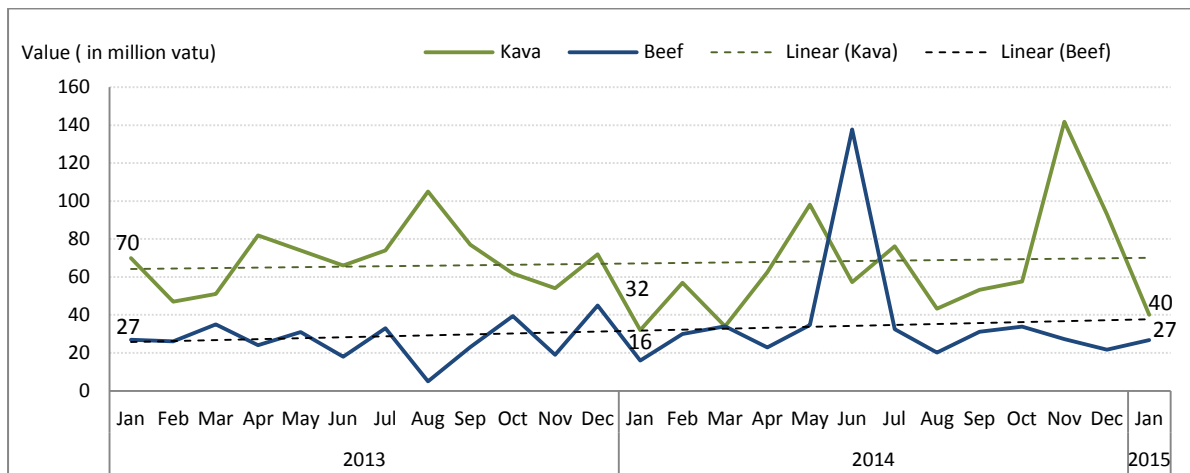


Figure 4: Exports of Kava and Beef Products (million vatu)

Kava exports stood at VT40 million in January 2015, an increase of 25% or VT8 million compared to VT32 million over January 2014. Beef exports recorded VT27 million in January 2015, an increase of 69% or VT11 million compared to VT16 million during the corresponding year. The bulk of kava exports were mainly to Guam, New Caledonia, Fiji and United States of America this month, while most of the beef exported mainly to Japan, Australia and Papua New Guinea and Solomon Islands compared to the same period of last year.

IMPORTS

In terms of imports by commodity groups, mineral fuels registered the largest share in value (C.I.F) at 29% or 216 million of the total imports for home consumption, followed by machines and transport equipment at 21% or VT110 million, food and live animals 16%, basic manufactured goods 15%, miscellaneous goods 7%, chemical products 5%, beverages and tobacco 3%, crude materials and goods not classified elsewhere 1% each and other products such as, oils and fats made up less than 1% each of the total imports in January 2015 compared to the same period in 2014.

The commodity group which increased the most in January 2015 were oils and fats, at 189% or VT8 million, rising from VT4 million in January 2014 to VT12 million, followed by goods not classified elsewhere at 155% or VT17million, mineral fuels 42%, machines and transport equipment and beverages and tobacco 26% each, basic and manufactured goods 19%, crude materials 17%, and food and live animals 13% altogether over January 2014. However, the rest of the imported goods which decreased were: chemical products (-20%) or VT35 million and miscellaneous goods at (-8%) or VT16 million over January 2014. The distribution of imported goods by country grouping was stable over the same period January 2014. Australia, china and New Zealand were the main countries of origin of imports for home consumption in January 2015.

REVISIONS TO IMPORTS AND EXPORTS STATISTICS

The Vanuatu National Statistics Office receives import and export statistics data on quantity and value from the Department of Customs and Inland Revenue's ASYCUDA merchandise trade processing system. On occasion revisions are made to import and export entries after publication. The Vanuatu National Statistics Office makes every possible effort to check the data and resolve inconsistencies and anomalies with colleagues from the Department of Customs and Inland Revenue prior to publishing. Where revisions are necessary these are highlighted in the statistical tables.

CONCEPTS AND DEFINITIONS

- **Imports for Home Consumption** are goods, materials or articles purchased in other countries and brought into Vanuatu and cleared through customs procedures for home consumption. Imports for home consumption are valued on a C.I.F. (cost, insurance, freight) basis. This means that for each commodity, the value recorded includes the factory price, the cost of packaging, the freight cost from overseas to Vanuatu ports and the insurance.
- **Exports** are expressed in F.O.B. (free on board) prices. It means the total value includes the production cost and the transport cost to the Vanuatu port of export.
- **Imports for re-export** refers to imports destined to be re-exported without having undergone any transformation, or only minor ones. This is especially the case of duty free goods and fuel "imported" into the country and sold to non-resident airline operators or ships.
- **Re-exports** are goods, materials or articles exported in the same condition as they were imported, and imported goods, which have undergone operations such as repair, repacking, or bottling which leave them essentially unchanged before exporting.

ATTACHED

- Table 1: Summary of Merchandise trade
- Table 2: Principal domestic exports, value
- Table 3: Principal domestic exports, quantity
- Table 4: Imports cleared for home consumption, value

NEXT UPDATE (MONTHLY)

RELEASE DATE

February

20th April 2015

FOR MORE INFORMATION

For statistical enquiries about this topic, Please do not hesitate to contact:

Vanuatu National Statistics Office: (678) 22110/22111/33040, Voip: 1124

Email: stats@vanuatu.gov.vu

Website: <http://www.vnso.gov.vu>

Facebook: www.facebook.com/NSOVU

PROVINCIAL STATISTICS OFFICES

PO Box 22
Lakatoro, Malekula
MALAMPA

Commercial Center
Lenakel, Tanna
TAFEA

PO Box 8
Saratamata, Ambae
PENAMA

Sola, Vanua Lava
Banks group
TORBA

Millennium Building
Luganville, Santo
SANMA




Simil Johnson
Government Statistician

Table 1 Summary of Overseas Trade
Tableau 1 Récapitulatif du commerce extérieur

In Million Vatu
En millions de Vatu

Year / Quarter	EXPORTS F.O.B / EXPORTATION FAB					IMPORTS C.I.F / IMPORTATIONS CAF							Année	Trimestre
	Domestic Exports Exportation de produits locaux			Re-exports	Total Exports	Imports for Home Consumption / Importations destinées à la Consommation intérieure			Imports for Re- exports	Total Imports	Trade Balance	Balance Ratio		
	Luganville	Port Vila	Total	Ré- exportations	Total des Exportations (E)	Luganville	Port Vila	Total	Importations pour ré- exportations	Total des Importations (I)	Déficit Commercial (E)-(I)	Taux de Couverture (E)/(I)		
2011	3,816	2,196	6,012	-	6,012	4,259	22,803	27,062	193	27,256	(21,243)	0.2	2011	
2012	3,305	1,768	5,072	-	5,072	4,075	22,832	26,907	547	27,454	(22,382)	0.2	2012	
2013	2,233	1,419	3,653	-	3,653	4,184	25,262	29,446	207	29,652	(26,000)	0.1	2013	
2014	4,274	1,826	6,100	-	6,100	4,587	25,610	30,197	237	30,435	(24,335)	0.2	2014	
2013 1st	476	287	764	-	764	1,055	5,531	6,586	35	6,621	(5,857)	0.1	2013	1er
2nd	498	251	749	-	749	1,041	6,145	7,186	38	7,224	(6,475)	0.1		2ème
3rd	597	425	1,022	-	1,022	1,014	6,408	7,422	58	7,480	(6,459)	0.1		3ème
4th	663	455	1,118	-	1,118	1,073	7,178	8,251	75	8,327	(7,209)	0.1		4ème
2014 1st	504	283	787	-	787	998	5,747	6,745	15	6,760	(5,972)	0.1	2014	1er
2nd	1,341	311	1,652	-	1,652	986	5,558	6,544	32	6,577	(4,925)	0.3		2ème
3rd	1,138	539	1,677	-	1,677	1,349	6,229	7,578	146	7,723	(6,047)	0.2		3ème
4th	1,291	693	1,984	-	1,984	1,254	8,077	9,331	44	9,375	(7,391)	0.2		4ème
2014 Jan	337	104	441	-	441	225	1,868	2,093	0	2,093	(1,652)	0.2	2014	Jan
Feb	94	105	199	-	199	495	1,984	2,480	6	2,485	(2,286)	0.1		Feb
Mar	73	74	147	-	147	277	1,895	2,172	9	2,181	(2,034)	0.1		Mars
Apr	488	98	586	-	586	429	1,273	1,703	7	1,710	(1,125)	0.3		Avr
May	420	102	522	-	522	306	2,785	3,090	24	3,115	(2,593)	0.2		Mai
Jun	433	111	544	-	544	251	1,500	1,751	1	1,752	(1,208)	0.3		Juin
Jul	544	134	678	-	678	337	1,830	2,167	3	2,171	(1,493)	0.3		Juil
Aug	332	282	614	-	614	581	2,293	2,874	4	2,878	(2,264)	0.2		Août
Sep	262	123	385	-	385	432	2,106	2,537	138	2,676	(2,291)	0.1		Sep
Oct	268	457	725	-	725	297	2,373	2,670	5	2,675	(1,950)	0.3		Oct
Nov	640	149	789	-	789	482	3,667	4,149	38	4,187	(3,398)	0.2		Nov
Dec	383	87	471	-	471	475	2,037	2,512	1	2,514	(2,043)	0.2		Dec
2015 Jan	259	186	445	-	445	509	2,014	2,523	3	2,526	(2,081)	0.2	2015	Jan

Source: Department of Customs and Inland Revenue / Service des Douanes et Contributions Indirectes

Table 2 Principal Domestic Exports, in Value
Tableau 2 Principales exportations de produits locaux, en valeur

In million Vatu
En millions de Vatu

Year Quarter	Copra	Coconut oil	Beef veal	Cocoa	Shell	Sawn Timber	Cowhides	Kava	Coffee	Vanilla	Coconut Meal	Root crops	Live Cattle	Live Fish	Alcoholic Drink	Fish	Other products	Total	Année Trimestre
	Coprah	Huile de coco	Viande bovine	Cacao	Coquillages	Bois débité	Cuir et peaux		Café	Vanille	Farine de coprah	Récolte de racines	Bétail vivant	Poisson vivant	Boissons Alcoolisées	Poisson	Autres produits		
2011	1,065	1,592	516	247	30	65	29	762	18	5	87	1	0	166	175	359	898	6,012	2011
2012	1,087	1,162	518	258	27	42	27	661	3	11	92	-	-	136	161	185	702	5,072	2012
2013	452	458	326	294	30	165	28	834	6	7	143	-	-	88	116	139	566	3,651	2013
2014	1,485	1,081	441	454	44	425	27	807	28	4	117	0	-	142	3	10	1,032	6,100	2014
2013 1st	143	89	89	23	6	15	8	168	3	2	25	-	-	20	36	55	83	763	2013 1er
2nd	83	95	73	98	8	10	4	223	1	1	17	-	-	25	21	33	57	749	2ème
3rd	48	103	61	123	7	47	10	255	1	1	62	-	-	20	29	33	221	1,022	3ème
4th	179	170	104	51	9	92	5	188	1	3	40	-	-	22	30	19	206	1,118	4ème
2014 1st	223	112	80	9	19	4	5	124	1	1	21	-	-	61	-	8	117	787	2014 1er
2nd	593	240	195	154	0	22	8	218	2	1	28	-	-	27	3	1	160	1,652	2ème
3rd	501	194	84	95	18	268	6	173	15	0	34	0	-	37	-	-	254	1,677	3ème
4th	168	535	83	196	7	130	8	292	10	2	35	0	-	18	-	-	500	1,984	4ème
2014 Jan	223	59	16	6	-	1	3	32	0	1	7	-	-	40	-	4	48	441	2014 Jan
Feb	-	33	30	3	19	0	2	57	-	-	2	-	-	10	-	1	41	199	Fév
Mar	-	20	34	-	-	3	-	34	1	0	12	-	-	10	-	3	29	147	Mars
Apr	362	53	23	5	-	10	3	63	-	0	8	-	-	9	-	1	49	586	Avril
May	148	122	35	44	0	7	2	98	0	0	9	-	-	8	-	-	49	522	Mai
Jun	83	65	138	105	-	6	2	57	1	1	11	-	-	10	3	-	61	544	Juin
Jul	296	95	32	48	18	15	1	76	1	-	13	0	-	10	-	-	74	678	Juil
Aug	127	98	20	42	-	213	5	43	1	0	6	-	-	20	-	-	39	614	Août
Sep	78	1	31	5	-	40	-	53	13	-	15	0	-	7	-	-	142	385	Sep
Oct	-	98	34	59	-	68	5	58	2	-	17	0	-	7	-	-	379	725	Oct
Nov	-	385	27	79	7	53	1	142	1	1	12	0	-	8	-	-	72	789	Nov
Dec	168	53	22	58	-	9	2	93	7	1	6	-	-	3	-	-	49	471	Dec
2015 Jan	-	210	27	12	-	15	2	40	0	0	16	-	-	60	-	-	63	445	2015 Jan

Source: Department of Customs and Inland Revenue / Service des Douanes et Contributions Indirectes (r) revised data

Table 3 Principal Domestic Exports, in Quantity
Tableau 3 Principales exportations, en quantité

In tonnes
En tonnes

Year / Quarter	Copra	Coconut oil	Beef veal	Cocoa	Shell	Cowhides	Kava	Coffee	Vanilla	Coconut Meal	Root crops	Live Cattle	Live Fish	Fish	Année Trimestre
	Coprah	Huile de coco	Viande bovine	Cacao	Coquillages	Cuir et peaux		Café	Vanille	Farine de coprah	Récolte de racines	Bétail vivant	Poisson vivant	Poisson	
2010	12,133	10,325	1,123	1,525	10	226	498	4	1	5,232	0	0	238	381	2010
2011	13,596	12,000	1,105	1,068	10	336	734	27	1	6,917	4	0	205	2,743	2011
2012	16,336	10,011	1,031	1,415	9	387	643	3	3	6,082	-	-	134	682	2012
2013	12,508	5,535	703	1,649	10	402	819	6	2	7,692	-	-	77	391	2013
2014	25,194	9,208	2,025	13	401	287	786	28	1	4,786	1	-	126	28	2014
2013 1st	4,022	838	205	136	2	114	158	3	1	1,660	-	-	13	150	2013 1er
2nd	2,438	1,529	142	491	3	72	223	1	0	1,162	-	-	21	84	2ème
3rd	1,326	1,016	129	724	2	120	252	1	0	2,966	-	-	25	105	3ème
4th	4,722	2,152	227	298	3	96	186	1	1	1,904	-	-	18	52	4ème
2014 1st	4,123	1,524	183	49	5	61	119	1	0	518	-	-	54	25	2014 1er
2nd	9,102	4,127	472	671	0	92	214	2	0	1,469	-	-	17	2	2ème
3rd	8,808	1,722	185	409	6	58	165	15	0	1,512	0	-	35	-	3ème
4th	3,161	1,835	173	896	2	77	288	10	1	1,286	1	-	19	-	4ème
2014 Jan	4,123	837	42	33	-	40	36	-	0	117	-	-	39	10	2014 Jan
Feb	-	536	68	16	5	21	55	-	-	123	-	-	9	5	Fév
Mar	-	151	73	-	-	-	28	1	0	279	-	-	7	10	Mars
Apr	5,551	851	52	28	-	49	61	-	0	419	-	-	6	2	Avril
May	2,273	2,301	85	187	0	21	96	0	0	487	-	-	6	-	Mai
Jun	1,278	976	335	456	-	22	57	2	0	563	-	-	5	-	Juin
Jul	4,770	841	72	210	6	18	72	1	-	369	0	-	6	-	Juil
Aug	2,349	866	45	169	-	40	41	1	0	319	-	-	24	-	Août
Sep	1,689	15	68	30	-	-	52	13	-	824	0	-	5	-	Sep
Oct	-	842	71	237	-	40	57	2	-	467	0	-	6	-	Oct
Nov	-	502	56	419	2	17	139	1	0	527	1	-	12	-	Nov
Dec	3,161	491	46	239	-	20	93	7	0	292	-	-	2	-	Dec
2015 Jan	-	1,725	56	44	-	20	42	0	0	689	-	-	56	-	2015 Jan

Source: Department of Customs and Inland Revenue / Service des Douanes et Contributions Indirectes

Table 4 Imports Cleared for Home Consumption, in Value

Tableau 4 Importations destinées à la consommation intérieure par produit selon la Classification type pour le commerce international, en valeur

**In million Vatu
En million de Vatu**

Year	Quarter	Food & Live	Beverages &	Crude Materials	Mineral	Oils, Fats &	Chemical	Basic	Machines &	Miscellaneous	Goods N.E.C.	Total	Année	Trimestre
		Animals	Tobacco	Except Fuels	Fuels	Waxes	Products	Manufactured	Transport	Manufactured				
		Produits	Boissons et	Matières brutes	Energie	Huiles et	Produits	Produits	Machines et	Produits	Articles et			
		alimentaires	tabacs	non combustibles	fossile	graisses	chimiques	manufacturés	matériels de	manufacturés	transactions,			
		et animaux				animales et			transports	divers	N.C.A			
		vivants				végétales								
2011		5,537	1,038	379	4,835	129	2,855	3,566	5,542	2,820	362	27,062	2011	
2012		5,307	1,153	432	4,621	141	2,809	3,590	5,964	2,575	314	26,907	2012	
2013		6,068	1,146	510	4,599	124	2,685	3,950	6,881	3,165	319	29,446	2013	
2014		5,904	1,176	470	5,290	107	2,269	3,627	7,960	3,110	285	30,197	2014	
2013	1st	1,394	236	88	1,204	24	548	1,006	1,332	657	100	6,587	2013	1er
	2nd	1,349	315	154	1,503	29	689	879	1,457	731	80	7,186		2ème
	3rd	1,459	293	126	1,210	24	703	1,039	1,745	751	74	7,422		3ème
	4th	1,867	302	142	683	47	745	1,027	2,347	1,026	65	8,251		4ème
2014	1st	1,065	264	81	1,667	15	565	895	1,499	617	76	6,745	2014	1er
	2nd	1,327	204	95	1,301	25	505	686	1,642	717	41	6,544		2ème
	3rd	1,733	313	152	1,077	29	574	945	1,850	794	111	7,578		3ème
	4th	1,780	394	142	1,246	38	624	1,101	2,968	981	57	9,331		4ème
2014	Jan	362	69	21	513	4	173	320	420	199	11	2,093	2014	Jan
	Feb	326	88	21	750	7	210	291	587	182	18	2,480		Fev
	Mar	376	108	39	404	4	183	284	492	236	48	2,172		Mars
	Apr	336	67	41	225	9	144	173	467	233	9	1,703		Avril
	May	544	75	30	1,033	9	198	264	649	270	17	3,090		Mai
	Jun	447	62	24	43	7	163	248	527	214	16	1,751		Juin
	Jul	631	77	61	55	10	172	283	557	289	33	2,167		Juil
	Aug	537	122	46	819	15	185	280	591	215	62	2,874		Août
	Sep	565	114	44	203	5	217	382	702	290	17	2,537		Sep
	Oct	501	78	48	687	8	174	288	562	288	34	2,670		Oct
	Nov	661	144	56	521	22	248	392	1,783	308	13	4,149		Nov
	Dec	617	172	38	38	8	202	420	623	385	10	2,512		Dec
2015	Jan	411	87	25	729	12	137	381	530	184	27	2,523	2015	Jan

Source: Department of Customs and Inland Revenue / Service des Douanes et Contributions Indirectes