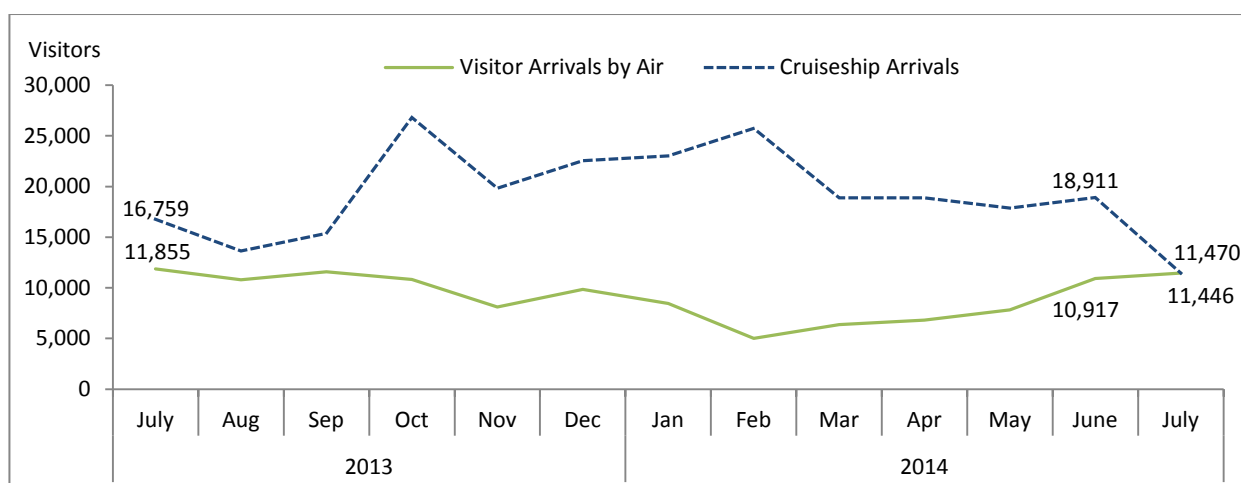


STATISTICS UPDATE: INTERNATIONAL ARRIVAL STATISTICS

JULY 2014 HIGHLIGHTS

OVERVIEW

Figure 1: International Visitor Arrivals: July 2013 to July 2014



- International visitor arrivals¹ in July 2014 contributed 50% of total international arrivals to Vanuatu. Total international visitors registered a decrease over the July 2013, also falling over the previous month.
- Visitor arrivals in July 2014 registered 11,446 visitors by air, showing a decline of 3% over July 2013. The decrease was reflected in visitor arrivals for holiday purposes. Visitors however registered an increase of 5% over the June 2013.
- Cruise ship or day visitors accounted for 50% of total international arrivals in July 2014. Day visitors stood at 11,470 visitors, a decrease of 32% due to a decline in number of cruise ships from 8 in July 2013 to 6 cruise ships in July 2014. Cruise ship visitors declined by 39% over the previous month.

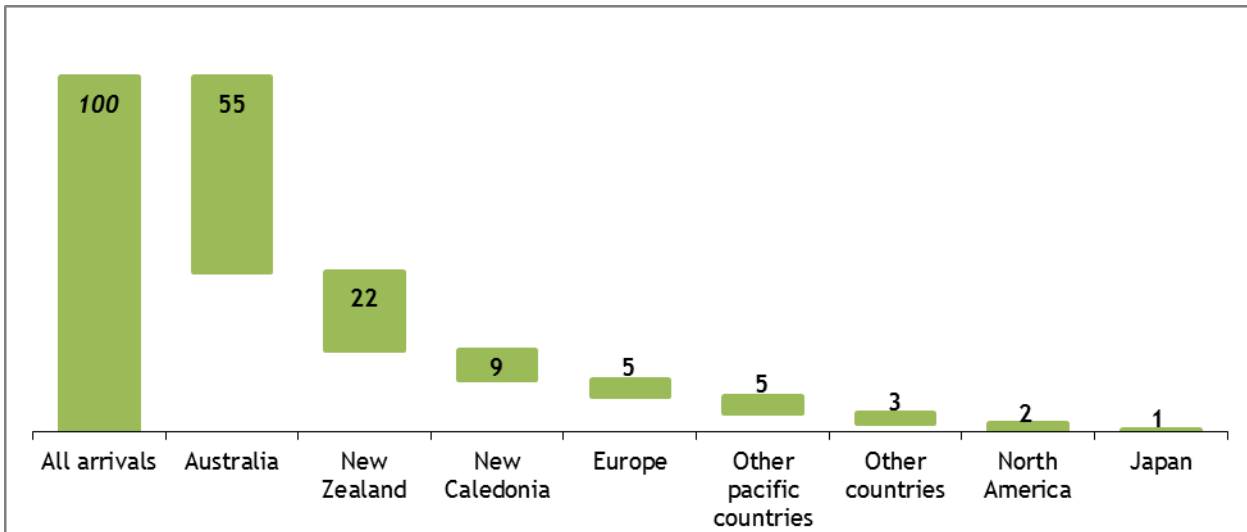
PURPOSE OF VISIT FOR VISITORS ARRIVING BY AIR

- In July 2014, holiday visitors contributed 82% of total visitor arrivals by air, visitors arriving to visit friends and families at 7%, visitors arriving for business, meetings and conferences at 5%, visitors arriving for other purposes, education or sports at 4% and visitors arriving for transit at 1%.

¹ Includes arrivals by yachts and excluding day visitors

COUNTRY OF USUAL RESIDENCE FOR VISITORS ARRIVING BY AIR

Fig 2: Percentage share of visitors in July 2014 by Country of Usual Residence

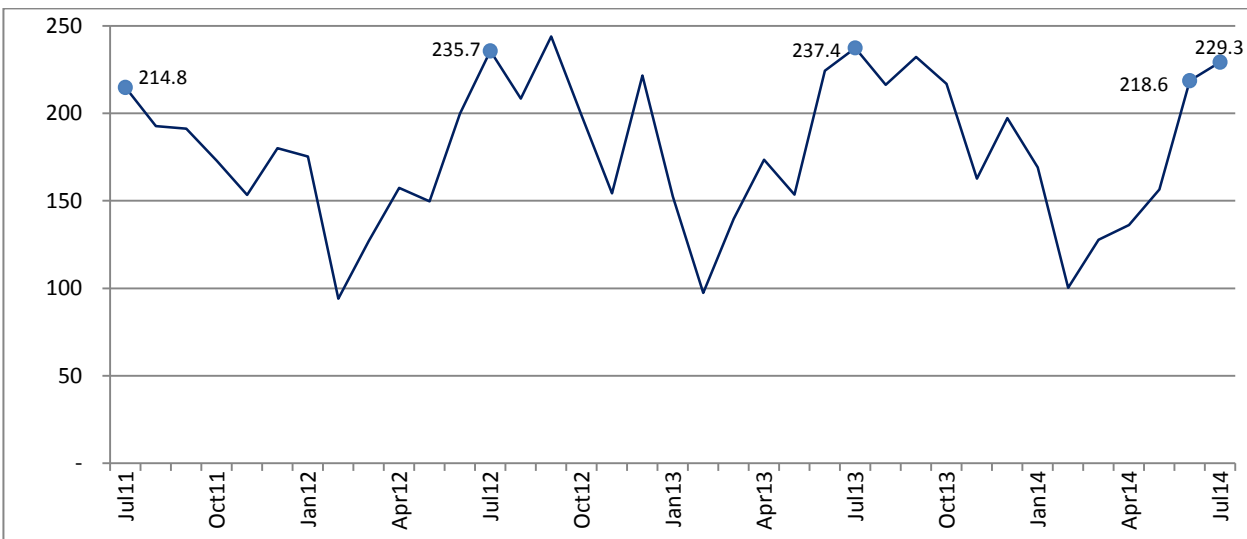


- Australian visitors continue to dominate the number of visitor arrivals by air to Vanuatu, accounting for 55%, followed by New Zealand at 22%, New Caledonia at 9%, Europe and other pacific countries at 5% respectively, other countries at 3%, North America at 2% and Japan at 1%.

VISITOR ARRIVAL INDEX²

Figure 3 shows the total number of visitor arrivals and arrivals from Australia, New Zealand, New Caledonia and all other countries combined to show trends in arrivals, with the number of visitors

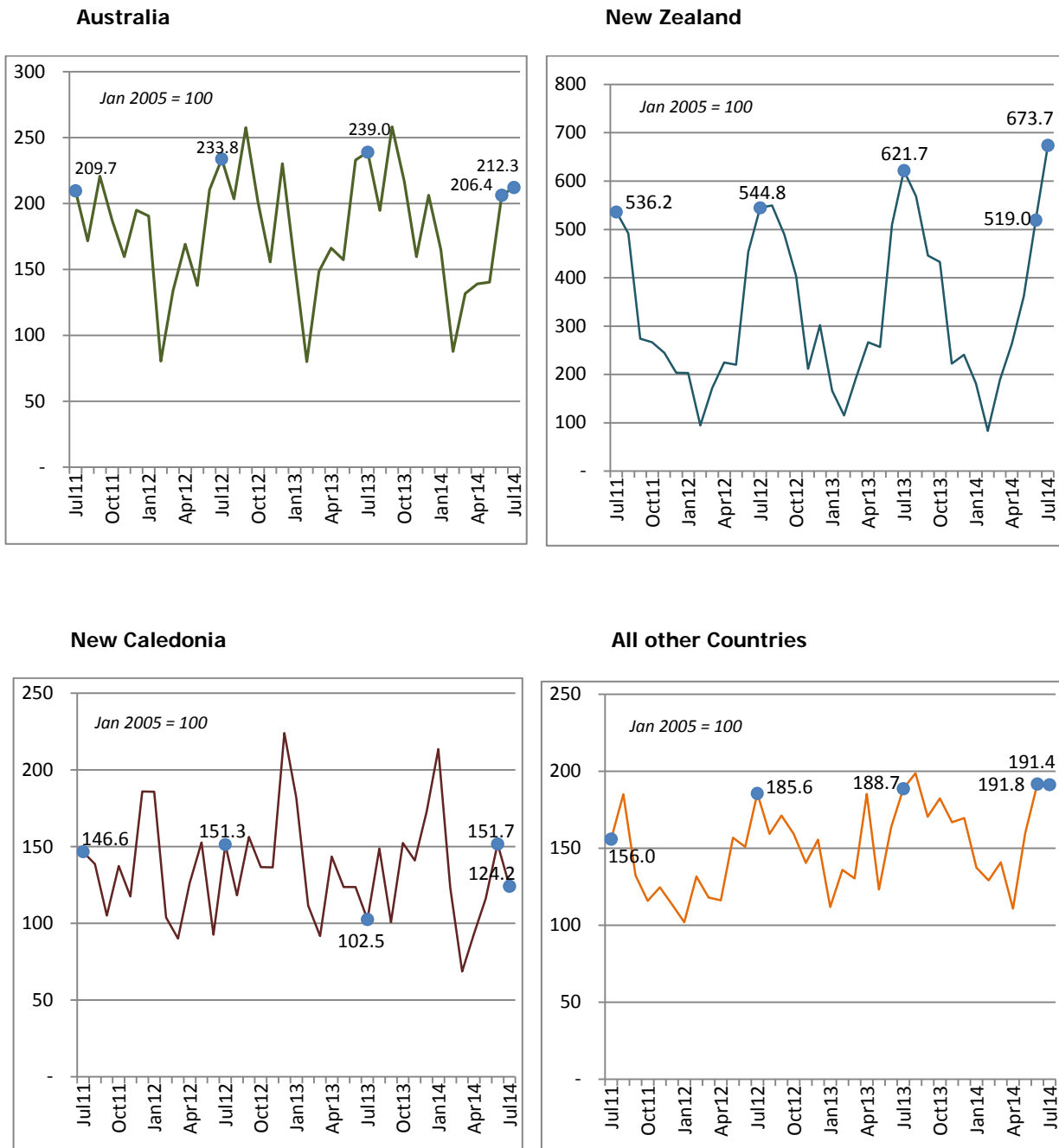
Fig 3: Index of Total Air Visitor Arrivals, July 2011 to July 2014 (January 2005 = 100)



- Total visitor arrivals by air in July 2014 showed decrease in index values at (-3%) over July 2013. (Figure 3)

² Tourism in Vanuatu is seasonal, and it is difficult to analyse changes in international arrivals and country of residence by looking at the monthly number of arrivals based on an index value of 100 in January 2005. This index allows analysis over time of the real increases and decreases in international air arrivals.

Figure 4: Index of Visitor Arrivals and Country of Usual Residence, July 2011 to July 2014 (January 2005 = 100)



Note: the vertical axis scale varies in each country chart.

- In July 2014, the main tourism markets of New Caledonia and New Zealand showed increases in index values of 21% and 8% respectively over July 2013, while the Australian market recorded a decline of 11% in index values. All other countries however registered an increase of 1% in index values over July 2013.

AVERAGE INTENDED LENGTH OF STAY FOR VISITORS ARRIVING BY AIR

- The average intended length of stay in July 2014 stood at 12 days, an increase of 1 day over July 2013, also increasing by 1 day over the previous month.

AVERAGE AGE FOR VISITORS ARRIVING BY AIR

- The average age of visitors in July 2014 stood at 40 years, an increase of 1 year over July 2013, however falling by 5 years over June 2014.

NEXT UPDATE (MONTHLY)

RELEASE DATE

August 2014

24th October 2014

PROVINCIAL STATISTICS OFFICES

| | | | | |
|---|---|--|---|--|
| PO Box 22 Lakatoro, Malekula MALAMPA PROVINCE | Commercial Center Lenakel, Tanna TAFEA PROVINCE | PO Box 8 Saratamata, Ambae PENAMA PROVINCE | Sola, Vanua Lava Banks group TORBA PROVINCE | Millennium Building Luganville, Santo SANMA PROVINCE |
|---|---|--|---|--|

DATA SOURCE

All International arrival statistics by air provided in the report is sourced from completed Arrival and Departure cards at the Department of Immigration. Cruise ship figures are also sourced from the Department of Immigration.




Simil Johnson
Government Statistician

Table 1 : Summary of Overseas Migration
Tableau 1 : Résumé des échanges migratoires avec l'extérieur

| Year | Month | ARRIVALS / ARRIVEES | | | | | | DEPARTURES / DEPARTURES | | | | | | Cruiseship Arrivals/ Croisiéristes | Année | Mois |
|------|-------|------------------------|-----------------------|------------------------|-----------------------|------------------------|-----------------------|-------------------------|----------------------|-----------------------|-----------------------|-----------------------|-----------------------|--|-------|------|
| | | PORT VILA | | LUGANVILLE | | TOTAL | | PORT VILA | | LUGANVILLE | | TOTAL | | | | |
| | | Residents Résidents | Visitors Visiteurs | Residents Résidents | Visitors Visiteurs | Residents Résidents | Visitors Visiteurs | Resident Résidents | Visitor Visiteurs | Resident Résidents | Visitors Visiteurs | Resident Résidents | Visitors Visiteurs | | | |
| 2010 | | 20,531 | 94,909 | 522 | 2,271 | 21,053 | 97,180 | 13,133 | 104,573 | 188 | 1,999 | 13,321 | 106,572 | 140,468 | 2010 | |
| 2011 | | 21,752 | 91,107 | 521 | 2,853 | 22,273 | 93,960 | 12,958 | 96,836 | 156 | 1,954 | 13,114 | 98,790 | 154,938 | 2011 | |
| 2012 | | 22,594 | 105,611 | 364 | 2,550 | 22,958 | 108,161 | 14,803 | 113,158 | 134 | 2,339 | 14,937 | 115,497 | 213,243 | 2012 | |
| 2013 | | 25,116 | 106,466 | 495 | 3,643 | 25,611 | 110,109 | 16,380 | 118,753 | 164 | 3,496 | 16,544 | 122,249 | 247,296 | 2013 | |
| 2010 | July | 1,772 | 10,319 | 43 | 275 | 1,815 | 10,594 | 914 | 11,225 | 15 | 200 | 929 | 11,425 | 9,334 | 2010 | Juil |
| 2011 | July | 1,828 | 10,419 | 38 | 310 | 1,866 | 10,729 | 994 | 11,297 | 30 | 277 | 1,024 | 11,574 | 11,411 | 2011 | Juil |
| 2012 | July | 1,869 | 11,471 | 21 | 299 | 1,890 | 11,770 | 995 | 12,740 | 14 | 337 | 1,009 | 13,077 | 18,595 | 2012 | Juil |
| | Aug | 1,448 | 10,154 | 31 | 251 | 1,479 | 10,405 | 975 | 10,726 | 10 | 215 | 985 | 10,941 | 9,581 | | Aoù |
| | Sep | 2,288 | 11,887 | 24 | 295 | 2,312 | 12,182 | 1,013 | 12,192 | 15 | 251 | 1,028 | 12,443 | 15,104 | | Sep |
| | Oct | 1,717 | 9,663 | 29 | 259 | 1,746 | 9,922 | 1,535 | 11,688 | 11 | 282 | 1,546 | 11,970 | 26,644 | | Oct |
| | Nov | 2,118 | 7,431 | 49 | 273 | 2,167 | 7,704 | 1,593 | 8,852 | 15 | 230 | 1,608 | 9,082 | 16,697 | | Nov |
| | Dec | 2,420 | 10,774 | 49 | 296 | 2,469 | 11,070 | 1,348 | 9,365 | 28 | 317 | 1,376 | 9,682 | 17,188 | | Dec |
| 2013 | Jan | 1,997 | 7,415 | 64 | 197 | 2,061 | 7,612 | 1,331 | 11,574 | 23 | 325 | 1,354 | 11,899 | 33,491 | 2013 | Jan |
| | Feb | 1,333 | 4,809 | 21 | 122 | 1,354 | 4,931 | 1,919 | 5,497 | 14 | 137 | 1,933 | 5,634 | 16,127 | | Fév |
| | Mar | 1,656 | 6,825 | 40 | 152 | 1,696 | 6,977 | 1,465 | 6,799 | 2 | 155 | 1,467 | 6,954 | 16,060 | | Mar |
| | Apr | 2,033 | 8,182 | 50 | 480 | 2,083 | 8,662 | 1,119 | 9,347 | 18 | 399 | 1,137 | 9,746 | 22,314 | | Avr |
| | May | 2,222 | 7,327 | 52 | 343 | 2,274 | 7,670 | 1,337 | 8,232 | 21 | 302 | 1,358 | 8,534 | 16,817 | | Mai |
| | June | 2,250 | 10,806 | 45 | 400 | 2,295 | 11,206 | 1,160 | 10,307 | 11 | 427 | 1,171 | 10,734 | 27,524 | | Juin |
| | July | 2,073 | 11,390 | 44 | 465 | 2,117 | 11,855 | 1,057 | 12,901 | 9 | 412 | 1,066 | 13,313 | 16,759 | | Juil |
| | Aug | 1,769 | 10,682 | 8 | 115 | 1,777 | 10,797 | 1,265 | 11,793 | 2 | 142 | 1,267 | 11,935 | 13,642 | | Aoù |
| | Sep | 2,823 | 11,340 | 26 | 256 | 2,849 | 11,596 | 1,073 | 11,442 | 20 | 284 | 1,093 | 11,726 | 15,370 | | Sep |
| | Oct | 1,739 | 10,392 | 34 | 435 | 1,773 | 10,827 | 928 | 12,254 | 10 | 455 | 938 | 12,709 | 26,805 | | Oct |
| | Nov | 2,539 | 7,825 | 43 | 298 | 2,582 | 8,123 | 2,070 | 9,887 | 17 | 229 | 2,087 | 10,116 | 19,834 | | Nov |
| | Dec | 2,682 | 9,473 | 68 | 380 | 2,750 | 9,853 | 1,656 | 8,720 | 17 | 229 | 1,673 | 8,949 | 22,553 | | Dec |
| 2014 | Jan | 2,303 | 8,288 | 25 | 159 | 2,328 | 8,447 | 1,393 | 11,871 | 10 | 252 | 1,403 | 12,123 | 23,016 | 2014 | Jan |
| | Feb | 1,491 | 4,878 | 49 | 131 | 1,540 | 5,009 | 2,051 | 5,763 | 7 | 85 | 2,058 | 5,848 | 25,728 | | Fév |
| | Mar | 1,693 | 6,169 | 66 | 207 | 1,759 | 6,376 | 1,149 | 7,047 | 7 | 208 | 1,156 | 7,255 | 18,883 | | Mar |
| | Apr* | 1,753 | 6,433 | 76 | 371 | 1,829 | 6,804 | 3,172 | 7,089 | 5 | 351 | 3,177 | 7,440 | 18,880 | | Avr |
| | May | 2,293 | 7,483 | 30 | 329 | 2,323 | 7,812 | 1,360 | 8,231 | 59 | 218 | 1,419 | 8,449 | 17,869 | | Mai |
| | June | 2,154 | 10,481 | 38 | 436 | 2,192 | 10,917 | 967 | 9,984 | 32 | 355 | 999 | 10,339 | 18,911 | | Juin |
| | July | 2,030 | 10,944 | 56 | 502 | 2,086 | 11,446 | 1,339 | 12,891 | 67 | 341 | 1,406 | 13,232 | 11,470 | | Juil |

Source: Immigration Department/Service de l'Immigration

- Nil or less than half final unit shown / Résultat nul ou inférieur au demi de l'unité indiquée

* there are missing batches with an estimated total of 457 visitors missing, April figures will be revised once the missing flight batches are located.

Table 2 : Visitor Arrivals by Purpose of Visit
Tableau 2 : Arrivées de visiteurs selon le motif du voyage

| Year | Month | VISITORS/VISITEURS | | | | | | Total Visitors | Année | Mois |
|------|-------|--------------------|--------------------------------------|-------------------------------------|-----------|------------------------------|------------------|-------------------|-------|------|
| | | Holidays | Visiting Friends and relatives | Business, Meetings/ Conferences | Stop Over | Others, Education, sports | | | | |
| | | Vacances | Visite à des amis et à la famille | Affaires, réunions ou conférence | Escale | Autres, education, sport | Visiteurs global | | | |
| 2010 | | 80,681 | 6,079 | 9,615 | 692 | 113 | 97,180 | 2010 | | |
| 2011 | | 75,821 | 7,320 | 9,933 | 790 | 96 | 93,960 | 2011 | | |
| 2012 | | 88,085 | 7,910 | 11,294 | 602 | 270 | 108,161 | 2012 | | |
| 2013 | | 89,253 | 7,755 | 9,079 | 613 | 3,409 | 110,109 | 2013 | | |
| 2010 | Jul | 8,600 | 912 | 996 | 69 | 17 | 10,594 | 2010 | Juil | |
| 2011 | Jul | 8,799 | 914 | 912 | 87 | 17 | 10,729 | 2011 | Juil | |
| 2012 | Jul | 9,877 | 863 | 992 | 32 | 6 | 11,770 | 2012 | Juil | |
| | Aug | 8,776 | 638 | 929 | 55 | 7 | 10,405 | | Aoû | |
| | Sep | 10,089 | 640 | 1,350 | 58 | 45 | 12,182 | | Sep | |
| | Oct | 8,071 | 586 | 1,192 | 43 | 30 | 9,922 | | Oct | |
| | Nov | 6,152 | 491 | 980 | 59 | 22 | 7,704 | | Nov | |
| | Dec | 8,989 | 1,204 | 803 | 26 | 48 | 11,070 | | Dec | |
| 2013 | Jan | 6,315 | 596 | 638 | 63 | - | 7,612 | 2013 | Jan | |
| | Feb | 3,431 | 437 | 856 | 16 | 191 | 4,931 | | Fév | |
| | Mar | 5,557 | 594 | 645 | 57 | 124 | 6,977 | | Mar | |
| | Apr | 6,874 | 558 | 937 | 28 | 265 | 8,662 | | Avr | |
| | May | 6,029 | 565 | 800 | 33 | 243 | 7,670 | | Mai | |
| | June | 9,152 | 723 | 775 | 62 | 494 | 11,206 | | Juin | |
| | July | 9,819 | 853 | 582 | 89 | 512 | 11,855 | | Juil | |
| | Aug | 8,678 | 767 | 1,001 | 59 | 292 | 10,797 | | Aoû | |
| | Sep | 9,814 | 567 | 847 | 70 | 298 | 11,596 | | Sep | |
| | Oct | 8,806 | 705 | 849 | 82 | 385 | 10,827 | | Oct | |
| | Nov | 6,389 | 566 | 757 | 36 | 375 | 8,123 | | Nov | |
| | Dec | 8,389 | 824 | 392 | 18 | 230 | 9,853 | | Dec | |
| 2014 | Jan | 7,317 | 544 | 335 | 63 | 188 | 8,447 | 2014 | Jan | |
| | Feb | 3,773 | 407 | 462 | 47 | 320 | 5,009 | | Fév | |
| | Mar | 4,906 | 406 | 628 | 35 | 401 | 6,376 | | Mar | |
| | Apr* | 5,593 | 406 | 640 | 11 | 154 | 6,804 | | Avr | |
| | May | 6,213 | 534 | 776 | 22 | 267 | 7,812 | | Mai | |
| | June | 8,865 | 744 | 880 | 52 | 376 | 10,917 | | Juin | |
| | July | 9,423 | 830 | 578 | 121 | 494 | 11,446 | | Juil | |

Source: Immigration Department/Service de l'Immigration

- Nil or less than half final unit shown / résultat nul ou inférieur au demi de l'unité indiquée

Table 3 : Visitor Arrivals by Usual Country of Residence
Tableau 3 : Arrivées des visiteurs par pays de résidence habituelle

| Year | Month | Australia | New Zealand | New Caledonia | Other Pacific Countries | Europe | North America | Japan | Other Countries | TOTAL | Année | Mois |
|------|-------|-----------|------------------|--------------------|--------------------------|--------|------------------|-------|-----------------|---------|-------|------|
| | | Australie | Nouvelle-Zélande | Nouvelle-Calédonie | Autres Pays du Pacifique | | Amérique du Nord | Japon | Autres pays | | | |
| 2010 | | 58,760 | 11,927 | 11,410 | 4,719 | 4,888 | 2,395 | 517 | 2,564 | 97,180 | 2010 | |
| 2011 | | 57,843 | 11,399 | 11,376 | 3,397 | 5,265 | 1,922 | 630 | 2,128 | 93,960 | 2011 | |
| 2012 | | 65,405 | 14,430 | 13,138 | 4,313 | 5,491 | 2,094 | 705 | 2,585 | 108,161 | 2012 | |
| 2013 | | 65,776 | 15,068 | 12,515 | 4,874 | 5,544 | 2,614 | 659 | 3,059 | 110,109 | 2013 | |
| 2010 | Jul | 6,283 | 1,657 | 1,173 | 346 | 615 | 247 | 41 | 232 | 10,594 | 2010 | Juil |
| 2011 | Jul | 6,222 | 2,000 | 1,151 | 320 | 540 | 214 | 75 | 207 | 10,729 | 2011 | Juil |
| 2012 | Jul | 6,937 | 2,032 | 1,188 | 433 | 633 | 216 | 95 | 236 | 11,770 | 2012 | Juil |
| | Aug | 6,043 | 2,049 | 928 | 298 | 646 | 181 | 58 | 202 | 10,405 | | Aoû |
| | Sep | 7,640 | 1,827 | 1,227 | 451 | 462 | 231 | 59 | 285 | 12,182 | | Sep |
| | Oct | 5,960 | 1,505 | 1,072 | 334 | 576 | 216 | 41 | 218 | 9,922 | | Oct |
| | Nov | 4,622 | 790 | 1,071 | 293 | 505 | 156 | 55 | 212 | 7,704 | | Nov |
| | Dec | 6,833 | 1,126 | 1,758 | 543 | 361 | 173 | 68 | 208 | 11,070 | | Dec |
| 2013 | Jan | 4,591 | 621 | 1,428 | 231 | 364 | 135 | 32 | 210 | 7,612 | 2013 | Jan |
| | Feb | 2,448 | 429 | 876 | 440 | 340 | 154 | 26 | 218 | 4,931 | | Fév |
| | Mar | 4,405 | 718 | 720 | 344 | 388 | 135 | 36 | 231 | 6,977 | | Mar |
| | Apr | 4,931 | 994 | 1,126 | 522 | 533 | 222 | 58 | 276 | 8,662 | | Avr |
| | May | 4,669 | 959 | 971 | 293 | 374 | 165 | 62 | 177 | 7,670 | | Mai |
| | June | 6,911 | 1,901 | 971 | 461 | 419 | 279 | 39 | 225 | 11,206 | | Juin |
| | July | 7,091 | 2,319 | 805 | 384 | 654 | 217 | 47 | 338 | 11,855 | | Juil |
| | Aug | 5,781 | 2,121 | 1,167 | 444 | 672 | 245 | 88 | 279 | 10,797 | | Aoû |
| | Sep | 7,660 | 1,664 | 790 | 458 | 399 | 269 | 67 | 289 | 11,596 | | Sep |
| | Oct | 6,431 | 1,614 | 1,196 | 418 | 523 | 311 | 65 | 269 | 10,827 | | Oct |
| | Nov | 4,735 | 830 | 1,107 | 413 | 448 | 239 | 86 | 265 | 8,123 | | Nov |
| | Dec | 6,123 | 898 | 1,358 | 466 | 430 | 243 | 53 | 282 | 9,853 | | Dec |
| 2014 | Jan | 4,898 | 679 | 1,676 | 284 | 414 | 188 | 42 | 266 | 8,447 | 2014 | Jan |
| | Feb | 2,608 | 310 | 968 | 357 | 304 | 207 | 33 | 222 | 5,009 | | Fév |
| | Mar | 3,907 | 707 | 538 | 462 | 360 | 146 | 48 | 208 | 6,376 | | Mar |
| | Apr* | 4,125 | 984 | 732 | 265 | 368 | 108 | 21 | 201 | 6,804 | | Avr |
| | May | 4,162 | 1,350 | 911 | 369 | 404 | 215 | 72 | 329 | 7,812 | | Mai |
| | June | 6,123 | 1,936 | 1,191 | 411 | 453 | 306 | 82 | 415 | 10,917 | | Juin |
| | July | 6,295 | 2,513 | 975 | 526 | 544 | 198 | 61 | 334 | 11,446 | | Juil |

Source: Immigration Department / Service de l'Immigration

Table 4 : Overseas Arrivals of Residents by Nationality**Tableau 4 : Arrivées des résidents par nationalité**

| Year | Month | Ni-Vanuatu | Australian Australien | French Français | British Anglais | New Zealander Néo- Zélandais | Asian Asiatiques | Pacific Islanders Autres pays du Pacifique | North Americans Américain du Nord | Other countries Autres pays | TOTAL | Année | Mois |
|------|-------|------------|--------------------------|--------------------|--------------------|---------------------------------------|---------------------|---|--|--------------------------------------|--------|-------|------|
| 2010 | | 11,794 | 3,700 | 1,894 | 132 | 1,436 | 504 | 768 | 496 | 330 | 21,053 | 2010 | |
| 2011 | | 12,508 | 3,867 | 1,802 | 244 | 1,370 | 719 | 1,090 | 352 | 321 | 22,273 | 2011 | |
| 2012 | | 14,317 | 3,629 | 1,526 | 203 | 1,236 | 696 | 686 | 370 | 295 | 22,958 | 2012 | |
| 2013 | | 15,410 | 4,096 | 1,782 | 167 | 1,293 | 915 | 1,007 | 566 | 375 | 25,611 | 2013 | |
| 2010 | Jul | 846 | 347 | 186 | 20 | 127 | 63 | 167 | 28 | 31 | 1,815 | 2010 | Juil |
| 2011 | Jul | 894 | 340 | 168 | 22 | 113 | 81 | 182 | 28 | 38 | 1,866 | 2011 | Juil |
| 2012 | Jul | 1,155 | 288 | 185 | 21 | 94 | 44 | 50 | 37 | 16 | 1,890 | 2012 | Juil |
| | Aug | 814 | 282 | 105 | 18 | 90 | 51 | 47 | 41 | 31 | 1,479 | | Aoû |
| | Sep | 1,650 | 283 | 98 | 11 | 109 | 57 | 44 | 30 | 30 | 2,312 | | Sep |
| | Oct | 948 | 378 | 137 | 15 | 86 | 62 | 61 | 24 | 35 | 1,746 | | Oct |
| | Nov | 1,442 | 304 | 146 | 18 | 99 | 36 | 56 | 35 | 31 | 2,167 | | Nov |
| | Dec | 1,690 | 337 | 110 | 18 | 115 | 66 | 64 | 43 | 26 | 2,469 | | Dec |
| 2013 | Jan | 983 | 391 | 236 | 18 | 158 | 73 | 116 | 51 | 35 | 2,061 | 2013 | Jan |
| | Feb | 688 | 270 | 93 | 12 | 84 | 62 | 87 | 26 | 32 | 1,354 | | Fév |
| | Mar | 915 | 322 | 124 | 16 | 120 | 74 | 63 | 33 | 29 | 1,696 | | Mar |
| | Apr | 1,259 | 352 | 160 | 21 | 114 | 63 | 56 | 30 | 28 | 2,083 | | Avr |
| | May | 1,559 | 297 | 110 | 17 | 99 | 70 | 48 | 34 | 40 | 2,274 | | Mai |
| | June | 1,386 | 353 | 153 | 31 | 124 | 94 | 83 | 44 | 27 | 2,295 | | Juin |
| | July | 1,074 | 390 | 162 | 33 | 112 | 75 | 192 | 41 | 38 | 2,117 | | Juil |
| | Aug | 1,014 | 302 | 138 | 5 | 90 | 75 | 67 | 56 | 30 | 1,777 | | Aoû |
| | Sep | 2,026 | 341 | 130 | 1 | 80 | 90 | 78 | 66 | 37 | 2,849 | | Sep |
| | Oct | 863 | 386 | 184 | 1 | 93 | 92 | 64 | 64 | 26 | 1,773 | | Oct |
| | Nov | 1,692 | 382 | 153 | 1 | 102 | 87 | 75 | 66 | 24 | 2,582 | | Nov |
| | Dec | 1,951 | 310 | 139 | 11 | 117 | 60 | 78 | 55 | 29 | 2,750 | | Dec |
| 2014 | Jan | 1,071 | 456 | 230 | 4 | 144 | 88 | 195 | 109 | 31 | 2,328 | 2014 | Jan |
| | Feb | 678 | 319 | 176 | 1 | 100 | 75 | 98 | 67 | 26 | 1,540 | | Fév |
| | Mar | 864 | 383 | 139 | 12 | 125 | 76 | 84 | 37 | 39 | 1,759 | | Mar |
| | Apr | 1,149 | 294 | 111 | 8 | 88 | 56 | 63 | 36 | 24 | 1,829 | | Avr |
| | May | 1,472 | 330 | 123 | 9 | 102 | 97 | 99 | 51 | 40 | 2,323 | | Mai |
| | June | 1,312 | 353 | 164 | 15 | 114 | 65 | 80 | 55 | 34 | 2,192 | | Juin |
| | July | 1,185 | 350 | 135 | 10 | 99 | 100 | 121 | 57 | 29 | 2,086 | | Juil |

Source: Immigration Department / Service de l'Immigration

Table 5 : Visitors Arriving by Air Intended Length of Stay***Tableau 5 : Arrivée des Visiteurs à longue durée de Séjour**

| Year | Month | AVERAGE INTENDED LENGTH OF STAY / LA MOYENNE DE LONGUE DUREE DE SEJOUR | | | Année | Mois |
|------|-------|---|------------|---------|-------|------|
| | | Port Vila | Luganville | Vanuatu | | |
| 2010 | | 9.5 | 10.9 | 10.2 | 2010 | |
| 2011 | | 8.9 | 10.9 | 9.9 | 2011 | |
| 2012 | | 9.8 | 11.1 | 10.5 | 2012 | |
| 2013 | | 10.8 | 11.9 | 11.4 | 2013 | |
| 2010 | Jul | 9.1 | 11.4 | 10.3 | 2010 | Juil |
| 2011 | Jul | 9.0 | 10.4 | 9.7 | 2011 | Juil |
| 2012 | Jul | 11.4 | 11.5 | 11.5 | 2012 | Juil |
| | Aug | 10.4 | 10.5 | 10.5 | | Aoû |
| | Sep | 9.5 | 11.0 | 10.3 | | Sep |
| | Oct | 10.4 | 10.5 | 10.5 | | Oct |
| | Nov | 8.9 | 9.0 | 9.0 | | Nov |
| | Dec | 8.9 | 12.7 | 10.8 | | Dec |
| 2013 | Jan | 11.6 | 11.2 | 11.4 | 2013 | Jan |
| | Feb | 15.6 | 9.4 | 12.5 | | Fév |
| | Mar | 10.1 | 11.2 | 10.6 | | Mar |
| | Apr | 10.7 | 10.8 | 10.8 | | Avr |
| | May | 9.5 | 12.6 | 11.0 | | Mai |
| | June | 9.2 | 11.7 | 10.4 | | Juin |
| | July | 10.0 | 12.0 | 11.0 | | Juil |
| | Aug | 9.5 | 13.2 | 11.3 | | Aoû |
| | Sep | 9.0 | 12.8 | 10.9 | | Sep |
| | Oct | 15.7 | 10.6 | 13.1 | | Oct |
| | Nov | 8.0 | 11.8 | 9.9 | | Nov |
| | Dec | 11.1 | 12.2 | 11.6 | | Dec |
| 2014 | Jan | 10.4 | 13.6 | 12.0 | 2014 | Jan |
| | Feb | 13.1 | 16.7 | 14.9 | | Fév |
| | Mar | 9.9 | 9.0 | 9.5 | | Mar |
| | Apr* | 9.0 | 10.8 | 9.9 | | Avr |
| | May | 8.8 | 13.1 | 11.0 | | Mai |
| | June | 9.2 | 10.9 | 10.0 | | Juin |
| | July | 9.9 | 13.1 | 11.5 | | Juil |

Source: Immigration Department/Service de l'Immigration

* there are missing batches with an estimated total of 457 visitors missing, April figures will be revised once the missing flight batches are located.

Table 6 : Visitors Arriving by Air Average Age
Tableau 6 : Arrivée des Visiteurs par Age moyen

| Year | Month | AVERAGE AGE OF VISITORS / L'AGE MOYEN DES VISITEURS | | | Année | Mois |
|------|-------|---|------------|---------|-------|------|
| | | Port Vila | Luganville | Vanuatu | | |
| 2010 | Jul | 40.2 | 40.4 | 40.3 | 2010 | Juil |
| 2011 | Jul | 38.3 | 41.5 | 39.9 | 2011 | Juil |
| 2012 | Jul | 38.4 | 41.0 | 39.7 | 2012 | Juil |
| | Aug | 41.5 | 46.5 | 44.0 | | Aoû |
| | Sep | 36.5 | 38.3 | 37.4 | | Sep |
| | Oct | 41.5 | 46.5 | 44.0 | | Oct |
| | Nov | 36.6 | 41.6 | 39.1 | | Nov |
| | Dec | 36.6 | 36.9 | 36.8 | | Dec |
| 2013 | Jan | 35.4 | 44.2 | 39.8 | 2013 | Jan |
| | Feb | 32.0 | 46.4 | 39.2 | | Fév |
| | Mar | 37.0 | 41.5 | 39.2 | | Mar |
| | Apr | 38.1 | 34.4 | 36.2 | | Avr |
| | May | 41.7 | 46.7 | 44.2 | | Mai |
| | June | 37.0 | 37.5 | 37.2 | | Juin |
| | July | 34.6 | 41.5 | 38.0 | | Juil |
| | Aug | 38.1 | 43.7 | 40.9 | | Aoû |
| | Sep | 35.9 | 39.2 | 37.6 | | Sep |
| | Oct | 34.1 | 31.9 | 33.0 | | Oct |
| | Nov | 32.5 | 38.7 | 35.6 | | Nov |
| | Dec | 29.8 | 33.6 | 31.7 | | Dec |
| 2014 | Jan | 35.1 | 32.4 | 33.7 | 2014 | Jan |
| | Feb | 44.8 | 38.9 | 41.9 | | Fév |
| | Mar | 40.1 | 46.9 | 43.5 | | Mar |
| | Apr* | 37.3 | 40.8 | 39.0 | | Avr |
| | May | 41.8 | 44.3 | 43.1 | | Mai |
| | June | 38.6 | 38.3 | 38.4 | | Juin |
| | July | 37.9 | 41.2 | 39.6 | | Juil |

Source: Immigration Department/Service de l'Immigration

* there are missing batches with an estimated total of 457 visitors missing, April figures will be revised once the missing flight batches are located.