

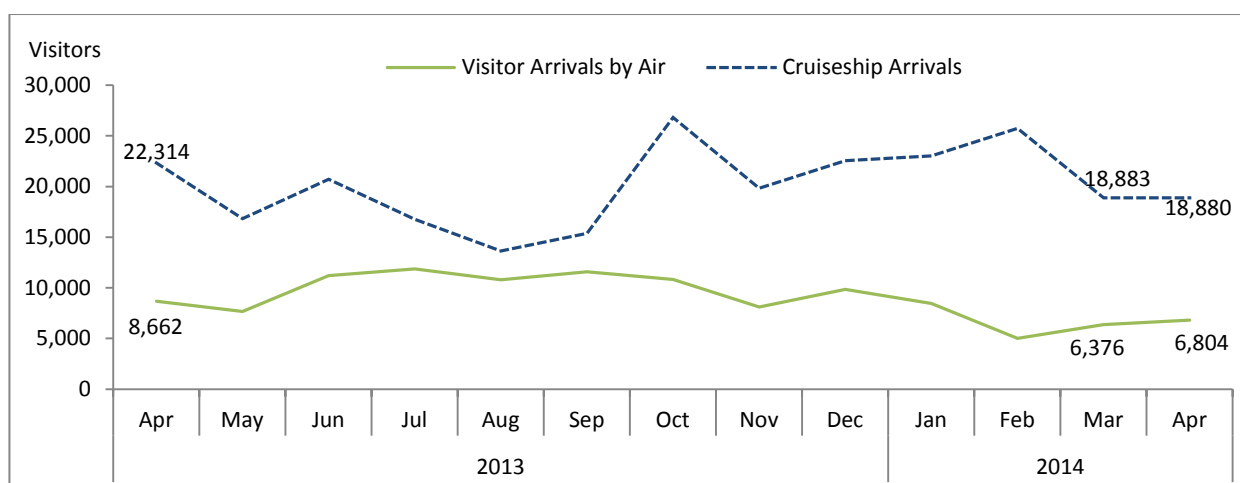


STATISTICS UPDATE: INTERNATIONAL ARRIVAL STATISTICS

APRIL 2014 HIGHLIGHTS

OVERVIEW

Figure 1: Air* and Day visitors: April 2013 to April 2014



***Air visitors includes yacht visitors**

- International visitor ¹ arrivals by air in April 2014 accounted for 26% of total international arrivals to Vanuatu. Visitor arrivals declined over the corresponding month of 2013; however visitors increased over the previous month.
- Air visitor arrivals in April 2014 declined by 21% over April 2013. This decrease was attributed by a decline in arrivals for holiday visitors. However visitor figures increased by 7% when compared to the previous month of March 2014.
- Cruise ship visitors or day visitors declined by 15% over April 2013, falling from 22,314 visitors in April 2013 to 18,880 day visitors in April 2014. This decrease was due to a fall in Cruise ship vessels from 13 in April 2013 to 9 cruise ships in April 2014. Cruise ship or day visitors continue to make up the most visitors to Vanuatu accounting for 74% of total visitor arrivals.

CONTENTS

	Page #
HIGHLIGHTS	1-4
TABLES:	
1: Summary of Overseas migration	5
2: Visitors by Purpose of Visit	6
3: Visitors by Country of Usual Residence	7
4: Resident arrivals by Nationality	8
5: Visitors by air, Intended length of stay	9
6: Visitors by air, Average age	10

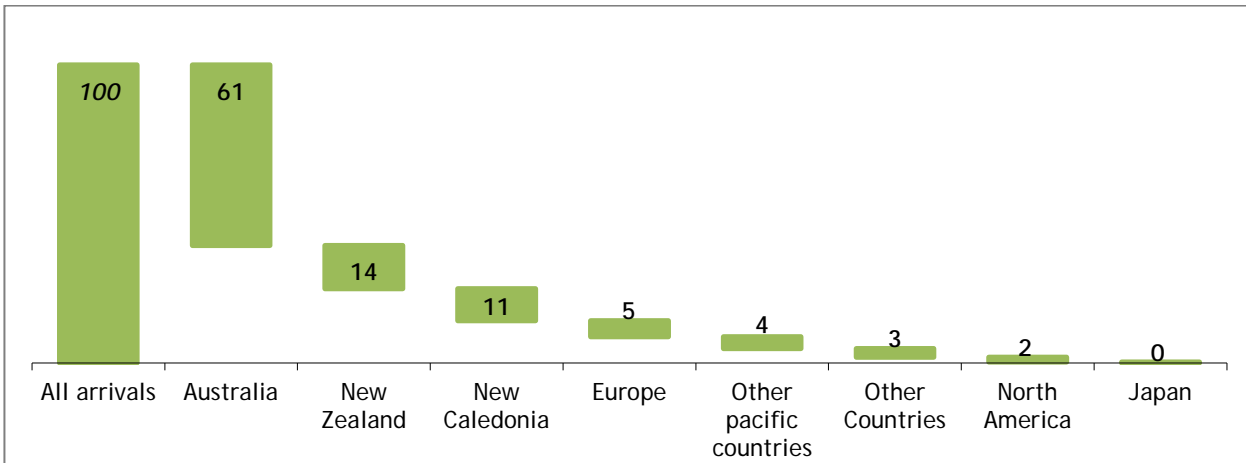
¹ Includes visitor arrivals by Yachts

PURPOSE OF VISIT FOR VISITORS ARRIVING BY AIR

- Holiday visitors in April 2014 contributed 82% of total visitors arriving by air. Visitors arriving for business, meetings or conferences make up 9%, visitors visiting friends and families make up 6% and visitors arriving for other purposes, education and sports at 2%.

COUNTRY OF USUAL RESIDENCE FOR VISITORS ARRIVING BY AIR

Fig 2: Percentage Share of visitors in April 2014 by Country of Usual Residence

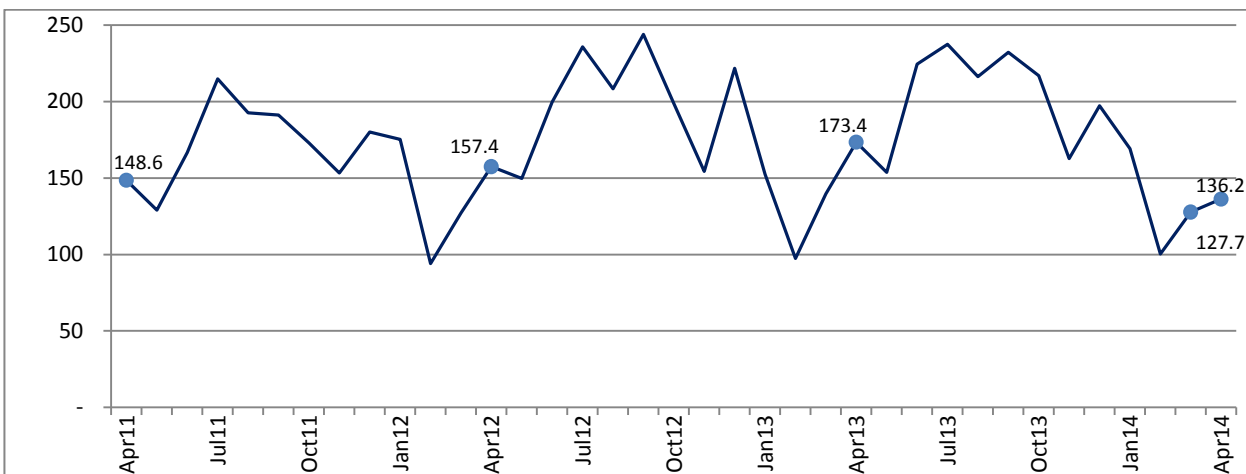


- Australian visitors continue to dominate the number of visitors arriving by air to Vanuatu contributing 61%, New Zealand at 14%, New Caledonia at 11%, Europe at 5%, Other pacific countries at 4%, other countries at 3% and North America at 2%

VISITOR ARRIVAL INDEX

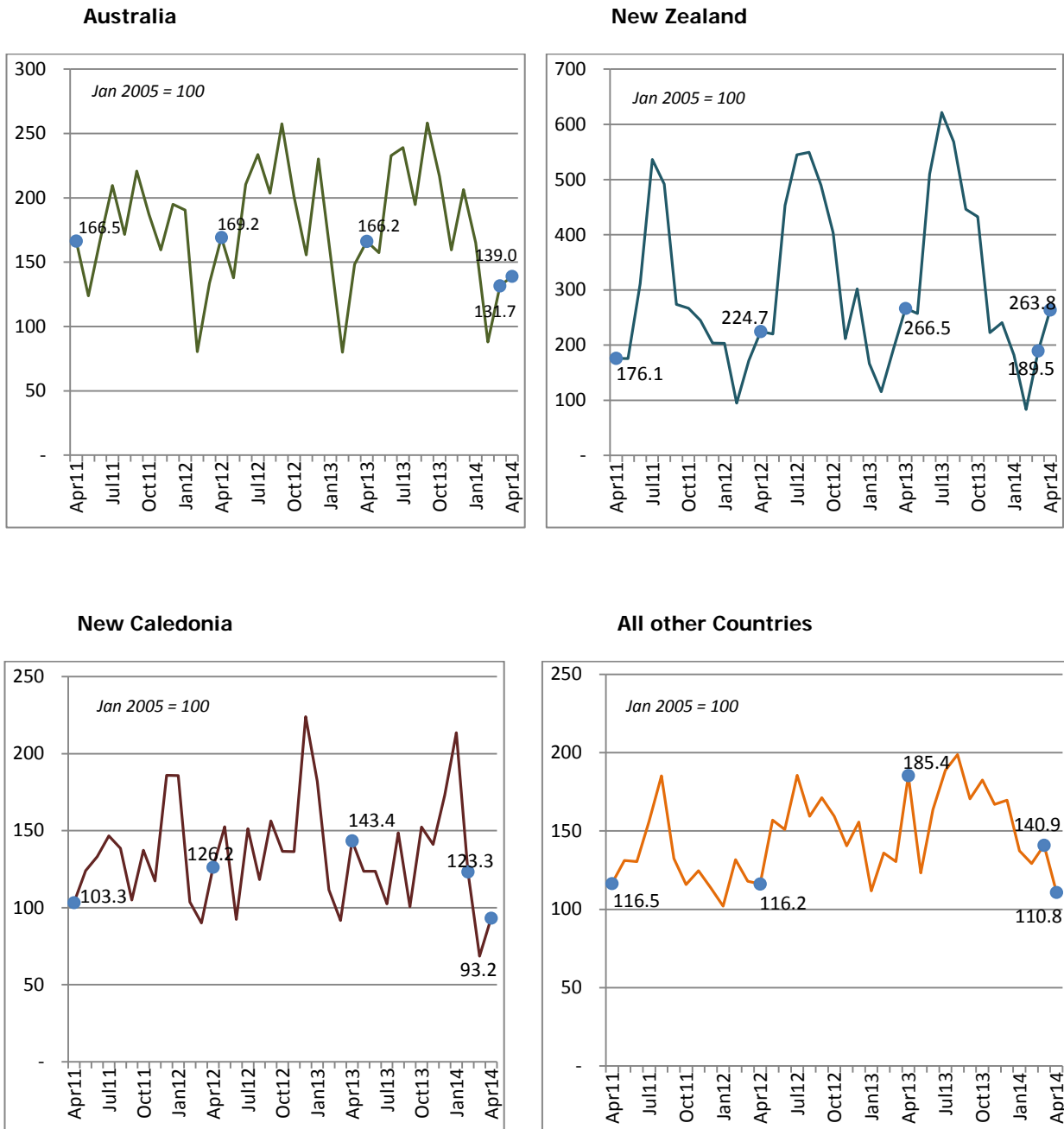
- Tourism in Vanuatu is seasonal, and it is difficult to analyse changes in international arrivals and country of residence by looking at the monthly number of arrivals. Figure 3 below, shows the total number of visitor arrivals and arrivals from Australia, New Zealand, New Caledonia and all other countries combined to show trends in arrivals, with the number of visitors based on an index value of 100 in January 2005. This index allows analysis over time of the real increases and decreases in international air arrivals.

Fig 3: Index of Total Air Visitor Arrivals, April 2011 to April 2014 (January 2005 = 100)



- In April 2014, total visitor arrivals by air showed decreasing trends in index values at (-21%) over April 2013. (Figure 4)

Figure 4: Index of Visitor Arrivals and Country of Usual Residence, April 2011 to April 2014 (January 2005 = 100)



Note: the vertical axis scale varies in each country chart.

- The three major tourism markets of New Caledonia, Australia and New Zealand showed decreases in index values of (-35%), (-16%) and (-1%) respectively when compared to the same month of the previous year.

AVERAGE INTENDED LENGTH OF STAY FOR VISITORS ARRIVING BY AIR

- In April 2014, visitors arriving by air recorded an average intended length of stay 9.9 days, a decrease of 0.8 days over April 2013, and average intended length of stay however increased by 0.5 days over the previous month.

AVERAGE AGE FOR VISITORS ARRIVING BY AIR

- The visitors' age in April 2014 stood at an average of 39 years, an increase of 3 years over April 2013, however visitors' age declined over the previous month by 5 years.

NEXT UPDATE (MONTHLY)

RELEASE DATE

May

12th September 2014

PROVINCIAL STATISTICS OFFICES

PO Box 22
Lakatoro, Malekula
MALAMPA PROVINCE

Commercial Center
Lenakel, Tanna
TAFEA PROVINCE

PO Box 8
Saratamata, Ambae
PENAMA PROVINCE

Sola, Vanua Lava
Banks group
TORBA PROVINCE

DATA SOURCE

All International arrival statistics by air provided in the report is sourced from complete Arrival and Departure cards at the Department of Immigration. Cruise ship figures are also sourced from the Department of Immigration.



Simil Johnson
Government Statistician

Table 1 : Summary of Overseas Migration*
Tableau 1 : Résumé des échanges migratoires avec l'extérieur

Year	Month	ARRIVALS / ARRIVEES						DEPARTURES / DEPARTURES						Cruiseship Arrivals/ Croisiéristes	Année	Mois
		PORT VILA		LUGANVILLE		TOTAL		PORT VILA		LUGANVILLE		TOTAL				
		Residents Résidents	Visitors Visiteurs	Residents Résidents	Visitors Visiteurs	Residents Résidents	Visitors Visiteurs	Resident Résidents	Visitor Visiteurs	Resident Résidents	Visitors Visiteurs	Resident Résidents	Visitors Visiteurs			
2010		20,531	94,909	522	2,271	21,053	97,180	13,133	104,573	188	1,999	13,321	106,572	140,468	2010	
2011		21,752	91,107	521	2,853	22,273	93,960	12,958	96,836	156	1,954	13,114	98,790	154,938	2011	
2012		22,594	105,611	364	2,550	22,958	108,161	14,803	113,158	134	2,339	14,937	115,497	213,243	2012	
2013		25,116	106,466	495	3,643	25,611	110,109	16,380	118,753	164	3,496	16,544	122,249	249,727	2013	
2010	Apr	1,437	6,481	42	140	1,479	6,621	849	7,184	10	73	859	7,257	12,775	2010	Avr
2011	Apr	1,635	7,183	44	236	1,679	7,419	899	7,722	12	141	911	7,863	15,725	2011	Apr
2012	Apr	1,793	7,637	49	223	1,842	7,860	998	8,888	4	204	1,002	9,092	15,177	2012	Avr
	May	2,098	7,401	8	73	2,106	7,474	1,135	7,156	-	-	1,135	7,156	17,684		Mai
	Jun	1,746	9,808	8	168	1,754	9,976	1,000	9,072	-	27	1,000	9,099	12,972		Juin
	Jul	1,869	11,471	21	299	1,890	11,770	995	12,740	14	337	1,009	13,077	18,595		Juil
	Aug	1,448	10,154	31	251	1,479	10,405	975	10,726	10	215	985	10,941	9,581		Aoû
	Sep	2,288	11,887	24	295	2,312	12,182	1,013	12,192	15	251	1,028	12,443	15,104		Sep
	Oct	1,717	9,663	29	259	1,746	9,922	1,535	11,688	11	282	1,546	11,970	26,644		Oct
	Nov	2,118	7,431	49	273	2,167	7,704	1,593	8,852	15	230	1,608	9,082	16,697		Nov
	Dec	2,420	10,774	49	296	2,469	11,070	1,348	9,365	28	317	1,376	9,682	17,188		Dec
2013	Jan	1,997	7,415	64	197	2,061	7,612	1,331	11,574	23	325	1,354	11,899	33,491	2013	Jan
	Feb	1,333	4,809	21	122	1,354	4,931	1,919	5,497	14	137	1,933	5,634	16,127		Fév
	Mar	1,656	6,825	40	152	1,696	6,977	1,465	6,799	2	155	1,467	6,954	16,060		Mar
	Apr	2,033	8,182	50	480	2,083	8,662	1,119	9,347	18	399	1,137	9,746	22,314		Avr
	May	2,222	7,327	52	343	2,274	7,670	1,337	8,232	21	302	1,358	8,534	19,248		Mai
	June	2,250	10,806	45	400	2,295	11,206	1,160	10,307	11	427	1,171	10,734	27,524		Juin
	July	2,073	11,390	44	465	2,117	11,855	1,057	12,901	9	412	1,066	13,313	16,759		Juil
	Aug	1,769	10,682	8	115	1,777	10,797	1,265	11,793	2	142	1,267	11,935	13,642		Aoû
	Sep	2,823	11,340	26	256	2,849	11,596	1,073	11,442	20	284	1,093	11,726	15,370		Sep
	Oct	1,739	10,392	34	435	1,773	10,827	928	12,254	10	455	938	12,709	26,805		Oct
	Nov	2,539	7,825	43	298	2,582	8,123	2,070	9,887	17	229	2,087	10,116	19,834		Nov
	Dec	2,682	9,473	68	380	2,750	9,853	1,656	8,720	17	229	1,673	8,949	22,553		Dec
2014	Jan	2,303	8,288	25	159	2,328	8,447	1,393	11,871	10	252	1,403	12,123	23,016	2014	Jan
	Feb	1,491	4,878	49	131	1,540	5,009	2,051	5,763	7	85	2,058	5,848	25,728		Fév
	Mar	1,693	6,169	66	207	1,759	6,376	1,149	7,047	7	208	1,156	7,255	18,883		Mar
	Apr	1,753	6,433	76	371	1,829	6,804	3,172	7,089	5	351	3,177	7,440	18,880		Avr

Source: Immigration Department/Service de l'Immigration

- Nil or less than half final unit shown / Résultat nul ou inférieur au demi de l'unité indiquée

* there are missing batches with an estimated total of 457 visitors missing. April figures will be revised once the missing flight batches are located.

Table 2 : Visitor Arrivals by Purpose of Visit*
Tableau 2 : Arrivées de visiteurs selon le motif du voyage

Year	Month	VISITORS/VISITEURS							Année	Mois
		Holidays	Visiting Friends and relatives	Business, Meetings/ Conferences	Stop Over	Others, Education, sports	Total Visitors			
		Vacances	Visite à des amis et à la famille	Affaires, réunions ou conférence	Escale	Autres, education, sport	Visiteurs global			
2010		80,681	6,079	9,615	692	113	97,180	2010		
2011		75,821	7,320	9,933	790	96	93,960	2011		
2012		88,085	7,910	11,294	602	270	108,161	2012		
2013		89,253	7,755	9,079	613	3,409	110,109	2013		
2010	Apr	5,441	349	784	44	3	6,621	2010	Avr	
2011	Apr	6,082	527	742	68	-	7,419	2011	Avr	
2012	Apr	6,596	546	674	29	15	7,860	2012	Avr	
	May	5,928	513	984	34	15	7,474		Mai	
	Jun	7,946	601	1,254	171	4	9,976		Juin	
	Jul	9,877	863	992	32	6	11,770		Juil	
	Aug	8,776	638	929	55	7	10,405		Aoû	
	Sep	10,089	640	1,350	58	45	12,182		Sep	
	Oct	8,071	586	1,192	43	30	9,922		Oct	
	Nov	6,152	491	980	59	22	7,704		Nov	
	Dec	8,989	1,204	803	26	48	11,070		Dec	
2013	Jan	6,315	596	638	63	-	7,612	2013	Jan	
	Feb	3,431	437	856	16	191	4,931		Fév	
	Mar	5,557	594	645	57	124	6,977		Mar	
	Apr	6,874	558	937	28	265	8,662		Avr	
	May	6,029	565	800	33	243	7,670		Mai	
	June	9,152	723	775	62	494	11,206		Juin	
	July	9,819	853	582	89	512	11,855		Juil	
	Aug	8,678	767	1,001	59	292	10,797		Aoû	
	Sep	9,814	567	847	70	298	11,596		Sep	
	Oct	8,806	705	849	82	385	10,827		Oct	
	Nov	6,389	566	757	36	375	8,123		Nov	
	Dec	8,389	824	392	18	230	9,853		Dec	
2014	Jan	7,317	544	335	63	188	8,447	2014	Jan	
	Feb	3,773	407	462	47	320	5,009		Fév	
	Mar	4,906	406	628	35	401	6,376		Mar	
	Apr	5,593	406	640	11	154	6,804		Avr	

Source: Immigration Department/Service de l'Immigration

- Nil or less than half final unit shown / résultat nul ou inférieur au demi de l'unité indiquée

* there are missing batches with an estimated total of 457 visitors missing. April figures will be revised once the missing flight batches are located.

Table 3 : Visitor Arrivals by Usual Country of Residence *

Tableau 3 : Arrivées des visiteurs par pays de résidence habituelle

Year	Month	Australia	New Zealand	New Caledonia	Other Pacific Countries	Europe	North America	Japan	Other Countries	TOTAL	Année	Mois
		Australie	Nouvelle-Zélande	Nouvelle-Calédonie	Autres Pays du Pacifique		Amérique du Nord	Japon	Autres pays			
2010		58,760	11,927	11,410	4,719	4,888	2,395	517	2,564	97,180	2010	
2011		57,843	11,399	11,376	3,397	5,265	1,922	630	2,128	93,960	2011	
2012		65,405	14,430	13,138	4,313	5,491	2,094	705	2,585	108,161	2012	
2013		65,776	15,068	12,515	4,874	5,544	2,614	659	3,059	110,109	2013	
2010	Apr	3,865	851	777	326	341	202	34	225	6,621	2010	Avr
2011	Apr	4,939	657	811	278	390	170	39	135	7,419	2011	Avr
2012	Apr	5,021	838	991	270	335	133	58	214	7,860	2012	Avr
	May	4,091	821	1,198	454	410	219	59	222	7,474		Mai
	Jun	6,248	1,690	726	310	523	203	52	224	9,976		Juin
	Jul	6,937	2,032	1,188	433	633	216	95	236	11,770		Juil
	Aug	6,043	2,049	928	298	646	181	58	202	10,405		Aoû
	Sep	7,640	1,827	1,227	451	462	231	59	285	12,182		Sep
	Oct	5,960	1,505	1,072	334	576	216	41	218	9,922		Oct
	Nov	4,622	790	1,071	293	505	156	55	212	7,704		Nov
	Dec	6,833	1,126	1,758	543	361	173	68	208	11,070		Dec
2013	Jan	4,591	621	1,428	231	364	135	32	210	7,612	2013	Jan
	Feb	2,448	429	876	440	340	154	26	218	4,931		Fév
	Mar	4,405	718	720	344	388	135	36	231	6,977		Mar
	Apr	4,931	994	1,126	522	533	222	58	276	8,662		Avr
	May	4,669	959	971	293	374	165	62	177	7,670		Mai
	June	6,911	1,901	971	461	419	279	39	225	11,206		Juin
	July	7,091	2,319	805	384	654	217	47	338	11,855		Juil
	Aug	5,781	2,121	1,167	444	672	245	88	279	10,797		Aoû
	Sep	7,660	1,664	790	458	399	269	67	289	11,596		Sep
	Oct	6,431	1,614	1,196	418	523	311	65	269	10,827		Oct
	Nov	4,735	830	1,107	413	448	239	86	265	8,123		Nov
	Dec	6,123	898	1,358	466	430	243	53	282	9,853		Dec
2014	Jan	4,898	679	1,676	284	414	188	42	266	8,447	2014	Jan
	Feb	2,608	310	968	357	304	207	33	222	5,009		Fév
	Mar	3,907	707	538	462	360	146	48	208	6,376		Mar
	Apr	4,125	984	732	265	368	108	21	201	6,804		Avr

Source: Immigration Department / Service de l'Immigration

* there are missing batches with an estimated total of 457 visitors missing, April figures will be revised once the missing flight batches are located.

Table 4 : Overseas Arrivals of Residents by Nationality

Tableau 4 : Arrivées des résidents par nationalité

Year	Month	Ni-Vanuatu	Australian Australien	French Français	British Anglais	New Zealander Néo- Zélandais	Asian Asiatiques	Pacific Islanders Autres pays du Pacifique	North Americans Américain du Nord	Other countries Autres pays	TOTAL	Année	Mois
2010		11,794	3,700	1,894	132	1,436	504	768	496	330	21,053	2010	
2011		12,508	3,867	1,802	244	1,370	719	1,090	352	321	22,273	2011	
2012		14,317	3,629	1,526	203	1,236	696	686	370	295	22,958	2012	
2013		15,410	4,096	1,782	167	1,293	915	1,007	566	375	25,611	2013	
2010	Apr	843	289	112	4	108	35	31	43	13	1,479	2010	Avr
2011	Apr	942	304	140	21	123	51	45	27	26	1,679	2011	Avr
2012	Apr	1,112	327	102	15	110	76	41	37	22	1,842	2012	Avr
	May	1,348	330	164	10	107	60	43	27	17	2,106		Mai
	June	1,139	255	97	21	91	69	46	18	18	1,754		Juin
	Jul	1,155	288	185	21	94	44	50	37	16	1,890		Juil
	Aug	814	282	105	18	90	51	47	41	31	1,479		Aoû
	Sep	1,650	283	98	11	109	57	44	30	30	2,312		Sep
	Oct	948	378	137	15	86	62	61	24	35	1,746		Oct
	Nov	1,442	304	146	18	99	36	56	35	31	2,167		Nov
	Dec	1,690	337	110	18	115	66	64	43	26	2,469		Dec
2013	Jan	983	391	236	18	158	73	116	51	35	2,061	2013	Jan
	Feb	688	270	93	12	84	62	87	26	32	1,354		Fév
	Mar	915	322	124	16	120	74	63	33	29	1,696		Mar
	Apr	1,259	352	160	21	114	63	56	30	28	2,083		Avr
	May	1,559	297	110	17	99	70	48	34	40	2,274		Mai
	June	1,386	353	153	31	124	94	83	44	27	2,295		Juin
	July	1,074	390	162	33	112	75	192	41	38	2,117		Juil
	Aug	1,014	302	138	5	90	75	67	56	30	1,777		Aoû
	Sep	2,026	341	130	1	80	90	78	66	37	2,849		Sep
	Oct	863	386	184	1	93	92	64	64	26	1,773		Oct
	Nov	1,692	382	153	1	102	87	75	66	24	2,582		Nov
	Dec	1,951	310	139	11	117	60	78	55	29	2,750		Dec
2014	Jan	1,071	456	230	4	144	88	195	109	31	2,328	2014	Jan
	Feb	678	319	176	1	100	75	98	67	26	1,540		Fév
	Mar	864	383	139	12	125	76	84	37	39	1,759		Mar
	Apr	1,149	294	111	8	88	56	63	36	24	1,829		Avr

Source: Immigration Department / Service de l'Immigration

Table 5 : Visitors Arriving by Air Intended Length of Stay*

Tableau 5 : Arrivée des Visiteurs à longue durée de Séjour

Year	Month	AVERAGE INTENDED LENGTH OF STAY / LA MOYENNE DE LONGUE DUREE DE SEJOUR			Année	Mois
		Port Vila	Luganville	Vanuatu		
2010		9.5	10.9	10.2	2010	
2011		8.9	10.9	9.9	2011	
2012		9.8	11.1	10.5	2012	
2013		10.8	11.8	11.3	2013	
2010	Apr	9.9	8.8	9.4	2010	Avr
2011	Apr	8.2	13.8	11.0	2011	Apr
2012	Apr	9.7	10.8	10.2	2012	Apr
	May	9.8	12.6	11.2		Mai
	Jun	9.5	11.7	10.6		Juin
	Jul	11.4	11.5	11.5		Juil
	Aug	10.4	10.5	10.5		Aoû
	Sep	9.5	11.0	10.3		Sep
	Oct	10.4	10.5	10.5		Oct
	Nov	8.9	9.0	9.0		Nov
	Dec	8.9	12.7	10.8		Dec
2013	Jan	11.6	11.2	11.4	2013	Jan
	Feb	15.6	9.4	12.5		Fév
	Mar	10.1	11.2	10.6		Mar
	Apr	10.7	10.8	10.8		Avr
	May	9.5	12.6	11.0		Mai
	June	9.2	11.7	10.4		Juin
	July	10.0	12.0	11.0		Juil
	Aug	9.5	13.2	11.3		Aoû
	Sep	9.0	12.8	10.9		Sep
	Oct	15.7	10.6	13.1		Oct
	Nov	8.0	11.8	9.9		Nov
	Dec	11.1	12.2	11.6		Dec
2014	Jan	10.4	13.6	12.0	2014	Jan
	Feb	13.1	16.7	14.9		Fév
	Mar	9.9	9.0	9.5		Mar
	Apr	9.0	10.8	9.9		Avr

Source: Immigration Department/Service de l'Immigration

* there are missing batches with an estimated total of 457 visitors missing. April figures will be revised once the missing flight batches are located.

Table 6 : Visitors Arriving by Air Average Age***Tableau 6 : Arrivée des Visiteurs par Age moyen**

Year	Month	AVERAGE AGE OF VISITORS / L'AGE MOYEN DES VISITEURS			Année	Mois
		Port Vila	Luganville	Vanuatu		
2010	Apr	38.6	42.3	40.4	2010	Avr
2011	Apr	37.0	21.9	29.5	2011	Avr
2012	Apr	38.0	42.9	40.5	2012	Avr
	May	39.7	53.3	46.5		Mai
	Jun	37.9	29.7	33.8		Juin
	Jul	38.4	41.0	39.7		Juil
	Aug	41.5	46.5	44.0		Aoû
	Sep	36.5	38.3	37.4		Sep
	Oct	41.5	46.5	44.0		Oct
	Nov	36.6	41.6	39.1		Nov
	Dec	36.6	36.9	36.8		Dec
2013	Jan	35.4	44.2	39.8	2013	Jan
	Feb	32.0	46.4	39.2		Fév
	Mar	37.0	41.5	39.2		Mar
	Apr	38.1	34.4	36.2		Avr
	May	41.7	46.7	44.2		Mai
	June	37.0	37.5	37.2		Juin
	July	34.6	41.5	38.0		Juil
	Aug	38.1	43.7	40.9		Aoû
	Sep	35.9	39.2	37.6		Sep
	Oct	34.1	31.9	33.0		Oct
	Nov	32.5	38.7	35.6		Nov
	Dec	29.8	33.6	31.7		Dec
2014	Jan	35.1	32.4	33.7	2014	Jan
	Feb	44.8	38.9	41.9		Fév
	Mar	40.1	46.9	43.5		Mar
	Apr	37.3	40.8	39.0		Avr

Source: Immigration Department/Service de l'Immigration

* there are missing batches with an estimated total of 457 visitors missing. April figures will be revised once the missing flight batches are located.