



## VANUATU NATIONAL STATISTICS OFFICE

Private Mail Bag 9019  
Ministry of Finance and Economic Management  
Port Vila, Vanuatu  
Ph: +678 22110/22111/33040, Fax: +678 24583  
E-mail: [stats@vanuatu.gov.vu](mailto:stats@vanuatu.gov.vu), Web: [www.vnso.gov.vu](http://www.vnso.gov.vu)  
Facebook: [www.facebook.com/NSOVU](http://www.facebook.com/NSOVU)



# To Whom It May Concern

Date : 4th July 2014

Dear our Valuable User,

## Re: VNSO Monthly and Quarterly release

The National Statistics Office (VNSO) has the pleasure to finally release the monthly and quarterly reports for 2014. The delays caused due changes made to our databases to ensure its efficiency and at the same time incorporating feedback from you on how we should improve the releases to suit your data needs.

We do acknowledge the importance of feedback as it will guide the way we carry out our responsibilities of compiling and dissemination of official data. We are also mindful of the timeliness and quality of the data released; as such it is paramount that proper actions and mechanisms like databases are adjusted accordingly.

The changes you will expect this year include additional tables, additional variables including metadata that you, as a user will have access to in order to better understand the data that we release. We will be incorporating these changes and will be reflected in our next releases.

VNSO do apologize for any inconvenience and would assure you that future releases will better serve your needs.

I thank you for your patience and understanding. Should you have any queries regarding this, please do not hesitate to contact us.

Yours sincerely

Simil Johnson  
Government Statistician  
Vanuatu National Statistics Office



## STATISTICS UPDATE: INTERNATIONAL ARRIVAL STATISTICS

### FEBRUARY 2014 HIGHLIGHTS

#### OVERVIEW

**Figure 1: Air\* and Day visitors: February 2013 to February 2014**



\*Air visitors includes yacht visitors

- In February 2014, international visitor<sup>1</sup> arrivals accounted for 20% of total visitor arrivals to Vanuatu, increasing over the corresponding month in 2013; however figures declined when compared to previous month.
- Visitors arriving by air in February 2014 increased by 30% or 1,487 visitors over the same month in 2013. This was attributed by the slight increase in holiday visitors over the same period in 2013. Air visitors however declined by (-24%) visitors over the previous month of January 2014.
- Cruise ship or day visitors in February 2014 recorded an increase of 60% over the same month in 2013; this increase was due to increase in number of cruise ships from 8 in February 2013 to 13 cruise ships in February 2014. Cruise ship arrivals also increased by 12% over the previous month. Moreover cruise ship visitors continue to make up most of the visitors arriving to Vanuatu accounting for 80% of total visitor arrivals.

#### CONTENTS

	Page #
<b>HIGHLIGHTS</b>	<b>1-4</b>
<b>TABLES:</b>	
<b>1:</b> Summary of Overseas migration	<b>5</b>
<b>2:</b> Visitors by Purpose of Visit	<b>6</b>
<b>3:</b> Visitors by Country of Usual Residence	<b>7</b>
<b>4:</b> Resident arrivals by Nationality	<b>8</b>
<b>5:</b> Visitors by air, Intended length of stay	<b>9</b>
<b>6:</b> Visitors by air, Average age	<b>10</b>

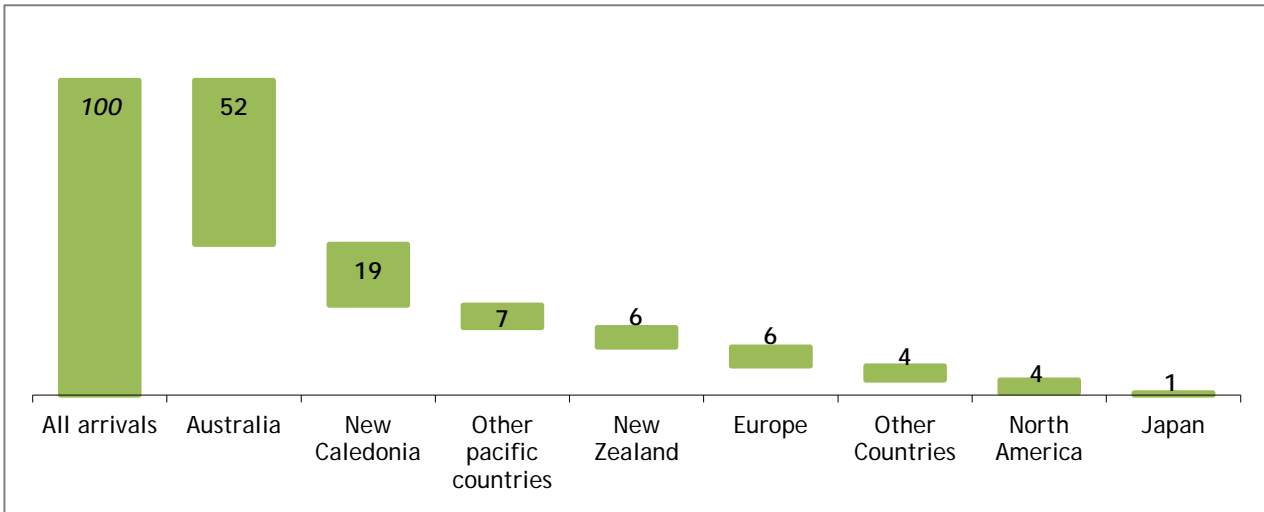
<sup>1</sup> Includes visitor arrivals by yachts

**PURPOSE OF VISIT FOR VISITORS ARRIVING BY AIR**

- International visitors arriving for Holiday purposes in February 2014 contributed 75% of total visitors arriving by air. Visitors arriving for Business, conferences and meetings make up 9%, while visitors arriving to visit friends and families make up 8%, visitors arriving for other purposes, education and sports at 6% and visitors on stop-over at 1%.

**COUNTRY OF USUAL RESIDENCE FOR VISITORS ARRIVING BY AIR**

**Fig 2: Percentage Share of visitors in February 2014 by Country of Usual Residence**

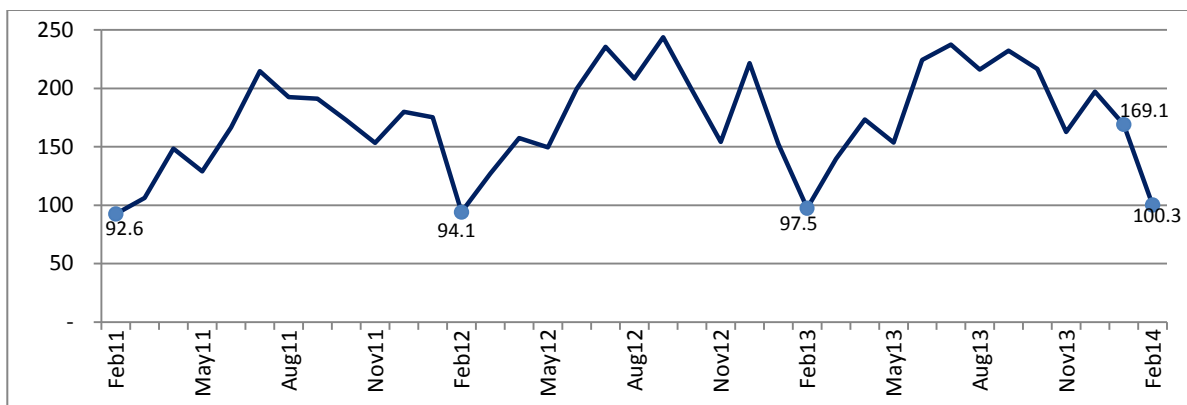


- Visitors arriving from Australia alone make up 52% of the total visitors arriving by air in February 2014, followed by New Caledonia at 19%, Other pacific countries at 7%, New Zealand and Europe at 6%, Other countries and North America at 4% and Japan at 1%.

**VISITOR ARRIVAL INDEX**

- Tourism in Vanuatu is seasonal, and it is difficult to analyse changes in international arrivals and country of residence by looking at the monthly number of arrivals. Figure 3 below, shows the total number of visitor arrivals and arrivals from Australia, New Zealand, New Caledonia and all other countries combined to show trends in arrivals, with the number of visitors based on an index value of 100 in January 2005. This index allows analysis over time of the real increases (figures over 100) and decreases (figures less than 100) in international air arrivals, for example: index value 127 = 27% higher than reference period.

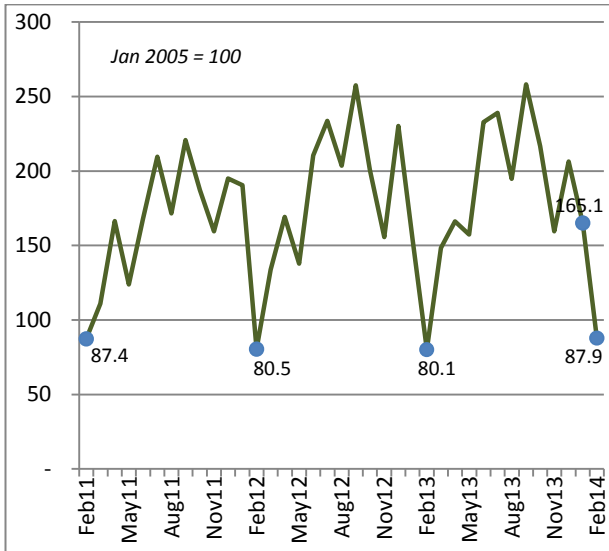
**Figure 3: Index of Total Air Visitor Arrivals, February 2011 to February 2014 (January 2005 = 100)**



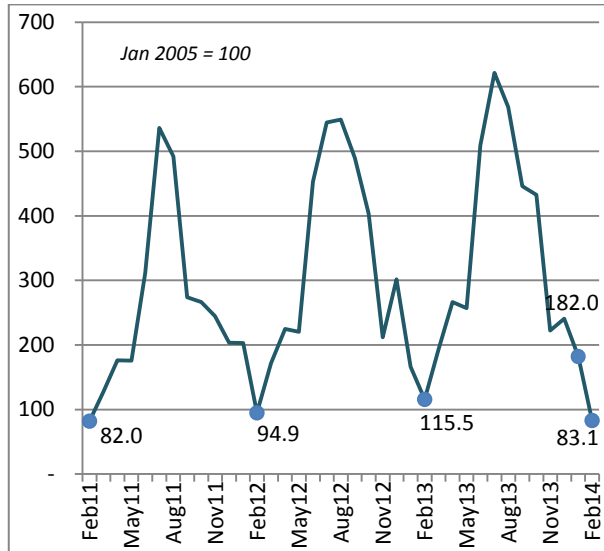
- In February 2014, total visitor arrivals by air showed increasing trends in index values at 3% over February 2013. (Figure 3)

Figure 4: Index of Visitor Arrivals and Country of Usual Residence, February 2011 to February 2014 (January 2005 = 100)

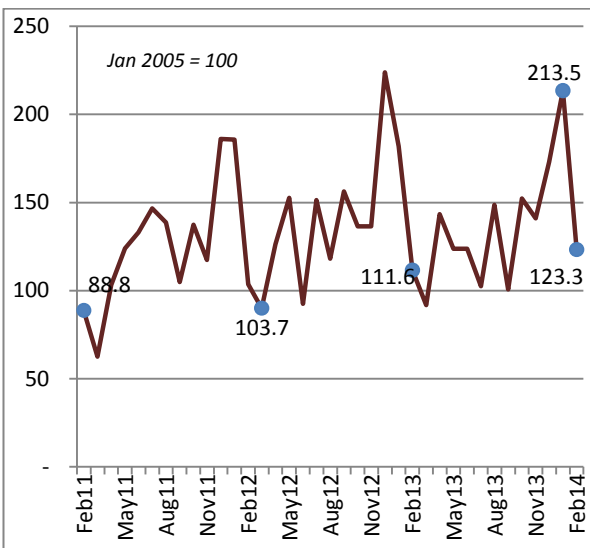
Australia



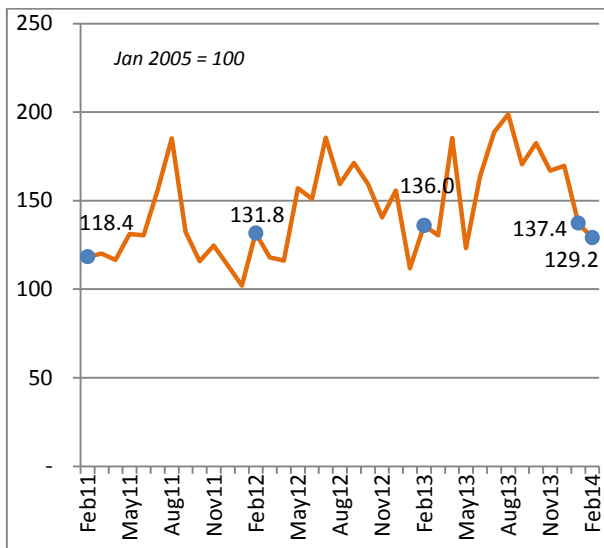
New Zealand



New Caledonia



All other Countries



Note: the vertical axis scale varies in each country chart.

- In February 2014, Australia and New Caledonian markets showed increases in index values of 10% and 11% respectively, while the New Zealand market declined by 28% over the same month of 2013.

**INTENDED LENGTH OF STAY FOR VISITORS ARRIVING BY AIR**

- Visitors arriving by air in February 2014 average intended length of stay stood at 15 days, an increase of 2 days over the same month in 2013, also increasing by 3 days over the previous month.

**AVERAGE LENGTH OF STAY FOR VISITORS ARRIVING BY AIR**

- In February 2014, visitor's average age recorded 42 years, an increase of 3 years over February 2013 and an increase of 8 days over the previous month.

**NEXT UPDATE (MONTHLY)**

**RELEASE DATE**

April

1<sup>st</sup> August 2014

May

1<sup>st</sup> August 2014

**PROVINCIAL STATISTICS OFFICES**

PO Box 22  
Lakatoro, Malekula  
MALAMPA PROVINCE

Commercial Center  
Lenakel, Tanna  
TAFEA PROVINCE

PO Box 8  
Saratamata, Ambae  
PENAMA PROVINCE

Sola, Vanua Lava  
Banks group  
TORBA PROVINCE

**DATA SOURCE**

All International arrival statistics by air provided in the report is sourced from complete Arrival and Departure cards at the Department of Immigration. Cruise ship figures are also sourced from the Department of Immigration.



**Simil Johnson**  
Government Statistician

**Table 1 : Summary of Overseas Migration**  
**Tableau 1 : Résumé des échanges migratoires avec l'extérieur**

Year	Month	ARRIVALS / ARRIVEES						DEPARTURES / DEPARTURES						Cruiseship Arrivals/ Croisiéristes	Année	Mois
		PORT VILA		LUGANVILLE		TOTAL		PORT VILA		LUGANVILLE		TOTAL				
		Residents Résidents	Visitors Visiteurs	Residents Résidents	Visitors Visiteurs	Residents Résidents	Visitors Visiteurs	Resident Résidents	Visitor Visiteurs	Resident Résidents	Visitors Visiteurs	Resident Résidents	Visitors Visiteurs			
2010		20,531	94,909	522	2,271	21,053	97,180	13,133	104,573	188	1,999	13,321	106,572	140,468	2010	
2011		21,752	91,107	521	2,853	22,273	93,960	12,958	96,836	156	1,954	13,114	98,790	154,938	2011	
2012		22,594	105,611	364	2,550	22,958	108,161	14,803	113,158	134	2,339	14,937	115,497	213,243	2012	
2013		25,116	106,466	495	3,643	25,611	110,109	16,380	118,753	164	3,496	16,544	122,249	249,727	2013	
2010	Feb	1,382	5,571	21	35	1,403	5,606	1,578	5,738	32	312	1,610	6,050	5,860	2010	Fév
2011	Feb	1,307	4,567	39	58	1,346	4,625	936	2,922	5	66	941	2,988	14,976	2011	Fév
2012	Feb	1,202	4,642	22	58	1,224	4,700	1,771	5,178	7	55	1,778	5,233	19,613	2012	Fév
	Mar	1,515	6,152	32	191	1,547	6,343	1,143	6,449	3	111	1,146	6,560	16,851		Mar
	Apr	1,793	7,637	49	223	1,842	7,860	998	8,888	4	204	1,002	9,092	15,177		Avr
	May	2,098	7,401	8	73	2,106	7,474	1,135	7,156	-	-	1,135	7,156	17,684		Mai
	Jun	1,746	9,808	8	168	1,754	9,976	1,000	9,072	-	27	1,000	9,099	12,972		Juin
	Jul	1,869	11,471	21	299	1,890	11,770	995	12,740	14	337	1,009	13,077	18,595		Juil
	Aug	1,448	10,154	31	251	1,479	10,405	975	10,726	10	215	985	10,941	9,581		Aoû
	Sep	2,288	11,887	24	295	2,312	12,182	1,013	12,192	15	251	1,028	12,443	15,104		Sep
	Oct	1,717	9,663	29	259	1,746	9,922	1,535	11,688	11	282	1,546	11,970	26,644		Oct
	Nov	2,118	7,431	49	273	2,167	7,704	1,593	8,852	15	230	1,608	9,082	16,697		Nov
	Dec	2,420	10,774	49	296	2,469	11,070	1,348	9,365	28	317	1,376	9,682	17,188		Dec
2013	Jan	1,997	7,415	64	197	2,061	7,612	1,331	11,574	23	325	1,354	11,899	33,491	2013	Jan
	Feb	1,333	4,809	21	122	1,354	4,931	1,919	5,497	14	137	1,933	5,634	16,127		Fév
	Mar	1,656	6,825	40	152	1,696	6,977	1,465	6,799	2	155	1,467	6,954	16,060		Mar
	Apr	2,033	8,182	50	480	2,083	8,662	1,119	9,347	18	399	1,137	9,746	22,314		Avr
	May	2,222	7,327	52	343	2,274	7,670	1,337	8,232	21	302	1,358	8,534	19,248		Mai
	June	2,250	10,806	45	400	2,295	11,206	1,160	10,307	11	427	1,171	10,734	27,524		Juin
	July	2,073	11,390	44	465	2,117	11,855	1,057	12,901	9	412	1,066	13,313	16,759		Juil
	Aug	1,769	10,682	8	115	1,777	10,797	1,265	11,793	2	142	1,267	11,935	13,642		Aoû
	Sep	2,823	11,340	26	256	2,849	11,596	1,073	11,442	20	284	1,093	11,726	15,370		Sep
	Oct	1,739	10,392	34	435	1,773	10,827	928	12,254	10	455	938	12,709	26,805		Oct
	Nov	2,539	7,825	43	298	2,582	8,123	2,070	9,887	17	229	2,087	10,116	19,834		Nov
	Dec	2,682	9,473	68	380	2,750	9,853	1,656	8,720	17	229	1,673	8,949	22,553		Dec
2014	Jan	2,303	8,288	25	159	2,328	8,447	1,393	11,871	10	252	1,403	12,123	23,016	2014	Jan
	Feb	1,491	4,878	49	131	1,540	6,418	2,051	5,763	7	85	2,058	5,848	25,728		Fév

Source: Immigration Department/Service de l'Immigration

Note: Air visitors include yacht visitor arrivals

- Nil or less than half final unit shown / Résultat nul ou inférieur au demi de l'unité indiquée

**Table 2 : Visitor Arrivals by Purpose of Visit**  
**Tableau 2 : Arrivées de visiteurs selon le motif du voyage**

Year	Month	VISITORS/VISITEURS							Année	Mois
		Holidays	Visiting Friends and relatives	Business, Meetings/ Conferences	Stop Over	Others, Education, sports	Total Visitors			
		Vacances	Visite à des amis et à la famille	Affaires, réunions ou conférence	Escale	Autres, education, sport	Visiteurs global			
2010		80,681	6,079	9,615	692	113	97,180	2010		
2011		75,821	7,320	9,933	790	96	93,960	2011		
2012		88,085	7,910	11,294	602	270	108,161	2012		
2013		89,253	7,755	9,079	613	3,409	110,109	2013		
2010	Feb	4,161	323	1,060	62	-	5,606	2010	Fév	
2011	Feb	3,390	400	751	84	-	4,625	2011	Fév	
2012	Feb	3,390	387	833	30	60	4,700	2012	Fév	
	Mar	4,991	455	846	42	9	6,343		Mar	
	Apr	6,596	546	674	29	15	7,860		Avr	
	May	5,928	513	984	34	15	7,474		Mai	
	Jun	7,946	601	1,254	171	4	9,976		Juin	
	Jul	9,877	863	992	32	6	11,770		Juil	
	Aug	8,776	638	929	55	7	10,405		Août	
	Sep	10,089	640	1,350	58	45	12,182		Sep	
	Oct	8,071	586	1,192	43	30	9,922		Oct	
	Nov	6,152	491	980	59	22	7,704		Nov	
	Dec	8,989	1,204	803	26	48	11,070		Dec	
2013	Jan	6,315	596	638	63	-	7,612	2013	Jan	
	Feb	3,431	437	856	16	191	4,931		Fév	
	Mar	5,557	594	645	57	124	6,977		Mar	
	Apr	6,874	558	937	28	265	8,662		Avr	
	May	6,029	565	800	33	243	7,670		Mai	
	June	9,152	723	775	62	494	11,206		Juin	
	July	9,819	853	582	89	512	11,855		Juil	
	Aug	8,678	767	1,001	59	292	10,797		Août	
	Sep	9,814	567	847	70	298	11,596		Sep	
	Oct	8,806	705	849	82	385	10,827		Oct	
	Nov	6,389	566	757	36	375	8,123		Nov	
	Dec	8,389	824	392	18	230	9,853		Dec	
2014	Jan	7,317	544	335	63	188	8,447	2014	Jan	
	Feb	3,773	407	462	47	320	5,009		Fév	

Source: Immigration Department/Service de l'Immigration

- Nil or less than half final unit shown / résultat nul ou inférieur au demi de l'unité indiquée

**Table 3 : Visitor Arrivals by Usual Country of Residence**  
**Tableau 3 : Arrivées des visiteurs par pays de résidence habituelle**

Year	Month	Australia	New Zealand	New Caledonia	Other Pacific Countries	Europe	North America	Japan	Other Countries	TOTAL	Année	Mois
		Australie	Nouvelle-Zélande	Nouvelle-Calédonie	Autres Pays du Pacifique		Amérique du Nord	Japon	Autres pays			
2010		58,760	11,927	11,410	4,719	4,888	2,395	517	2,564	97,180	2010	
2011		57,843	11,399	11,376	3,397	5,265	1,922	630	2,128	93,960	2011	
2012		65,405	14,430	13,138	4,313	5,491	2,094	705	2,585	108,161	2012	
2013		65,776	15,068	12,515	4,874	5,544	2,614	659	3,059	110,109	2013	
2010	Feb	2,778	435	942	640	369	192	50	199	5,606	2010	Fév
2011	Feb	2,593	306	697	345	361	102	50	171	4,625	2011	Fév
2012	Feb	2,387	354	814	403	367	130	59	186	4,700	2012	Fév
	Mar	3,970	641	707	277	332	131	52	233	6,343		Mar
	Apr	5,021	838	991	270	335	133	58	214	7,860		Avr
	May	4,091	821	1,198	454	410	219	59	222	7,474		Mai
	Jun	6,248	1,690	726	310	523	203	52	224	9,976		Juin
	Jul	6,937	2,032	1,188	433	633	216	95	236	11,770		Juil
	Aug	6,043	2,049	928	298	646	181	58	202	10,405		Août
	Sep	7,640	1,827	1,227	451	462	231	59	285	12,182		Sep
	Oct	5,960	1,505	1,072	334	576	216	41	218	9,922		Oct
	Nov	4,622	790	1,071	293	505	156	55	212	7,704		Nov
	Dec	6,833	1,126	1,758	543	361	173	68	208	11,070		Dec
2013	Jan	4,591	621	1,428	231	364	135	32	210	7,612	2013	Jan
	Feb	2,448	429	876	440	340	154	26	218	4,931		Fév
	Mar	4,405	718	720	344	388	135	36	231	6,977		Mar
	Apr	4,931	994	1,126	522	533	222	58	276	8,662		Avr
	May	4,669	959	971	293	374	165	62	177	7,670		Mai
	June	6,911	1,901	971	461	419	279	39	225	11,206		Juin
	July	7,091	2,319	805	384	654	217	47	338	11,855		Juil
	Aug	5,781	2,121	1,167	444	672	245	88	279	10,797		Août
	Sep	7,660	1,664	790	458	399	269	67	289	11,596		Sep
	Oct	6,431	1,614	1,196	418	523	311	65	269	10,827		Oct
	Nov	4,735	830	1,107	413	448	239	86	265	8,123		Nov
	Dec	6,123	898	1,358	466	430	243	53	282	9,853		Dec
2014	Jan	4,898	679	1,676	284	414	188	42	266	8,586	2014	Jan
	Feb	2,608	310	968	357	304	207	33	222	5,009		Fév

Source: Immigration Department / Service de l'Immigration



**Table 4 : Overseas Arrivals of Residents by Nationality**

**Tableau 4 : Arrivées des résidents par nationalité**

Year	Month	Ni-Vanuatu	Australian Australien	French Français	British Anglais	New Zealander Néo- Zélandais	Asian Asiatiques	Pacific Islanders Autres pays du Pacifique	North Americans Américain du Nord	Other countries Autres pays	TOTAL	Année	Mois
2010		11,794	3,700	1,894	132	1,436	504	768	496	330	21,053	2010	
2011		12,508	3,867	1,802	244	1,370	719	1,090	352	321	22,273	2011	
2012		14,317	3,629	1,526	203	1,236	696	686	370	295	22,958	2012	
2013		15,410	4,096	1,782	167	1,293	915	1,007	566	375	25,611	2013	
2010	Feb	656	313	198	3	87	16	57	53	20	1,403	2010	Fév
2011	Feb	538	271	104	20	102	60	203	26	22	1,346	2011	Fév
2012	Feb	619	232	76	15	119	46	67	29	21	1,224	2012	Fév
	Mar	783	307	147	24	109	70	52	23	32	1,547		Mar
	Apr	1,112	327	102	15	110	76	41	37	22	1,842		Avr
	May	1,348	330	164	10	107	60	43	27	17	2,106		Mai
	June	1,139	255	97	21	91	69	46	18	18	1,754		Juin
	Jul	1,155	288	185	21	94	44	50	37	16	1,890		Juil
	Aug	814	282	105	18	90	51	47	41	31	1,479		Aoû
	Sep	1,650	283	98	11	109	57	44	30	30	2,312		Sep
	Oct	948	378	137	15	86	62	61	24	35	1,746		Oct
	Nov	1,442	304	146	18	99	36	56	35	31	2,167		Nov
	Dec	1,690	337	110	18	115	66	64	43	26	2,469		Dec
2013	Jan	983	391	236	18	158	73	116	51	35	2,061	2013	Jan
	Feb	688	270	93	12	84	62	87	26	32	1,354		Fév
	Mar	915	322	124	16	120	74	63	33	29	1,696		Mar
	Apr	1,259	352	160	21	114	63	56	30	28	2,083		Avr
	May	1,559	297	110	17	99	70	48	34	40	2,274		Mai
	June	1,386	353	153	31	124	94	83	44	27	2,295		Juin
	July	1,074	390	162	33	112	75	192	41	38	2,117		Juil
	Aug	1,014	302	138	5	90	75	67	56	30	1,777		Aoû
	Sep	2,026	341	130	1	80	90	78	66	37	2,849		Sep
	Oct	863	386	184	1	93	92	64	64	26	1,773		Oct
	Nov	1,692	382	153	1	102	87	75	66	24	2,582		Nov
	Dec	1,951	310	139	11	117	60	78	55	29	2,750		Dec
2014	Jan	1,071	456	230	4	144	88	195	109	31	2,328	2014	Jan
	Feb	678	319	176	1	100	75	98	67	26	1,540		Fév

Source: Immigration Department / Service de l'Immigration

**Table 5 : Visitors Arriving by Air Intended Length of Stay**

**Tableau 5 : Arrivée des Visiteurs à longue durée de Séjour**

Year	Month	AVERAGE INTENDED LENGTH OF STAY / LA MOYENNE DE LONGUE DUREE DE SEJOUR			Année	Mois
		Port Vila	Luganville	Vanuatu		
2010		9.5	10.9	10.2	2010	
2011		8.9	10.9	9.9	2011	
2012		9.8	11.1	10.5	2012	
2013		10.8	12.1	11.5	2013	
2010	Feb	12.0	11.4	11.7	2010	Fév
2011	Feb	8.4	11.4	9.9	2011	Fév
2012	Feb	9.3	10.7	10.0	2012	Fév
	Mar	9.7	11.2	10.5		Mar
	Apr	9.7	10.8	10.2		Apr
	May	9.8	12.6	11.2		Mai
	Jun	9.5	11.7	10.6		Juin
	Jul	11.4	11.5	11.5		Juil
	Aug	10.4	10.5	10.5		Aoû
	Sep	9.5	11.0	10.3		Sep
	Oct	10.4	10.5	10.5		Oct
	Nov	8.9	9.0	9.0		Nov
	Dec	8.9	12.7	10.8		Dec
2013	Jan	11.6	11.2	11.4	2013	Jan
	Feb	15.6	9.4	12.5		Fév
	Mar	10.1	11.2	10.6		Mar
	Apr	10.7	10.8	10.8		Avr
	May	9.5	12.6	11.0		Mai
	June	9.2	11.7	10.4		Juin
	July	10.0	12.0	11.0		Juil
	Aug	9.5	13.2	11.3		Aoû
	Sep	9.0	12.8	10.9		Sep
	Oct	15.7	10.6	13.1		Oct
	Nov	8.0	11.8	9.9		Nov
	Dec	11.1	12.2	11.6		Dec
2014	Jan	10.4	13.6	12.0	2014	Jan
	Feb	13.1	16.7	14.9		Fév

Source: Immigration Department/Service de l'Immigration

**Table 6 : Visitors Arriving by Air Average Age**  
**Tableau 6 : Arrivée des Visiteurs par Age moyen**

Year	Month	AVERAGE AGE OF VISITORS / L'AGE MOYEN DES VISITEURS			Année	Mois
		Port Vila	Luganville	Vanuatu		
2010	Feb	38.0	42.9	40.5	2010	Fév
2011	Feb	35.4	43.5	39.4	2011	Fév
2012	Feb	38.7	45.9	42.3	2012	Fév
	Mar	38.0	42.9	40.5		Mar
	Apr	38.0	42.9	40.5		Avr
	May	39.7	53.3	46.5		Mai
	Jun	37.9	29.7	33.8		Juin
	Jul	38.4	41.0	39.7		Juil
	Aug	41.5	46.5	44.0		Aoû
	Sep	36.5	38.3	37.4		Sep
	Oct	41.5	46.5	44.0		Oct
	Nov	36.6	41.6	39.1		Nov
	Dec	36.6	36.9	36.8		Dec
	2013	Jan	35.4	44.2		39.8
Feb		32.0	46.4	39.2	Fév	
Mar		37.0	41.5	39.2	Mar	
Apr		38.1	34.4	36.2	Avr	
May		41.7	46.7	44.2	Mai	
June		37.0	37.5	37.2	Juin	
July		34.6	41.5	38.0	Juil	
Aug		38.1	43.7	40.9	Aoû	
Sep		35.9	39.2	37.6	Sep	
Oct		34.1	31.9	33.0	Oct	
Nov		32.5	38.7	35.6	Nov	
Dec		29.8	33.6	31.7	Dec	
2014	Jan	35.1	32.4	33.7	2014	Jan
	Feb	44.8	38.9	41.9		Fév

Source: Immigration Department/Service de l'Immigration