

## STATISTICS UPDATE: OVERSEAS TRADE

### OCTOBER 2013 HIGHLIGHTS

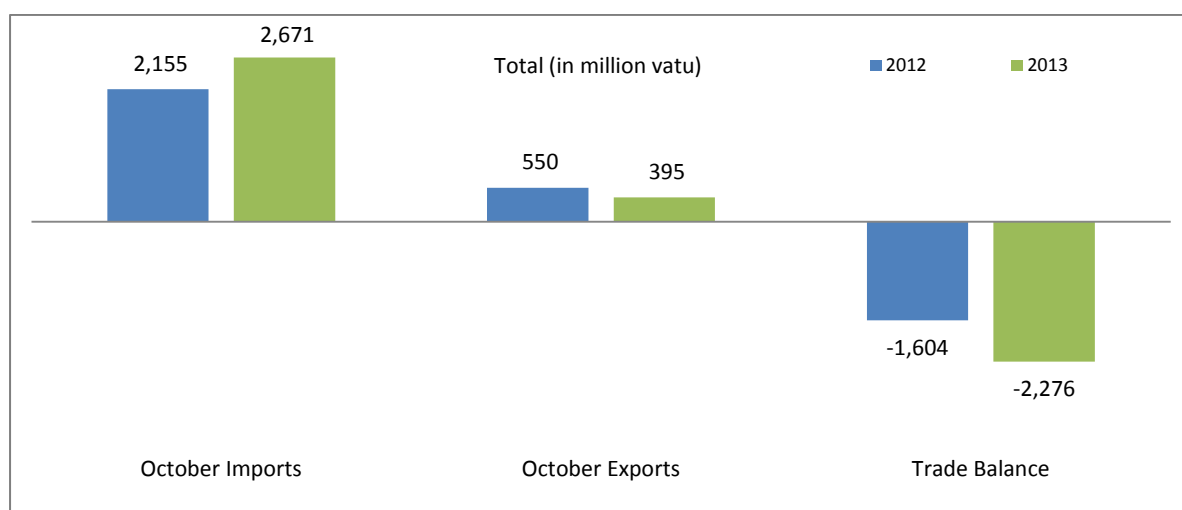


Figure 1: Terms of trade October 2013 and October 2012 (Million Vatu)

Vanuatu's trade deficit (the excess of imports over exports) in October 2013 stood at vatu 2,276 million indicating a deterioration of vatu 672 million over October 2012 from vatu 1,604 million. Total imports increased by 24% or 517 million from vatu 2,155 million in October 2012 to vatu 2,671 million. The deterioration in the trade balance was reinforced by the increase in imports for home consumption by 24% or vatu 513 million from vatu 2,146 million to vatu 2,659 million over September 2012.

Domestic exports earnings (excluding re-exports) for October 2013 decreased by 28% or vatu 155 million over October 2012 from vatu 550 million to vatu 395 million. The decrease was partially attributed to decreases in coconut oil and beef exports in October 2013.

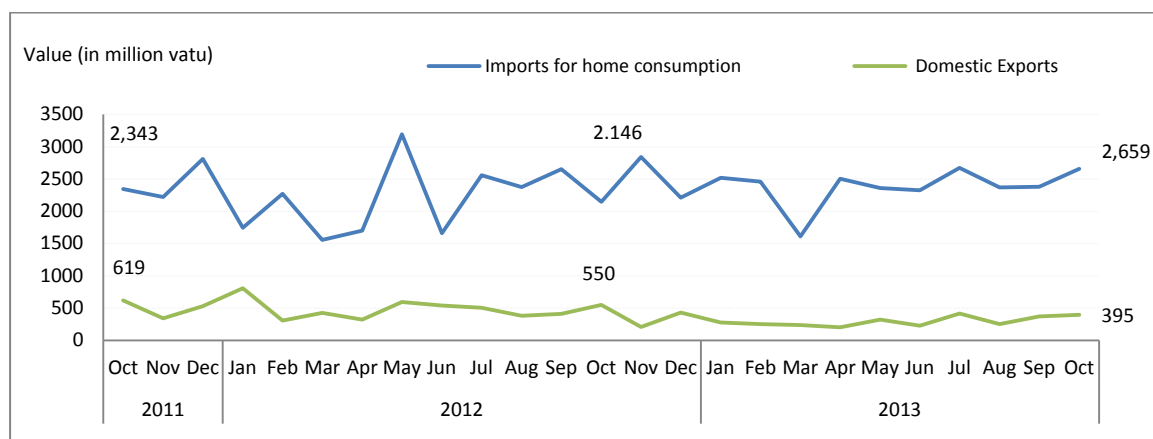


Figure 2: Overseas trade exports and imports for home consumption (million vatu)

**EXPORTS**

In October 2013, for the main export commodities, Copra constituted the largest share in value at 24% followed by kava 16%, Other products 18% coconut oil 12%, beef 10%, while the rest of the export group made up less than 10% each. Other products comprised of sandal wood, medicaments, scrap metal and personal effects. (See attached Table 2, Table 3)

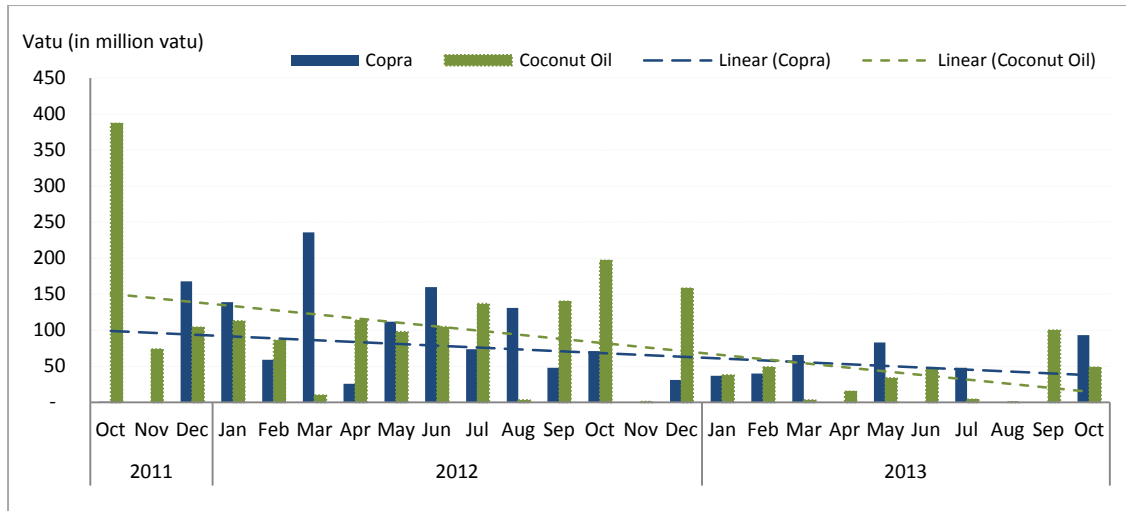


Figure 3: Exports of Coconut Products (million vatu)

Coconut products exports recorded an increase of 32% for copra, coconut oil decreased by (-75%) or vatu 149 million in October 2013 over the same period of last year. In addition, coconut meal exports also indicated a decrease of vatu 2 million in October 2013 to vatu 13 million compared to vatu 4 million in October 2012.

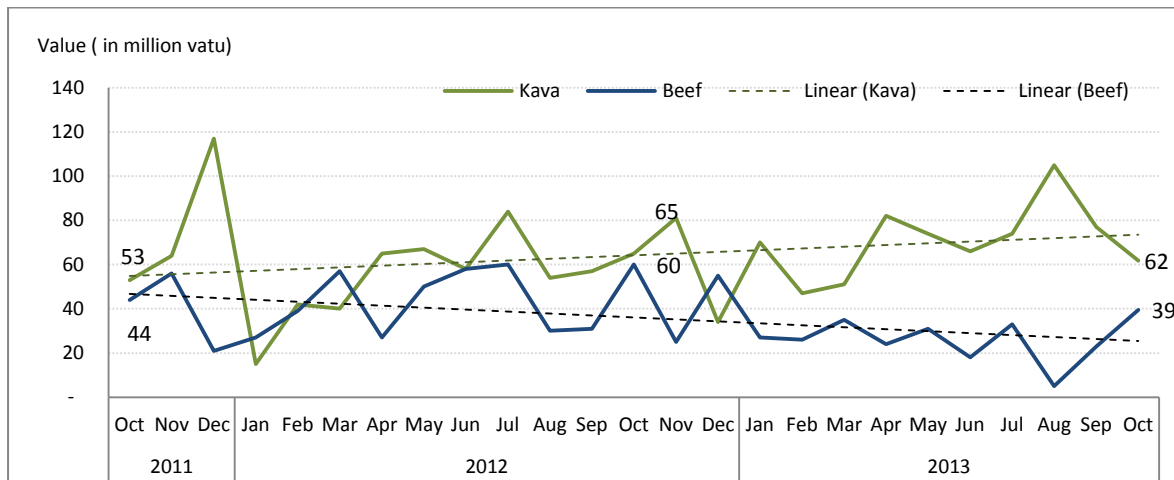


Figure 4: Exports of Kava and Beef Products (million vatu)

Kava export earnings decreased to vatu 62 million in October 2013 indicating a decrease of 4% compared to vatu 65 million in October 2012. The beef export value decreased to vatu 39 million in October 2013 compared to vatu 60 million in October 2012. This decrease is attributed to low supply by local farmers to the abattoirs over the same period in 2012.

## IMPORTS

In terms of imports by commodity groups, machines and transport registered the largest value (C.I.F) at vatu 770 million or 29% of the total imports for home consumption, followed by food and live animals 20% or vatu 542 million, miscellaneous goods 14%, basic manufactured goods 13%, chemical products 11%, mineral fuels 8% and other products such as beverages and tobacco, crude materials, goods not classified elsewhere, and oils and fats made up less than 5% each of the total imports for home consumption over the month of October 2013.

In October 2013, the import groups that increased in value over October 2012 were: mineral fuels registering a significant increase of vatu 141 million followed by machines and transport 46%, miscellaneous goods 25%, basic manufactured goods 10%, food and live animals 9%, chemical products 7% and crude materials 6%. The rest of the commodity group that decreased were: goods not specified elsewhere (-34%), beverages and tobacco (-27%) and oils and fats (-6%).

## REVISIONS TO IMPORTS AND EXPORTS STATISTICS

The Vanuatu National Statistics Office receives import and export statistics data on quantity and value from the Department of Customs and Inland Revenue's ASYCUDA merchandise trade processing system. On occasion revisions are made to import and export entries after publication. The Vanuatu National Statistics Office makes every possible effort to check the data and resolve inconsistencies and anomalies with colleagues from the Department of Customs and Inland Revenue prior to publishing. Where revisions are necessary these are highlighted in the statistical tables.

## CONCEPTS AND DEFINITIONS

- **Imports for Home Consumption** are goods, materials or articles purchased in other countries and brought into Vanuatu and cleared through customs procedures for home consumption. Imports for home consumption are valued on a C.I.F. (cost, insurance, freight) basis. This means that for each commodity, the value recorded includes the factory price, the cost of packaging, the freight cost from overseas to Vanuatu ports and the insurance.
- **Exports** are expressed in F.O.B. (free on board) prices. It means the total value includes the production cost and the transport cost to the Vanuatu port of export.
- **Imports for re-export** refers to imports destined to be re-exported without having undergone any transformation, or only minor ones. This is especially the case of duty free goods and fuel "imported" into the country and sold to non-resident airline operators or ships.
- **Re-exports** are goods, materials or articles exported in the same condition as they were imported, and imported goods, which have undergone operations such as repair, repacking, or bottling which leave them essentially unchanged before exporting.

**ATTACHED:**

- Table 1: Summary of overseas trade
- Table 2: Principal domestic exports, value
- Table 3: Principal domestic exports, quantity
- Table 4: Imports cleared for home consumption, value

**NEXT UPDATE (MONTHLY)**

**RELEASE DATE**

November

10<sup>th</sup> February 2014

**MORE INFORMATION**

For statistical enquiries about this topic, please contact:

National Statistics Office: (678) 22110/22111 – email: [stats@vanuatu.gov.vu](mailto:stats@vanuatu.gov.vu)

Website: <http://www.vnso.gov.vu>

**NATIONAL STATISTICS OFFICES IN THE PROVINCES**

Torba Province  
Penama Province  
Tafea Province

Sanma Province  
Malampa Province



**Simil Johnson**  
**Government Statistician**

**Table 1** Summary of Overseas Trade  
**Tableau 1** Récapitulatif du commerce extérieur

In Million Vatu  
En millions de Vatu

Year / Quarter	EXPORTS F.O.B / EXPORTATION FAB					IMPORTS C.I.F / IMPORTATIONS CAF							Année Trimestre
	Domestic Exports Exportation de produits locaux			Re-exports	Total Exports	Imports for Home Consumption / Importations destinées à la Consommation intérieure			Imports for Re- exports	Total Imports	Trade Balance	Balance Ratio	
	Luganville	Port Vila	Total	Ré- exportations	Total des Exportations (E)	Luganville	Port Vila	Total	Importations pour ré- exportations	Total des Importations (I)	Déficit Commercial (E)-(I)	Taux de Couverture (E)/(I)	
2010	2,625	1,855	4,480	214	4,694	3,904	23,486	27,390	119	27,509	(22,815)	0.2	2010
2011	3,816	2,196	6,012	-	6,012	4,259	22,803	27,062	193	27,256	(21,243)	0.2	2011
2012	3,305	1,768	5,072	-	5,072	4,075	22,832	26,907	547	27,454	(22,382)	0.2	2012
2011 1st	897	506	1,404	-	1,404	1,039	5,370	6,409	54	6,464	(5,060)	0.2	2011 1er
2nd	1,038	547	1,585	-	1,585	1,035	5,005	6,040	13	6,053	(4,468)	0.3	2ème
3rd	823	712	1,534	-	1,534	901	6,337	7,239	29	7,267	(5,733)	0.2	3ème
4th	1,058	431	1,489	-	1,489	1,284	6,090	7,375	97	7,472	(5,983)	0.2	4ème
2012 1st	761	384	1,145	-	1,145	910	4,661	5,571	110	5,681	(4,536)	0.2	2012 1er
2nd	937	513	1,451	-	1,451	942	5,610	6,553	110	6,663	(5,212)	0.2	2ème
3rd	887	403	1,290	-	1,290	1,257	6,331	7,588	279	7,867	(6,577)	0.2	3ème
4th	719	467	1,186	-	1,186	966	6,230	7,196	48	7,244	(6,057)	0.2	4ème
2013 1st	476	287	764	-	764	1,056	5,531	6,587	35	6,622	(5,858)	0.1	2013 1er
2nd	498	251	749	-	749	1,041	6,145	7,186	38	7,224	(6,475)	0.1	2ème
3rd	597	425	1,022	-	1,022	1,015	6,408	7,422	58	7,481	(6,459)	0.1	3ème
2012 Jan	284	127	411	-	411	178	1,566	1,744	19	1,763	(1,351)	0.2	2012 Jan
Feb	191	116	307	-	307	495	1,775	2,270	87	2,358	(2,051)	0.1	Fev
Mar	286	141	427	-	427	237	1,320	1,557	4	1,561	(1,134)	0.3	Mars
Apr	241	79	319	-	319	153	1,547	1,699	56	1,755	(1,435)	0.2	Apr
May	308	287	595	-	595	523	2,668	3,191	24	3,215	(2,620)	0.2	Mai
Jun	389	148	537	-	537	266	1,396	1,662	30	1,692	(1,155)	0.3	Juin
Jul	364	138	502	-	502	305	2,253	2,558	5	2,563	(2,061)	0.2	Juil
Aug	206	173	379	-	379	372	2,004	2,376	72	2,448	(2,069)	0.2	Août
Sep	317	92	409	-	409	580	2,074	2,654	202	2,857	(2,448)	0.1	Sep
Oct	347	203	550	-	550	296	1,850	2,146	9	2,155	(1,604)	0.3	Oct
Nov	121	85	206	-	206	425	2,416	2,841	32	2,873	(2,667)	0.1	Nov
Dec	251	179	430	-	430	244	1,965	2,209	7	2,216	(1,786)	0.2	Dec
2013 Jan	177	98	276	-	276	365	2,153	2,518	16	2,534	(2,258)	0.1	2013 Jan
Feb	158	93	251	-	251	456	2,001	2,457	5	2,461	(2,210)	0.1	Fev
Mar	141	96	237	-	237	235	1,378	1,613	14	1,627	(1,390)	0.1	Mars
Apr	89	115	204	-	204	336	2,167	2,503	11	2,514	(2,309)	0.1	Apr
May	242	78	320	-	320	430	1,929	2,359	15	2,374	(2,054)	0.1	Mai
Jun	167	58	225	-	225	276	2,049	2,325	12	2,337	(2,112)	0.1	Juin
Jul	179	219	398	-	398	209	2,462	2,671	5	2,676	(2,278)	0.1	Juil
Aug	171	79	250	-	250	382	1,989	2,371	33	2,404	(2,154)	0.1	Août
Sep	247	127	373	-	373	425	1,956	2,380	21	2,401	(2,027)	0.2	Sep
Oct	250	144	395	-	395	308	2,351	2,659	12	2,671	(2,276)	0.1	Oct

**Table 2 Principal Domestic Exports, in Value**  
**Tableau 2 Principales exportations de produits locaux, en valeur**

**In million Vatu**  
**En millions de Vatu**

Year Quarter	Copra	Coconut oil	Beef veal	Cocoa	Shell	Sawn Timber	Cowhides	Kava	Coffee	Vanilla	Coconut Meal	Root crops	Live Cattle	Live Fish	Alcoholic Drink	Fish	Other products	Total	Année Trimestre
	Coprah	Huile de coco	Viande bovine	Cacao	Coquillages	Bois débité	Cuir et peaux		Café	Vanille	Farine de coprah	Récolte de racines	Bétail vivant	Poisson vivant	Boissons Alcooolisées	Poisson	Autres produits		
2010	579	933	494	383	31	26	14	508	3	5	54	0	0	324	208	103	815	4,480	2010
2011	1,065	1,592	516	247	30	65	29	762	18	5	87	1	0	166	175	359	898	6,012	2011
2012	1,087	1,162	518	258	27	42	27	661	3	11	92	-	-	136	161	185	702	5,072	2012
2011 1st	306	432	136	6	9	3	8	98	1	1	14	0	-	46	40	188	115	1,403	2011 1er
2nd	385	292	128	104	1	31	8	190	7	1	33	-	-	49	50	99	206	1,585	2ème
3rd	205	302	132	88	9	0	6	239	0	2	26	1	-	40	45	54	384	1,534	3ème
4th	169	565	121	48	11	30	7	234	10	0	14	-	0	30	41	17	193	1,489	4ème
2012 1st	434	208	123	10	0	8	7	97	0	3	14	-	-	48	30	29	133	1,145	2012 1er
2nd	298	317	135	70	1	20	7	189	0	5	26	-	-	56	21	69	237	1,451	2ème
3rd	253	280	120	97	14	5	6	195	2	1	28	-	-	17	60	74	138	1,290	3ème
4th	102	356	140	81	12	8	7	179	0	2	23	-	-	16	51	13	194	1,186	4ème
2013 1st	143	90	89	23	6	15	8	168	3	2	25	-	-	20	36	55	83	764	2013 1er
2nd	83	95	73	98	8	10	4	223	1	1	17	-	-	25	21	33	57	749	2ème
3rd	48	103	61	123	7	47	10	255	1	1	62	-	-	20	29	33	220	1,021	3ème
2012 Jan	139	113	27	10	-	1	1	15	-	1	8	-	-	34	1	13	47	411	2012 Jan
Feb	59	86	39	0	-	2	4	42	0	0	4	-	-	6	13	7	46	307	Fev
Mar	236	10	57	-	0	5	2	40	0	2	2	-	-	8	16	9	40	427	Mars
Apr	26	114	27	11	-	7	3	65	-	0	7	-	-	8	0	14	37	319	Apr
May	112	98	50	10	1	-	2	67	-	5	7	-	-	45	7	20	172	595	Mai
Jun	160	105	58	49	-	13	2	58	0	-	11	-	-	3	13	35	29	537	Juin
July	74	137	60	48	14	2	3	84	1	-	14	-	-	6	2	31	27	502	Juil
Aug	131	3	30	13	-	1	2	54	1	1	10	-	-	6	28	17	83	379	Août
Sep	48	140	31	36	-	2	1	57	-	-	5	-	-	5	30	26	28	409	Sept
Oct	71	197	60	11	8	3	5	65	0	1	14	-	-	3	21	3	89	550	Oct
Nov	-	1	25	37	-	4	-	81	0	1	-	-	-	9	16	5	26	206	Nov
Dec	31	158	55	33	4	1	2	34	-	-	9	-	-	4	14	5	79	430	Dec
2013 Jan	37	38	27	18	-	6	3	70	3	-	7	-	-	4	11	26	25	276	2013 Jan
Feb	40	49	26	2	6	2	2	47	0	1	10	-	-	10	19	5	31	251	Fev
Mar	66	3	35	3	-	6	3	51	-	1	8	-	-	6	6	23	27	237	Mars
Apr	-	15	24	13	-	6	2	82	0	-	6	-	-	13	7	7	29	204	Apr
May	83	34	31	31	8	4	-	74	1	1	12	-	-	5	7	16	13	320	Mai
Jun	-	47	18	54	-	-	2	66	-	0	-	-	-	7	8	9	14	225	Juin
Jul	48	4	33	47	7	1	5	74	-	0	5	-	-	6	7	29	131	398 r	Juil
Aug	-	0	5	41	-	2	1	105	1	1	33	-	-	7	8	2	46	250	Août
Sep	-	100	23	35	-	44	4	77	-	0	24	-	-	8	14	3	43	373	Sept
Oct	93	48	39	18	9	21	1	62	-	1	13	-	-	5	9	2	73	395	Oct

Source: Department of Customs and Inland Revenue / Service des Douanes et Contributions Indirectes (r) revised other products data

**Table 3 Principal Domestic Exports, in Quantity**  
**Tableau 3 Principales exportations, en quantité**

**In tonnes**  
**En tonnes**

Year / Quarter	Copra	Coconut oil	Beef veal	Cocoa	Shell	Cowhides	Kava	Coffee	Vanilla	Coconut Meal	Root crops	Live Cattle	Live Fish	Fish	Année Trimestre
	Coprah	Huile de coco	Viande bovine	Cacao	Coquillages	Cuir et peaux		Café	Vanille	Farine de coprah	Récolte de racines	Bétail vivant	Poisson vivant	Poisson	
2010	12,133	10,325	1,123	1,525	10	226	498	4	1	5,232	0	0	238	381	2010
2011	13,596	12,000	1,105	1,068	10	336	734	27	1	6,917	4	0	205	2,743	2011
2012	16,336	10,011	1,031	1,415	9	387	643	3	3	6,082	-	-	134	682	2012
2011 1st	3,768	3,461	300	25	3	102	94	1	0	1,172	0	-	102	1,973	2011 1er
2nd	4,526	1,956	270	446	0	88	186	11	0	2,534	-	-	41	452	2ème
3rd	3,033	2,299	290	380	3	64	225	0	1	2,137	4	-	40	265	3ème
4th	2,269	4,284	245	217	4	81	230	15	0	1,074	-	0	22	52	4ème
2012 1st	6,188	1,674	236	40	0	80	99	1	1	1,079	-	-	39	213	2012 1er
2nd	4,588	2,696	284	381	0	83	184	0	2	1,628	-	-	56	196	2ème
3rd	3,791	2,423	240	539	4	105	187	2	0	1,708	-	-	18	230	3ème
4th	1,769	3,218	271	454	4	119	173	0	1	1,667	-	-	21	43	4ème
2013 1st	4,022	838	205	136	2	114	158	3	1	1,660	-	-	13	150	2013 1er
2nd	2,438	1,529	142	491	3	72	223	1	0	1,162	-	-	21	84	2ème
3rd	1,326	1,016	129	724	2	120	252	1	0	2,966	-	-	25	105	3ème
2012 Jan	2,071	900	50	40	-	19	14	0	-	616	-	-	29	19	2012 Jan
Feb	664	714	74	0	-	40	46	0	0	308	-	-	2	4	Fev
Mar	3,454	60	113	-	0	21	38	0	1	155	-	-	8	191	Mars
Apr	350	922	61	55	-	39	61	-	0	513	-	-	5	43	Apr
May	1,656	890	101	58	0	20	64	-	1	428	-	-	47	58	Mai
June	2,583	883	122	268	-	24	60	0	-	688	-	-	4	94	Juin
Jul	1,001	1,132	109	272	4	63	79	1	-	737	-	-	2	67	Juil
Aug	1,680	24	56	63	-	23	54	1	0	643	-	-	11	58	Août
Sep	1,109	1,267	74	205	-	19	55	-	-	329	-	-	4	105	Sep
Oct	1,003	1,791	113	45	3	80	64	0	0	1,009	-	-	4	13	Oct
Nov	-	9	55	247	-	-	78	0	0	-	-	-	12	14	Nov
Dec	766	1,418	104	162	1	40	30	-	-	658	-	-	5	16	Dec
2013 Jan	1,274	350	50	113	-	44	68	3	-	491	-	-	3	100	2013 Jan
Feb	1,193	486	69	9	2	29	44	0	0	709	-	-	6	14	Fev
Mar	1,555	1	86	14	-	41	46	-	0	459	-	-	4	36	Mars
Apr	-	279	45	80	-	41	82	0	-	358	-	-	10	19	Apr
May	2,438	260	55	187	3	-	75	1	0	804	-	-	6	31	Mai
Jun	-	990	42	224	-	31	66	-	-	-	-	-	4	34	Juin
Jul	1,326	28	72	252	2	62	73	-	0	322	-	-	4	92	Juil
Aug	-	4	15	226	-	18	104	1	0	1,368	-	-	6	6	Août
Sep	-	984	42	246	-	41	75	-	0	1,276	-	-	14	7	Sep
Oct	2,542	481	86	115	3	19	62	-	0	573	-	-	6	9	Oct

Source: Department of Customs and Inland Revenue / Service des Douanes et Contributions Indirectes

**Table 4 Imports Cleared for Home Consumption, in Value**

**Tableau 4 Importations destinées à la consommation intérieure par produit selon la Classification type pour le commerce international, en valeur**

**In million Vatu**

**En million de Vatu**

Year	Quarter	Food & Live Animals	Beverages & Tobacco	Crude Materials Except Fuels	Mineral Fuels	Oils, Fats & Waxes	Chemical Products	Basic Manufactured Products	Machines & Transport Equipment	Miscellaneous Manufactured Goods	Goods N.E.C.	Total	Année	Trimestre
		Produits alimentaires et animaux vivants	Boissons et tabacs	Matières brutes non combustibles	Energie fossile	Huiles et graisses animales et végétales	Produits chimiques	Produits manufacturés	Machines et matériels de transports	Produits manufacturés divers	Articles et transactions, N.C.A			
2010		5,108	1,023	419	3,618	133	2,923	3,817	7,252	2,735	361	27,390	2010	
2011		5,537	1,038	379	4,835	129	2,855	3,566	5,542	2,820	362	27,062	2011	
2012		5,307	1,153	432	4,621	141	2,809	3,590	5,964	2,575	314	26,907	2012	
2011	1st	1,044	216	77	1,208	22	750	935	1,527	582	49	6,410	2011	1er
	2nd	1,343	239	74	866	29	729	822	1,134	705	98	6,039		2ème
	3rd	1,551	297	123	1,266	35	699	946	1,468	773	80	7,238		3ème
	4th	1,599	286	103	1,495	43	678	864	1,414	759	134	7,375		4ème
2012	1st	1,103	303	79	855	41	630	736	1,243	494	86	5,571	2012	1er
	2nd	1,059	225	90	1,442	20	647	804	1,585	607	74	6,553		2ème
	3rd	1,552	257	128	1,471	44	675	1,087	1,615	684	75	7,588		3ème
	4th	1,594	367	136	853	36	858	962	1,521	791	79	7,196		4ème
2013	1st	1,394	236	88	1,204	24	548	1,006	1,332	657	100	6,587	2013	1er
	2nd	1,349	315	154	1,503	29	689	879	1,457	731	80	7,186		2ème
	3rd	1,459	293	126	1,210	24	703	1,039	1,745	751	74	7,422		3ème
2012	Jan	391	110	30	40	19	210	238	522	172	12	1,744	2012	Jan
	Feb	334	121	24	764	9	226	256	325	161	49	2,270		Fev
	Mar	378	72	25	50	13	193	242	397	161	25	1,557		Mars
	Apr	219	57	34	607	13	151	203	269	129	18	1,699		Apr
	May	537	83	29	798	4	268	321	893	239	19	3,191		Mai
	Jun	303	85	27	37	3	228	280	423	238	37	1,662		Juin
	Jul	462	64	61	614	19	206	375	469	268	21	2,558		Juil
	Aug	616	125	32	43	7	268	389	623	242	32	2,376		Août
	Sep	473	68	35	814	19	201	324	524	174	22	2,654		Sep
	Oct	499	87	46	61	21	261	321	529	290	31	2,146		Oct
	Nov	492	158	40	777	5	263	341	504	246	15	2,841		Nov
	Dec	602	122	50	15	11	333	300	487	255	33	2,209		Dec
2013	Jan	601	71	35	401	10	201	350	568	260	20	2,518	2013	Jan
	Feb	474	67	31	783	7	189	339	329	175	63	2,456		Fev
	Mar	319	98	22	20	7	158	316	435	221	17	1,613		Mars
	Apr	525	129	57	711	12	231	246	370	202	20	2,503		Apr
	May	396	84	46	256	11	252	355	634	304	21	2,359		Mai
	Jun	428	102	51	537	6	206	278	453	225	39	2,325		Juin
	Jul	470	87	56	522	6	225	339	654	277	33	2,671		Juil
	Aug	623	99	29	64	9	263	400	611	262	12	2,371		Août
	Sep	366	106	40	624	9	215	300	479	212	29	2,380		Sep
	Oct	542	63	49	201	20	280	353	770	361	20	2,659		Oct

Source: Department of Customs and Inland Revenue / Service des Douanes et Contributions Indirectes