

STATISTICS UPDATE: INTERNATIONAL MIGRATION

JULY 2013 HIGHLIGHTS

OVERVIEW

Figure 1: Air and Day visitors: July 2012 to July 2013



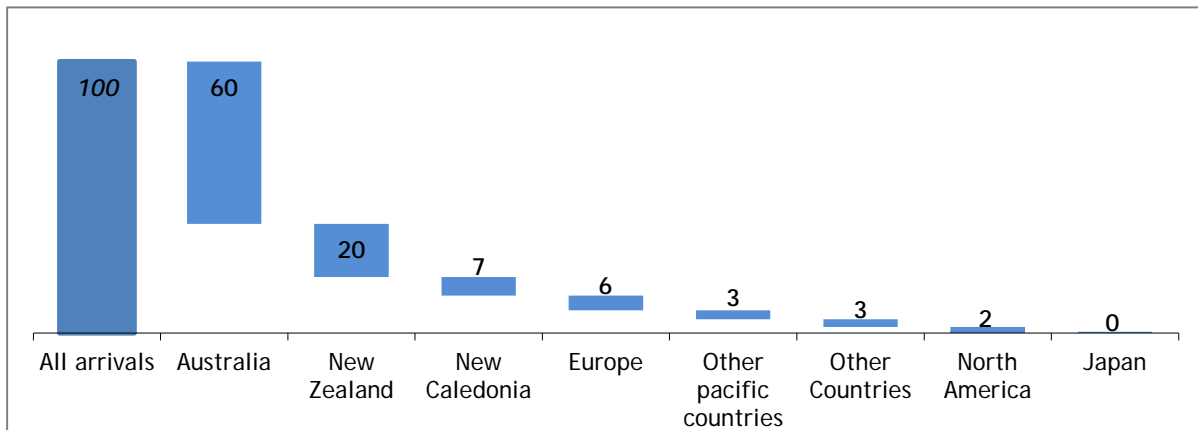
- International arrivals by air registered an increase in July 2013 as visitors slightly increase over the same month in 2012, also increasing over the previous month.
- Visitor arrivals slightly increased by 1% or 85 visitors over the corresponding month of 2012, rising from 11,770 to 11,855 visitors. Figures also rose by 6% or 649 visitors over the previous month. This increase is attributed by the rise in holiday visitors in July 2013.
- Cruise ship visitors declined over the same month in 2012 by 10%, falling from 18,595 to 16,759 visitors in July 2013 as cruise ships declined from 10 to 8 vessels. Day visitors also dropped by 19% over the previous month as cruise visits to Vanuatu declined in July 2013. Despite the decline, day visitors continue to make up the highest proportion of visitors, accounting for 59% of total international visitors.

PURPOSE OF VISIT FOR VISITORS ARRIVING BY AIR

- International visitor arrivals in July recorded 83% of visitors for Holiday. Visitors visiting friends make up 7%, Visitors attending meetings, conferences or business matters accounted for 5%, visitors arriving for other purposes make up 4% and visitors on transit to other countries at 1%.

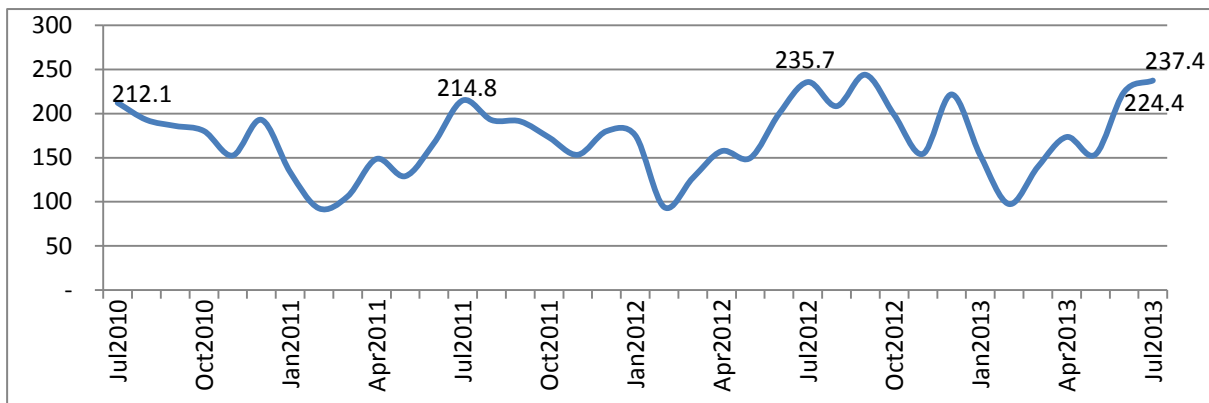
COUNTRY OF USUAL RESIDENCE FOR VISITORS ARRIVING BY AIR

Figure 2: Percentage Share of visitors in July 2013 by Country of Usual Residence



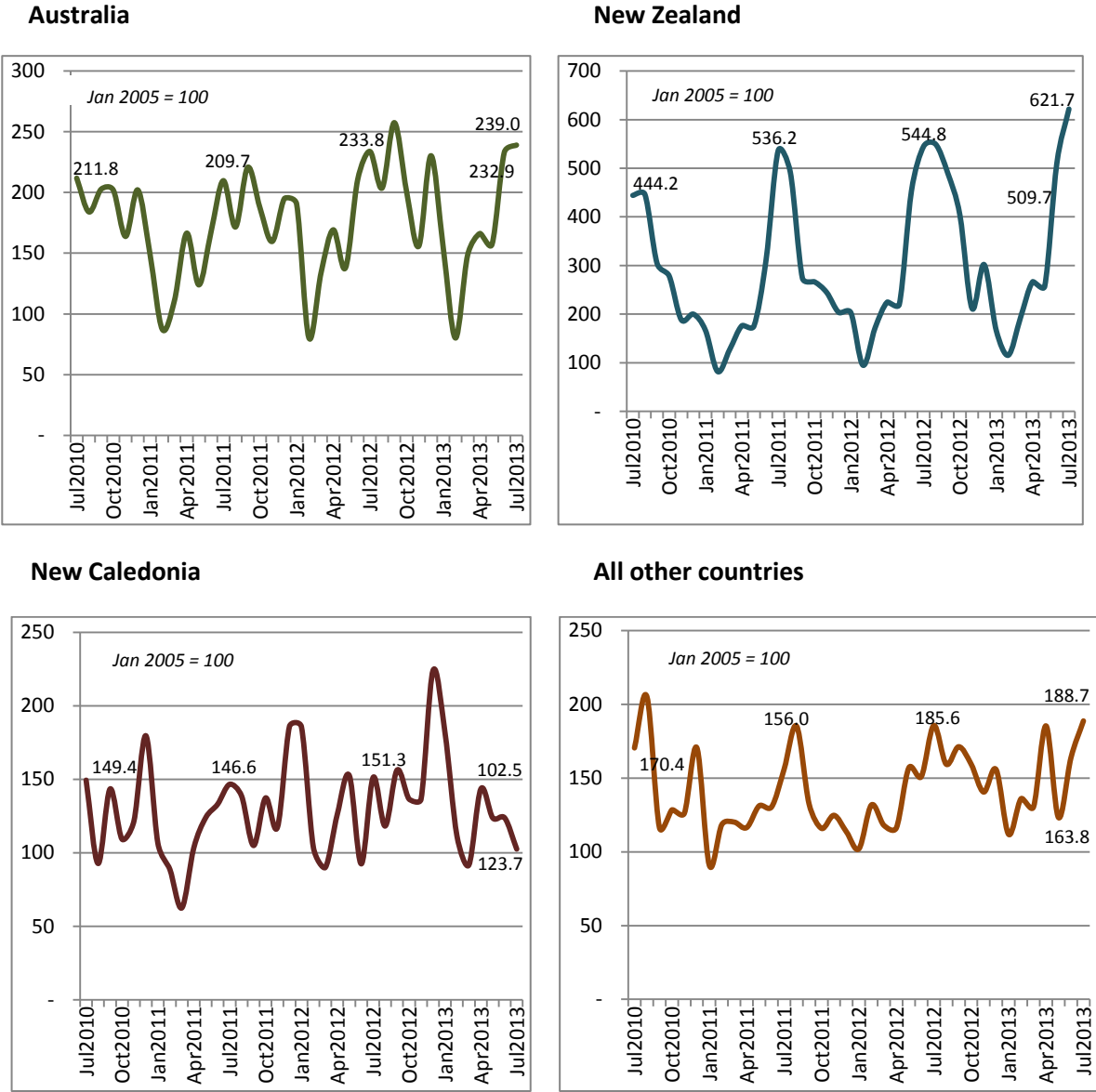
- Australian visitors remains the number one source of visitors to Vanuatu, accounting for 60%, followed By New Zealand at 20%, New Caledonia at 7%, Europe at 6%, Other Pacific countries and Other countries at 3% and North America at 2%. (Figure 2.)
- Tourism in Vanuatu is seasonal, and it is difficult to analyse changes in international arrivals and country of residence by looking at the monthly number of arrivals. Figure 3 below, shows the total number of visitor arrivals and arrivals from Australia, New Zealand, New Caledonia and all other countries combined to show trends in arrivals, with the number of visitors based on an index value of 100 in January 2005. This index allows analysis over time of the real increases and decreases in international air arrivals.

Figure 3: Index of Total Visitor Arrivals, July 2010 to July 2013 (January 2005 = 100)



- The Total visitor arrivals index shows the overall increasing trend in July 2013 compared to July 2012, where index values increased by 1% as peak period continues till August. (Figure 3)

Figure 4: Index of Visitor Arrivals and Country of Usual Residence, July 2010 to July 2013 (January 2005 = 100)



Note: the vertical axis scale varies in each country chart.

- The major tourism markets of Australia and New Zealand showed high index values as visitors continue to increase in July 2013, rising at 2% and 14% respectively when compared to the same month last year, while the New Caledonian market recorded a decline in index values at 32% over July 2012.

AVERAGE LENGTH OF STAY FOR VISITORS ARRIVING BY AIR

- International visitors in July 2013 recorded an average length of stay of 11 days, equivalent to July 2012, however figures increased by 1 day, rising from 10 days over the previous month.

AVERAGE AGE OF VISITORS ARRIVING BY AIR

- The visitors average age declined by 1 year in July 2013 over the same month last year, decreasing from 39 years to 38 years. Despite the fall, figures recorded an increase of 1 year over the previous month rising from 37 years.

CONCEPTS AND DEFINITIONS

Visitors are non-resident persons spending at least one night in Vanuatu.

Residents are persons who declare themselves to be residents or an intending resident on immigration arrival cards.

ATTACHED:

Table 1 Summary of Overseas Migration

Table 2 Visitor Arrivals by Purpose of Visit

Table 3 Visitor Arrivals by Country of Usual Residence

Table 4 Overseas Arrivals of Residents by Nationality

Table 5 Visitors Arriving by Air Intended Length of Stay

Table 6 Visitors Arriving by Air Average Age

NEXT UPDATE

August 2013

RELEASE DATE

18th October, 2013

PROVINCIAL STATISTICS OFFICES

Torba Province: (678) 5522320

Sanma Province: (678) 36542/5522316

Penama Province: (678) 5522318

Malampa Province: (678) 5522317

Tafea Province: (678) 5522319



Simil Johnson
Government Statistician

Table 1 : Summary of Overseas Migration
Tableau 1 : Résumé des échanges migratoires avec l'extérieur

Year	Month	ARRIVALS / ARRIVEES						DEPARTURES / DEPARTURES						Cruiseship Arrivals/ Croisiéristes	Année	Mois
		PORT VILA		LUGANVILLE		TOTAL		PORT VILA		LUGANVILLE		TOTAL				
		Residents Résidents	Visitors Visiteurs	Residents Résidents	Visitors Visiteurs	Residents Résidents	Visitors Visiteurs	Resident Résidents	Visitor Visiteurs	Resident Résidents	Visitors Visiteurs	Resident Résidents	Visitors Visiteurs			
2009	Jul	1,485	11,191	46	309	1,531	11,500	858	11,406	55	261	913	11,667	11,529	2009	Juil
2010	Jul	1,772	10,319	43	275	1,815	10,594	914	11,225	15	200	929	11,425	9,334	2010	Juil
2011	Jul	1,828	10,419	38	310	1,866	10,729	994	11,297	30	277	1,024	11,574	11,411	2011	Juil
	Aug	1,797	9,255	42	367	1,839	9,622	1,201	9,700	16	203	1,217	9,903	7,511		Aoû
	Sep	2,341	9,203	52	343	2,393	9,546	914	9,894	19	205	933	10,099	13,066		Sep
	Oct	1,760	8,354	55	283	1,815	8,637	1,377	10,398	13	237	1,390	10,635	7,210		Oct
	Nov	1,885	7,353	51	302	1,936	7,655	1,412	8,617	7	186	1,419	8,803	11,268		Nov
	Dec	2,436	8,727	46	263	2,482	8,990	1,419	8,135	14	104	1,433	8,239	12,388		Déc
2012	Jan	2,380	8,591	42	164	2,422	8,755	1,297	10,852	27	310	1,324	11,162	27,137	2012	Jan
	Feb	1,202	4,642	22	58	1,224	4,700	1,771	5,178	7	55	1,778	5,233	19,613		Fév
	Mar	1,515	6,152	32	191	1,547	6,343	1,143	6,449	3	111	1,146	6,560	16,851		Mar
	Apr	1,793	7,637	49	223	1,842	7,860	998	8,888	4	204	1,002	9,092	15,177		Avr
	May	2,098	7,401	8	73	2,106	7,474	1,135	7,156	-	-	1,135	7,156	17,684		Mai
	Jun	1,746	9,808	8	168	1,754	9,976	1,000	9,072	-	27	1,000	9,099	12,972		Juin
	Jul	1,869	11,471	21	299	1,890	11,770	995	12,740	14	337	1,009	13,077	18,595		Juil
	Aug	1,448	10,154	31	251	1,479	10,405	975	10,726	10	215	985	10,941	9,581		Aoû
	Sep	2,288	11,887	24	295	2,312	12,182	1,013	12,192	15	251	1,028	12,443	15,104		Sep
	Oct	1,717	9,663	29	259	1,746	9,922	1,535	11,688	11	282	1,546	11,970	26,644		Oct
	Nov	2,118	7,431	49	273	2,167	7,704	1,593	8,852	15	230	1,608	9,082	16,697		Nov
	Dec	2,420	10,774	49	296	2,469	11,070	1,348	9,365	28	317	1,376	9,682	17,188		Déc
2013	Jan	1,997	7,415	64	197	2,061	7,612	1,331	11,574	23	325	1,354	11,899	33,491	2013	Jan
	Feb	1,333	4,809	21	122	1,354	4,931	1,919	5,497	14	137	1,933	5,634	16,127		Fév
	Mar	1,656	6,825	40	152	1,696	6,977	1,465	6,799	2	155	1,467	6,954	16,060		Mar
	Apr	2,033	8,182	50	480	2,083	8,662	1,119	9,347	18	399	1,137	9,746	24,477		Avr
	May	2,222	7,327	52	343	2,274	7,670	1,337	8,232	21	302	1,358	8,534	16,817		Mai
	June	2,250	10,806	45	400	2,295	11,206	1,160	10,307	11	427	1,171	10,734	20,711		Juin
	July	2,073	11,390	44	465	2,117	11,855	1,057	12,901	9	412	1,066	13,313	16,759		Juil

Source: Immigration Department/Service de l'Immigration

- Nil or less than half final unit shown / Résultat nul ou inférieur au demi de l'unité indiquée

Table 2 : Visitor Arrivals by Purpose of Visit
Tableau 2 : Arrivées de visiteurs selon le motif du voyage

Year	Month	VISITORS/VISITEURS						Total Visitors	Année	Mois
		Holidays	Visiting Friends and relatives	Business, Meetings/ Conferences	Stop Over	Others, Education, sports				
		Vacances	Visite à des amis et à la famille	Affaires, réunions ou conférence	Escale	Autres, education, sport	Visiteurs global			
2009	Jul	10,114	483	822	47	34	11,500	2009	Juil	
2010	Jul	8,600	912	996	69	17	10,594	2010	Juil	
2011	Jul	8,799	914	912	87	17	10,729	2011	Juil	
	Aug	7,749	628	1,153	66	26	9,622		Août	
	Sep	8,076	578	820	60	12	9,546		Sep	
	Oct	6,991	642	953	51	-	8,637		Oct	
	Nov	6,228	468	907	52	-	7,655		Nov	
	Dec	7,417	1,006	533	23	11	8,990		Déc	
2012	Jan	7,280	986	457	23	9	8,755	2012	Jan	
	Feb	3,390	387	833	30	60	4,700		Fév	
	Mar	4,991	455	846	42	9	6,343		Mar	
	Apr	6,596	546	674	29	15	7,860		Avr	
	May	5,928	513	984	34	15	7,474		Mai	
	Jun	7,946	601	1,254	171	4	9,976		Juin	
	Jul	9,877	863	992	32	6	11,770		Juil	
	Aug	8,776	638	929	55	7	10,405		Août	
	Sep	10,089	640	1,350	58	45	12,182		Sep	
	Oct	8,071	586	1,192	43	30	9,922		Oct	
	Nov	6,152	491	980	59	22	7,704		Nov	
	Dec	8,989	1,204	803	26	48	11,070		Déc	
2013	Jan	6,315	596	638	63	-	7,612	2013	Jan	
	Feb	3,431	437	856	16	191	4,931		Fév	
	Mar	5,557	594	645	57	124	6,977		Mar	
	Apr	6,874	558	937	28	265	8,662		Avr	
	May	6,029	565	800	33	243	7,670		Mai	
	June	9,152	723	775	62	494	11,206		Juin	
	July	9,819	853	582	89	512	11,855		Juil	

Source: Immigration Department/Service de l'Immigration

- Nil or less than half final unit shown / résultat nul ou inférieur au demi de l'unité indiquée

Table 3 : Visitor Arrivals by Usual Country of Residence
Tableau 3 : Arrivées des visiteurs par pays de résidence habituelle

Year	Month	Australia	New Zealand	New Caledonia	Other Pacific Countries	Europe	North America	Japan	Other Countries	TOTAL	Année	Mois		
		Australie	Nouvelle-Zélande	Nouvelle-Calédonie	Autres Pays du Pacifique		Amérique du Nord	Japon	Autres pays					
2009	Jul	6,964	1,939	920	437	560	380	50	250	11,500	2009	Juil		
2010	Jul	6,283	1,657	1,173	346	615	247	41	232	10,594	2010	Juil		
2011	Jul	6,222	2,000	1,151	320	540	214	75	207	10,729	2011	Juil		
	Aug	5,090	1,835	1,088	313	760	198	91	247	9,622		Aoû		
	Sep	6,549	1,022	824	206	501	206	49	189	9,546		Sep		
	Oct	5,558	994	1,078	219	432	116	46	194	8,637		Oct		
	Nov	4,736	913	922	282	424	119	55	204	7,655		Nov		
	Dec	5,785	759	1,460	333	340	109	52	152	8,990		Déc		
	2012	Jan	5,653	757	1,458	247	341	105	49	145		8,755	2012	Jan
		Feb	2,387	354	814	403	367	130	59	186		4,700		Fév
Mar		3,970	641	707	277	332	131	52	233	6,343	Mar			
Apr		5,021	838	991	270	335	133	58	214	7,860	Avr			
May		4,091	821	1,198	454	410	219	59	222	7,474	Mai			
Jun		6,248	1,690	726	310	523	203	52	224	9,976	Juin			
Jul		6,937	2,032	1,188	433	633	216	95	236	11,770	Juil			
Aug		6,043	2,049	928	298	646	181	58	202	10,405	Aoû			
Sep		7,640	1,827	1,227	451	462	231	59	285	12,182	Sep			
Oct		5,960	1,505	1,072	334	576	216	41	218	9,922	Oct			
Nov		4,622	790	1,071	293	505	156	55	212	7,704	Nov			
Dec		6,833	1,126	1,758	543	361	173	68	208	11,070	Déc			
2013	Jan	4,591	621	1,428	231	364	135	32	210	7,612	2013	Jan		
	Feb	2,448	429	876	440	340	154	26	218	4,931		Fév		
	Mar	4,405	718	720	344	388	135	36	231	6,977		Mar		
	Apr	4,931	994	1,126	522	533	222	58	276	8,662		Avr		
	May	4,669	959	971	293	374	165	62	177	7,670		Mai		
	June	6,911	1,901	971	461	419	279	39	225	11,206		Juin		
	July	7,091	2,319	805	384	654	217	47	338	11,855		Juil		

Source: Immigration Department / Service de l'Immigration

Table 4 : Overseas Arrivals of Residents by Nationality

Tableau 4 : Arrivées des résidents par nationalité

Year	Month	Ni-Vanuatu	Australian Australien	French Français	British Anglais	New Zealander Néo- Zélandais	Asian Asiatiques	Pacific Islanders Autres pays du Pacifique	North Americans Américain du Nord	Other countries Autres pays	TOTAL	Année	Mois
2009	Jul	847	304	140	8	98	39	38	34	23	1,531	2009	Juil
2010	Jul	846	347	186	20	127	63	167	28	31	1,815	2010	Juil
2011	Jul	894	340	168	22	113	81	182	28	38	1,866	2011	Juil
	Aug	1,030	327	144	12	130	58	87	28	23	1,839		Aoû
	Sep	1,662	300	119	17	94	51	78	30	42	2,393		Sep
	Oct	846	402	179	29	159	65	56	58	21	1,815		Oct
	Nov	1,199	322	126	29	87	67	52	26	28	1,936		Nov
	Dec	1,659	315	163	17	100	69	116	26	17	2,482		Déc
2012	Jan	1,617	306	159	17	107	59	115	26	16	2,422	2012	Jan
	Feb	619	232	76	15	119	46	67	29	21	1,224		Fév
	Mar	783	307	147	24	109	70	52	23	32	1,547		Mar
	Apr	1,112	327	102	15	110	76	41	37	22	1,842		Avr
	May	1,348	330	164	10	107	60	43	27	17	2,106		Mai
	June	1,139	255	97	21	91	69	46	18	18	1,754		Juin
	Jul	1,155	288	185	21	94	44	50	37	16	1,890		Juil
	Aug	814	282	105	18	90	51	47	41	31	1,479		Aoû
	Sep	1,650	283	98	11	109	57	44	30	30	2,312		Sep
	Oct	948	378	137	15	86	62	61	24	35	1,746		Oct
	Nov	1,442	304	146	18	99	36	56	35	31	2,167		Nov
	Dec	1,690	337	110	18	115	66	64	43	26	2,469		Déc
2013	Jan	983	391	236	18	158	73	116	51	35	2,061	2013	Jan
	Feb	688	270	93	12	84	62	87	26	32	1,354		Fév
	Mar	915	322	124	16	120	74	63	33	29	1,696		Mar
	Apr	1,259	352	160	21	114	63	56	30	28	2,083		Avr
	May	1,559	297	110	17	99	70	48	34	40	2,274		Mai
	June	1,386	353	153	31	124	94	83	44	27	2,295		Juin
	July	1,074	390	162	33	112	75	192	41	38	2,117		Juil

Source: Immigration Department / Service de l'Immigration

Table 5 : Visitors Arriving by Air Intended Length of Stay

Tableau 5 : Arrivée des Visiteurs à longue durée de Séjour

Year	Month	AVERAGE INTENDED LENGTH OF STAY / LA MOYENNE DE LONGUE DUREE DE SEJOUR			Année	Mois
		Port Vila	Luganville	Vanuatu		
2010	Jul	9.1	11.4	10.3	2010	Juil
2011	Jan	8.6	9.4	9.0	2011	Jan
	Feb	8.4	11.4	9.9		Fév
	Mar	8.8	8.3	8.6		Mar
	Apr	8.2	13.8	11.0		Apr
	May	9.1	10.4	9.8		Mai
	Jun	8.6	12.6	10.6		Juin
	Jul	9.0	10.4	9.7		Juil
	Aug	9.0	10.8	9.9		Août
	Sep	8.7	9.6	9.2		Sep
	Oct	8.0	9.0	8.5		Oct
	Nov	8.1	11.0	9.6		Nov
	Dec	12.0	13.5	12.8		Déc
2012	Jan	10.3	11.1	10.7	2012	Jan
	Feb	9.3	10.7	10.0		Fév
	Mar	9.7	11.2	10.5		Mar
	Apr	9.7	10.8	10.2		Apr
	May	9.8	12.6	11.2		Mai
	Jun	9.5	11.7	10.6		Juin
	Jul	11.4	11.5	11.5		Juil
	Aug	10.4	10.5	10.5		Août
	Sep	9.5	11.0	10.3		Sep
	Oct	10.4	10.5	10.5		Oct
	Nov	8.9	9.0	9.0		Nov
	Dec	8.9	12.7	10.8		Déc
2013	Jan	11.6	11.2	11.4	2013	Jan
	Feb	15.6	9.4	12.5		Fév
	Mar	10.1	11.2	10.6		Mar
	Apr	10.7	10.8	10.8		Avr
	May	9.5	12.6	11.0		Mai
	June	9.2	11.7	10.4		Juin
	July	10.0	12.0	11.0		Juil

Source: Immigration Department/Service de l'Immigration

Table 6 : Visitors Arriving by Air Average Age
Tableau 6 : Arrivée des Visiteurs par Age moyen

Year	Month	AVERAGE AGE OF VISITORS / L'AGE MOYEN DES VISITEURS			Année	Mois
		Port Vila	Luganville	Vanuatu		
2010	Jul	40.2	40.4	40.3	2010	Juil
2011	Jan	32.9	38.4	35.7	2011	Jan
	Feb	35.4	43.5	39.4		Fév
	Mar	41.0	45.3	43.2		Mar
	Apr	37.0	21.9	29.5		Apr
	May	40.9	47.2	44.1		Mai
	Jun	39.8	39.4	39.6		Juin
	Jul	38.3	41.5	39.9		Juil
	Aug	41.4	36.7	39.0		Aoû
	Sep	38.6	43.1	40.9		Sep
	Oct	39.2	40.7	39.9		Oct
	Nov	38.7	36.8	37.7		Nov
	Dec	44.8	37.0	40.9		Déc
2012	Jan	34.0	36.5	35.2	2012	Jan
	Feb	38.7	45.9	42.3		Fév
	Mar	38.0	42.9	40.5		Mar
	Apr	38.0	42.9	40.5		Avr
	May	39.7	53.3	46.5		Mai
	Jun	37.9	29.7	33.8		Juin
	Jul	38.4	41.0	39.7		Juil
	Aug	41.5	46.5	44.0		Aoû
	Sep	36.5	38.3	37.4		Sep
	Oct	41.5	46.5	44.0		Oct
	Nov	36.6	41.6	39.1		Nov
	Dec	36.6	36.9	36.8		Déc
2013	Jan	35.4	44.2	39.8	2013	Jan
	Feb	32.0	46.4	39.2		Fév
	Mar	37.0	41.5	39.2		Mar
	Apr	38.1	34.4	36.2		Avr
	May	41.7	46.7	44.2		Mai
	June	37.0	37.5	37.2		Juin
	July	34.6	41.5	38.0		Juil

Source: Immigration Department/Service de l'Immigration