

STATISTICS UPDATE: INTERNATIONAL MIGRATION



JUNE 2013 HIGHLIGHTS

OVERVIEW

Figure 1: Air and Day visitors: June 2012 to June 2013



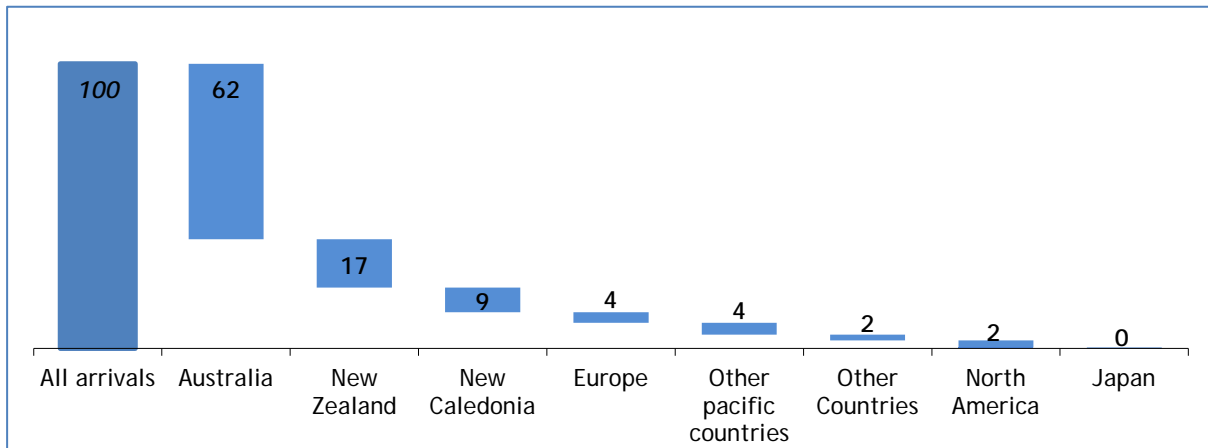
- June 2013 statistics recorded an increase of international visitor arrivals over the corresponding month of 2012, figures also increased when compared to the previous month of May 2013.
- Visitors by air recorded an increase of 12% over the same month of 2012, rising from 9,976 to 11,206 visitors. Figures also increased when compared to the previous month of May by 46% rising from 7,670 visitors. This increase was attributed by the start of the peak period in tourist arrivals for holiday.
- Cruise ship arrivals also increased at 60% over June 2012 rising to 20,711 visitors, as cruise ships increased to 10 compared to 8 vessels in June 2012. Meanwhile most visitors prefer to travel by cruise ship for holidays with 2 out of 3 or 65% visitors arriving by cruise ship in June 2013.

PURPOSE OF VISIT FOR VISITORS ARRIVING BY AIR

- In June 2013, holiday visitors accounted for 82% of total visitor arrivals by air. Visitors travelling for business, meetings or conferences make up 7%, visitors visiting friends and families at 6%, others, education or sports at 4% and visitors for transit to other countries at 1%.

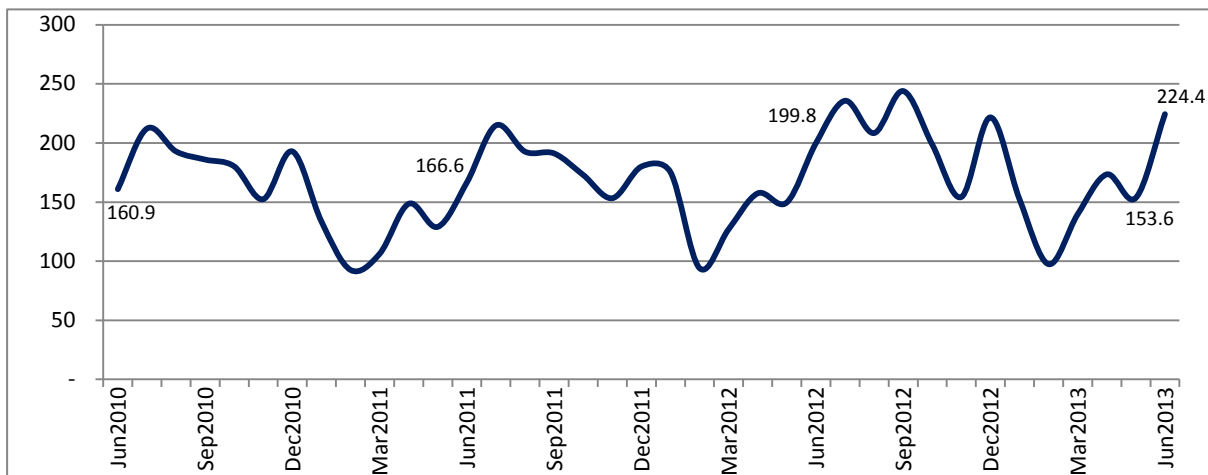
COUNTRY OF USUAL RESIDENCE FOR VISITORS ARRIVING BY AIR

Figure 2: Share of visitors by Country of Usual Residence, percentage of visitors in June 2013



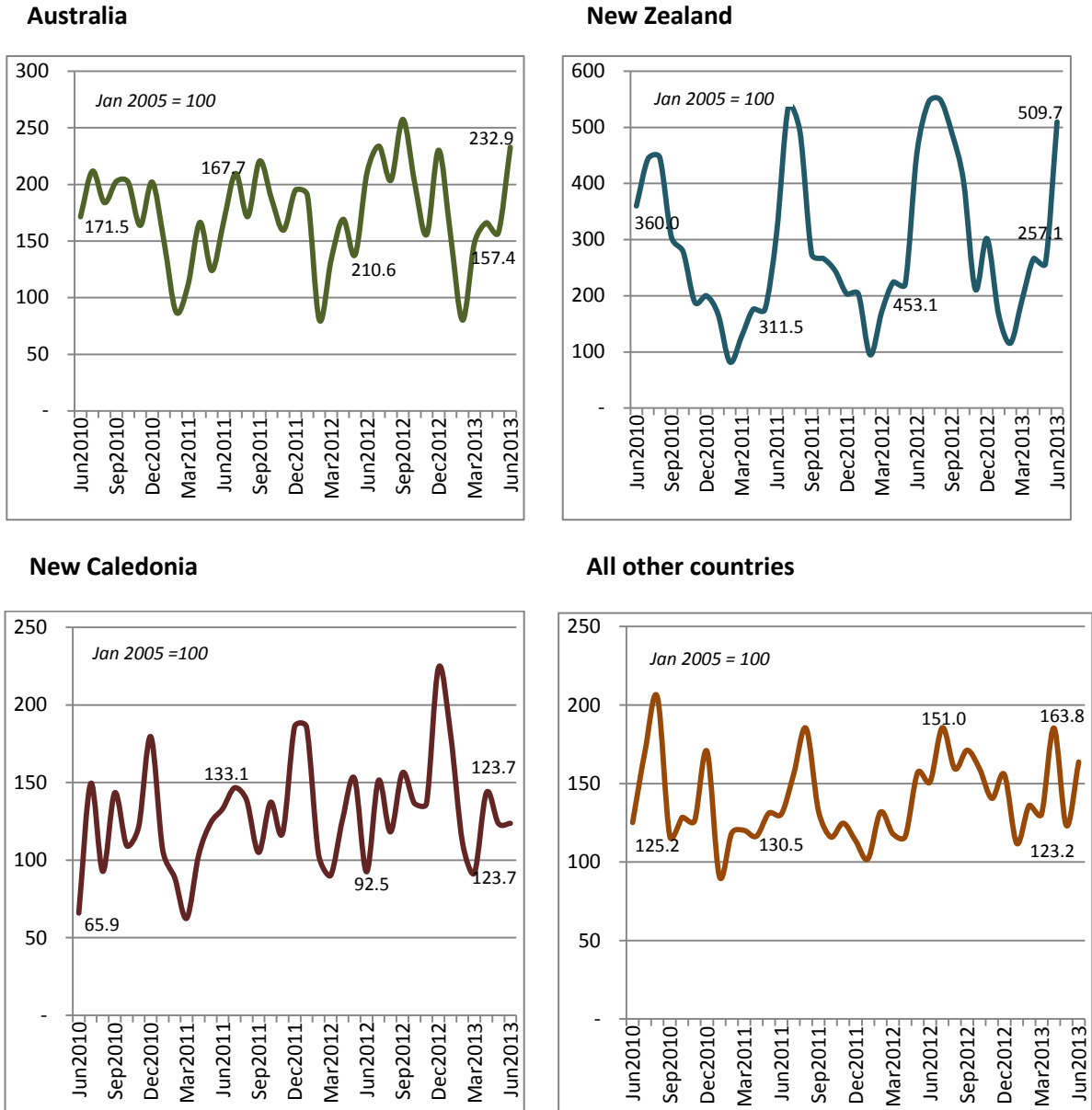
- Australian visitors continue to dominate the total number of international visitors to Vanuatu, accounting for 62%, followed by New Zealand at 17%, New Caledonia at 9%, other Pacific countries and Europe at 4% each, and North America and Other countries at 2%. (Figure 2.)
- Tourism in Vanuatu is seasonal, and it is difficult to analyse changes in international arrivals and country of residence by looking at the monthly number of arrivals. Figure 3 below, shows the total number of visitor arrivals and arrivals from Australia, New Zealand, New Caledonia and all other countries combined to show trends in arrivals, with the number of visitors based on an index value of 100 in January 2005. This index allows analysis over time of the real increases and decreases in international air arrivals.

Figure 3: Index of Total Visitor Arrivals, June 2010 to June 2013 (January 2005 = 100)



- Figure 3 shows overall trend for increasing visitor arrivals in June 2013 compared to June 2012, where index values showed an increase of 12% as peak season for tourist arrivals commences in June till August.

Figure 4: Index of Visitor Arrivals and Country of Usual Residence, June 2010 to June 2013 (January 2005 = 100)



Note: the vertical axis scale varies in each country chart.

- The 3 major tourism markets of New Caledonia, New Zealand and Australia showed higher index values as visitor arrivals increased in June 2013, rising at 34%, 12% and 11% respectively when compared to June 2012.

AVERAGE LENGTH OF STAY FOR VISITORS ARRIVING BY AIR

- June 2013 figures showed that average length of stay remained unchanged at 10 days when compared to June 2012. Figures however declined by 1 day when compared to the previous month.

AVERAGE AGE OF VISITORS ARRIVING BY AIR

- June 2013 statistics recorded an increase of visitor's average age to 37.2 years rising from 33.8 years in June 2012. Figures however showed a decline of 7 years when compared to the previous month.

CONCEPTS AND DEFINITIONS

Visitors are non-resident persons spending at least one night in Vanuatu.

Residents are persons who declare themselves to be residents or an intending resident on immigration arrival cards.

ATTACHED:

Table 1 Summary of Overseas Migration

Table 2 Visitor Arrivals by Purpose of Visit

Table 3 Visitor Arrivals by Country of Usual Residence

Table 4 Overseas Arrivals of Residents by Nationality

Table 5 Visitors Arriving by Air Intended Length of Stay

Table 6 Visitors Arriving by Air Average Age

NEXT UPDATE

July 2013

RELEASE DATE

21st September, 2013

MORE INFORMATION

For statistical enquiries about this topic, please contact:

National Statistics Office: (678) 22110/22111 – email: stats@vanuatu.gov.vu

PROVINCIAL STATISTICS OFFICES

Torba Province: (678) 5522320

Sanma Province: (678) 36542/5522316

Penama Province: (678) 5522318

Malampa Province: (678) 5522317

Tafea Province: (678) 5522319



Simil Johnson
Government Statistician

Table 1 : Summary of Overseas Migration
Tableau 1 : Résumé des échanges migratoires avec l'extérieur

Year	Month	ARRIVALS / ARRIVEES						DEPARTURES / DEPARTURES						Cruiseship Arrivals/ Croisiéristes	Année	Mois
		PORT VILA		LUGANVILLE		TOTAL		PORT VILA		LUGANVILLE		TOTAL				
		Residents Résidents	Visitors Visiteurs	Residents Résidents	Visitors Visiteurs	Residents Résidents	Visitors Visiteurs	Resident Résidents	Visitor Visiteurs	Resident Résidents	Visitors Visiteurs	Resident Résidents	Visitors Visiteurs			
2009	Jun	1,812	7,197	59	306	1,871	7,503	442	4,263	41	166	483	4,429	3,954	2009	Juin
2010	Jun	1,793	7,750	37	285	1,830	8,035	824	7,503	10	111	834	7,614	12,984	2010	Juin
2011	Jun	1,818	8,053	38	265	1,856	8,318	778	7,903	3	54	781	7,957	18,363	2011	Juin
	Jul	1,828	10,419	38	310	1,866	10,729	994	11,297	30	277	1,024	11,574	11,411		Juil
	Aug	1,797	9,255	42	367	1,839	9,622	1,201	9,700	16	203	1,217	9,903	7,511		Aoû
	Sep	2,341	9,203	52	343	2,393	9,546	914	9,894	19	205	933	10,099	13,066		Sep
	Oct	1,760	8,354	55	283	1,815	8,637	1,377	10,398	13	237	1,390	10,635	7,210		Oct
	Nov	1,885	7,353	51	302	1,936	7,655	1,412	8,617	7	186	1,419	8,803	11,268		Nov
	Dec	2,436	8,727	46	263	2,482	8,990	1,419	8,135	14	104	1,433	8,239	12,388		Déc
2012	Jan	2,380	8,591	42	164	2,422	8,755	1,297	10,852	27	310	1,324	11,162	27,137	2012	Jan
	Feb	1,202	4,642	22	58	1,224	4,700	1,771	5,178	7	55	1,778	5,233	19,613		Fév
	Mar	1,515	6,152	32	191	1,547	6,343	1,143	6,449	3	111	1,146	6,560	16,851		Mar
	Apr	1,793	7,637	49	223	1,842	7,860	998	8,888	4	204	1,002	9,092	15,177		Avr
	May	2,098	7,401	8	73	2,106	7,474	1,135	7,156	-	-	1,135	7,156	17,684		Mai
	Jun	1,746	9,808	8	168	1,754	9,976	1,000	9,072	-	27	1,000	9,099	12,972		Juin
	Jul	1,869	11,471	21	299	1,890	11,770	995	12,740	14	337	1,009	13,077	18,595		Juil
	Aug	1,448	10,154	31	251	1,479	10,405	975	10,726	10	215	985	10,941	9,581		Aug
	Sep	2,288	11,887	24	295	2,312	12,182	1,013	12,192	15	251	1,028	12,443	15,104		Sep
	Oct	1,717	9,663	29	259	1,746	9,922	1,535	11,688	11	282	1,546	11,970	26,644		Oct
	Nov	2,118	7,431	49	273	2,167	7,704	1,593	8,852	15	230	1,608	9,082	16,697		Nov
	Dec	2,420	10,774	49	296	2,469	11,070	1,348	9,365	28	317	1,376	9,682	17,188		Dec
2013	Jan	1,997	7,415	64	197	2,061	7,612	1,331	11,574	23	325	1,354	11,899	33,491	2013	Jan
	Feb	1,333	4,809	21	122	1,354	4,931	1,919	5,497	14	137	1,933	5,634	16,127		Fév
	Mar	1,656	6,825	40	152	1,696	6,977	1,465	6,799	2	155	1,467	6,954	16,060		Mar
	Apr	2,033	8,182	50	480	2,083	8,662	1,119	9,347	18	399	1,137	9,746	24,477		Apr
	May	2,222	7,327	52	343	2,274	7,670	1,337	8,232	21	302	1,358	8,534	16,817		May
	June	2,250	10,806	45	400	2,295	11,206	1,160	10,307	11	427	1,171	10,734	20,711		June

Source: Immigration Department/Service de l'Immigration

- Nil or less than half final unit shown / Résultat nul ou inférieur au demi de l'unité indiquée

r Revised / Données rectifiées

Table 2 : Visitor Arrivals by Purpose of Visit
Tableau 2 : Arrivées de visiteurs selon le motif du voyage

Year	Month	VISITORS/VISITEURS						Total Visitors	Année	Mois
		Holidays	Visiting Friends and relatives	Business, Meetings/ Conferences	Stop Over	Others, Education, sports				
		Vacances	Visite à des amis et à la famille	Affaires, réunions ou conférence	Escale	Autres, education, sport	Visiteurs global			
2009	Jun	5,826	869	786	-	22	7,503	2009	Juin	
2010	Jun	6,394	709	862	71	-	8,035	2010	Juin	
2011	Jun	6,627	643	942	85	21	8,318	2011	Juin	
	Jul	8,799	914	912	87	17	10,729		Juil	
	Aug	7,749	628	1,153	66	26	9,622		Août	
	Sep	8,076	578	820	60	12	9,546		Sep	
	Oct	6,991	642	953	51	-	8,637		Oct	
	Nov	6,228	468	907	52	-	7,655		Nov	
	Dec	7,417	1,006	533	23	11	8,990		Déc	
2012	Jan	7,280	986	457	23	9	8,755	2012	Jan	
	Feb	3,390	387	833	30	60	4,700		Fév	
	Mar	4,991	455	846	42	9	6,343		Mar	
	Apr	6,596	546	674	29	15	7,860		Avr	
	May	5,928	513	984	34	15	7,474		Mai	
	Jun	7,946	601	1,254	171	4	9,976		Juin	
	Jul	9,877	863	992	32	6	11,770		Juil	
	Aug	8,776	638	929	55	7	10,405		Août	
	Sep	10,089	640	1,350	58	45	12,182		Sep	
	Oct	8,071	586	1,192	43	30	9,922		Oct	
	Nov	6,152	491	980	59	22	7,704		Nov	
	Dec	8,989	1,204	803	26	48	11,070		Déc	
2013	Jan	6,315	596	638	63	-	7,612	2013	Jan	
	Feb	3,431	437	856	16	191	4,931		Fév	
	Mar	5,557	594	645	57	124	6,977		Mar	
	Apr	6,874	558	937	28	265	8,662		Avr	
	May	6,029	565	800	33	243	7,670		May	
	June	9,152	723	775	62	494	11,206		June	

Source: Immigration Department/Service de l'Immigration

- Nil or less than half final unit shown / résultat nul ou inférieur au demi de l'unité indiquée

Table 3 : Visitor Arrivals by Usual Country of Residence
Tableau 3 : Arrivées des visiteurs par pays de résidence habituelle

Year	Month	Australia	New Zealand	New Caledonia	Other Pacific Countries	Europe	North America	Japan	Other Countries	TOTAL	Année	Mois
		Australie	Nouvelle-Zélande	Nouvelle-Calédonie	Autres Pays du Pacifique		Amérique du Nord	Japon	Autres pays			
2009	Jun	5,098	1,083	367	229	319	215	40	152	7,503	2009	Juin
2010	Jun	5,087	1,343	517	317	322	195	43	210	8,035	2010	Juin
2011	Jun	4,977	1,162	1,045	223	467	248	43	153	8,318	2011	Juin
	Jul	6,222	2,000	1,151	320	540	214	75	207	10,729		Juil
	Aug	5,090	1,835	1,088	313	760	198	91	247	9,622		Aoû
	Sep	6,549	1,022	824	206	501	206	49	189	9,546		Sep
	Oct	5,558	994	1,078	219	432	116	46	194	8,637		Oct
	Nov	4,736	913	922	282	424	119	55	204	7,655		Nov
	Dec	5,785	759	1,460	333	340	109	52	152	8,990		Déc
2012	Jan	5,653	757	1,458	247	341	105	49	145	8,755	2012	Jan
	Feb	2,387	354	814	403	367	130	59	186	4,700		Fév
	Mar	3,970	641	707	277	332	131	52	233	6,343		Mar
	Apr	5,021	838	991	270	335	133	58	214	7,860		Avr
	May	4,091	821	1,198	454	410	219	59	222	7,474		Mai
	Jun	6,248	1,690	726	310	523	203	52	224	9,976		Juin
	Jul	6,937	2,032	1,188	433	633	216	95	236	11,770		Juil
	Aug	6,043	2,049	928	298	646	181	58	202	10,405		Aoû
	Sep	7,640	1,827	1,227	451	462	231	59	285	12,182		Sep
	Oct	5,960	1,505	1,072	334	576	216	41	218	9,922		Oct
	Nov	4,622	790	1,071	293	505	156	55	212	7,704		Nov
	Dec	6,833	1,126	1,758	543	361	173	68	208	11,070		Déc
2013	Jan	4,591	621	1,428	231	364	135	32	210	7,612	2013	Jan
	Feb	2,448	429	876	440	340	154	26	218	4,931		Fév
	Mar	4,405	718	720	344	388	135	36	231	6,977		Mar
	Apr	4,931	994	1,126	522	533	222	58	276	8,662		Avr
	May	4,669	959	971	293	374	165	62	177	7,670		May
	June	6,911	1,901	971	461	419	279	39	225	11,206		June

Source: Immigration Department / Service de l'Immigration

Table 4 : Overseas Arrivals of Residents by Nationality

Tableau 4 : Arrivées des résidents par nationalité

Year	Month	Ni-Vanuatu	Australian Australien	French Français	British Anglais	New Zealander Néo- Zélandais	Asian Asiatiques	Pacific Islanders Autres pays du Pacifique	North Americans Américain du Nord	Other countries Autres pays	TOTAL	Année	Mois
2009	Jun	1,321	239	99	15	85	26	32	25	30	1,871	2009	Juin
2010	Jun	1,206	268	101	15	100	38	51	29	21	1,830	2010	Juin
2011	Jun	1,188	279	133	19	102	58	30	30	17	1,856	2011	Juin
	Jul	894	340	168	22	113	81	182	28	38	1,866		Juil
	Aug	1,030	327	144	12	130	58	87	28	23	1,839		Aoû
	Sep	1,662	300	119	17	94	51	78	30	42	2,393		Sep
	Oct	846	402	179	29	159	65	56	58	21	1,815		Oct
	Nov	1,199	322	126	29	87	67	52	26	28	1,936		Nov
	Dec	1,659	315	163	17	100	69	116	26	17	2,482		Déc
2012	Jan	1,617	306	159	17	107	59	115	26	16	2,422	2012	Jan
	Feb	619	232	76	15	119	46	67	29	21	1,224		Fév
	Mar	783	307	147	24	109	70	52	23	32	1,547		Mar
	Apr	1,112	327	102	15	110	76	41	37	22	1,842		Avr
	May	1,348	330	164	10	107	60	43	27	17	2,106		Mai
	June	1,139	255	97	21	91	69	46	18	18	1,754		Juin
	Jul	1,155	288	185	21	94	44	50	37	16	1,890		Juil
	Aug	814	282	105	18	90	51	47	41	31	1,479		Aoû
	Sep	1,650	283	98	11	109	57	44	30	30	2,312		Sep
	Oct	948	378	137	15	86	62	61	24	35	1,746		Oct
	Nov	1,442	304	146	18	99	36	56	35	31	2,167		Nov
	Dec	1,690	337	110	18	115	66	64	43	26	2,469		Dec
2013	Jan	983	391	236	18	158	73	116	51	35	2,061	2013	Jan
	Feb	688	270	93	12	84	62	87	26	32	1,354		Fév
	Mar	915	322	124	16	120	74	63	33	29	1,696		Mar
	Apr	1,259	352	160	21	114	63	56	30	28	2,083		Avr
	May	1,559	297	110	17	99	70	48	34	40	2,274		May
	June	1,386	353	153	31	124	94	83	44	27	2,295		June

Source: Immigration Department / Service de l'Immigration

Table 5 : Visitors Arriving by Air Intended Length of Stay

Tableau 5 : Arrivée des Visiteurs à longue durée de Séjour

Year	Month	AVERAGE INTENDED LENGTH OF STAY / LA MOYENNE DE LONGUE DUREE DE SEJOUR			Année	Mois
		Port Vila	Luganville	Vanuatu		
2010	Jun	9.2	15.2	12.2	2010	Juin
2011	Jan	8.6	9.4	9.0	2011	Jan
	Feb	8.4	11.4	9.9		Fév
	Mar	8.8	8.3	8.6		Mar
	Apr	8.2	13.8	11.0		Apr
	May	9.1	10.4	9.8		Mai
	Jun	8.6	12.6	10.6		Juin
	Jul	9.0	10.4	9.7		Juil
	Aug	9.0	10.8	9.9		Août
	Sep	8.7	9.6	9.2		Sep
	Oct	8.0	9.0	8.5		Oct
	Nov	8.1	11.0	9.6		Nov
	Dec	12.0	13.5	12.8		Déc
2012	Jan	10.3	11.1	10.7	2012	Jan
	Feb	9.3	10.7	10.0		Fév
	Mar	9.7	11.2	10.5		Mar
	Apr	9.7	10.8	10.2		Apr
	May	9.8	12.6	11.2		Mai
	Jun	9.5	11.7	10.6		Juin
	Jul	11.4	11.5	11.5		Juil
	Aug	10.4	10.5	10.5		Août
	Sep	9.5	11.0	10.3		Sep
	Oct	10.4	10.5	10.5		Oct
	Nov	8.9	9.0	9.0		Nov
	Dec	8.9	12.7	10.8		Dec
2013	Jan	11.6	11.2	11.4	2013	Jan
	Feb	15.6	9.4	12.5		Fév
	Mar	10.1	11.2	10.6		Mar
	Apr	10.7	10.8	10.8		Avr
	May	9.5	12.6	11.0		May
	June	9.2	11.7	10.4		June

Source: Immigration Department/Service de l'Immigration

Table 6 : Visitors Arriving by Air Average Age
Tableau 6 : Arrivée des Visiteurs par Age moyen

Year	Month	AVERAGE AGE OF VISITORS / L'AGE MOYEN DES VISITEURS			Année	Mois
		Port Vila	Luganville	Vanuatu		
2010	Jun	37.8	33.5	35.7	2010	Juin
2011	Jan	32.9	38.4	35.7	2011	Jan
	Feb	35.4	43.5	39.4		Fév
	Mar	41.0	45.3	43.2		Mar
	Apr	37.0	21.9	29.5		Apr
	May	40.9	47.2	44.1		Mai
	Jun	39.8	39.4	39.6		Juin
	Jul	38.3	41.5	39.9		Juil
	Aug	41.4	36.7	39.0		Août
	Sep	38.6	43.1	40.9		Sep
	Oct	39.2	40.7	39.9		Oct
	Nov	38.7	36.8	37.7		Nov
	Dec	44.8	37.0	40.9		Déc
2012	Jan	34.0	36.5	35.2	2012	Jan
	Feb	38.7	45.9	42.3		Fév
	Mar	38.0	42.9	40.5		Mar
	Apr	38.0	42.9	40.5		Avr
	May	39.7	53.3	46.5		Mai
	Jun	37.9	29.7	33.8		Juin
	Jul	38.4	41.0	39.7		Juil
	Aug	41.5	46.5	44.0		Aug
	Sep	36.5	38.3	37.4		Sep
	Oct	41.5	46.5	44.0		Oct
	Nov	36.6	41.6	39.1		Nov
	Dec	36.6	36.9	36.8		Déc
2013	Jan	35.4	44.2	39.8	2013	Jan
	Feb	32.0	46.4	39.2		Fév
	Mar	37.0	41.5	39.2		Mar
	Apr	38.1	34.4	36.2		Avr
	May	41.7	46.7	44.2		May
	June	37.0	37.5	37.2		June

Source: Immigration Department/Service de l'Immigration