

## PREFACE

The Vanuatu National Statistics Office (VNSO) is pleased to publish the Quarterly Statistical Indicators (QSI) for the June Quarter of 2014.

This report contains a wide range of statistics, collected and processed by the VNSO from a variety of sources.

The Quarterly Statistical Indicators contains only a small fraction of available official statistics. More detailed information on different topics and tables of special interest can be obtained from other publications (refer to the list at the end of this QSI), or directly from the VNSO databases.

Should you require more information on these indicators, our staff is always here to assist you.



**Simil Johnson**  
Government Statistician

1<sup>st</sup> October 2014

---

### Vanuatu National Statistics Office

Private Mail Bag 9019  
PORT VILA  
Vanuatu  
Tel: (678) 22110/22111  
Fax: (678) 24583  
E-mail: [stats@vanuatu.gov.vu](mailto:stats@vanuatu.gov.vu)  
Website: [www.vnsso.gov.vu](http://www.vnsso.gov.vu)

P. O. Box 273  
LUGANVILLE  
Santo  
Tel / Fax: (678) 36542

### Provincial Statistics Office

PO Box 22  
Lakatoro, Malekula  
MALAMPA  
PROVINCE

Commercial Center  
Lenakel, Tanna  
TAFEA PROVINCE

PO Box 8  
Saratamata, Ambae  
PENAMA PROVINCE

Sola, Vanua Lava  
Banks group  
TORBA PROVINCE

Millennium Building  
Luganville, Santo  
SANMA PROVINCE

# CONTENTS

---

Table		Page
	<b>OVERVIEW</b>	<b>1</b>
1.2	<b>PRODUCTION</b>	<b>7</b>
	Cattle	
2	<b>COMMUNICATION</b>	<b>8</b>
	Postal Services	
3	<b>ENERGY</b>	<b>9</b>
	Electricity Consumption	
4.1 – 4.4	<b>PRICE INDICES</b>	<b>13</b>
	CPI for Vila and Luganville, by Expenditure Group	
5.1 – 5.2	<b>GOVERNMENT FINANCE STATISTICS</b>	<b>15</b>
	Summary of Revenue and Expenditure	
6.1 – 6.8	<b>OVERSEAS TRADE</b>	<b>23</b>
	Value and Volume of Exports, by Main Products; by Country of Destination; Value of Imports, by SITC; by Country of Consignment.	
7.1 – 7.4	<b>TOURISM</b>	<b>27</b>
	Summary of Tourism Statistics; Visitors Arrivals by Purpose, Arrivals by Country of Usual Residence;	
8	<b>EXCHANGE RATES</b>	<b>28</b>
	Exchange Rates: Average of rates used by the collector of Customs Department	
10	<b>TRANSPORT</b>	<b>29</b>
	Private Motor Vehicles Registration	
11	<b>EMPLOYMENT</b>	<b>30</b>
	Number of Provident Fund contributing members	
12	<b>List of statistical publications</b>	<b>31</b>

**Symbols:**

The interpretation of the symbols used throughout this publication is as follows:

<b>n.a.</b>	not available	<b>e</b>	estimate
<b>r</b>	revised	<b>p</b>	provisional
<b>t</b>	Metric Tonne	<b>-</b>	nil
<b>0</b>	less than half final unit shown		
<b>N.E.C.</b>	Not elsewhere classified	<b>Vt</b>	Vatu

**Notes:**

- All data are from the Vanuatu National Statistics Office unless otherwise stated.

**Symboles:**

Les symboles utilisés dans la publication doivent être interprétés comme suit:

<b>n.a.</b>	non disponible	<b>e</b>	donnée estimée
<b>r</b>	donnée rectifié	<b>p</b>	provisoire
<b>t</b>	Tonne	<b>-</b>	résultat nul
<b>0</b>	inférieur au demi de l'unité indiquée		
<b>N.C.A.</b>	Non classifié ailleurs	<b>Vt</b>	Vatu

**Notes:**

- Toutes les données proviennent du Bureau National des Statistiques du Vanuatu, autrement la source est indiquée.
- Pour des raisons de commodité, le système de notation numérique anglo-saxon a été conservé dans les tableaux. La virgule, qui indique normalement la séparation entre la partie entière et la partie décimale d'un nombre dans le système francophone est remplacée par le point. La virgule est employée ici pour séparer les groupes de trois chiffres dans les grands nombres.

# OVERVIEW

## Cattle Production (refer to Table 1.2)

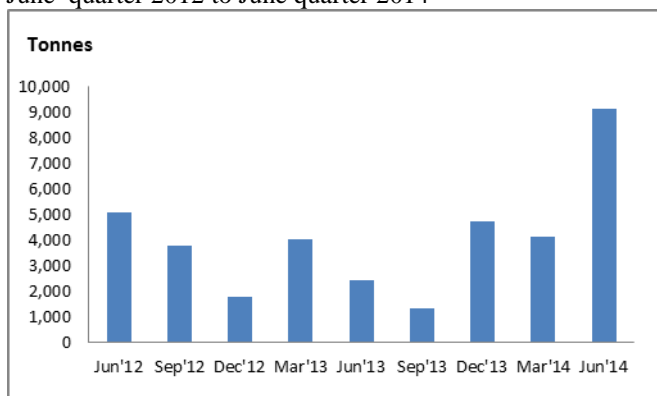
- Total number of cattle heads slaughtered by abattoirs stood at 3,812 heads in June quarter 2014, showing a decline of 7% over the corresponding quarter in 2013 but an increase of 3% over the previous quarter. The decrease in cattle slaughter over June quarter 2013 was due to decreases in cattle slaughter in both Port Vila and Luganville abattoirs.

## Copra Exports (refer to Tables 6.2, 6.3 and 6.4)

- Copra exports increased significantly in quantity from 2,438 to 9,102 tonnes in the June quarter of 2014, recording an excess of 6,664 tonnes compared to June quarter of 2013.
- In Value terms, copra exports rose to VT593 million, representing an excess of VT511 million in the June quarter of 2014 compared to VT83 million in June quarter of 2013.
- Copra export receipts constituted 36% share of the total domestic exports value in the June quarter of 2014.

### Copra Exports

Quantity in tonnes  
June quarter 2012 to June quarter 2014



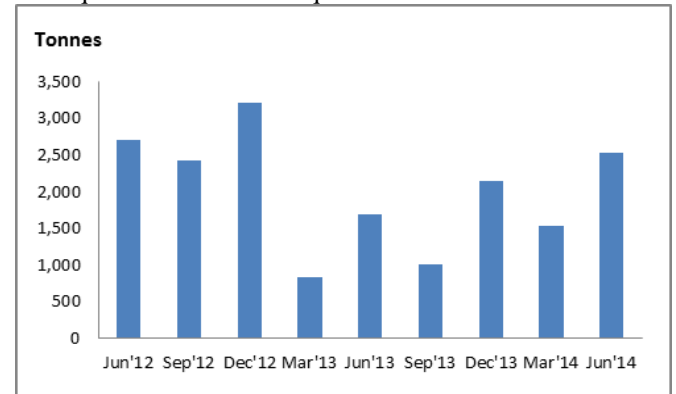
## Coconut Oil (refer to Tables 6.2 and 6.3)

- Coconut oil exports increased in volume by 49% or 834 tonnes from 1,689 to 2,523 tonnes in the June quarter of 2014 over the same quarter of 2013.
- In value terms coconut oil exports in June quarter 2014 increased by VT144 million to VT240 million over the June quarter of 2013 from VT95 million.

- Coconut oil receipts constituted 14% share of total domestic export value in the June quarter of 2014.

## Coconut Oil Exports

Quantity in tonnes  
June quarter 2012 to June quarter 2014

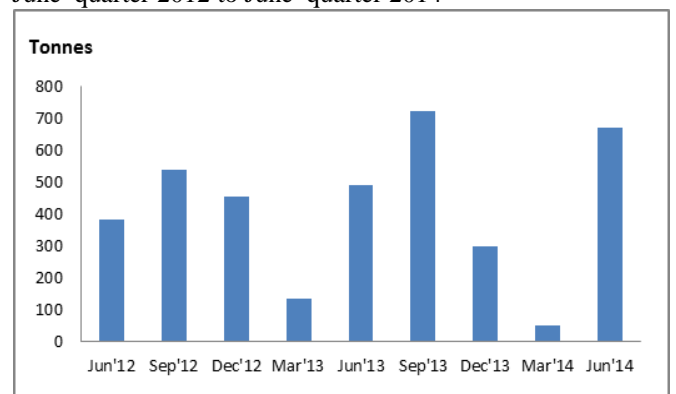


## Cocoa Exports (refer to Tables 6.2, 6.3 and 6.4)

- Cocoa export increased by 37% in quantity to 671 tonnes in the June quarter 2014 compared to 491 tonnes in the June quarter of 2013. It also recorded a huge increase over the previous quarter.
- In value terms, cocoa exports in June quarter 2014 increased by 58% or VT57 million to VT155 million compared to VT98 million in the June quarter of 2013. The cocoa average export price depicted an increase by 15% compared to the June quarter of 2013.
- Cocoa exports share of the total domestic exports value constituted 9% in the June quarter of 2014 compared to the same period in 2013. The increase is attributable to increase in export volume.

### Cocoa Exports

Quantity in tonnes  
June quarter 2012 to June quarter 2014

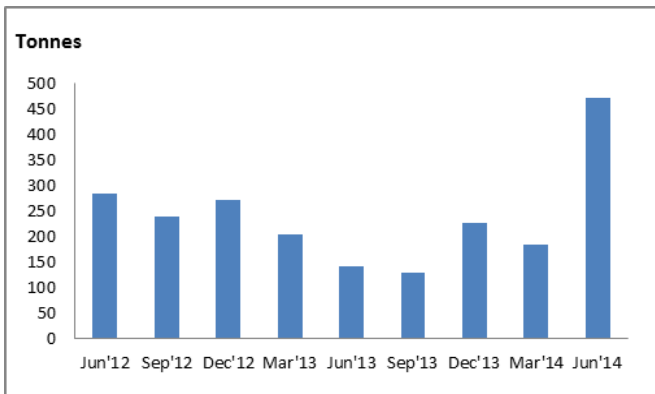


**Beef** (refer to Tables 6.2, 6.3 and 6.4)

- Beef exports increased in quantity by 232% or 330 tonnes to 472 tonnes in June quarter of 2014 over 142 tonnes in June quarter of 2013. Compared to the March quarter of 2014, it recorded an increase by 288 tonnes respectively.
- In value terms, beef exports indicated significant increases by VT122 and VT145 million from VT73 and VT80 million compared to both June quarter of 2013 and March quarter of 2014.
- The implied average beef export price fell by 19% in June quarter 2014 compared to the same period of last year.
- Beef exports value constituted 12% of the total domestic exports receipts in the June quarter of 2014. The increases is attributable to significant increases in both value and quantity of beef exports to Japan, Papua New Guinea and the Solomon Islands over June quarter of 2013

**Beef Exports**

Quantity in tonnes  
June quarter 2012 to June quarter 2014

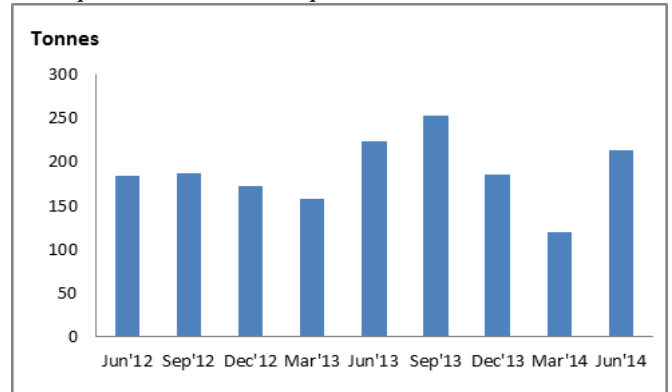


**Kava** (refer to Tables 6.2, 6.3 and 6.4)

- Kava exports decreased in quantity by 4% or 9 tonnes to 214 tonnes in June quarter of 2014 compared to 223 tonnes in June quarter of 2013.
- In value terms, kava export decreased by 2%, indicating a drop in VT5 million in the June quarter of 2014 to VT218 million compared to VT223 million in June quarter of 2013.
- Kava exports constituted 13% share of the total domestic exports in value in the June quarter of 2014.

**Kava exports**

Quantity in tonnes  
June quarter 2012 to June quarter 2014

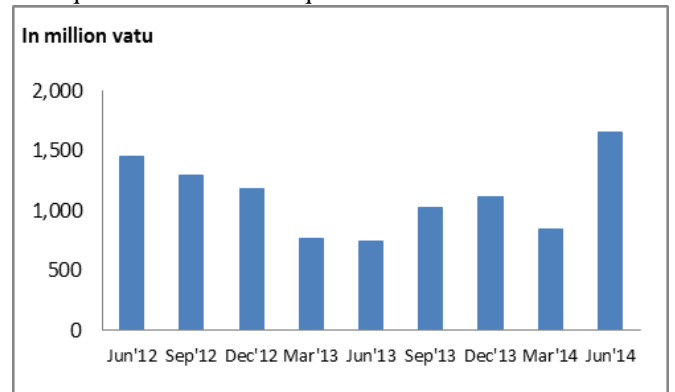


**Domestic Exports** (refer to Tables 6.1 and 6.5)

- According to the June quarter of 2014 provisional figures, domestic export (excluding re-exports) earnings went up significantly by VT903 million from VT749 million to VT1,652 million over June quarter of 2013. The increase is driven mainly by increases in copra, cocoa, coconut oil and beef exports in the June quarter of 2014.
- The distribution of exports by country of destination indicated that ‘Other Countries’ registered the largest share of the Vanuatu’s main export destination with 52% or VT857 million of total domestic exports in June quarter of 2014 followed by Australia (21%); Other MSG Countries and Japan (8%) each respectively ; New Caledonia (7%); European Union Countries and New Zealand (2%) each and South Korea 1% over June quarter of 2013. Other Countries top five were comprised of Philippines, United States of America, Hong Kong, Malaysia and Singapore

**Domestic Exports**

In million Vatu  
June quarter 2012 to June quarter 2014



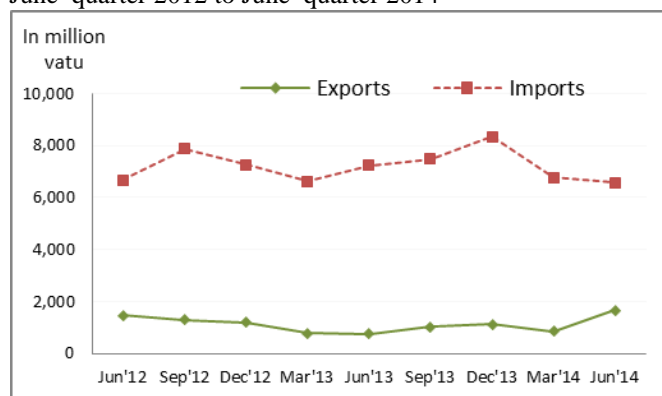
**Trade Deficit** (refer to Table 6.1)

- Vanuatu’s trade deficit (including re-exports) stood at VT4,925 million in the June quarter of 2014, an improvement of VT1,550 million over the June quarter of 2013 from VT6,475 million.
- This improvement is attributable to increases in domestic exports and partially the decrease in total imports in the June quarter of 2014 compared to the same period of the previous year.

**Trade Summary**

In million Vatu

June quarter 2012 to June quarter 2014



**Imports for Home Consumption** (refer to Tables 6.6 and 6.8)

- Imports for home consumption recorded a slight decrease by 9% or VT642 million in value from VT7,186 million in June quarter of 2013 to VT6,544 million in June quarter of 2014.
- All imported commodity group which contributed to this decrease were: Goods not classified elsewhere (48%) followed by crude materials (39%), beverages and tobacco (35%), chemical products (27%), basic manufactured goods (22%), oils and fats (15%), mineral fuels (13%), food and live animals and miscellaneous goods (2%) each, excluding a slight increase recorded for machines and transport equipment 13%, compared to June quarter of 2013 respectively.
- In terms of share of commodity groups to total imports receipts, machines and transport equipment represented the largest value (C.I.F) of Vt 1,642 million or (25%) of the total imports for home consumption, followed by food and live animals and mineral fuels (20%) each, miscellaneous goods (11%), basic manufactured goods (10%) and chemical products (8%). Other commodities such as, beverages and tobacco, oils and fats and goods not classified elsewhere made up less than 5% each of the total imports for home consumption.

- The value of the selected ten major imported items in the June quarter of 2014 declined by 13% or VT

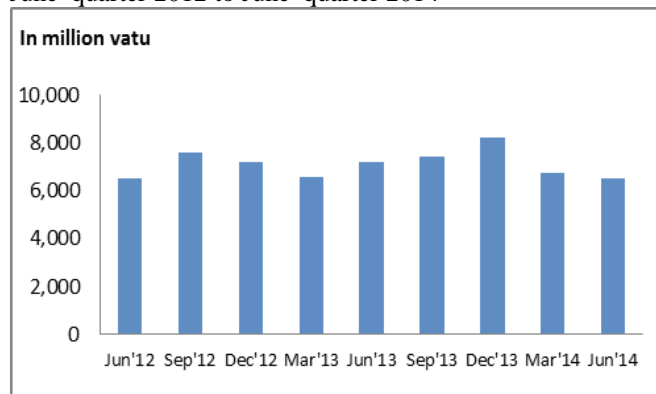
288 million from VT2,254 million to VT1,966 over the June quarter of 2013.

- Commodities that recorded increases were: Motor Vehicle Transport representing 34% or VT10 million at VT39 million compared to VT29 million over the June quarter of 2013, followed by cement 23%, and wheat flour 17% of the total value of the selected ten major imported items. However, the rest of the selected ten major imported items which decreased were cigarettes and tobacco (-85%), personal effects (-49%), pharmaceutical products (-22%), distillate fuels (-13%), rice (-11%), motor spirit (-4%) and jet fuel (-3%) respectively over June quarter of 2013.
- In terms of share of the selected ten major imports receipts, Distillate fuels represented the largest value of VT869 million or (44%) of the total imports of the selected ten major imports, followed by rice valued at VT245 million or (12%), pharmaceutical products and motor spirit (10%) each respectively, jet fuel (8%), wheat flour (6%) and cement (5%), while the rest of the selected ten major imports such as: motor vehicle transport, personal effects and cigarettes and tobacco recorded less than 5% over the June quarter of 2013.

**Imports for Home Consumption**

In million Vatu

June quarter 2012 to June quarter 2014



**Tourism** (refer to Tables 7.1 to 7.4)

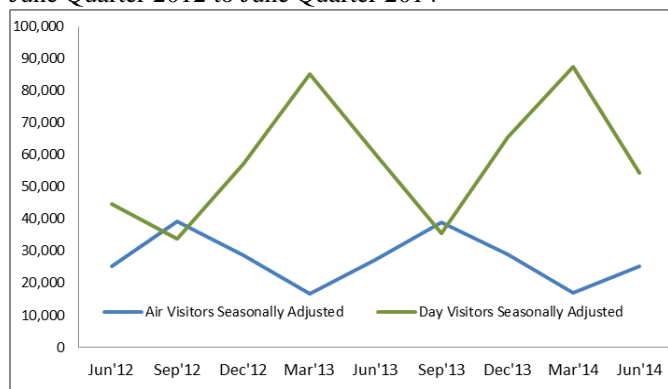
- Total visitor<sup>1</sup> arrivals to Vanuatu for June quarter 2014 stood at 81,193 visitors, a decrease of 7% or 6,187 visitors over June quarter 2013. Total visitors also declined by 7% over the previous March quarter 2014 attributed by decreases in visitors by air and by cruise ship.

<sup>1</sup> Visitors by air and cruise ship

## Quarterly Total visitors

Seasonally adjusted visitor arrivals

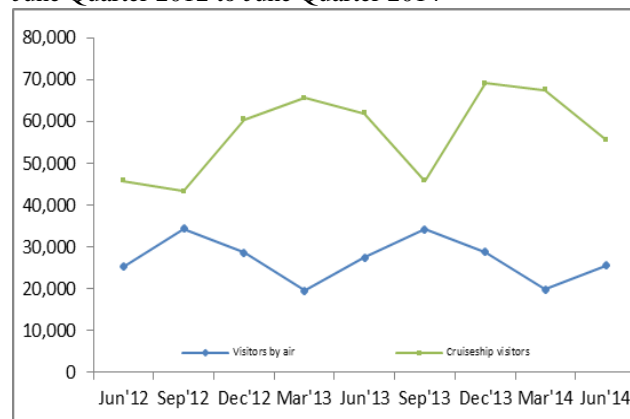
June Quarter 2012 to June Quarter 2014



- The seasonally adjusted visitor arrivals depicted increases in cruise ship visitors for the June quarter 2014, with a low period for visitor arrivals by air as more visitors travel to Vanuatu by cruise ship.
- Total visitors arrivals by air in the June quarter 2014 stood at 25,533 visitors, showing a decline of 7% over June quarter 2013. Air visitors however increased by 29% over the March quarter 2014. Visitor arrivals by air make up 31% of total international visitor arrivals into the country.
- Australian visitors continue to account for the highest visitors arrivals by air contributing 56% of all visitor arrivals by air.
- In June quarter 2014, increases in visitors were registered for other countries at 39%, New Zealand at 11% and Japan at 10% while decreases were recorded for other pacific countries at (-18%), Australia at (-13%), New Caledonia and Europe at (-8%) and North America at (-6%) over the June quarter 2013.
- Holiday visitors accounted for 81% of visitor arrivals by air in June 2014, followed by visitors arriving for business, meetings and conferences at 9%, visitors arriving to visit friends and families at 7% and visitors arriving for other purposes at 3%.
- Cruise ship visitors in the June quarter 2014 stood at 55,660 day visitors, it shows a decrease of 7% over the June quarter 2013. This decline was due to decreases in cruise ship visits from 31 cruise ships in June quarter 2013 to 27 cruise ships in June quarter 2014. Cruise ship visitors however increased by 18% over the previous March quarter 2014. Day visitors continue to dominate the number of international visitor arrivals to Vanuatu, accounting for 69% of total international visitors.

## Number of Visitors by Quarter

June Quarter 2012 to June Quarter 2014



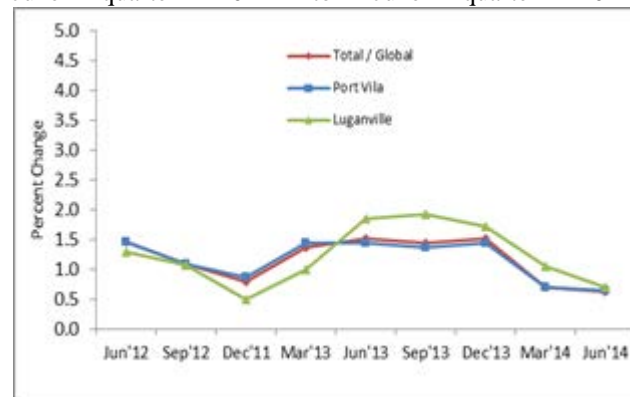
## Consumer Price Index (refer to Tables 4.1 and 4.2)

- The Consumer Price Index (CPI) of June quarter 2014 showed an increase of 0.1% over the previous March quarter 2014. Port Vila index and Luganville index rose by 0.1% and 0.4% respectively over the previous quarter. The Vanuatu index increased by 0.6%, where Port Vila rose by 0.6% and Luganville at 0.7% over June quarter 2013.

## Inflation Rate

Rate of change over the same quarter of previous year

June quarter 2012 to June quarter 2014



- At national level, the expenditure groups that contributed to the increase over the same quarter of last year were: Clothing and Footwear (+3.1%), Food (+1.8%), Drinks and Tobacco (+1.0%), Miscellaneous (+0.9%), Health (+0.6%) and Education (+0.5%). The increases in these expenditure groups were the result of the increase of price in Men and Women's Clothing, Dairy and related product, Alcohol and Tobacco, and Personal Accessories. However, the only group that recorded an offsetting fall was Recreation (-2.8%).

## Summary of Government Revenue and Expenditure

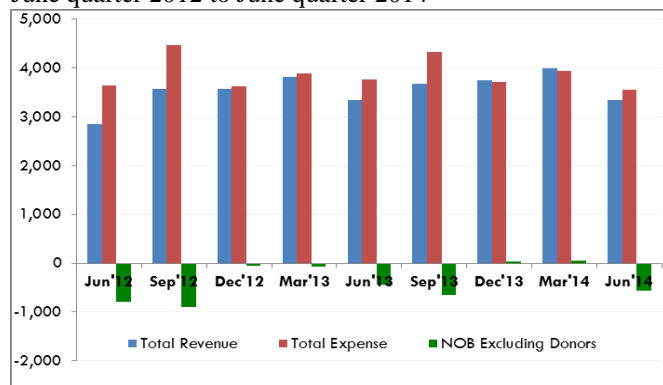
Total Government Operation(TGO) refer to Table 5.1)\*

- Total Government revenue recorded VT 4,213.5 million of which 79.2% is recurrent budget while 20.8% were grants received from abroad. Total revenue decreased by (-0.2%) over the corresponding quarter of 2013, also a decline of at 5% over the previous quarter.
- Government expenditure for June quarter 2014 amounted to VT 3,891 million, an increase of 3.3% over the corresponding period in 2013, however showing a decline of (-1%) over the previous March quarter 2014.

### Total Government Operations

In million Vatu

June quarter 2012 to June quarter 2014



Source: Department of Finance and Treasury

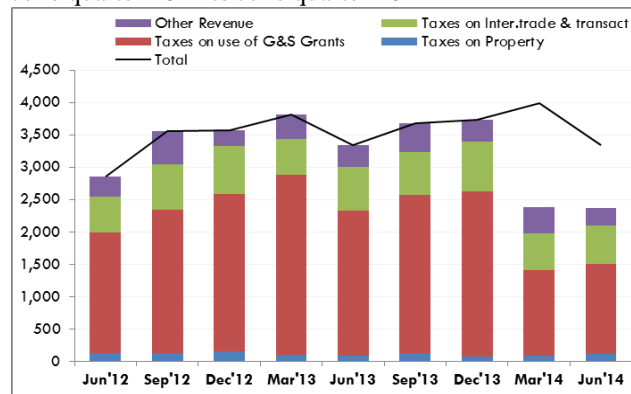
### Government Revenue (refer to Table 5.1)

- Total revenue excluding donors totaled VT 3,337 million, an increase of 0.1% over the same period in 2013, while decreasing at 16.4% over the previous March quarter 2014. Total Revenue collected from taxes totaled VT 3,070.3 million, an increase of 2.2% over the June quarter 2013, however falling by 16% over the previous March quarter 2014.

## Total Revenue Excluding Donors

In million Vatu

June quarter 2012 to June quarter 2014



Source: Department of Finance and Treasury

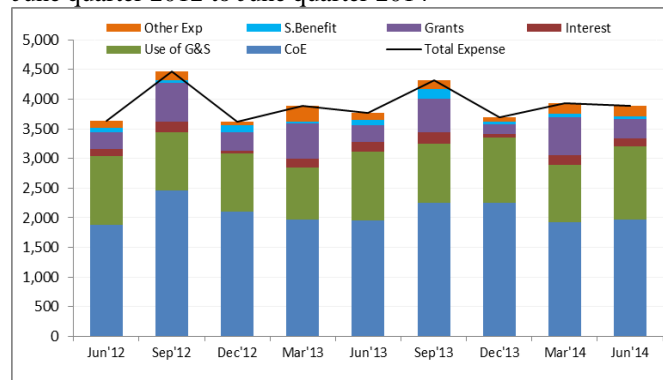
### Government Expenditure (refer to Table 5.1)

- Total government expenditure in the June quarter 2014 totaled VT 3,891 million, increasing by 3.3% over the same period in 2013, however decreasing by 1% over the previous March quarter.
- Compensation of employees contributed 51% or VT 1,963 million of the total government expenditure, which is an increase of 0.1% over the same period in 2013 and also an increase of 2.3% over the March quarter 2013.

### Total Government Expenditure

In million Vatu

June quarter 2012 to June quarter 2014



Source: Department of Finance and Treasury

### Energy Consumption (refer to Table 3)

- Total electricity consumption, as expressed in thousand kilowatts for June quarter 2014 decreased by 5% over the June quarter 2013. This decline was due to decreases in electricity consumption from Port Vila (-6%) and Luganville (-4%). However, Malekula and Tanna both recorded increases in Electricity consumption by 3% and 13% respectively over June quarter 2013. Total electricity consumption also decreased by 12% over the previous March quarter 2014.

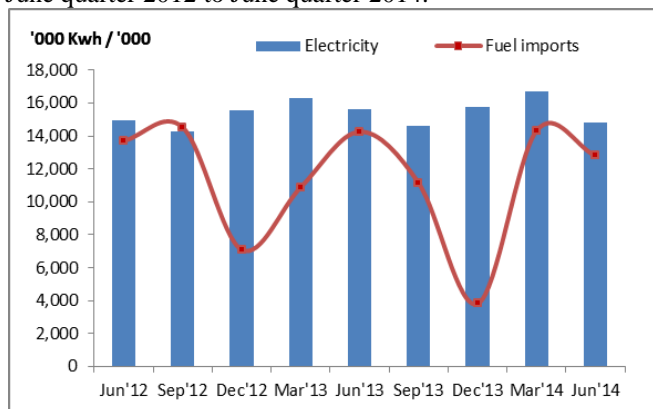
\* Government Finance Statistics (GFS) have migrated from GFS86 format to GFS01 format. This is in line with the implementation of 2001 GFS manual.



## Electricity and Fuel imports

In '000 Kwh and '000 litres

June quarter 2012 to June quarter 2014.



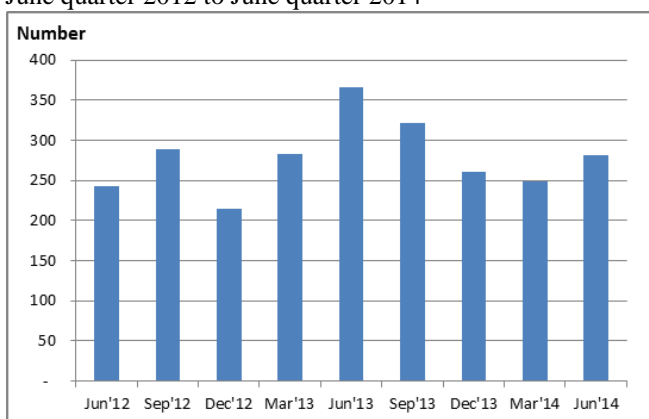
- The total volume of imported petrol, diesel and kerosene declined by 10% or 1,468 litres to 12,800 litres in June quarter 2014 compared to 14,268 litres in June 2013. This decline is attributed to a 12% or 1,460 litres drop in Diesel over the June quarter of 2013 from 11,891 litres to 10,431 litres in the June quarter of 2014. It also declined by 11% or 1,530 litres over the previous quarter.

## New Motor Vehicle Registration (refer to Table 9)

- The total number of private motor vehicle registrations in the June quarter 2014 stood at 282, showing a decrease by 23% over the corresponding quarter of 2013. This decrease was due to decreases in Pick-Ups (-64%), Motorcycles at (-15%) and Buses at (-13%). Private motor vehicles however increased at 14% over the previous March quarter 2014.

## New Private Motor Vehicle Registration

June quarter 2012 to June quarter 2014



**PRODUCTION**

**Table 1 Cattle Slaughter by Abattoirs**

**Tableau 1 Abattage de bovins par abattoirs**

**Number/tonne**

**Nombre/tonne**

Year	Quarter	Vila			Santo			Total			Année	Trimestre
		Number of Head	Weight (tonne)	Av Carcass Weight (kg)	Number of Head	Weight (tonne)	Av Carcass Weight (kg)	Number of Head	Weight (tonne)	Av Carcass Weight (kg)		
		Nombre de tête	Poids (tonnes)	Poids moyen de carcasse	Nombre de tête	Poids (tonnes)	Poids moyen de carcasse	Nombre de tête	Poids (tonnes)	Poids moyen de carcasse		
2010		10,374	2,168	209	6,282	1,369	218	16,656	3,537	212	2010	
2011		10,761	2,222	206	4,517	992	220	15,278	3,214	210	2011	
2012		12,889	2,455	190	3,787	935	247	16,676	3,390	203	2012	
2013		13,944	2,401	689	3,540	888	1,007	17,484	3,289	753	2013	
2010	1st	2,288	499	218	1,514	306	202	3,802	805	212	2010	1er
	2nd	2,510	520	207	1,337	301	225	3,847	821	213		2ème
	3rd	2,771	575	207	1,938	438	226	4,709	1,013	215		3ème
	4th	2,805	574	205	1,493	324	217	4,298	898	209		4ème
2011	1st	2,161	438	203	1,127	264	234	3,288	702	214	2011	1er
	2nd	2,546	523	205	1,270	240	189	3,816	763	200		2ème
	3th	2,698	638	237	1,217	278	228	3,915	916	175		3ème
	4th	3,356	623	186	903	210	233	4,259	833	196		4ème
2012	1st	3,155	612	194	1,074	225	210	4,229	837	198	2012	1er
	2nd	3,222	635	197	901	234	260	4,123	869	211		2ème
	3rd	3,123	598	191	865	222	257	3,988	820	206		3ème
	4th	3,389	610	180	947	254	268	4,336	864	199		4ème
2013	1st	3,285	570	173	705	190	270	3,990	760	190	2013	1er
	2nd	3,267	571	175	811	196	241	4,078	767	188		2ème
	3rd	3,643	616	169	1,040	257	247	4,683	873	186		3ème
	4th	3,749	645	172	984	245	249	4,733	890	188		4ème
2014	1st	3,097	543	175	589	147	249	3,686	690	187	2014	1er
	2nd	3,070	547	178	742	185	249	3,812	732	192		2ème

Source: Vanuatu Abattoirs Ltd and Santo Meat Packers / Société des Abattoirs du Vanuatu et Santo Meat Packers

COMMUNICATION

**Table 2 Postal Services**

**Tableau 2 Service postal**

Year	Quarter	Letters	Priority Letters	Printed Matters	Packets (1)	Parcels Registered (1)	Express Mail Service	Total	Domestic Mail	International Mail		Total	Année	Trimestre	
		Lettres	Lettres de priorité	Imprimés	Paquets	Colis	Recommandées		Courriers par express	Courrier Interne	Courrier International				Outbound
										Sortant		Reçu			
2010		895,177	522	89,480	140,534	6,385	191,116	4,816	1,328,030	669,000	428,000	231,030	1,328,030	2010	
2011		886,757	658	41,532	160,692	6,417	154,365	6,415	1,256,836	660,678	399,484	196,674	1,256,836	2011	
2012		724,657	606	32,994	168,591	6,125	117,739	9,427	1,060,139	504,756	370,619	184,764	1,060,139	2012	
2013		659,068	672	35,294	210,209	9,097	184,799	16,709	977,059	480,725	344,218	152,116	977,059	2013	
2010	1st	203,149	141	22,863	32,099	1,506	49,663	1,021	310,442	145,362	102,900	62,180	310,442	2010	1er
	2nd	220,986	123	20,182	35,378	1,390	49,501	1,115	328,675	161,802	108,380	58,493	328,675		2ème
	3rd	244,492	131	24,472	33,620	1,744	48,945	1,397	354,801	192,732	109,407	52,662	354,801		3ème
	4th	226,550	127	21,963	39,437	1,745	43,007	1,283	334,112	169,104	107,313	57,695	334,112		4ème
2011	1st	230,030	151	10,260	37,896	1,616	42,055	1,175	323,183	172,442	98,484	52,257	323,183	2011	1er
	2nd	234,026	162	11,502	36,592	1,576	39,452	1,434	324,744	178,914	96,042	49,788	324,744		2ème
	3rd	216,909	168	9,487	40,415	1,562	38,493	1,843	308,877	158,390	102,676	47,811	308,877		3ème
	4th	205,792	177	10,283	45,789	1,663	34,365	1,963	300,032	150,932	102,282	46,818	300,032		4ème
2012	1st	182,618	137	9,229	44,747	1,581	31,621	1,888	271,821	129,307	95,314	47,200	271,821	2012	1er
	2nd	167,643	141	8,287	42,574	1,455	28,742	2,347	251,189	118,004	90,193	42,992	251,189		2ème
	3rd	205,981	164	7,564	39,998	1,421	27,855	2,521	285,504	146,317	92,031	47,156	285,504		3ème
	4th	168,415	164	7,914	41,272	1,668	29,521	2,671	251,625	111,128	93,081	47,416	251,625		4ème
2013	1st	155,333	128	8,442	42,414	1,364	31,895	2,516	242,092	113,578	92,141	36,373	242,092	2013	1er
	2nd	161,027	176	8,583	36,415	1,515	30,450	2,932	241,098	119,105	85,997	35,996	241,098		2ème
	3rd	175,855	192	8,906	32,352	1,582	30,395	3,148	252,430	129,278	84,973	38,179	252,430		3ème
	4th	166,853	176	9,363	30,261	1,539	31,214	2,033	241,439	118,764	81,107	41,568	241,439		4ème
2014	1st	151,030	140	8,453	30,796	1,263	31,932	1,919	225,533	108,139	75,619	41,775	225,533	2014	1er
	2nd	147,274	138	11,053	23,442	1,390	23,407	1,675	208,379	113,520	61,310	33,549	208,379		2ème

Source : Vanuatu Postal Services / Hotel de poste du Vanuatu

Table 3 Energy Consumption

Tableau 3 Consommation d'énergie

Year	Quarter	'000 Kwh / x 1000 Kwh				Total	Imports Cleared for Home Consumption ('000 litres)				Année	Trimestre
		Port Vila	Luganville	Malekula Mallicolo	Tanna		Importations destinées à la consommation intérieure ( x 1000 litres)					
						Petrol Essence Auto	Diesel Mazout	Kerosene Pétrole lampant	Total			
2009		49,520	6,529	503	372	56,924	8,238	36,747	295	45,280	2009	
2010		52,568	7,504	579	420	61,071	9,703	36,040	69	45,812	2010	
2011		54,014	7,572	597	460	62,644	8,494	39,904	843	49,241	2011	
2012		52,243	7,749	619	509	61,120	8,364	34,859	0	43,224	2012	
2013		53,081	7,953	630	636	62,299	8,017	32,079	24	40,119	2013	
2010	1st	13,820	1,773	143	99	15,836	1,699	5,025	33	6,757	2010 1er	
	2nd	12,748	1,834	150	104	14,835	3,031	12,558	20	15,609	2ème	
	3rd	12,501	1,837	148	107	14,593	3,024	12,426	16	15,466	3ème	
	4th	13,499	2,061	137	110	15,807	1,949	6,030	-	7,980	4ème	
2011	1st	14,075	1,751	154	117	16,097	2,150	12,089	842	15,081	2011 1er	
	2nd	13,716	1,985	145	113	15,959	1,513	6,978	1	8,491	2ème	
	3rd	12,554	1,868	146	114	14,682	1,571	9,857	0	11,428	3ème	
	4th	13,669	1,968	152	117	15,906	3,260	10,980	0	14,240	4ème	
2012	1st	14,118	1,934	156	125	16,333	1,928	5,964	0	7,892	2012 1er	
	2nd	12,695	1,969	157	129	14,950	2,643	11,074	-	13,717	2ème	
	3rd	12,099	1,887	148	126	14,259	2,489	12,034	0	14,523	3ème	
	4th	13,331	1,958	159	130	15,578	1,304	5,787	-	7,091	4ème	
2013	1st	14,025	2,000	159	131	16,315	2,576	8,316	0	10,892	2013 1er	
	2nd	13,280	2,019	157	160	15,616	2,354	11,891	23	14,268	2ème	
	3rd	12,371	1,933	154	171	14,629	2,410	8,735	0	11,145	3ème	
	4th	13,406	2,001	161	173	15,740	677	3,137	0	3,815	4ème	
2014	1st	14,420	1,985	159	168	16,733	2,984	11,346	0	14,330	2014 1er	
	2nd	12,522	1,942	161	181	14,806	2,368	10,431	0	12,800	2ème	

Source : Unelco Vanuatu Limited; Vanuatu Utilities &amp; Infrastructures Ltd; and Department of Customs

Société de l'Unelco Vanuatu; Société des Services &amp; des Infrastructures du Vanuatu ; et le Service des Douanes

PRICE INDICES

Table 4.1 Consumer Price Index

Base: 1st Quarter 2000 = 100

Tableau 4.1 Indice des prix à la consommation

Base: 1<sup>er</sup> Trimestre 2000 = 100

Year	Quarter	Consumer Price Indices			Underlying Inflation Index Inflation sous-jacente	Rate of Change (%)			Rate of Change (%)			Année	Trimestre
		Indice des prix à la consommation				Variation par rapport			Variation				
		Total / Global	Port Vila	Luganville	Total / Global	Port Vila	Luganville	Total / Global	Port Vila	Luganville			
						<b>Over Previous Year / à l'année précédente</b>			<b>4th Quarter over 4th Quarter of previous year / du 4ème trimestre au 4ème trimestre de l'année précédente</b>				
2010		135.8	135.4	137.6	122.3	2.8	2.9	2.1	3.4	3.5	2.6	2010	
2011		137.0	136.7	138.2	123.4	0.9	1.0	0.5	1.2	1.4	0.4	2011	
2012		138.8	138.6	139.9	126.8	1.4	1.4	1.2	0.8	0.9	0.5	2012	
2013		140.6	142.1	129.3	0.0	1.4	1.6	0.0	1.5	1.4	1.7	2013	
						<b>Over Previous Quarter / au trimestre précédent</b>			<b>Over Same Quarter of previous year / au même trimestre de l'année précédente</b>				
2010	1st	134.9	134.6	136.3	123.3	2.4	2.7	0.7	2.8	3.0	2.1	2010	1er
	2nd	135.9	135.6	137.1	121.7	0.7	0.7	0.6	2.7	2.8	2.2		2ème
	3rd	136.0	135.6	138.0	122.0	0.1	0.0	0.7	2.3	2.4	1.5		3ème
	4th	136.3	135.7	138.9	122.2	0.2	0.1	0.7	3.4	3.5	2.6		4ème
2011	1st	135.8	135.5	137.1	122.6	-0.4	-0.1	-1.3	0.7	0.7	0.6	2011	1er
	2nd	136.7	136.5	137.9	122.3	0.7	0.7	0.6	0.6	0.7	0.6		2ème
	3rd	137.4	137.2	138.4	124.3	0.5	0.5	0.4	1.0	1.2	0.3		3ème
	4th	137.9	137.6	139.3	124.5	0.4	0.3	0.7	1.2	1.4	0.4		4ème
2012	1st	138.6	138.3	139.8	126.2	0.5	0.5	0.4	2.1	2.1	2.0	2012	1er
	2nd	138.7	138.5	139.7	126.9	0.1	0.1	-0.1	1.5	1.5	1.3		2ème
	3rd	138.9	138.7	139.9	126.6	0.1	0.1	0.1	1.1	1.1	1.1		3ème
	4th	139.0	138.8	140.0	127.4	0.1	0.1	0.1	0.8	0.9	0.5		4ème
2013	1st	140.5	140.3	141.2	129.0	1.1	1.1	0.9	1.4	1.4	1.0	2013	1er
	2nd	140.8	140.5	142.3	129.3	0.2	0.1	0.8	1.5	1.4	1.9		2ème
	3rd	140.9	140.6	142.6	129.4	0.1	0.1	0.2	1.4	1.4	1.9		3ème
	4th	141.1	140.8	142.4	129.5	0.1	0.1	-0.1	1.5	1.4	1.7		4ème
2014	1st	141.5	141.3	142.7	129.9	0.3	0.4	0.2	0.7	0.7	1.1	2014	1er
	2nd	141.7	141.4	143.3	130.6	0.1	0.1	0.4	0.6	0.6	0.7		2ème

Source : Vanuatu National Statistics Department / Bureau National de la Statistique

PRICE INDICES

Table 4.2 Consumer Price Indices by Expenditure Group, Vanuatu

Tableau 4.2 Indice des prix à la consommation par poste de dépense

Base: 1st Quarter 2000 = 100

Base: 1<sup>er</sup> Trimestre 2000 = 100

Year	Quarter	Food Produits alimentaires	Alcoholic drinks and Tobacco Boisson alcoolisée et tabac	Clothing & Footwear Habillement	Housing & Utilities Loyer, eau, et énergie etc.	Household Supplies Mobilier et équipement ménager etc.	Health Santé	Transport	Communication	Recreation Loisir	Education	Miscellaneous Autres	All Groups Indice Global	Année	Trimestre
<b>Vanuatu</b>															
2010	1st	140.0	170.2	100.7	128.0	104.2	101.0	146.4	98.7	131.3	100.9	102.3	134.9	2010	1er
	2nd	141.7	172.1	100.7	129.7	103.6	101.4	146.5	98.7	130.1	101.0	102.3	135.9		2ème
	3rd	141.6	172.4	100.4	129.9	103.8	101.1	147.5	98.7	130.1	101.0	102.2	136.0		3ème
	4th	142.2	173.9	100.5	129.6	104.1	100.5	147.7	98.9	130.1	101.0	102.2	136.3		4ème
2011	1st	140.8	172.1	100.5	129.3	103.7	101.6	147.8	98.9	130.2	104.4	102.1	135.8	2011	1er
	2nd	141.8	173.5	101.5	131.7	101.6	101.6	150.5	98.8	129.7	104.1	102.4	136.7		2ème
	3rd	144.0	177.2	102.6	131.7	100.3	101.8	140.4	98.8	136.3	105.9	100.2	137.4		3ème
	4th	143.2	177.1	99.9	131.6	105.2	101.3	144.3	99.2	136.4	106.1	106.8	137.7		4ème
2012	1st	144.8	176.8	98.5	132.1	106.7	101.6	143.8	97.9	134.8	107.8	107.2	138.6	2012	1er
	2nd	145.5	177.6	100.6	130.3	106.8	100.6	143.8	97.8	135.4	107.6	109.9	138.7		2ème
	3rd	145.9	177.7	102.5	129.7	107.7	100.2	143.7	98.0	136.0	107.6	110.0	138.9		3ème
	4th	145.5	177.6	102.7	129.8	107.8	100.2	143.6	98.3	139.4	107.6	112.8	139.0		4ème
2013	1st	146.9	177.7	103.3	132.8	108.7	101.0	143.8	98.7	140.6	110.1	112.0	140.5	2013	1er
	2nd	147.4	178.3	106.0	133.6	107.1	101.1	143.3	98.7	137.8	110.5	114.3	140.8		2ème
	3rd	147.7	178.5	107.3	133.6	107.2	101.3	143.0	98.3	136.6	110.5	114.8	140.9		3ème
	4th	148.4	179.5	107.2	133.6	107.0	101.3	143.0	98.3	133.4	110.5	114.5	141.1		4ème
2014	1st	149.5	179.5	107.5	133.6	107.1	101.4	143.0	98.3	132.1	111.0	114.7	141.5	2014	1er
	2nd	150.1	180.0	109.3	132.6	107.2	101.7	142.8	98.6	134.0	111.1	115.3	141.7		2ème

Source : Vanuatu National Statistics Department / Bureau National de la Statistique

PRICE INDICES

**Table 4.3 Consumer Price Indices by Expenditure Group, Port Vila**

**Tableau 4.3 Indice des prix à la consommation par poste de dépense**

**Base: 1st Quarter 2000 = 100**

**Base: 1er Trimestre 2000 = 100**

Year	Quarter	Food Produits alimentaires	Alcoholic drinks and Tobacco Boisson alcoolisée et tabac	Clothing & Footwear Habillement	Housing & Utilities Loyer, eau, et énergie etc.	Household Supplies Mobilier et équipement ménager etc.	Health Santé	Transport	Communication	Recreation Loisir	Education	Miscellaneous Autres	All Groups Indice Global	Année	Trimestre
<b>Port Vila</b>														<b>Port Vila</b>	
2010	1st	139.5	175.9	101.6	124.4	103.4	101.2	148.1	98.5	132.9	101.9	102.1	134.6	2010	1er
	2nd	141.4	177.5	101.6	126.3	102.7	101.6	148.1	98.5	131.4	102.0	102.1	135.6		2ème
	3rd	140.8	177.9	101.3	126.5	102.9	101.3	149.2	98.5	131.4	102.0	102.0	135.6		3ème
	4th	141.2	178.3	101.3	126.3	103.2	100.7	149.4	98.5	131.4	102.0	102.1	135.7		4ème
2011	1st	140.2	176.0	101.3	126.3	102.7	100.9	149.9	98.6	131.5	106.3	102.0	135.5	2011	1er
	2nd	141.3	177.4	102.4	128.8	100.3	100.9	152.8	98.6	131.2	105.9	102.0	136.5		2ème
	3rd	144.4	181.8	105.1	127.6	99.4	101.0	141.3	98.5	138.9	106.7	99.5	137.2		3ème
	4th	142.9	181.7	101.4	127.5	105.1	101.4	145.7	99.0	138.8	106.9	107.4	137.6		4ème
2012	1st	145.0	181.8	99.9	127.9	106.6	101.4	145.7	97.6	136.8	106.9	107.4	138.3	2012	1er
	2nd	146.2	182.2	102.1	125.9	106.7	100.5	145.7	97.6	137.4	106.7	109.7	138.5		2ème
	3rd	146.6	182.3	104.1	125.2	107.9	100.1	145.5	97.7	138.0	106.7	109.9	138.7		3ème
	4th	146.2	182.2	104.3	125.2	108.0	100.1	145.4	97.8	142.0	106.7	113.1	138.8		4ème
2013	1st	147.3	182.1	104.6	128.5	109.1	101.0	146.2	98.1	143.3	109.4	111.7	140.3	2013	1er
	2nd	147.6	182.4	106.6	129.3	106.4	101.1	146.5	98.2	140.4	109.9	114.3	140.5		2ème
	3rd	147.9	182.5	108.4	129.3	106.5	101.3	146.1	97.7	139.0	109.9	114.6	140.6		3ème
	4th	148.8	183.8	108.4	129.3	106.4	101.3	146.1	97.7	135.3	109.9	114.6	140.8		4ème
2014	1st	150.0	183.8	108.4	129.3	106.4	101.3	146.1	97.7	134.1	110.5	114.8	141.3	2014	1er
	2nd	150.6	184.3	110.6	128.3	106.3	101.6	145.2	98.1	136.3	110.6	115.5	141.4		2ème

Source : Vanuatu National Statistics Department / Bureau National de la Statistique

PRICE INDICES

**Table 4.4 Consumer Price Indices by Expenditure Group, Luganville**

**Base: 1st Quarter 2000 = 100**

**Tableau 4.4 Indice des prix à la consommation par poste de dépense**

**Base: 1er Trimestre 2000 = 100**

Year	Quarter	Food Produits alimentaires	Alcoholic drinks and Tobacco Boisson alcoolisée et tabac	Clothing & Footwear Habillement	Housing & Utilities Loyer, eau, et énergie etc.	Household Supplies Mobilier et équipement ménager etc.	Health Santé	Transport	Communication	Recreation Loisir	Education	Miscellaneous Autres	All Groups Indice Global	Année	Trimestre
<b>Luganville</b>														<b>Luganville</b>	
2010	1st	143.3	144.7	97.7	148.3	108.3	99.4	137.6	100.3	122.4	97.5	103.8	136.3	2010	1er
	2nd	144.3	147.3	97.6	148.8	108.3	99.4	138.4	100.3	122.3	97.5	103.8	137.1		2ème
	3rd	146.3	147.4	97.5	148.9	108.4	99.5	138.6	100.3	122.6	97.5	103.8	138.0		3ème
	4th	147.4	152.7	97.5	147.5	108.4	99.5	138.6	101.3	122.9	97.5	103.1	138.8		4ème
2011	1st	144.5	152.7	97.7	145.0	109.0	106.8	137.0	100.7	122.9	97.5	103.1	137.1	2011	1er
	2nd	145.3	153.7	98.3	146.7	109.3	106.8	138.8	100.1	121.4	97.6	104.8	137.9		2ème
	3rd	143.9	154.9	93.0	155.7	104.8	107.5	135.9	100.1	121.4	102.9	104.9	138.4		3ème
	4th	145.4	155.6	94.3	155.3	105.6	107.6	137.0	100.5	122.8	102.9	103.1	139.3		4ème
2012	1st	145.3	153.3	93.5	156.6	106.4	103.1	134.0	99.5	123.5	110.9	106.0	139.8	2012	1er
	2nd	145.4	155.6	94.3	155.3	105.6	107.6	137.0	100.5	122.8	102.9	103.1	139.3		2ème
	3rd	144.6	155.6	96.5	156.8	106.3	101.1	134.2	99.5	124.8	110.9	111.1	139.9		3ème
	4th	144.3	155.6	96.7	157.5	106.1	101.1	134.3	101.5	124.8	110.9	110.8	140.0		4ème
2013	1st	146.5	156.0	98.5	158.4	106.1	101.2	131.0	102.0	125.2	112.4	113.6	141.2	2013	1er
	2nd	147.9	157.5	103.9	158.9	110.5	101.2	126.4	102.0	122.9	112.8	114.8	142.3		2ème
	3rd	148.5	158.1	103.5	158.9	110.6	101.2	126.6	101.8	122.9	112.8	115.9	142.6		3ème
	4th	148.3	158.1	103.1	158.9	110.5	101.2	126.6	101.8	122.9	112.8	113.9	142.4		4ème
2014	1st	148.8	158.1	104.3	158.9	110.9	102.3	126.6	101.8	120.6	112.8	113.9	142.7	2014	1er
	2nd	149.4	158.6	104.3	158.9	112.7	102.3	130.5	101.8	120.6	112.8	113.9	143.3		2ème

Source : Vanuatu National Statistics Department / Bureau National de la Statistique



Table 5.1 Summary Statement of Total Government Operation

(Millions of Vatu)

Tableau 5.1 Déclaration sommaire du total des opérations du gouvernement

(Des millions de vatu)

Period	TOTAL REVENUE AND GRANTS LE TOTAL DES RECETTES ET SUBVENTIONS									TOTAL EXPENSES LE TOTAL DES DÉPENSES							Net Operating Balance (NOB)	NOB Excluding Donors
	Taxes Revenue / <i>Les impôts Revenu</i>						Non Taxes Revenue / <i>Taxes non Revenu</i>			Comp. of Employees	Use of Goods and Services	Interest	Grants	Social Benefit	Other Expense	Total Expense		
	Taxes on Goods & Services <i>Les taxes sur les biens et les Services</i>						Grants	Other Revenue	Total Revenue									
	Taxes on Property	Value Added	Excise	Other	Taxes on Inter.trade & transact	Total				Subventions	Autres recettes	Total des recettes	Autres recettes	Total des recettes	Autres recettes	Total des recettes		
2010	485.4	4301.1	1882.3	1774.0	2646.0	11088.8	4431.4	1187.4	16707.7	7830.8	4693.3	333.5	1510.4	410.0	330.9	15108.9	1598.7	-2832.7
2011	430.6	4711.3	1935.7	1681.2	2871.4	11630.3	2953.8	1220.3	15804.4	7861.6	4684.8	397.8	1651.9	240.0	669.2	15505.3	299.1	-2654.7
2012	548.3	5006.3	1875.7	1989.1	2580.2	11999.5	2176.3	1612.8	15788.6	8409.6	4117.2	464.7	1889.3	311.6	563.0	15755.4	33.2	-2143.0
2013	360.4	5449.4	1898.2	2703.2	2637.7	13048.8	1692.1	1504.9	16245.8	8437.1	4125.2	555.0	1603.3	344.7	617.0	15682.4	563.4	-1128.7
2010 1st	113.5	948.4	325.3	982.1	640.3	3,009.6	1,174.0	188.5	4,372.1	1,554.2	1,005.8	108.9	536.3	104.6	58.0	3,367.8	1,004.3	-169.7
2nd	133.3	937.9	431.9	287.8	538.1	2,329.0	1,769.8	265.0	4,363.8	2,029.8	1,160.8	66.9	380.8	92.5	90.1	3,820.8	543.0	-1,226.9
3rd	137.5	1,272.9	523.0	212.2	689.3	2,834.9	952.2	339.3	4,126.4	1,816.2	1,093.6	101.8	496.4	132.2	100.1	3,740.4	386.0	-566.2
4th	101.1	1,141.9	602.1	291.9	778.3	2,915.3	535.4	394.6	3,845.3	2,430.6	1,433.0	56.0	96.9	80.7	82.7	4,179.9	-334.5	-869.9
2011 1st	86.9	1,041.9	447.0	872.1	614.5	3,062.3	1,598.1	318.7	4,979.1	1,597.4	1,184.5	87.0	673.4	48.3	167.9	3,758.6	1,220.6	-377.6
2nd	96.4	1,102.0	484.6	251.2	688.1	2,622.3	710.6	243.8	3,576.7	2,086.1	1,233.4	90.7	282.8	36.6	207.0	3,936.6	-359.9	-1,070.5
3rd	130.4	1,388.5	483.7	366.5	752.0	3,121.2	333.2	389.4	3,843.8	2,137.6	1,179.4	175.7	285.4	70.8	142.4	3,991.3	-147.6	-480.8
4th	116.8	1,178.9	520.5	191.5	816.8	2,824.5	311.9	268.5	3,404.8	2,040.5	1,087.5	44.4	410.2	84.3	151.9	3,818.7	-413.9	-725.8
2012 1st	158.4	1,099.5	460.3	798.7	571.4	3,088.3	743.5	548.4	4,380.1	1,970.8	987.7	123.2	641.3	71.8	232.0	4,026.7	353.4	-390.1
2nd	118.6	1,112.4	398.3	354.0	558.1	2,541.4	1,004.2	310.4	3,856.0	1,876.2	1,169.8	110.5	289.7	67.1	128.1	3,641.5	214.6	-789.7
3rd	124.3	1,339.7	463.9	414.8	700.5	3,043.1	186.3	516.8	3,746.1	2,458.8	978.3	185.9	646.4	55.6	138.8	4,463.9	-717.8	-904.0
4th	147.1	1,454.7	553.2	421.6	750.3	3,326.7	242.3	237.3	3,806.4	2,103.8	981.3	45.1	311.9	117.2	64.1	3,623.3	183.1	-59.2
2013 1st	97.4	1,197.4	410.7	1,178.0	544.4	3,427.8	269.4	382.6	4,079.8	1,972.6	872.8	150.6	587.8	41.4	262.4	3,887.6	192.2	-77.2
2nd	79.1	1,354.2	491.8	403.7	675.0	3,003.9	887.9	331.2	4,223.0	1,962.1	1,153.7	160.2	287.2	83.5	121.3	3,767.9	455.2	-432.7
3rd	118.8	1,455.8	495.7	502.9	657.1	3,230.3	247.5	443.0	3,920.9	2,252.1	1,002.2	180.5	570.5	161.0	159.0	4,325.3	-404.4	-651.9
4th	65.1	1,442.0	499.9	618.5	761.2	3,386.8	287.3	348.1	4,022.1	2,250.4	1,096.5	63.8	157.8	58.8	74.3	3,701.7	320.5	33.2
2014 1st	87.6	1,321.9	476.1	1,199.5	569.1	3,654.3	443.4	400.0	4,433.7	1,920.1	972.3	168.9	633.1	65.9	168.3	3,928.7	505.1	61.6
2nd	112.5	1,388.1	457.0	517.8	594.8	3,070.3	876.5	266.7	4,213.5	1,963.4	1,241.1	128.5	335.9	44.1	177.9	3,891.0	322.4	-554.1

Table 5.2 Government Transactions in Nonfinancial Assets; Financial Assets and Liabilities (Financing)

In million Vatu

Tableau 5.2 Opérations du gouvernement en actifs non financiers% 3B actifs et passifs financiers (financement)

Period	Non Financial Asset Non actif financier		Financial Assets Actif Financier		LIABILITIES (FINANCING) PASSIF À COURT TERME (financement)			Net lending / borrowing Prêts nets/ Emprunt	Année	Trimestre
	Fixed assets Actifs fixes	Net acquisition of Nonfinancial assets Acquisition nette d'actifs non financiers	Domestic Intérieurs	Net acquisition of financial assets Acquisition nette d'actifs financiers	Domestic Intérieurs	Foreign étrangers	Net incurrence of liabilities			
2010	3,306.8	3,306.8	-942.4	-942.4	800.0	-34.2	765.8	-1,708.1	2010	
2011	1,880.6	1,880.6	-348.9	-348.9	950.2	282.4	1,232.6	-1,581.5	2011	
2012	1,137.5	1,137.5	-66.9	-66.9	1,388.6	-336.2	1,052.3	-1,104.2	2012	
2013	707.1	707.1	-302.5	-302.5	306.4	-465.2	-158.8	-143.7	2013	
2010 1st	686.6	686.6	148.7	148.7	0.0	-169.0	-169.0	317.7	2010	1er
2nd	822.9	822.9	-362.2	-362.2	0.0	-82.2	-82.2	-280.0		2ème
3rd	727.1	727.1	288.1	288.1	800	-170.9	629.1	-341.1		3ème
4th	1070.2	1070.2	-1017.0	-1017.0	0.0	387.9	387.9	-1404.7		4ème
2011 1st	758.8	758.8	383.1	383.1	0.0	-78.7	-78.7	461.7	2011	1er
2nd	175.7	175.7	170.3	170.3	750.1	-44.1	706.0	-535.7		2ème
3rd	292.8	292.8	-420.2	-420.2	100.1	-80.0	20.1	-440.4		3ème
4th	653.3	653.3	-482.1	-482.1	100.0	485.1	585.1	-1067.2		4ème
2012 1st	330.7	330.7	396.9	396.9	453.1	-78.9	374.2	22.7	2012	1er
2nd	245.2	245.2	521.8	521.8	601.2	-48.8	552.4	-30.6		2ème
3rd	288.7	288.7	-1161.2	-1161.2	7.9	-159.6	-151.7	-1006.5		3ème
4th	272.9	272.9	175.6	175.6	326.4	-48.9	277.4	-89.8		4ème
2013 1st	195.0	195.0	-109.9	-109.9	0.0	-107.1	-107.1	-2.8	2013	1er
2nd	167.5	167.5	82.8	82.8	-100.0	-104.9	-204.9	287.6		2ème
3rd	178.7	178.7	-381.8	-381.8	406.4	-205.1	201.3	-583.1		3ème
4th	165.9	165.9	106.5	106.5	0.0	-48.1	-48.1	154.6		4ème
2014 1st	64.7	64.7	293.1	293.1	0.0	-210.9	-210.9	504.4	2014	1er
2nd	86.0	86.0	14.3	14.3	-238.4	-40.9	-279.3	236.5		2ème

**Table 6.1 Summary of Overseas Trade**  
**Tableau 6.1 Récapitulatif du commerce extérieur**

**In Million Vatu**  
**En millions de Vatu**

Year	Quarter	EXPORTS F.O.B / EXPORTATION FAB				IMPORTS C.I.F / IMPORTATIONS CAF							Année	Trimestre	
		Domestic Exports Exportation de produits locaux		Re-exports	Total Exports	Imports for Home Consumption / Importations destinées à la Consommation intérieure			Imports for Re- exports	Total Imports	Trade Balance	Balance Ratio			
		Luganville	Port Vila	Total	Ré- exportations	Total des Exportations (E)	Luganville	Port Vila	Total	Importations pour ré- exportations	Total des Importations (I)	Déficit Commercial (E)-(I)	Taux de Couverture (E)/(I)		
2010		2,625	1,855	4,480	214	4,694	3,904	23,486	27,390	119	27,510	(22,792)	0.2	2010	
2011		3,816	2,196	6,012	-	6,012	4,259	22,803	27,062	193	27,256	(21,243)	0.9	2011	
2012		3,305	1,768	5,073	-	5,073	4,075	22,832	26,908	547	27,454	(22,381)	0.7	2012	
2013		2,233	1,419	3,653	-	3,653	4,184	25,262	29,446	207	29,653	(26,000)	0.5	2013	
2010	1st	170	407	577	121	698	692	5,176	5,868	22	5,890	(5,192)	0.1	2010	1er
	2nd	604	450	1,055	35	1,090	830	5,258	6,087	38	6,125	(5,011)	0.2		2ème
	3rd	871	531	1,402	58	1,460	1,213	6,652	7,865	30	7,895	(6,436)	0.2		3ème
	4th	980	467	1,447	-	1,447	1,170	6,401	7,570	30	7,600	(6,153)	0.2		4ème
2011	1st	897	506	1,403	-	1,403	1,039	5,370	6,409	54	6,464	(5,060)	0.2	2011	1er
	2nd	1,038	547	1,585	-	1,585	1,035	5,005	6,040	13	6,053	(4,468)	0.3		2ème
	3rd	823	712	1,534	-	1,534	901	6,337	7,239	29	7,267	(5,733)	0.2		3ème
	4th	1,058	431	1,489	-	1,489	1,284	6,090	7,375	97	7,472	(5,983)	0.2		4ème
2012	1st	761	384	1,145	-	1,145	910	4,661	5,571	110	5,681	(4,536)	0.2	2012	1er
	2nd	938	513	1,451	-	1,451	942	5,610	6,553	110	6,663	(5,211)	0.2		2ème
	3rd	888	403	1,290	-	1,290	1,257	6,331	7,588	279	7,867	(6,577)	0.2		3ème
	4th	719	467	1,186	-	1,186	966	6,230	7,196	48	7,244	(6,057)	0.2		4ème
2013	1st	476	287	764	-	764	1,056	5,531	6,587	35	6,622	(5,858)	0.1	2013	1er
	2nd	498	251	749	-	749	1,041	6,145	7,186	38	7,224	(6,475)	0.1		2ème
	3rd	597	425	1,022	-	1,022	1,014	6,408	7,422	58	7,480	(6,459)	0.1		3ème
	4th	663	455	1,118	-	1,118	1,073	7,178	8,251	75	8,327	(7,209)	0.1		4ème
2014	1st	504	344	848	-	848	998	5,747	6,745	15	6,760	(5,911)	0.1	2014	1er
	2nd	1,341	311	1,652	-	1,652	986	5,558	6,544	32	6,577	(4,925)	0.3		2ème

Source: Department of Customs and Inland Revenue / Service des Douanes et Contributions Indirectes

**Table 6.2 Principal Domestic Exports, in Value**  
**Tableau 6.2 Principales exportations de produits locaux, en valeur**

**In million Vatu**  
**En millions de Vatu**

Year	Quarter	Copra	Coconut oil	Beef veal	Cocoa	Shell	Sawn Timber	Cowhides	Kava	Coffee	Vanilla	Coconut Meal	Live Fish	Alcoholic Drink	Fish	Other products	Total	Année	Trimestre
		Coprah	Huile de coco	Viande bovine	Cacao	Coquillages	Bois débité	Cuir et peaux			Café	Vanille	Farine de coprah	Poisson vivant	Boissons Alcoolisées	Poisson	Autres produits		
2010		579	933	494	384	31	26	15	508	3	5	54	324	209	36	881	4,480	2010	
2011		1,065	1,592	516	247	30	65	29	762	18	5	87	166	175	359	898	6,012	2011	
2012		1,088	1,162	518	258	27	42	27	661	3	11	92	136	161	185	702	5,073	2012	
2013		367	459	326	294	30	165	28	834	6	7	228	88	116	139	566	3,653	2013	
2010	1st	36	-	96	15	-	14	3	83	1	2	-	98	10	10	209	577	2010	1er
	2nd	91	199	117	187	20	6	4	102	-	1	14	45	79	9	182	1,055		2ème
	3rd	148	349	151	100	11	5	5	160	-	1	24	94	74	3	277	1,402		3ème
	4th	304	386	130	82	1	1	3	163	1	1	16	86	45	14	213	1,447		4ème
2011	1st	306	432	136	6	9	3	8	98	1	1	14	46	40	188	115	1,403	2011	1er
	2nd	385	292	128	104	1	31	8	190	7	1	33	49	50	99	206	1,585		2ème
	3rd	205	302	132	88	9	0	6	239	0	2	26	40	45	54	384	1,534		3ème
	4th	169	565	121	48	11	30	7	234	10	0	14	30	41	17	193	1,489		4ème
2012	1st	434	208	123	10	0	8	7	97	0	3	14	48	30	29	133	1,145	2012	1er
	2nd	298	317	135	70	1	20	7	189	0	5	26	56	21	69	237	1,451		2ème
	3rd	253	280	120	97	14	5	6	195	2	1	28	17	60	74	138	1,290		3ème
	4th	102	357	140	81	12	8	7	179	0	2	23	16	51	13	194	1,186		4ème
2013	1st	143	90	89	23	6	15	8	168	3	2	25	20	36	55	83	764	2013	1er
	2nd	83	95	73	98	8	10	4	223	1	1	17	25	21	33	57	749		2ème
	3rd	48	103	61	123	7	47	10	255	1	1	62	20	29	33	221	1,022		3ème
	4th	179	170	104	51	9	92	5	188	1	3	40	22	30	19	206	1,118		4ème
2014	1st	223	112	80	9	19	4	5	124	1	1	15	61	17	8	168	848	2014	1er
	2nd	593	240	195	155	0	22	8	218	2	1	28	27	3	1	159	1,652		2ème

Source: Department of Customs and Inland Revenue / Service des Douanes et Contributions Indirectes

Table 6.3 Principal Domestic Exports, in Quantity

Tableau 6.3 Principales exportations, en quantité

In tonnes

En tonnes

Year	Quarter	Copra	Coconut oil	Beef veal	Cocoa	Shell	Cowhides	Kava	Coffee	Vanilla	Coconut Meal	Root crops	Live Fish	Fish	Année	Trimestre
		Coprah	Huile de coco	Viande bovine	Cacao	Coquillages	Cuir et peaux		Café	Vanille	Farine de coprah	Récolte de racines	Poisson vivant	Poisson		
2010		12,133	10,325	1,123	1,525	10	226	498	4	2	5,222	-	238	1,445	2010	
2011		13,596	12,000	1,104	1,068	10	336	734	27	1	6,917	4	205	3,116	2011	
2012		16,846	10,011	760	1,231	9	387	643	3	3	6,082	-	74	486	2012	
2013		12,508	5,691	703	1,649	7	402	819	6	2	7,692	-	77	391	2013	
2010	1st	1,067	-	214	60	-	50	69	1	-	-	-	47	159	2010	1er
	2nd	2,042	2,579	279	651	6	53	115	-	-	1,327	-	46	400		2ème
	3rd	3,419	3,943	341	438	3	81	154	1	-	2,258	-	38	460		3ème
	4th	5,605	3,803	289	375	-	42	160	2	-	1,638	-	107	426		4ème
2011	1st	3,768	3,461	300	25	3	102	94	1	0	1,172	0	102	1,973	2011	1er
	2nd	4,526	1,956	270	446	0	88	186	11	0	2,534	-	41	452		2ème
	3rd	3,033	2,299	290	380	3	64	225	0	1	2,137	4	40	265		3ème
	4th	2,269	4,284	245	217	4	81	230	15	0	1,074	-	22	425		4ème
2012	1st	6,188	1,674	236	40	0	80	99	1	1	1,079	-	-	39	2012	1er
	2nd	5,098	2,696	284	381	0	83	184	0	2	1,628	-	56	196		2ème
	3rd	3,791	2,423	240	539	4	105	187	2	0	1,708	-	18	230		3ème
	4th	1,769	3,218	271	454	4	119	173	0	1	1,667	-	21	43		4ème
2013	1st	4,022	838	205	136	2	114	158	3	1	1,660	-	13	150	2013	1er
	2nd	2,438	1,689	142	491	-	72	223	1	0	1,162	-	21	84		2ème
	3rd	1,326	1,012	129	724	2	120	252	1	0	2,966	-	25	105		3ème
	4th	4,722	2,152	227	298	3	96	186	1	1	1,904	-	18	52		4ème
2014	1st	4,123	1,524	183	49	5	61	119	1	0	515	-	54	25	2014	1er
	2nd	9,102	2,523	472	671	16	92	214	2	0	1,469	-	17	0		2ème

Source: Department of Customs and Inland Revenue / Service des Douanes et Contributions Indirectes

**Table 6.4 Principal Commodity Average Export Prices****Tableau 6.4 Prix moyens à l'exportation des principaux produits****Vatu per Kg**

Year	Quarter	Copra	Coconut oil	Beef veal	Cocoa	Shell	Cowhides	Kava	Coffee	Vanilla	Coconut meal	Root crops	Live Fish	Année	Trimestre
		Coprah	Huile de coco	Viande bovine	Cacao	Coquillages	Cuirs et peaux		Café	Vanille	Farine de coprah	Récolte de racines	Poisson vivant		
2010		48	90	440	251	3,164	64	1,020	725	3,500	10	103	1,361	2010	
2011		78	133	467	231	2,993	86	1,037	655	3,141	13	185	809	2011	
2012		67	116	503	182	3,063	69	1,028	959	3,226	15	-	1,849	2012	
2013		36	83	464	178	3,019	49	1,018	1,018	3,271	18	-	1,146	2013	
2010	1st	33	-	446	251	-	58	1,204	978	3,512	-	103	2,088	2010	1er
	2nd	44	77	420	286	3,175	68	884	864	3,342	10	-	983		2ème
	3rd	43	88	443	227	3,129	60	1,041	922	3,219	11	-	2,495		3ème
	4th	54	102	450	220	3,500	76	1,018	543	3,914	10	-	802		4ème
2011	1st	81	125	453	237	3,040	32	1,051	615	3,160	12	125	1,128	2011	1er
	2nd	85	150	474	233	3,067	89	1,020	645	3,091	13	-	5,067		2ème
	3rd	68	131	455	233	2,938	96	1,062	959	3,113	12	-	9,625		3ème
	4th	74	132	491	222	2,992	85	1,021	655	3,455	13	-	8,651		4ème
2012	1st	70	124	521	258	3,333	82	985	673	3,634	13	-	1,221	2012	1er
	2nd	65	118	475	184	3,412	86	1,028	1,024	3,072	16	-	988		2ème
	3rd	67	116	502	180	3,092	58	1,042	1,013	3,162	17	-	942		3ème
	4th	58	111	518	178	3,015	58	1,038	1,048	3,176	14	-	795		4ème
2013	1st	35	108	433	167	2,971	72	1,062	1,000	3,137	15	-	1,593	2013	1er
	2nd	34	57	514	200	3,011	60	999	1,000	3,652	15	-	1,227		2ème
	3rd	36	102	472	170	3,035	86	1,013	1,097	3,106	21	-	821		3ème
	4th	38	79	457	170	3,048	57	1,010	1,035	3,346	21	-	1,189		4ème
2014	1st	54	74	434	185	3,511	85	1,039	1,007	3,205	29	-	1,126	2014	1er
	2nd	65	95	414	231	3,133	87	1,020	881	3,455	19	-	1,551		2ème

Source: Department of Customs and Inland Revenue / Service des Douanes et Contributions Indirectes

**Table 6.5 Domestic Exports by Country Groupings, in Value**  
**Tableau 6.5 Exportation de produits locaux par pays-clients, en valeur**

**In million Vatu**  
**En millions de Vatu**

Year	Quarter	European Community	Japan	Australia	New Caledonia	South Korea	New Zealand	Other MSG*	Other Countries	Total	Année	Trimestre
		Communauté Européene	Japon	Australie	Nouvelle Calédonie	Corée du Sud	Nouvelle Zélande	Autres GFLM*	Autres Pays			
2010		215	204	547	370	14	308	560	2,264	4,480	2010	
2011		181	317	679	342	19	686	888	2,900	6,012	2011	
2012		70	305	1,102	265	21	171	712	2,426	5,073	2012	
2013		53	225	858	311	9	148	652	1,397	3,653	2013	
2010	1st	19	22	90	49	7	27	131	232	577	2010	1er
	2nd	27	54	65	134	0	65	87	623	1,055		2ème
	3rd	62	72	293	94	5	96	171	608	1,402		3ème
	4th	107	56	99	93	1	121	171	800	1,447		4ème
2011	1st	34	74	251	58	0	101	288	597	1,404	2011	1er
	2nd	59	117	250	78	3	188	188	701	1,585		2ème
	3rd	38	76	64	103	14	292	218	729	1,534		3ème
	4th	50	51	114	103	1	105	193	872	1,489		4ème
2012	1st	31	57	337	32	5	57	146	479	1,145	2012	1er
	2nd	11	113	228	93	1	39	174	793	1,451		2ème
	3rd	8	102	69	72	1	47	183	808	1,290		3ème
	4th	20	33	468	68	15	28	208	346	1,186		4ème
2013	1st	8	65	163	57	8	25	147	291	764	2013	1er
	2nd	8	61	153	51	-	24	126	326	749		2ème
	3rd	22	52	263	95	1	52	173	364	1,022		3ème
	4th	16	47	280	108	-	46	206	416	1,118		4ème
2014	1st	13	31	186	45	6	36	94	438	848	2014	1er
	2nd	28	134	341	115	11	36	131	857	1,652		2ème

Source: Department of Customs and Inland Revenue / Service des Douanes et Contributions Indirectes

\* Solomon Islands, Fiji and PNG

**Table 6.6 Imports Cleared for Home Consumption, in Value**  
**Tableau 6.6 Importations destinées à la consommation intérieure par produit selon la Classification Type pour le Commerce International, en valeur**

**In million Vatu**  
**En million de Vatu**

Year	Quarter	Food & Live Animals	Beverages & Tobacco	Crude Materials Except Fuels	Mineral Fuels	Oils, Fats & Waxes	Chemical Products	Basic Manufactured Products	Machines & Transport Equipment	Miscellaneous Manufactured Goods	Goods N.E.C.	Total	Année	Trimestre
		Produits alimentaires et animaux vivants	Boissons et tabacs	Matières brutes non combustibles	Energie fossile	Huiles et graisses animales et végétales	Produits chimiques	Produits manufacturés	Machines et matériels de transports	Produits manufacturés divers	Articles et transactions, N.C.A			
2010		5,108	1,023	419	3,618	133	2,923	3,817	7,252	2,735	361	27,390	2010	
2011		5,537	1,038	379	4,835	129	2,855	3,566	5,542	2,820	362	27,062	2011	
2012		5,307	1,153	432	4,621	141	2,809	3,590	5,964	2,575	314	26,907	2012	
2013		6,068	1,146	510	4,599	124	2,685	3,950	6,881	3,165	319	29,446	2013	
2010	1st	1,028	233	91	562	25	661	845	1,889	469	66	5,868	2010	1er
	2nd	950	170	93	1,205	32	680	808	1,543	522	84	6,087		2ème
	3rd	1,516	239	128	1,122	27	765	1,166	2,019	773	111	7,865		3ème
	4th	1,614	381	107	729	50	817	999	1,801	972	100	7,570		4ème
2011	1st	1,044	216	77	1,208	22	750	935	1,527	582	49	6,410	2011	1er
	2nd	1,343	239	74	866	29	729	822	1,134	705	98	6,039		2ème
	3rd	1,551	297	123	1,266	35	699	946	1,468	773	80	7,238		3ème
	4th	1,599	286	103	1,495	43	678	864	1,414	759	134	7,375		4ème
2012	1st	1,103	303	79	855	41	630	736	1,243	494	86	5,571	2012	1er
	2nd	1,059	225	90	1,442	20	647	804	1,585	607	74	6,553		2ème
	3rd	1,552	257	128	1,471	44	675	1,087	1,615	684	75	7,588		3ème
	4th	1,594	367	136	853	36	858	962	1,521	791	79	7,196		4ème
2013	1st	1,394	236	88	1,204	24	548	1,006	1,332	657	100	6,587	2013	1er
	2nd	1,349	315	154	1,503	29	689	879	1,457	731	80	7,186		2ème
	3rd	1,459	293	126	1,210	24	703	1,039	1,745	751	74	7,422		3ème
	4th	1,867	302	142	683	47	745	1,027	2,347	1,026	65	8,251		4ème
2014	1st	1,065	264	81	1,666	15	565	895	1,499	618	76	6,745	2014	1er
	2nd	1,327	204	94	1,301	25	505	686	1,642	718	41	6,544		2ème

Source: Department of Customs and Inland Revenue / Service des Douanes et Contributions Indirectes



**Table 6.7 Imports for Home Consumption by main Countries of Consignment, Value**  
**Tableau 6.7 Importations pour consommation intérieure par principaux pays fournisseurs, en valeur**

**In million Vatu**  
**En millions de Vatu**

Year	Quarter	Australia	New Zealand	Fiji	Japan	France	New Caledonia	Hong Kong	Singapore	Other Countries	Total	Année	Trimestre
		Australie	Nouvelle Zélande	Iles Fidji	Japon		Nouvelle Calédonie	Hong-Kong	Singapour	Autres Pays			
2010		8,540	3,725	2,138	1,007	661	632	290	3,456	6,941	27,390	2010	
2011		8,092	3,103	1,686	696	875	471	1,246	4,928	5,965	27,062	2011	
2012		8,292	3,424	2,089	655	751	488	482	4,544	6,183	26,907	2012	
2013		8,035	3,686	2,782	1,126	1,197	335	546	4,571	7,168	29,446	2013	
2010	1st	1,683	936	610	347	125	109	45	387	1,625	5,868	2010	1er
	2nd	1,727	885	512	161	190	92	30	1,146	1,343	6,087		2ème
	3rd	2,537	952	537	193	194	255	124	1,117	1,956	7,865		3ème
	4th	2,593	952	479	306	152	175	91	806	2,016	7,570		4ème
2011	1st	1,798	849	476	192	248	122	125	1,182	1,417	6,410	2011	1er
	2nd	1,925	792	557	204	263	86	58	843	1,311	6,039		2ème
	3rd	2,234	869	498	170	240	136	91	1,296	1,704	7,239		3ème
	4th	2,135	593	155	130	124	127	971	1,606	1,533	7,375		4ème
2012	1st	1,757	663	447	115	225	168	88	818	1,289	5,571	2012	1er
	2nd	1,946	787	466	108	175	68	132	1,424	1,446	6,553		2ème
	3rd	2,081	695	187	113	223	125	980	1,750	1,434	7,588		3ème
	4th	2,508	994	483	208	163	128	148	868	1,697	7,196		4ème
2013	1st	1,804	739	652	330	180	66	96	1,192	1,527	6,587	2013	1er
	2nd	1,991	934	644	165	275	78	177	1,460	1,463	7,186		2ème
	3rd	2,048	913	643	372	224	105	107	1,196	1,814	7,422		3ème
	4th	2,191	1,099	843	259	519	85	167	724	2,364	8,251		4ème
2014	1st	1,726	683	477	163	288	60	54	1,650	1,642	6,745	2014	1er
	2nd	1,559	837	637	308	223	80	124	1,415	1,361	6,544		2ème

Source: Department of Customs and Inland Revenue / Service des Douanes et Contributions Indirectes

Table 6.8 Selected ten major imported items, In Value

In Million Vatu

Tableau 6.8 Les dix premiers articles d'importation, en valeur

En million de Vatu

Year	Quarter	Cigarettes & tobacco	Distillate fuels (ADO)	Jet fuel and aviation kerosene	Motor spirit (PMS)	Motor Vehicles transport	Personal & Household effects	Pharmaceutical products	Cement	Rice	Wheat flour/ mesline flour	Total Value of Major ten items	Percentage share of total imports	Année	Trimestre
		Tabac et cigarettes	Fuels distillés	Kérosene	Essence pour automobiles	Véhicules à moteur	Effets personnels	Produits pharmaceutiques	Ciment	Riz	Farine	Montant total	Pourcentage du total des importations		
2010		300	2,195	414	557	190	330	1,423	422	1,068	312	7,211	26.2	2010	
2011		322	3,050	582	660	169	356	1,427	371	968	383	8,287	30.4	2011	
2012		312	2,784	614	680	298	310	1,322	444	1,100	315	8,179	29.8	2012	
2013		274	2,638	783	667	150	314	1,060	403	1,282	409	7,979	29.1	2013	
2010	1st	73	328	69	62	34	65	322	149	196	53	1,350	22.9	2010	1er
	2nd	49	755	128	194	29	82	361	93	116	83	1,890	30.9		2ème
	3rd	55	748	65	187	80	84	376	103	381	85	2,164	27.4		3ème
	4th	124	364	151	115	47	99	364	77	375	91	1,806	23.8		4ème
2011	1st	65	808	87	148	71	49	416	106	100	79	1,929	29.8	2011	1er
	2nd	66	558	54	113	27	97	361	107	244	104	1,730	28.6		2ème
	3rd	107	812	218	126	41	78	324	91	385	90	2,273	31.3		3ème
	4th	83	873	223	272	30	132	327	67	238	111	2,356	31.5		4ème
2012	1st	91	476	139	146	27	86	318	82	200	65	1,629	28.7	2012	1er
	2nd	85	945	122	233	198	72	313	125	186	64	2,344	35.2		2ème
	3rd	46	867	239	193	36	74	310	143	387	104	2,399	30.5		3ème
	4th	89	496	114	109	36	78	381	94	327	83	1,807	24.9		4ème
2013	1st	63	664	229	204	43	99	254	94	292	101	2,042	30.8	2013	1er
	2nd	75	1,001	156	206	29	78	253	84	274	97	2,254	31.2		2ème
	3rd	95	727	164	202	40	73	272	137	314	98	2,122	28.4		3ème
	4th	40	246	234	55	39	64	281	88	402	113	1,562	18.8		4ème
2014	1st	78	972	331	236	37	76	276	107	251	66	2,429	36.0	2014	1er
	2nd	12	869	151	198	39	40	197	104	245	113	1,966	29.9		2ème

Source: Department of Customs and Inland Revenue / Service des Douanes et Contributions Indirectes - (revised table with new additional items from 2000 - 2012)

**Table 7.1 Summary of Internal Migration Arrival Statistics**  
**Tableau 7.1 Résumé des échanges migratoires avec l'extérieur**

Year	Quarter	ARRIVALS / ARRIVEES									DAY VISITORS	TOTAL VISITORS	Année	Trimestre
		PORT VILA			LUGANVILLE			TOTAL						
		Residents Résidents ( a )	Visitors Visiteurs ( b )	Total ( a ) + ( b )	Residents Résidents ( c )	Visitors Visiteurs ( d )	Total ( c ) + ( d )	Residents Résidents ( a ) + ( c )	Visitors Visiteurs ( b ) + ( d )	Total				
2010		20,531	94,909	115,440	522	2,271	2,793	21,053	97,180	118,233	140,468	237,648	2010	
2011		21,752	91,107	112,859	521	2,853	3,374	22,273	93,960	116,233	154,938	248,898	2011	
2012		22,594	105,611	128,205	364	2,550	2,914	22,958	108,161	131,119	213,243	321,404	2012	
2013		25,116	106,466	131,582	495	3,643	4,138	25,611	110,109	135,720	240,483	350,592	2013	
2010	1st	4,406	19,668	24,074	106	229	335	4,512	19,897	24,409	33,930	53,827	2010	1er
	2nd	5,271	20,976	26,247	112	547	659	5,383	21,523	26,906	33,316	54,839		2ème
	3rd	5,355	28,638	33,993	132	875	1,007	5,487	29,513	35,000	32,186	61,699		3ème
	4th	5,499	25,627	31,126	172	620	792	5,671	26,247	31,918	41,036	67,283		4ème
2011	1st	4,471	16,313	20,784	112	287	399	4,583	16,600	21,183	40,965	57,565	2011	1er
	2nd	5,234	21,483	26,717	125	698	823	5,359	22,181	27,540	51,119	73,300		2ème
	3rd	5,966	28,877	34,843	132	1,020	1,152	6,098	29,897	35,995	31,988	61,885		3ème
	4th	6,081	24,434	30,515	152	848	1,000	6,233	25,282	31,515	30,866	56,148		4ème
2012	1st	5,097	19,385	24,482	96	413	509	5,193	19,798	24,991	63,601	83,399	2012	1er
	2nd	5,637	24,846	30,483	65	464	529	5,702	25,310	31,012	45,833	71,143		2ème
	3rd	5,605	33,512	39,117	76	845	921	5,681	34,357	40,038	43,280	77,637		3ème
	4th	6,255	27,868	34,123	127	828	955	6,382	28,696	35,078	60,529	89,225		4ème
2013	1st	4,986	19,049	24,035	125	471	596	5,111	19,520	24,631	65,678	85,198	2013	1er
	2nd	6,505	26,315	32,820	147	1,223	1,370	6,652	27,538	34,190	59,842	87,380		2ème
	3rd	6,665	33,412	40,077	78	836	914	6,743	34,248	40,991	45,771	80,019		3ème
	4th	6,960	27,690	34,650	145	1,113	1,258	7,105	28,803	35,908	69,192	97,995		4ème
2014	1st	5,487	19,335	24,822	140	497	637	5,627	19,832	25,459	67,627	87,459	2014	1er
	2nd	6,200	24,397	30,597	144	1,136	1,280	6,344	25,533	31,877	55,660	81,193		2ème

Source : Department of Immigration / Services de l'Immigration

**Table 7.2 Arrivals of Residents by Nationality**  
**Tableau 7.2 Résidents par nationalité**

Year	Quarter	Ni-Vanuatu	Australian	French	British	New Zealander	Asian	Pacific Islanders	North American	Other Countries	TOTAL	Année	Trimestre
		Australiens	Français	Britanniques	Néo-Zélandais	Asiatiques	Iles du Pacifique	Amérique du Nord	Autres Pays				
2010		11,794	3,700	1,894	132	1,436	504	768	496	330	21,053	2010	
2011		12,508	3,867	1,802	244	1,370	719	1,090	352	321	22,273	2011	
2012		14,317	3,629	1,526	203	1,236	696	686	370	295	22,958	2012	
2013		15,410	4,096	1,782	167	1,293	915	1,007	566	375	25,611	2013	
2010	1st	2,232	870	533	15	392	94	149	153	73	4,512	2010	1er
	2nd	3,431	854	392	26	318	117	101	88	55	5,383		2ème
	3rd	2,897	929	497	46	369	170	319	152	108	5,487		3ème
	4th	3,234	1,046	472	45	357	122	199	103	93	5,671		4ème
2011	1st	1,991	976	506	62	353	171	371	73	80	4,583	2011	1er
	2nd	3,227	885	397	56	334	157	148	83	72	5,359		2ème
	3rd	3,586	967	431	51	337	190	347	86	103	6,098		3ème
	4th	3,704	1,039	468	75	346	201	224	110	66	6,233		4ème
2012	1st	3,019	845	382	56	335	175	234	78	69	5,193	2012	1er
	2nd	3,599	912	363	46	308	205	130	82	57	5,702		2ème
	3rd	3,619	853	388	50	293	152	141	108	77	5,681		3ème
	4th	4,080	1,019	393	51	300	164	181	102	92	6,382		4ème
2013	1st	2,586	983	453	46	362	209	266	110	96	5,111	2013	1er
	2nd	4,204	1,002	423	69	337	227	187	108	95	6,652		2ème
	3rd	4,114	1,033	430	39	282	240	337	163	105	6,743		3ème
	4th	4,506	1,078	476	13	312	239	217	185	79	7,105		4ème
2014	1st	2,613	1,158	545	17	369	239	377	213	96	5,627	2014	1er
	2nd	3,933	977	398	32	304	218	242	142	98	6,344		2ème

Source : Department of Immigration / Services de l'Immigration

**Table 7.3 Visitor Arrivals by Usual Country of Residence**  
**Tableau 7.3 Visiteurs par pays de résidence habituelle**

Year Quarter	Australia	New Zealand	New Caledonia	Other Pacific Countries	Europe	North America	Japan	Other Countries	TOTAL	Année Trimestre
	Australie	Nouvelle-Zélande	Nouvelle-Calédonie	Autres Pays du Pacifique	Europe	Amérique du Nord	Japon	Autres Pays		
2010	58,760	11,927	11,410	4,719	4,888	2,395	517	2,564	97,180	2010
2011	57,843	11,399	11,376	3,397	5,265	1,922	630	2,128	93,960	2011
2012	65,405	14,430	13,138	4,313	5,491	2,094	705	2,585	108,161	2012
2013	65,776	15,068	12,515	4,874	5,544	2,614	659	3,059	110,109	2013
2010 1st	11,590	1,837	2,787	1,312	1,066	569	143	594	19,897	2010 1er
2nd	12,575	3,146	2,373	966	1,074	598	101	692	21,523	2ème
3rd	17,754	4,457	3,027	1,195	1,536	684	137	723	29,513	3ème
4th	16,842	2,488	3,223	1,246	1,212	544	137	555	26,247	4ème
2011 1st	10,311	1,402	2,024	887	1,006	350	139	481	16,600	2011 1er
2nd	13,592	2,474	2,829	837	1,262	610	123	454	22,181	2ème
3rd	17,861	4,857	3,063	839	1,801	618	215	643	29,897	3ème
4th	16,079	2,666	3,460	834	1,196	344	153	550	25,282	4ème
2012 1st	12,010	1,752	2,979	927	1,040	366	160	564	19,798	2012 1er
2nd	15,360	3,349	2,915	1,034	1,268	555	169	660	25,310	2ème
3rd	20,620	5,908	3,343	1,182	1,741	628	212	723	34,357	3ème
4th	17,415	3,421	3,901	1,170	1,442	545	164	638	28,696	4ème
2013 1st	11,444	1,768	3,024	1,015	1,092	424	94	659	19,520	2013 1er
2nd	16,511	3,854	3,068	1,276	1,326	666	159	678	27,538	2ème
3rd	20,532	6,104	2,762	1,286	1,725	731	202	906	34,248	3ème
4th	17,289	3,342	3,661	1,297	1,401	793	204	816	28,803	4ème
2014 1st	11,413	1,696	3,182	1,103	1,078	541	123	696	19,832	2014 1er
2nd	14,410	4,270	2,834	1,045	1,225	629	175	945	25,533	2ème

Source : Department of Immigration / Services de l'Immigration

**Table 7.4 Visitor Arrivals by Purpose of Visit****Tableau 7.4 Visiteurs selon le motif du voyage**

Year	Quarter	VISITORS VISITEURS					TOTAL	Année	Trimestre
		Stop Over Escale	Holiday Vacances	Visiting Friends and Relatives Visite à des amis ou à la famille	Business, Meeting, Conference Affaires, réunion, conférence	Other Purposes Autres motifs			
2010		692	80,681	6,079	9,615	113	97,180	2010	
2011		790	75,821	7,320	9,933	96	93,960	2011	
2012		602	88,085	7,910	11,294	270	108,161	2012	
2013		613	89,253	7,755	9,079	3,409	110,109	2013	
2010	1st	217	16,122	1,147	2,409	2	19,897	2010	1er
	2nd	157	17,330	1,473	2,554	10	21,523		2ème
	3rd	205	24,105	1,988	3,143	72	29,513		3ème
	4th	113	23,124	1,471	1,510	29	26,247		4ème
2011	1st	198	13,066	1,361	1,969	6	16,600	2011	1er
	2nd	253	17,495	1,723	2,686	24	22,181		2ème
	3rd	213	24,624	2,120	2,885	55	29,897		3ème
	4th	126	20,636	2,116	2,393	11	25,282		4ème
2012	1st	95	15,661	1,828	2,136	78	19,798	2012	1er
	2nd	234	20,470	1,660	2,912	34	25,310		2ème
	3rd	145	28,742	2,141	3,271	58	34,357		3ème
	4th	128	23,212	2,281	2,975	100	28,696		4ème
2013	1st	136	15,303	1,627	2,139	315	19,520	2013	1er
	2nd	123	22,055	1,846	2,512	1,002	27,538		2ème
	3rd	218	28,311	2,187	2,430	1,102	34,248		3ème
	4th	136	23,584	2,095	1,998	990	28,803		4ème
2014	1st	145	15,996	1,357	1,425	909	19,832	2014	1er
	2nd	85	20,671	1,684	2,296	797	25,533		2ème

Source : Department of Immigration / Services de l'Immigration

**Table 8 Exchange Rates: Averages of Rates Used by the Collector of Customs Department****Tableau 8 Taux de change: moyennes des taux utilisés par le Service des Douanes**

Year	Quarter	For 100 Vatu / Pour 100 vatu										Année	Trimestre
		\$AUD	£Stg	CFP	\$USD	\$NZD	¥JPY	\$FJD	\$HKD	€EUR	\$SGD		
2010		1.07	0.64	88.07	0.97	1.35	86.12	1.83	7.47	0.74	1.34	2010	
2011		1.02	0.67	89.38	1.04	1.32	84.18	1.83	8.05	0.76	1.32	2011	
2012		1.01	0.66	96.46	1.03	1.28	82.57	1.82	7.93	0.81	1.30	2012	
2013		1.05	0.66	91.60	1.00	1.24	97.10	1.77	7.73	0.77	1.27	2013	
2010	1st	1.09	0.63	83.68	0.97	1.37	88.19	1.84	7.46	0.71	1.37	2010	1er
	2nd	1.08	0.65	89.01	0.96	1.36	89.30	1.83	7.38	0.75	1.34		2ème
	3rd	1.06	0.63	90.26	0.95	1.34	83.08	1.82	7.34	0.76	1.31		3ème
	4th	1.04	0.65	89.32	1.00	1.35	83.92	1.83	7.71	0.75	1.33		4ème
2011	1st	1.06	0.66	90.72	1.02	1.34	84.24	1.83	7.88	0.76	1.32	2011	1er
	2nd	1.00	0.66	88.31	1.05	1.33	87.16	1.84	8.14	0.74	1.32		2ème
	3rd	1.00	0.68	87.45	1.07	1.27	84.94	1.83	8.26	0.76	1.32		3ème
	4th	1.02	0.66	91.03	1.02	1.32	80.38	1.82	7.91	0.77	1.33		4ème
2012	1st	1.02	0.67	95.49	1.04	1.29	82.48	1.82	8.01	0.80	1.33	2012	1er
	2nd	1.01	0.66	95.01	1.02	1.29	83.13	1.82	7.86	0.80	1.30		2ème
	3rd	1.00	0.67	99.00	1.02	1.28	81.25	1.82	7.86	0.83	1.30		3ème
	4th	1.00	0.66	96.34	1.03	1.26	83.41	1.81	8.00	0.81	1.28		4ème
2013	1st	1.02	0.68	93.93	1.03	1.25	94.10	1.82	7.98	0.79	1.29	2013	1er
	2nd	1.02	0.68	94.91	1.02	1.24	99.88	1.63	7.89	0.80	1.29		2ème
	3rd	1.08	0.65	89.16	0.97	1.25	95.82	1.82	7.50	0.75	1.26		3ème
	4th	1.07	0.63	88.41	0.99	1.21	98.61	1.82	7.56	0.75	1.26		4ème
2014	1st	1.10	0.60	87.61	0.97	1.19	100.84	1.81	7.68	0.73	1.27	2014	1er
	2nd	1.08	0.61	87.99	1.00	1.18	101.82	1.81	7.68	0.74	1.27		2ème

Source: Department of Customs and Inland Revenue / Service des Douanes et Contributions Indirectes

**TRANSPORT**

**Table 9 Private Motor Vehicle Registrations in Port Vila and Luganville**

**Tableau 9 Immatriculation de véhicules privés à Port-Vila et Luganville**

Year	Quarter	Motorcars Autos	Pick-Ups Camionnettes	Trucks Camions	Buses Autobus, minibus	Motor-cycle Motocyclettes	Total	Année	Trimestre
2010		380	360	98	209	110	1,157	2010	
2011		426	355	68	229	94	1,162	2011	
2012		353	329	41	226	77	1,026	2012	
2013		350	461	60	243	117	1,231	2013	
2010	1st	106	67	25	40	36	274	2010	1er
	2nd	101	92	26	44	25	288		2ème
	3rd	76	103	27	63	22	291		3ème
	4th	97	98	20	62	27	304		4ème
2011	1st	96	94	11	64	25	280	2011	1er
	2nd	115	95	23	82	25	340		2ème
	3rd	118	84	22	39	23	286		3ème
	4th	97	82	12	44	21	256		4ème
2012	1st	103	74	16	59	27	279	2012	1er
	2nd	85	88	6	51	13	243		2ème
	3rd	98	94	9	70	18	289		3ème
	4th	67	73	10	46	19	215		4ème
2013	1st	82	102	22	68	9	283	2013	1er
	2nd	95	158	18	55	40	366		2ème
	3rd	100	102	12	71	37	322		3ème
	4th	73	99	8	49	31	260		4ème
2014	1st	132	37	8	58	13	248	2014	1er
	2nd	124	57	19	48	34	282		2ème

Source: Rates and Tax Office, Department of Customs and Inland Revenue / Bureau de Patente, Service des Douanes et des Contributions Indirectes



**Table 10 Number of Provident Fund Contributing Members / Formal employment by sex****Tableau 10 Nombre de membres de la caisse de prévoyance / Emploi par sexe**

Year	Quarter	Male		Female		Total	Année	Trimestre
		Masculin	%	Féminin	%			
2010		10,265	60	6,925	40	17,190	2010	
2011		10,362	60	6,998	40	17,360	2011	
2012		12,257	59	8,488	41	20,745	2012	
2013		12,430	58	8,929	42	21,359	2013	
2010	1st	9,901	60	6,546	40	16,447	2010	1er
	2nd	9,856	60	6,692	40	16,548		2ème
	3rd	9,854	60	6,608	40	16,462		3ème
	4th	10,265	60	6,925	40	17,190		4ème
2011	1st	10,239	60	6,957	40	17,196	2011	1er
	2nd	9,724	59	6,730	41	16,454		2ème
	3rd	8,729	59	6,047	41	14,776		3ème
	4th	10,362	60	6,998	40	17,360		4ème
2012	1st	10,205	59	7,030	41	17,235	2012	1er
	2nd	9,535	59	6,591	41	16,126		2ème
	3rd	10,520	59	7,266	41	17,786		3ème
	4th	12,257	59	8,488	41	20,745		4ème
2013	1st	9,837	59	6,888	41	16,725	2013	1er
	2nd	10,599	59	7,481	41	18,080		2ème
	3rd	12,305	58	8,824	42	21,129		3ème
	4th	12,430	58	8,929	42	21,359		4ème
2014	1st	12,266	58	8,792	42	21,058	2014	1er
	2nd	12,324	58	8,967	42	21,291		2ème

Source : Vanuatu National Provident Fund (VNPF) / Caisse Nationale de Prévoyance du Vanuatu (CNPV)

(The fourth quarter of the year represents an updated annual figure)

## FOR MORE INFORMATION.....

*INTERNET*            [www.vnso.gov.vu](http://www.vnso.gov.vu) the Vanuatu National Statistics Office website is the best place to access to summary data from our quarterly publications, or Email [stats@vanuatu.gov.vu](mailto:stats@vanuatu.gov.vu)

### *REGULAR PUBLICATIONS*

*Annual*                      National Accounts of Vanuatu 2012  
Vanuatu Statistics Pocket Book 2012

*Quarterly*                      Quarterly Statistical Indicators, June Quarter of 2014  
Consumer Price Index, June Quarter 2014

*Monthly*                      Tourism and Migration, June 2014  
Overseas Trade, June 2014

### *SPECIAL PUBLICATIONS*

2009 National Population and Housing Census –Gender Monograph “Women and Men in Vanuatu”  
2009 National Population and Housing Census – Basic Tables Report Volume 1  
2009 National Population and Housing Census – Analytical Report Volume 2  
2009 National Population and Housing Census – Youth Monograph  
Census of Agriculture 2007 (Thematic Studies in Fisheries and Forestry)  
Census of Agriculture 2007, Main Report  
Vanuatu Poverty Analysis Report, 2006 Household and Income Expenditure Survey  
Vanuatu Visitor Survey Report 2004  
Vanuatu Statistical Year Book, 2002  
Annual Business Survey, 2001  
Vanuatu Labour Market Survey 2000  
Informal Sector Survey 2000