

STATISTICS UPDATE: OVERSEAS TRADE

SEPTEMBER 2011 HIGHLIGHTS

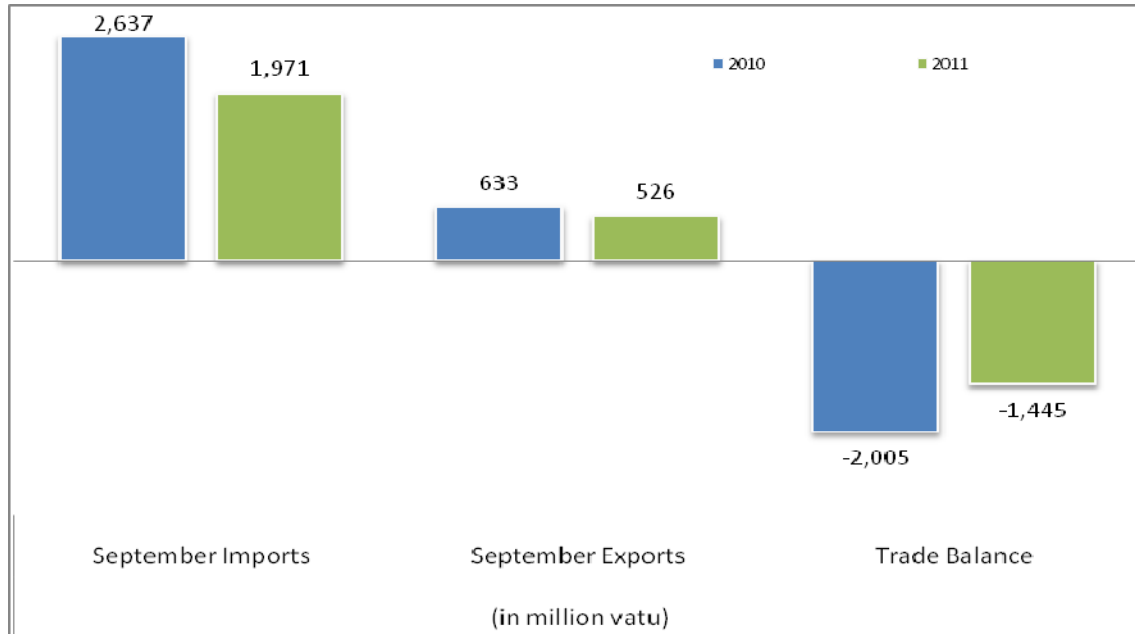


Figure 1: Terms of trade, August 2010 and August 2011

According to September 2011, trade statistics recorded a trade deficit of 1,445 million vatu indicating an improvement of 560 million vatu compared to September 2010. The improvement was due to a decrease of 25% in imports over the corresponding period of 2010.

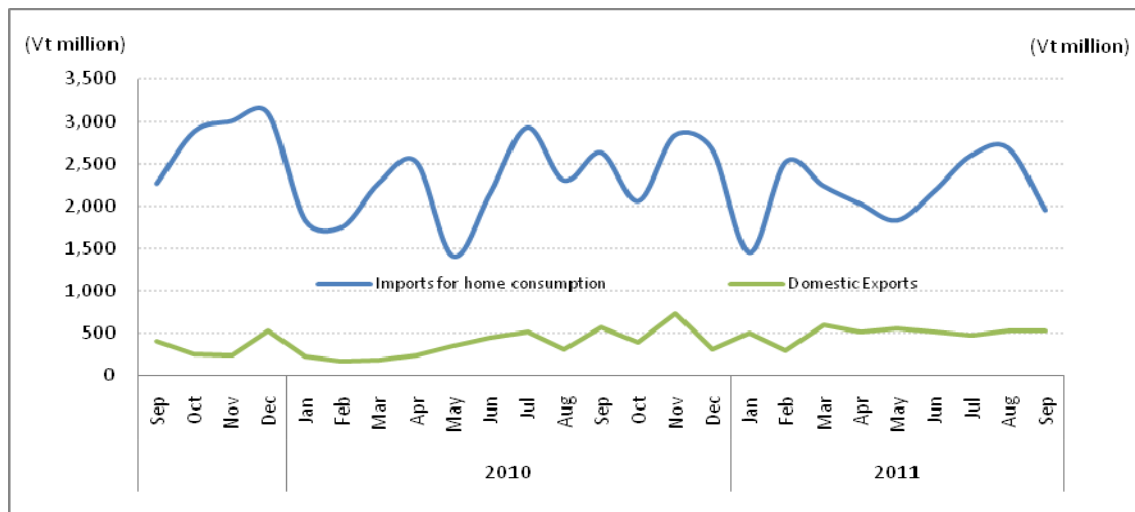


Figure 2: Overseas trade exports and imports (million vatu)

EXPORTS

In September 2011, Copra constituted 21% of the total domestic exports in vatu terms, followed by kava 14%, beef 9%, fish 5%, , alcoholic drinks and coconut meal 3% each while livefish and cocoa make up 2% each. Other includes products such as: Sandal wood oil, dried sharkfins, black bean seeds, scrap metal iron and personal effects.

(See attached Table 2, Table 3)

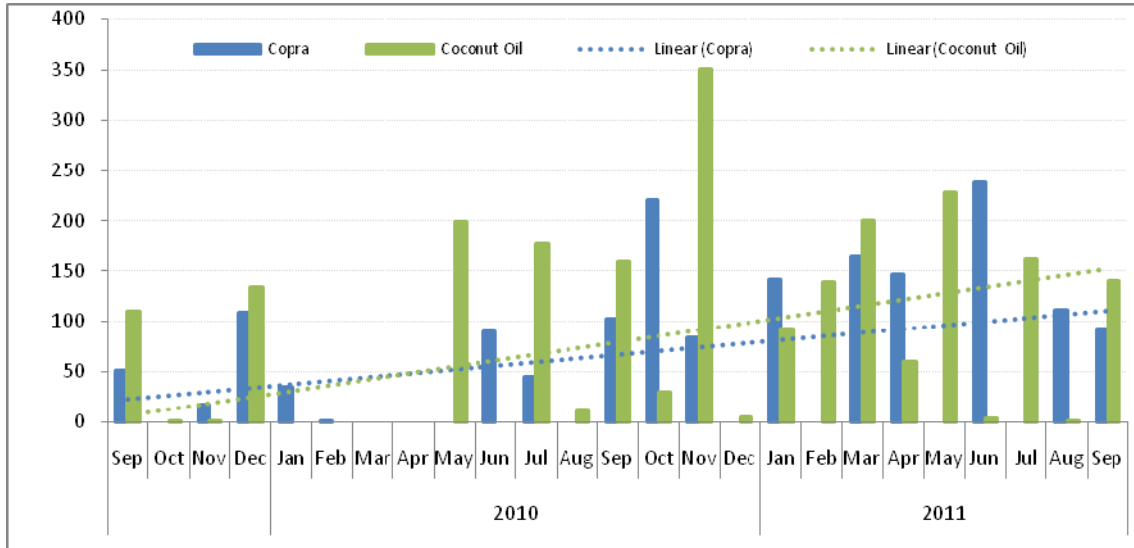


Figure 3: Exports of Coconut Products (million vatu)

In September 2011, copra exports fell from 103 million vatu to 93 million vatu over the same period of the previous year. Coconut oil exports also recorded a decrease from 159 million vatu to 140 million vatu as well as alcoholic drinks which fell dramatically in value from 60 million vatu to 18 million vatu over September 2010. There are other domestic exports which increased in value: vanilla 68%, Fish 59% and cowhides 0.2% when compared to August 2010.

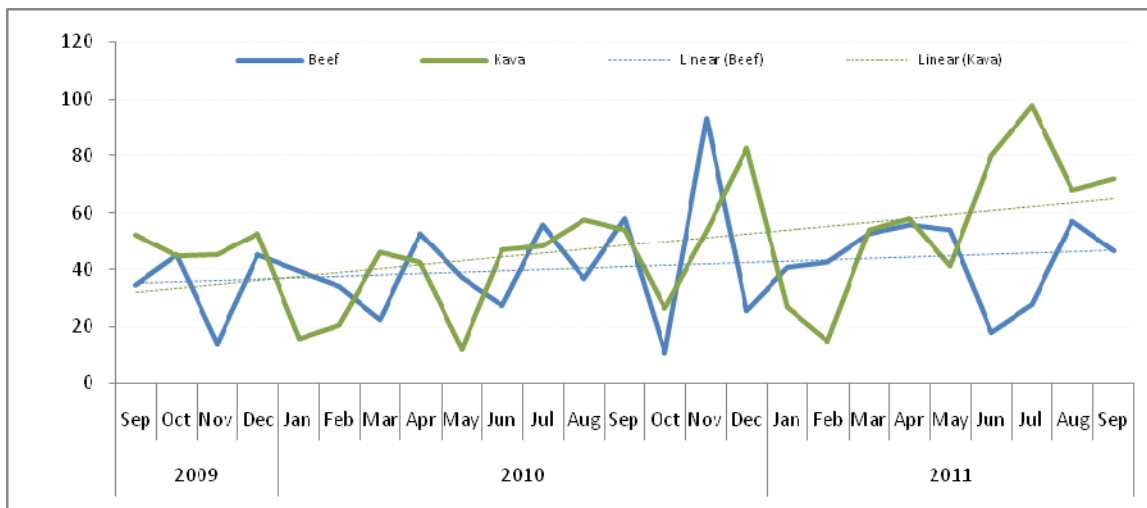


Figure 4: Exports of kava and beef Products (million vatu)

Exports of beef decreased by 20% in value from 58 million vatu in September 2010 to 47 million vatu in September 2011. However, Kava exports increased by 33% in value from 54 million vatu to 72 million vatu over September 2010.

IMPORTS

In terms of imports by commodity groups, Food and Live Animals registered the largest value (C.I.F) of 497 million vatu or 25 % of the total imports for home consumption, followed by Machines and transport equipment 22%, miscellaneous goods 15%, basic manufactured goods and chemical products contributing to 14% each. Other commodities such as beverages and tobacco, crude oil, oils and fats, and goods not classified elsewhere made up less than 10% of the total imports for home consumption.

In September 2011, Goods not classified and Miscellaneous contributed to an increase of 33% and 12% respectively. However, the remaining commodities all recorded decreases when compared to the previous quarter of 2010. Commodities such as mineral fuels (-90%), crude materials (-45%), beverages and tobacco (-28%), Basic manufactured goods (-27%), Oils and fats (-22%), food and live animals (-15%) while the rest of the imported items decreased by less than 10%.

REVISIONS TO IMPORTS AND EXPORTS STATISTICS

The Vanuatu National Statistics Office receives import and export statistics data on quantity and value from the Department of Customs and Inland Revenue's ASYCUDA merchandise trade processing system. On occasion revisions are made to import and export entries after publication. The Vanuatu National Statistics Office makes every possible effort to check the data and resolve inconsistencies and anomalies with colleagues from the Department of Customs and Inland Revenue prior to publishing. Where revisions are necessary these are highlighted in the statistical tables.

CONCEPTS AND DEFINITIONS:

- **Imports for Home Consumption** are goods, materials or articles purchased in other countries and brought into Vanuatu and cleared through customs procedures for home consumption. Imports for home consumption are valued on a C.I.F. (cost, insurance, freight) basis. This means that for each commodity, the value recorded includes the factory price, the cost of packaging, the freight cost from overseas to Vanuatu ports and the insurance.
- **Exports** are expressed in F.O.B. (free on board) prices. It means the total value includes the production cost and the transport cost to the Vanuatu port of export.
- **Imports for re-export** refers to imports destined to be re-exported without having undergone any transformation, or only minor ones. This is especially the case of duty free goods and fuel "imported" into the country and sold to non-resident airline operators or ships.
- **Re-exports** are goods, materials or articles exported in the same condition as they were imported, and imported goods, which have undergone operations such as repair, repacking, or bottling which leave them essentially unchanged before exporting.

ATTACHED:

- Table 1: Summary of overseas trade
- Table 2: Principal domestic exports, value
- Table 3: Principal domestic exports, quantity
- Table 4: Imports cleared for home consumption, value

NEXT UPDATE (MONTHLY)

RELEASE DATE

September

12th November 2011

MORE INFORMATION

For statistical enquiries about this topic, please contact:

National Statistics Office: (678) 22110/22111 – email: stats@vanuatu.gov.vu

NATIONAL STATISTICS OFFICES IN THE PROVINCES

Torba Province: (678) 5522320

Sanma Province: (678) 36542/5522316

Penama Province: (678) 5522318

Malampa Province: (678) 5522317

Tafea Province: (678) 5522319



Simil Johnson
Government Statistician



Table 1 Summary of Overseas Trade
Tableau 1 Récapitulatif du commerce extérieur

In Million Vatu
En millions de Vatu

Year / Quarter	EXPORTS F.O.B / EXPORTATION FAB					IMPORTS C.I.F / IMPORTATIONS CAF							Année	Trimestre
	Domestic Exports Exportation de produits locaux			Re-exports	Total Exports	Imports for Home Consumption / Importations destinées à la Consommation intérieure			Imports for Re- exports	Total Imports	Trade Balance	Balance Ratio		
	Luganville	Port Vila	Total	Ré- exportations	Total des Exportations (E)	Luganville	Port Vila	Total	Importations pour ré- exportations	Total des Importations (I)	Déficit Commercial (E)-(I)	Taux de Couverture (E)/(I)		
2008	3,166	1,793	4,958	762	5,721	4,834	26,635	31,469	198	31,667	(25,946)	0.2	2008	
2009	1,935	2,104	4,039	2,031	6,070	3,641	25,750	29,391	1,694	31,086	(25,016)	0.2	2009	
2010	2,625	1,855	4,481	214	4,695	3,904	23,486	27,391	119	27,510	(22,815)	0.2	2010	
2010 1st	170	407	578	121	698	692	5,176	5,868	22	5,890	(5,191)	0.1	2010	1er
2nd	604	450	1,055	35	1,090	830	5,258	6,087	38	6,125	(5,035)	0.2		2ème
3rd	871	531	1,402	58	1,460	1,213	6,652	7,865	30	7,895	(6,436)	0.2		3ème
4th	980	467	1,447	-	1,447	1,170	6,401	7,570	30	7,600	(6,153)	0.2		4ème
2011 1st	897	498	1,396	-	1,396	1,038	5,185	6,223	54	6,278	(4,882)	0.2	2011	1er
2nd	1,038	547	1,585	-	1,585	1,034	5,005	6,039	13	6,052	(4,467)	0.3		2ème
3rd	823	712	1,534	-	1,534	901	6,337	7,239	29	7,267	(5,733)	0.2		3ème
2010 Jan	74	150	224	17	241	301	1,534	1,835	17	1,852	(1,611)	0.1	2010	Jan
Feb	52	116	167	43	211	180	1,577	1,758	3	1,761	(1,550)	0.1		Fév
Mar	45	142	186	60	246	210	2,065	2,275	1	2,276	(2,030)	0.1		Mars
Apr	86	162	248	35	283	487	2,036	2,523	27	2,550	(2,267)	0.1		Avril
May	262	92	354	-	354	206	1,210	1,416	5	1,421	(1,066)	0.2		Mai
Jun	256	196	452	-	452	136	2,011	2,148	6	2,154	(1,702)	0.2		Juin
Jul	329	190	519	-	519	372	2,555	2,927	3	2,930	(2,411)	0.2		Juil
Aug	150	159	308	-	308	443	1,863	2,305	23	2,328	(2,020)	0.1		Août
Sep	393	182	574	58	633	398	2,235	2,633	4	2,637	(2,005)	0.2		Sep
Oct	251	150	401	-	401	219	1,843	2,062	26	2,088	(1,686)	0.2		Oct
Nov	611	126	737	-	737	671	2,166	2,836	2	2,838	(2,101)	0.3		Nov
Dec	118	191	309	-	309	280	2,392	2,672	2	2,674	(2,366)	0.1		Déc
2011 Jan	281	221	502	-	502	266	1,193	1,459	4	1,463	(961)	0.3	2011	Jan
Feb	182	110	292	-	292	225	2,297	2,522	31	2,553	(2,261)	0.1		Feb
Mar	434	167	601	-	601	547	1,695	2,242	20	2,261	(1,660)	0.3		Mars
Apr	303	210	513	-	513	180	1,850	2,030	1	2,031	(1,517)	0.3		Avril
May	339	220	559	-	559	183	1,650	1,833	6	1,839	(1,280)	0.3		Mai
Jun	395	117	512	-	512	671	1,505	2,176	6	2,182	(1,670)	0.2		Juin
July	304	176	480	-	480	277	2,321	2,597	2	2,600	(2,119)	0.2		Juillet
Aug	207	322	528	-	528	284	2,402	2,687	10	2,697	(2,169)	0.2		Août
Sep	312	214	526	-	526	340	1,614	1,955	16	1,971	(1,445)	0.3		Sept

Source: Department of Customs and Inland Revenue / Service des Douanes et Contributions Indirectes

Table 2 Principal Domestic Exports, in Value
Tableau 2 Principales exportations de produits locaux, en valeur

In million Vatu
En millions de Vatu

Year Quarter	Copra	Coconut oil	Beef veal	Cocoa	Shell	Sawn Timber	Cowhides	Kava	Coffee	Vanilla	Coconut Meal	Root crops	Live Fish	Alcoholic Drink	Fish	Other products	Total	Année Trimestre
	Coprah	Huile de coco	Viande bovine	Cacao	Coquillages	Bois débité	Cuir et peaux		Café	Vanille	Farine de coprah	Récolte de racines	Poisson vivant	Boissons Alcoolisées	Poisson	Autres produits		
2008	1,194	828	475	251	76	167	44	616	2	7	0	10	75	229	2	981	4,958	2008
2009	569	275	399	343	71	45	11	616	3	5	0	0	146	202	148	1,205	4,039	2009
2010	579	933	494	383	31	26	14	508	3	5	54	0	324	208	103	815	4,480	2010
2010 1st	36	-	96	15	-	14	3	83	1	2	-	0	98	10	29	191	577	2010 1er
2nd	91	199	117	187	20	6	4	102	0	1	14	-	45	79	22	170	1,055	2ème
3rd	148	349	151	100	11	5	5	160	0	1	24	-	94	74	19	261	1,402	3ème
4th	304	386	130	82	1	1	3	163	1	1	16	-	86	45	33	194	1,447	4ème
2011 1st	306	432	136	6	9	3	8	95	1	1	14	0	46	40	188	110	1,395	2011 1er
2nd	385	292	128	104	1	31	8	179	7	2	33	-	49	50	99	217	1,585	2ème
3rd	205	302	132	88	9	0	6	238	0	2	26	1	40	44	54	385	1,534	3ème
2010 Jan	35	-	39	7	-	-	1	16	-	0	-	-	7	-	28	89	224	2010 Jan
Feb	0	-	34	8	-	7	1	21	-	1	-	-	62	-	0	32	167	Fév
Mar	-	-	22	0	-	7	-	46	1	-	-	0	29	10	0	69	186	Mars
Apr	-	-	53	3	-	4	2	43	-	1	0	-	12	53	8	70	248	Avril
May	-	199	37	9	20	1	-	12	0	-	13	-	8	17	3	34	354	Mai
Jun	91	-	27	174	-	-	2	47	-	1	0	-	25	9	11	66	452	Juin
Jul	45	178	56	25	-	-	2	48	0	-	13	-	32	11	5	104	519	Juil
Aug	-	11	37	42	11	4	1	58	0	1	11	-	41	3	5	83	308	Août
Sep	103	159	58	33	-	1	2	54	0	0	-	-	21	60	9	74	574	Sep
Oct	220	30	11	2	-	0	2	27	-	0	11	-	33	9	13	43	401	Oct
Nov	84	351	94	47	-	0	2	54	0	1	6	-	28	20	17	35	737	Nov
Dec	-	5	26	34	1	0	-	83	1	0	-	-	25	17	3	115	309	Déc
2011 Jan	141	92	41	3	9	0	2	27	0	1	3	-	16	2	143	21	502	2011 Jan
Feb	-	140	42	3	-	-	4	15	-	-	11	0	14	12	12	39	292	Fév
Mar	165	201	53	-	-	3	2	54	0	0	-	-	16	25	33	49	601	Mars
Apr	147	60	56	4	1	30	2	58	7	1	7	-	16	8	24	93	513	Avril
May	-	228	54	37	-	1	2	41	0	-	17	-	21	33	41	83	559	Mai
June	239	4	18	63	-	0	4	80	-	1	9	-	12	9	35	40	513	Juin
July	-	161	28	73	-	0	2	98	-	1	7	1	9	17	15	69	480	Juillet
Aug	112	1	57	6	-	-	2	68	0	1	3	0	18	9	25	223	528	Août
Sep	93	140	47	9	9	-	2	72	-	1	16	-	13	18	14	93 #	526	Sept

Source: Department of Customs and Inland Revenue / Service des Douanes et Contributions Indirectes (r) revised other products data

Table 3 Principal Domestic Exports, in Quantity
Tableau 3 Principales exportations, en quantité

In tonnes
En tonnes

Year / Quarter	Copra	Coconut oil	Beef veal	Cocoa	Shell	Cowhides	Kava	Coffee	Vanilla	Coconut Meal	Root crops	Live Cattle	Live Fish	Fish	
	Coprah	Huile de coco	Viande bovine	Cacao	Coquillages	Cuirs et peaux		Café	Vanille	Farine de coprah	Récolte de racines	Bétail vivant	Poisson vivant	Poisson	Année Trimestre
2008	21,380	16,545	1,023	1,132	31	327	437	2	2	5	78	0	108	3	2008
2009	15,107	5,385	903	1,480	19	267	476	3	1	12	2	0	99	456	2009
2010	12,133	10,325	1,123	1,525	10	226	498	4	1	5,232	0	0	238	381	2010
2010 1st	1,067	-	214	60	-	50	69	1	0	-	0	0	47	78	2010 1er
2nd	2,042	2,579	279	651	6	53	115	0	0	1,337	-	-	46	191	2ème
3rd	3,419	3,943	341	438	3	81	154	1	0	2,258	-	-	38	42	3ème
4th	5,605	3,803	289	375	0	42	160	2	0	1,638	-	-	107	70	4ème
2011 1st	3,768	3,461	300	25	3	102	90	1	0	1,172	0	-	102	1,973	2011 1er
2nd	4,526	1,956	270	469	0	88	178	11	0	2,534	-	-	41	452	2ème
3rd	3,033	2,299	290	392	3	64	221	0	1	2,137	4	-	40	265	3ème
2010 Jan	1,057	-	92	25	-	25	12	-	0	-	-	-	5	71	2010 Jan
Feb	10	-	72	33	-	25	20	-	0	-	-	-	33	2	Fév
Mar	-	-	50	2	-	-	36	1	-	-	0	-	10	5	Mars
Apr	-	-	125	13	-	26	41	-	0	10	-	-	5	23	Avril
May	-	2,579	95	38	6	-	14	0	-	1,274	-	-	6	6	Mai
Jun	2,042	-	58	600	-	26	60	-	0	53	-	-	35	162	Juin
Jul	1,006	2,087	126	137	-	37	46	0	-	1,162	-	-	22	9	Juil
Aug	-	125	83	162	3	23	57	0	0	1,095	-	-	9	9	Août
Sep	2,412	1,731	132	139	-	21	50	0	0	-	-	-	7	24	Sep
Oct	4,305	440	20	8	-	21	25	-	0	1,084	-	-	22	35	Oct
Nov	1,300	2,955	219	215	-	21	54	1	0	554	-	0	44	27	Nov
Dec	-	408	51	153	0	-	80	1	0	-	-	-	41	8	Déc
2011 Jan	2,000	749	92	13	3	21	26	0	0	346	-	-	41	1,645	2011 Jan
Feb	-	1,098	96	13	-	59	15	-	-	826	0	-	17	35	Fév
Mar	1,768	1,613	111	-	-	22	49	1	0	-	-	-	45	293	Mars
Apr	1,681	330	112	27	0	23	49	11	0	493	-	-	17	70	Avril
May	-	1,604	113	167	-	23	35	0	-	1,359	-	-	11	187	Mai
Jun	2,845	23	46	276	-	43	94	-	0	682	-	-	13	195	Juin
July	-	975	69	329	-	23	85	-	0	522	2	-	13	68	Juillet
Aug	1,461	6	120	25	-	22	63	0	0	308	2	-	18	154	Août
Sep	1,571	1,318	101	38	3	20	72	-	0	1,307	-	9	137	421	Sept

Source: Department of Customs and Inland Revenue / Service des Douanes et Contributions Indirectes