

## STATISTICS UPDATE: OVERSEAS TRADE

### JULY 2011 HIGHLIGHTS

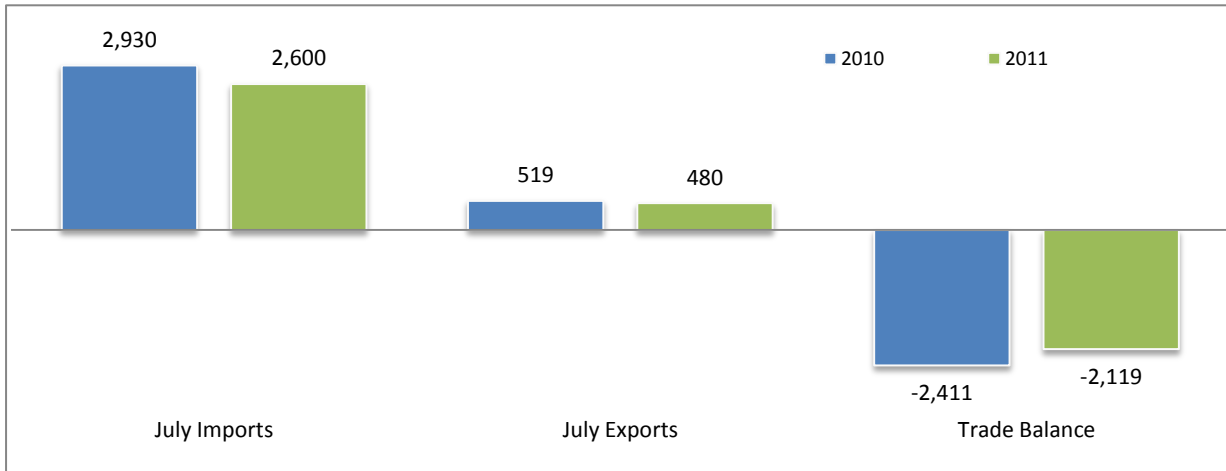


Figure 1: Terms of trade, July 2010 and July 2011

According to July 2011, trade statistics recorded a trade deficit of 2,119 million vatu indicating an improvement of 292 million vatu compared to July 2010.

The improvement was mostly decreased imports by 12% over the same corresponding period in 2010.

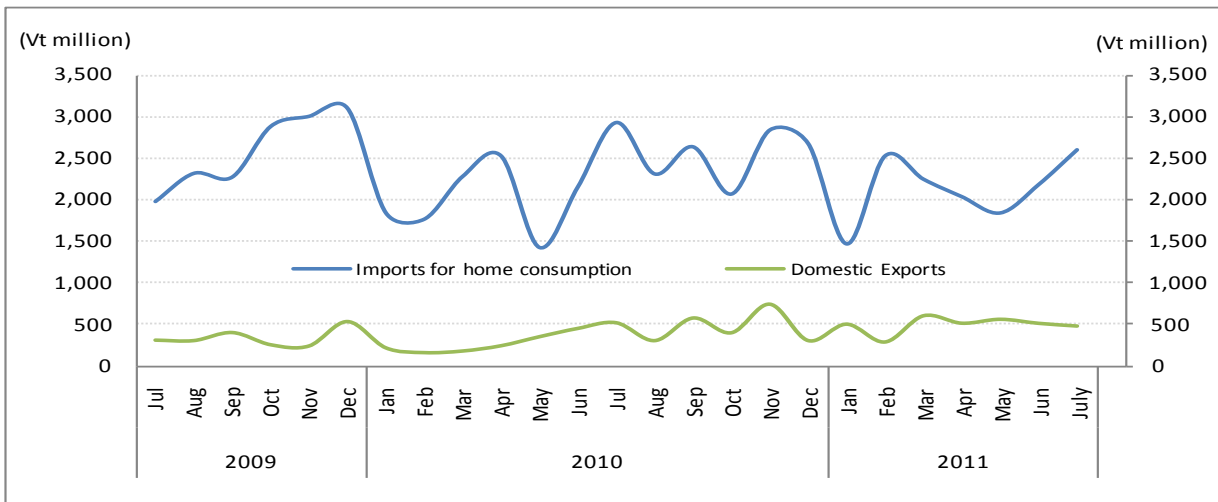


Figure 2: Overseas trade exports and imports (million vatu)

EXPORTS

In July 2011, Coconut oil constituted 34% of the total domestic exports in vatu terms, followed by kava 20%, cocoa 15%, beef 6%, alcoholic drinks 4%, fish 3%, life fish 2% and coconut meal 1%.. Other includes products such as: Tamanu oil, dried sharkfins, black bean seeds and scrap metal iron.

(See attached Table 2, Table 3)

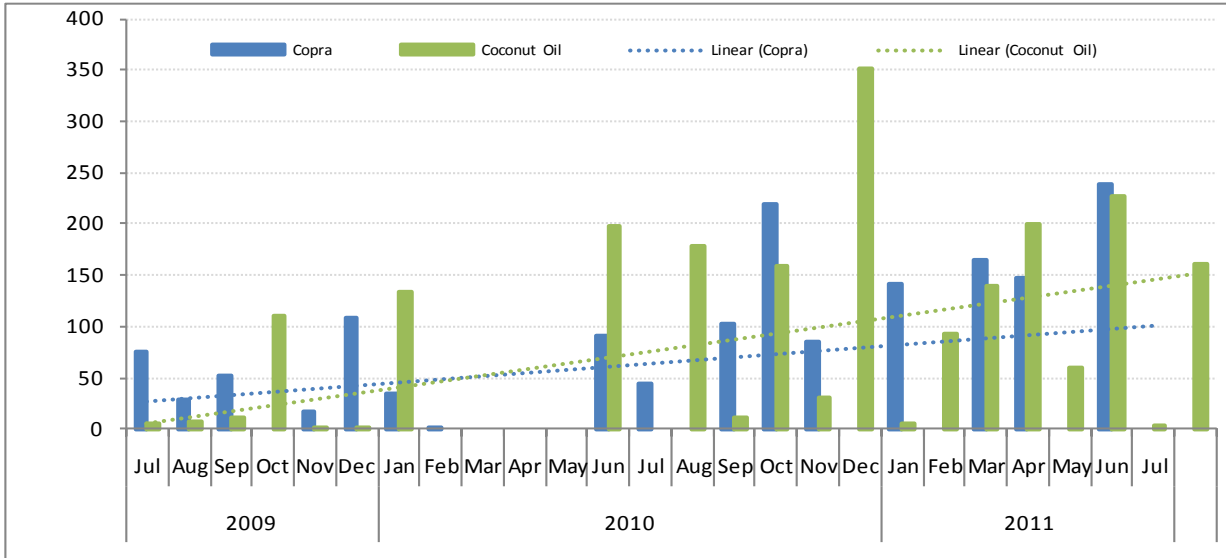


Figure 3: Exports of Coconut Products (million vatu)

In July 2011, there were no recorded copra exports but there were coconut oil exports which decreased by 10% over July 2010 from 178 million vatu to 161 million vatu. There are other domestic exports which increased in value: cocoa 192%, fish 200% and alcoholic drinks 55% compared to July 2010.

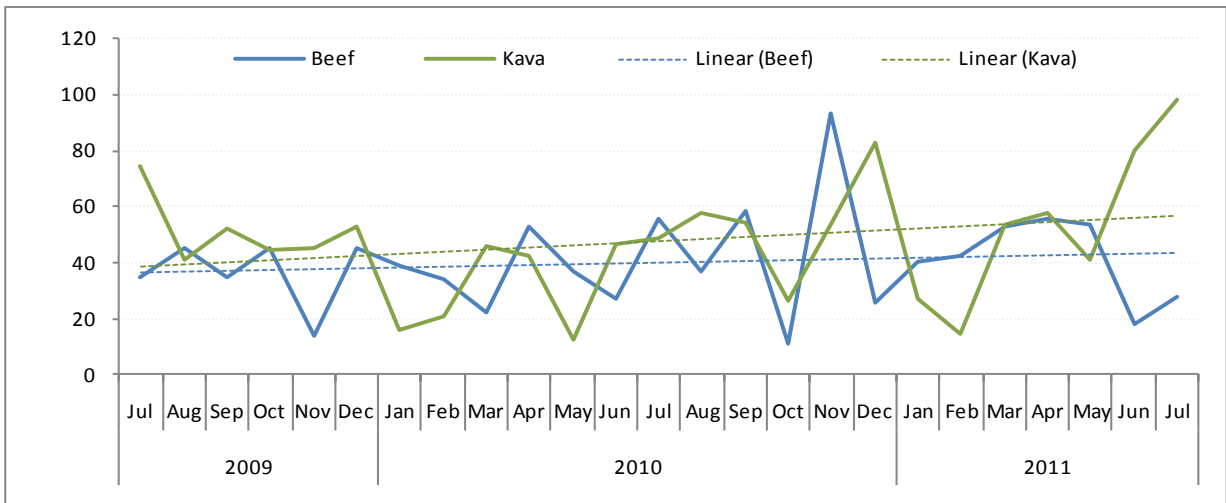


Figure 4: Exports of kava and beef Products (million vatu)

Exports of kava doubled in value from 48 million vatu in July 2010 to 98 million vatu in July 2011. However beef exports decreased by 51% from 56 million vatu to 28 million vatu over July 2010.

## IMPORTS

In terms of imports by commodity groups, imports for mineral fuels registered the largest value (C.I.F) of 575 million vatu or 22 % of the total imports for home consumption, followed by machines and transport equipment a long side food and live animals 19%, basic manufactured goods 12%, miscellaneous goods 11% and chemical products 9%. Other commodities such as beverages and tobacco, crude oil, oils and fats, and goods not classified elsewhere made up less than 10% of the total imports for home consumption.

In July 2011, significant increases were recorded for commodities such as beverages and Tobacco with 103%, followed by oils and fats 43%, mineral fuels 42%, and crude materials 30%, while the rest of the imported items decreased: machines and transport (- 43%), basic manufactured goods (- 27%), goods not classified elsewhere (-71%), chemical products (-17%) and food and live animals (- 5%) over July 2010.

## REVISIONS TO IMPORTS AND EXPORTS STATISTICS

The Vanuatu National Statistics Office receives import and export statistics data on quantity and value from the Department of Customs and Inland Revenue's ASYCUDA merchandise trade processing system. On occasion revisions are made to import and export entries after publication. The Vanuatu National Statistics Office makes every possible effort to check the data and resolve inconsistencies and anomalies with colleagues from the Department of Customs and Inland Revenue prior to publishing. Where revisions are necessary these are highlighted in the statistical tables.

## CONCEPTS AND DEFINITIONS:

- **Imports for Home Consumption** are goods, materials or articles purchased in other countries and brought into Vanuatu and cleared through customs procedures for home consumption. Imports for home consumption are valued on a C.I.F. (cost, insurance, freight) basis. This means that for each commodity, the value recorded includes the factory price, the cost of packaging, the freight cost from overseas to Vanuatu ports and the insurance.
- **Exports** are expressed in F.O.B. (free on board) prices. It means the total value includes the production cost and the transport cost to the Vanuatu port of export.
- **Imports for re-export** refers to imports destined to be re-exported without having undergone any transformation, or only minor ones. This is especially the case of duty free goods and fuel "imported" into the country and sold to non-resident airline operators or ships.
- **Re-exports** are goods, materials or articles exported in the same condition as they were imported, and imported goods, which have undergone operations such as repair, repacking, or bottling which leave them essentially unchanged before exporting.

**ATTACHED:**

- Table 1: Summary of overseas trade
- Table 2: Principal domestic exports, value
- Table 3: Principal domestic exports, quantity
- Table 4: Imports cleared for home consumption, value

**NEXT UPDATE (MONTHLY)**

**RELEASE DATE**

August

15<sup>th</sup> October, 2011

**MORE INFORMATION**

For statistical enquiries about this topic, please contact:

National Statistics Office: (678) 22110/22111 – email: [stats@vanuatu.gov.vu](mailto:stats@vanuatu.gov.vu)

**NATIONAL STATISTICS OFFICES IN THE PROVINCES**

Torba Province: (678) 5522320

Sanma Province: (678) 36542/5522316

Penama Province: (678) 5522318

Malampa Province: (678) 5522317

Tafea Province: (678) 5522319



**Simil Johnson**  
Government Statistician



**Table 1 Summary of Overseas Trade**  
**Tableau 1 Récapitulatif du commerce extérieur**

**In Million Vatu**  
**En millions de Vatu**

Year / Quarter	EXPORTS F.O.B / EXPORTATION FAB					IMPORTS C.I.F / IMPORTATIONS CAF							Année	Trimestre
	Domestic Exports Exportation de produits locaux			Re-exports	Total Exports	Imports for Home Consumption / Importations destinées à la Consommation intérieure			Imports for Re- exports	Total Imports	Trade Balance	Balance Ratio		
	Luganville	Port Vila	Total	Ré- exportations	Total des Exportations (E)	Luganville	Port Vila	Total	Importations pour ré- exportations	Total des Importations (I)	Déficit Commercial (E)-(I)	Taux de Couverture (E)/(I)		
2008	3,166	1,793	4,958	762	5,721	4,834	26,635	31,469	198	31,667	(25,946)	0.2	2008	
2009	1,935	2,104	4,039	2,031	6,070	3,641	25,750	29,391	1,694	31,086	(25,016)	0.2	2009	
2010	2,625	1,855	4,480	214	4,694	3,904	23,486	27,391	119	27,510	(22,815)	0.2	2010	
2009 1st	432	650	1,082	1,101	2,183	786	6,152	6,938	7	6,945	(4,762)	0.3	2009 1er	
2nd	370	522	892	219	1,111	862	6,059	6,920	1,413	8,333	(7,222)	0.1	2ème	
3rd	621	406	1,026	233	1,260	980	5,571	6,552	213	6,765	(5,505)	0.2	3ème	
4th	513	526	1,038	478	1,516	1,014	7,968	8,981	61	9,043	(7,526)	0.2	4ème	
2010 1st	170	407	577	121	698	692	5,176	5,868	22	5,890	(5,192)	0.1	2010 1er	
2nd	604	450	1,055	35	1,090	830	5,258	6,087	38	6,125	(5,035)	0.2	2ème	
3rd	871	531	1,402	58	1,460	1,213	6,652	7,865	30	7,895	(6,436)	0.2	3ème	
4th	980	467	1,447	-	1,447	1,170	6,401	7,570	30	7,600	(6,153)	0.2	4ème	
2011 1st	897	498	1,396	-	1,396	1,038	5,185	6,223	54	6,278	(4,882)	0.2	2011 1er	
2nd	1,038	547	1,585	-	1,585	1,034	5,005	6,039	13	6,052	(4,467)	0.3	2ème	
2010 Jan	74	150	223	17	241	301	1,534	1,835	17	1,852	(1,612)	0.1	2010 Jan	
Feb	52	116	167	43	211	180	1,577	1,758	3	1,761	(1,550)	0.1	Fév	
Mar	45	142	186	60	246	210	2,065	2,275	1	2,276	(2,030)	0.1	Mars	
Apr	86	162	248	35	283	487	2,036	2,523	27	2,550	(2,267)	0.1	Avril	
May	262	92	354	-	354	206	1,210	1,416	5	1,421	(1,066)	0.2	Mai	
Jun	256	196	452	-	452	136	2,011	2,148	6	2,154	(1,702)	0.2	Juin	
Jul	329	190	519	-	519	372	2,555	2,927	3	2,930	(2,411)	0.2	Juil	
Aug	150	159	308	-	308	443	1,863	2,305	23	2,328	(2,020)	0.1	Août	
Sep	393	182	574	58	633	398	2,235	2,633	4	2,637	(2,005)	0.2	Sep	
Oct	251	150	401	-	401	219	1,843	2,062	26	2,088	(1,686)	0.2	Oct	
Nov	611	126	737	-	737	671	2,166	2,836	2	2,838	(2,101)	0.3	Nov	
Dec	118	191	309	-	309	280	2,392	2,672	2	2,674	(2,366)	0.1	Déc	
2011 Jan	281	221	502	-	502	266	1,193	1,459	4	1,463	(961)	0.3	2011 Jan	
Feb	182	110	292	-	292	225	2,297	2,522	31	2,553	(2,261)	0.1	Feb	
Mar	434	167	601	-	601	547	1,695	2,242	20	2,261	(1,660)	0.3	Mars	
Apr	303	210	513	-	513	180	1,850	2,030	1	2,031	(1,517)	0.3	Avril	
May	339	220	559	-	559	183	1,650	1,833	6	1,839	(1,280)	0.3	Mai	
Jun	395	117	512	-	512	671	1,505	2,176	6	2,182	(1,670)	0.2	Juin	
July	304	176	480	-	480	277	2,321	2,597	2	2,600	(2,119)	0.2	Juillet	

Source: Department of Customs and Inland Revenue / Service des Douanes et Contributions Indirectes

Table 2 Principal Domestic Exports, in Value																	In million Vatu	
Tableau 2 Principales exportations de produits locaux, en valeur																	En millions de Vatu	
Year Quarter	Copra	Coconut oil	Beef veal	Cocoa	Shell	Sawn Timber	Cowhides	Kava	Coffee	Vanilla	Coconut Meal	Root crops	Live Fish	Alcoholic Drink	Fish	Other products	Total	Année Trimestre
	Coprah	Huile de coco	Viande bovine	Cacao	Coquillages	Bois débité	Cuir et peaux		Café	Vanille	Farine de coprah	Récolte de racines	Poisson vivant	Boissons Alcoolisées	Poisson	Autres produits		
2008	1,194	828	475	251	76	167	44	616	2	7	0	10	75	229	2	981	4,958	2008
2009	569	275	399	343	71	45	11	616	3	5	0	0	146	202	200	1,153	4,037	2009
2010	579	933	494	383	31	26	14	508	3	5	54	0	324	208	103	815	4,480	2010
2010 1st	36	-	96	15	-	14	3	83	1	2	-	0	98	10	29	191	577	2010 1er
2nd	91	199	117	187	20	6	4	102	0	1	14	-	45	79	22	170	1,055	2ème
3rd	148	349	151	100	11	5	5	160	0	1	24	-	94	74	19	261	1,402	3ème
4th	304	386	130	82	1	1	3	163	1	1	16	-	86	45	33	194	1,447	4ème
2011 1st	306	432	136	6	9	3	8	95	1	1	14	0	46	40	188	110	1,395	2011 1er
2nd	385	292	128	104	1	31	8	179	7	2	33	-	49	50	99	217	1,585	2ème
2010 Jan	35	-	39	7	-	-	1	16	-	0	-	-	7	-	28	89	224	2010 Jan
Feb	0	-	34	8	-	7	1	21	-	1	-	-	62	-	0	32	167	Fév
Mar	-	-	22	0	-	7	-	46	1	-	-	0	29	10	0	69	186	Mars
Apr	-	-	53	3	-	4	2	43	-	1	0	-	12	53	8	70 r	248	Avril
May	-	199	37	9	20	1	-	12	0	-	13	-	8	17	3	34 r	354	Mai
Jun	91	-	27	174	-	-	2	47	-	1	0	-	25	9	11	66 r	452	Juin
Jul	45	178	56	25	-	-	2	48	0	-	13	-	32	11	5	104 r	519	Juil
Aug	-	11	37	42	11	4	1	58	0	1	11	-	41	3	5	83 r	308	Août
Sep	103	159	58	33	-	1	2	54	0	0	-	-	21	60	9	74 r	574	Sep
Oct	220	30	11	2	-	0	2	27	-	0	11	-	33	9	13	43	401	Oct
Nov	84	351	94	47	-	0	2	54	0	1	6	-	28	20	17	35	737	Nov
Dec	-	5	26	34	1	0	-	83	1	0	-	-	25	17	3	115	309	Déc
2011 Jan	141	92	41	3	9	0	2	27	0	1	3	-	16	2	143	21	502	2011 Jan
Feb	-	140	42	3	-	-	4	15	-	-	11	0	14	12	12	39	292	Fév
Mar	165	201	53	-	-	3	2	54	0	0	-	-	16	25	33	49	601	Mars
Apr	147	60	56	4	1	30	2	58	7	1	7	-	16	8	24	93	513	Avril
May	-	228	54	37	-	1	2	41	0	-	17	-	21	33	41	83	559	Mai
June	239	4	18	63	-	0	4	80	-	1	9	-	12	9	35	40	513	Juin
July	-	161	28	73	-	0	2	98	-	1	7	1	9	17	15	69	480	Juillet

Source: Department of Customs and Inland Revenue / Service des Douanes et Contributions Indirectes (r) revised other products data

**Table 3 Principal Domestic Exports, in Quantity**  
**Tableau 3 Principales exportations, en quantité**

**In tonnes**  
**En tonnes**

Year / Quarter	Copra	Coconut oil	Beef veal	Cocoa	Shell	Cowhides	Kava	Coffee	Vanilla	Coconut Meal	Root crops	Live Cattle	Live Fish	Fish	Année Trimestre
	Coprah	Huile de coco	Viande bovine	Cacao	Coquillages	Cuir et peaux		Café	Vanille	Farine de coprah	Récolte de racines	Bétail vivant	Poisson vivant	Poisson	
2008	21,380	16,545	1,023	1,132	31	327	437	2	2	5	78	0	108	3	2008
2009	15,107	5,385	903	1,480	19	267	476	3	1	12	2	0	99	456	2009
2010	12,133	10,325	1,123	1,525	10	226	498	4	1	5,232	0	0	238	381	2010
2009 1st	4,304	70	227	94	7	43	96	2	0	-	-	0	30	1	2009 1er
2nd	1,814	119	167	575	6	73	119	0	0	-	-	-	26	300	2ème
3rd	5,014	2,910	260	553	4	34	136	0	0	-	2	-	28	59	3ème
4th	3,975	2,286	249	258	2	116	125	0	0	12	-	-	15	96	4ème
2010 1st	1,067	-	214	60	-	50	69	1	0	-	0	0	47	78	2010 1er
2nd	2,042	2,579	279	651	6	53	115	0	0	1,337	-	-	46	191	2ème
3rd	3,419	3,943	341	438	3	81	154	1	0	2,258	-	-	38	42	3ème
4th	5,605	3,803	289	375	0	42	160	2	0	1,638	-	-	107	70	4ème
2011 1st	3,768	3,461	300	25	3	102	90	1	0	1,172	0	-	102	1,973	2011 1er
2nd	4,526	1,956	270	469	0	88	178	11	0	2,534	-	-	41	452	2ème
2010 Jan	1,057	-	92	25	-	25	12	-	0	-	-	-	5	71	2010 Jan
Feb	10	-	72	33	-	25	20	-	0	-	-	-	33	2	Fév
Mar	-	-	50	2	-	-	36	1	-	-	0	-	10	5	Mars
Apr	-	-	125	13	-	26	41	-	0	10	-	-	5	23	Avril
May	-	2,579	95	38	6	-	14	0	-	1,274	-	-	6	6	Mai
Jun	2,042	-	58	600	-	26	60	-	0	53	-	-	35	162	Juin
Jul	1,006	2,087	126	137	-	37	46	0	-	1,162	-	-	22	9	Juil
Aug	-	125	83	162	3	23	57	0	0	1,095	-	-	9	9	Août
Sep	2,412	1,731	132	139	-	21	50	0	0	-	-	-	7	24	Sep
Oct	4,305	440	20	8	-	21	25	-	0	1,084	-	-	22	35	Oct
Nov	1,300	2,955	219	215	-	21	54	1	0	554	-	0	44	27	Nov
Dec	-	408	51	153	0	-	80	1	0	-	-	-	41	8	Déc
2011 Jan	2,000	749	92	13	3	21	26	0	0	346	-	-	41	1,645	2011 Jan
Feb	-	1,098	96	13	-	59	15	-	-	826	0	-	17	35	Fév
Mar	1,768	1,613	111	-	-	22	49	1	0	-	-	-	45	293	Mars
Apr	1,681	330	112	27	0	23	49	11	0	493	-	-	17	70	Avril
May	-	1,604	113	167	-	23	35	0	-	1,359	-	-	11	187	Mai
Jun	2,845	23	46	276	-	43	94	-	0	682	-	-	13	195	Juin
July	-	975	69	329	-	23	85	-	0	522	2	-	13	68	Juillet

Source: Department of Customs and Inland Revenue / Service des Douanes et Contributions Indirectes

**Table 4 Imports Cleared for Home Consumption, in Value**  
**Tableau 4 Importations destinées à la consommation intérieure par produit selon la Classification Type pour le Commerce International, en valeur**

**In million Vatu**  
**En million de Vatu**

Year	Quarter	Food & Live Animals	Beverages & Tobacco	Crude Materials Except Fuels	Mineral Fuels	Oils, Fats & Waxes	Chemical Products	Basic Manufactured Products	Machines & Transport Equipment	Miscellaneous Manufactured Goods	Goods N.E.C.	Total	Année	Trimestre
		Produits alimentaires et animaux vivants	Boissons et tabacs	Matières brutes non combustibles	Energie fossile	Huiles et graisses animales et végétales	Produits chimiques	Produits manufacturés	Machines et matériels de transports	Produits manufacturés divers	Articles et transactions, N.C.A			
2008		4,785	844	427	5,043	168	2,751	4,347	9,731	2,756	617	31,468	2008	
2009		4,840	1,016	319	3,755	107	3,310	4,284	7,814	3,165	781	29,391	2009	
2010		5,108	1,023	419	3,618	133	2,923	3,817	7,252	2,735	361	27,390	2010	
2009	1st	997	215	52	683	31	754	828	2,508	807	62	6,937	2009	1er
	2nd	1,239	236	85	885	16	719	1,086	1,687	766	201	6,920		2ème
	3rd	1,221	248	102	696	20	973	966	1,579	652	94	6,552		3ème
	4th	1,383	317	80	1,490	40	864	1,403	2,040	940	424	8,981		4ème
2010	1st	1,028	233	91	562	25	661	845	1,889	469	66	5,868	2010	1er
	2nd	950	170	93	1,205	32	680	808	1,543	522	84	6,087		2ème
	3rd	1,516	239	128	1,122	27	765	1,166	2,019	773	111	7,865		3ème
	4th	1,614	381	107	729	50	817	999	1,801	972	100	7,570		4ème
2011	1st	1,042	215	75	1,204	22	653	908	1,481	574	49	6,223	2011	1er
	2nd	1,343	239	74	866	29	729	822	1,134	705	98	6,039		2ème
2010	Jan	363	72	31	70	6	207	281	662	135	8	1,835	2010	Jan
	Feb	320	38	25	346	13	202	197	474	116	27	1,758		Fév
	Mar	345	123	35	146	5	252	367	753	218	30	2,275		Mars
	Apr	353	54	31	838	10	211	267	572	154	33	2,523		Avril
	May	288	62	34	54	11	211	236	382	128	11	1,416		Mai
	Jun	309	54	28	314	10	258	305	589	240	41	2,148		Juin
	Jul	521	72	30	405	7	253	440	873	272	53	2,927		Juil
	Aug	412	70	39	210	3	240	361	696	245	30	2,305		Août
	Sep	583	97	58	507	17	273	364	450	256	28	2,633		Sep
	Oct	346	89	26	127	16	232	294	524	347	61	2,062		Oct
	Nov	677	98	32	285	11	296	416	694	315	10	2,836		Nov
	Dec	591	195	48	316	23	288	289	584	309	30	2,672		Déc
2011	Jan	295	38	17	45	8	177	272	416	178	11	1,459	2011	Jan
	Feb	310	63	23	920	10	241	320	395	220	21	2,522		Fév
	Mar	436	114	35	239	4	235	315	671	176	17	2,242		Mars
	Apr	413	87	21	533	4	230	213	319	194	16	2,030		Avril
	May	431	75	26	31	7	238	286	414	260	64	1,833		Mai
	Jun	500	77	28	301	17	260	323	401	251	18	2,176		Juin
	July	497	146	39	575	10	211	323	496	284	15	2,597		Juillet

Source: Department of Customs and Inland Revenue / Service des Douanes et Contributions Indirectes