

VNSO Update

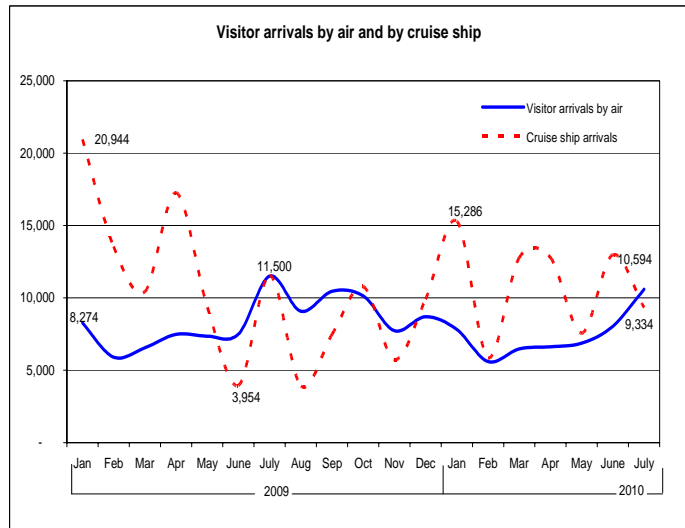
Tourism and Migration, July 2010

July highlights

International visitor arrivals are usually high in the month of July, as many people come for events and sporting activities. The 10,594 visitor arrivals by air in July 2010 was 8% a decrease from that of July 2009; but an increase of 32% compared with the previous month of June 2010.

There were 275 visitors arriving in Luganville in July 2010, a decrease of 11% compared to the same period of 2009.

The cruise ship visitors for the month of July showed a decrease of 19% from that of July 2009 and a decrease of 28% from June 2010.



Arrivals country of usual residence

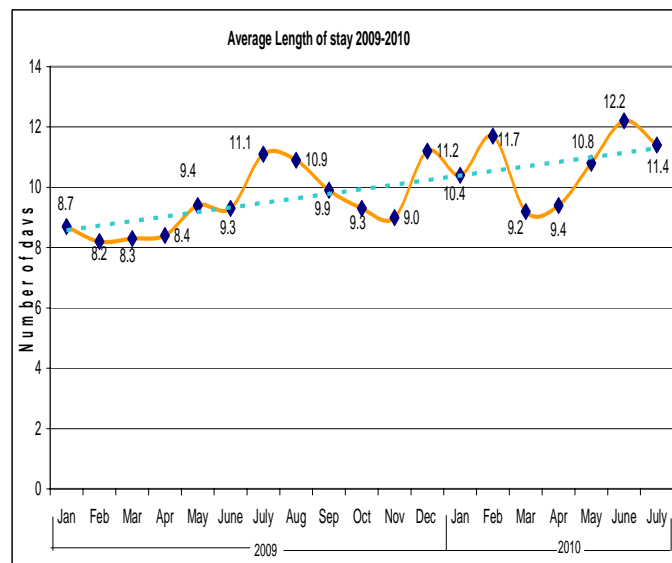
Australia continues to be the main source for tourist arrivals with 6,283 representing 59% of all arrivals in July 2010 followed by New Zealand with 1,657 representing 16%. When compared to July 2009 there was an increase in visitor arrivals from New Caledonia (28%) and Europe (10%). The largest percent increase compared to the previous month of June 2010 was a 127% in visitor arrivals from New Caledonia, increasing from 517 to 1,173; followed by Australia at 24% from 5,087 to 6,283 and New Zealand at 23% from 1,343 in June to 1,657 in July 2010.

Purpose of visit

In July 2010, 8,600 or 81% of visitor arrivals came to Vanuatu for holiday, a decrease compared to July 2009 where 87% came for a holiday. A further 996 or 9% came for a meeting, conference or other business an increase of 21% compared to July 2009. Finally 912 or 9% came to visit friends and relatives an increase of 89% over July 2009.

Length of stay

The average length of stay (intended) for visitors was 11.4 days in July; the same number of days compared to July 2009; and a slight decrease from 12.2 average days intended length of stay in June 2010.



Concepts and definitions

- Visitors are non-resident persons spending at least one night in Vanuatu.
- Residents are persons who declare themselves to be residents or an intending resident on immigration arrival cards.

Attached:

Table 1 Summary of Overseas Migration

Table 2 Visitor Arrivals by Purpose of Visit

Table 3 Visitor Arrivals by Country of Usual Residence

Table 4 Overseas Arrivals of Residents by Nationality

Notes

The data indicates that the Tourism sector in Vanuatu is recovering back to 2008 levels, perhaps due to marketing and promotion activities or more favourable economic conditions in the region or a combination of these and other factors.

NEXT UPDATE (MONTHLY)

August 2010

RELEASE DATE

30th September 2010

More information

For statistical enquiries about this topic, please contact:

National Statistics Office: (678) 22110/22111 – email stats@vanuatu.gov.vu

Provincial Statistics Offices

Torba Province: (678) 5522320

Sanma Province: (678) 36542/5522316

Penama Province: (678) 5522318

Malampa Province: (678) 5522317

Tafea Province: (678) 5522319



Simil Johnson

Government Statistician



Coordinating statistical activities and providing statistical leadership to enhance evidence based decision making for sustainable development in Vanuatu

Table 1 : Summary of Overseas Migration
Tableau 1 : Résumé des échanges migratoires avec l'extérieur

Year	Month	ARRIVALS / ARRIVEES						DEPARTURES / DEPARTURES						Cruise Ship Arrivals/ Croisiéristes	Année	Mois
		PORT VILA		LUGANVILLE		TOTAL		PORT VILA		LUGANVILLE		TOTAL				
		Residents Résidents	Visitors Visiteurs	Residents Résidents	Visitors Visiteurs	Residents Résidents	Visitors Visiteurs	Resident Résidents	Visitor Visiteurs	Resident Résidents	Visitors Visiteurs	Resident Résidents	Visitors Visiteurs			
2006	July	1,358	6,712	-	-	1,358	6,712	1,123	6,533	-	-	1,123	6,533	4,506	2006	Juil
2007	July	1,227	9,257	77	45	1,304	9,302	1,226	9,599	49	64	1,275	9,663	4,954	2007	Juil
2008	July	1,669	9,277	40	266	1,709	9,543	1,344	9,796	52	291	1,396	10,087	9,333	2008	Juil
2009	Jan	1,869	8,121	42	153	1,911	8,274	2,924	9,269	80	275	3,004	9,544	20,944	2009	Jan
	Feb	1,372	5,804	49	98	1,421	5,902	1,595	6,430	38	129	1,633	6,559	13,533		Fév
	Mar	1,228	6,444	34	113	1,262	6,557	1,600	6,667	65	102	1,665	6,769	10,421		Mar
	Apr	1,627	7,303	34	185	1,661	7,488	861	7,591	47	133	908	7,724	17,271		Avr
	May	1,692	7,197	69	157	1,761	7,354	866	7,604	36	84	902	7,688	9,362		Mai
	June	1,812	7,197	59	306	1,871	7,503	442	4,263	41	166	483	4,429	3,954		Juin
	July	1,485	11,191	46	309	1,531	11,500	858	11,406	55	261	913	11,667	11,529		Juil
	Aug	1,444	8,737	47	344	1,491	9,081	927	11,096	32	312	959	11,408	3,906		Aoû
	Sep	1,594	10,083	61	366	1,655	10,449	715	9,710	42	268	757	9,978	7,479		Sep
	Oct	1,473	9,814	48	321	1,521	10,135	1,007	10,486	30	309	1,037	10,795	10,777		Oct
	Nov	1,554	7,525	53	214	1,607	7,739	263	1,376	27	199	290	1,575	5,735		Nov
	Dec	1,938	8,408	52	285	1,990	8,693	2,510	15,928	15	192	2,525	16,120	9,907		Déc
2010	Jan	1,827	7,643	57	178	1,884	7,821	1,083	10,209	43	330	1,126	10,539	15,286	2010	Jan
	Feb	1,382	5,571	21	35	1,403	5,606	1,578	5,738	32	312	1,610	6,050	5,860		Fév
	Mar	1,197	6,454	28	16	1,225	6,470	1,167	6,824	5	6	1,172	6,830	12,784		Mar
	Apr	1,437	6,481	42	140	1,479	6,621	849	7,184	10	73	859	7,257	12,775		Avr
	May	2,041	6,745	33	122	2,074	6,867	990	7,294	2	100	992	7,394	7,557		Mai
	June	1,793	7,750	37	285	1,830	8,035	824	7,503	10	111	834	7,614	12,984		Juin
	July	1,772	10,319	43	275	1,815	10,594	914	11,225	15	200	929	11,425	9,334		Juil

Source: Immigration Department/Service de l'Immigration

- : nil/nul

Table 2 : Visitor Arrivals by Purpose of Visit
Tableau 2 : Arrivées de visiteurs selon le motif du voyage

Year	Month	Holidays Vacances	Visiting Friends and Relatives Visite à des amis et à la famille	Business, Meeting/Conf. Affaires, réunions ou conférence	Stop Over Escale	Others Purposes Autres motifs	Total Visitors Visiteurs global	Année	Mois
2006	July	5,301	641	732	38	-	6,712	2006	Juil
2007	July	7,174	720	1,171	237	-	9,302	2007	Juil
2008	July	7,643	834	995	71	-	9,543	2008	Juil
2009	Jan	6,870	762	578	64	-	8,274	2009	Jan
	Feb	4,476	536	713	55	122	5,902		Fév
	Mar	5,250	421	755	49	81	6,557		Mar
	Apr	5,987	624	780	56	40	7,488		Avr
	May	5,836	447	1,033	39	-	7,354		Mai
	June	5,826	869	786	-	22	7,503		Juin
	Jul	10,114	483	822	47	34	11,500		Juil
	Aug	7,615	301	1,090	74	1	9,081		Aoû
	Sep	9,515	90	829	4	11	10,449		Sep
	Oct	8,950	176	979	30	-	10,135		Oct
	Nov	6,744	231	723	40	-	7,739		Nov
	Dec	7,773	558	332	30	-	8,693		Déc
2010	Jan	6,744	427	559	91	-	7,821	2010	Jan
	Feb	4,161	323	1,060	62	-	5,606		Fév
	Mar	5,217	397	790	64	2	6,470		Mar
	Apr	5,441	349	784	44	3	6,621		Avr
	May	5,495	415	908	42	7	6,867		Mai
	June	6,394	709	862	71	-	8,035		Juin
	July	8,600	912	996	69	17	10,594		Juil

Source: Immigration Department/Service de l'Immigration

- : nil / nul

Table 3 : Visitor Arrivals by Usual Country of Residence
Tableau 3 : Arrivées des visiteurs par pays de résidence habituelle

Year	Month	Australia	New Zealand	New Caledonia	Other Pacific Countries	Europe	North America	Japan	Other Countries	TOTAL	Année	Mois
		Australie	Nouvelle-Zélande	Nouvelle-Calédonie	Autres Pays du Pacifique		Amérique du Nord	Japon	Autres pays			
2006	July	3,802	1,132	652	198	477	260	72	119	6,712	2006	Juil
2007	July	4,361	2,717	764	357	405	409	109	181	9,302	2007	Juil
2008	July	5,250	1,888	810	265	718	375	33	204	9,543	2008	Juil
2009	Jan	5,843	640	922	149	391	124	62	143	8,274	2009	Jan
	Feb	3,966	369	558	265	344	154	41	205	5,902		Fév
	Mar	4,647	649	362	234	340	138	64	122	6,557		Mar
	Apr	5,063	829	643	246	403	128	48	127	7,488		Avr
	May	4,247	1,005	914	353	400	227	46	163	7,354		Mai
	June	5,098	1,083	367	229	319	215	40	152	7,503		Juin
	July	6,964	1,939	920	437	560	380	50	250	11,500		Juil
	Aug	5,192	1,700	615	355	576	284	91	268	9,081		Août
	Sep	6,662	1,524	1,036	327	340	269	86	205	10,449		Sep
	Oct	6,633	1,352	790	483	435	213	37	192	10,135		Oct
	Nov	4,963	828	831	255	418	228	29	187	7,739		Nov
	Dec	5,631	688	1,197	374	365	189	49	201	8,693		Déc
2010	Jan	4,656	708	1,318	333	380	181	49	196	7,821	2010	Jan
	Feb	2,778	435	942	640	369	192	50	199	5,606		Fév
	Mar	4,155	694	527	340	317	195	43	198	6,470		Mar
	Apr	3,865	851	777	326	341	202	34	225	6,621		Avr
	May	3,622	952	1,078	323	410	201	24	257	6,867		Mai
	June	5,087	1,343	517	317	322	195	43	210	8,035		Juin
	July	6,283	1,657	1,173	346	615	247	41	232	10,594		Juil

Source: Immigration Department / Service de l'Immigration

Table 4 : Overseas Arrivals of Residents by Nationality

Tableau 4 : Arrivées des résidents par nationalité

Year	Month	Ni-Vanuatu	Australian Australien	French Français	British Anglais	New Zealander Néo- Zélandais	Asian Asiatiques	Pacific Islanders Autres pays du Pacifique	North Americans Américain du Nord	Other countries Autres pays	TOTAL	Année	Mois
2006	July	568	307	140	20	83	41	145	31	23	1,358	2006	Juil
2007	July	717	268	139	5	81	28	17	37	12	1,304	2007	Juil
2008	July	945	339	132	22	125	31	69	26	22	1,709	2008	Juil
2009	Jan	923	393	206	16	144	44	94	65	26	1,911	2009	Jan
	Feb	576	281	175	19	132	38	141	46	15	1,421		Fév
	Mar	589	316	113	15	104	40	42	24	20	1,262		Mar
	Apr	979	288	128	25	119	34	43	25	21	1,661		Avr
	May	1,061	274	186	19	110	39	26	24	23	1,761		Mai
	June	1,321	239	99	15	85	26	32	25	30	1,871		Juin
	July	847	304	140	8	98	39	38	34	23	1,531		Juil
	Aug	914	248	105	10	98	36	30	30	20	1,491		Août
	Sep	1,047	240	142	1	85	32	37	41	30	1,655		Sep
	Oct	788	323	167	4	121	22	34	32	30	1,521		Oct
	Nov	1,036	234	138	2	82	27	29	41	19	1,607		Nov
	Dec	1,447	240	138	1	69	30	21	26	20	1,990		Déc
2010	Jan	953	332	199	6	193	41	58	65	37	1,884	2010	Jan
	Feb	656	313	198	3	87	16	57	53	20	1,403		Fév
	Mar	623	225	136	6	113	37	34	35	16	1,225		Mar
	Apr	843	289	112	4	108	35	31	43	13	1,479		Avr
	May	1,382	297	179	6	110	45	19	16	20	2,074		Mai
	June	1,206	268	101	15	100	38	51	29	21	1,830		Juin
	July	846	347	186	20	127	63	167	28	31	1,815		Juil

Source: Immigration Department / Service de l'Immigration