



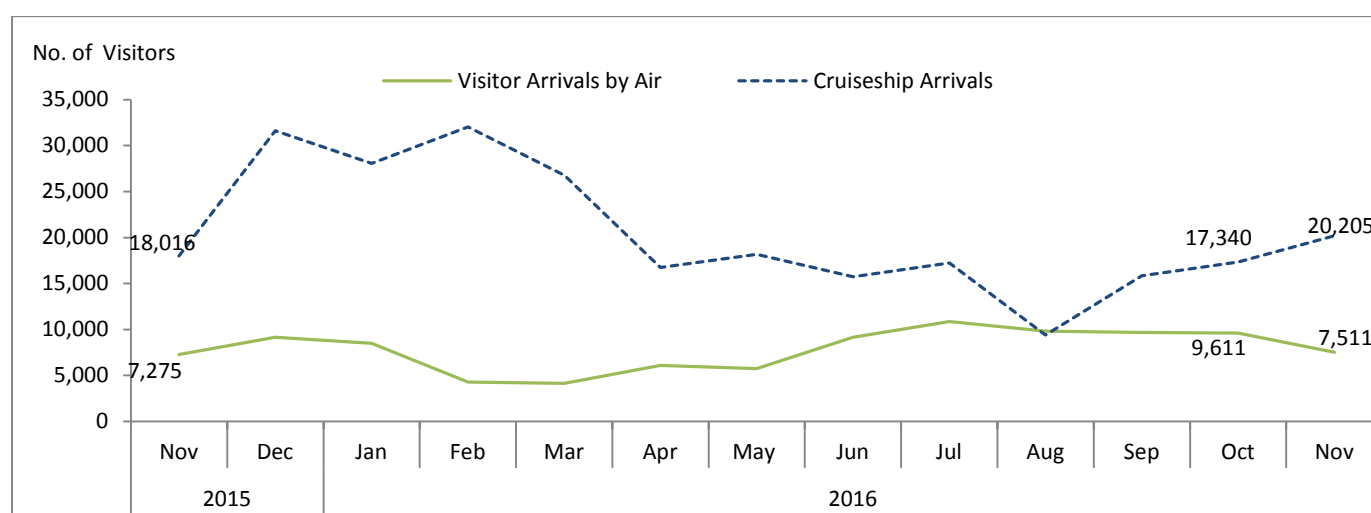
STATISTICS UPDATE: INTERNATIONAL ARRIVAL STATISTICS

NOVEMBER 2016 HIGHLIGHTS

RELEASE DATE: 17th of February 2017

OVERVIEW

Fig 1: International Visitor Arrivals: November 2015 to November 2016



- In November 2016, international Visitors arrivals by air made up 27% of total visitors to Vanuatu.
- Visitor arrivals by air stood at 7,511. It increased by 3% over November 2015, however it fell by (-22%) over the previous month. The increased was reflected by the number of visitors who arrived for holiday.
- In November 2016, 21% or 1 in 5 visitors by air also travelled to outer islands.
- Cruise ship or day visitors made up 73% of total international visitors to Vanuatu in November 2016. The day visitors stood at 20,205 visitors. It Increased by 12% over same month in previous year and increased by 17% over the previous month.

CONTENTS

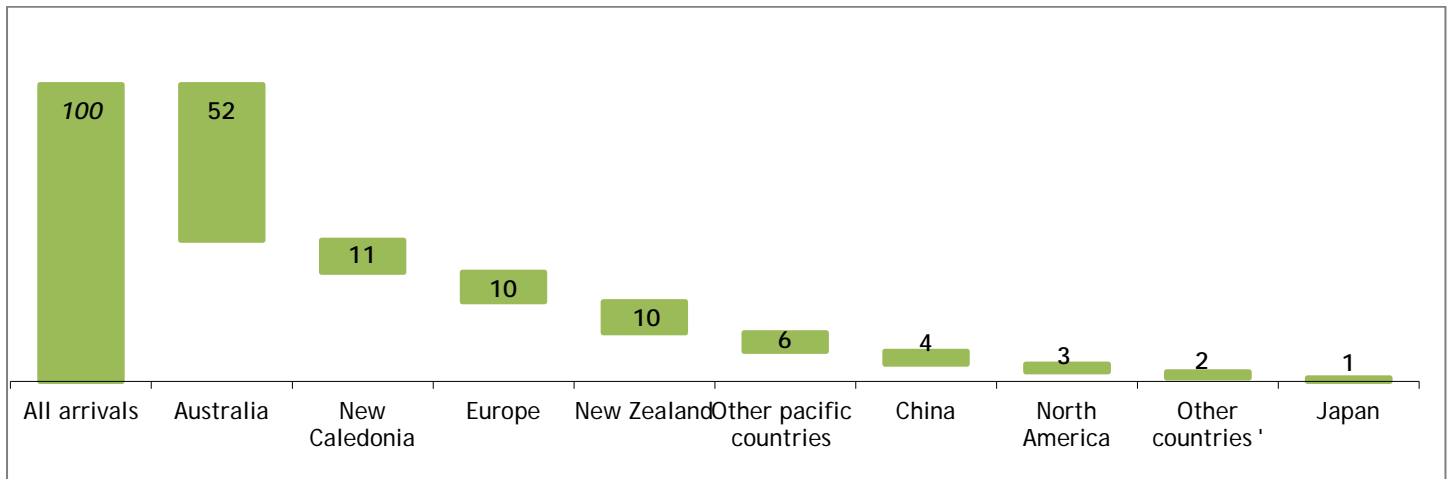
	Page #
HIGHLIGHTS	1-4
ANNEX 1-2	6
TABLES:	
1: Summary of Overseas migration	7
2: Visitors by Purpose of Visit	8
3: Visitors by Country of Usual Residence	9
4: Resident arrivals by Nationality	10
5: Visitors by air, Intended length of stay	11
6: Visitors by air, Average age	12
7: Visitors to outer islands	13

PURPOSE OF VISIT FOR VISITORS ARRIVING BY AIR

- Holiday visitors accounted for 72% of visitors arriving by air in November 2016. Visitors who arrived for business, meeting or conference at 11%, visitors who arrived to visit friends and relatives at 9%, visitors who arrived for educations and sports at 8% and visitors on transit made up 1%.

COUNTRY OF USUAL RESIDENCE FOR VISITORS ARRIVING BY AIR

Fig 2: Percentage share of visitors in November 2016 by Country of Usual Residence



- Australian visitors continued to make up the highest number of visitors arriving by air at 52%, followed by New Zealanders visitors at 11%, Europeans and New Caledonians at 10% each, other pacific countries visitors at 6%, Chinese visitors at 4%, North Americans at 3%, other countries visitors at 2% and Japanese visitors at 1%.

AVERAGE INTENDED LENGTH OF STAY FOR VISITORS ARRIVING BY AIR

- In November 2016, international visitor’s arrivals spent an average of 11 days. It increased by 1 day over November 2015, while it remained unchanged over the previous month.

AVERAGE AGE FOR VISITORS ARRIVING BY AIR

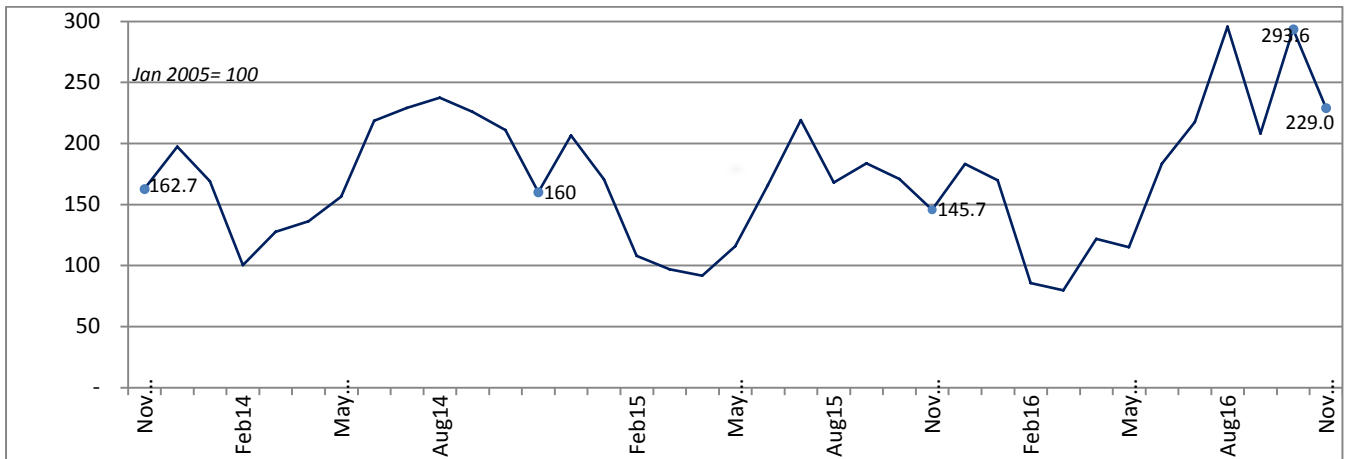
- The average age of visitors was 41 years in November 2016. The visitor’s average age decreased by 2 years over November 2016 and unchanged over the previous month.

VISITOR ARRIVAL INDEX¹

Figure 3 shows the total number of visitor arrivals and arrivals from Australia, New Zealand, New Caledonia and all other countries combined to show trends in arrivals, with the number of visitors.

Fig 3: Index of Total Air Visitor Arrivals, November 2013 to November 2016 (January 2005 = 100)

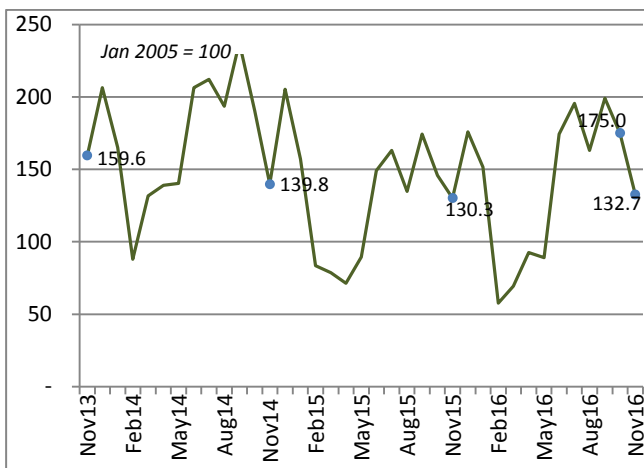
¹ Tourism in Vanuatu is seasonal, and it is difficult to analyse the changes in international arrivals and country of residence by looking at the monthly number of arrivals based on an index value of 100 in January 2005. This index allows analysis over time of the real increases and decreases in international air arrivals.



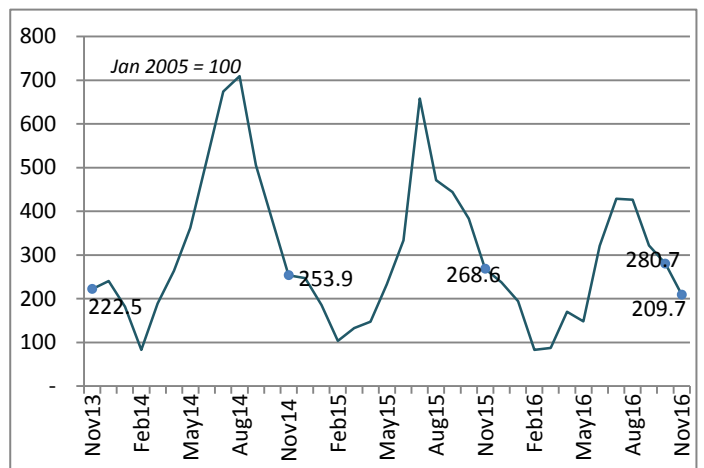
- In November 2016, Index figures for all visitors' arrivals Increase by 3% over November 2015. (Fig.3).

Fig 4: Index of Visitor Arrivals and Country of Usual Residence, November 2013 to November 2016 (January 2005 = 100)

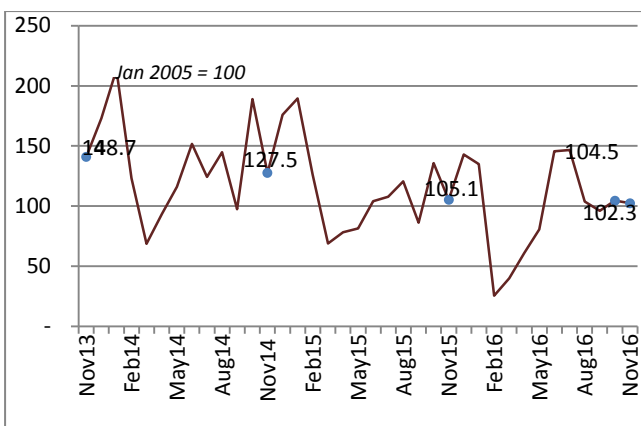
Australia



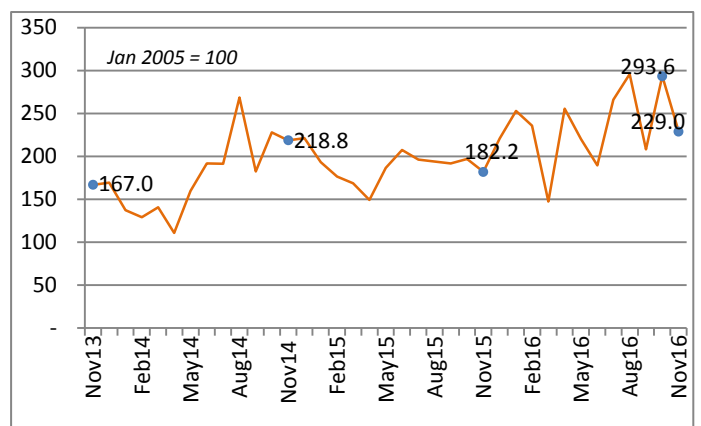
New Zealand



New Caledonia



All Other Countries



Note: the vertical axis scale varies in each country chart.

- The Australian market increased in index values at 2% in November 2016, while the New Zealand market decreased at (-22%) and New Caledonia market also decreased by (-3%) over November 2015.

SUMMARY OF VISITORS TO OUTER ISLANDS

The visitors to outer islands in November 2016 are highlighted on Annex 1 and Annex 2 attached (page5 and page6).

DATA SOURCE

All International arrival statistics by air provided in the report is sourced from completed Arrival and Departure cards at the Department of Immigration. Cruise ship figures are also sourced from the Department of Immigration.

NEXT UPDATE (MONTHLY)

December 2016

RELEASE DATE

24th February 2017

PROVINCIAL STATISTICS OFFICES

Millennium Building
Luganville, Santo
SANMA PROVINCE

PO Box 22
Lakatoro, Malekula
MALAMPA PROVINCE



Mr Simil Johnson
Government Statistician

SUMMARY OF VISITORS TO OUTER ISLANDS² (SEE TABLE 7)

Summary of Indicators

- In November 2016 Sanma Province received 38% of visitors arriving by air, followed by Tafea Province at 33%.
- Visitors travelling to outer islands spent an average of 6 days.

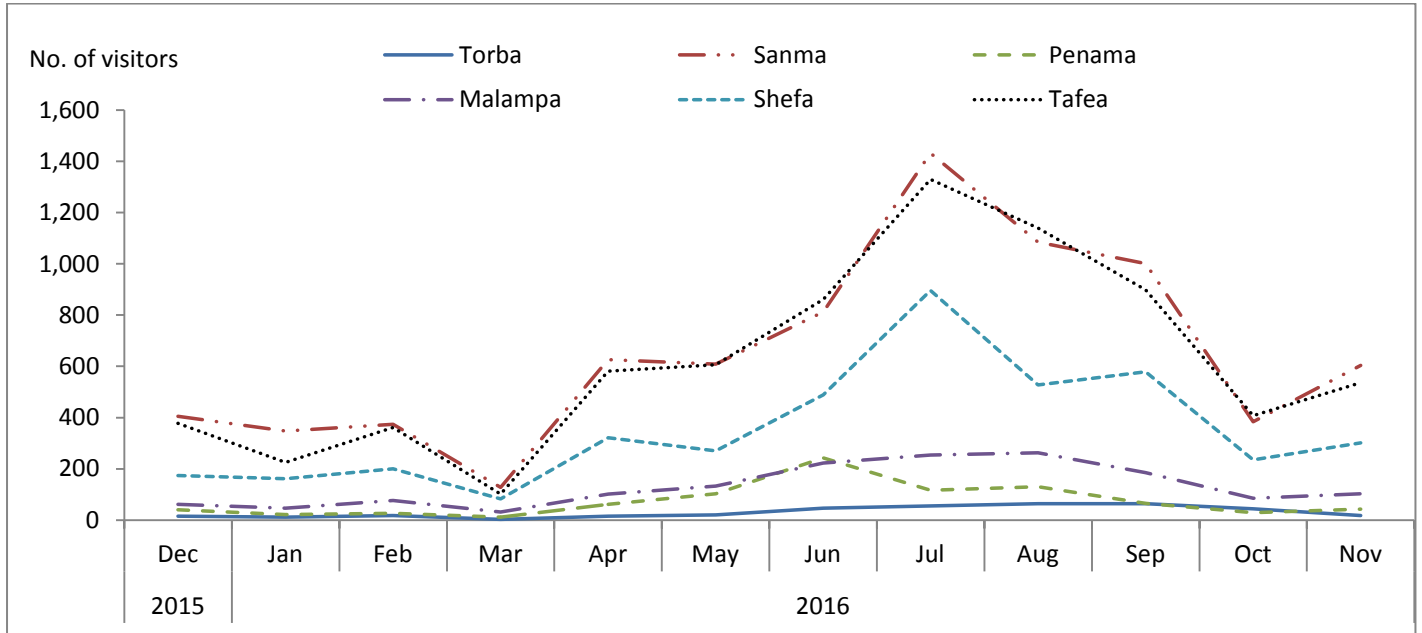


Figure 1: Summary of visitors to other province, November 2015 to November 2016

*Excludes Efate Island

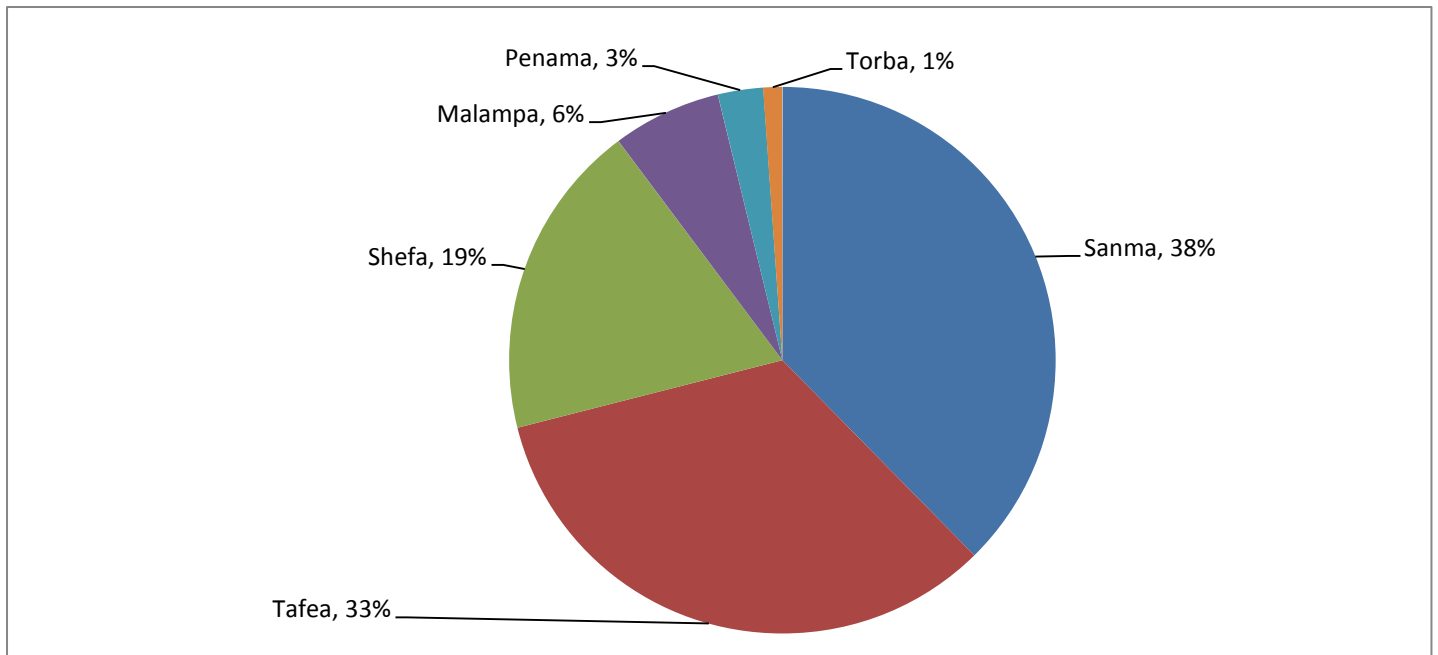


Figure 2: Proportion of visitors to other provinces, November 2016

*Excludes Efate Island

² Data on visitors travelling to outer islands is only available from May 2014

ANNEX 1 –VISITORS TO OUTER ISLANDS, BY PROVINCE

Table 1: Visitors to outer islands, by province

Year	Month	Province						TOTAL
		Torba	Sanma	Penama	Malampa	Shefa*	Tafea	
2015	Nov	31	514	21	143	337	426	1,472
	Dec	15	405	40	62	174	378	1,074
2016	Jan	12	347	22	47	161	225	814
	Feb	18	374	27	76	200	361	1,056
	Mar	3	83	12	32	83	101	359
	Apr	15	626	62	101	321	581	1,706
	May	20	609	103	133	270	606	1,741
	Jun	46	812	242	223	489	861	2,673
	Jul	55	1,432	116	254	896	1,330	4,083
	Aug	64	1,085	130	263	527	1,140	3,209
	Sep	64	1,001	65	185	579	898	2,792
	Oct	44	384	29	85	235	407	1,184
	Nov	18	604	43	103	301	536	1,605

Source: Department of Immigration

*Excludes Efate Island

Table 2: The average length of stay (nights) for visitors travelling to outer islands, by province

Year	Month	Province						TOTAL
		Torba	Sanma	Penama	Malampa	Shefa*	Tafea	
2015	Nov	11.5	6.3	12.4	7.6	4.1	4.0	7.6
	Dec	6.5	9.7	5.3	6.6	3.9	4.9	6.2
2016	Jan	9.3	7.2	21.2	5.2	3.8	3.7	8.4
	Feb	7.8	8.2	15.2	8.8	4.2	3.4	7.9
	Mar	10.3	5.0	4.4	2.9	4.6	3.8	5.2
	Apr	50.6	6.3	7.3	9.6	6.5	3.8	14.0
	May	2.3	6.3	2.5	8.0	4.7	3.4	4.6
	Jun	4.1	7.2	3.2	6.2	3.7	4.2	4.8
	Jul	4.9	5.8	5.5	6.4	2.8	3.9	4.9
	Aug	4.2	7.5	6.4	10.1	4.3	4.2	4.2
	Sep	4.2	7.4	5.0	5.9	4.0	4.0	5.1
	Oct	4.2	16.1	9.4	6.0	5.4	3.4	7.5
	Nov	4.4	6.2	8.3	7.8	3.9	4.2	5.8

Source: Department of Immigration

*Excludes Efate Island

Table 1 : Summary of Overseas Migration**Tableau 1 : Résumé des échanges migratoires avec l'extérieur**

Year	Month	ARRIVALS / ARRIVEES						DEPARTURES / DEPARTURES						Cruiseship Arrivals/ Croisiéristes	Année	Mois
		PORT VILA		LUGANVILLE		TOTAL		PORT VILA		LUGANVILLE		TOTAL				
		Residents Résidents	Visitors Visiteurs	Residents Résidents	Visitors Visiteurs	Residents Résidents	Visitors Visiteurs	Resident Résidents	Visitor Visiteurs	Resident Résidents	Visitors Visiteurs	Resident Résidents	Visitors Visiteurs			
2012		22,594	105,611	364	2,550	22,958	108,161	14,803	113,158	134	2,339	14,937	115,497	213,243	2012	
2013		25,116	106,466	495	3,643	25,611	110,109	16,380	118,753	164	3,496	16,544	122,249	247,296	2013	
2014		25,268	104,471	616	4,337	25,884	108,808	18,705	117,236	375	3,531	19,080	120,767	220,205	2014	
2015		26,655	85,527	307	4,425	26,962	89,952	19,116	95,301	161	3,030	19,277	98,331	197,471	2015	
2012	Nov	1,869	11,471	21	299	1,890	11,770	995	12,740	14	337	1,009	13,077	18,595	2012	Nov
2013	Nov	2,073	11,390	44	465	2,117	11,855	1,057	12,901	9	412	1,066	13,313	16,759	2013	Nov
2014	Nov	2,030	10,944	56	502	2,086	11,446	1,339	12,891	67	341	1,406	13,232	11,470	2014	Nov
2015	Jan	2,396	8,219	37	305	2,433	8,524	1,547	12,350	53	342	1,600	12,692	26,923	2015	Jan
	Feb	1,575	5,176	9	213	1,584	5,389	2,019	5,978	12	118	2,031	6,096	18,803		Fév
	Mar	1,905	4,527	28	310	1,933	4,837	1,288	5,599	9	153	1,297	5,752	6,530		Mar
	Apr	2,219	4,263	5	315	2,224	4,578	1,463	5,183	11	221	1,474	5,404	7,384		Avr
	May	2,605	5,470	10	317	2,615	5,787	1,557	5,831	9	122	1,566	5,953	13,430		Mai
	Jun	2,012	7,761	54	528	2,066	8,289	1,409	7,005	6	273	1,415	7,278	8,357		Juin
	Jul	2,060	9,727	40	304	2,100	10,031	1,703	11,070	12	284	1,715	11,354	19,023		Juil
	Aug	2,054	8,022	21	368	2,075	8,390	1,163	7,393	13	412	1,176	7,805	13,223		Aoû
	Sep	2,766	8,712	9	459	2,775	9,171	1,234	8,817	3	155	1,237	8,972	16,708		Sep
	Oct	1,951	8,115	26	418	1,977	8,533	2,038	10,177	17	400	2,055	10,577	17,450		Oct
	Nov	2,598	6,919	13	356	2,611	7,275	2,224	7,774	15	275	2,239	8,049	18,016		Nov
	Dec	2,514	8,616	55	532	2,569	9,148	1,471	8,124	1	275	1,472	8,399	31,624		Dec
2016	Jan	2,029	8,081	20	398	2,049	8,479	1,644	11,475	14	287	1,658	11,762	28,070	2016	Jan
	Feb	1,180	4,018	38	256	1,218	4,274	1,760	4,491	13	298	1,773	4,789	32,021		Feb
	Mar	1,293	3,902	1	253	1,294	4,155	1,350	4,202	10	252	1,360	4,454	26,776		Mar
	Apr	1,757	5,620	18	463	1,775	6,083	1,314	6,305	6	382	1,320	6,687	16,733		Apr
	May	2,669	5,377	74	365	2,743	5,742	1,530	6,506	39	281	1,569	6,506	18,186		Mai
	Jun	2,512	8,653	44	505	2,556	9,158	1,426	8,208	9	326	1,435	8,534	15,737		Juin
	Jul	1,887	10,297	25	567	1,912	10,864	1,739	11,353	12	433	1,751	11,786	17,242		Juil
	Aug	1,836	8,960	37	859	1,873	9,819	1,774	9,339	17	548	1,791	9,339	9,403		Aoû
	Sep	2,556	9,099	17	573	2,573	9,672	1,485	8,760	13	423	1,498	9,182	15,825		Sep
	Oct	1,791	9,127	22	484	1,813	9,611	1,540	4,808	14	402	1,554	5,210	17,340		Oct
	Nov	2,363	7,040	23	471	2,386	7,511	2,465	7,917	14	352	2,479	8,269	20,205		Nov

Source: Immigration Department/Service de l'Immigration

Table 2 : Visitor Arrivals by Purpose of Visit
Tableau 2 : Arrivées de visiteurs selon le motif du voyage

Year	Month	VISITORS/VISITEURS						Année	Mois
		Holidays	Visiting Friends and relatives	Business, Meetings/ Conferences	Stop Over	Others, Education, sports	Total Visitors		
		Vacances	Visite à des amis et à la famille	Affaires, réunions ou conférence	Escale	Autres, education, sport	Visiteurs global		
2012		88,085	7,910	11,294	602	270	108,161	2012	
2013		89,253	7,755	9,079	613	3,409	110,109	2013	
2014		86,239	7,672	8,007	1,022	5,868	108,808	2014	
2015		63,625	8,495	8,687	336	8,809	89,952	2015	
2012	Nov	10,089	640	1,350	58	45	12,182	2012	Nov
2013	Nov	6,389	566	757	36	375	8,123	2013	Nov
2014	Nov	5,816	564	780	162	674	7,996	2014	Nov
2015	Jan	6,846	524	377	11	766	8,524	2015	Jan
	Feb	3,702	461	556	21	649	5,389		Fév
	Mar	1,899	689	988	2	1,259	4,837		Mar
	Apr	2,281	670	709	13	905	4,578		Avr
	May	3,618	607	936	19	607	5,787		Mai
	Jun	5,643	851	761	42	992	8,289		Juin
	Jul	7,771	873	629	47	711	10,031		Juil
	Aug	6,154	796	831	35	574	8,390		Août
	Sep	6,956	712	836	59	608	9,171		Sep
	Oct	6,468	694	704	30	637	8,533		Oct
	Nov	5,147	637	809	40	642	7,275		Nov
	Dec	7,140	981	551	17	459	9,148		Dec
2016	Jan	6,918	613	363	20	565	8,479	2016	Jan
	Feb	3,249	323	373	30	299	4,274		Fév
	Mar	2,989	396	410	7	353	4,155		Mar
	Apr	4,470	476	605	53	479	6,083		Avr
	May	3,820	605	908	47	362	5,742		Mai
	Jun	6,905	782	826	63	582	9,158		Juin
	Jul	8,347	969	842	74	632	10,864		Juil
	Aug	6,992	900	1,010	62	855	9,819		Aug
	Sep	7,360	787	797	40	688	9,672		Sep
	Oct	6,956	817	951	59	828	9,611		Oct
	Nov	5,416	648	807	39	601	7,511		Nov

Source: Immigration Department/Service de l'Immigration

Table 3 : Visitor Arrivals by Usual Country of Residence
Tableau 3 : Arrivées des visiteurs par pays de résidence habituelle

Year	Month	Australia	New Zealand	New Caledonia	Other Pacific Countries	Europe	North America	Japan	China	Other Countries	TOTAL	Année	Mois
		Australie	Nouvelle-Zélande	Nouvelle-Calédonie	Autres Pays du Pacifique		Amérique du Nord	Japon	Chine	Autres pays			
2012		65,405	14,430	13,138	4,313	5,491	2,094	705	623	1,962	108,161	2012	
2013		65,776	15,068	12,515	4,874	5,544	2,614	659	1,062	1,997	110,109	2013	
2014		60,808	16,293	12,756	6,630	5,591	2,373	763	1,563	2,031	108,808	2014	
2015		46,098	13,422	10,567	5,953	5,839	2,962	633	2,186	2,292	89,952	2015	
2012	Nov	4,622	790	1,071	293	505	156	55	50	162	7,704	2012	Nov
2013	Nov	4,735	830	1,107	413	448	239	86	137	128	8,123	2013	Nov
2014	Nov	4,147	947	1,001	882	544	157	53	127	138	7,996	2014	Nov
2015	Jan	4,664	693	1,487	619	470	201	59	154	177	8,524	2015	Jan
	Feb	2,479	386	991	504	389	164	53	258	165	5,389		Fév
	Mar	2,335	495	540	482	348	234	74	120	209	4,837		Mar
	Apr	2,116	549	614	428	327	166	63	122	193	4,578		Avr
	May	2,655	870	639	435	589	213	26	158	202	5,787		Mai
	Jun	4,428	1,243	816	583	537	296	33	149	204	8,289		Juin
	Jul	4,842	2,454	845	418	694	336	75	185	182	10,031		Juil
	Aug	4,000	1,758	946	483	468	263	52	239	181	8,390		Août
	Sep	5,170	1,656	677	419	496	235	62	206	250	9,171		Sep
	Oct	4,325	1,429	1,065	514	521	303	44	142	190	8,533		Oct
	Nov	3,865	1,002	825	470	403	274	43	219	174	7,275		Nov
	Dec	5,219	887	1,122	598	597	277	49	234	165	9,148		Dec
2016	Jan	4,495	724	1,060	486	979	276	75	174	210	8,479	2016	Jan
	Feb	1,714	310	200	396	1,027	180	67	226	154	4,274		Fév
	Mar	2,060	325	313	267	664	168	44	175	139	4,155		Mar
	Apr	2,749	636	478	344	1,160	178	53	262	223	6,083		Avr
	May	2,644	552	632	508	823	190	51	181	161	5,742		Mai
	Jun	5,170	1,197	1,143	402	495	306	70	217	158	9,158		Juin
	Jul	5,803	1,600	1,150	708	682	302	88	266	265	10,864		Juil
	Aug	4,842	1,592	814	467	1,136	317	126	259	266	9,819		Aug
	Sep	5,909	1,201	753	444	654	216	106	184	205	9,672		Sep
Oct	5,193	1,047	820	565	1,079	359	53	240	255	9,611	Oct		
Nov	3,936	782	804	473	750	192	92	323	159	7,511	Nov		

Source: Immigration Department/Service de l'Immigration

Table 4 : Overseas Arrivals of Residents by Nationality**Tableau 4 : Arrivées des résidents par nationalité**

Year	Month	Ni-Vanuatu	Australian Australien	French Français	British Anglais	New Zealander Néo- Zélandais	Asian Asiatiques	Pacific Islanders Autres pays du Pacifique	North Americans Américain du Nord	Other countries Autres pays	TOTAL	Année	Mois
2012		14,317	3,629	1,526	203	1,236	696	686	370	295	22,958	2012	
2013		15,410	4,096	1,782	167	1,293	915	1,007	566	375	25,611	2013	
2014		15,044	4,297	1,934	104	1,274	966	1,161	690	414	25,884	2014	
2015		17,406	3,557	1,672	95	1,206	1,008	1,045	569	404	26,962	2015	
2012	Nov	1,442	304	146	18	99	36	56	35	31	2,167	2012	Nov
2013	Nov	1,692	382	153	1	102	87	75	66	24	2,582	2013	Nov
2014	Nov	1,713	365	145	10	122	75	83	54	32	2,599	2014	Nov
2015	Jan	1,306	368	220	4	138	94	181	74	48	2,433	2015	Jan
	Feb	814	258	180	0	96	83	80	46	27	1,584		Fév
	Mar	1,033	363	102	2	103	105	81	114	30	1,933		Mar
	Apr	1,290	371	183	3	122	76	89	39	51	2,224		Avr
	May	1,885	293	87	21	101	85	79	39	25	2,615		Mai
	Jun	1,428	283	124	17	62	48	58	23	23	2,066		Juin
	Jul	1,330	292	84	6	94	85	127	34	48	2,100		Juil
	Aug	1,250	270	179	4	104	92	84	54	38	2,075		Aoû
	Sep	2,155	233	86	6	85	76	69	32	33	2,775		Sep
	Oct	1,189	267	149	12	118	92	69	50	31	1,977		Oct
	Nov	1,845	306	141	11	103	78	73	22	32	2,611		Nov
	Dec	1,881	253	137	9	80	94	55	42	18	2,569		Dec
2016	Jan	1,246	301	159	17	97	76	85	44	24	2,049	2016	Jan
	Feb	859	147	51	5	56	41	30	15	14	1,218		Fév
	Mar	905	164	50	7	48	26	48	31	15	1,294		Mar
	Apr	1,332	191	47	9	59	54	47	11	24	1,775		Apr
	May	2,055	257	108	16	80	102	62	33	30	2,743		Mai
	Jun	1,817	272	133	27	86	98	65	29	29	2,556		Juin
	Jul	1,306	215	73	12	82	78	72	49	25	1,912		Juil
	Aug	1,233	212	149	19	86	58	61	28	27	1,873		Aoû
	Sep	2,090	191	76	8	57	63	43	27	18	2,573		Sep
	Oct	1,275	213	104	12	58	51	46	30	24	1,813		Oct
	Nov	1,924	175	87	10	82	39	42	10	17	2,386		Nov

Source: Immigration Department / Service de l'Immigration

Table 5 : Visitors Arriving by Air Intended Length of Stay***Tableau 5 : Arrivée des Visiteurs à longue durée de Séjour**

Year	Month	AVERAGE INTENDED LENGTH OF STAY / LA MOYENNE DE LONGUE DUREE DE SEJOUR			Année	Mois
		Port Vila	Luganville	Vanuatu		
2012		9.8	11.1	10.5	2012	
2013		10.8	11.6	11.2	2013	
2014		9.5	11.5	10.6	2014	
2015		10.5	11.7	11.1	2015	
2012	Nov	8.9	9.0	9.0	2012	Nov
2013	Nov	8.0	11.8	9.9	2013	Nov
2014	Nov	8.1	8.6	9.3	2014	Nov
2015	Jan	8.9	9.2	9.0	2015	Jan
	Feb	12.5	10.8	11.7		Fév
	Mar	11.5	15.5	13.5		Mar
	Apr	11.1	10.4	10.8		Avr
	May	10.4	14.3	12.3		Mai
	Jun	11.6	11.4	11.5		Juin
	Jul	11.7	12.5	12.1		Juil
	Aug	10.5	10.9	10.7		Août
	Sep	9.5	10.8	10.2		Sep
	Oct	9.5	11.6	10.5		Oct
	Nov	8.9	10.3	9.6		Nov
	Dec	10.2	12.4	11.3		Dec
2016	Jan	10.3	11.2	10.8	2016	Jan
	Feb	11.4	10.7	11.0		Fév
	Mar	8.5	13.7	11.1		Mar
	Apr	11.2	11.2	11.2		Avr
	May	9.3	13.3	11.3		Mai
	Jun	9.8	12.6	11.2		Juin
	Jul	10.5	10.9	10.7		Juil
	Aug	10.6	12.6	11.6		Août
	Sep	10.8	11.0	10.9		Sep
	Oct	10.9	11.0	10.9		Oct
	Nov	9.8	11.8	10.8		Nov

Source: Immigration Department/Service de l'Immigration

Table 6 : Visitors Arriving by Air Average Age
Tableau 6 : Arrivée des Visiteurs par Age moyen

Year	Month	AVERAGE AGE OF VISITORS / L'AGE MOYEN DES VISITEURS			Année	Mois
		Port Vila	Luganville	Vanuatu		
2012	Nov	36.6	41.6	39.1	2012	Nov
2013	Nov	32.5	38.7	35.6	2013	Nov
2014	Nov	38.9	41.1	40.0	2014	Nov
2015	Jan	33.3	36.2	34.8	2015	Jan
	Feb	39.6	46.4	43.0		Fév
	Mar	39.6	41.2	40.4		Mar
	Apr	38.7	41.7	40.2		Avr
	May	38.8	48.5	43.7		Mai
	Jun	38.0	27.6	32.8		Juin
	Jul	38.1	43.8	41.0		Juil
	Aug	40.7	45.5	43.1		Aoû
	Sep	37.6	40.1	38.8		Sep
	Oct	37.2	42.4	39.8		Oct
	Nov	39.9	41.6	40.7		Nov
	Dec	39.9	36.2	38.0		Dec
2016	Jan	34.1	38.9	36.5	2016	Jan
	Feb	40.5	42.2	41.3		Fév
	Mar	38.4	39.6	39.0		Mar
	Apr	39.6	39.6	39.6		Apr
	May	42.0	45.6	43.8		Mai
	Jun	37.4	42.1	39.8		Juin
	Jul	35.5	42.4	39.0		Juil
	Aug	40.7	43.5	42.1		Aoû
	Sep	37.9	40.4	39.2		Sep
	Oct	39.0	43.5	41.3		Oct
	Nov	39.8	42.1	41.0		Nov

Source: Immigration Department/Service de l'Immigration

Table 7: Visitors travelling to Outer Islands, Vanuatu**Tableau 7: Les visiteurs en voyage d'Îles Extérieures, Vanuatu**

Year	Month	Tanna	Santo	Efate offshore Islands	Pentecost Island	Malekula	Ambrym	Other Islands	TOTAL	Année	Mois
				Efate et les îles côtières	îles Pentecôte	Malicolo		D'autres îles			
2014	Nov	499	366	255	8	65	51	145	1,389	2014	Nov
2015	Jan	611	420	261	15	56	22	103	1,488	2015	Jan
	Feb	264	208	46	11	27	25	65	646		Fév
	Mar	257	249	139	16	42	12	68	783		Mar
	Apr	351	327	243	59	28	38	117	1,163		Avr
	May	356	366	258	38	31	39	130	1,218		Mai
	Jun	461	559	339	75	90	58	206	1,788		Juin
	Jul	634	663	534	43	87	79	256	2,296		Juil
	Aug	649	659	324	24	149	95	236	2,136		Août
	Sep	515	458	395	14	88	54	139	1,663		Sep
	Oct	650	649	543	24	76	116	214	2,272		Oct
	Nov	415	441	337	142	65	63	142	1,472		Nov
	Dec	369	333	174	127	43	18	127	1,074		Dec
2016	Jan	222	303	161	15	33	14	66	814	2016	Jan
	Feb	359	342	200	13	44	29	69	1,056		Fév
	Mar	359	342	200	13	44	29	69	1,056		Mar
	Apr	100	108	83	5	24	7	32	359		Apr
	May	576	552	321	54	54	39	110	1,706		Mai
	Jun	800	745	490	190	113	97	238	2,673		Juin
	Jul	1,225	1,244	954	53	132	104	371	4,083		Juil
	Aug	1,073	1,003	547	45	145	99	297	3,209		Aug
	Sep	821	830	620	23	45	129	324	2,792		Sep
	Oct	363	334	250	11	41	40	145	1,184		Oct
	Nov	498	550	304	21	55	43	134	1,605		Nov

Source: Department of Immigration

Note: Data on visitors travelling to outer islands is only available from May 2014