

## STATISTICS UPDATE: MERCHANDISE TRADE STATISTICS

### SEPTEMBER 2015 HIGHLIGHTS

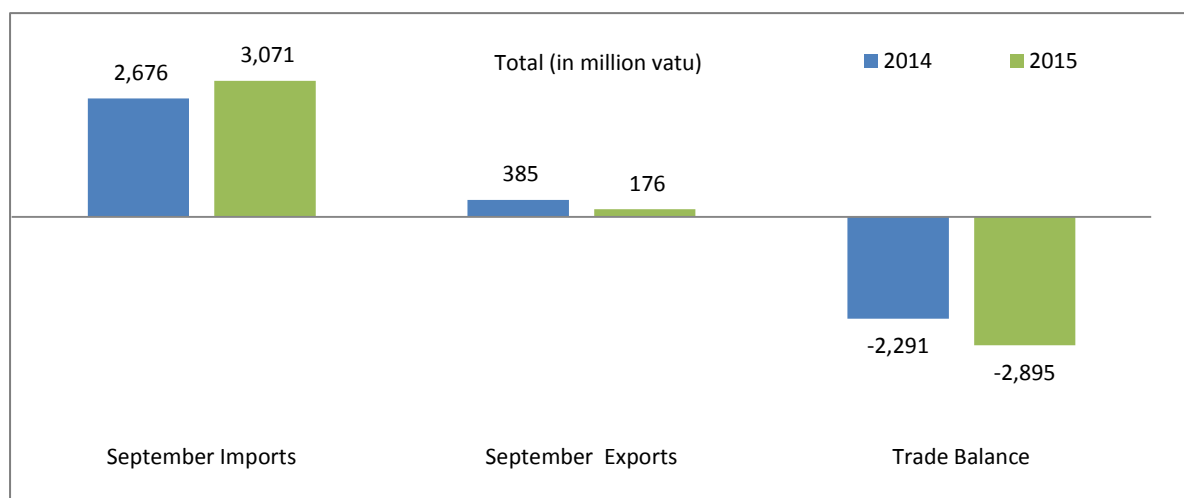


Figure 1: Terms of trade September 2015 and September 2014 (Million Vatu)

Merchandise trade provisional figures for September 2015, recorded a deficit balance of VT2,895 million over September 2014, indicating a deterioration of 26% or VT604 million. This deterioration was caused by the value of total imports (VT3,071 million) exceeded that of total exports (VT176 million).

Domestic export earnings (excluding re-exports) for September 2015 stood at VT176 million, a decrease of 54% or VT209 million over September 2014. This decrease was attributable to declines in copra, cocoa and kava exports.

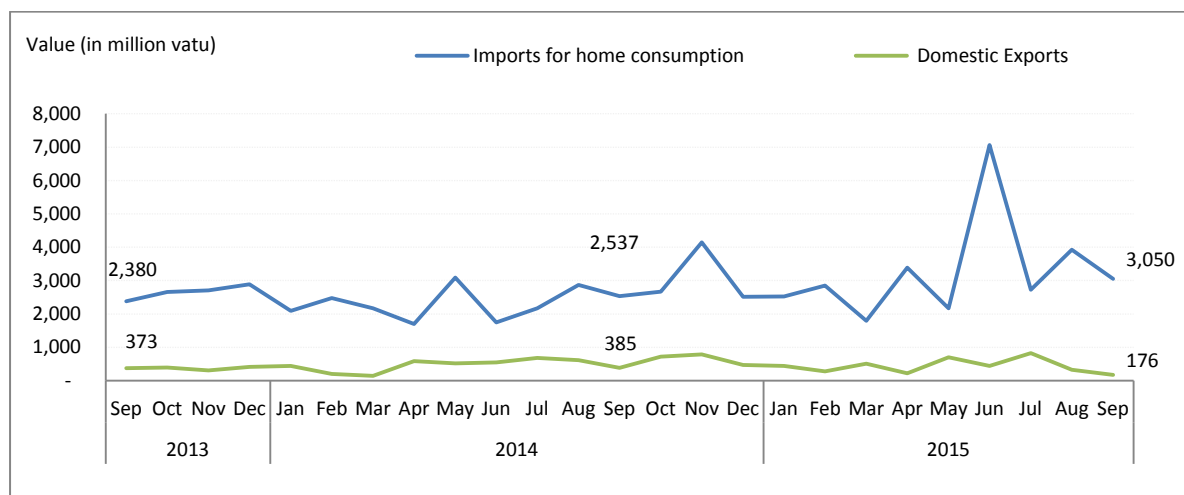


Figure 2: Overseas trade exports and imports for home consumption (million vatu)

## EXPORTS

In September 2015, for the main export commodities, Coconut oil constituted the largest share in value at VT54 million or 30%, followed by sawn timber 20%, beef 17%, coconut meal 16%, life fish 4%, cowhides, 1% and other products at 12% altogether compared to September 2014. Other products comprised mainly of tamanu oils and scrap metals. (See at tached Table 2, Table 3)

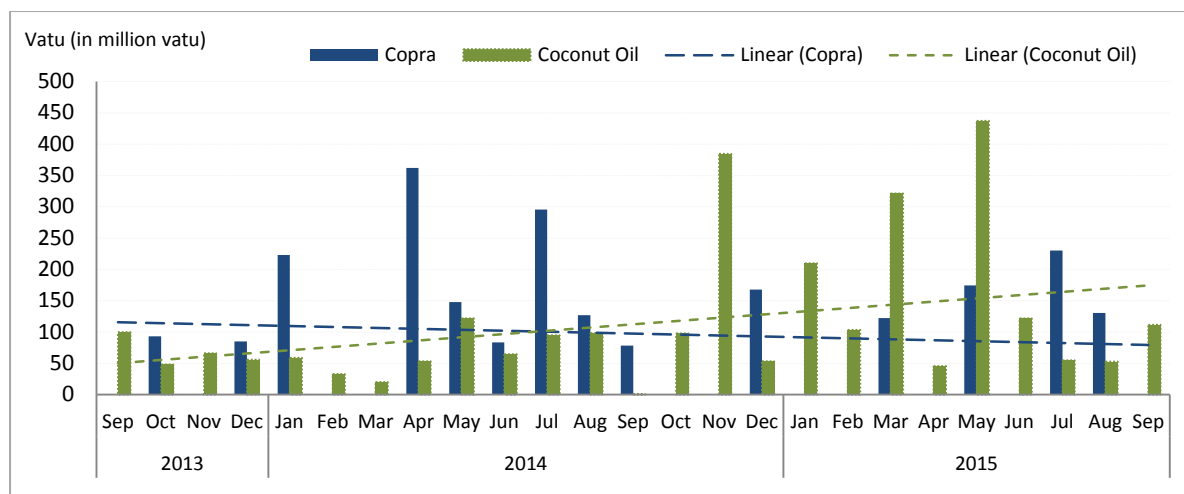


Figure 3: Exports of Coconut Products (million vatu)

Coconut products exports in September 2015 recorded an increase in coconut oil at VT53 million and copra meal at 91% or VT29 million over September 2014. However, there were no shipments on copra exports over the same period in 2014.

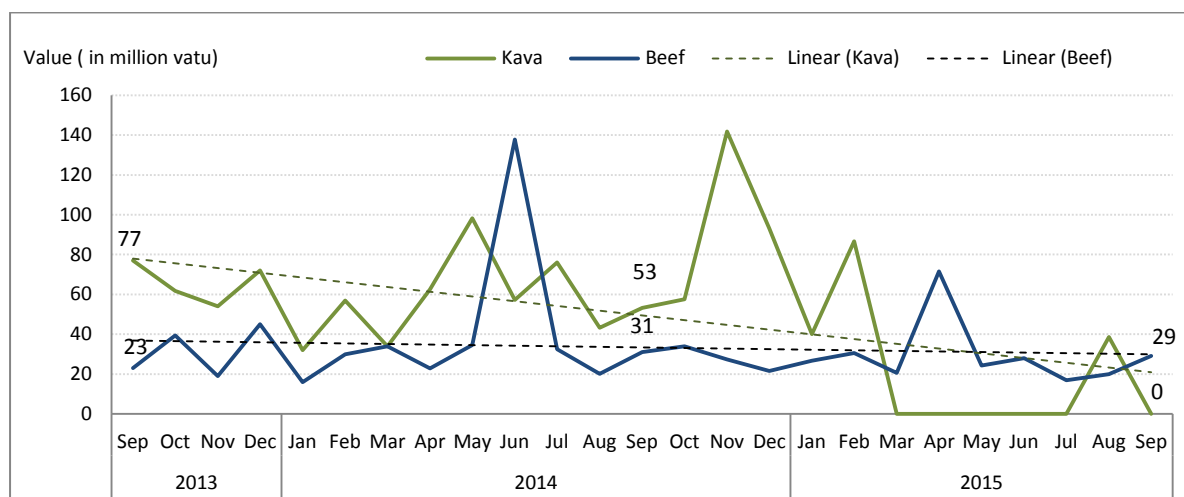


Figure 4: Exports of Kava and Beef Products (million vatu)

The export value decreased by 6% or VT2 million for beef in the month of September 2015 compared to September 2014. Most of the beef was mainly exported to Papua New Guinea, Japan and Solomon Islands.

## IMPORTS

In terms of imports by commodity groups, machines and transport registered the largest share in value (C.I.F) at 29% or VT881 million of the total imports for home consumption, followed by basic manufactured products at 23% or VT703 million, food and live animals at 16%, miscellaneous goods at 11%, mineral fuels at 9%, chemical products at 7%, beverages and tobacco at 3%, and crude materials at 2%, while oils and fats made up less than 1% of the total imports in September 2015 over September 2014.

The commodity group which increased the most in September 2015 were basic manufactured goods at 84%, followed by mineral fuels at 32%, crude materials at 30%, machines and transport at 26%, miscellaneous goods at 13% and oils and fats at VT9 million altogether over September 2014. However, the rest of the commodity group that decreased: goods not classified elsewhere as 98%, beverages and tobacco at 14%, food and live animals at 13% and chemical products at 4% over the same period of the previous year.

The distribution of imported goods by country grouping were stable over September 2014. Australia, Singapore and New Zealand were the main countries of origin of imports for home consumption in September 2015.

## REVISIONS TO IMPORTS AND EXPORTS STATISTICS

The Vanuatu National Statistics Office receives import and export statistics data on quantity and value from the Department of Customs and Inland Revenue's ASYCUDA merchandise trade processing system. On occasion revisions are made to import and export entries after publication. The Vanuatu National Statistics Office makes every possible effort to check the data and resolve inconsistencies and anomalies with colleagues from the Department of Customs and Inland Revenue prior to publishing. Where revisions are necessary these are highlighted in the statistical tables.

## CONCEPTS AND DEFINITIONS

- **Imports for Home Consumption** are goods, materials or articles purchased in other countries and brought into Vanuatu and cleared through customs procedures for home consumption. Imports for home consumption are valued on a C.I.F. (cost, insurance, freight) basis. This means that for each commodity, the value recorded includes the factory price, the cost of packaging, the freight cost from overseas to Vanuatu ports and the insurance.
- **Exports** are expressed in F.O.B. (free on board) prices. It means the total value includes the production cost and the transport cost to the Vanuatu port of export.
- **Imports for re-export** refers to imports destined to be re-exported without having undergone any transformation, or only minor ones. This is especially the case of duty free goods and fuel "imported" into the country and sold to non-resident airline operators or ships.
- **Re-exports** are goods, materials or articles exported in the same condition as they were imported, and imported goods, which have undergone operations such as repair, repacking, or bottling which leave them essentially unchanged before exporting.

**ATTACHED**

- Table 1: Summary of Merchandise trade
- Table 2: Principal domestic exports, value
- Table 3: Principal domestic exports, quantity
- Table 4: Imports cleared for home consumption, value

**NEXT UPDATE (MONTHLY)****RELEASE DATE**

October

15<sup>th</sup> December 2015**FOR MORE INFORMATION**

For statistical enquiries about this topic, Please do not hesitate to contact:

Vanuatu National Statistics Office: (678) 22110/22111/33040, Voip: 1124

Email: [stats@vanuatu.gov.vu](mailto:stats@vanuatu.gov.vu)

Website: <http://www.vnso.gov.vu> Facebook: [www.facebook.com/NSOVU](http://www.facebook.com/NSOVU)

**PROVINCIAL STATISTICS OFFICES**

PO Box 22  
Lakatoro, Malekula  
**MALAMPA**

Commercial Center  
Lenakel, Tanna  
**TAFEA**

PO Box 8  
Saratamata, Ambae  
**PENAMA**

Sola, Vanua Lava  
Banks group  
**TORBA**

Millennium Building  
Luganville, Santo  
**SANMA**




**Mr Simil Johnson**  
Government Statistician

**Table 1 Summary of Overseas Trade**  
**Tableau 1 Récapitulatif du commerce extérieur**

**In Million Vatu**  
**En millions de Vatu**

Year / Quarter	EXPORTS F.O.B / EXPORTATION FAB					IMPORTS C.I.F / IMPORTATIONS CAF							Année Trimestre
	Domestic Exports Exportation de produits locaux			Re-exports	Total Exports	Imports for Home Consumption / Importations destinées à la Consommation intérieure			Imports for Re- exports	Total Imports	Trade Balance	Balance Ratio	
	Luganville	Port Vila	Total	Ré- exportations	Total des Exportations (E)	Luganville	Port Vila	Total	Importations pour ré- exportations	Total des Importations (I)	Déficit Commercial (E)-(I)	Taux de Couverture (E)/(I)	
2011	3,816	2,196	6,012	-	6,012	4,259	22,803	27,062	193	27,256	(21,243)	0.2	2011
2012	3,305	1,768	5,072	-	5,072	4,075	22,832	26,907	547	27,454	(22,382)	0.2	2012
2013	2,233	1,419	3,653	-	3,653	4,184	25,262	29,446	207	29,652	(26,000)	0.1	2013
2014	4,274	1,826	6,100	-	6,100	4,587	25,610	30,197	237	30,435	(24,335)	0.2	2014
2014 1st	504	283	787	-	787	998	5,747	6,745	15	6,760	(5,972)	0.1	2014 1er
2nd	1,341	311	1,652	-	1,652	986	5,558	6,544	32	6,577	(4,925)	0.3	2ème
3rd	1,138	539	1,677	-	1,677	1,349	6,229	7,578	146	7,723	(6,047)	0.2	3ème
4th	1,291	693	1,984	-	1,984	1,254	8,077	9,331	44	9,375	(7,391)	0.2	4ème
2015 1st	944	283	1,227	-	1,227	1,182	5,985	7,167	25	7,192	(5,965)	0.2	2015 1er
2nd	1,131	229	1,360	-	1,360	1,111	11,515	12,626	95	12,720	(11,360)	0.1	2ème
3rd	704	619	1,324	-	1,324	2,656	7,046	9,702	36	9,739	(8,415)	0.1	3ème
2014 Jan	337	104	441	-	441	225	1,868	2,093	0	2,093	(1,652)	0.2	2014 Jan
Feb	94	105	199	-	199	495	1,984	2,480	6	2,485	(2,286)	0.1	Fèv
Mar	73	74	147	-	147	277	1,895	2,172	9	2,181	(2,034)	0.1	Mars
Apr	488	98	586	-	586	429	1,273	1,703	7	1,710	(1,125)	0.3	Avr
May	420	102	522	-	522	306	2,785	3,090	24	3,115	(2,593)	0.2	Mai
Jun	433	111	544	-	544	251	1,500	1,751	1	1,752	(1,208)	0.3	Juin
Jul	544	134	678	-	678	337	1,830	2,167	3	2,171	(1,493)	0.3	Juil
Aug	332	282	614	-	614	581	2,293	2,874	4	2,878	(2,264)	0.2	Août
Sep	262	123	385	-	385	432	2,106	2,537	138	2,676	(2,291)	0.1	Sep
Oct	268	457	725	-	725	297	2,373	2,670	5	2,675	(1,950)	0.3	Oct
Nov	640	149	789	-	789	482	3,667	4,149	38	4,187	(3,398)	0.2	Nov
Dec	383	87	471	-	471	475	2,037	2,512	1	2,514	(2,043)	0.2	Dec
2015 Jan	259	186	445	-	445	509	2,014	2,523	3	2,526	(2,081)	0.2	2015 Jan
Feb	197	80	276	-	276	341	2,510	2,851	6	2,857	(2,581)	0.1	Fèv
Mar	488	18	506	-	506	332	1,461	1,793	16	1,809	(1,304)	0.3	Mars
Apr	133	84	217	-	217	275	3,115	3,389	61	3,450	(3,233)	0.1	Avr
May	665	40	705	-	705	249	1,920	2,169	32	2,201	(1,496)	0.3	Mai
Jun	334	105	438	-	438	588	6,480	7,068	2	7,070	(6,631)	0.1	Juin
Jul	386	435	822	-	822	395	2,328	2,723	4	2,727	(1,905)	0.3	Juil
Aug	220	106	326	-	326	1,558	2,372	3,930	11	3,940	(3,615)	0.1	Août
Sep	98	78	176	-	176	703	2,347	3,050	22	3,071	(2,895)	0.1	Sep

Source: Department of Customs and Inland Revenue / Service des Douanes et Contributions Indirectes

**Table 2 Principal Domestic Exports, in Value**  
**Tableau 2 Principales exportations de produits locaux, en valeur**

**In million Vatu**  
**En millions de Vatu**

Year Quarter	Copra	Coconut oil	Beef veal	Cocoa	Shell	Sawn Timber	Cowhides	Kava	Coffee	Vanilla	Coconut Meal	Root crops	Live Cattle	Live Fish	Fish	Other products	Total	Année Trimestre
	Coprah	Huile de coco	Viande bovine	Cacao	Coquillages	Bois débité	Cuir et peaux		Café	Vanille	Farine de coprah	Récolte de racines	Bétail vivant	Poisson vivant	Poisson	Autres produits		
2011	1,065	1,592	516	247	30	65	29	762	18	5	87	1	0	166	359	898	6,012	2011
2012	1,087	1,162	518	258	27	42	27	661	3	11	92	-	-	136	185	702	5,072	2012
2013	452	458	326	294	30	165	28	834	6	7	143	-	-	88	139	566	3,651	2013
2014	1,485	1,081	441	454	44	425	27	807	28	4	117	0	-	142	10	1,032	6,100	2014
2013 1st	143	89	89	23	6	15	8	168	3	2	25	-	-	20	55	83	763	2013 1er
2nd	83	95	73	98	8	10	4	223	1	1	17	-	-	25	33	57	749	2ème
3rd	48	103	61	123	7	47	10	255	1	1	62	-	-	20	33	221	1,022	3ème
4th	179	170	104	51	9	92	5	188	1	3	40	-	-	22	19	206	1,118	4ème
2014 1st	223	112	80	9	19	4	5	124	1	1	21	-	-	61	8	117	787	2014 1er
2nd	593	240	195	154	0	22	8	218	2	1	28	-	-	27	1	160	1,652	2ème
3rd	501	194	84	95	18	268	6	173	15	0	34	0	-	37	-	254	1,677	3ème
4th	168	535	83	196	7	130	8	292	10	2	35	0	-	18	-	500	1,984	4ème
2015 1st	122	634	78	16	-	21	4	127	1	0	57	-	-	67	-	99	1,226	2015 1er
2nd	174	605	124	87	27	45	4	-	3	-	163	0	-	12	-	116	1,360	2ème
3rd	361	161	66	72	-	273	7	39	1	-	72	-	-	17	-	255	1,324	3ème
2014 Jan	223	59	16	6	-	1	3	32	0	1	7	-	-	40	4	48	441	2014 Jan
Feb	-	33	30	3	19	0	2	57	-	-	2	-	-	10	1	41	199	Fèv
Mar	-	20	34	-	-	3	-	34	1	0	12	-	-	10	3	29	147	Mars
Apr	362	53	23	5	-	10	3	63	-	0	8	-	-	9	1	49	586	Avril
May	148	122	35	44	0	7	2	98	0	0	9	-	-	8	-	49	522	Mai
Jun	83	65	138	105	-	6	2	57	1	1	11	-	-	10	-	61	544	Juin
Jul	296	95	32	48	18	15	1	76	1	-	13	0	-	10	-	74	678	Juil
Aug	127	98	20	42	-	213	5	43	1	0	6	-	-	20	-	39	614	Août
Sep	78	1	31	5	-	40	-	53	13	-	15	0	-	7	-	142	385	Sep
Oct	-	98	34	59	-	68	5	58	2	-	17	0	-	7	-	379	725	Oct
Nov	-	385	27	79	7	53	1	142	1	1	12	0	-	8	-	72	789	Nov
Dec	168	53	22	58	-	9	2	93	7	1	6	-	-	3	-	49	471	Dec
2015 Jan	-	210	27	12	-	15	2	40	0	0	16	-	-	60	-	63	445	2015 Jan
Feb	-	103	31	4	-	6	2	87	1	-	10	-	-	6	-	27	276	Fèv
Mar	122	321	21	-	-	-	-	-	-	-	31	-	-	2	-	9	506	Mars
Apr	-	46	72	17	16	16	2	-	1	-	8	0	-	4	-	36	217	Avr
May	174	437	24	32	10	1	-	-	0	-	4	-	-	3	-	19	705	Mai
Jun	-	122	28	38	-	29	2	-	2	-	152	-	-	5	-	62	438	Juin
Jul	230	55	17	65	-	214	2	-	1	-	19	-	-	5	-	213	822	Juil
Aug	131	53	20	7	-	24	2	39	1	-	24	-	-	5	-	21	326	Août
Sep	-	54	29	-	-	35	2	-	-	-	29	-	-	7	-	21	176	Sep

Source: Department of Customs and Inland Revenue / Service des Douanes et Contributions Indirectes (r) revised data

**Table 3 Principal Domestic Exports, in Quantity**  
**Tableau 3 Principales exportations, en quantité**

**In tonnes**

**En tonnes**

Year / Quarter	Copra	Coconut oil	Beef veal	Cocoa	Shell	Cowhides	Kava	Coffee	Vanilla	Coconut Meal	Root crops	Live Cattle	Live Fish	Fish	Année Trimestre
	Coprah	Huile de coco	Viande bovine	Cacao	Coquillages	Cuir et peaux		Café	Vanille	Farine de coprah	Récolte de racines	Bétail vivant	Poisson vivant	Poisson	
2011	13,596	12,000	1,105	1,068	10	336	734	27	1	6,917	4	0	205	2,743	2011
2012	16,336	10,011	1,031	1,415	9	387	643	3	3	6,082	-	-	134	682	2012
2013	12,508	5,535	703	1,649	10	402	819	6	2	7,692	-	-	77	391	2013
2014	25,194	9,208	1,014	2,025	13	287	786	28	1	4,786	1	-	126	28	2014
2013 1st	4,022	838	205	136	2	114	158	3	1	1,660	-	-	13	150	2013 1er
2nd	2,438	1,529	142	491	3	72	223	1	0	1,162	-	-	21	84	2ème
3rd	1,326	1,016	129	724	2	120	252	1	0	2,966	-	-	25	105	3ème
4th	4,722	2,152	227	298	3	96	186	1	1	1,904	-	-	18	52	4ème
2014 1st	4,123	1,524	183	49	5	61	119	1	0	518	-	-	54	25	2014 1er
2nd	9,102	4,127	472	671	0	92	214	2	0	1,469	-	-	17	2	2ème
3rd	8,808	1,722	185	409	6	58	165	15	0	1,512	0	-	35	-	3ème
4th	3,161	1,835	173	896	2	77	288	10	1	1,286	1	-	19	-	4ème
2015 1st	2,013	4,031	163	106	-	41	128	1	0	1,539	-	-	62	-	2015 1er
2nd	3,018	4,664 r	246	347	8	59	0	3	-	1,174	0	-	17	-	2ème
3rd	6,031	1,631 r	140	271	-	232	33	3	-	1,326	-	-	15	-	3ème
2014 Jan	4,123	837	42	33	-	40	36	-	0	117	-	-	39	10	2014 Jan
Feb	-	536	68	16	5	21	55	-	-	123	-	-	9	5	Fév
Mar	-	151	73	-	-	-	28	1	0	279	-	-	7	10	Mars
Apr	5,551	851	52	28	-	49	61	-	0	419	-	-	6	2	Avril
May	2,273	2,301	85	187	0	21	96	0	0	487	-	-	6	-	Mai
Jun	1,278	976	335	456	-	22	57	2	0	563	-	-	5	-	Juin
Jul	4,770	841	72	210	6	18	72	1	-	369	0	-	6	-	Juil
Aug	2,349	866	45	169	-	40	41	1	0	319	-	-	24	-	Août
Sep	1,689	15	68	30	-	-	52	13	-	824	0	-	5	-	Sep
Oct	-	842	71	237	-	40	57	2	-	467	0	-	6	-	Oct
Nov	-	502	56	419	2	17	139	1	0	527	1	-	12	-	Nov
Dec	3,161	491	46	239	-	20	93	7	0	292	-	-	2	-	Dec
2015 Jan	-	1,725	56	44	-	20	42	0	0	689	-	-	56	-	2015 Jan
Feb	-	801	63	63	-	21	87	1	-	466	-	-	5	-	Fév
Mar	2,013	1,505	44	-	-	-	-	-	-	383	-	-	1	-	Mars
Apr	-	357	149	75	4	20	-	1	-	352	0	-	3	-	Avr
May	3,018	3,362	46	120	3	-	-	0	-	190	-	-	3	-	Mai
Jun	-	945 r	51	152	-	39	0	2	-	631	-	-	12	-	Juin
Jul	3,877	537 r	36	240	-	210	-	1	-	877	-	-	5	-	Juil
Aug	2,154	547	47	31	-	22	33	1	-	343	-	-	4	-	Août
Sep	-	546	58	-	-	-	-	2	-	106	-	-	6	-	Sep

Source: Department of Customs and Inland Revenue / Service des Douanes et Contributions Indirectes

**Table 4 Imports Cleared for Home Consumption, in Value**  
**Tableau 4 Importations destinées à la consommation intérieure par produit selon la Classification type pour le commerce international, en valeur**

**In million Vatu**  
**En million de Vatu**

Year	Quarter	Food & Live Animals	Beverages & Tobacco	Crude Materials Except Fuels	Mineral Fuels	Oils, Fats & Waxes	Chemical Products	Basic Manufactured Products	Machines & Transport Equipment	Miscellaneous Manufactured Goods	Goods N.E.C.	Total	Année	Trimestre
		Produits alimentaires et animaux vivants	Boissons et tabacs	Matières brutes non combustibles	Energie fossile	Huiles et graisses animales et végétales	Produits chimiques	Produits manufacturés	Machines et matériels de transports	Produits manufacturés divers	Articles et transactions, N.C.A			
2011		5,537	1,038	379	4,835	129	2,855	3,566	5,542	2,820	362	27,062	2011	
2012		5,307	1,153	432	4,621	141	2,809	3,590	5,964	2,575	314	26,907	2012	
2013		6,068	1,146	510	4,599	124	2,685	3,950	6,881	3,165	319	29,446	2013	
2014		5,904	1,176	470	5,290	107	2,269	3,627	7,960	3,110	285	30,197	2014	
2014	1st	1,065	264	81	1,667	15	565	895	1,499	617	76	6,745	2014	1er
	2nd	1,327	204	95	1,301	25	505	686	1,642	717	41	6,544		2ème
	3rd	1,733	313	152	1,077	29	574	945	1,850	794	111	7,578		3ème
	4th	1,780	394	142	1,246	38	624	1,101	2,968	981	57	9,331		4ème
2015	1st	1,406	271	102	1,352	33	454	1,193	1,658	661	38	7,167	2015	1er
	2nd	2,993	240	237	1,277	33	641	4,261	2,042	897	5	12,626		2ème
	3rd	1,751	270	204	789	25	622	2,183	2,991	866	2	9,702		3ème
2014	Jan	362	69	21	513	4	173	320	420	199	11	2,093	2014	Jan
	Feb	326	88	21	750	7	210	291	587	182	18	2,480		Fèv
	Mar	376	108	39	404	4	183	284	492	236	48	2,172		Mars
	Apr	336	67	41	225	9	144	173	467	233	9	1,703		Avril
	May	544	75	30	1,033	9	198	264	649	270	17	3,090		Mai
	Jun	447	62	24	43	7	163	248	527	214	16	1,751		Juin
	Jul	631	77	61	55	10	172	283	557	289	33	2,167		Juil
	Aug	537	122	46	819	15	185	280	591	215	62	2,874		Août
	Sep	565	114	44	203	5	217	382	702	290	17	2,537		Sep
	Oct	501	78	48	687	8	174	288	562	288	34	2,670		Oct
	Nov	661	144	56	521	22	248	392	1,783	308	13	4,149		Nov
	Dec	617	172	38	38	8	202	420	623	385	10	2,512		Dec
2015	Jan	411	87	25	729	12	137	381	530	184	27	2,523	2015	Jan
	Feb	446	107	26	614	13	144	508	762	221	10	2,851		Fèv
	Mar	549	78	50	9	8	172	305	366	256	0	1,793		Mars
	Apr	734	65	63	529	13	246	609	802	327	1	3,389		Avr
	May	562	109	103	43	7	137	461	542	200	5	2,169		Mai
	Jun	1,698	66	71	704	13	257	3,191	698	369	-	7,068		Juin
	Jul	530	100	63	211	7	230	517	779	284	2	2,723		Juil
	Aug	728	72	83	311	4	185	962	1,330	255	-	3,930		Août
	Sep	494	98	57	268	14	207	703	881	327	0	3,050		Sep

Source: Department of Customs and Inland Revenue / Service des Douanes et Contributions Indirectes