

## STATISTICS UPDATE: CONSUMER PRICE INDEX

### JUNE QUARTER 2017 HIGHLIGHTS

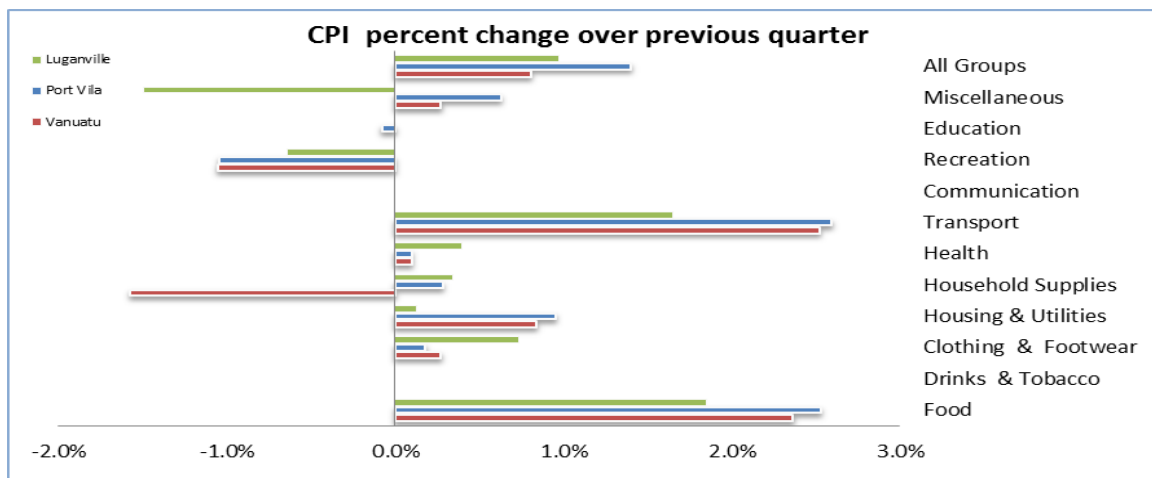


Figure 1: CPI per cent change over previous quarter

### CPI QUARTERLY MOVEMENT

The Consumer Price Index (CPI) of June, 2017 indicated an increase of (+1.3 %). Port Vila increased by (+1.4%) and Luganville increased slightly by (+1.0%), compared to the previous quarter. The expenditure group that contributed to the increase in the CPI were: Transport (+2.5%), Food (+2.4%), Housing Utilities (+0.8%), Clothing & Footwear, Health and Miscellaneous contributed (+0.3%) respectively, and Health (+0.1%). However, Drink & tobacco, Communication and Education remain constant. Other only remaining group that contributed to the decrease in was Recreation (-1.1%). The main contributor in prices was due to the increases in price movements of purchasing of airline tickets, fruits and vegetables, in both regions and electricity supply charges in Port Vila. However, the sub group that showed negative impact on the price movements was the purchasing of repair to visual equipment and pets food.

## CPI ANNUAL MOVEMENT

When compared to the June quarter of 2016, the Vanuatu index increased by (+2.7%), Port Vila index increased by (+4.0%) and Luganville index slightly increased by (1.0%). At national level, the expenditure groups that contributed to the increase over the same quarter of last year were: Food (+7.3%), Transport (+5.7%) Education (+3.2%), Household Supplies (+0.7%), Health and Housing Utilities (+0.2%) respectively and Drinks and Tabaco (+0.1%).The increases in these expenditure groups were the result of increases in price movements of purchasing of international airline tickets , Fruits and Vegetables, and School Fees While the other groups that shows negative impact were Communication (-3.3%), Miscellaneous (-2.0%), Recreation (-1.8%), Clothing and Footwear(-0.1%).

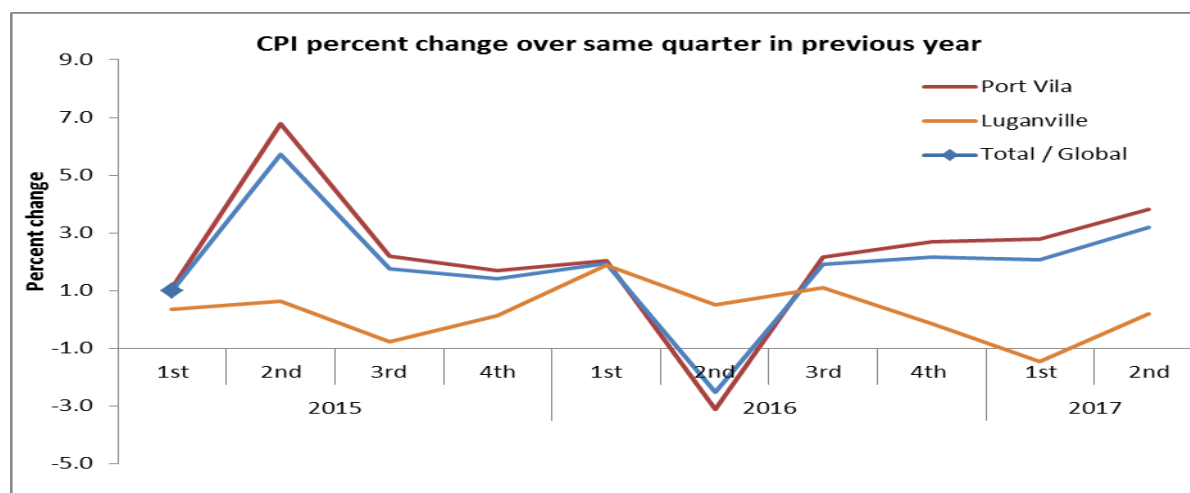


Figure 2: CPI per cent change over same quarter in previous year

## UNDERLYING INFLATION

'Underlying inflation' is a measure derived from the CPI excluding items which typically have unstable or volatile prices; because of things like seasonal variation or policy decisions. In June quarter of 2017, underlying inflation increased by (+0.9 %) over the previous quarter, and remain constant over the same quarter of 2016.

## CONCEPTS AND DEFINITIONS

The Consumer Price Index (CPI) is used to measure the changes in the prices of goods and services purchased by households in Port Vila and Luganville over a period of time. The separate indices for these two major commercial centres are then combined to create the Vanuatu CPI.

This change in prices is sometimes called inflation. Retail stores, supermarkets, liquor outlets, transport operators, service stations and other providers of goods and services help supply the Vanuatu National Statistics Office with the information to calculate the CPI. Prices are collected for exactly the same goods and services each quarter. This ensures that changes in the cost of goods

and services over time are not due to changes in the quantity or quality of the goods and services purchased.

**ATTACHED:**

Table 1 Consumer Price Index: All Items

Table 2 Consumer Price Index: Expenditure Groups

**NEXT UPDATE (QUARTERLY)**

**RELEASE DATE**

SEPTEMBER

3<sup>rd</sup> of November, 2017

**MORE INFORMATION**

For statistical enquiries about this topic, please contact:

National Statistics Office: (678) 22110/22111 – email: [stats@vanuatu.gov.vu](mailto:stats@vanuatu.gov.vu)

**NATIONAL STATISTICS OFFICES IN THE PROVINCES**

Millennium Building

Luganvillie, Santo

Sanma Province.

The image shows a handwritten signature in blue ink on the left. To its right is a circular official seal. The seal has a double border. The outer border contains the text "REPUBLIC OF VANUATU" at the top and "REPUBLIQUE DE VANUATU" at the bottom, separated by two small stars. The inner border contains the text "NATIONAL STATISTICS OFFICE" at the top and "GOVERNMENT STATISTICIAN" at the bottom, also separated by two small stars.

**Simil Johnson**  
**Government Statistician**

**Table 1 Consumer Price Index**

**Base: 1st Quarter 2000 = 100**

**Tableau 1 Indice des prix à la consommation**

**Base: 1<sup>er</sup> Trimestre 2000 = 100**

Year	Quarter	Consumer Price Indices			Underlying	Rate of Change (%)			Rate of Change (%)			Année	Trimestre
		Indice des prix à la consommation			Inflation Index	Variation par rapport			Variation				
		Total / Global	Port Vila	Luganville	Inflation sous-jacente	Total / Global	Port Vila	Luganville	Total / Global	Port Vila	Luganville		
						<b>Over Previous Year / à l'année précédente</b>			<b>4th Quarter over 4th Quarter of previous year / du 4ème trimestre au 4ème trimestre de l'année précédente</b>				
2012		138.8	138.6	139.9	126.8	1.4	1.4	1.2	0.8	0.9	0.5	2012	
2013		140.8	140.6	142.1	129.3	1.5	1.4	1.6	1.5	1.4	1.7	2013	
2014		142.0	141.7	143.2	130.7	0.8	0.8	0.8	1.1	1.2	0.5	2014	
2015		145.5	145.9	143.3	131.9	2.5	2.9	0.1	1.4	1.7	0.1	2015	
2016		146.7	147.2	144.5	133.1	0.9	0.9	0.8	2.0	2.0	1.9	2016	
						<b>Over Previous Quarter / au trimestre précédent</b>			<b>Over Same Quarter of previous year / au même trimestre de l'année précédente</b>				
2012	1st	138.6	138.3	139.8	126.2	0.5	0.5	0.4	2.1	2.1	2.0	2012	1er
	2nd	138.7	138.5	139.7	126.9	0.1	0.1	-0.1	1.5	1.5	1.3		2ème
	3rd	138.9	138.7	139.9	126.6	0.1	0.1	0.1	1.1	1.1	1.1		3ème
	4th	139.0	138.8	140.0	127.4	0.1	0.1	0.1	0.8	0.9	0.5		4ème
2013	1st	140.5	140.3	141.2	129.0	1.1	1.1	0.9	1.4	1.4	1.0	2013	1er
	2nd	140.8	140.5	142.3	129.3	0.2	0.1	0.8	1.5	1.4	1.9		2ème
	3rd	140.9	140.6	142.6	129.4	0.1	0.1	0.2	1.4	1.4	1.9		3ème
	4th	141.1	140.8	142.4	129.5	0.1	0.1	-0.1	1.5	1.4	1.7		4ème
2014	1st	141.5	141.3	142.7	129.9	0.3	0.4	0.2	0.7	0.7	1.1	2014	1er
	2nd	141.7	141.4	143.3	130.6	0.1	0.1	0.4	0.6	0.6	0.7		2ème
	3rd	142.0	141.7	143.7	130.9	0.2	0.2	0.3	0.8	0.8	0.8		3ème
	4th	142.6	142.5	143.1	131.3	0.4	0.6	-0.4	1.1	1.2	0.5		4ème
2015	1st	142.9	142.8	143.2	130.9	0.2	0.2	0.1	1.0	1.1	0.4	2015	1er
	2nd	149.8	151.0	144.2	132.8	4.8	5.7	0.7	5.7	6.8	0.6		2ème
	3rd	144.5	144.8	142.6	131.4	-3.5	-4.1	-1.1	1.8	2.2	-0.8		3ème
	4th	144.6	144.9	143.3	132.3	0.1	0.1	0.5	1.4	1.7	0.1		4ème
2016	1st	145.7	145.7	145.9	133.3	0.8	0.6	1.8	2.0	2.0	1.9	2016	1er
	2nd	146.0	146.2	144.9	133.4	0.2	0.3	-0.7	-2.5	-3.1	0.5		2ème
	3rd	147.3	148.0	144.2	133.2	0.9	1.2	-0.5	1.9	2.2	1.1		3ème
	4th	147.8	148.9	143.1	132.5	0.3	0.6	-0.8	2.2	2.7	-0.1		4ème
2017	1st	148.8	149.9	143.8	132.3	0.7	0.7	0.5	2.1	2.8	-1.5	2017	1er
	2nd	150.8	152.0	145.2	133.4	1.3	1.4	1.0	3.2	3.8	0.2		2ème

Table 2 Consumer Price Indices by Expenditure Group

Base: 1st Quarter 2000 = 100

Tableau 2 Indice des prix à la consommation par poste de dépense

Base: 1<sup>er</sup> Trimestre 2000 = 100

Year	Quarter	Food Produits alimentaires	Alcoholic drinks and Tobacco Boisson alcoolisée et tabac	Clothing & Footwear Habillement	Housing & Utilities Loyer, eau, et énergie etc.	Household Supplies Mobilier et équipement ménager etc.	Health Santé	Transport	Communication	Recreation Loisir	Education	Miscellaneous Autres	All Groups Indice Global	Année	Trimestre
<b>Vanuatu</b>															
2012	1st	144.8	176.8	98.5	132.1	106.7	101.6	143.8	97.9	134.8	107.8	107.2	138.6	2012	1er
	2nd	145.5	177.6	100.6	130.3	106.8	100.6	143.8	97.8	135.4	107.6	109.9	138.7		2ème
	3rd	145.9	177.7	102.5	129.7	107.7	100.2	143.7	98.0	136.0	107.6	110.0	138.9		3ème
	4th	145.5	177.6	102.7	129.8	107.8	100.2	143.6	98.3	139.4	107.6	112.8	139.0		4ème
2013	1st	146.9	177.7	103.3	132.8	108.7	101.0	143.8	98.7	140.6	110.1	112.0	140.5	2013	1er
	2nd	147.4	178.3	106.0	133.6	107.1	101.1	143.3	98.7	137.8	110.5	114.3	140.8		2ème
	3rd	147.7	178.5	107.3	133.6	107.2	101.3	143.0	98.3	136.6	110.5	114.8	140.9		3ème
	4th	148.4	179.5	107.2	133.6	107.0	101.3	143.0	98.3	133.4	110.5	114.5	141.1		4ème
2014	1st	149.5	179.5	107.5	133.6	107.1	101.4	143.0	98.3	132.1	111.0	114.7	141.5	2014	1er
	2nd	150.1	180.0	109.3	132.6	107.2	101.7	142.8	98.6	134.0	111.1	115.3	141.7		2ème
	3rd	150.2	180.4	109.9	133.1	107.3	102.6	143.7	98.7	133.6	111.2	115.3	142.0		3ème
	4th	150.5	180.3	110.3	134.4	106.8	102.5	148.1	98.6	131.0	111.2	115.2	142.6		4ème
2015	1st	149.7	180.3	110.5	135.6	106.6	102.6	150.5	98.6	131.1	115.1	115.2	142.9	2015	1er
	2nd	168.5	180.1	110.4	135.0	106.2	102.6	150.1	98.6	131.5	115.1	115.2	149.8		2ème
	3rd	152.2	180.8	115.3	135.8	107.6	101.9	153.8	98.6	133.7	115.1	113.6	144.5		3ème
	4th	151.6	181.3	115.9	137.1	107.6	102.0	157.2	98.6	133.7	115.1	112.7	144.7		4ème
2016	1st	155.1	180.9	114.3	133.2	107.6	101.8	158.3	99.0	133.7	120.5	112.6	145.7	2016	1st
	2nd	157.3	180.8	111.8	131.7	107.6	101.8	157.6	98.1	133.7	120.5	112.5	146.0		2ème
	3rd	160.9	180.7	111.1	132.0	107.6	101.8	158.6	98.0	133.7	120.5	112.6	147.3		3ème
	4th	162.7	180.7	110.9	132.2	108.8	101.8	158.8	94.4	132.2	120.5	111.1	147.8		4ème
2017	1st	164.9	181.0	110.4	130.9	108.0	101.9	162.5	94.9	132.7	124.3	110.0	148.8	2017	1st
	2nd	168.8	181.0	110.7	132.0	108.3	102.0	166.6	94.9	131.3	124.3	110.3	150.0		2ème
<b>Port Vila</b>															
2012	1st	145.0	181.8	99.9	127.9	106.6	101.4	145.7	97.6	136.8	106.9	107.4	138.3	2012	1er
	2nd	146.2	182.2	102.1	125.9	106.7	100.5	145.7	97.6	137.4	106.7	109.7	138.5		2ème
	3rd	146.6	182.3	104.1	125.2	107.9	100.1	145.5	97.7	138.0	106.7	109.9	138.7		3ème
	4th	146.2	182.2	104.3	125.2	108.0	100.1	145.4	97.8	142.0	106.7	113.1	138.8		4ème
2013	1st	147.3	182.1	104.6	128.5	109.1	101.0	146.2	98.1	143.3	109.4	111.7	140.3	2013	1er
	2nd	147.6	182.4	106.6	129.3	106.4	101.1	146.5	98.2	140.4	109.9	114.3	140.5		2ème
	3rd	147.9	182.5	108.4	129.3	106.5	101.3	146.1	97.7	139.0	109.9	114.6	140.6		3ème
	4th	148.8	183.8	108.4	129.3	106.4	101.3	146.1	97.7	135.3	109.9	114.6	140.8		4ème
2014	1st	150.0	183.8	108.4	129.3	106.4	101.3	146.1	97.7	134.1	110.5	114.8	141.3	2014	1er
	2nd	150.6	184.3	110.6	128.3	106.3	101.6	145.2	98.1	136.3	110.6	115.5	141.4		2ème
	3rd	150.7	185.2	111.4	128.6	106.4	102.5	146.1	98.1	136.0	110.6	115.2	141.7		3ème
	4th	151.4	185.2	111.7	130.0	106.1	102.5	151.4	98.1	133.0	110.6	115.2	142.5		4ème
2015	1st	150.6	185.3	112.0	131.3	105.7	102.6	153.1	98.1	132.8	115.3	115.2	142.8	2015	1er
	2nd	173.6	185.3	112.0	130.6	105.2	102.6	152.5	98.1	133.1	115.3	114.8	151.0		2ème
	3rd	153.8	186.0	118.0	131.8	107.7	101.8	157.0	98.1	135.6	115.3	114.3	144.8		3ème
	4th	152.9	186.4	118.4	132.9	108.0	101.9	160.7	98.1	135.7	115.3	113.8	145.0		4ème
2016	1st	156.3	186.4	115.9	128.6	108.5	101.9	162.1	98.1	133.7	120.8	113.8	145.7	2016	1er
	2nd	159.9	185.9	112.6	126.7	107.9	101.8	161.0	97.1	133.7	120.8	113.7	146.2		2ème
	3rd	164.8	185.9	111.8	126.9	107.3	101.8	161.4	97.1	133.4	120.8	114.0	148.0		3ème
	4th	167.7	185.9	111.6	127.1	107.4	101.8	162.0	93.2	133.4	120.8	112.7	148.9		4ème
2017	1st	170.1	185.8	110.8	125.9	106.3	101.9	165.8	93.8	134.0	125.6	111.5	149.9	2017	1er
	2nd	174.4	185.8	111.0	127.1	106.6	102.0	170.1	93.8	132.6	125.5	112.2	152.0		2ème
<b>Luganville</b>															
2012	1st	145.3	153.3	93.5	156.6	106.4	103.1	134.0	99.5	123.5	110.9	106.0	139.8	2012	1er
	2nd	144.4	155.4	94.8	156.6	106.5	101.1	134.2	99.3	124.0	110.9	111.2	139.7		2ème
	3rd	144.6	155.6	96.5	156.8	106.3	101.1	134.2	99.5	124.8	110.9	111.1	139.9		3ème
	4th	144.3	155.6	96.7	157.5	106.1	101.1	134.3	101.5	124.8	110.9	110.8	140.0		4ème
2013	1st	146.5	156.0	98.5	158.4	106.1	101.2	131.0	102.0	125.2	112.4	113.6	141.2	2013	1er
	2nd	147.9	157.5	103.9	158.9	110.5	101.2	126.4	102.0	122.9	112.8	114.8	142.3		2ème
	3rd	148.5	158.1	103.5	158.9	110.6	101.2	126.6	101.8	122.9	112.8	115.9	142.6		3ème
	4th	148.3	158.1	103.1	158.9	110.5	101.2	126.6	101.8	122.9	112.8	113.9	142.4		4ème
2014	1st	148.8	158.1	104.3	158.9	110.9	102.3	126.6	101.8	120.6	112.8	113.9	142.7	2014	1er
	2nd	149.4	158.6	104.3	158.9	112.7	102.3	130.5	101.8	120.6	112.8	113.9	143.3		2ème
	3rd	149.7	157.2	104.6	160.7	112.3	103.4	131.2	101.8	119.9	113.2	115.8	143.7		3ème
	4th	148.7	157.2	105.1	160.5	110.6	102.5	130.9	101.5	119.6	113.3	115.4	143.1		4ème
2015	1st	147.7	156.5	105.1	160.7	112.0	103.2	136.3	101.3	121.5	114.4	115.6	143.2	2015	1er
	2nd	150.0	155.7	104.4	161.0	111.6	102.6	137.5	101.5	122.5	114.4	116.7	144.2		2ème
	3rd	147.4	156.3	105.1	159.0	114.2	102.7	136.6	101.5	128.9	114.4	108.9	142.6		3ème
	4th	148.1	157.3	106.3	161.1	114.6	103.2	138.8	101.5	129.0	114.4	105.9	143.4		4ème
2016	1st	151.8	155.9	108.2	160.5	117.7	101.6	137.8	103.9	126.7	119.2	105.0	145.9	2016	1er
	2nd	148.3	156.9	109.0	162.5	117.7	101.6	139.4	103.9	126.7	119.2	105.0	144.9		2ème
	3rd	146.9	156.4	108.9	163.4	116.8	101.6	139.9	103.2	127.0	119.2	103.4	144.2		3ème
	4th	144.6	156.4	108.8	163.4	116.5	101.6	141.8	101.2	125.4	119.2	101.1	143.1		4ème
2017	1st	145.8	157.8	109.2	161.8	117.6	101.7	145.4	101.2	125.0	119.7	100.1	143.8	2017	1er
	2nd	148.5	157.8	110.0	162.0	118.0	102.1	147.8	101.2	124.2	119.7	98.6	145.2		2ème