

STATISTICS UPDATE: MERCHANDISE TRADE

MAY 2014 HIGHLIGHTS

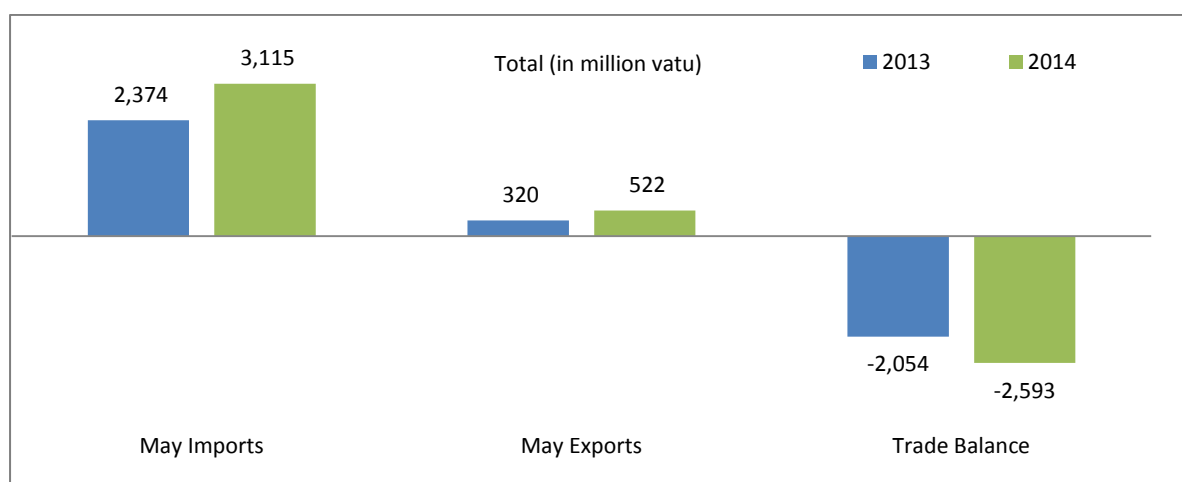


Figure 1: Terms of trade May 2014 and May 2013 (Million Vatu)

Vanuatu's trade deficit (the excess of imports over exports) in May 2014 stood at vatu 2,593 million indicating a deterioration of 538 million vatu compared to May 2013 from vatu 2,054 million. This deterioration was attributable to a 31% or vatu 741 million increase in total imports. Total imports increased from vatu 2,374 million in May 2013 to vatu 3,115 million in May 2014. The trade deficit was mainly driven by the increased imports for home consumption, representing 31% or vatu 800 million increase from vatu 2,359 million to vatu 3,090 million over May 2013.

Domestic exports earnings (excluding re-exports) for May 2014 increased significantly by vatu 202 million over May 2013 from vatu 320 million to vatu 522 million. The increase was attributable to copra, coconut oil and kava exports in May 2014.

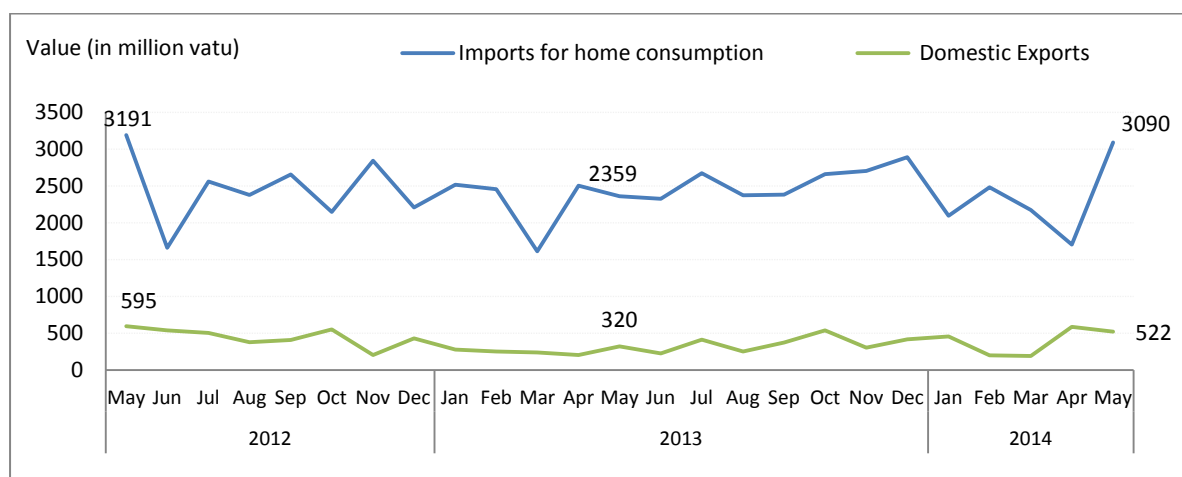


Figure 2: Overseas trade exports and imports for home consumption (million vatu)

EXPORTS

In May 2014, for the main export commodities, copra constituted the largest share in value at 28% followed by coconut oil 23%, kava 19%, cocoa 8%, beef 7%, coconut meal 2%, sawn timber and live fish 1% each and other products 9%, while the rest of the export group made up less than 1% each. Other products comprised of pharmaceuticals, medicaments, scrap metals, personal effects and tamanu oil. (See attached Table 2, Table 3)

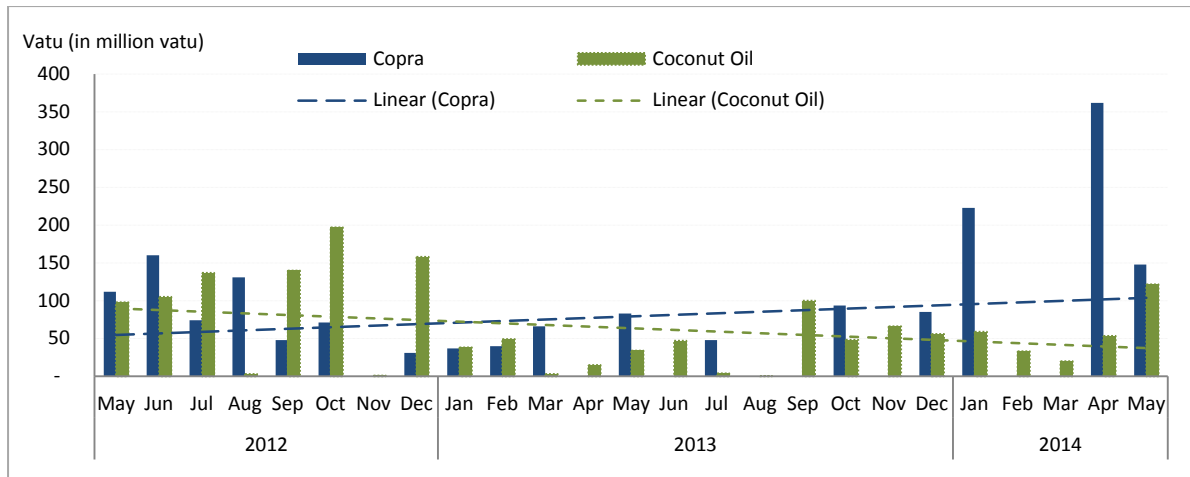


Figure 3: Exports of Coconut Products (million vatu)

In May 2014 coconut products exports recorded significant increases as follows: copra exports increased by 79% or vatu 65 million to vatu 148 million in May 2014 from vatu 83 million in May 2013. Coconut oil exports stood at vatu 122 million in May 2014 showing an increase of 88 million vatu compared to vatu 34 million in May 2013. However coconut meal exports decreased by 20% or vatu 3 million over May 2013.

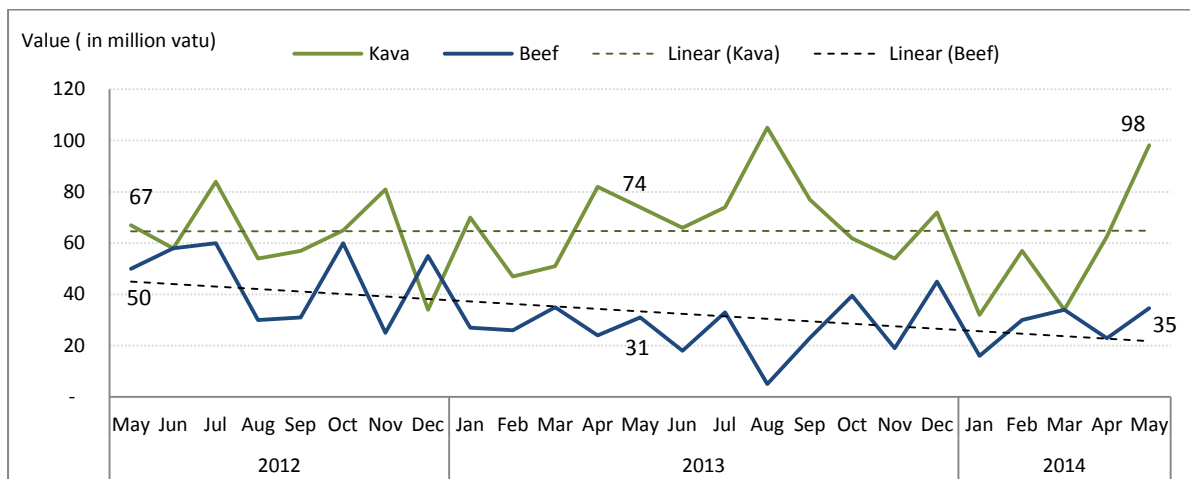


Figure 4: Exports of Kava and Beef Products (million vatu)

Kava exports increased by 32% or vatu 24 million from vatu 74 million in May 2013 to vatu 98 million in May 2014. Beef exports increased slightly by 13% or vatu 4 million in May 2014 over May 2013 from vatu 31 million to vatu 35 million. The bulk of kava exports were to New Caledonia, United States of America and the Solomon Islands, while most of the beef were destined for the Solomon Islands, New Zealand and Japan.

IMPORTS

In terms of imports by commodity groups, mineral fuels registered the largest share in value (C.I.F) at vatu 1,033 million or 33% of the total imports for home consumption, followed by machines and transport equipment at 21 % or vatu 649 million, food and live animals 18%, miscellaneous goods and basic manufactured goods 9% each, chemical products 6% and other products such as, beverages and tobacco, crude materials, goods not classified elsewhere and oils and fats made up less than 5% each of the total imports for home consumption in May 2014 compared to the same period in 2013.

The commodity group which increased the most in May 2014 were imports of mineral fuels representing a vatu 777 million increase compared to vatu 256 million in May 2013, followed by food and live animals at 38% or vatu 149 million and machines and transport equipment by 2% or vatu 15 million over May 2013 respectively. Meanwhile the rest of the commodity group decreased; were crude materials (-34%), basic manufactured goods (-26%), chemical products and oils and fats (-21%) each, goods not classified elsewhere (-20%), beverages and tobacco and miscellaneous goods (11%) each, respectively.

The distribution of imported goods by country grouping was stable over the same period of May 2013. Singapore, Australia, New Zealand and Fiji were the main countries of origin of imports in May 2014.

REVISIONS TO IMPORTS AND EXPORTS STATISTICS

The Vanuatu National Statistics Office receives import and export statistics data on quantity and value from the Department of Customs and Inland Revenue's ASYCUDA merchandise trade processing system. On occasion revisions are made to import and export entries after publication. The Vanuatu National Statistics Office makes every possible effort to check the data and resolve inconsistencies and anomalies with colleagues from the Department of Customs and Inland Revenue prior to publishing. Where revisions are necessary these are highlighted in the statistical tables.

CONCEPTS AND DEFINITIONS

- **Imports for Home Consumption** are goods, materials or articles purchased in other countries and brought into Vanuatu and cleared through customs procedures for home consumption. Imports for home consumption are valued on a C.I.F. (cost, insurance, freight) basis. This means that for each commodity, the value recorded includes the factory price, the cost of packaging, the freight cost from overseas to Vanuatu ports and the insurance.
- **Exports** are expressed in F.O.B. (free on board) prices. It means the total value includes the production cost and the transport cost to the Vanuatu port of export.
- **Imports for re-export** refers to imports destined to be re-exported without having undergone any transformation, or only minor ones. This is especially the case of duty free goods and fuel "imported" into the country and sold to non-resident airline operators or ships.
- **Re-exports** are goods, materials or articles exported in the same condition as they were imported, and imported goods, which have undergone operations such as repair, repacking, or bottling which leave them essentially unchanged before exporting.

ATTACHED:

- Table 1: Summary of Merchandise trade
- Table 2: Principal domestic exports, value
- Table 3: Principal domestic exports, quantity
- Table 4: Imports cleared for home consumption, value

NEXT UPDATE (MONTHLY)

RELEASE DATE

June

14th September 2014

MORE INFORMATION

For statistical enquiries about this topic, please contact:

National Statistics Office: (678) 22110/22111 – email: stats@vanuatu.gov.vu

Website: <http://www.vnso.gov.vu>

NATIONAL STATISTICS OFFICES IN THE PROVINCES

Torba Province
Penama Province
Tafea Province

Sanma Province
Malampa Province



Simil Johnson
Government Statistician

Table 1 Summary of Merchandise Trade
Tableau 1 Récapitulatif du commerce extérieur

In Million Vatu
En millions de Vatu

| Year / Quarter | EXPORTS F.O.B / EXPORTATION FAB | | | | | IMPORTS C.I.F / IMPORTATIONS CAF | | | | | | | Année Trimestre |
|----------------|--|-----------|-------|---------------------|-------------------------------|--|-----------|--------|--|----------------------------------|----------------------------------|----------------------------------|-----------------|
| | Domestic Exports Exportation de produits locaux | | | Re-exports | Total Exports | Imports for Home Consumption / Importations destinées à la Consommation intérieure | | | Imports for Re- exports | Total Imports | Trade Balance | Balance Ratio | |
| | Luganville | Port Vila | Total | Ré- exportations | Total des Exportations (E) | Luganville | Port Vila | Total | Importations pour ré- exportations | Total des Importations (I) | Déficit Commercial (E)-(I) | Taux de Couverture (E)/(I) | |
| | | | | | | | | | | | | | |
| 2011 | 3,816 | 2,196 | 6,012 | - | 6,012 | 4,259 | 22,803 | 27,062 | 193 | 27,256 | (21,243) | 0.2 | 2011 |
| 2012 | 3,305 | 1,768 | 5,072 | - | 5,072 | 4,075 | 22,832 | 26,907 | 547 | 27,454 | (22,382) | 0.2 | 2012 |
| 2013 | 2,233 | 1,419 | 3,653 | - | 3,653 | 4,184 | 25,262 | 29,446 | 207 | 29,653 | (26,000) | 0.1 | 2013 |
| 2012 1st | 761 | 384 | 1,145 | - | 1,145 | 910 | 4,661 | 5,571 | 110 | 5,681 | (4,536) | 0.2 | 2012 1er |
| 2nd | 937 | 513 | 1,451 | - | 1,451 | 942 | 5,610 | 6,553 | 110 | 6,663 | (5,212) | 0.2 | 2ème |
| 3rd | 887 | 403 | 1,290 | - | 1,290 | 1,257 | 6,331 | 7,588 | 279 | 7,867 | (6,577) | 0.2 | 3ème |
| 4th | 719 | 467 | 1,186 | - | 1,186 | 966 | 6,230 | 7,196 | 48 | 7,244 | (6,057) | 0.2 | 4ème |
| 2013 1st | 476 | 287 | 764 | - | 764 | 1,056 | 5,531 | 6,587 | 35 | 6,622 | (5,858) | 0.1 | 2013 1er |
| 2nd | 498 | 251 | 749 | - | 749 | 1,041 | 6,145 | 7,186 | 38 | 7,224 | (6,475) | 0.1 | 2ème |
| 3rd | 597 | 425 | 1,022 | - | 1,022 | 1,014 | 6,408 | 7,422 | 58 | 7,480 | (6,459) | 0.1 | 3ème |
| 4th | 663 | 455 | 1,118 | - | 1,118 | 1,073 | 7,178 | 8,251 | 75 | 8,327 | (7,209) | 0.1 | 4ème |
| 2014 1st | 504 | 344 | 848 | - | 848 | 998 | 5,747 | 6,745 | 15 | 6,760 | (5,911) | 0.1 | 2014 1er |
| 2013 Jan | 177 | 98 | 276 | - | 276 | 365 | 2,153 | 2,518 | 16 | 2,534 | (2,258) | 0.1 | 2013 Jan |
| Feb | 158 | 93 | 251 | - | 251 | 456 | 2,001 | 2,457 | 5 | 2,461 | (2,210) | 0.1 | Fév |
| Mar | 141 | 96 | 237 | - | 237 | 235 | 1,378 | 1,613 | 14 | 1,627 | (1,390) | 0.1 | Mars |
| Apr | 89 | 115 | 204 | - | 204 | 336 | 2,167 | 2,503 | 11 | 2,514 | (2,309) | 0.1 | Avr |
| May | 242 | 78 | 320 | - | 320 | 430 | 1,929 | 2,359 | 15 | 2,374 | (2,054) | 0.1 | Mai |
| Jun | 167 | 58 | 225 | - | 225 | 276 | 2,049 | 2,325 | 12 | 2,337 | (2,112) | 0.1 | Juin |
| Jul | 179 | 219 | 398 | - | 398 | 209 | 2,462 | 2,671 | 5 | 2,676 | (2,278) | 0.1 | Juil |
| Aug | 171 | 79 | 250 | - | 250 | 382 | 1,989 | 2,371 | 33 | 2,404 | (2,154) | 0.1 | Août |
| Sep | 247 | 127 | 373 | - | 373 | 424 | 1,956 | 2,380 | 21 | 2,401 | (2,027) | 0.2 | Sep |
| Oct | 250 | 144 | 395 | - | 395 | 308 | 2,351 | 2,659 | 12 | 2,671 | (2,276) | 0.1 | Oct |
| Nov | 145 | 161 | 306 | - | 306 | 345 | 2,358 | 2,702 | 52 | 2,754 | (2,448) | 0.1 | Nov |
| Dec | 267 | 150 | 417 | - | 417 | 421 | 2,470 | 2,890 | 12 | 2,902 | (2,485) | 0.1 | Déc |
| 2014 Jan | 337 | 121 | 458 | - | 458 | 225 | 1,868 | 2,093 | 0 | 2,093 | (1,635) | 0.2 | 2014 Jan |
| Feb | 94 | 105 | 199 | - | 199 | 495 | 1,984 | 2,480 | 6 | 2,485 | (2,286) | 0.1 | Feb |
| Mar | 73 | 118 | 191 | - | 191 | 277 | 1,895 | 2,172 | 9 | 2,181 | (1,990) | 0.1 | Mars |
| Apr | 488 | 98 | 586 | - | 586 | 429 | 1,273 | 1,703 | 7 | 1,710 | (1,125) | 0.3 | Avr |
| May | 420 | 102 | 522 | - | 522 | 306 | 2,785 | 3,090 | 24 | 3,115 | (2,593) | 0.2 | Mai |

Source: Department of Customs and Inland Revenue / Service des Douanes et Contributions Indirectes

Table 2 Principal Domestic Exports, in Value
Tableau 2 Principales exportations de produits locaux, en valeur

In million Vatu
En millions de Vatu

| Year Quarter | Copra | Coconut oil | Beef veal | Cocoa | Shell | Sawn Timber | Cowhides | Kava | Coffee | Vanilla | Coconut Meal | Live Fish | Alcoholic Drink | Fish | Other products | Total | Année Trimestre |
|--------------|--------|---------------|---------------|-------|-------------|-------------|---------------|------|--------|---------|------------------|----------------|----------------------|---------|-----------------|-------|-----------------|
| | Coprah | Huile de coco | Viande bovine | Cacao | Coquillages | Bois débité | Cuir et peaux | | Café | Vanille | Farine de coprah | Poisson vivant | Boissons Alcoolisées | Poisson | Autres produits | | |
| 2011 | 1,065 | 1,592 | 516 | 247 | 30 | 65 | 29 | 762 | 18 | 5 | 87 | 166 | 175 | 359 | 898 | 6,012 | 2011 |
| 2012 | 1,087 | 1,162 | 518 | 258 | 27 | 42 | 27 | 661 | 3 | 11 | 92 | 136 | 161 | 185 | 702 | 5,072 | 2012 |
| 2013 | 452 | 459 | 326 | 294 | 30 | 165 | 28 | 834 | 6 | 7 | 143 | 88 | 116 | 139 | 566 | 3,653 | 2013 |
| 2012 1st | 434 | 208 | 123 | 10 | 0 | 8 | 7 | 97 | 0 | 3 | 14 | 48 | 30 | 29 | 133 | 1,145 | 2012 1er |
| 2nd | 298 | 317 | 135 | 70 | 1 | 20 | 7 | 189 | 0 | 5 | 26 | 56 | 21 | 69 | 237 | 1,451 | 2ème |
| 3rd | 253 | 280 | 120 | 97 | 14 | 5 | 6 | 195 | 2 | 1 | 28 | 17 | 60 | 74 | 138 | 1,290 | 3ème |
| 4th | 102 | 356 | 140 | 81 | 12 | 8 | 7 | 179 | 0 | 2 | 23 | 16 | 51 | 13 | 194 | 1,186 | 4ème |
| 2013 1st | 143 | 90 | 89 | 23 | 6 | 15 | 8 | 168 | 3 | 2 | 25 | 20 | 36 | 55 | 83 | 764 | 2013 1er |
| 2nd | 83 | 95 | 73 | 98 | 8 | 10 | 4 | 223 | 1 | 1 | 17 | 25 | 21 | 33 | 57 | 749 | 2ème |
| 3rd | 48 | 103 | 61 | 123 | 7 | 47 | 10 | 255 | 1 | 1 | 62 | 20 | 29 | 33 | 221 | 1,022 | 3ème |
| 4th | 179 | 170 | 104 | 51 | 9 | 92 | 5 | 188 | 1 | 3 | 40 | 22 | 30 | 19 | 206 | 1,118 | 4ème |
| 2014 1st | 223 | 112 | 80 | 9 | 19 | 4 | 5 | 124 | 1 | 1 | 15 | 61 | 17 | 8 | 168 | 848 | 2014 1er |
| 2013 Jan | 37 | 38 | 27 | 18 | - | 6 | 3 | 70 | 3 | - | 7 | 4 | 11 | 26 | 25 | 276 | 2013 Jan |
| Feb | 40 | 49 | 26 | 2 | 6 | 2 | 2 | 47 | 0 | 1 | 10 | 10 | 19 | 5 | 31 | 251 | Fév |
| Mar | 66 | 3 | 35 | 3 | - | 6 | 3 | 51 | - | 1 | 8 | 6 | 6 | 23 | 27 | 237 | Mars |
| Apr | - | 15 | 24 | 13 | - | 6 | 2 | 82 | 0 | - | 6 | 13 | 7 | 7 | 29 | 204 | Avr |
| May | 83 | 34 | 31 | 31 | 8 | 4 | - | 74 | 1 | 1 | 12 | 5 | 7 | 16 | 13 | 320 | Mai |
| Jun | - | 47 | 18 | 54 | - | - | 2 | 66 | - | 0 | - | 7 | 8 | 9 | 14 | 225 | Juin |
| Jul | 48 | 4 | 33 | 47 | 7 | 1 | 5 | 74 | - | 0 | 5 | 6 | 7 | 29 | 131 | 398 | Juil |
| Aug | - | 0 | 5 | 41 | - | 2 | 1 | 105 | 1 | 1 | 33 | 7 | 8 | 2 | 47 | 251 | Août |
| Sep | - | 100 | 23 | 35 | - | 44 | 4 | 77 | - | 0 | 24 | 8 | 14 | 3 | 43 | 373 | Sep |
| Oct | 93 | 48 | 39 | 18 | 9 | 21 | 1 | 62 | - | 1 | 13 | 5 | 9 | 2 | 73 | 395 | Oct |
| Nov | - | 66 | 19 | 2 | 0 | 23 | 2 | 54 | 1 | 1 | 12 | 7 | 12 | 10 | 96 | 306 | Nov |
| Dec | 85 | 56 | 45 | 30 | - | 48 | 2 | 72 | 1 | 0 | 15 | 10 | 10 | 7 | 37 | 417 | Déc |
| 2014 Jan | 223 | 59 | 16 | 6 | - | 1 | 3 | 32 | - | 1 | 7 | 40 | 17 | 4 | 48 | 458 | 2014 Jan |
| Feb | - | 33 | 30 | 3 | 19 | 0 | 2 | 57 | - | - | 2 | 10 | - | 1 | 41 | 199 | Fev |
| Mar | - | 20 | 34 | - | - | 3 | - | 34 | 1 | 0 | 6 | 10 | - | 3 | 79 | 191 | Mars |
| Apr | 362 | 53 | 23 | 5 | - | 10 | 3 | 63 | - | 0 | 8 | 9 | - | 1 | 49 | 586 | Avril |
| May | 148 | 122 | 35 | 44 | 0 | 7 | 2 | 98 | 0 | 0 | 9 | 8 | - | - | 49 | 522 | Mai |

Source: Department of Customs and Inland Revenue / Service des Douanes et Contributions Indirectes (r) revised other products data

Table 3 Principal Domestic Exports, in Quantity
Tableau 3 Principales exportations, en quantité

In tonnes
En tonnes

| Year / Quarter | Copra | Coconut oil | Beef veal | Cocoa | Shell | Cowhides | Kava | Coffee | Vanilla | Coconut Meal | Live Fish | Fish | Année | Trimestre |
|----------------|--------|---------------|---------------|-------|-------------|----------------|------|--------|---------|------------------|----------------|---------|-------|-----------|
| | Coprah | Huile de coco | Viande bovine | Cacao | Coquillages | Cuirs et peaux | | Café | Vanille | Farine de coprah | Poisson vivant | Poisson | | |
| 2011 | 13,596 | 12,000 | 1,105 | 1,068 | 10 | 336 | 734 | 27 | 1 | 6,917 | 205 | 2,743 | 2011 | |
| 2012 | 16,336 | 10,011 | 1,031 | 1,415 | 9 | 387 | 643 | 3 | 3 | 6,082 | 134 | 682 | 2012 | |
| 2013 | 12,508 | 5,535 | 703 | 1,649 | 10 | 402 | 819 | 6 | 2 | 7,692 | 77 | 391 | 2013 | |
| 2012 1st | 6,188 | 1,674 | 236 | 40 | 0 | 80 | 99 | 1 | 1 | 1,079 | 39 | 213 | 2012 | 1er |
| 2nd | 4,588 | 2,696 | 284 | 381 | 0 | 83 | 184 | 0 | 2 | 1,628 | 56 | 196 | | 2ème |
| 3rd | 3,791 | 2,423 | 240 | 539 | 4 | 105 | 187 | 2 | 0 | 1,708 | 18 | 230 | | 3ème |
| 4th | 1,769 | 3,218 | 271 | 454 | 4 | 119 | 173 | 0 | 1 | 1,667 | 21 | 43 | | 4ème |
| 2013 1st | 4,022 | 838 | 205 | 136 | 2 | 114 | 158 | 3 | 1 | 1,660 | 13 | 150 | 2013 | 1er |
| 2nd | 2,438 | 1,529 | 142 | 491 | 3 | 72 | 223 | 1 | 0 | 1,162 | 21 | 84 | | 2ème |
| 3rd | 1,326 | 1,016 | 129 | 724 | 2 | 120 | 252 | 1 | 0 | 2,966 | 25 | 105 | | 3ème |
| 4th | 4,722 | 2,152 | 227 | 298 | 3 | 96 | 186 | 1 | 1 | 1,904 | 18 | 52 | | 4ème |
| 2014 1st | 4,123 | 1,524 | 183 | 49 | 5 | 61 | 119 | 1 | 0 | 515 | 54 | 25 | 2014 | 1er |
| 2013 Jan | 1,274 | 350 | 50 | 113 | - | 44 | 68 | 3 | - | 491 | 3 | 100 | 2013 | Jan |
| Feb | 1,193 | 486 | 69 | 9 | 2 | 29 | 44 | 0 | 0 | 709 | 6 | 14 | | Fév |
| Mar | 1,555 | 1 | 86 | 14 | - | 41 | 46 | - | 0 | 459 | 4 | 36 | | Mars |
| Apr | - | 279 | 45 | 80 | - | 41 | 82 | 0 | - | 358 | 10 | 19 | | Avr |
| May | 2,438 | 260 | 55 | 187 | 3 | - | 75 | 1 | 0 | 804 | 6 | 31 | | Mai |
| Jun | - | 990 | 42 | 224 | - | 31 | 66 | - | - | - | 4 | 34 | | Juin |
| Jul | 1,326 | 28 | 72 | 252 | 2 | 62 | 73 | - | 0 | 322 | 4 | 92 | | Juil |
| Aug | - | 4 | 15 | 226 | - | 18 | 104 | 1 | 0 | 1,368 | 6 | 6 | | Août |
| Sep | - | 984 | 42 | 246 | - | 41 | 75 | - | 0 | 1,276 | 14 | 7 | | Sep |
| Oct | 2,542 | 481 | 86 | 115 | 3 | 19 | 62 | - | 0 | 573 | 6 | 9 | | Oct |
| Nov | - | 671 | 47 | 17 | 0 | 39 | 54 | 1 | 0 | 633 | 6 | 24 | | Nov |
| Dec | 2,180 | 1,000 | 94 | 167 | - | 37 | 70 | 1 | 0 | 698 | 7 | 20 | | Déc |
| 2014 Jan | 4,123 | 837 | 42 | 33 | - | 40 | 36 | - | 0 | 117 | 39 | 10 | 2014 | Jan |
| Feb | - | 536 | 68 | 16 | 5 | 21 | 55 | - | - | 123 | 9 | 5 | | Fév |
| Mar | - | 151 | 73 | - | - | - | 28 | 1 | 0 | 275 | 7 | 10 | | Mars |
| Apr | 5,551 | 851 | 52 | 28 | - | 49 | 61 | - | 0 | 419 | 6 | 2 | | Avril |
| May | 2,273 | 697 | 85 | 187 | 16 | 21 | 96 | 0 | 0 | 487 | 6 | - | | Mai |

Source: Department of Customs and Inland Revenue / Service des Douanes et Contributions Indirectes

Table 4 Imports Cleared for Home Consumption, in Value

Tableau 4 Importations destinées à la consommation intérieure par produit selon la Classification type pour le commerce international, en valeur

**In million Vatu
En million de Vatu**

| Year | Quarter | Food & Live Animals | Beverages & Tobacco | Crude Materials Except Fuels | Mineral Fuels | Oils, Fats & Waxes | Chemical Products | Basic Manufactured Products | Machines & Transport Equipment | Miscellaneous Manufactured Goods | Goods N.E.C. | Total | Année | Trimestre |
|------|---------|--|---------------------|----------------------------------|-----------------|--|--------------------|-----------------------------|-------------------------------------|----------------------------------|---------------------------------|--------|-------|-----------|
| | | Produits alimentaires et animaux vivants | Boissons et tabacs | Matières brutes non combustibles | Energie fossile | Huiles et graisses animales et végétales | Produits chimiques | Produits manufacturés | Machines et matériels de transports | Produits manufacturés divers | Articles et transactions, N.C.A | | | |
| 2011 | | 5,537 | 1,038 | 379 | 4,835 | 129 | 2,855 | 3,566 | 5,542 | 2,820 | 362 | 27,062 | 2011 | |
| 2012 | | 5,307 | 1,153 | 432 | 4,621 | 141 | 2,809 | 3,590 | 5,964 | 2,575 | 314 | 26,907 | 2012 | |
| 2013 | | 6,068 | 1,146 | 510 | 4,599 | 124 | 2,685 | 3,950 | 6,881 | 3,165 | 319 | 29,446 | 2013 | |
| 2012 | 1st | 1,103 | 303 | 79 | 855 | 41 | 630 | 736 | 1,243 | 494 | 86 | 5,571 | 2012 | 1er |
| | 2nd | 1,059 | 225 | 90 | 1,442 | 20 | 647 | 804 | 1,585 | 607 | 74 | 6,553 | | 2ème |
| | 3rd | 1,552 | 257 | 128 | 1,471 | 44 | 675 | 1,087 | 1,615 | 684 | 75 | 7,588 | | 3ème |
| | 4th | 1,594 | 367 | 136 | 853 | 36 | 858 | 962 | 1,521 | 791 | 79 | 7,196 | | 4ème |
| 2013 | 1st | 1,394 | 236 | 88 | 1,204 | 24 | 548 | 1,006 | 1,332 | 657 | 100 | 6,587 | 2013 | 1er |
| | 2nd | 1,349 | 315 | 154 | 1,503 | 29 | 689 | 879 | 1,457 | 731 | 80 | 7,186 | | 2ème |
| | 3rd | 1,459 | 293 | 126 | 1,210 | 24 | 703 | 1,039 | 1,745 | 751 | 74 | 7,422 | | 3ème |
| | 4th | 1,867 | 302 | 142 | 683 | 47 | 745 | 1,027 | 2,347 | 1,026 | 65 | 8,251 | | 4ème |
| 2014 | 1st | 1,065 | 264 | 81 | 1,666 | 15 | 565 | 895 | 1,499 | 618 | 76 | 6,745 | 2014 | 1er |
| 2013 | Jan | 601 | 71 | 35 | 401 | 10 | 201 | 350 | 568 | 260 | 20 | 2,518 | 2013 | Jan |
| | Feb | 474 | 67 | 31 | 783 | 7 | 189 | 339 | 329 | 175 | 63 | 2,456 | | Fev |
| | Mar | 319 | 98 | 22 | 20 | 7 | 158 | 316 | 435 | 221 | 17 | 1,613 | | Mars |
| | Apr | 525 | 129 | 57 | 711 | 12 | 231 | 246 | 370 | 202 | 20 | 2,503 | | Avril |
| | May | 396 | 84 | 46 | 256 | 11 | 252 | 355 | 634 | 304 | 21 | 2,359 | | Mai |
| | Jun | 428 | 102 | 51 | 537 | 6 | 206 | 278 | 453 | 225 | 39 | 2,325 | | Juin |
| | Jul | 470 | 87 | 56 | 522 | 6 | 225 | 339 | 654 | 277 | 33 | 2,671 | | Juil |
| | Aug | 623 | 99 | 29 | 64 | 9 | 263 | 400 | 611 | 262 | 12 | 2,371 | | Août |
| | Sep | 366 | 106 | 40 | 624 | 9 | 215 | 300 | 479 | 212 | 29 | 2,380 | | Sep |
| | Oct | 542 | 63 | 49 | 201 | 20 | 280 | 353 | 770 | 361 | 20 | 2,659 | | Oct |
| | Nov | 608 | 106 | 53 | 441 | 14 | 248 | 276 | 646 | 283 | 28 | 2,702 | | Nov |
| | Dec | 717 | 133 | 41 | 40 | 14 | 218 | 398 | 931 | 382 | 16 | 2,890 | | Dec |
| 2014 | Jan | 363 | 69 | 21 | 513 | 4 | 173 | 320 | 420 | 200 | 11 | 2,093 | 2014 | Jan |
| | Feb | 326 | 88 | 21 | 750 | 7 | 210 | 291 | 587 | 182 | 18 | 2,480 | | Fev |
| | Mar | 376 | 108 | 39 | 403 | 4 | 183 | 284 | 492 | 236 | 48 | 2,172 | | Mars |
| | Apr | 336 | 67 | 41 | 225 | 9 | 144 | 173 | 467 | 233 | 9 | 1,703 | | Avril |
| | May | 544 | 75 | 30 | 1,033 | 9 | 198 | 264 | 649 | 271 | 17 | 3,090 | | Mai |

Source: Department of Customs and Inland Revenue / Service des Douanes et Contributions Indirectes