



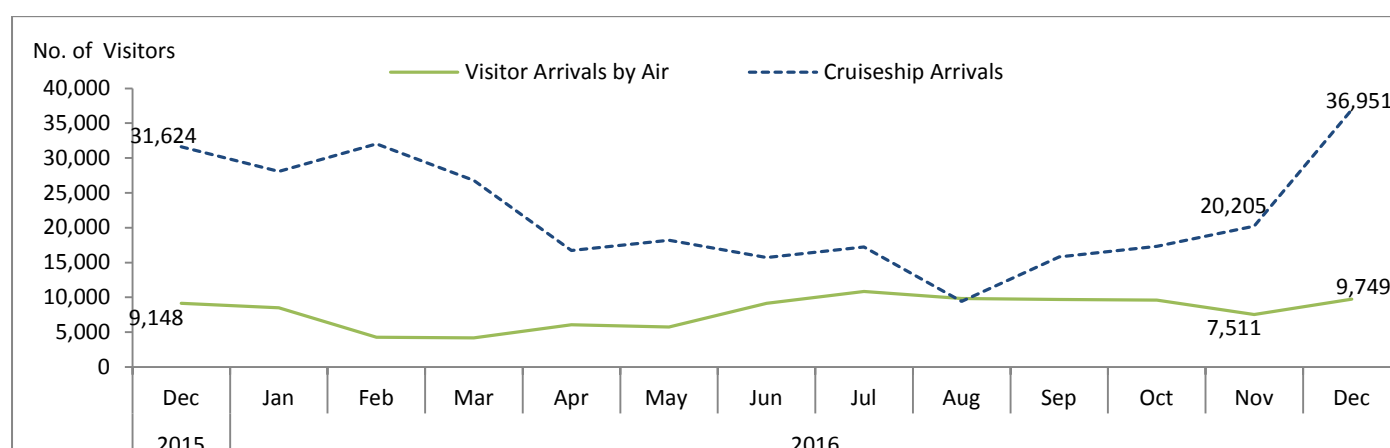
## STATISTICS UPDATE: INTERNATIONAL ARRIVAL STATISTICS

### DECEMBER 2016 HIGHLIGHTS

RELEASE DATE: 14<sup>th</sup> of March 2017

#### OVERVIEW

**Fig 1: International Visitor Arrivals: December 2015 to December 2016**



- International visitor's arrivals by air made up 21 % of total visitors to Vanuatu, in December 2016. Visitors by air increase over December 2015 and also increase over previous month.
- Visitor arrivals by air stood at 9,749. It increased by 7% over December 2015, it also increased by 30% over the previous month. The increased was reflected by the number of visitors who arrived for holiday.
- In December 2016, 16% or 1 in 6 visitors by air also travelled to outer islands.
- Cruise ship or day visitors made up 79% of total international visitors to Vanuatu in December 2016. The day visitors stood at 36,951 visitors. It Increased by 17% over same month in previous year and increased by 83% over the previous month.

#### CONTENTS

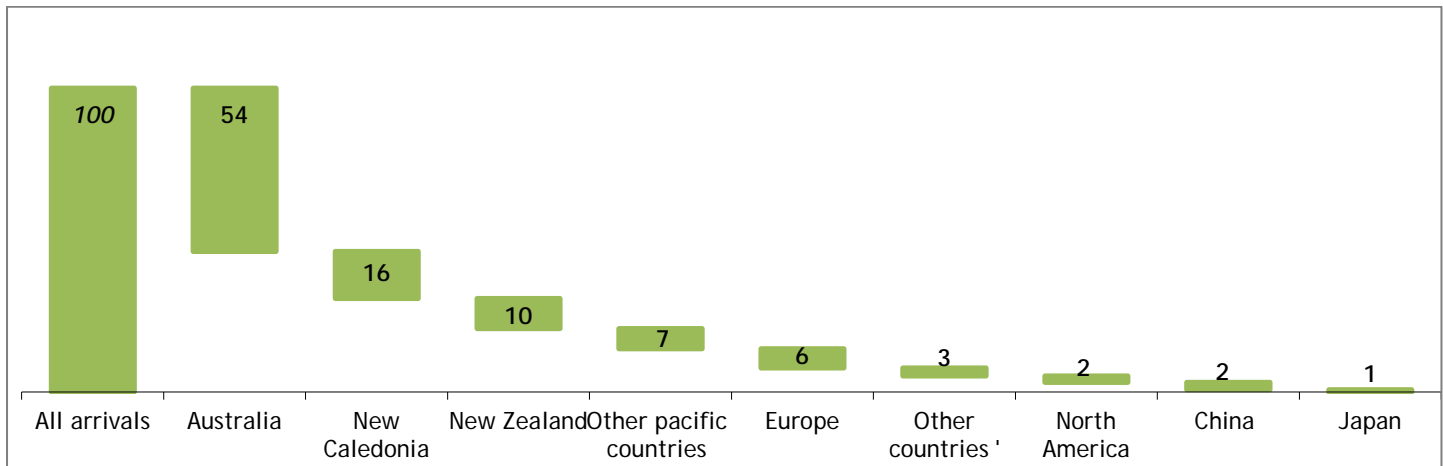
	Page #
<b>HIGHLIGHTS</b>	<b>1-4</b>
<b>ANNEX 1-2</b>	<b>6</b>
<b>TABLES:</b>	
<b>1: Summary of Overseas migration</b>	<b>7</b>
<b>2: Visitors by Purpose of Visit</b>	<b>8</b>
<b>3: Visitors by Country of Usual Residence</b>	<b>9</b>
<b>4: Resident arrivals by Nationality</b>	<b>10</b>
<b>5: Visitors by air, Intended length of stay</b>	<b>11</b>
<b>6: Visitors by air, Average age</b>	<b>12</b>
<b>7: Visitors to outer islands</b>	<b>13</b>

PURPOSE OF VISIT FOR VISITORS ARRIVING BY AIR

- Holiday visitors accounted for 79% of visitors arriving by air in December 2016. Visitors who arrived to visit friends and relatives at 10%, visitors arrived for business, meeting or conference at 7%, visitors who arrived for educations and sports at 4% and visitors on transit made up 1%.

COUNTRY OF USUAL RESIDENCE FOR VISITORS ARRIVING BY AIR

Fig 2: Percentage share of visitors in December 2016 by Country of Usual Residence



- Australian visitors continued to make up the highest number of visitors arriving by air at 54%, followed by New Caledonians visitors at 16%, New Zealanders at 10%, other pacific countries at 7%, Europeans visitors at 6%, other countries at 3%, North Americans and Chinese visitors at 2% each; and Japanese visitors at 1%.

AVERAGE INTENDED LENGTH OF STAY FOR VISITORS ARRIVING BY AIR

- In December 2016, international visitor's arrivals spent an average of 10 days. It decreased by 1 day over December 2015 and it also decreased by 1 day over the previous month.

AVERAGE AGE FOR VISITORS ARRIVING BY AIR

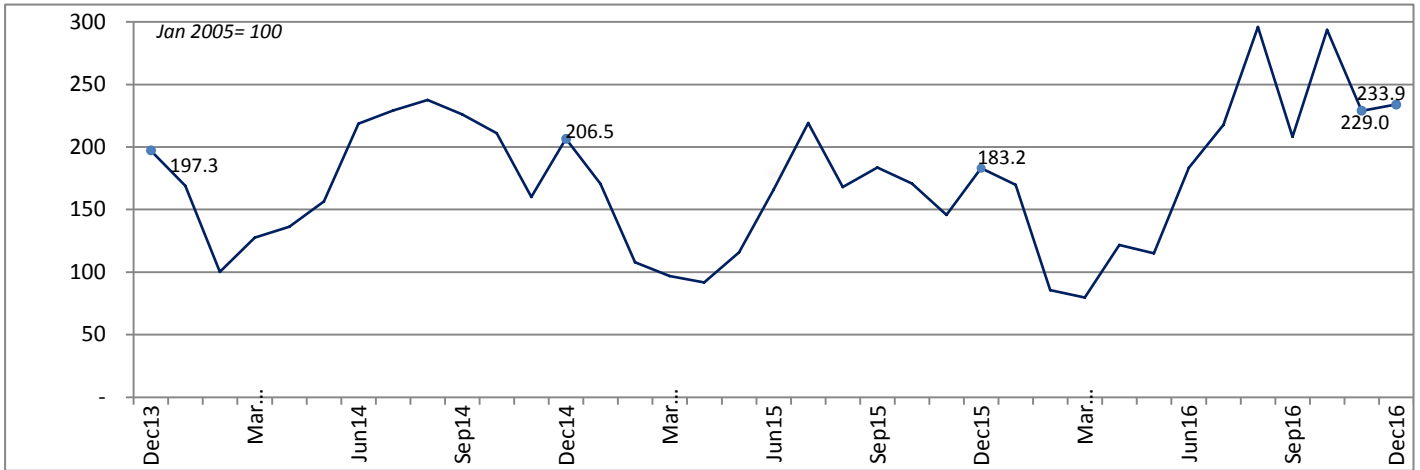
- The average age of visitors was 40 years in December 2016. The visitor's average age increased by 2 years over December 2016, however, it decreased by 1 day over the previous month.

VISITOR ARRIVAL INDEX<sup>1</sup>

Figure 3 shows the total number of visitor arrivals and arrivals from Australia, New Zealand, New Caledonia and all other countries combined to show trends in arrivals, with the number of visitors.

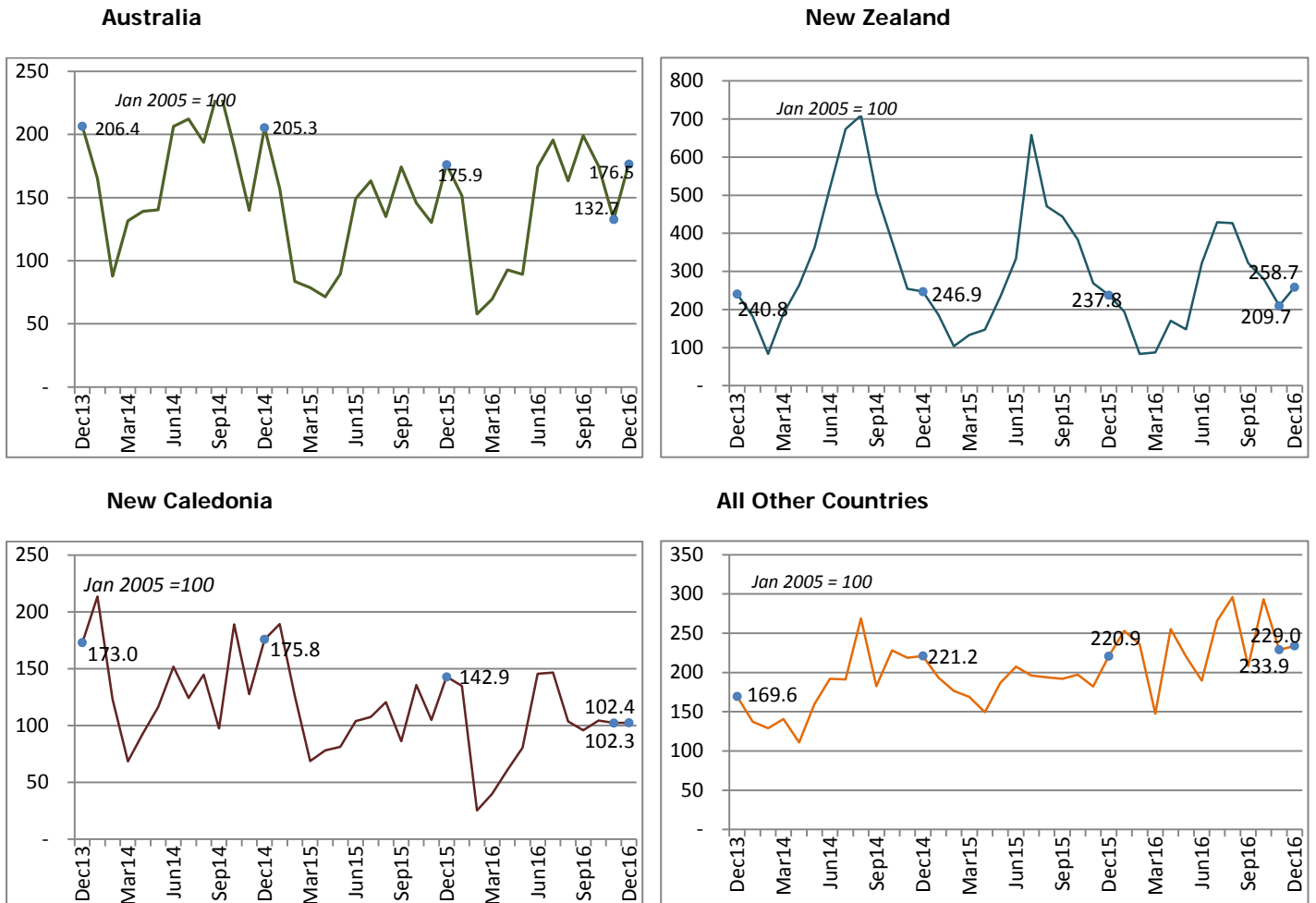
<sup>1</sup> Tourism in Vanuatu is seasonal, and it is difficult to analyse the changes in international arrivals and country of residence by looking at the monthly number of arrivals based on an index value of 100 in January 2005. This index allows analysis over time of the real increases and decreases in international air arrivals.

**Fig 3: Index of Total Air Visitor Arrivals, December 2013 to December 2016 (January 2005 = 100)**



- In December 2016, Index figures for all visitors' arrivals increased by 7% over December 2015. (Fig.3).

**Fig 4: Index of Visitor Arrivals and Country of Usual Residence, December 2013 to December 2016 (January 2005 = 100)**



Note: the vertical axis scale varies in each country chart.

- The New Caledonians market increased in index values at 35% in December 2016, followed by New Zealanders market increased by 9% and Australian market increased by 0.3% over December 2016.

## SUMMARY OF VISITORS TO OUTER ISLANDS

The visitors to outer islands in December 2016 are highlighted on Annex 1 and Annex 2 attached (page5 and page6).

## DATA SOURCE

All International arrival statistics by air provided in the report is sourced from completed Arrival and Departure cards at the Department of Immigration. Cruise ship figures are also sourced from the Department of Immigration.

## NEXT UPDATE (MONTHLY)

January 2017

## RELEASE DATE

07 April 2017

## PROVINCIAL STATISTICS OFFICES

Millennium Building  
Luganville, Santo  
SANMA PROVINCE

PO Box 22  
Lakatoro, Malekula  
MALAMPA PROVINCE




**Mr Simil Johnson**  
Government Statistician

SUMMARY OF VISITORS TO OUTER ISLANDS<sup>2</sup> (SEE TABLE 7)

Summary of Indicators

- In December 2016, Tafea Province received 38% of visitors arriving by air, followed by Sanma Province at 28%.
- Visitors travelling to outer islands spent an average of 6 days.

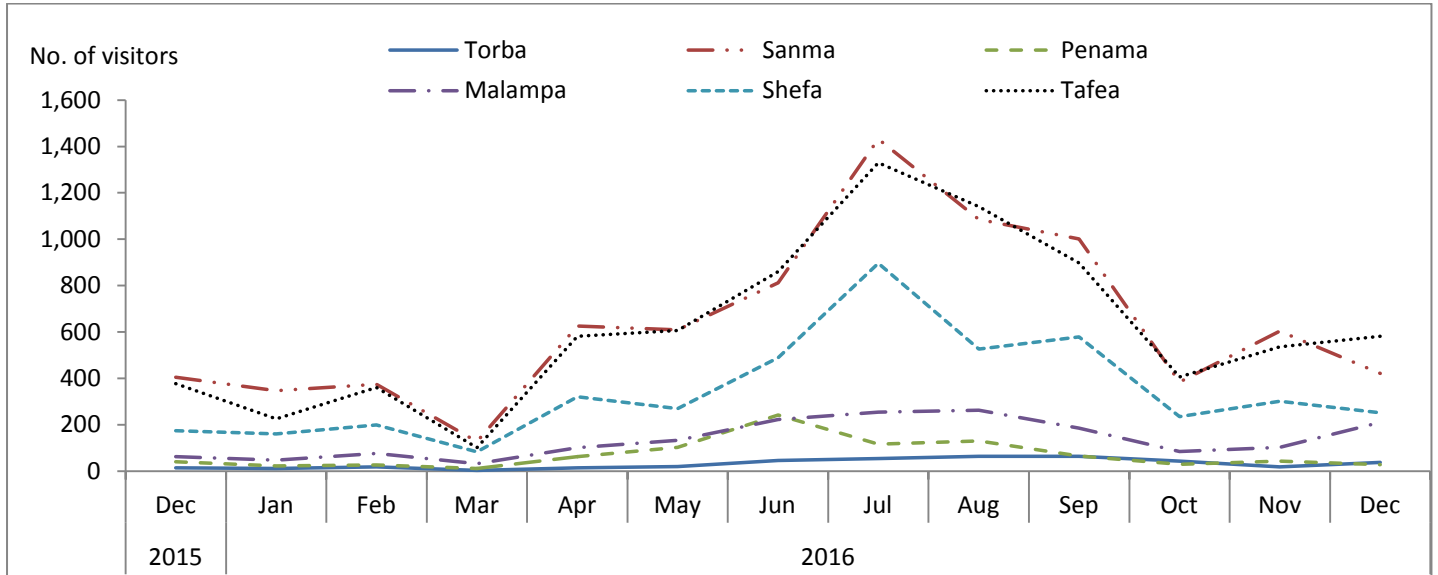


Figure 1: Summary of visitors to other province, December 2015 to December 2016

\*Excludes Efate Island

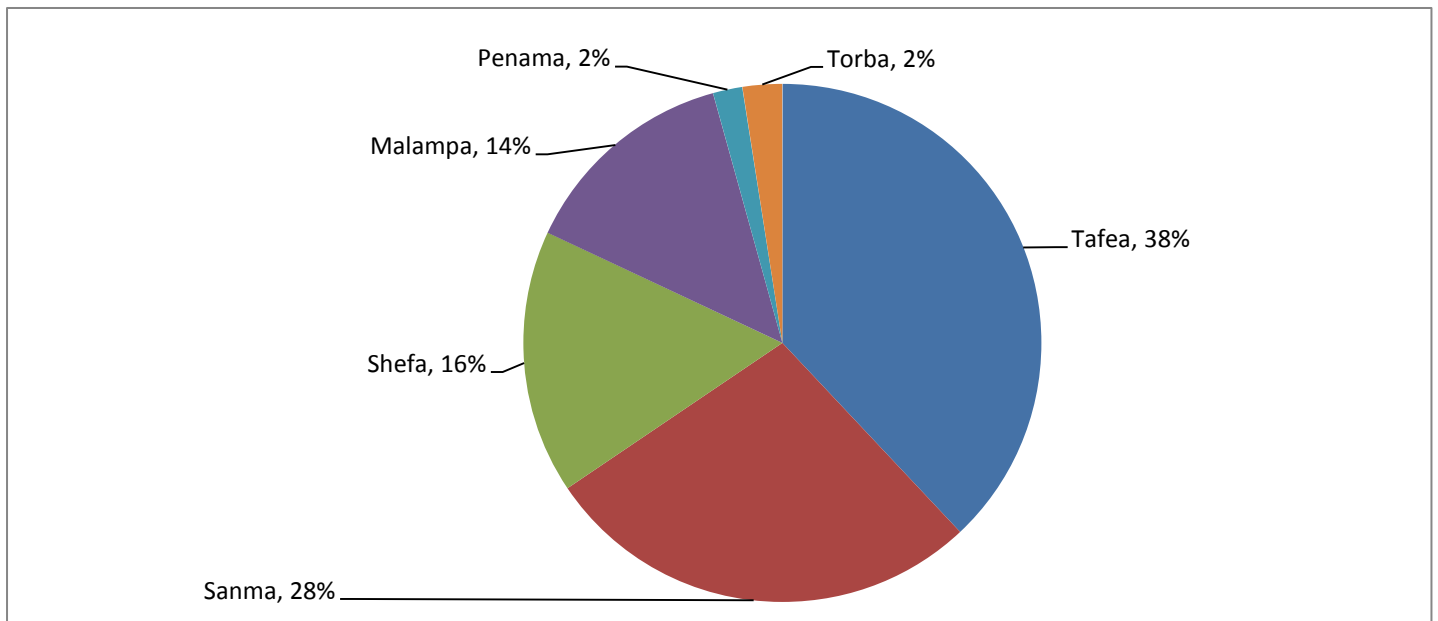


Figure 2: Proportion of visitors to other provinces, December 2016

\*Excludes Efate Island

<sup>2</sup> Data on visitors travelling to outer islands is only available from May 2014

## ANNEX 1 –VISITORS TO OUTER ISLANDS, BY PROVINCE

Table 1: Visitors to outer islands, by province

Year	Month	Province						TOTAL
		Torba	Sanma	Penama	Malampa	Shefa*	Tafea	
2015	Dec	15	405	40	62	174	378	1,074
2016	Jan	12	347	22	47	161	225	814
	Feb	18	374	27	76	200	361	1,056
	Mar	3	83	12	32	83	101	359
	Apr	15	626	62	101	321	581	1,706
	May	20	609	103	133	270	606	1,741
	Jun	46	812	242	223	489	861	2,673
	Jul	55	1,432	116	254	896	1,330	4,083
	Aug	64	1,085	130	263	527	1,140	3,209
	Sep	64	1,001	65	185	579	898	2,792
	Oct	44	384	29	85	235	407	1,184
	Nov	18	604	43	103	301	536	1,605
	Dec	38	422	28	210	252	582	1,532

Source: Department of Immigration

\*Excludes Efate Island

Table 2: The average length of stay (nights) for visitors travelling to outer islands, by province

Year	Month	Province						TOTAL
		Torba	Sanma	Penama	Malampa	Shefa*	Tafea	
2015	Dec	6.5	9.7	5.3	6.6	3.9	4.9	6.2
2016	Jan	9.3	7.2	21.2	5.2	3.8	3.7	8.4
	Feb	7.8	8.2	15.2	8.8	4.2	3.4	7.9
	Mar	10.3	5.0	4.4	2.9	4.6	3.8	5.2
	Apr	50.6	6.3	7.3	9.6	6.5	3.8	14.0
	May	2.3	6.3	2.5	8.0	4.7	3.4	4.6
	Jun	4.1	7.2	3.2	6.2	3.7	4.2	4.8
	Jul	4.9	5.8	5.5	6.4	2.8	3.9	4.9
	Aug	4.2	7.5	6.4	10.1	4.3	4.2	4.2
	Sep	4.2	7.4	5.0	5.9	4.0	4.0	5.1
	Oct	4.2	16.1	9.4	6.0	5.4	3.4	7.5
	Nov	4.4	6.2	8.3	7.8	3.9	4.2	5.8
	Dec	10.5	8.1	4.4	4.6	3.7	3.3	5.8

Source: Department of Immigration

\*Excludes Efate Island

**Table 1 : Summary of Overseas Migration**  
**Tableau 1 : Résumé des échanges migratoires avec l'extérieur**

Year	Month	ARRIVALS / ARRIVEES						DEPARTURES / DEPARTURES						Cruiseship Arrivals/ Croisiéristes	Année	Mois
		PORT VILA		LUGANVILLE		TOTAL		PORT VILA		LUGANVILLE		TOTAL				
		Residents Résidents	Visitors Visiteurs	Residents Résidents	Visitors Visiteurs	Residents Résidents	Visitors Visiteurs	Resident Résidents	Visitor Visiteurs	Resident Résidents	Visitors Visiteurs	Resident Résidents	Visitors Visiteurs			
2012		22,594	105,611	364	2,550	22,958	108,161	14,803	113,158	134	2,339	14,937	115,497	213,243	2012	
2013		25,116	106,466	495	3,643	25,611	110,109	16,380	118,753	164	3,496	16,544	122,249	247,296	2013	
2014		25,268	104,471	616	4,337	25,884	108,808	18,705	117,236	375	3,531	19,080	120,767	220,205	2014	
2015		26,655	85,527	307	4,425	26,962	89,952	19,116	95,301	161	3,030	19,277	98,331	197,471	2015	
2016		24,801	89,358	359	5,759	25,160	95,117	20,118	91,064	165	4,406	20,283	94,640	254,489	2016	
2012	Dec	2,420	10,774	49	296	2,469	11,070	1,348	9,365	28	317	1,376	9,682	17,188	2012	Dec
2013	Dec	2,682	9,473	68	380	2,750	9,853	1,656	8,720	17	229	1,673	8,949	22,553	2013	Dec
2014	Dec	2,550	9,948	58	367	2,608	10,315	1,392	8,961	4	219	1,396	9,180	30,267	2014	Dec
2015	Jan	2,396	8,219	37	305	2,433	8,524	1,547	12,350	53	342	1,600	12,692	26,923	2015	Jan
	Feb	1,575	5,176	9	213	1,584	5,389	2,019	5,978	12	118	2,031	6,096	18,803		Fév
	Mar	1,905	4,527	28	310	1,933	4,837	1,288	5,599	9	153	1,297	5,752	6,530		Mar
	Apr	2,219	4,263	5	315	2,224	4,578	1,463	5,183	11	221	1,474	5,404	7,384		Avr
	May	2,605	5,470	10	317	2,615	5,787	1,557	5,831	9	122	1,566	5,953	13,430		Mai
	Jun	2,012	7,761	54	528	2,066	8,289	1,409	7,005	6	273	1,415	7,278	8,357		Juin
	Jul	2,060	9,727	40	304	2,100	10,031	1,703	11,070	12	284	1,715	11,354	19,023		Juil
	Aug	2,054	8,022	21	368	2,075	8,390	1,163	7,393	13	412	1,176	7,805	13,223		Aoû
	Sep	2,766	8,712	9	459	2,775	9,171	1,234	8,817	3	155	1,237	8,972	16,708		Sep
	Oct	1,951	8,115	26	418	1,977	8,533	2,038	10,177	17	400	2,055	10,577	17,450		Oct
	Nov	2,598	6,919	13	356	2,611	7,275	2,224	7,774	15	275	2,239	8,049	18,016		Nov
	Dec	2,514	8,616	55	532	2,569	9,148	1,471	8,124	1	275	1,472	8,399	31,624		Dec
2016	Jan	2,029	8,081	20	398	2,049	8,479	1,644	11,475	14	287	1,658	11,762	28,070	2016	Jan
	Feb	1,180	4,018	38	256	1,218	4,274	1,760	4,491	13	298	1,773	4,789	32,021		Feb
	Mar	1,293	3,902	1	253	1,294	4,155	1,350	4,202	10	252	1,360	4,454	26,776		Mar
	Apr	1,757	5,620	18	463	1,775	6,083	1,314	6,305	6	382	1,320	6,687	16,733		Apr
	May	2,669	5,377	74	365	2,743	5,742	1,530	6,506	39	281	1,569	6,506	18,186		Mai
	Jun	2,512	8,653	44	505	2,556	9,158	1,426	8,208	9	326	1,435	8,534	15,737		Juin
	Jul	1,887	10,297	25	567	1,912	10,864	1,739	11,353	12	433	1,751	11,786	17,242		Juil
	Aug	1,836	8,960	37	859	1,873	9,819	1,774	9,339	17	548	1,791	9,339	9,403		Aoû
	Sep	2,556	9,099	17	573	2,573	9,672	1,485	8,760	13	423	1,498	9,182	15,825		Sep
	Oct	1,791	9,127	22	484	1,813	9,611	1,540	4,808	14	402	1,554	5,210	17,340		Oct
	Nov	2,363	7,040	23	471	2,386	7,511	2,465	7,917	14	352	2,479	8,269	20,205		Nov
	Dec	2,928	9,184	40	565	2,968	9,749	2,091	7,700	4	422	2,095	8,122	36,951		Dec

Source: Immigration Department/Service de l'Immigration

**Table 2 : Visitor Arrivals by Purpose of Visit**  
**Tableau 2 : Arrivées de visiteurs selon le motif du voyage**

Year	Month	VISITORS/VISITEURS					Total Visitors	Année	Mois
		Holidays	Visiting Friends and relatives	Business, Meetings/ Conferences	Stop Over	Others, Education, sports			
		Vacances	Visite à des amis et à la famille	Affaires, réunions ou conférence	Escale	Autres, education, sport			
2012		88,085	7,910	11,294	602	270	108,161	2012	
2013		89,253	7,755	9,079	613	3,409	110,109	2013	
2014		86,239	7,672	8,007	1,022	5,868	108,808	2014	
2015		63,625	8,495	8,687	336	8,809	89,952	2015	
2016		71,088	8,300	8,521	551	6,657	95,117	2016	
2012	Dec	8,989	1,204	803	26	48	11,070	2012	Dec
2013	Dec	8,389	824	392	18	230	9,853	2013	Dec
2014	Dec	8,066	1,110	388	3	748	10,315	2014	Dec
2015	Jan	6,846	524	377	11	766	8,524	2015	Jan
	Feb	3,702	461	556	21	649	5,389		Fév
	Mar	1,899	689	988	2	1,259	4,837		Mar
	Apr	2,281	670	709	13	905	4,578		Avr
	May	3,618	607	936	19	607	5,787		Mai
	Jun	5,643	851	761	42	992	8,289		Juin
	Jul	7,771	873	629	47	711	10,031		Juil
	Aug	6,154	796	831	35	574	8,390		Août
	Sep	6,956	712	836	59	608	9,171		Sep
	Oct	6,468	694	704	30	637	8,533		Oct
	Nov	5,147	637	809	40	642	7,275		Nov
	Dec	7,140	981	551	17	459	9,148		Dec
2016	Jan	6,918	613	363	20	565	8,479	2016	Jan
	Feb	3,249	323	373	30	299	4,274		Fév
	Mar	2,989	396	410	7	353	4,155		Mar
	Apr	4,470	476	605	53	479	6,083		Avr
	May	3,820	605	908	47	362	5,742		Mai
	Jun	6,905	782	826	63	582	9,158		Juin
	Jul	8,347	969	842	74	632	10,864		Juil
	Aug	6,992	900	1,010	62	855	9,819		Aug
	Sep	7,360	787	797	40	688	9,672		Sep
	Oct	6,956	817	951	59	828	9,611		Oct
	Nov	5,416	648	807	39	601	7,511		Nov
	Dec	7,666	984	629	57	413	9,749		Dec

Source: Immigration Department/Service de l'Immigration



**Table 3 : Visitor Arrivals by Usual Country of Residence**  
**Tableau 3 : Arrivées des visiteurs par pays de résidence habituelle**

Year	Month	Australia	New Zealand	New Caledonia	Other Pacific Countries	Europe	North America	Japan	China	Other Countries	TOTAL	Année	Mois
		Australie	Nouvelle-Zélande	Nouvelle-Calédonie	Autres Pays du Pacifique		Amérique du Nord	Japon	Chine	Autres pays			
2012		65,405	14,430	13,138	4,313	5,491	2,094	705	623	1,962	108,161	2012	
2013		65,776	15,068	12,515	4,874	5,544	2,614	659	1,062	1,997	110,109	2013	
2014		60,808	16,293	12,756	6,630	5,591	2,373	763	1,563	2,031	108,808	2014	
2015		46,098	13,422	10,567	5,953	5,839	2,962	633	2,186	2,292	89,952	2015	
2016		49,752	10,931	9,681	5,705	10,067	2,893	903	2,736	2,449	95,117	2016	
2012	Dec	6,833	1,126	1,758	543	361	173	68	56	152	11,070	2012	Dec
2013	Dec	6,123	898	1,358	466	430	243	53	97	185	9,853	2013	Dec
2014	Dec	6,092	921	1,380	870	454	185	102	144	167	10,315	2014	Dec
2015	Jan	4,664	693	1,487	619	470	201	59	154	177	8,524	2015	Jan
	Feb	2,479	386	991	504	389	164	53	258	165	5,389		Fév
	Mar	2,335	495	540	482	348	234	74	120	209	4,837		Mar
	Apr	2,116	549	614	428	327	166	63	122	193	4,578		Avr
	May	2,655	870	639	435	589	213	26	158	202	5,787		Mai
	Jun	4,428	1,243	816	583	537	296	33	149	204	8,289		Juin
	Jul	4,842	2,454	845	418	694	336	75	185	182	10,031		Juil
	Aug	4,000	1,758	946	483	468	263	52	239	181	8,390		Aoû
	Sep	5,170	1,656	677	419	496	235	62	206	250	9,171		Sep
	Oct	4,325	1,429	1,065	514	521	303	44	142	190	8,533		Oct
	Nov	3,865	1,002	825	470	403	274	43	219	174	7,275		Nov
	Dec	5,219	887	1,122	598	597	277	49	234	165	9,148		Dec
2016	Jan	4,495	724	1,060	486	979	276	75	174	210	8,479	2016	Jan
	Feb	1,714	310	200	396	1,027	180	67	226	154	4,274		Fév
	Mar	2,060	325	313	267	664	168	44	175	139	4,155		Mar
	Apr	2,749	636	478	344	1,160	178	53	262	223	6,083		Avr
	May	2,644	552	632	508	823	190	51	181	161	5,742		Mai
	Jun	5,170	1,197	1,143	402	495	306	70	217	158	9,158		Juin
	Jul	5,803	1,600	1,150	708	682	302	88	266	265	10,864		Juil
	Aug	4,842	1,592	814	467	1,136	317	126	259	266	9,819		Aug
	Sep	5,909	1,201	753	444	654	216	106	184	205	9,672		Sep
	Oct	5,193	1,047	820	565	1,079	359	53	240	255	9,611		Oct
	Nov	3,936	782	804	473	750	192	92	323	159	7,511		Nov
	Dec	5,237	965	1,514	645	618	209	78	229	254	9,749		Dec

Source: Immigration Department/Service de l'Immigration

**Table 4 : Overseas Arrivals of Residents by Nationality****Tableau 4 : Arrivées des résidents par nationalité**

Year	Month	Ni-Vanuatu	Australian Australien	French Français	British Anglais	New Zealander Néo- Zélandais	Asian Asiatiques	Pacific Islanders Autres pays du Pacifique	North Americans Américain du Nord	Other countries Autres pays	TOTAL	Année	Mois
2012		14,317	3,629	1,526	203	1,236	696	686	370	295	22,958	2012	
2013		15,410	4,096	1,782	167	1,293	915	1,007	566	375	25,611	2013	
2014		15,044	4,297	1,934	104	1,274	966	1,161	690	414	25,884	2014	
2015		17,406	3,557	1,672	95	1,206	1,008	1,045	569	404	26,962	2015	
2016		18,511	2,516	1,120	164	855	741	645	343	264	25,160	2016	
2012	Dec	1,690	337	110	18	115	66	64	43	26	2,469	2012	Dec
2013	Dec	1,951	310	139	11	117	60	78	55	29	2,750	2013	Dec
2014	Dec	1,814	320	128	0	104	56	80	57	49	2,608	2014	Dec
2015	Jan	1,306	368	220	4	138	94	181	74	48	2,433	2015	Jan
	Feb	814	258	180	0	96	83	80	46	27	1,584		Fév
	Mar	1,033	363	102	2	103	105	81	114	30	1,933		Mar
	Apr	1,290	371	183	3	122	76	89	39	51	2,224		Avr
	May	1,885	293	87	21	101	85	79	39	25	2,615		Mai
	Jun	1,428	283	124	17	62	48	58	23	23	2,066		Juin
	Jul	1,330	292	84	6	94	85	127	34	48	2,100		Juil
	Aug	1,250	270	179	4	104	92	84	54	38	2,075		Aoû
	Sep	2,155	233	86	6	85	76	69	32	33	2,775		Sep
	Oct	1,189	267	149	12	118	92	69	50	31	1,977		Oct
	Nov	1,845	306	141	11	103	78	73	22	32	2,611		Nov
	Dec	1,881	253	137	9	80	94	55	42	18	2,569		Dec
2016	Jan	1,246	301	159	17	97	76	85	44	24	2,049	2016	Jan
	Feb	859	147	51	5	56	41	30	15	14	1,218		Fév
	Mar	905	164	50	7	48	26	48	31	15	1,294		Mar
	Apr	1,332	191	47	9	59	54	47	11	24	1,775		Apr
	May	2,055	257	108	16	80	102	62	33	30	2,743		Mai
	Jun	1,817	272	133	27	86	98	65	29	29	2,556		Juin
	Jul	1,306	215	73	12	82	78	72	49	25	1,912		Juil
	Aug	1,233	212	149	19	86	58	61	28	27	1,873		Aoû
	Sep	2,090	191	76	8	57	63	43	27	18	2,573		Sep
	Oct	1,275	213	104	12	58	51	46	30	24	1,813		Oct
	Nov	1,924	175	87	10	82	39	42	10	17	2,386		Nov
	Dec	2,469	178	83	22	64	55	44	36	17	2,968		Dec

Source: Immigration Department / Service de l'Immigration

**Table 5 : Visitors Arriving by Air Intended Length of Stay****Tableau 5 : Arrivée des Visiteurs à longue durée de Séjour**

Year	Month	AVERAGE INTENDED LENGTH OF STAY / LA MOYENNE DE LONGUE DUREE DE SEJOUR			Année	Mois
		Port Vila	Luganville	Vanuatu		
2012		9.8	11.1	10.5	2012	
2013		10.8	11.6	11.2	2013	
2014		9.5	11.5	10.6	2014	
2015		10.5	11.7	11.1	2015	
2012	Dec	8.9	12.7	10.8	2012	Dec
2013	Dec	11.1	12.2	11.6	2013	Dec
2014	Dec	9.7	13.1	11.4	2014	Dec
2015	Jan	8.9	9.2	9.0	2015	Jan
	Feb	12.5	10.8	11.7		Fév
	Mar	11.5	15.5	13.5		Mar
	Apr	11.1	10.4	10.8		Avr
	May	10.4	14.3	12.3		Mai
	Jun	11.6	11.4	11.5		Juin
	Jul	11.7	12.5	12.1		Juil
	Aug	10.5	10.9	10.7		Août
	Sep	9.5	10.8	10.2		Sep
	Oct	9.5	11.6	10.5		Oct
	Nov	8.9	10.3	9.6		Nov
	Dec	10.2	12.4	11.3		Dec
2016	Jan	10.3	11.2	10.8	2016	Jan
	Feb	11.4	10.7	11.0		Fév
	Mar	8.5	13.7	11.1		Mar
	Apr	11.2	11.2	11.2		Avr
	May	9.3	13.3	11.3		Mai
	Jun	9.8	12.6	11.2		Juin
	Jul	10.5	10.9	10.7		Juil
	Aug	10.6	12.6	11.6		Août
	Sep	10.8	11.0	10.9		Sep
	Oct	10.9	11.0	10.9		Oct
	Nov	9.8	11.8	10.8		Nov
	Dec	9.8	9.3	9.5		Dec

Source: Immigration Department/Service de l'Immigration

**Table 6 : Visitors Arriving by Air Average Age**  
**Tableau 6 : Arrivée des Visiteurs par Age moyen**

Year	Month	AVERAGE AGE OF VISITORS / L'AGE MOYEN DES VISITEURS			Année	Mois
		Port Vila	Luganville	Vanuatu		
2012	Dec	36.6	36.9	36.8	2012	Dec
2013	Dec	29.8	33.6	31.7	2013	Dec
2014	Dec	34.3	35.2	34.7	2014	Dec
2015	Jan	33.3	36.2	34.8	2015	Jan
	Feb	39.6	46.4	43.0		Fév
	Mar	39.6	41.2	40.4		Mar
	Apr	38.7	41.7	40.2		Avr
	May	38.8	48.5	43.7		Mai
	Jun	38.0	27.6	32.8		Juin
	Jul	38.1	43.8	41.0		Juil
	Aug	40.7	45.5	43.1		Aoû
	Sep	37.6	40.1	38.8		Sep
	Oct	37.2	42.4	39.8		Oct
	Nov	39.9	41.6	40.7		Nov
	Dec	39.9	36.2	38.0		Dec
2016	Jan	34.1	38.9	36.5	2016	Jan
	Feb	40.5	42.2	41.3		Fév
	Mar	38.4	39.6	39.0		Mar
	Apr	39.6	39.6	39.6		Apr
	May	42.0	45.6	43.8		Mai
	Jun	37.4	42.1	39.8		Juin
	Jul	35.5	42.4	39.0		Juil
	Aug	40.7	43.5	42.1		Aoû
	Sep	37.9	40.4	39.2		Sep
	Oct	39.0	43.5	41.3		Oct
	Nov	39.8	42.1	41.0		Nov
	Dec	36.3	44.3	40.3		Dec

Source: Immigration Department/Service de l'Immigration

**Table 7: Visitors travelling to Outer Islands, Vanuatu**

**Tableau 7: Les visiteurs en voyage d'Îles Extérieures, Vanuatu**

Year	Month	Tanna	Santo	Efate offshore Islands	Pentecost Island	Malekula	Ambrym	Other Islands	TOTAL	Année	Mois
				Efate et les îles côtières	îles Pentecôte	Malicolo		D'autres îles			
2014	Dec	414	349	189	13	30	19	66	1,080	2014	Dec
2015	Jan	611	420	261	15	56	22	103	1,488	2015	Jan
	Feb	264	208	46	11	27	25	65	646		Fév
	Mar	257	249	139	16	42	12	68	783		Mar
	Apr	351	327	243	59	28	38	117	1,163		Avr
	May	356	366	258	38	31	39	130	1,218		Mai
	Jun	461	559	339	75	90	58	206	1,788		Juin
	Jul	634	663	534	43	87	79	256	2,296		Juil
	Aug	649	659	324	24	149	95	236	2,136		Août
	Sep	515	458	395	14	88	54	139	1,663		Sep
	Oct	650	649	543	24	76	116	214	2,272		Oct
	Nov	415	441	337	142	65	63	142	1,472		Nov
	Dec	369	333	174	127	43	18	127	1,074		Dec
2016	Jan	222	303	161	15	33	14	66	814	2016	Jan
	Feb	359	342	200	13	44	29	69	1,056		Fév
	Mar	359	342	200	13	44	29	69	1,056		Mar
	Apr	100	108	83	5	24	7	32	359		Apr
	May	576	552	321	54	54	39	110	1,706		Mai
	Jun	800	745	490	190	113	97	238	2,673		Juin
	Jul	1,225	1,244	954	53	132	104	371	4,083		Juil
	Aug	1,073	1,003	547	45	145	99	297	3,209		Aug
	Sep	821	830	620	23	45	129	324	2,792		Sep
	Oct	363	334	250	11	41	40	145	1,184		Oct
	Nov	498	550	304	21	55	43	134	1,605		Nov
	Dec	567	402	256	15	167	34	91	1,532		Dec

Source: Department of Immigration

Note: Data on visitors travelling to outer islands is only available from May 2014