



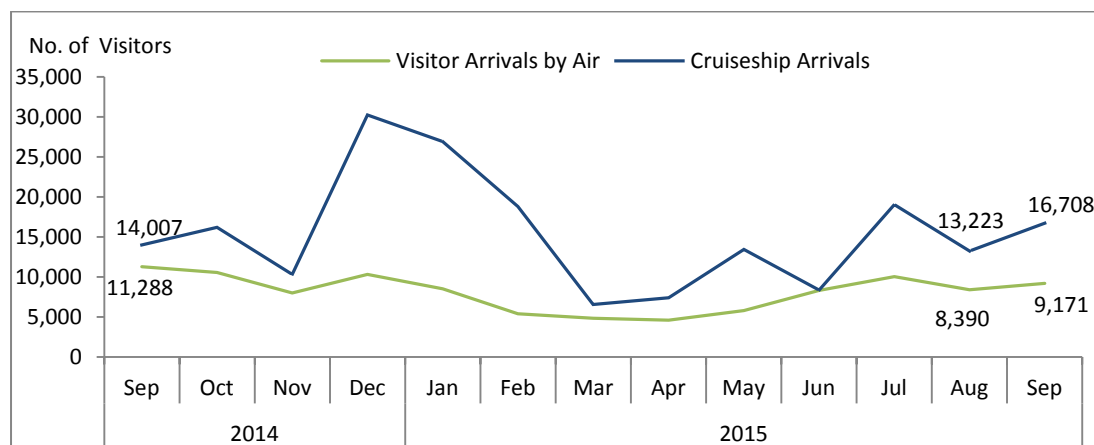
STATISTICS UPDATE: INTERNATIONAL ARRIVAL STATISTICS

SEPTEMBER 2015 HIGHLIGHTS

RELEASE DATE: 24th November 2015

OVERVIEW

Fig 1: International Visitor Arrivals: September 2014 to September 2015



- International Visitors to Vanuatu in September 2015 made up to 35% of visitor arrivals by air. Visitors by air decreased over September 2014 however figures increased over August 2015.
- In September 2015, visitors by air recorded 9,171 visitors, a decrease of (-19%) when compared to September 2014, however visitor arrivals increased 9% over August 2015. The decline was attributed by the fall in visitors who arrived for holiday purposes over September 2014.
- In September 2015, 18% or 1 in 6 visitors arriving by air travelled to outer islands.
- Cruise ship or day visitors accounted for 65% of total visitors to Vanuatu in September 2015. The day visitors recorded 16,708 visitors, figures increased by (19%) over August 2014, it also increased by (26%) over August 2015. The increase in day visitors was attributable to an increase in the number of cruise ship by one extra visit compare to seven cruise ships visit in September 2014.

CONTENTS

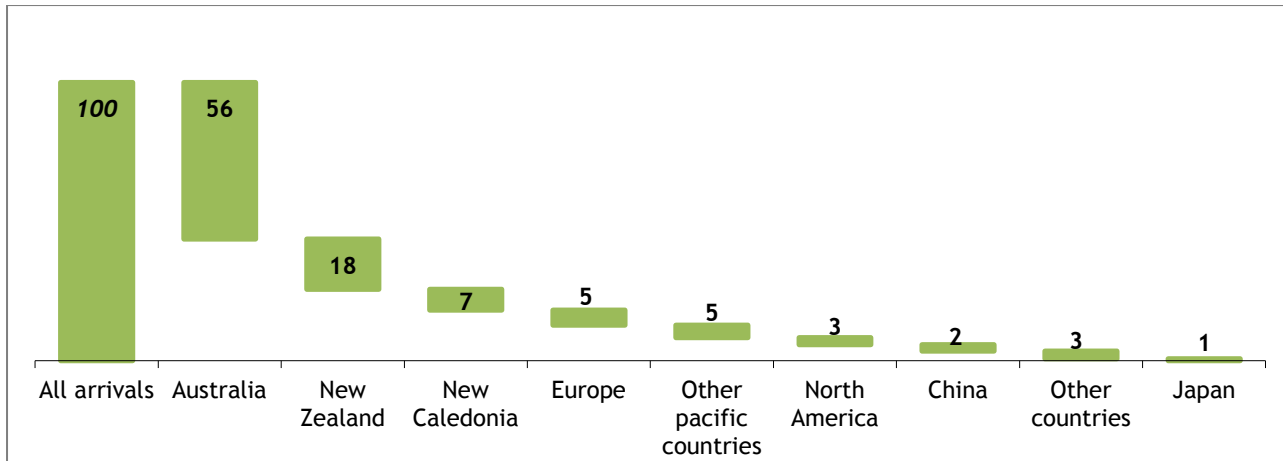
	Page #
HIGHLIGHTS	1-4
ANNEX 1-2	5
TABLES:	
1: Summary of Overseas migration	6
2: Visitors by Purpose of Visit	7
3: Visitors by Country of Usual Residence	8
4: Resident arrivals by Nationality	9
5: Visitors by air, Intended length of stay	10
6: Visitors by air, Average age	11
7: Visitors to Outer islands	12

PURPOSE OF VISIT FOR VISITORS ARRIVING BY AIR

- Visitor who arrived for holiday purpose accounted for 76% in September 2015. Visitor who arrived for business, meetings or conferences at 9%, visitors who arrived to visit friends and relatives at 8%, while visitors who arrived for other purposes, education or sports and stop over made up less than 1%.

COUNTRY OF USUAL RESIDENCE FOR VISITORS ARRIVING BY AIR

Fig 2: Percentage share of visitors in September 2015 by Country of Usual Residence



- Australian visitors continue to make up the highest number of visitors arriving by air at 56%, followed by New Zealand visitors at 18%, New Caledonian visitors at 7%, European and visitors from other pacific countries at 5% respectively, North American 3%, China at 2%, and other countries at 2% and Japan visitors at 1%.

VISITOR ARRIVAL INDEX¹

Figure 3 shows the total number of visitor arrivals and arrivals from Australia, New Zealand, New Caledonia and all other countries combined to show trends in arrivals, with the number of visitors.

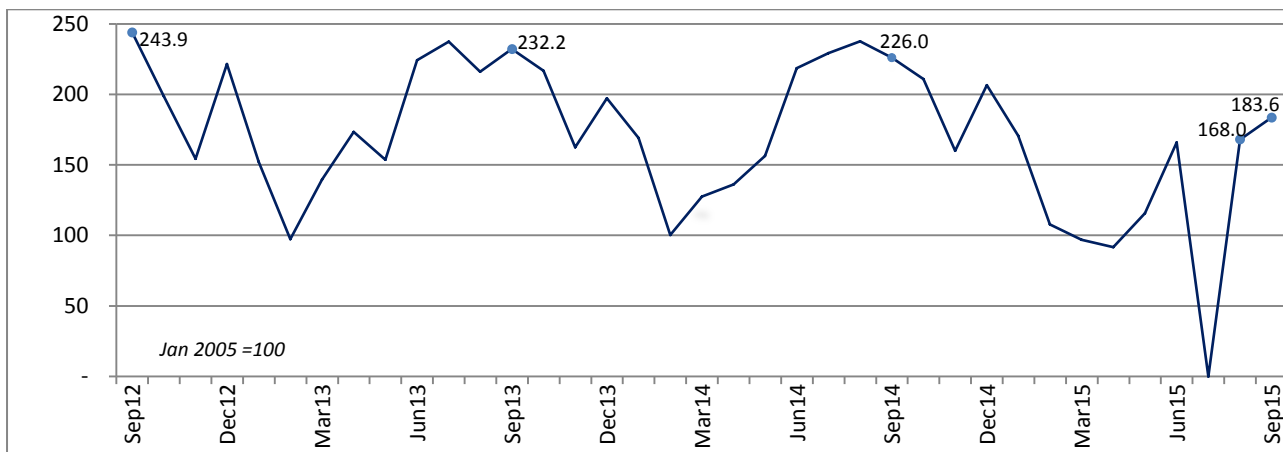
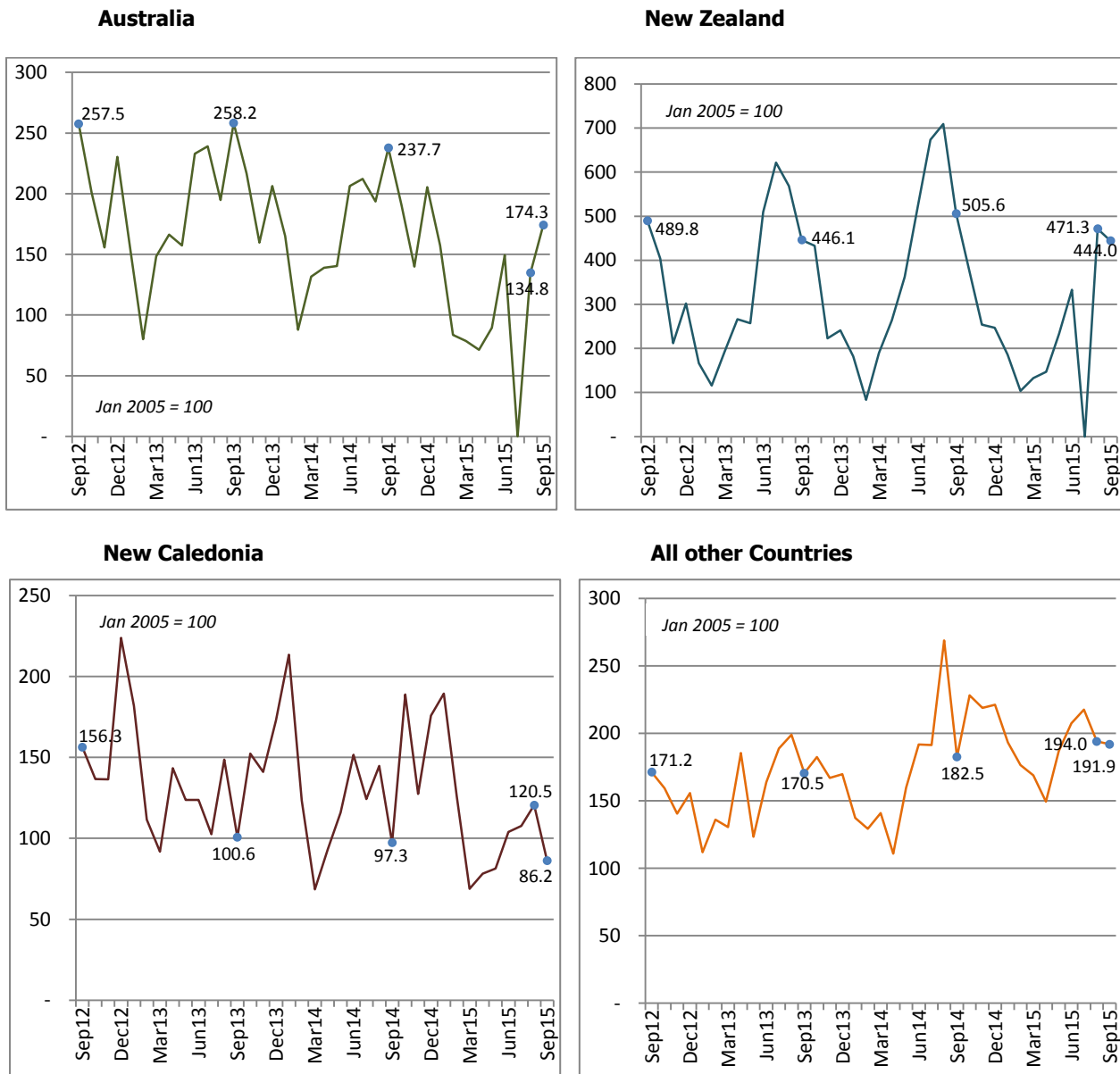


Fig 3: Index of Total Air Visitor Arrivals, September 2012 to September 2015 (January 2005 = 100)

¹ Tourism in Vanuatu is seasonal, and it is difficult to analyse changes in international arrivals and country of residence by looking at the monthly number of arrivals based on an index value of 100 in January 2005. This index allows analysis over time of the real increases and decreases in international air arrivals.

- In September 2015, visitors index figures for all countries declined by (-19%), over September 2014. (Fig.3)

Fig 4: Index of Visitor Arrivals and Country of Usual Residence, September 2012 to September 2015 (January 2005 = 100)



Note: the vertical axis scale varies in each country chart.

- The New Zealand, Australian and New Caledonian markets decreased in index values by (-27%), (-12%) and (-11%) respectively in September 2015 over September 2014.

AVERAGE INTENDED LENGTH OF STAY FOR VISITORS ARRIVING BY AIR

- In September 2015, the average length of stay stood at 10 days an increase of 1 day over September 2014 it also increased by 1 day by the same number of day over previous month.

AVERAGE AGE FOR VISITORS ARRIVING BY AIR

- Visitor arrivals by air in September 2015 were of average age 39 years, which remained unchanged over September 2014, but decreased by 4 years over August 2015.

DATA SOURCE

All International arrival statistics by air provided in the report is sourced from completed Arrival and Departure cards at the Department of Immigration. Cruise ship figures are also sourced from the Department of Immigration.

NEXT UPDATE (MONTHLY)

RELEASE DATE

October 2015

14th December 2015

PROVINCIAL STATISTICS OFFICES

PO Box 22
Lakatoro, Malekula
MALAMPA PROVINCE

Commercial Center
Lenakel, Tanna
TAFEA PROVINCE

PO Box 8
Saratamata, Ambae
PENAMA PROVINCE

Sola, Vanua Lava
Banks group
TORBA PROVINCE

Millennium Building
Luganville, Santo
SANMA PROVINCE




Mr Simil Johnson
Government Statistician

SUMMARY OF VISITORS TO OUTER ISLANDS² (SEE TABLE 7)

Summary of Indicators

- In September 2015, 32% of visitors by air travelled to Tafea province, followed by Sanma province at 31%.
- In September 2015, visitors by air travelling to outer islands stayed for an average of 8 days.

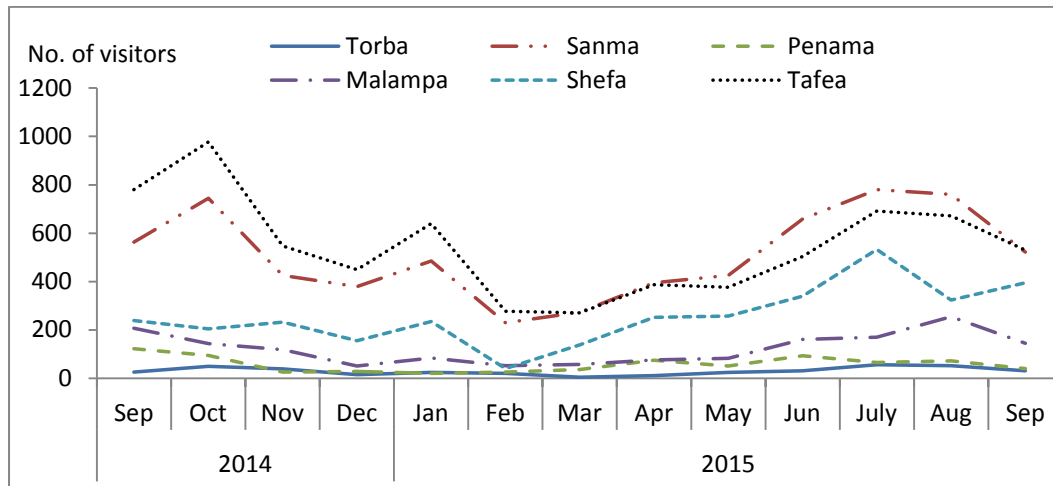


Figure 1: Summary of visitors to other province, September 2014 to September 2015

* Excludes Efate Island

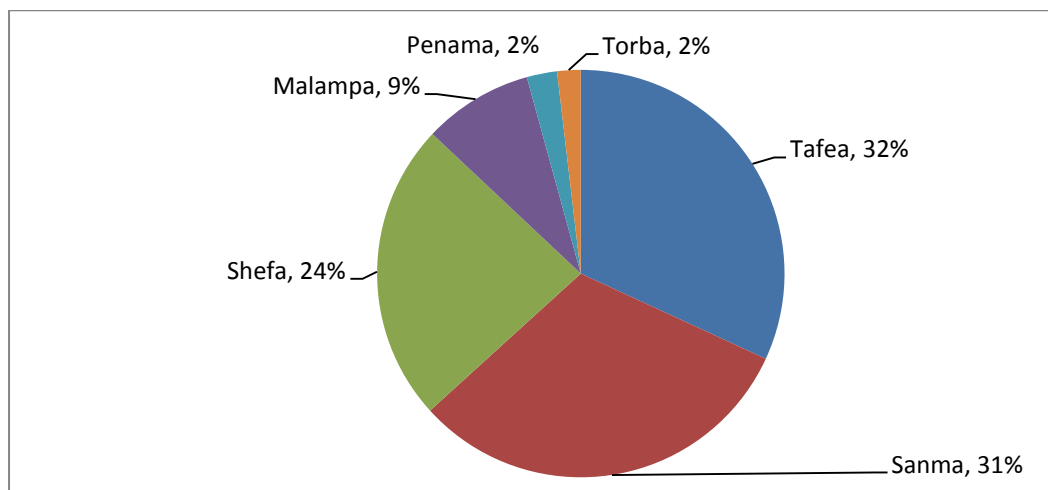


Figure 2: Proportion of visitors to other provinces, September 2015

*Excludes Efate Island

² Data on visitors travelling to outer islands is only available from May 2014

ANNEX 1 – NUMBER OF VISITORS TO OUTER ISLANDS

Table 1: Visitors to outer islands, by province

Year	Month	Province						TOTAL
		Torba	Sanma	Penama	Malampa	Shefa*	Tafea	
2014	Sep	26	563	123	207	239	780	1,938
	Oct	50	744	95	144	205	978	2,216
	Nov	39	426	26	119	232	547	1,389
	Dec	16	379	29	51	156	449	1,080
2015	Jan	24	485	20	84	235	640	1,488
	Feb	20	230	26	52	40	278	646
	Mar	5	274	36	58	139	271	783
	Apr	9	380	75	72	241	386	1,163
	May	24	426	51	83	257	377	1,218
	Jun	26	313	59	92	236	308	1,034
	Jul	57	742	61	160	499	644	2,163
	Aug	52	761	72	255	324	672	2,136
	Sep	32	522	40	145	395	530	1,663

Source: Department of Immigration

*Excludes Efate Island

ANNEX 2 – AVERAGE LENGTH OF STAY FOR VISITORS TO OUTER ISLANDS

Table 2: The average length of stay for visitors travelling to outer islands, by province

Year	Month	Province						TOTAL
		Torba	Sanma	Penama	Malampa	Shefa*	Tafea	
2014	Sep	3.7	7.0	5.0	4.7	3.6	3.1	4.5
	Oct	4.6	5.5	5.1	5.0	3.7	2.8	4.5
	Nov	7.7	6.2	5.1	5.6	2.3	3.3	5.0
	Dec	5.4	6.8	13.6	9.7	1.7	3.4	6.8
2015	Jan	6.8	5.9	5.5	8.6	2.6	2.9	5.4
	Feb	7.3	5.3	7.4	7.5	3.4	2.8	5.6
	Mar	22.4	5.7	27.2	5.8	8.2	3.2	12.1
	Apr	4.0	5.5	2.1	6.8	2.8	5.1	4.2
	May	3.7	6.0	6.1	9.5	9.9	4.2	6.6
	Jun	6.7	5.3	4.1	4.9	3.0	3.5	4.6
	Jul	4.7	6.3	11.8	6.1	4.1	3.5	6.1
	Aug	11.0	8.7	18.1	9.9	3.2	4.6	9.3
	Sep	6.9	6.3	19.3	9.3	4.3	3.3	8.2

Source: Department of Immigration

*Excludes Efate Island

Table 1 : Summary of Overseas Migration
Tableau 1 : Résumé des échanges migratoires avec l'extérieur

Year	Month	ARRIVALS / ARRIVEES						DEPARTURES / DEPARTURES						Cruiseship Arrivals/ Croisiéristes	Total Visitors	Année
		PORT VILA		LUGANVILLE		TOTAL		PORT VILA		LUGANVILLE		TOTAL				
		Residents Résidents	Visitors Visiteurs	Residents Résidents	Visitors Visiteurs	Residents Résidents	Visitors Visiteurs	Resident Résidents	Visitor Visiteurs	Resident Résidents	Visitors Visiteurs	Resident Résidents	Visitors Visiteurs			
2011		21,752	91,107	521	2,853	22,273	93,960	12,958	96,836	156	1,954	13,114	98,790	154,938	248,898	2011
2012		22,594	105,611	364	2,550	22,958	108,161	14,803	113,158	134	2,339	14,937	115,497	213,243	321,404	2012
2013		25,116	106,466	495	3,643	25,611	110,109	16,380	118,753	164	3,496	16,544	122,249	247,296	357,405	2013
2014		25,268	104,471	616	4,337	25,884	108,808	18,705	117,236	375	3,531	19,080	120,767	220,205	329,013	2014
2011	Sep	1,797	9,255	42	367	1,839	9,622	1,201	9,700	16	203	1,217	9,903	7,511	17,133	2011
2012	Sep	1,448	10,154	31	251	1,479	10,405	975	10,726	10	215	985	10,941	9,581	19,986	2012
2013	Sep	1,769	10,682	8	115	1,777	10,797	1,265	11,793	2	142	1,267	11,935	13,642	24,439	2013
2014	Jan	2,303	8,288	25	159	2,328	8,447	1,393	11,871	10	252	1,403	12,123	23,016	31,463	2014
	Feb	1,491	4,878	49	131	1,540	5,009	2,051	5,763	7	85	2,058	5,848	25,728	30,737	
	Mar	1,693	6,169	66	207	1,759	6,376	1,149	7,047	7	208	1,156	7,255	18,883	25,259	
	Apr*	1,753	6,433	76	371	1,829	6,804	3,172	7,089	5	351	3,177	7,440	18,880	25,684	
	May	2,293	7,483	30	329	2,323	7,812	1,360	8,231	59	218	1,419	8,449	17,869	25,681	
	Jun	2,154	10,481	38	436	2,192	10,917	967	9,984	32	355	999	10,339	18,911	29,828	
	Jul	2,030	10,944	56	502	2,086	11,446	1,339	12,891	67	341	1,406	13,232	11,470	22,916	
	Aug	2,208	11,515	38	350	2,246	11,865	1,311	12,517	81	219	1,392	12,736	14,667	26,532	
	Sep	2,509	10,731	59	557	2,568	11,288	879	10,956	59	557	938	11,513	14,007	25,295	
	Oct	1,750	10,017	56	516	1,806	10,533	1,624	12,394	30	426	1,654	12,820	16,195	26,728	
	Nov	2,534	7,584	65	412	2,599	7,996	2,068	9,532	14	300	2,082	9,832	10,312	18,308	
	Dec	2,550	9,948	58	367	2,608	10,315	1,392	8,961	4	219	1,396	9,180	30,267	40,582	
2015	Jan	2,396	8,219	37	305	2,433	8,524	1,547	12,350	53	342	1,600	12,692	26,923	35,447	2015
	Feb	1,575	5,176	9	213	1,584	5,389	2,019	5,978	12	118	2,031	6,096	18,803	24,192	
	Mar	1,905	4,527	28	310	1,933	4,837	1,288	5,599	9	153	1,297	5,752	6,530	11,367	
	Apr	2,219	4,263	5	315	2,224	4,578	1,463	5,183	11	221	1,474	5,404	7,384	11,962	
	May	2,605	5,470	10	317	2,615	5,787	1,557	5,831	9	122	1,566	5,953	13,430	19,217	
	Jun	2,012	7,761	54	528	2,066	8,289	1,409	7,005	6	273	1,415	7,278	8,357	16,646	
	Jul	2,060	9,727	40	304	2,100	10,031	1,703	11,070	12	284	1,715	11,354	19,023	29,054	
	Aug	2,054	8,022	21	368	2,075	8,390	1,163	7,393	13	412	1,176	7,805	13,223	21,613	
	Sep	2,766	8,712	9	459	2,775	9,171	1,234	8,817	3	155	1,237	8,972	16,708	25,879	

Source: Immigration Department/Service de l'Immigration

- Nil or less than half final unit shown / Résultat nul ou inférieur au demi de l'unité indiquée

* there are missing batches with an estimated total of 457 visitors missing. April figures will be revised once the missing flight batches are located.

Table 2 : Visitor Arrivals by Purpose of Visit
Tableau 2 : Arrivées de visiteurs selon le motif du voyage

Year	Month	VISITORS/VISITEURS						Total Visitors	Année	Mois
		Holidays Vacances	Visiting Friends and relatives Visite à des amis et à la famille	Business, Meetings/ Conferences Affaires, réunions ou conférence	Stop Over Escale	Others, Education, sports Autres, education, sport	Visiteurs global			
2011		75,821	7,320	9,933	790	96	93,960	2011		
2012		88,085	7,910	11,294	602	270	108,161	2012		
2013		89,253	7,755	9,079	613	3,409	110,109	2013		
2014		86,239	7,672	8,007	1,022	5,868	108,808	2014		
2011	Sep	7,749	628	1,153	66	26	9,622	2011	Sept	
2012	Sep	8,776	638	929	55	7	10,405	2012	Sept	
2013	Sep	8,678	767	1,001	59	292	10,797	2013	Sept	
	Sep	9,814	567	847	70	298	11,596		Sept	
	Oct	8,806	705	849	82	385	10,827		Oct	
	Nov	6,389	566	757	36	375	8,123		Nov	
	Dec	8,389	824	392	18	230	9,853		Dec	
2014	Jan	7,317	544	335	63	188	8,447	2014	Jan	
	Feb	3,773	407	462	47	320	5,009		Fév	
	Mar	4,906	406	628	35	401	6,376		Mar	
	Apr*	5,593	406	640	11	154	6,804		Avr	
	May	6,213	534	776	22	267	7,812		Mai	
	Jun	8,865	744	880	52	376	10,917		Juin	
	Jul	9,423	830	578	121	494	11,446		Juil	
	Aug	9,321	743	882	214	705	11,865		Aoû	
	Sep	8,904	699	807	147	731	11,288		Sept	
	Oct	8,042	685	851	145	810	10,533		Oct	
	Nov	5,816	564	780	162	674	7,996		Nov	
	Dec	8,066	1,110	388	3	748	10,315		Dec	
2015	Jan	6,846	524	377	11	766	8,524	2015	Jan	
	Feb	3,702	461	556	21	649	5,389		Fév	
	Mar	1,899	689	988	2	1,259	4,837		Mar	
	Apr	2,281	670	709	13	905	4,578		Avr	
	May	3,618	607	936	19	607	5,787		Mai	
	Jun	5,643	851	761	42	992	8,289		Juin	
	Jul	7,771	873	629	47	711	10,031		Juil	
	Aug	6,154	796	831	35	574	8,390		Aoû	
	Sep	6,956	712	836	59	608	9,171		Sept	

Source: Immigration Department/Service de l'Immigration

- Nil or less than half final unit shown / résultat nul ou inférieur au demi de l'unité indiquée

* there are missing batches with an estimated total of 457 visitors missing. April figures will be revised once the missing flight batches are located.

Table 3 : Visitor Arrivals by Usual Country of Residence
Tableau 3 : Arrivées des visiteurs par pays de résidence habituelle

Year	Month	Australia	New Zealand	New Caledonia	Other Pacific Countries	Europe	North America	Japan	China	Other Countries	TOTAL	Année	Mois
		Australie	Nouvelle-Zélande	Nouvelle-Calédonie	Autres Pays du Pacifique		Amérique du Nord	Japon	Chine	Autres pays			
2011		57,843	11,399	11,376	3,397	5,265	1,922	630	581	1,547	93,960	2011	
2012		65,405	14,430	13,138	4,313	5,491	2,094	705	623	1,962	108,161	2012	
2013		65,776	15,068	12,515	4,874	5,544	2,614	659	1,062	1,997	110,109	2013	
2014		60,808	16,293	12,756	6,630	5,591	2,373	763	1,563	2,031	108,808	2014	
2011	Sep	5,090	1,835	1,088	313	760	198	91	74	173	9,622	2011	Aoû
2012	Sep	6,043	2,049	928	298	646	181	58	52	150	10,405	2012	Aoû
2013	Sep	5,781	2,121	1,167	444	672	245	88	108	171	10,797	2013	Aoû
2014	Jan	4,898	679	1,676	284	414	188	42	124	142	8,447	2014	Jan
	Feb	2,608	310	968	357	304	207	33	101	121	5,009		Fév
	Mar	3,907	707	538	462	360	146	48	94	114	6,376		Mar
	Apr*	4,125	984	732	265	368	108	21	123	78	6,804		Avr
	May	4,162	1,350	911	369	404	215	72	110	219	7,812		Mai
	Jun	6,123	1,936	1,191	411	453	306	82	228	187	10,917		Juin
	Jul	6,295	2,513	975	526	544	198	61	126	208	11,446		Juil
	Aug	5,747	2,645	1,137	824	680	315	142	119	256	11,865		Aoû
	Sep	7,052	1,886	764	655	407	139	55	137	193	11,288		Sept
	Oct	5,652	1,415	1,483	725	659	209	52	130	208	10,533		Oct
	Nov	4,147	947	1,001	882	544	157	53	127	138	7,996		Nov
	Dec	6,092	921	1,380	870	454	185	102	144	167	10,315		Dec
2015	Jan	4,664	693	1,487	619	470	201	59	154	177	8,524	2015	Jan
	Feb	2,479	386	991	504	389	164	53	258	165	5,389		Fév
	Mar	2,335	495	540	482	348	234	74	120	209	4,837		Mar
	Apr	2,116	549	614	428	327	166	63	122	193	4,578		Avr
	May	2,655	870	639	435	589	213	26	158	202	5,787		Mai
	Jun	4,428	1,243	816	583	537	296	33	149	204	8,289		Juin
	Jul	4,842	2,454	845	418	694	336	75	185	182	10,031		Juil
	Aug	4,000	1,758	946	483	468	263	52	239	181	8,390		Aoû
	Sep	5,170	1,656	677	419	496	235	62	206	250	9,171		Sept

Source: Immigration Department / Service de l'Immigration

* there are missing batches with an estimated total of 457 visitors missing. April figures will be revised once the missing flight batches are located.

Table 4 : Overseas Arrivals of Residents by Nationality**Tableau 4 : Arrivées des résidents par nationalité**

Year	Month	Ni-Vanuatu	Australian Australien	French Français	British Anglais	New Zealander Néo- Zélandais	Asian Asiatiques	Pacific Islanders Autres pays du Pacifique	North Americans Américain du Nord	Other countries Autres pays	TOTAL	Année	Mois
2011		12,508	3,867	1,802	244	1,370	719	1,090	352	321	22,273	2011	
2012		14,317	3,629	1,526	203	1,236	696	686	370	295	22,958	2012	
2013		15,410	4,096	1,782	167	1,293	915	1,007	566	375	25,611	2013	
2014		15,044	4,297	1,934	104	1,274	966	1,161	690	414	25,884	2014	
2011	Sep	1,030	327	144	12	130	58	87	28	23	1,839	2011	Aoû
2012	Sep	814	282	105	18	90	51	47	41	31	1,479	2012	Aoû
2013	Sep	1,014	302	138	5	90	75	67	56	30	1,777	2013	Aoû
2014	Jan	1,071	456	230	4	144	88	195	109	31	2,328	2014	Jan
	Feb	678	319	176	1	100	75	98	67	26	1,540		Fév
	Mar	864	383	139	12	125	76	84	37	39	1,759		Mar
	Apr	1,149	294	111	8	88	56	63	36	24	1,829		Avr
	May	1,472	330	123	9	102	97	99	51	40	2,323		Mai
	Jun	1,312	353	164	15	114	65	80	55	34	2,192		Juin
	Jul	1,185	350	135	10	99	100	121	57	29	2,086		Juil
	Aug	1,213	355	263	11	118	84	88	62	52	2,246		Aoû
	Sep	1,748	376	107	19	79	86	83	46	24	2,568		Sept
	Oct	825	396	213	5	79	108	87	59	34	1,806		Oct
	Nov	1,713	365	145	10	122	75	83	54	32	2,599		Nov
	Dec	1,814	320	128	0	104	56	80	57	49	2,608		Dec
2015	Jan	1,306	368	220	4	138	94	181	74	48	2,433	2015	Jan
	Feb	814	258	180	0	96	83	80	46	27	1,584		Fév
	Mar	1,033	363	102	2	103	105	81	114	30	1,933		Mar
	Apr	1,290	371	183	3	122	76	89	39	51	2,224		Avr
	May	1,885	293	87	21	101	85	79	39	25	2,615		Mai
	Jun	1,428	283	124	17	62	48	58	23	23	2,066		Juin
	Jul	1,330	292	84	6	94	85	127	34	48	2,100		Juil
	Aug	1,250	270	179	4	104	92	84	54	38	2,075		Aoû
	Sep	2,155	233	86	6	85	76	69	32	33	2,775		Sept

Source: Immigration Department / Service de l'Immigration

Table 5 : Visitors Arriving by Air Intended Length of Stay*
Tableau 5 : Arrivée des Visiteurs à longue durée de Séjour

Year	Month	AVERAGE INTENDED LENGTH OF STAY / LA MOYENNE DE LONGUE DUREE DE SEJOUR			Année	Mois
		Port Vila	Luganville	Vanuatu		
2011		8.9	10.9	9.9	2011	
2012		9.8	11.1	10.5	2012	
2013		10.8	11.6	11.2	2013	
2014		9.5	11.5	10.6	2014	
2011	Sep	9.0	10.8	9.9	2011	Sept
2012	Sep	10.4	10.5	10.5	2012	Sept
2013	Sep	9.5	13.2	11.3	2013	Sept
2014	Jan	10.4	13.6	12.0	2014	Jan
	Feb	13.1	16.7	14.9		Fév
	Mar	9.9	9.0	9.5		Mar
	Apr*	9.0	10.8	9.9		Avr
	May	8.8	13.1	11.0		Mai
	Jun	9.2	10.9	10.0		Juin
	Jul	9.9	13.1	11.5		Juil
	Aug	8.8	10.2	9.5		Aoû
	Sep	9.0	9.7	9.3		Sept
	Oct	8.1	8.6	9.3		Oct
	Nov	8.3	9.6	9.0		Nov
	Dec	9.7	13.1	11.4		Dec
2015	Jan	8.9	9.2	9.0	2015	Jan
	Feb	12.5	10.8	11.7		Fév
	Mar	11.5	15.5	13.5		Mar
	Apr	11.1	10.4	10.8		Avr
	May	10.4	14.3	12.3		Mai
	Jun	11.6	11.4	11.5		Juin
	Jul	11.7	12.5	12.1		Juil
	Aug	10.5	10.9	10.7		Aoû
	Sep	9.5	10.8	10.2		Sept

Source: Immigration Department/Service de l'Immigration

* there are missing batches with an estimated total of 457 visitors missing, April figures will be revised once the missing flight batches are located.

Table 6 : Visitors Arriving by Air Average Age
Tableau 6 : Arrivée des Visiteurs par Age moyen

Year	Month	AVERAGE AGE OF VISITORS / L'AGE MOYEN DES VISITEURS			Année	Mois
		Port Vila	Luganville	Vanuatu		
2011	Sep	41.4	36.7	39.0	2011	Sept
2012	Sep	41.5	46.5	44.0	2012	Sept
2013	Sep	38.1	43.7	40.9	2013	Sept
2014	Jan	35.1	32.4	33.7	2014	Jan
	Feb	44.8	38.9	41.9		Fév
	Mar	40.1	46.9	43.5		Mar
	Apr*	37.3	40.8	39.0		Avr
	May	41.8	44.3	43.1		Mai
	Jun	38.6	38.3	38.4		Juin
	Jul	37.9	41.2	39.6		Juil
	Aug	39.9	46.1	43.0		Aoû
	Sep	37.5	40.4	38.9		Sept
	Oct	39.2	44.7	38.9		Oct
	Nov	38.9	41.1	40.0		Nov
	Dec	34.3	35.2	34.7		Dec
2015	Jan	33.3	36.2	34.8	2015	Jan
	Feb	39.6	46.4	43.0		Fév
	Mar	39.6	41.2	40.4		Mar
	Apr	38.7	41.7	40.2		Avr
	May	38.8	48.5	43.7		Mai
	Jun	38.0	27.6	32.8		Juin
	Jul	38.1	43.8	41.0		Juil
	Aug	40.7	45.5	43.1		Aoû
	Sep	37.6	40.1	38.8		Sept

Source: Immigration Department/Service de l'Immigration

* there are missing batches with an estimated total of 457 visitors missing, April figures will be revised once the missing flight batches are located.

Table 7: Visitors travelling to Outer Islands, Vanuatu**Tableau 7: Les visiteurs en voyage d'Îles Extérieures, Vanuatu**

Year	Month	Tanna	Santo	Efate offshore Islands	Pentecost Island	Malekula	Ambrym	Other Islands	TOTAL	Année	Mois
				Efate et les îles côtières	îles Pentecôte	Malicolo		D'autres îles			
2014	May	424	352	148	62	36	33	80	1,135	2014	Mai
	Jun	866	694	307	92	62	66	155	2,242		Juin
	Jul	1293	983	355	78	109	78	230	3,126		Juil
	Aug	1235	813	405	26	123	131	226	2,959		Aoû
	Sept	715	510	257	63	118	86	189	1,938		Sept
	Oct	884	670	228	37	82	57	258	2,216		Oct
	Nov	499	366	255	8	65	51	145	1,389		Nov
	Dec	414	349	189	13	30	19	66	1,080		Dec
2015	Jan	611	420	261	15	56	22	103	1,488	2015	Jan
	Feb	264	208	46	11	27	25	65	646		Fév
	Mar	257	249	139	16	42	12	68	783		Mar
	Apr	351	327	243	59	28	38	117	1,163		Avr
	May	356	366	258	38	31	39	130	1,218		Mai
	Jun	461	559	339	75	90	58	206	1,788		Juin
	Jul	634	663	534	43	87	79	256	2,296		Juil
	Aug	649	659	324	24	149	95	236	2,136		Aoû
	Sept	515	458	395	14	88	54	139	1,663		Sept

Source: Department of Immigration

Note: Data on visitors travelling to outer islands is only available from May 2014