



STATISTICS UPDATE: INTERNATIONAL ARRIVAL STATISTICS

JULY 2015 HIGHLIGHTS

RELEASE DATE: 11th September 2015

OVERVIEW

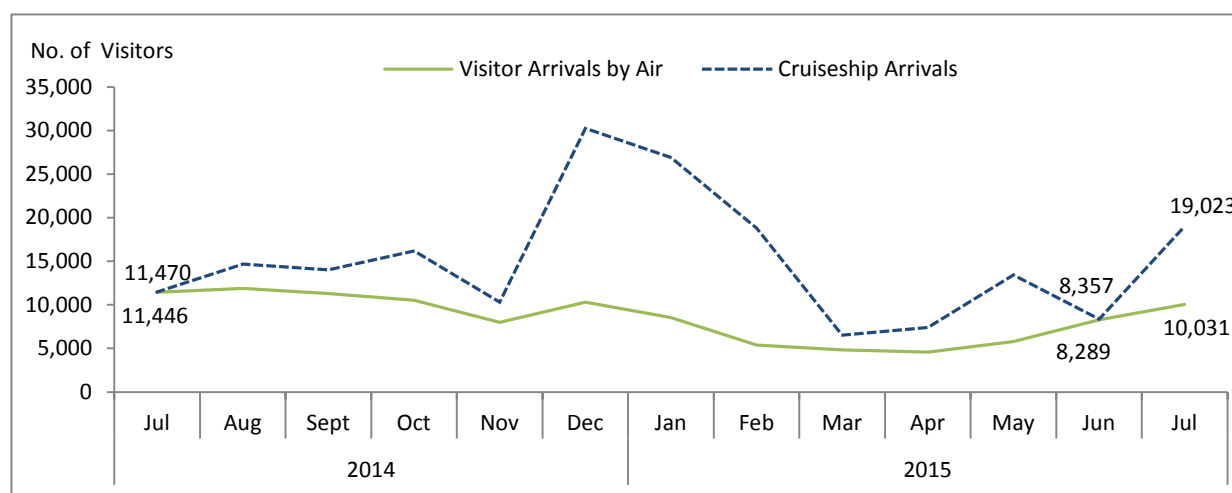


Fig 1: International Visitor Arrivals: July 2014 to July 2015

- International visitors to Vanuatu in July 2015 made up 35% of visitor arrivals by air. Visitors by air declined over July 2014 however figures increased over June 2015.
- Visitors by air recorded 10,031 visitors in July 2015, it fell by (-12%) over July 2014, however figures increased by 21% over June 2015. The decline in visitor arrivals was attributable to the decline in visitor arrivals for holiday purposes over July 2014.
- In July 2015, no more than 22% of visitors arriving by air travelled to outer islands.
- Cruise ship or day visitors made up 65% of total visitors that arrived to Vanuatu in July 2015. Day visitors stood at 19,023 visitors, an increase of 66% over July 2014, it also increased by 10,666 visitors over June 2015. The increase was attributable to increase in cruise ship visits from 6 in July 2014 to 10 in July 2015.

CONTENTS

	Page #
HIGHLIGHTS	1-4
ANNEX 1-2	5
TABLES:	
1: Summary of Overseas migration	6
2: Visitors by Purpose of Visit	7
3: Visitors by Country of Usual Residence	8
4: Resident arrivals by Nationality	9
5: Visitors by air, Intended length of stay	10
6: Visitors by air, Average age	11
7: Visitors to Outer islands	12

PURPOSE OF VISIT FOR VISITORS ARRIVING BY AIR

- Visitors who arrived for holiday purposes accounted for 78% in July 2015. Visitors who arrived to visit friends and relatives at 9%, visitors arriving for other purposes, education or sports at 7% and visitors arriving for business, meetings and conferences at 6% while, visitors arriving for stop over at 1%.

COUNTRY OF USUAL RESIDENCE FOR VISITORS ARRIVING BY AIR

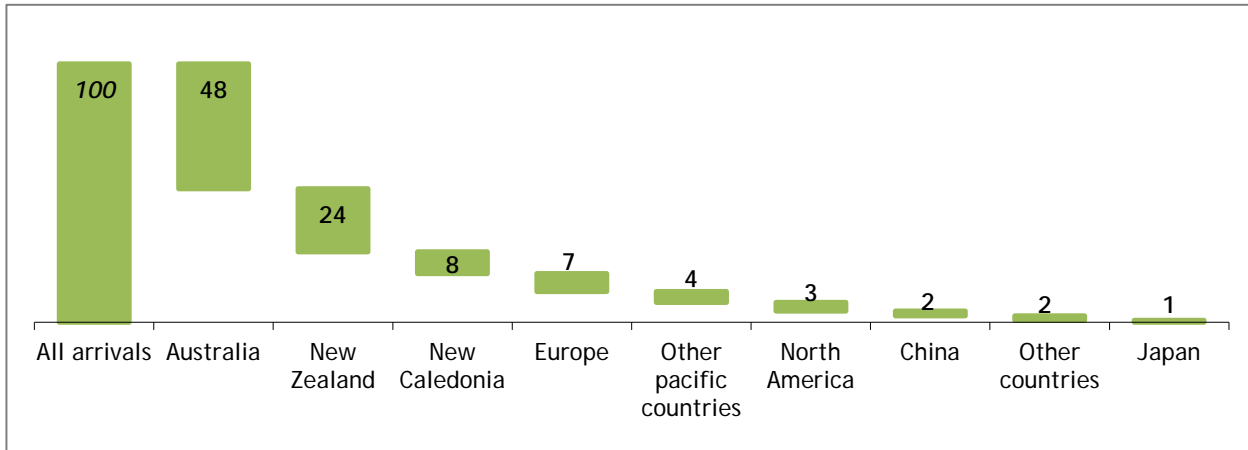


Fig 2: Percentage share of visitors in July 2015 by Country of Usual Residence

- In July 2015, Australian visitors made up the highest number of visitors arriving by air at 48%, followed by New Zealand at 24%, New Caledonian visitors at 8%, European visitors at 7%, other pacific island countries at 4%, North American visitors at 3%, China and visitors from other countries at 2% respectively and Japan visitors at 1%.

VISITOR ARRIVAL INDEX¹

Figure 3 shows the total number of visitor arrivals and arrivals from Australia, New Zealand, New Caledonia and all other countries combined to show trends in arrivals, with the number of visitors.

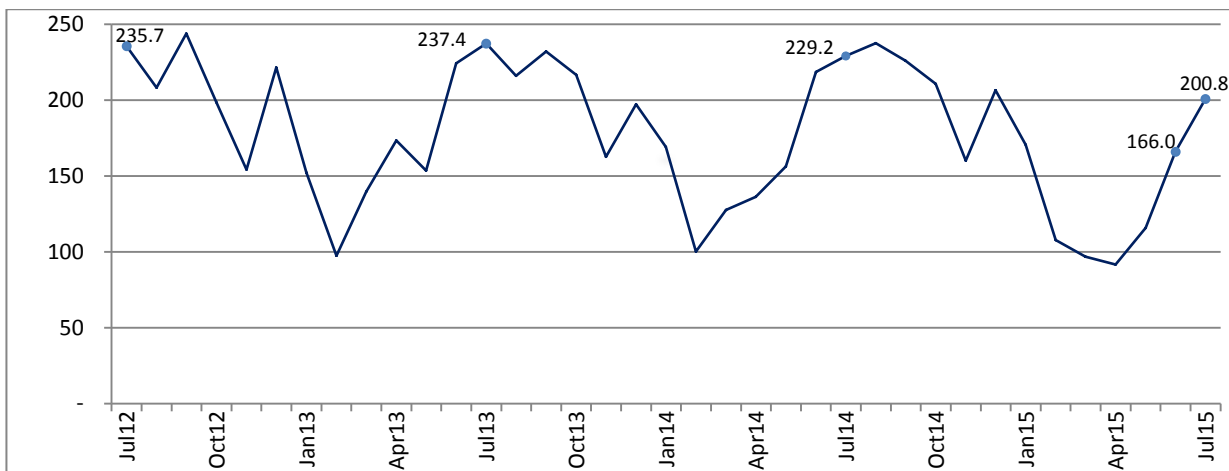
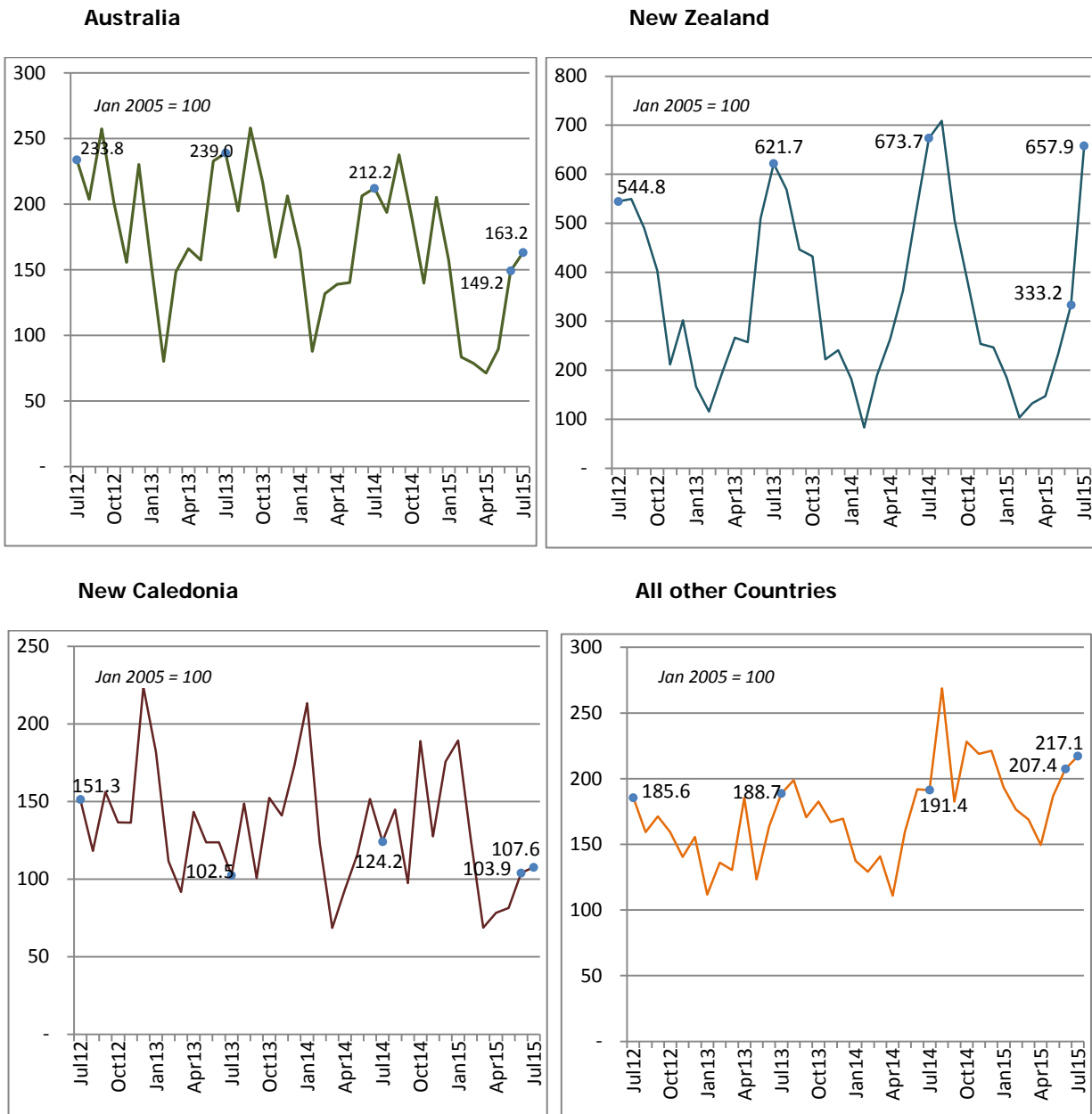


Fig 3: Index of Total Air Visitor Arrivals, July 2012 to July 2015 (January 2005 = 100)

¹ Tourism in Vanuatu is seasonal, and it is difficult to analyse changes in international arrivals and country of residence by looking at the monthly number of arrivals based on an index value of 100 in January 2005. This index allows analysis over time of the real increases and decreases in international air arrivals.

- Visitors index figures for arrivals by air declined by (-12%) in July 2015 over July 2014. (Fig.3)

Fig 4: Index of Visitor Arrivals and Country of Usual Residence, July 2012 to July 2015 (January 2005 = 100)



Note: the vertical axis scale varies in each country chart.

- All three major markets of Australia, New Caledonia and New Zealand declined in index values at (-23%), (-13%) and (-2%) in July 2015 over July 2014.

AVERAGE INTENDED LENGTH OF STAY FOR VISITORS ARRIVING BY AIR

- In July 2015, international visitors arriving by air stayed for an average of 12 days, remaining unchanged over July 2014, also remaining unchanged over June 2015.

AVERAGE AGE FOR VISITORS ARRIVING BY AIR

- Visitor arrivals by air in July 2015 were of average age 41 years, an increase of 1 year over July 2014, also increasing by 8 years over June 2015.

DATA SOURCE

All International arrival statistics by air provided in the report is sourced from completed Arrival and Departure cards at the Department of Immigration. Cruise ship figures are also sourced from the Department of Immigration.

NEXT UPDATE (MONTHLY)	RELEASE DATE
------------------------------	---------------------

August 2015

09th October 2015

PROVINCIAL STATISTICS OFFICES

PO Box 22
Lakatoro, Malekula
MALAMPA PROVINCE

Commercial Center
Lenakel, Tanna
TAFEA PROVINCE

PO Box 8
Saratamata, Ambae
PENAMA PROVINCE

Sola, Vanua Lava
Banks group
TORBA PROVINCE

Millennium Building
Luganville, Santo
SANMA PROVINCE




Andy Calo
Acting Government Statistician

SUMMARY OF VISITORS TO OUTER ISLANDS² (SEE TABLE 7)

Summary of Indicators

- No more than 34% of visitors arriving by air travelled to Sanma province, closely followed by Tafea province at 30% in July 2015.
- In July 2015, visitors travelling to outer islands spent an average of 6 days.

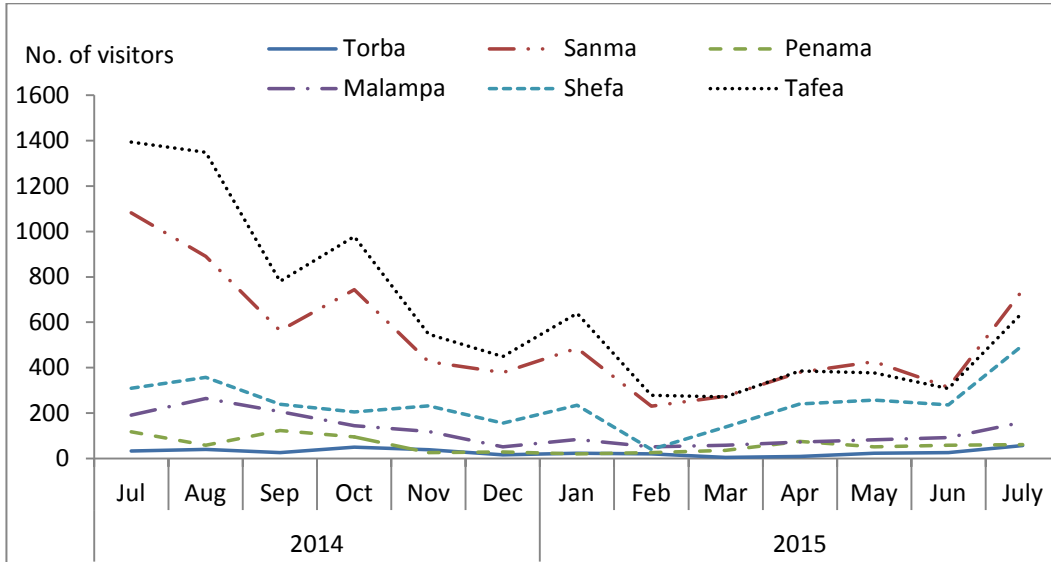


Figure 1: Summary of visitors to other province, July 2014 to July 2015

* Excludes Efate Island

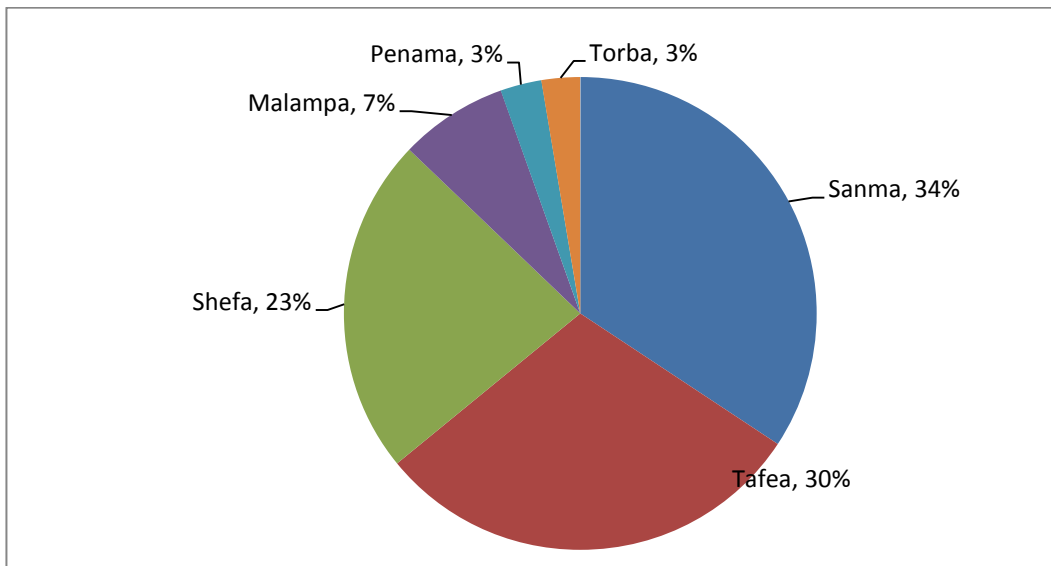


Figure 2: Proportion of visitors to other provinces, July 2015

*Excludes Efate Island

² Data on visitors travelling to outer islands is only available from May 2014

ANNEX 1 – NUMBER OF VISITORS TO OUTER ISLANDS

Table 1: Visitors to outer islands, by province

Year	Month	Province						TOTAL
		Torba	Sanma	Penama	Malampa	Shefa*	Tafea	
2014	Jul	33	1,082	118	191	309	1,393	3,126
	Aug	40	890	59	265	357	1,348	2,959
	Sep	26	563	123	207	239	780	1,938
	Oct	50	744	95	144	205	978	2,216
	Nov	39	426	26	119	232	547	1,389
	Dec	16	379	29	51	156	449	1,080
2015	Jan	24	485	20	84	235	640	1,488
	Feb	20	230	26	52	40	278	646
	Mar	5	274	36	58	139	271	783
	Apr	9	380	75	72	241	386	1,163
	May	24	426	51	83	257	377	1,218
	Jun	26	313	59	92	236	308	1,034
	Jul	57	742	61	160	499	644	2,163

Source: Department of Immigration

*Excludes Efate Island

ANNEX 2 – AVERAGE LENGTH OF STAY FOR VISITORS TO OUTER ISLANDS

Table 2: The average length of stay for visitors travelling to outer islands, by province

Year	Month	Province						TOTAL
		Torba	Sanma	Penama	Malampa	Shefa*	Tafea	
2014	Jul	5.9	5.9	9.8	4.8	1.5	3.7	5.3
	Aug	4.7	5.9	7.5	6.1	2.2	2.5	4.8
	Sep	3.7	7.0	5.0	4.7	3.6	3.1	4.5
	Oct	4.6	5.5	5.1	5.0	3.7	2.8	4.5
	Nov	7.7	6.2	5.1	5.6	2.3	3.3	5.0
	Dec	5.4	6.8	13.6	9.7	1.7	3.4	6.8
2015	Jan	6.8	5.9	5.5	8.6	2.6	2.9	5.4
	Feb	7.3	5.3	7.4	7.5	3.4	2.8	5.6
	Mar	22.4	5.7	27.2	5.8	8.2	3.2	12.1
	Apr	4.0	5.5	2.1	6.8	2.8	5.1	4.2
	May	3.7	6.0	6.1	9.5	9.9	4.2	6.6
	Jun	6.7	5.3	4.1	4.9	3.0	3.5	4.6
	Jul	4.7	6.3	11.8	6.1	4.1	3.5	6.1

Source: Department of Immigration

*Excludes Efate Island

Table 1 : Summary of Overseas Migration
Tableau 1 : Résumé des échanges migratoires avec l'extérieur

Year	Month	ARRIVALS / ARRIVEES						DEPARTURES / DEPARTURES						Cruiseship Arrivals/ Croisiéristes	Année	Mois
		PORT VILA		LUGANVILLE		TOTAL		PORT VILA		LUGANVILLE		TOTAL				
		Residents Résidents	Visitors Visiteurs	Residents Résidents	Visitors Visiteurs	Residents Résidents	Visitors Visiteurs	Resident Résidents	Visitor Visiteurs	Resident Résidents	Visitors Visiteurs	Resident Résidents	Visitors Visiteurs			
2011		21,752	91,107	521	2,853	22,273	93,960	12,958	96,836	156	1,954	13,114	98,790	154,938	2011	
2012		22,594	105,611	364	2,550	22,958	108,161	14,803	113,158	134	2,339	14,937	115,497	213,243	2012	
2013		25,116	106,466	495	3,643	25,611	110,109	16,380	118,753	164	3,496	16,544	122,249	247,296	2013	
2014		25,268	104,471	616	4,337	25,884	108,808	18,705	117,236	375	3,531	19,080	120,767	220,205	2014	
2011	Jul	1,828	10,419	38	310	1,866	10,729	994	11,297	30	277	1,024	11,574	11,411	2011	Juil
2012	Jul	1,869	11,471	21	299	1,890	11,770	995	12,740	14	337	1,009	13,077	18,595	2012	Juil
2013	Jul	2,073	11,390	44	465	2,117	11,855	1,057	12,901	9	412	1,066	13,313	16,759	2013	Juil
	Aug	1,769	10,682	8	115	1,777	10,797	1,265	11,793	2	142	1,267	11,935	13,642		Aoû
	Sep	2,823	11,340	26	256	2,849	11,596	1,073	11,442	20	284	1,093	11,726	15,370		Sep
	Oct	1,739	10,392	34	435	1,773	10,827	928	12,254	10	455	938	12,709	26,805		Oct
	Nov	2,539	7,825	43	298	2,582	8,123	2,070	9,887	17	229	2,087	10,116	19,834		Nov
	Dec	2,682	9,473	68	380	2,750	9,853	1,656	8,720	17	229	1,673	8,949	22,553		Dec
2014	Jan	2,303	8,288	25	159	2,328	8,447	1,393	11,871	10	252	1,403	12,123	23,016	2014	Jan
	Feb	1,491	4,878	49	131	1,540	5,009	2,051	5,763	7	85	2,058	5,848	25,728		Fév
	Mar	1,693	6,169	66	207	1,759	6,376	1,149	7,047	7	208	1,156	7,255	18,883		Mar
	Apr*	1,753	6,433	76	371	1,829	6,804	3,172	7,089	5	351	3,177	7,440	18,880		Avr
	May	2,293	7,483	30	329	2,323	7,812	1,360	8,231	59	218	1,419	8,449	17,869		Mai
	Jun	2,154	10,481	38	436	2,192	10,917	967	9,984	32	355	999	10,339	18,911		Juin
	Jul	2,030	10,944	56	502	2,086	11,446	1,339	12,891	67	341	1,406	13,232	11,470		Juil
	Aug	2,208	11,515	38	350	2,246	11,865	1,311	12,517	81	219	1,392	12,736	14,667		Aoû
	Sep	2,509	10,731	59	557	2,568	11,288	879	10,956	59	557	938	11,513	14,007		Sep
	Oct	1,750	10,017	56	516	1,806	10,533	1,624	12,394	30	426	1,654	12,820	16,195		Oct
	Nov	2,534	7,584	65	412	2,599	7,996	2,068	9,532	14	300	2,082	9,832	10,312		Nov
	Dec	2,550	9,948	58	367	2,608	10,315	1,392	8,961	4	219	1,396	9,180	30,267		Dec
2015	Jan	2,396	8,219	37	305	2,433	8,524	1,547	12,350	53	342	1,600	12,692	26,923	2015	Jan
	Feb	1,575	5,176	9	213	1,584	5,389	2,019	5,978	12	118	2,031	6,096	18,803		Fév
	Mar	1,905	4,527	28	310	1,933	4,837	1,288	5,599	9	153	1,297	5,752	6,530		Mar
	Apr	2,219	4,263	5	315	2,224	4,578	1,463	5,183	11	221	1,474	5,404	7,384		Avr
	May	2,605	5,470	10	317	2,615	5,787	1,557	5,831	9	122	1,566	5,953	13,430		Mai
	Jun	2,012	7,761	54	528	2,066	8,289	1,409	7,005	6	273	1,415	7,278	8,357		Juin
	Jul	2,060	9,727	40	304	2,100	10,031	1,598	10,582	12	284	1,610	10,866	19,023		Juil

Source: Immigration Department/Service de l'Immigration

- Nil or less than half final unit shown / Résultat nul ou inférieur au demi de l'unité indiquée

* there are missing batches with an estimated total of 457 visitors missing, April figures will be revised once the missing flight batches are located.

Table 2 : Visitor Arrivals by Purpose of Visit
Tableau 2 : Arrivées de visiteurs selon le motif du voyage

Year	Month	VISITORS/VISITEURS						Année	Mois
		Holidays	Visiting Friends and relatives	Business, Meetings/ Conferences	Stop Over	Others, Education, sports	Total Visitors		
		Vacances	Visite à des amis et à la famille	Affaires, réunions ou conférence	Escale	Autres, education, sport	Visiteurs global		
2011		75,821	7,320	9,933	790	96	93,960	2011	
2012		88,085	7,910	11,294	602	270	108,161	2012	
2013		89,253	7,755	9,079	613	3,409	110,109	2013	
2014		86,239	7,672	8,007	1,022	5,868	108,808	2014	
2011	Jul	8,799	914	912	87	17	10,729	2011	Juil
2012	Jul	9,877	863	992	32	6	11,770	2012	Juil
2013	Jul	9,819	853	582	89	512	11,855	2013	Juil
	Aug	8,678	767	1,001	59	292	10,797		Aoû
	Sep	9,814	567	847	70	298	11,596		Sep
	Oct	8,806	705	849	82	385	10,827		Oct
	Nov	6,389	566	757	36	375	8,123		Nov
	Dec	8,389	824	392	18	230	9,853		Dec
2014	Jan	7,317	544	335	63	188	8,447	2014	Jan
	Feb	3,773	407	462	47	320	5,009		Fév
	Mar	4,906	406	628	35	401	6,376		Mar
	Apr*	5,593	406	640	11	154	6,804		Avr
	May	6,213	534	776	22	267	7,812		Mai
	Jun	8,865	744	880	52	376	10,917		Juin
	Jul	9,423	830	578	121	494	11,446		Juil
	Aug	9,321	743	882	214	705	11,865		Aoû
	Sep	8,904	699	807	147	731	11,288		Sep
	Oct	8,042	685	851	145	810	10,533		Oct
	Nov	5,816	564	780	162	674	7,996		Nov
	Dec	8,066	1,110	388	3	748	10,315		Dec
2015	Jan	6,846	524	377	11	766	8,524	2015	Jan
	Feb	3,702	461	556	21	649	5,389		Fév
	Mar	1,899	689	988	2	1,259	4,837		Mar
	Apr	2,281	670	709	13	905	4,578		Avr
	May	3,618	607	936	19	607	5,787		Mai
	Jun	5,643	851	761	42	992	8,289		Juin
	Jul	7,771	873	629	47	711	10,031		Juil

Source: Immigration Department/Service de l'Immigration

- Nil or less than half final unit shown / résultat nul ou inférieur au demi de l'unité indiquée

* there are missing batches with an estimated total of 457 visitors missing, April figures will be revised once the missing flight batches are located.

Table 3 : Visitor Arrivals by Usual Country of Residence
Tableau 3 : Arrivées des visiteurs par pays de résidence habituelle

Year	Month	Australia	New Zealand	New Caledonia	Other Pacific Countries	Europe	North America	Japan	China	Other Countries	TOTAL	Année	Mois
		Australie	Nouvelle-Zélande	Nouvelle-Calédonie	Autres Pays du Pacifique		Amérique du Nord	Japon	Chine	Autres pays			
2011		57,843	11,399	11,376	3,397	5,265	1,922	630	581	1,547	93,960	2011	
2012		65,405	14,430	13,138	4,313	5,491	2,094	705	623	1,962	108,161	2012	
2013		65,776	15,068	12,515	4,874	5,544	2,614	659	1,062	1,997	110,109	2013	
2014		60,808	16,293	12,756	6,630	5,591	2,373	763	1,563	2,031	108,808	2014	
2011	Jul	6,222	2,000	1,151	320	540	214	75	51	156	10,729	2011	Juil
2012	Jul	6,937	2,032	1,188	433	633	216	95	82	154	11,770	2012	Juil
2013	Jul	7,091	2,319	805	384	654	217	47	92	246	11,855	2013	Juil
2014	Jan	4,898	679	1,676	284	414	188	42	124	142	8,447	2014	Jan
	Feb	2,608	310	968	357	304	207	33	101	121	5,009		Fév
	Mar	3,907	707	538	462	360	146	48	94	114	6,376		Mar
	Apr*	4,125	984	732	265	368	108	21	123	78	6,804		Avr
	May	4,162	1,350	911	369	404	215	72	110	219	7,812		Mai
	Jun	6,123	1,936	1,191	411	453	306	82	228	187	10,917		Juin
	Jul	6,295	2,513	975	526	544	198	61	126	208	11,446		Juil
	Aug	5,747	2,645	1,137	824	680	315	142	119	256	11,865		Août
	Sep	7,052	1,886	764	655	407	139	55	137	193	11,288		Sep
	Oct	5,652	1,415	1,483	725	659	209	52	130	208	10,533		Oct
	Nov	4,147	947	1,001	882	544	157	53	127	138	7,996		Nov
	Dec	6,092	921	1,380	870	454	185	102	144	167	10,315		Dec
2015	Jan	4,664	693	1,487	619	470	201	59	154	177	8,524	2015	Jan
	Feb	2,479	386	991	504	389	164	53	258	165	5,389		Fév
	Mar	2,335	495	540	482	348	234	74	120	209	4,837		Mar
	Apr	2,116	549	614	428	327	166	63	122	193	4,578		Avr
	May	2,655	870	639	435	589	213	26	158	202	5,787		Mai
	Jun	4,428	1,243	816	583	537	296	33	149	204	8,289		Juin
	Jul	4,842	2,454	845	418	694	336	75	185	182	10,031		Juil

Source: Immigration Department / Service de l'Immigration

* there are missing batches with an estimated total of 457 visitors missing, April figures will be revised once the missing flight batches are located.

Table 4 : Overseas Arrivals of Residents by Nationality**Tableau 4 : Arrivées des résidents par nationalité**

Year	Month	Ni-Vanuatu	Australian Australien	French Français	British Anglais	New Zealander Néo- Zélandais	Asian Asiatiques	Pacific Islanders Autres pays du Pacifique	North Americans Américain du Nord	Other countries Autres pays	TOTAL	Année	Mois
2011		12,508	3,867	1,802	244	1,370	719	1,090	352	321	22,273	2011	
2012		14,317	3,629	1,526	203	1,236	696	686	370	295	22,958	2012	
2013		15,410	4,096	1,782	167	1,293	915	1,007	566	375	25,611	2013	
2014		15,044	4,297	1,934	104	1,274	966	1,161	690	414	25,884	2014	
2011	Jul	894	340	168	22	113	81	182	28	38	1,866	2011	Juil
2012	Jul	1,155	288	185	21	94	44	50	37	16	1,890	2012	Juil
2013	Jul	1,074	390	162	33	112	75	192	41	38	2,117	2013	Juil
2014	Jan	1,071	456	230	4	144	88	195	109	31	2,328	2014	Jan
	Feb	678	319	176	1	100	75	98	67	26	1,540		Fév
	Mar	864	383	139	12	125	76	84	37	39	1,759		Mar
	Apr	1,149	294	111	8	88	56	63	36	24	1,829		Avr
	May	1,472	330	123	9	102	97	99	51	40	2,323		Mai
	Jun	1,312	353	164	15	114	65	80	55	34	2,192		Juin
	Jul	1,185	350	135	10	99	100	121	57	29	2,086		Juil
	Aug	1,213	355	263	11	118	84	88	62	52	2,246		Août
	Sep	1,748	376	107	19	79	86	83	46	24	2,568		Sep
	Oct	825	396	213	5	79	108	87	59	34	1,806		Oct
	Nov	1,713	365	145	10	122	75	83	54	32	2,599		Nov
	Dec	1,814	320	128	0	104	56	80	57	49	2,608		Dec
2015	Jan	1,306	368	220	4	138	94	181	74	48	2,433	2015	Jan
	Feb	814	258	180	0	96	83	80	46	27	1,584		Fév
	Mar	1,033	363	102	2	103	105	81	114	30	1,933		Mar
	Apr	1,290	371	183	3	122	76	89	39	51	2,224		Avr
	May	1,885	293	87	21	101	85	79	39	25	2,615		Mai
	Jun	1,428	283	124	17	62	48	58	23	23	2,066		Juin
	Jul	1,330	292	84	6	94	85	127	34	48	2,100		Juil

Source: Immigration Department / Service de l'Immigration

Table 5 : Visitors Arriving by Air Intended Length of Stay***Tableau 5 : Arrivée des Visiteurs à longue durée de Séjour**

Year	Month	AVERAGE INTENDED LENGTH OF STAY / LA MOYENNE DE LONGUE DUREE DE SEJOUR			Année	Mois
		Port Vila	Luganville	Vanuatu		
2011		8.9	10.9	9.9	2011	
2012		9.8	11.1	10.5	2012	
2013		10.8	11.7	11.3	2013	
2014		9.5	11.5	10.6	2014	
2011	Jul	9.0	10.4	9.7	2011	Juil
2012	Jul	11.4	11.5	11.5	2012	Juil
2013	Jul	10.0	12.0	11.0	2013	Juil
2014	Jan	10.4	13.6	12.0	2014	Jan
	Feb	13.1	16.7	14.9		Fév
	Mar	9.9	9.0	9.5		Mar
	Apr*	9.0	10.8	9.9		Avr
	May	8.8	13.1	11.0		Mai
	Jun	9.2	10.9	10.0		Juin
	Jul	9.9	13.1	11.5		Juil
	Aug	8.8	10.2	9.5		Aoû
	Sep	9.0	9.7	9.3		Sep
	Oct	8.1	8.6	9.3		Oct
	Nov	8.3	9.6	9.0		Nov
	Dec	9.7	13.1	11.4		Dec
2015	Jan	8.9	9.2	9.0	2015	Jan
	Feb	12.5	10.8	11.7		Fév
	Mar	11.5	15.5	13.5		Mar
	Apr	11.1	10.4	10.8		Avr
	May	10.4	14.3	12.3		Mai
	Jun	11.6	11.4	11.5		Juin
	Jul	11.7	12.5	12.1		Juil

Source: Immigration Department/Service de l'Immigration

* there are missing batches with an estimated total of 457 visitors missing, April figures will be revised once the missing flight batches are located.

Table 6 : Visitors Arriving by Air Average Age
Tableau 6 : Arrivée des Visiteurs par Age moyen

Year	Month	AVERAGE AGE OF VISITORS / L'AGE MOYEN DES VISITEURS			Année	Mois
		Port Vila	Luganville	Vanuatu		
2011	Jul	38.3	41.5	39.9	2011	Juil
2012	Jul	38.4	41.0	39.7	2012	Juil
2013	Jul	34.6	41.5	38.0	2013	Juil
2014	Jan	35.1	32.4	33.7	2014	Jan
	Feb	44.8	38.9	41.9		Fév
	Mar	40.1	46.9	43.5		Mar
	Apr*	37.3	40.8	39.0		Avr
	May	41.8	44.3	43.1		Mai
	Jun	38.6	38.3	38.4		Juin
	Jul	37.9	41.2	39.6		Juil
	Aug	39.9	46.1	43.0		Aoû
	Sep	37.5	40.4	38.9		Sep
	Oct	39.2	44.7	38.9		Oct
	Nov	38.9	41.1	40.0		Nov
	Dec	34.3	35.2	34.7		Dec
2015	Jan	33.3	36.2	34.8	2015	Jan
	Feb	39.6	46.4	43.0		Fév
	Mar	39.6	41.2	40.4		Mar
	Apr	38.7	41.7	40.2		Avr
	May	38.8	48.5	43.7		Mai
	Jun	38.0	27.6	32.8		Juin
	Jul	38.1	43.8	41.0		Juil

Source: Immigration Department/Service de l'Immigration

* there are missing batches with an estimated total of 457 visitors missing, April figures will be revised once the missing flight batches are located.

Table 7: Visitors travelling to Outer Islands, Vanuatu

Tableau 7: Les visiteurs en voyage d'Îles Extérieures, Vanuatu

Year	Month	Tanna	Santo	Efate offshore Islands	Pentecost Island	Malekula	Ambrym	Other Islands	TOTAL	Année	Mois
				Efate et les îles côtières	îles Pentecôte	Malicolo		D'autres îles			
2014	May	424	352	148	62	36	33	80	1,135	2014	Mai
2014	Jun	866	694	307	92	62	66	155	2,242		Juin
	Jul	1293	983	355	78	109	78	230	3,126		Juil
	Aug	1235	813	405	26	123	131	226	2,959		Août
	Sept	715	510	257	63	118	86	189	1,938		Sept
	Oct	884	670	228	37	82	57	258	2,216		Oct
	Nov	499	366	255	8	65	51	145	1,389		Nov
	Dec	414	349	189	13	30	19	66	1,080		Dec
2015	Jan	611	420	261	15	56	22	103	1,488	2015	Jan
	Feb	264	208	46	11	27	25	65	646		Fév
	Mar	257	249	139	16	42	12	68	783		Mar
	Apr	351	327	243	59	28	38	117	1,163		Avr
	May	356	366	258	38	31	39	130	1,218		Mai
	Jun	278	273	237	47	52	37	119	1,043		Juin
	Jul	596	628	500	42	83	73	241	2,163		Juil

Source: Department of Immigration

Note: Data on visitors travelling to outer islands is only available from May 2014