



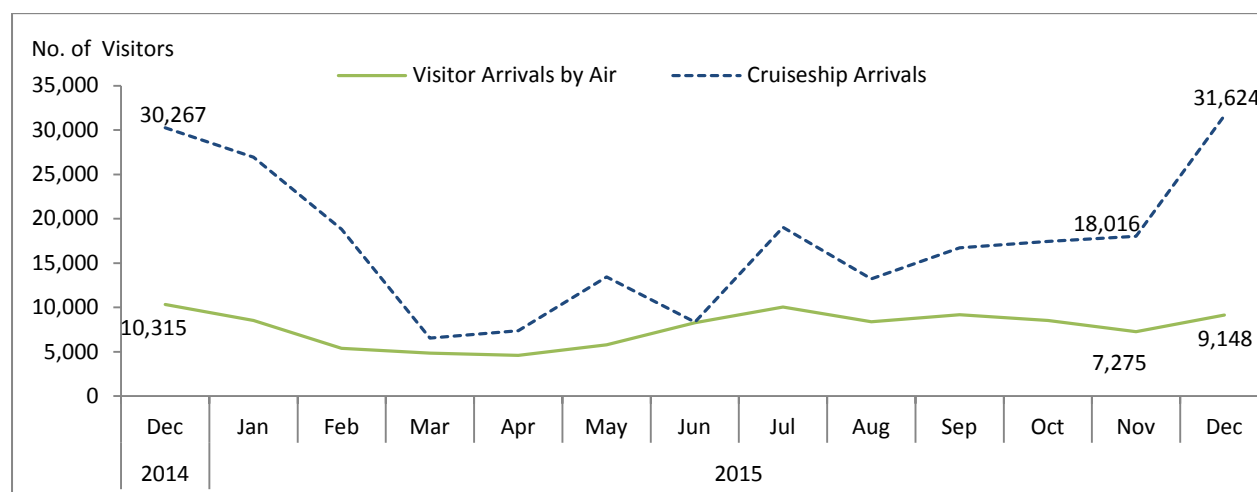
## STATISTICS UPDATE: INTERNATIONAL ARRIVAL STATISTICS

### DECEMBER 2015 HIGHLIGHTS

RELEASE DATE: 03<sup>rd</sup> February 2016

#### OVERVIEW

**Fig 1: International Visitor Arrivals: December 2014 to December 2015**



- In December 2015, International visitor arrivals by air made up 22% of total international visitors to Vanuatu. Visitors by air decreases over December 2014 but an increase over previous month in 2015.
- Visitor arrivals by air stood at 9,148 visitors, a decrease of (-11%) over December 2014. The decline was attributed by the fall in visitors who arrived for holiday purpose in December 2014. Visitors by air increased by 26% in December 2015 when compared to November 2015.
- In December 2015, 12% or 1 in 9 visitors by air travelled to outer islands.
- Cruise ship or day visitors made up 78% of total international Visitors to Vanuatu in December 2015. The total number of day visitors stood at 31,624 visitors arriving on 15 different cruise ships. It increased by 4% when compared to the same period in 2014 and 76% over the previous month.

#### CONTENTS

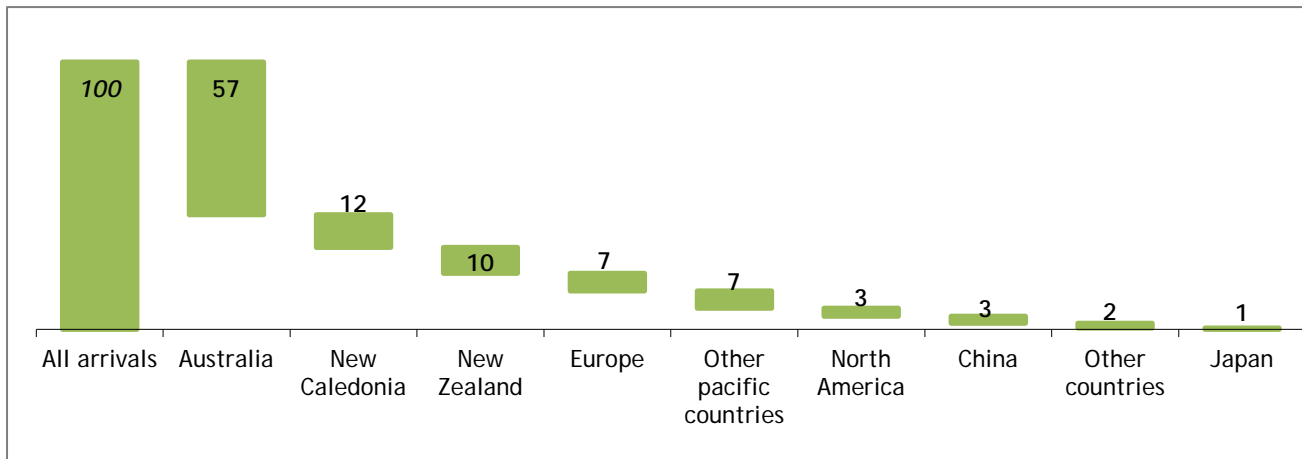
	Page #
<b>HIGHLIGHTS</b>	<b>1-4</b>
<b>ANNEX 1-2</b>	<b>6</b>
<b>TABLES:</b>	
<b>1: Summary of Overseas migration</b>	<b>7</b>
<b>2: Visitors by Purpose of Visit</b>	<b>8</b>
<b>3: Visitors by Country of Usual Residence</b>	<b>9</b>
<b>4: Resident arrivals by Nationality</b>	<b>10</b>
<b>5: Visitors by air, Intended length of stay</b>	<b>11</b>
<b>6: Visitors by air, Average age</b>	<b>12</b>
<b>7: Visitors to Outer islands</b>	<b>13</b>

PURPOSE OF VISIT FOR VISITORS ARRIVING BY AIR

- Holiday visitors accounted for 78% of visitors arriving by air in December 2015. Visitors arriving to visit friends and relatives made up 11%, visitors arriving for business made up 6%, visitors arriving for education or sports made up 5%, while visitors on transit made up less than 1%.

COUNTRY OF USUAL RESIDENCE FOR VISITORS ARRIVING BY AIR

Fig 2: Percentage share of visitors in December 2015 by Country of Usual Residence

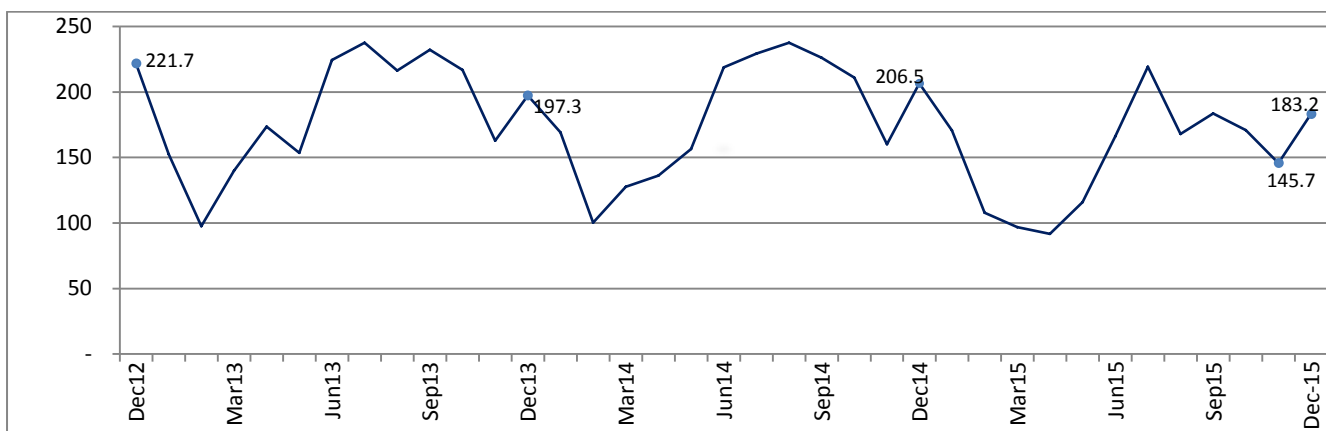


- Australian visitors continued to make up the highest number of visitors arriving by air at 57%, followed by New Caledonians at 12%, New Zealanders at 10%, Europeans and others pacific countries at 7% each, Chinese visitors and North Americans at 3% each, visitors from other countries at 2% and Japanese visitors at 1%.

VISITOR ARRIVAL INDEX<sup>1</sup>

Figure 3 shows the total number of visitor arrivals and arrivals from Australia, New Zealand, New Caledonia and all other countries combined to show trends in arrivals, with the number of visitors.

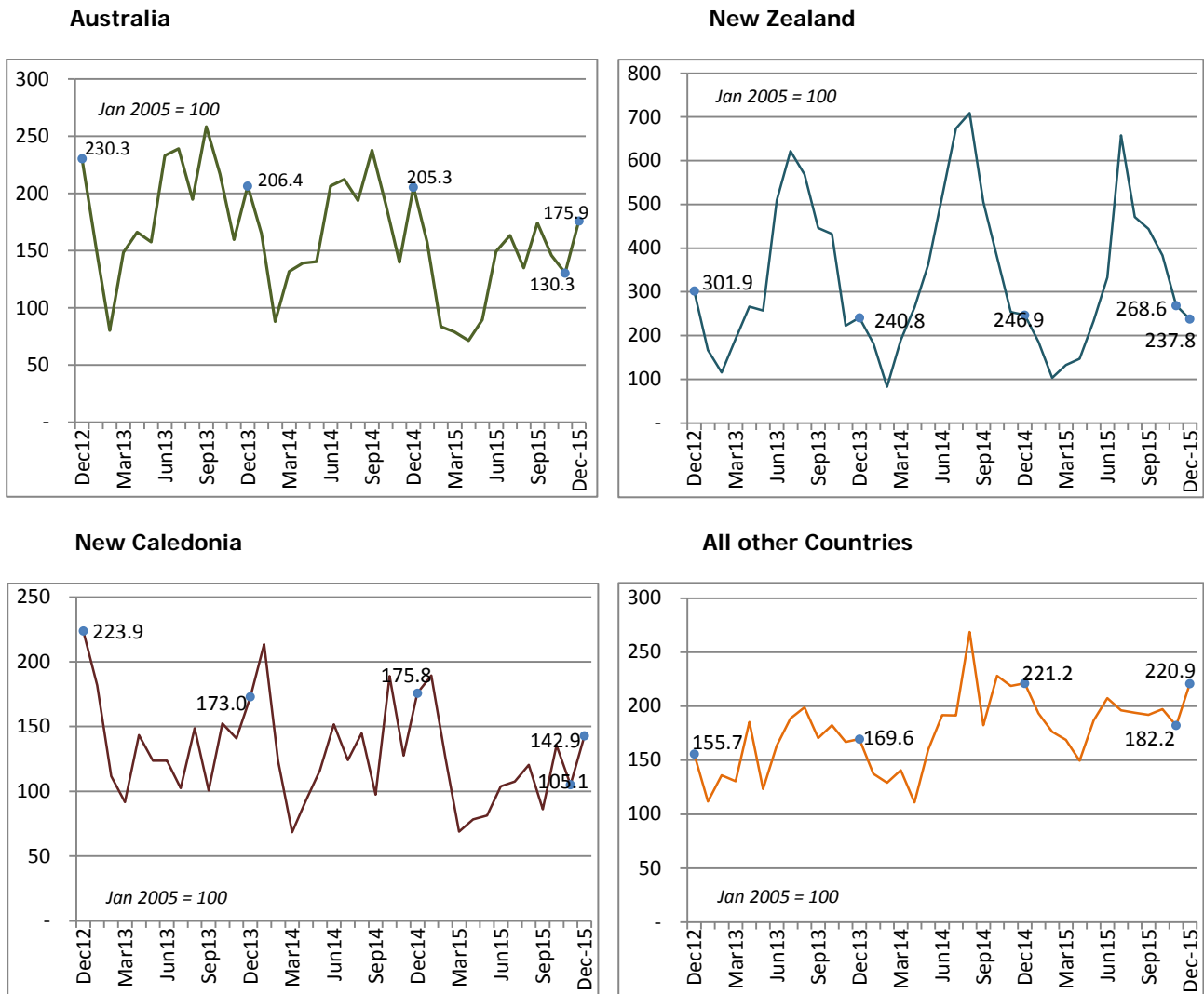
Fig 3: Index of Total Air Visitor Arrivals, December 2012 to December 2015 (January 2005 = 100)



<sup>1</sup> Tourism in Vanuatu is seasonal, and it is difficult to analyse changes in international arrivals and country of residence by looking at the monthly number of arrivals based on an index value of 100 in January 2005. This index allows analysis over time of the real increases and decreases in international air arrivals.

- In December 2015, index values for all visitors arrivals decreased by 11% over December 2014. (Fig.3)

**Fig 4: Index of Visitor Arrivals and Country of Usual Residence, December 2012 to December 2015 (January 2005 = 100)**



Note: the vertical axis scale varies in each country chart.

- In December 2015, the New Caledonian, Australian and New Zealand market decreased in index values at (-19%), (-14%) and (-4%) in index values respectively over December 2014.

**AVERAGE INTENDED LENGTH OF STAY FOR VISITORS ARRIVING BY AIR**

- The international Visitors arrivals in December 2015 spent an average of 11 days, which remained unchanged over December 2014, however it increased by 1 day over previous month.

**AVERAGE AGE FOR VISITORS ARRIVING BY AIR**

- In December 2015, the average age of visitors arriving by air stood at 38 years, an increase of 3 year over December 2014. The average age of visitors decreased by 3 years over the previous month.

**DATA SOURCE**

All International arrival statistics by air provided in the report is sourced from completed Arrival and Departure cards at the Department of Immigration. Cruise ship figures are also sourced from the Department of Immigration.

**NEXT UPDATE (MONTHLY)**

**RELEASE DATE**

January 2016

10<sup>th</sup> March 2016

**PROVINCIAL STATISTICS OFFICES**

PO Box 22  
Lakatoro, Malekula  
MALAMPA PROVINCE

Commercial Center  
Lenakel, Tanna  
TAFEA PROVINCE

PO Box 8  
Saratamata, Ambae  
PENAMA PROVINCE

Sola, Vanua Lava  
Banks group  
TORBA PROVINCE

Millennium Building  
Luganville, Santo  
SANMA PROVINCE




**Mr Andy Calo**  
**Acting Government Statistician**

SUMMARY OF VISITORS TO OUTER ISLANDS<sup>2</sup> (SEE TABLE 7)

Summary of Indicators

- In December 2015, 38% of visitors by air travelled to Sanma Province followed by Tafea province at 35%.
- Visitors by air spent an average of 6 days in the outer islands in December 2015.

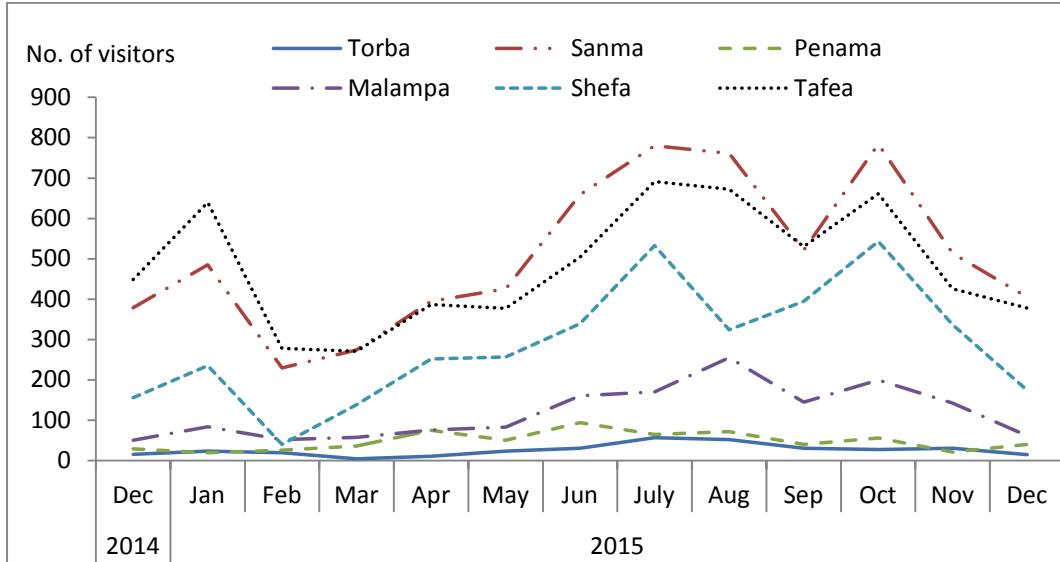


Figure 1: Summary of visitors to other province, December 2014 to December 2015

\* Excludes Efate Island

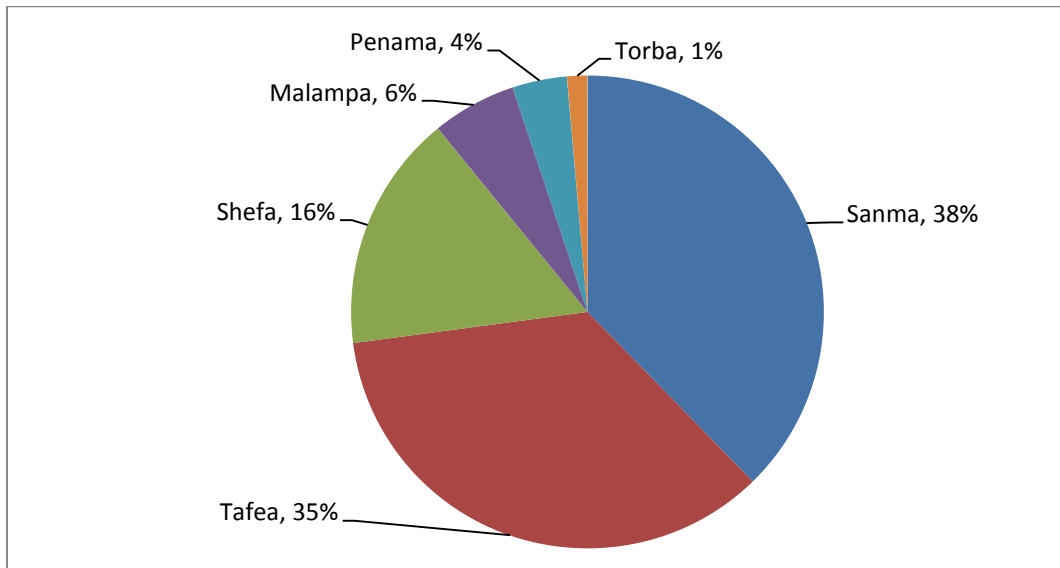


Figure 2: Proportion of visitors to other provinces, December 2015

\*Excludes Efate Island

<sup>2</sup> Data on visitors travelling to outer islands is only available from May 2014

## ANNEX 1 – NUMBER OF VISITORS TO OUTER ISLANDS

Table 1: Visitors to outer islands, by province

Year	Month	Province						TOTAL
		Torba	Sanma	Penama	Malampa	Shefa*	Tafea	
2014	Oct	50	744	95	144	205	978	2,216
	Nov	39	426	26	119	232	547	1,389
	Dec	16	379	29	51	156	449	1,080
2015	Jan	24	485	20	84	235	640	1,488
	Feb	20	230	26	52	40	278	646
	Mar	5	274	36	58	139	271	783
	Apr	9	380	75	72	241	386	1,163
	May	24	426	51	83	257	377	1,218
	Jun	26	313	59	92	236	308	1,034
	Jul	57	742	61	160	499	644	2,163
	Aug	52	761	72	255	324	672	2,136
	Sep	32	522	40	145	395	530	1,663
	Oct	28	784	56	200	543	661	2,272
	Nov	31	514	21	143	337	426	1,472
	Dec	15	405	40	62	174	378	1,074

Source: Department of Immigration

\*Excludes Efate Island

## ANNEX 2 – AVERAGE LENGTH OF STAY FOR VISITORS TO OUTER ISLANDS

Table 2: The average length of stay for visitors travelling to outer islands, by province

Year	Month	Province						TOTAL
		Torba	Sanma	Penama	Malampa	Shefa*	Tafea	
2014	Oct	4.6	5.5	5.1	5.0	3.7	2.8	4.5
	Nov	7.7	6.2	5.1	5.6	2.3	3.3	5.0
	Dec	5.4	6.8	13.6	9.7	1.7	3.4	6.8
2015	Jan	6.8	5.9	5.5	8.6	2.6	2.9	5.4
	Feb	7.3	5.3	7.4	7.5	3.4	2.8	5.6
	Mar	22.4	5.7	27.2	5.8	8.2	3.2	12.1
	Apr	4.0	5.5	2.1	6.8	2.8	5.1	4.2
	May	3.7	6.0	6.1	9.5	9.9	4.2	6.6
	Jun	6.7	5.3	4.1	4.9	3.0	3.5	4.6
	Jul	4.7	6.3	11.8	6.1	4.1	3.5	6.1
	Aug	11.0	8.7	18.1	9.9	3.2	4.6	9.3
	Sep	6.9	6.3	19.3	9.3	4.3	3.3	8.2
	Oct	7.3	5.9	5.0	6.3	4.5	2.9	5.3
	Nov	11.5	6.3	12.4	7.6	4.1	4.0	7.6
	Dec	6.5	9.7	5.3	6.6	3.9	4.9	6.2

Source: Department of Immigration

\*Excludes Efate Island

**Table 1 : Summary of Overseas Migration**  
**Tableau 1 : Résumé des échanges migratoires avec l'extérieur**

Year	Month	ARRIVALS / ARRIVEES						DEPARTURES / DEPARTURES						Cruiseship Arrivals/ Croisiéristes	Année	Mois
		PORT VILA		LUGANVILLE		TOTAL		PORT VILA		LUGANVILLE		TOTAL				
		Residents Résidents	Visitors Visiteurs	Residents Résidents	Visitors Visiteurs	Residents Résidents	Visitors Visiteurs	Resident Résidents	Visitor Visiteurs	Resident Résidents	Visitors Visiteurs	Resident Résidents	Visitors Visiteurs			
2011		21,752	91,107	521	2,853	22,273	93,960	12,958	96,836	156	1,954	13,114	98,790	154,938	2011	
2012		22,594	105,611	364	2,550	22,958	108,161	14,803	113,158	134	2,339	14,937	115,497	213,243	2012	
2013		25,116	106,466	495	3,643	25,611	110,109	16,380	118,753	164	3,496	16,544	122,249	247,296	2013	
2014		25,268	104,471	616	4,337	25,884	108,808	18,705	117,236	375	3,531	19,080	120,767	220,205	2014	
2015		26,655	85,527	307	4,425	26,962	89,952	19,116	95,301	161	3,030	19,277	98,331	197,471	2015	
2011	Dec	1,797	9,255	42	367	1,839	9,622	1,201	9,700	16	203	1,217	9,903	7,511	2011	Dec
2012	Dec	1,448	10,154	31	251	1,479	10,405	975	10,726	10	215	985	10,941	9,581	2012	Dec
2013	Dec	1,769	10,682	8	115	1,777	10,797	1,265	11,793	2	142	1,267	11,935	13,642	2013	Dec
2014	Jan	2,303	8,288	25	159	2,328	8,447	1,393	11,871	10	252	1,403	12,123	23,016	2014	Jan
	Feb	1,491	4,878	49	131	1,540	5,009	2,051	5,763	7	85	2,058	5,848	25,728		Fév
	Mar	1,693	6,169	66	207	1,759	6,376	1,149	7,047	7	208	1,156	7,255	18,883		Mar
	Apr*	1,753	6,433	76	371	1,829	6,804	3,172	7,089	5	351	3,177	7,440	18,880		Avr
	May	2,293	7,483	30	329	2,323	7,812	1,360	8,231	59	218	1,419	8,449	17,869		Mai
	Jun	2,154	10,481	38	436	2,192	10,917	967	9,984	32	355	999	10,339	18,911		Juin
	Jul	2,030	10,944	56	502	2,086	11,446	1,339	12,891	67	341	1,406	13,232	11,470		Juil
	Aug	2,208	11,515	38	350	2,246	11,865	1,311	12,517	81	219	1,392	12,736	14,667		Aoû
	Sep	2,509	10,731	59	557	2,568	11,288	879	10,956	59	557	938	11,513	14,007		Sep
	Oct	1,750	10,017	56	516	1,806	10,533	1,624	12,394	30	426	1,654	12,820	16,195		Oct
	Nov	2,534	7,584	65	412	2,599	7,996	2,068	9,532	14	300	2,082	9,832	10,312		Nov
	Dec	2,550	9,948	58	367	2,608	10,315	1,392	8,961	4	219	1,396	9,180	30,267		Dec
2015	Jan	2,396	8,219	37	305	2,433	8,524	1,547	12,350	53	342	1,600	12,692	26,923	2015	Jan
	Feb	1,575	5,176	9	213	1,584	5,389	2,019	5,978	12	118	2,031	6,096	18,803		Fév
	Mar	1,905	4,527	28	310	1,933	4,837	1,288	5,599	9	153	1,297	5,752	6,530		Mar
	Apr	2,219	4,263	5	315	2,224	4,578	1,463	5,183	11	221	1,474	5,404	7,384		Avr
	May	2,605	5,470	10	317	2,615	5,787	1,557	5,831	9	122	1,566	5,953	13,430		Mai
	Jun	2,012	7,761	54	528	2,066	8,289	1,409	7,005	6	273	1,415	7,278	8,357		Juin
	Jul	2,060	9,727	40	304	2,100	10,031	1,703	11,070	12	284	1,715	11,354	19,023		Juil
	Aug	2,054	8,022	21	368	2,075	8,390	1,163	7,393	13	412	1,176	7,805	13,223		Aoû
	Sep	2,766	8,712	9	459	2,775	9,171	1,234	8,817	3	155	1,237	8,972	16,708		Sep
	Oct	1,951	8,115	26	418	1,977	8,533	2,038	10,177	17	400	2,055	10,577	17,450		Oct
	Nov	2,598	6,919	13	356	2,611	7,275	2,224	7,774	15	275	2,239	8,049	18,016		Nov
	Dec	2,514	8,616	55	532	2,569	9,148	1,471	8,124	1	275	1,472	8,399	31,624		Dec

Source: Immigration Department/Service de l'Immigration

- Nil or less than half final unit shown / Résultat nul ou inférieur au demi de l'unité indiquée

\* there are missing batches with an estimated total of 457 visitors missing, April figures will be revised once the missing flight batches are located.

**Table 2 : Visitor Arrivals by Purpose of Visit**  
**Tableau 2 : Arrivées de visiteurs selon le motif du voyage**

Year	Month	VISITORS/VISITEURS						Année	Mois
		Holidays	Visiting Friends and relatives	Business, Meetings/ Conferences	Stop Over	Others, Education, sports	Total Visitors		
		Vacances	Visite à des amis et à la famille	Affaires, réunions ou conférence	Escale	Autres, education, sport	Visiteurs global		
2011		75,821	7,320	9,933	790	96	93,960	2011	
2012		88,085	7,910	11,294	602	270	108,161	2012	
2013		89,253	7,755	9,079	613	3,409	110,109	2013	
2014		86,239	7,672	8,007	1,022	5,868	108,808	2014	
2015		63,625	8,495	8,687	336	8,809	89,952	2015	
2011	Dec	7,749	628	1,153	66	26	9,622	2011	Dec
2012	Dec	8,776	638	929	55	7	10,405	2012	Dec
2013	Dec	8,678	767	1,001	59	292	10,797	2013	Dec
2014	Jan	7,317	544	335	63	188	8,447	2014	Jan
	Feb	3,773	407	462	47	320	5,009		Fév
	Mar	4,906	406	628	35	401	6,376		Mar
	Apr*	5,593	406	640	11	154	6,804		Avr
	May	6,213	534	776	22	267	7,812		Mai
	Jun	8,865	744	880	52	376	10,917		Juin
	Jul	9,423	830	578	121	494	11,446		Juil
	Aug	9,321	743	882	214	705	11,865		Aoû
	Sep	8,904	699	807	147	731	11,288		Sep
	Oct	8,042	685	851	145	810	10,533		Oct
	Nov	5,816	564	780	162	674	7,996		Nov
	Dec	8,066	1,110	388	3	748	10,315		Dec
2015	Jan	6,846	524	377	11	766	8,524	2015	Jan
	Feb	3,702	461	556	21	649	5,389		Fév
	Mar	1,899	689	988	2	1,259	4,837		Mar
	Apr	2,281	670	709	13	905	4,578		Avr
	May	3,618	607	936	19	607	5,787		Mai
	Jun	5,643	851	761	42	992	8,289		Juin
	Jul	7,771	873	629	47	711	10,031		Juil
	Aug	6,154	796	831	35	574	8,390		Aoû
	Sep	6,956	712	836	59	608	9,171		Sep
	Oct	6,468	694	704	30	637	8,533		Oct
	Nov	5,147	637	809	40	642	7,275		Nov
	Dec	7,140	981	551	17	459	9,148		Dec

Source: Immigration Department/Service de l'Immigration

- Nil or less than half final unit shown / résultat nul ou inférieur au demi de l'unité indiquée  
 \* there are missing patches with an estimated total of 45 / visiteurs missing, April figures will be revised once the missing flight patches are located.



**Table 3 : Visitor Arrivals by Usual Country of Residence**  
**Tableau 3 : Arrivées des visiteurs par pays de résidence habituelle**

Year	Month	Australia	New Zealand	New Caledonia	Other Pacific Countries	Europe	North America	Japan	China	Other Countries	TOTAL	Année	Mois
		Australie	Nouvelle-Zélande	Nouvelle-Calédonie	Autres Pays du Pacifique		Amérique du Nord	Japon	Chine	Autres pays			
2011		57,843	11,399	11,376	3,397	5,265	1,922	630	581	1,547	93,960	2011	
2012		65,405	14,430	13,138	4,313	5,491	2,094	705	623	1,962	108,161	2012	
2013		65,776	15,068	12,515	4,874	5,544	2,614	659	1,062	1,997	110,109	2013	
2014		60,808	16,293	12,756	6,630	5,591	2,373	763	1,563	2,031	108,808	2014	
2015		46,098	13,422	10,567	5,953	5,839	2,962	633	2,186	2,292	89,952	2015	
2011	Dec	5,090	1,835	1,088	313	760	198	91	74	173	9,622	2011	Dec
2012	Dec	6,043	2,049	928	298	646	181	58	52	150	10,405	2012	Dec
2013	Dec	5,781	2,121	1,167	444	672	245	88	108	171	10,797	2013	Dec
2014	Jan	4,898	679	1,676	284	414	188	42	124	142	8,447	2014	Jan
	Feb	2,608	310	968	357	304	207	33	101	121	5,009		Fév
	Mar	3,907	707	538	462	360	146	48	94	114	6,376		Mar
	Apr*	4,125	984	732	265	368	108	21	123	78	6,804		Avr
	May	4,162	1,350	911	369	404	215	72	110	219	7,812		Mai
	Jun	6,123	1,936	1,191	411	453	306	82	228	187	10,917		Juin
	Jul	6,295	2,513	975	526	544	198	61	126	208	11,446		Juil
	Aug	5,747	2,645	1,137	824	680	315	142	119	256	11,865		Août
	Sep	7,052	1,886	764	655	407	139	55	137	193	11,288		Sep
	Oct	5,652	1,415	1,483	725	659	209	52	130	208	10,533		Oct
	Nov	4,147	947	1,001	882	544	157	53	127	138	7,996		Nov
	Dec	6,092	921	1,380	870	454	185	102	144	167	10,315		Dec
2015	Jan	4,664	693	1,487	619	470	201	59	154	177	8,524	2015	Jan
	Feb	2,479	386	991	504	389	164	53	258	165	5,389		Fév
	Mar	2,335	495	540	482	348	234	74	120	209	4,837		Mar
	Apr	2,116	549	614	428	327	166	63	122	193	4,578		Avr
	May	2,655	870	639	435	589	213	26	158	202	5,787		Mai
	Jun	4,428	1,243	816	583	537	296	33	149	204	8,289		Juin
	Jul	4,842	2,454	845	418	694	336	75	185	182	10,031		Juil
	Aug	4,000	1,758	946	483	468	263	52	239	181	8,390		Août
	Sep	5,170	1,656	677	419	496	235	62	206	250	9,171		Sep
	Oct	4,325	1,429	1,065	514	521	303	44	142	190	8,533		Oct
	Nov	3,865	1,002	825	470	403	274	43	219	174	7,275		Nov
	Dec	5,219	887	1,122	598	597	277	49	234	165	9,148		Dec

Source: Immigration Department / Service de l'Immigration

\* there are missing batches with an estimated total of 457 visitors missing, April figures will be revised once the missing flight batches are located.

**Table 4 : Overseas Arrivals of Residents by Nationality****Tableau 4 : Arrivées des résidents par nationalité**

Year	Month	Ni-Vanuatu	Australian Australien	French Français	British Anglais	New Zealand Néo- Zélandais	Asian Asiatiques	Pacific Islanders Autres pays du Pacifique	North Americans Américain du Nord	Other countries Autres pays	TOTAL	Année	Mois
2011		12,508	3,867	1,802	244	1,370	719	1,090	352	321	22,273	2011	
2012		14,317	3,629	1,526	203	1,236	696	686	370	295	22,958	2012	
2013		15,410	4,096	1,782	167	1,293	915	1,007	566	375	25,611	2013	
2014		15,044	4,297	1,934	104	1,274	966	1,161	690	414	25,884	2014	
2015		17,406	3,557	1,672	95	1,206	1,008	1,045	569	404	26,962	2015	
2011	Dec	1,030	327	144	12	130	58	87	28	23	1,839	2011	Dec
2012	Dec	814	282	105	18	90	51	47	41	31	1,479	2012	Dec
2013	Dec	1,014	302	138	5	90	75	67	56	30	1,777	2013	Dec
2014	Jan	1,071	456	230	4	144	88	195	109	31	2,328	2014	Jan
	Feb	678	319	176	1	100	75	98	67	26	1,540		Fév
	Mar	864	383	139	12	125	76	84	37	39	1,759		Mar
	Apr	1,149	294	111	8	88	56	63	36	24	1,829		Avr
	May	1,472	330	123	9	102	97	99	51	40	2,323		Mai
	Jun	1,312	353	164	15	114	65	80	55	34	2,192		Juin
	Jul	1,185	350	135	10	99	100	121	57	29	2,086		Juil
	Aug	1,213	355	263	11	118	84	88	62	52	2,246		Aoû
	Sep	1,748	376	107	19	79	86	83	46	24	2,568		Sep
	Oct	825	396	213	5	79	108	87	59	34	1,806		Oct
	Nov	1,713	365	145	10	122	75	83	54	32	2,599		Nov
	Dec	1,814	320	128	0	104	56	80	57	49	2,608		Dec
2015	Jan	1,306	368	220	4	138	94	181	74	48	2,433	2015	Jan
	Feb	814	258	180	0	96	83	80	46	27	1,584		Fév
	Mar	1,033	363	102	2	103	105	81	114	30	1,933		Mar
	Apr	1,290	371	183	3	122	76	89	39	51	2,224		Avr
	May	1,885	293	87	21	101	85	79	39	25	2,615		Mai
	Jun	1,428	283	124	17	62	48	58	23	23	2,066		Juin
	Jul	1,330	292	84	6	94	85	127	34	48	2,100		Juil
	Aug	1,250	270	179	4	104	92	84	54	38	2,075		Aoû
	Sep	2,155	233	86	6	85	76	69	32	33	2,775		Sep
	Oct	1,189	267	149	12	118	92	69	50	31	1,977		Oct
	Nov	1,845	306	141	11	103	78	73	22	32	2,611		Nov
	Dec	1,881	253	137	9	80	94	55	42	18	2,569		Dec

Source: Immigration Department / Service de l'Immigration

**Table 5 : Visitors Arriving by Air Intended Length of Stay\*****Tableau 5 : Arrivée des Visiteurs à longue durée de Séjour**

Year	Month	AVERAGE INTENDED LENGTH OF STAY / LA MOYENNE DE LONGUE DUREE DE SEJOUR			Année	Mois
		Port Vila	Luganville	Vanuatu		
2011		8.9	10.9	9.9	2011	
2012		9.8	11.1	10.5	2012	
2013		10.8	11.6	11.2	2013	
2014		9.5	11.5	10.6	2014	
2015		10.5	11.7	11.1	2015	
2011	Dec	9.0	10.8	9.9	2011	Dec
2012	Dec	10.4	10.5	10.5	2012	Dec
2013	Dec	9.5	13.2	11.3	2013	Dec
2014	Jan	10.4	13.6	12.0	2014	Jan
	Feb	13.1	16.7	14.9		Fév
	Mar	9.9	9.0	9.5		Mar
	Apr*	9.0	10.8	9.9		Avr
	May	8.8	13.1	11.0		Mai
	Jun	9.2	10.9	10.0		Juin
	Jul	9.9	13.1	11.5		Juil
	Aug	8.8	10.2	9.5		Aoû
	Sep	9.0	9.7	9.3		Sep
	Oct	8.1	8.6	9.3		Oct
	Nov	8.3	9.6	9.0		Nov
	Dec	9.7	13.1	11.4		Dec
2015	Jan	8.9	9.2	9.0	2015	Jan
	Feb	12.5	10.8	11.7		Fév
	Mar	11.5	15.5	13.5		Mar
	Apr	11.1	10.4	10.8		Avr
	May	10.4	14.3	12.3		Mai
	Jun	11.6	11.4	11.5		Juin
	Jul	11.7	12.5	12.1		Juil
	Aug	10.5	10.9	10.7		Aoû
	Sep	9.5	10.8	10.2		Sep
	Oct	9.5	11.6	10.5		Oct
	Nov	8.9	10.3	9.6		Nov
	Dec	10.2	12.4	11.3		Dec

Source: Immigration Department/Service de l'Immigration

\* there are missing batches with an estimated total of 457 visitors missing, April figures will be revised once the missing flight batches are located.

**Table 6 : Visitors Arriving by Air Average Age**  
**Tableau 6 : Arrivée des Visiteurs par Age moyen**

Year	Month	AVERAGE AGE OF VISITORS / L'AGE MOYEN DES VISITEURS			Année	Mois
		Port Vila	Luganville	Vanuatu		
2011	Dec	41.4	36.7	39.0	2011	Dec
2012	Dec	41.5	46.5	44.0	2012	Dec
2013	Dec	38.1	43.7	40.9	2013	Dec
2014	Jan	35.1	32.4	33.7	2014	Jan
	Feb	44.8	38.9	41.9		Fév
	Mar	40.1	46.9	43.5		Mar
	Apr*	37.3	40.8	39.0		Avr
	May	41.8	44.3	43.1		Mai
	Jun	38.6	38.3	38.4		Juin
	Jul	37.9	41.2	39.6		Juil
	Aug	39.9	46.1	43.0		Août
	Sep	37.5	40.4	38.9		Sep
	Oct	39.2	44.7	38.9		Oct
	Nov	38.9	41.1	40.0		Nov
	Dec	34.3	35.2	34.7		Dec
2015	Jan	33.3	36.2	34.8	2015	Jan
	Feb	39.6	46.4	43.0		Fév
	Mar	39.6	41.2	40.4		Mar
	Apr	38.7	41.7	40.2		Avr
	May	38.8	48.5	43.7		Mai
	Jun	38.0	27.6	32.8		Juin
	Jul	38.1	43.8	41.0		Juil
	Aug	40.7	45.5	43.1		Août
	Sep	37.6	40.1	38.8		Sep
	Oct	37.2	42.4	39.8		Oct
	Nov	39.9	41.6	40.7		Nov
	Dec	39.9	36.2	38.0		Dec

Source: Immigration Department/Service de l'Immigration

\* there are missing batches with an estimated total of 457 visitors missing, April figures will be revised once the missing flight batches are located.

**Table 7: Visitors travelling to Outer Islands, Vanuatu**

**Tableau 7: Les visiteurs en voyage d'Îles Extérieures, Vanuatu**

Year	Month	Tanna	Santo	Efate offshore Islands	Pentecost Island	Malekula	Ambrym	Other Islands	TOTAL	Année	Mois
				Efate et les îles côtières	îles Pentecôte	Malicolo		D'autres îles			
2014		6,330	4,737	2,144	379	625	521	1,349	16,085	2014	
2015		5,532	5,332	3,593	338	782	619	1,803	17,999	2015	
	2014 May	424	352	148	62	36	33	80	1,135	2014	Mai
	Jun	866	694	307	92	62	66	155	2,242		Juin
	Jul	1293	983	355	78	109	78	230	3,126		Juil
	Aug	1235	813	405	26	123	131	226	2,959		Aoû
	Sept	715	510	257	63	118	86	189	1,938		Sept
	Oct	884	670	228	37	82	57	258	2,216		Oct
	Nov	499	366	255	8	65	51	145	1,389		Nov
	Dec	414	349	189	13	30	19	66	1,080		Dec
	2015 Jan	611	420	261	15	56	22	103	1,488	2015	Jan
	Feb	264	208	46	11	27	25	65	646		Fév
	Mar	257	249	139	16	42	12	68	783		Mar
	Apr	351	327	243	59	28	38	117	1,163		Avr
	May	356	366	258	38	31	39	130	1,218		Mai
	Jun	461	559	339	75	90	58	206	1,788		Juin
	Jul	634	663	534	43	87	79	256	2,296		Juil
	Aug	649	659	324	24	149	95	236	2,136		Aoû
	Sep	515	458	395	14	88	54	139	1,663		Sep
	Oct	650	649	543	24	76	116	214	2,272		Oct
	Nov	415	441	337	9	65	63	142	1,472		Nov
	Dec	369	333	174	10	43	18	127	1,074		Dec

Source: Department of Immigration

Note: Data on visitors travelling to outer islands is only available from May 2014