

STATISTICS UPDATE: OVERSEAS TRADE

SEPTEMBER 2012 HIGHLIGHTS

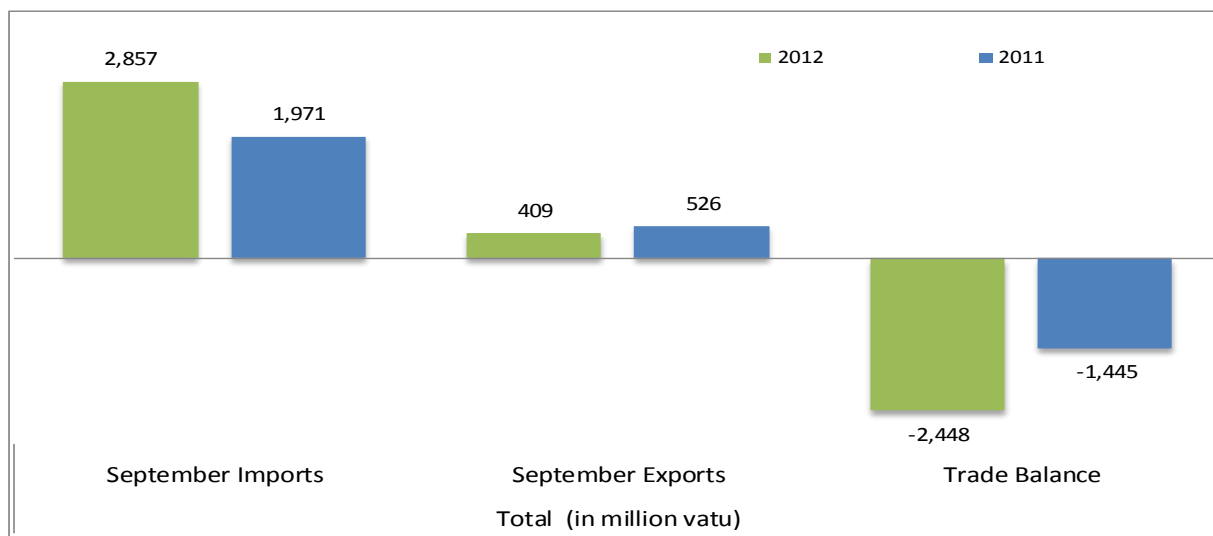


Figure 1: Terms of trade September 2012 and September 2011 (million vatu)

According to September 2012 trade statistics; Vanuatu’s trade deficit stood at vatu 2,448 million indicating a deterioration of vatu 1,003 million compared to September 2011. Total imports increased by 45% from vatu 1,971 million in September 2011 to vatu 2,857 million. This deterioration was caused by a 36% increase in imports for home consumption from vatu 1,955 million to vatu 2,654 million over the month of September 2011.

The value of domestic exports decreased by 22% in September 2012 to vatu 409 million from vatu 526 million over September 2011. This decrease was attributable to the decreased value of copra, beef and kava exports.

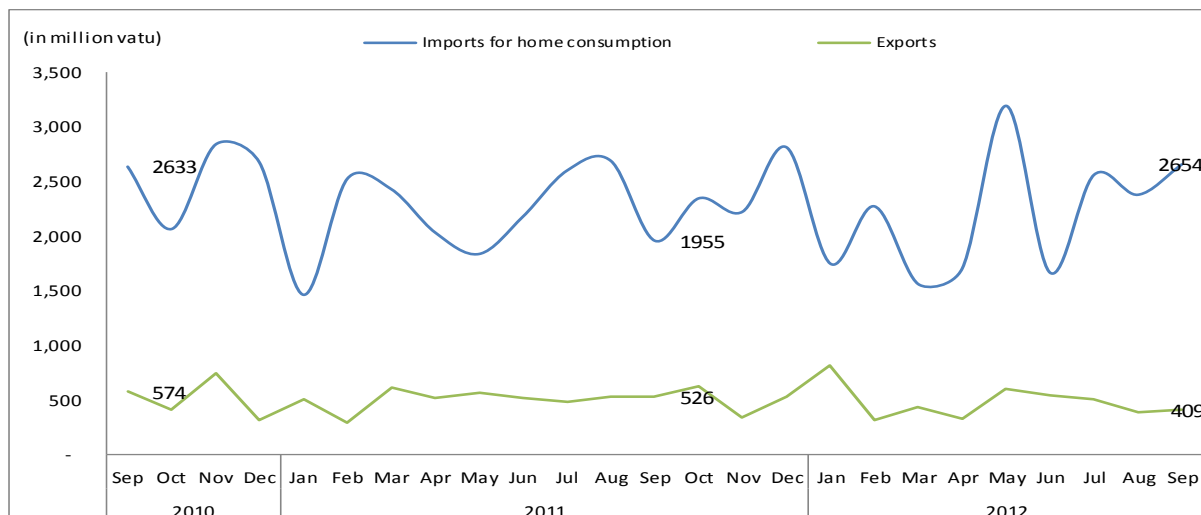


Figure 2: Overseas trade exports and imports (million vatu)

EXPORTS

In September 2012, for the main export commodities, coconut oil registered the largest share in value at 34% followed by kava 14%, copra 12%, cocoa 9%, beef 8%, fish 6% and other products 7%, while the rest of the export group make up less than 2% each. Other products were comprised of food supplements, waste and scrap metals and personal effects. (See attached Table 2, Table 3)

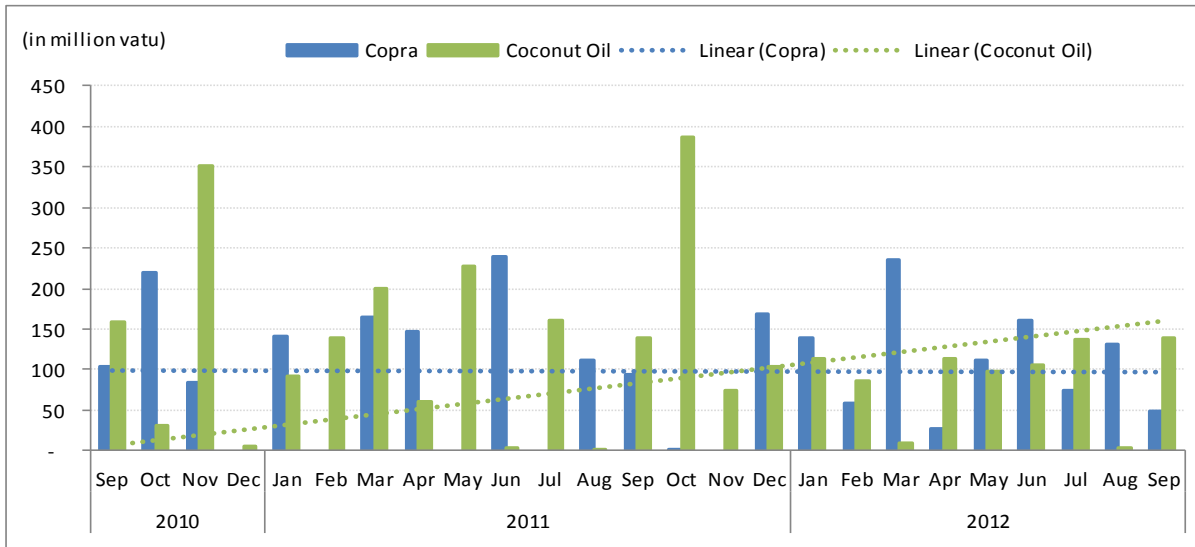


Figure 3: Exports of Coconut Products (million vatu)

In September 2012, copra exports decreased by 49% compared to the same period in 2011 and 64% over the previous month from vatu 93 million to vatu 48 million.

There are both increases and decreases in value of other coconut products, coconut oil exports remained constant at vatu 140 million compared to the same period in 2011. However it rose significantly from vatu 3 million to vatu 140 million over the previous month. Coconut meal exports recorded decreases of 71% and 54% over the months of September 2011 and August 2012.

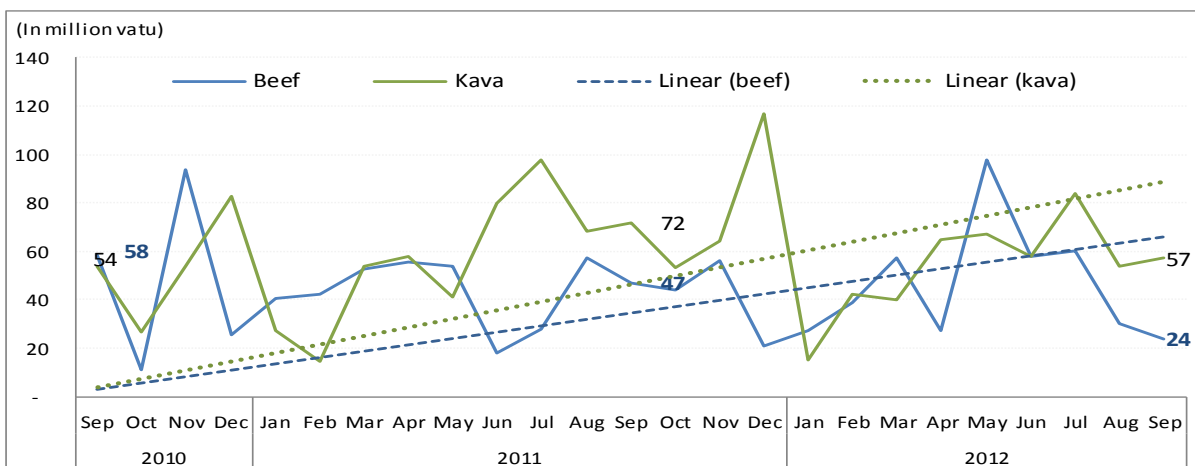


Figure 4: Exports of Kava and Beef Products (million vatu)

The domestic exports for both kava and beef recorded decreases in September 2012 by 21% and 34% over September 2011. Kava exports value decreased from vatu 72 million to vatu 57 million while beef exports decreased from vatu 47 million to vatu 31 million vatu over the same period of the previous year.

IMPORTS

In terms of imports by commodity groups, mineral fuels, registered the largest value (C.I.F) of vatu 814 million or 31% of the total imports for home consumption, followed by machines and transport, 20% with value of vatu 524 million, food and live animals 18%, basic manufactured products 12%, chemical products 8%, miscellaneous manufactured goods 7%, beverages and tobacco 3% and other products such as , crude materials, oils and fats and goods not classified elsewhere made up less than 2% each of the total imports for home consumption.

In September 2012, the imports groups that increased in value over September 2011 were: mineral fuels rising from vatu 49 million to vatu 814 million, followed by oils and fats 41%, basic manufactured goods 22%, machines and transport 20% and crude materials 11% over the month of September of 2011. However the rest of the other commodity groups decreased in value, goods not classified elsewhere (-41%), miscellaneous manufactured goods (-39%) chemical products (-25%), food and live animals (-5%), and beverages and tobacco (-2%) over September 2011.

REVISIONS TO IMPORTS AND EXPORTS STATISTICS

The Vanuatu National Statistics Office receives import and export statistics data on quantity and value from the Department of Customs and Inland Revenue's ASYCUDA merchandise trade processing system. On occasion revisions are made to import and export entries after publication. The Vanuatu National Statistics Office makes every possible effort to check the data and resolve inconsistencies and anomalies with colleagues from the Department of Customs and Inland Revenue prior to publishing. Where revisions are necessary these are highlighted in the statistical tables.

CONCEPTS AND DEFINITIONS

- **Imports for Home Consumption** are goods, materials or articles purchased in other countries and brought into Vanuatu and cleared through customs procedures for home consumption. Imports for home consumption are valued on a C.I.F. (cost, insurance, freight) basis. This means that for each commodity, the value recorded includes the factory price, the cost of packaging, the freight cost from overseas to Vanuatu ports and the insurance.
- **Exports** are expressed in F.O.B. (free on board) prices. It means the total value includes the production cost and the transport cost to the Vanuatu port of export.
- **Imports for re-export** refers to imports destined to be re-exported without having undergone any transformation, or only minor ones. This is especially the case of duty free goods and fuel "imported" into the country and sold to non-resident airline operators or ships.
- **Re-exports** are goods, materials or articles exported in the same condition as they were imported, and imported goods, which have undergone operations such as repair, repacking, or bottling which leave them essentially unchanged before exporting.

ATTACHED:

- Table 1: Summary of overseas trade
- Table 2: Principal domestic exports, value
- Table 3: Principal domestic exports, quantity
- Table 4: Imports cleared for home consumption, value

NEXT UPDATE (MONTHLY)

RELEASE DATE

October

11th December 2012

MORE INFORMATION

For statistical enquiries about this topic, please contact:

National Statistics Office: (678) 22110/22111 – email: stats@vanuatu.gov.vu

[Website: http://www.vnso.gov.vu](http://www.vnso.gov.vu)

NATIONAL STATISTICS OFFICES IN THE PROVINCES

Torba Province: (678) 5522320

Sanma Province: (678) 36542/5522316

Penama Province: (678) 5522318

Malampa Province: (678) 5522317

Tafea Province: (678) 5522319



Simil Johnson
Government Statistician

Table 1 Summary of Overseas Trade
Tableau 1 Récapitulatif du commerce extérieur

In Million Vatu
En millions de Vatu

Year / Quarter	EXPORTS F.O.B / EXPORTATION FAB					IMPORTS C.I.F / IMPORTATIONS CAF							Année	Trimestre
	Domestic Exports Exportation de produits locaux			Re-exports	Total Exports	Imports for Home Consumption / Importations destinées à la Consommation intérieure			Imports for Re- exports	Total Imports	Trade Balance	Balance Ratio		
	Luganville	Port Vila	Total	Ré- exportations	Total des Exportations (E)	Luganville	Port Vila	Total	Importations pour ré- exportations	Total des Importations (I)	Déficit Commercial (E)-(I)	Taux de Couverture (E)/(I)		
2009	1,935	2,104	4,039	2,031	6,070	3,641	25,750	29,391	1,694	31,086	(25,016)	0.2	2009	
2010	2,625	1,855	4,481	214	4,695	3,904	23,486	27,390	119	27,509	(22,815)	0.2	2010	
2011	3,816	2,196	6,012	-	6,012	4,259	22,803	27,062	193	27,256	(21,243)	0.2	2011	
2010 1st	170	407	578	121	698	692	5,176	5,868	22	5,890	(5,191)	0.1	2010	1er
2nd	604	450	1,055	35	1,090	830	5,258	6,087	38	6,125	(5,035)	0.2		2ème
3rd	871	531	1,402	58	1,460	1,213	6,652	7,865	30	7,895	(6,436)	0.2		3ème
4th	980	467	1,447	-	1,447	1,170	6,401	7,570	30	7,600	(6,153)	0.2		4ème
2011 1st	897	506	1,404	-	1,404	1,039	5,370	6,409	54	6,464	(5,060)	0.2	2011	1er
2nd	1,038	547	1,585	-	1,585	1,035	5,005	6,040	13	6,053	(4,468)	0.3		2ème
3rd	823	712	1,534	-	1,534	901	6,337	7,239	29	7,267	(5,733)	0.2		3ème
4th	1,058	431	1,489	-	1,489	1,284	6,090	7,375	97	7,472	(5,983)	0.2		4ème
2012 1st	761	384	1,145	-	1,145	910	4,661	5,571	110	5,681	(4,536)	0.2	2012	1er
2nd	938	513	1,451	-	1,451	942	5,610	6,553	110	6,663	(5,211)	0.2		2ème
3rd	888	403	1,290	-	1,290	1,257	6,331	7,588	279	7,867	(6,577)	0.2		3ème
2011 Jan	281	221	502	-	502	266	1,193	1,459	4	1,463	(961)	0.3	2011	Jan
Feb	182	110	292	-	292	225	2,297	2,522	31	2,553	(2,261)	0.1		Feb
Mar	434	175	609	-	609	548	1,880	2,428	20	2,447	(1,838)	0.2		Mars
Apr	303	210	513	-	513	180	1,850	2,030	1	2,031	(1,517)	0.3		Avril
May	339	220	559	-	559	183	1,650	1,833	6	1,839	(1,280)	0.3		Mai
Jun	395	117	512	-	512	672	1,505	2,176	6	2,183	(1,670)	0.2		Juin
July	304	176	480	-	480	277	2,321	2,597	2	2,600	(2,119)	0.2		Juillet
Aug	207	322	528	-	528	284	2,402	2,687	10	2,697	(2,169)	0.2		Août
Sep	312	214	526	-	526	340	1,614	1,955	16	1,971	(1,445)	0.3		Sept
Oct	448	172	619	-	619	515	1,828	2,343	2	2,345	(1,726)	0.3		Oct
Nov	185	154	339	-	339	368	1,853	2,221	67	2,288	(1,949)	0.1		Nov
Dec	425	105	530	-	530	402	2,409	2,811	28	2,839	(2,309)	0.2		Dec
2012 Jan	284	127	411	-	411	178	1,566	1,744	19	1,763	(1,351)	0.2	2012	Jan
Feb	191	116	307	-	307	495	1,775	2,270	87	2,358	(2,051)	0.1		Feb
Mar	286	141	427	-	427	237	1,320	1,557	4	1,561	(1,134)	0.3		Mars
Apr	241	79	319	-	319	153	1,547	1,699	56	1,755	(1,435)	0.2		Apr
May	308	287	595	-	595	523	2,668	3,191	24	3,215	(2,620)	0.2		Mai
Jun	389	148	537	-	537	266	1,396	1,662	30	1,692	(1,155)	0.3		Juin
July	364	138	502	-	502	305	2,253	2,558	5	2,563	(2,061)	0.2		Juil
Aug	206	173	379	-	379	372	2,004	2,376	72	2,448	(2,069)	0.2		Août
Sep	317	92	409	-	409	580	2,074	2,654	202	2,857	(2,448)	0.1		Sept

Source: Department of Customs and Inland Revenue / Service des Douanes et Contributions Indirectes

Table 2 Principal Domestic Exports, in Value
Tableau 2 Principales exportations de produits locaux, en valeur

In million Vatu
En millions de Vatu

Year Quarter	Copra	Coconut oil	Beef veal	Cocoa	Shell	Sawn Timber	Cowhides	Kava	Coffee	Vanilla	Coconut Meal	Root crops	Live Cattle	Live Fish	Alcoholic Drink	Fish	Other products	Total	Année Trimestre
	Coprah	Huile de coco	Viande bovine	Cacao	Coquillages	Bois débité	Cuirs et peaux		Café	Vanille	Farine de coprah	Récolte de racines	Bétail vivant	Poisson vivant	Boissons Alcoolisées	Poisson	Autres produits		
2009	569	275	399	343	71	45	11	616	3	5	0	0	0	146	202	148	1,205	4,039	2009
2010	579	933	494	383	31	26	14	508	3	5	54	0	0	324	208	103	815	4,480	2010
2011	1,065	1,592	516	247	30	65	29	762	18	5	87	1	0	166	175	359	898	6,012	2011
2010 1st	36	-	96	15	-	14	3	83	1	2	-	0	-	98	10	29	191	577	2010 1er
2nd	91	199	117	187	20	6	4	102	0	1	14	-	-	45	79	22	170	1,055	2ème
3rd	148	349	151	100	11	5	5	160	0	1	24	-	-	94	74	19	261	1,402	3ème
4th	304	386	130	82	1	1	3	163	1	1	16	-	0	86	45	33	194	1,447	4ème
2011 1st	306	432	136	6	9	3	8	98	1	1	14	0	-	46	40	188	115	1,403	2011 1er
2nd	385	292	128	104	1	31	8	190	7	1	33	-	-	49	50	99	206	1,585	2ème
3rd	205	302	132	88	9	0	6	239	0	2	26	1	-	40	45	54	384	1,534	3ème
4th	169	565	121	48	11	30	7	234	10	0	14	-	0	30	41	17	193	1,489	4ème
2012 1st	434	208	123	10	0	8	7	97	0	3	14	-	-	48	30	29	133	1,145	2012 1er
2nd	298	317	135	70	1	20	7	189	0	5	26	-	-	56	21	69	237	1,451	2ème
3rd	253	280	120	97	14	5	6	195	2	1	28	-	-	17	60	74	138	1,290	3ème
2011 Jan	141	92	41	3	9	0	2	27	0	1	3	-	-	16	2	143	22	502	2011 Jan
Feb	-	140	42	3	-	-	4	18	-	-	11	0	-	14	12	12	37	292	Fév
Mar	165	201	53	-	-	3	2	54	0	0	-	-	-	16	25	33	57	609	Mars
Apr	147	60	56	4	1	30	2	63	7	1	7	-	-	16	8	24	89	513	Avril
May	-	228	54	37	-	1	2	45	0	-	17	-	-	21	33	41	80	559	Mai
Jun	239	4	18	63	-	0	4	83	-	0	9	-	-	12	9	35	37	512	Juin
July	-	161	28	73	-	0	2	98	-	1	7	1	-	9	17	15	68	480	Juillet
Aug	112	1	57	6	-	-	2	68	0	1	3	0	-	18	9	25	223	528	Août
Sep	93	140	47	9	9	-	2	72	-	1	16	-	-	13	18	14	93	526	Sept
Oct	1	387	44	7	-	2	2	53	9	0	6	-	0	13	9	4	82	619	Oct
Nov	-	74	56	21	11	20	3	64	0	0	3	-	-	10	23	4	49	339	Nov
Dec	168	104	21	20	-	8	2	117	0	0	5	-	-	7	8	9	61	530	Dec
2012 Jan	139	113	27	10	-	1	1	15	-	1	8	-	-	34	1	13	47	411	2012 Jan
Feb	59	86	39	0	-	2	4	42	0	0	4	-	-	6	13	7	46	307	Feb
Mar	236	10	57	-	0	5	2	40	0	2	2	-	-	8	16	9	40	427	Mars
Apr	26	114	27	11	-	7	3	65	-	0	7	-	-	8	0	14	37	319	Avril
May	112	98	50	10	1	-	2	67	-	5	7	-	-	45	7	20	172	595	Mai
Jun	160	105	58	49	-	13	2	58	0	-	11	-	-	3	13	35	29	537	Juin
July	74	137	60	48	14	2	3	84	1	-	14	-	-	6	2	31	27	502	Juil
Aug	131	3	30	13	-	1	2	54	1	1	10	-	-	6	28	17	83	379	Août
Sep	48	140	31	36	-	2	1	57	-	-	5	-	-	5	30	26	28	409	Sept

Source: Department of Customs and Inland Revenue / Service des Douanes et Contributions Indirectes (r) revised other products data

Table 3 Principal Domestic Exports, in Quantity
Tableau 3 Principales exportations, en quantité

In tonnes

En tonnes

Year / Quarter	Copra	Coconut oil	Beef veal	Cocoa	Shell	Cowhides	Kava	Coffee	Vanilla	Coconut Meal	Root crops	Live Cattle	Live Fish	Fish	Année Trimestre
	Coprah	Huile de coco	Viande bovine	Cacao	Coquillages	Cuir et peaux		Café	Vanille	Farine de coprah	Récolte de racines	Bétail vivant	Poisson vivant	Poisson	
2009	15,107	5,385	903	1,480	19	267	476	3	1	12	2	0	99	456	2009
2010	12,133	10,325	1,123	1,525	10	226	498	4	1	5,232	0	0	238	381	2010
2011	13,596	12,000	1,105	1,068	10	336	734	27	1	6,917	4	0	205	2,743	2011
2010 1st	1,067	-	214	60	-	50	69	1	0	-	0	0	47	78	2010 1er
2nd	2,042	2,579	279	651	6	53	115	0	0	1,337	-	-	46	191	2ème
3rd	3,419	3,943	341	438	3	81	154	1	0	2,258	-	-	38	42	3ème
4th	5,605	3,803	289	375	0	42	160	2	0	1,638	-	-	107	70	4ème
2011 1st	3,768	3,461	300	25	3	102	94	1	0	1,172	0	-	102	1,973	2011 1er
2nd	4,526	1,956	270	446	0	88	186	11	0	2,534	-	-	41	452	2ème
3rd	3,033	2,299	290	380	3	64	225	0	1	2,137	4	-	40	265	3ème
4th	2,269	4,284	245	217	4	81	230	15	0	1,074	-	0	22	52	4ème
2012 1st	6,188	1,674	236	40	0	80	99	1	1	1,079	-	-	39	213	2012 1er
2nd	4,588	2,696	284	381	0	83	184	0	2	1,628	-	-	56	196	2ème
3rd	3,791	2,423	240	539	4	105	187	2	0	1,708	-	-	18	230	3ème
2011 Jan	2,000	749	92	13	3	21	26	0	0	346	-	-	41	1,645	2011 Jan
Feb	-	1,098	96	13	-	59	19	-	-	826	0	-	17	35	Fév
Mar	1,768	1,613	111	-	-	22	49	1	0	-	-	-	45	293	Mars
Apr	1,681	330	112	18	0	23	55	11	0	493	-	-	17	70	Avril
May	-	1,604	113	157	-	23	37	0	-	1,359	-	-	11	187	Mai
Jun	2,845	23	46	271	-	43	95	-	0	682	-	-	13	195	Juin
July	-	975	69	317	-	23	90	-	0	522	2	-	13	68	Juillet
Aug	1,461	6	120	25	-	22	63	0	0	308	2	-	18	154	Août
Sep	1,571	1,318	101	38	3	20	72	-	0	1,307	-	9	9	44	Sept
Oct	11	3,093	91	31	-	22	55	14	0	457	-	0	12	12	Oct
Nov	-	584	119	98	4	40	63	0	0	267	-	-	6	13	Nov
Dec	2,258	607	35	88	-	20	111	0	0	349	-	-	4	27	Dec
2012 Jan	2,071	900	50	40	-	19	14	0	-	616	-	-	29	19	2012 Jan
Feb	664	714	74	0	-	40	46	0	0	308	-	-	2	4	Feb
Mar	3,454	60	113	-	0	21	38	0	1	155	-	-	8	191	Mars
Apr	350	922	61	55	-	39	61	-	0	513	-	-	5	43	Avril
May	1,656	890	101	58	0	20	64	-	1	428	-	-	47	58	Mai
June	2,583	883	122	268	-	24	60	0	-	688	-	-	4	94	Juin
Jul	1,001	1,132	109	272	4	63	79	1	-	737	-	-	2	67	Juil
Aug	1,680	24	56	63	-	23	54	1	0	643	-	-	11	58	Août
Sep	1,109	1,267	74	205	-	19	55	-	-	329	-	-	4	105	Sept

Source: Department of Customs and Inland Revenue / Service des Douanes et Contributions Indirectes

Table 4 Imports Cleared for Home Consumption, in Value

Tableau 4 Importations destinées à la consommation intérieure par produit selon la

In million Vatu

En million de Vatu

Year	Quarter	Food & Live Animals	Beverages & Tobacco	Crude Materials Except Fuels	Mineral Fuels	Oils, Fats & Waxes	Chemical Products	Basic Manufactured Products	Machines & Transport Equipment	Miscellaneous Manufactured Goods	Goods N.E.C.	Total	Année	Trimestre
		Produits alimentaires et animaux vivants	Boissons et tabacs	Matières brutes non combustibles	Energie fossile	Huiles et graisses animales et végétales	Produits chimiques	Produits manufacturés	Machines et matériels de transports	Produits manufacturés divers	Articles et transactions, N.C.A			
2009		4,840	1,016	319	3,755	107	3,310	4,284	7,814	3,165	781	29,391	2009	
2010		5,108	1,023	419	3,618	133	2,923	3,817	7,252	2,735	361	27,390	2010	
2011		5,537	1,038	379	4,835	129	2,855	3,566	5,542	2,820	362	27,062	2011	
2010	1st	1,028	233	91	562	25	661	845	1,889	469	66	5,868	2010	1er
	2nd	950	170	93	1,205	32	680	808	1,543	522	84	6,087		2ème
	3rd	1,516	239	128	1,122	27	765	1,166	2,019	773	111	7,865		3ème
	4th	1,614	381	107	729	50	817	999	1,801	972	100	7,570		4ème
2011	1st	1,044	216	77	1,208	22	750	935	1,527	582	49	6,410	2011	1er
	2nd	1,343	239	74	866	29	729	822	1,134	705	98	6,039		2ème
	3rd	1,551	297	123	1,266	35	699	946	1,468	773	80	7,238		3ème
	4th	1,599	286	103	1,495	43	678	864	1,414	759	134	7,375		4ème
2012	1st	1,103	303	79	855	41	630	736	1,243	494	86	5,571	2012	1er
	2nd	1,059	225	90	1,442	20	647	804	1,585	607	74	6,553		2ème
	3rd	1,552	257	128	1,471	44	675	1,087	1,615	684	75	7,588		3ème
2011	Jan	295	38	17	45	8	177	272	416	178	11	1,459	2011	Jan
	Feb	310	63	23	920	10	241	320	395	220	21	2,522		Fév
	Mar	438	115	37	242	4	332	342	716	185	17	2,428		Mars
	Apr	413	87	21	533	4	230	213	319	194	16	2,030		Avril
	May	431	75	26	31	7	238	286	414	260	64	1,833		Mai
	Jun	500	77	28	301	17	260	323	401	251	18	2,176		Juin
	July	497	146	39	575	10	211	323	496	284	15	2,597		Juillet
	Aug	557	80	53	642	12	220	358	535	203	28	2,687		Août
	Sep	497	70	32	49	13	268	266	437	286	37	1,955		Sept
	Oct	422	29	46	812	4	222	249	301	206	51	2,343		Oct
	Nov	518	152	18	75	20	215	269	646	254	54	2,221		Nov
	Dec	658	105	40	608	20	241	345	467	299	28	2,811		Dec
2012	Jan	391	110	30	40	19	210	238	522	172	12	1,744	2012	Jan
	Feb	334	121	24	764	9	226	256	325	161	49	2,270		Fev
	Mar	378	72	25	50	13	193	242	397	161	25	1,557		Mars
	Apr	219	57	34	607	13	151	203	269	129	18	1,699		Avril
	May	537	83	29	798	4	268	321	893	239	19	3,191		Mai
	June	303	85	27	37	3	228	280	423	238	37	1,662		Juin
	Sep	462	64	61	614	19	206	375	469	268	21	2,558		Juin
	July	462	64	61	614	19	206	375	469	268	21	2,558		Juil
	Aug	616	125	32	43	7	268	389	623	242	32	2,376		Août
	Sept	473	68	35	814	19	201	324	524	174	22	2,654		Sept

Source: Department of Customs and Inland Revenue / Service des Douanes et Contributions Indirectes