

## PREFACE

The Vanuatu National Statistics Office (VNSO) is pleased to publish the Quarterly Statistical Indicators (QSI) for the June Quarter of 2013.

This report contains a wide range of statistics, collected and processed by the VNSO from a variety of sources.

The Quarterly Statistical Indicators contains only a small fraction of available official statistics. More detailed information on different topics and tables of special interest can be obtained from other publications (refer to the list at the end of this QSI), or directly from the VNSO databases.

Should you require more information on these indicators, our staff is always here to assist you.



**Simil Johnson**  
Government Statistician

09<sup>th</sup> October 2013

---

Vanuatu National Statistics Office

Private Mail Bag 9019  
PORT VILA  
Vanuatu  
Tel: (678) 22110/22111  
Fax: (678) 24583  
E-mail: [stats@vanuatu.gov.vu](mailto:stats@vanuatu.gov.vu)  
Website: [www.vns.gov.vu](http://www.vns.gov.vu)

P. O. Box 273  
LUGANVILLE  
Santo  
Tel/Fax: (678) 36542

Provincial Statistics Office

PO Box 22  
Lakatoro, Malekula  
MALAMPA PROVINCE

Commercial Center  
Lenakel, Tanna  
TAFEA PROVINCE

PO Box 8  
Saratamata, Ambae  
PENAMA PROVINCE

Sola, Vanua Lava  
Banks group  
TORBA PROVINCE

# CONTENTS

---

Table		Page
	<b>OVERVIEW</b>	<b>1</b>
1.1 – 1.2	<b>PRODUCTION</b>	<b>6</b>
	Copra, Cocoa, and Cattle	
2	<b>COMMUNICATION</b>	<b>8</b>
	Postal Services	
3	<b>ENERGY</b>	<b>9</b>
	Electricity Consumption	
4.1 – 4.4	<b>PRICE INDICES</b>	<b>10</b>
	CPI for Vila and Luganville, by Expenditure Group	
5.1 – 5.2	<b>GOVERNMENT FINANCE STATISTICS</b>	<b>14</b>
	Summary of Revenue and Expenditure	
6.1 – 6.8	<b>OVERSEAS TRADE</b>	<b>16</b>
	Value and Volume of Exports, by Main Products; by Country of Destination; Value of Imports, by SITC; by Country of Consignment.	
7.1 – 7.4	<b>TOURISM</b>	<b>24</b>
	Summary of Tourism Statistics; Visitors Arrivals by Purpose, Arrivals by Country of Usual Residence;	
8	<b>EXCHANGE RATES</b>	<b>28</b>
	Exchange Rates: Average of rates used by the collector of Customs Department	
10	<b>TRANSPORT</b>	<b>29</b>
	Private Motor Vehicles Registration	
11	<b>EMPLOYMENT</b>	<b>30</b>
	Number of Provident Fund contributing members	
12	<b>List of statistical publications</b>	<b>31</b>

**Symbols:**

The interpretation of the symbols used throughout this publication is as follows:

<b>n.a.</b>	not available	<b>e</b>	estimate
<b>r</b>	revised	<b>p</b>	provisional
<b>t</b>	Metric Tonne	<b>-</b>	nil
<b>0</b>	less than half final unit shown		
<b>N.E.C.</b>	Not elsewhere classified	<b>Vt</b>	Vatu

**Notes:**

- All data are from the Vanuatu National Statistics Office unless otherwise stated.

**Symboles:**

Les symboles utilisés dans la publication doivent être interprétés comme suit:

<b>n.a.</b>	non disponible	<b>e</b>	donnée estimée
<b>r</b>	donnée rectifié	<b>p</b>	provisoire
<b>t</b>	Tonne	<b>-</b>	résultat nul
<b>0</b>	inférieur au demi de l'unité indiquée		
<b>N.C.A.</b>	Non classifié ailleurs	<b>Vt</b>	Vatu

**Notes:**

- Toutes les données proviennent du Bureau National des Statistiques du Vanuatu, autrement la source est indiquée.
- Pour des raisons de commodité, le système de notation numérique anglo-saxon a été conservé dans les tableaux. La virgule, qui indique normalement la séparation entre la partie entière et la partie décimale d'un nombre dans le système francophone est remplacée par le point. La virgule est employée ici pour séparer les groupes de trois chiffres dans les grands nombres.

# OVERVIEW

## Copra and Cocoa Production (refer to Table 1.1)

- Copra production provisional figures for June quarter 2013 decreased significantly in volume by 78% or 6,763 tonnes from 8,643 to 1,880 tonnes over the June quarter of 2012.
- Copra producers' price decreases by 25% or Vt10,000 from Vt40,000 to Vt30,000 in the June quarter of 2013 over the corresponding period in 2012 but an increase of 27% over the previous quarter which does not have much effect on production.
- Cocoa production decreased by 69% or 322 tonnes in the June quarter of 2013 compared to 464 tonnes in the June quarter of 2012. The recorded value of cocoa production decreased by 73%. The decrease was partly due to seasonal low harvest period in the beginning of this year and unfavourable wet conditions.
- Cocoa producers' price fell by 11% or Vt17,000 in the June quarter of 2013 compared to the same period in 2012 from Vt160,000 to Vt143,000.

## Cattle Production (refer to Table 1.2)

- The total number of cattle slaughtered by abattoirs in the June quarter of 2013 slightly decreased by 1% from 4,123 to 4,078 heads over the June quarter of 2012. This decrease was due to a 10% drop in cattle slaughtered in Santo over the same quarter of the previous year.

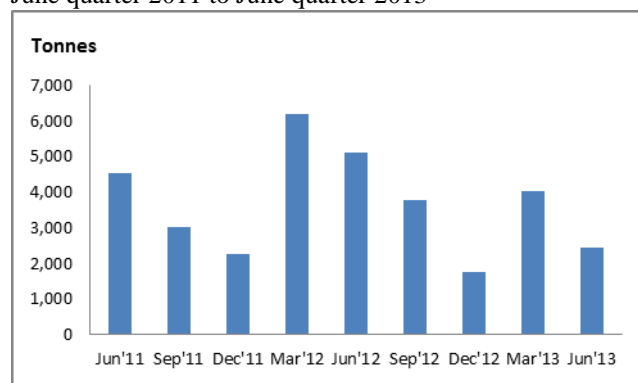
## Copra Exports (refer to Tables 6.2, 6.3 and 6.4)

- In the June quarter of 2013, copra exports decreased by 52% or 2,661 tonnes in quantity from 5,098 to 2,438 tonnes over the June quarter of 2012.
- In value terms, copra exports decreased dramatically by 72% or Vt216 million in the June quarter of 2013 from Vt298 million to Vt83 million over June quarter of 2012. This decrease is driven by the fall in copra average export price at 42% from Vt59,000 to Vt34,000 over June quarter of 2012 fallen price is justified by the world market price.
- Copra export receipts constituted 11% share of the total domestic exports value in the June quarter of 2013.

## Copra Exports

Quantity in tonnes

June quarter 2011 to June quarter 2013



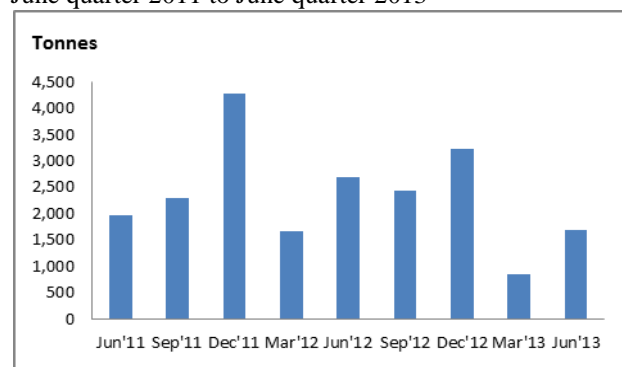
## Coconut Oil (refer to Tables 6.2 and 6.3)

- Coconut oil exports decreased in volume by 37% over the June quarter of 2012 from 2,696 to 1,689 tonnes in the June quarter of 2013, however there was an improvement of 851 tonnes over the previous quarter of 2013 from 838 tonnes in the March quarter to 1,689 in the June quarter of 2013.
- The reported value of coconut oil exports in June quarter 2013 decreased by 70% or Vt222 million over the June quarter of 2012. This fall is justify by similar movement on the value of copra export in that same period.
- Coconut oil receipts constituted 13% share of total domestic export value in the June quarter of 2013.

## Coconut Oil Exports

Quantity in tonnes

June quarter 2011 to June quarter 2013



## Cocoa Exports (refer to Tables 6.2, 6.3 and 6.4)

- Cocoa exports increased from 381 tonnes in June quarter 2012 to a new level of 491 tonnes or an increase of 29% in the June quarter of 2013 showing an improvement of 110 tonnes, over the

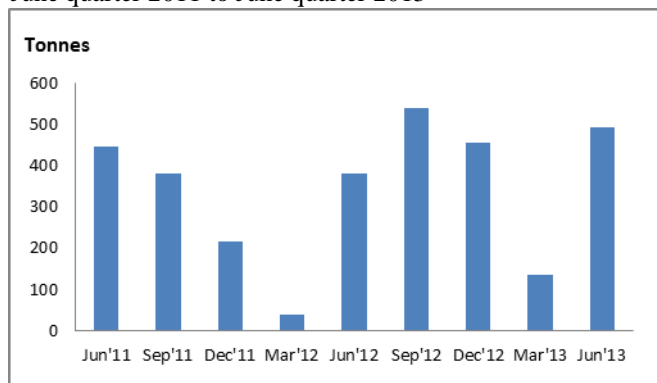
previous quarter it recorded a significant improvement of 355 tonnes.

- In value terms, cocoa exports increased by 40% showing an improvement of Vt28 million from Vt70 million in the June quarter of 2012 to Vt98 million in the June quarter of 2013. The cocoa average export price increased by 9% or Vt16,000 over the June quarter of 2012 from Vt184,000 to Vt200,000
- Cocoa exports share of the total domestic exports value constituted 13% in the June quarter of 2013.

### Cocoa Exports

Quantity in tonnes

June quarter 2011 to June quarter 2013



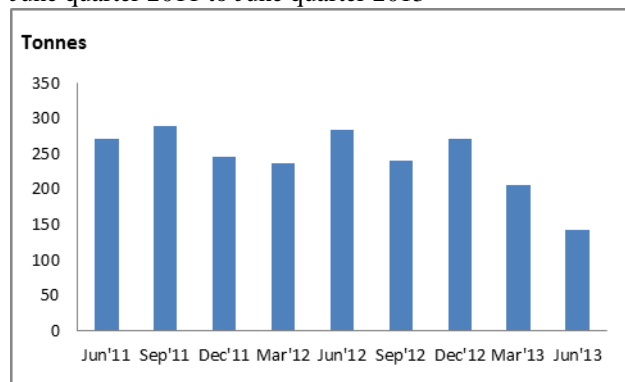
### Beef (refer to Tables 6.2, 6.3 and 6.4)

- Beef exports recorded decreases in quantity by 50% and 31% over the June quarter of 2012 and March quarter of 2013 respectively to 142 tonnes in June quarter of 2013.
- In vatu terms, beef exports recorded decreases of 46% and 18% over the June quarter of 2012 and March quarter of 2013 respectively to Vt73million in the June quarter of 2013. This decrease was associated with a decline of 47% and 46% in beef exports to Japan and Other MSG Countries over the June quarter of 2012.
- The implied average beef export price increased by 8% in June quarter 2013 over the June quarter of 2012.
- Beef exports value constituted 10% of the total domestic exports receipts in the June quarter of 2013.

### Beef Exports

Quantity in tonnes

June quarter 2011 to June quarter 2013



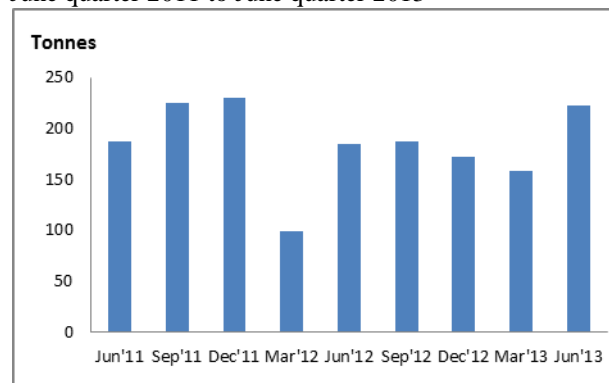
### Kava (refer to Tables 6.2, 6.3 and 6.4)

- Kava exports recorded increases in quantity by 21% and 41% over the June quarter of 2012 and March quarter of 2013 respectively to 223 tonnes in June quarter 2013.
- In value terms, kava export increased by 18% showing an improvement of Vt34 million in the June quarter of 2013 from Vt189 million to Vt223 million over June quarter of 2012.
- Kava exports constituted 30% of the total domestic exports in value in the June quarter of 2013.

### Kava exports

Quantity in tonnes

June quarter 2011 to June quarter 2013



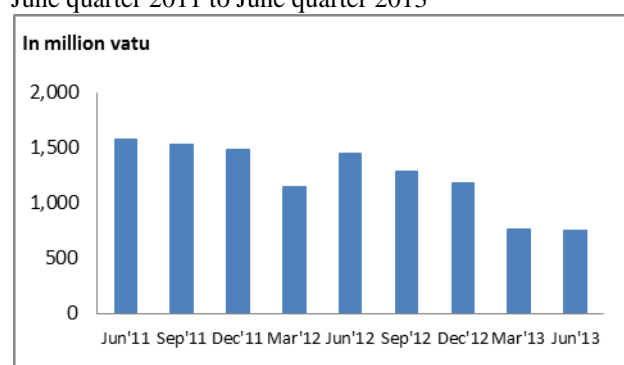
## Domestic Exports (refer to Tables 6.1 and 6.5)

- According to the June quarter of 2013 provisional figures, domestic export (excluding re-exports) earnings registered decreases of 48% from Vt1,451 million to Vt749 million over June quarter of 2012 and 2% over the March quarter of 2013.
- The distribution of exports by country of destination indicated that Other Countries registered the largest share of the Vanuatu's main export destination with 44% of total domestic exports in June quarter of 2013 followed by Australia (20%); Other MSG Countries (17%); Japan (8%); New Caledonia (7%); New Zealand (3%) and EU Countries at 1% over June quarter of 2012. Other Countries were comprised of Asian Countries.

### Domestic Exports

In million Vatu

June quarter 2011 to June quarter 2013



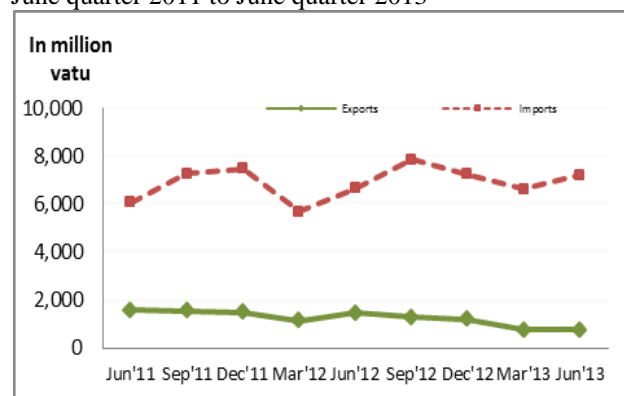
## Trade Deficit (refer to Table 6.1)

- Vanuatu's trade deficit (including re-exports) stood at Vt6,475 million in the June quarter of 2013, which reflected a deterioration of Vt1,264 million over the June quarter of 2012 from Vt5,211 million.

### Trade deficit

In million Vatu

June quarter 2011 to June quarter 2013



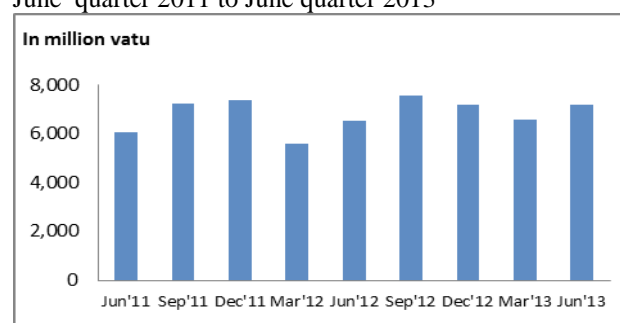
## Imports for Home Consumption (refer to Tables 6.6 and 6.8)

- Imports for home consumption increased by 10% or Vt633 million in value from Vt6,553 million in June quarter of 2012 to Vt7,186 million in June quarter of 2013. The major imported items which contributed to this increase were: crude materials (71%); oils and fats (48%), beverages and tobacco (40%); food and live animals (27%); miscellaneous goods (20%), basic manufactured goods (9%); chemical products and goods not classified elsewhere (7%) each respectively and mineral fuels (4%). However, machines and transport decreased by 8% or Vt128 million over the June quarter of 2012
- In terms of share of commodity groups to total imports receipts, mineral fuels represented the largest value (C.I.F) of Vt1,503 million or 21% of the total imports for home consumption, followed by machines and transport equipment (20%); food and live animals (19%), basic manufactured goods (12%); miscellaneous goods and chemical products (10%) each respectively. Other commodities such as, beverages and tobacco, crude materials and goods not classified elsewhere and oils and fats made up less than 5% each of the total imports for home consumption.
- During the June quarter of 2013, the value of the selected ten major imported items decreased by 4% or Vt90 million from Vt2,344 million to Vt2,254 over the June quarter of 2012.
- Commodities that recorded increases were: wheat flour (53%); rice (47%), Jet fuel and aviation kerosene (28%); personal effects (9%) and distillate fuels (6%) of the total value of the selected ten major imported items. However, the rest of the selected ten major imported items which decreased were motor vehicles transport (-85%), cement (-33%), pharmaceutical products (-19%) cigarettess and tobacco and motor spirit (-12%) each respectively over June quarter of 2012.

### Imports for Home Consumption

In million Vatu

June quarter 2011 to June quarter 2013

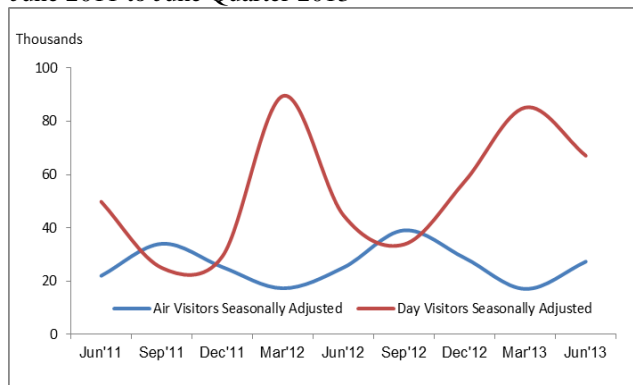


**Tourism** (refer to Tables 7.1 to 7.4)

- The total number of visitors<sup>1</sup> to Vanuatu increased by 35% and 13% rising from 71,143 over June quarter 2012 and 85,198 over the March quarter 2013 to 96,356 in June quarter 2013 respectively.

**Quarterly Total visitors**

Seasonally adjusted visitor arrivals  
June 2011 to June Quarter 2013

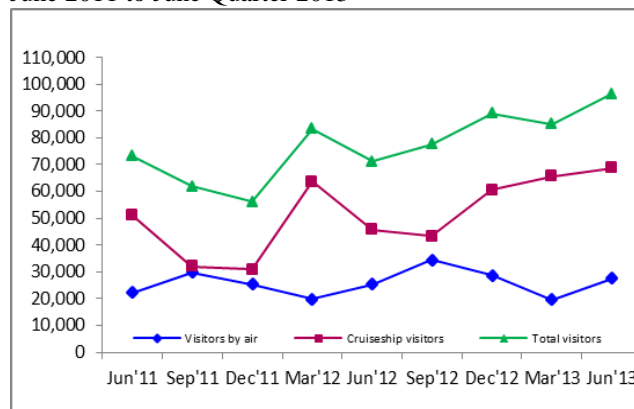


- The seasonally adjusted data shows that the peak season for air visitors is the low season for cruise ship arrivals.
- The number of visitor arrivals by air increased in June quarter of 2013 by 9% over corresponding period of 2012 and 41% over the previous quarter.
- Australian visitors continue to dominate the international visitor arrivals accounting for 60% of total visitor arrivals by air.
- Visitor arrivals recorded increases over the June quarter of 2012 for : Other Pacific countries (23%); North America (20%); New Zealand (15%); Australia (7%); New Caledonia and Europe at 5% each and Other countries at 3% while Japan visitors declined at 6% over June quarter of 2012.
- June quarter 2013 showed that Holiday visitors accounted for 80% of total international arrivals. Business, meeting and conference visitors make up 9%, Visiting friends and families at 7% and other purposes at 4%.
- Cruise ship visitors (day visitors) increased by 35% rising from 45,833 over June quarter 2012 to 62,005, however day visitors declined by 6% over March quarter 2013. Day visitors continue to make up most visitors in June quarter

accounting for 69% of total visitors.

**Number of Visitors by Quarter**

June 2011 to June Quarter 2013

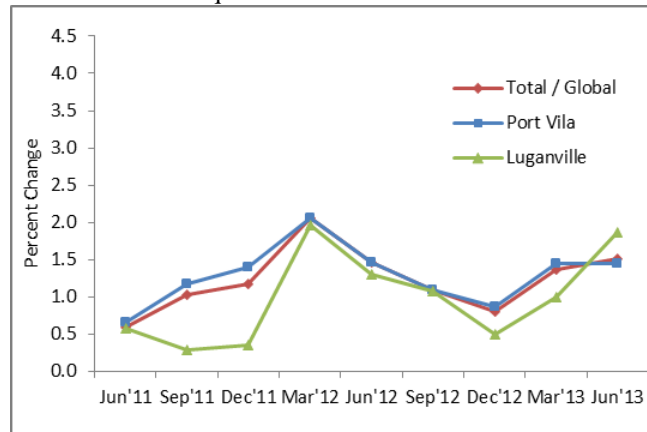


**Consumer Price Index** (refer to Tables 4.1 and 4.2)

- The Consumer Price Index (CPI) for the June quarter 2013 increased by 0.2% over the previous quarter. Port Vila and Luganville indices both rose by 0.1% and 0.8% respectively. In comparison to June quarter of 2012, Vanuatu index increased by 1.5%, Port Vila index rose by 1.4% and Luganville index increased by 1.9%.

**Inflation Rate**

Rate of change over the same quarter of previous year  
June 2011 to June quarter 2013



- At the national level, increases in the following goods and services groups contributed to the increase in the overall CPI in the June quarter 2013 compared with June 2012: Clothing and Footwear (5.4%); Miscellaneous (4.0%); Education (2.7%); Housing and Utilities (2.5%); Recreation (1.8%) and Food (1.3%). The main contributors to the movement was the rise in the prices of Footwear, Secondary Education, Utilities, Sport and Other Recreation: and Diary and Related products. The

<sup>1</sup> Refers to both visitors by air and cruise ship

only Expenditure group reflecting a decline in index was Transport (-0.3%).

### Summary of Government Revenue and Expenditure

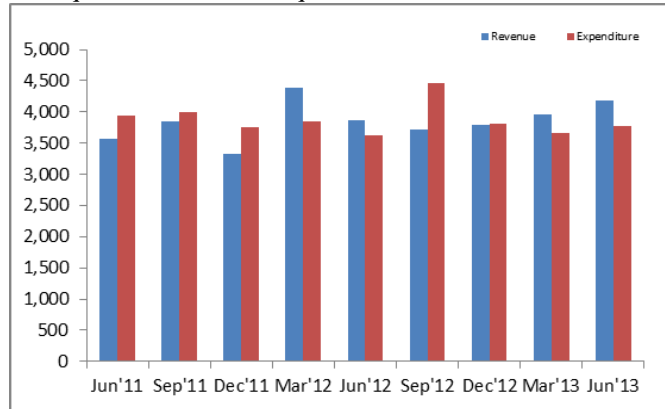
(refer to Table 5.1)\*

- In the June quarter of 2013, total Government operation (Revenue minus Expense) register a Net Operating Balance (NOB) of (+) 398 million, a slight improvement over corresponding period in 2012 and the previous quarter.

### Government Revenue and Expenditure

In million Vatu

June quarter 2011 to June quarter 2013



### Government Revenue (refer to Table 5.1)

- Government revenue in the June quarter of 2013 register an increase of 8% when compared to the same period in 2012 and 5% over the previous quarter. The growth was mainly attributed to the 18% increase in tax revenue collections and the increase in grants respectively over these quarters, despite a 12% decrease in tax revenue collections over March 2013.

### Government Expenditure (refer to Table 5.1)

- The total government expenditure for June quarter of 2013 reflected in the government operation was Vt3,776 million, indicating an increase of 4% over the corresponding quarter in 2012 and 3% over the previous quarter.

### Energy Consumption (refer to Table 3)

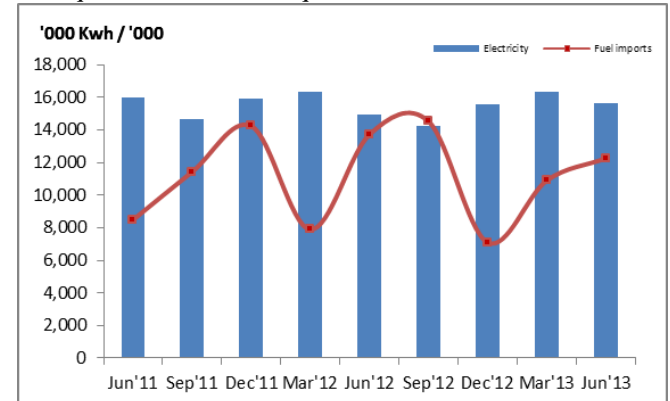
- In June quarter of 2013, total electricity consumption as recorded in thousand Kilowatt hours (Kwh) increased by 4% to 15,616 Kwh over the same quarter of 2012. This was due to an increase in electricity consumption in Tanna at 24%, Port Vila at 5% and Luganville at 3% over the same quarter of

2012. However total electricity consumption declined by 4% over the March quarter of 2013.

### Electricity and Fuel imports

In '000 Kwh and '000 litres

June quarter 2011 to June quarter 2013



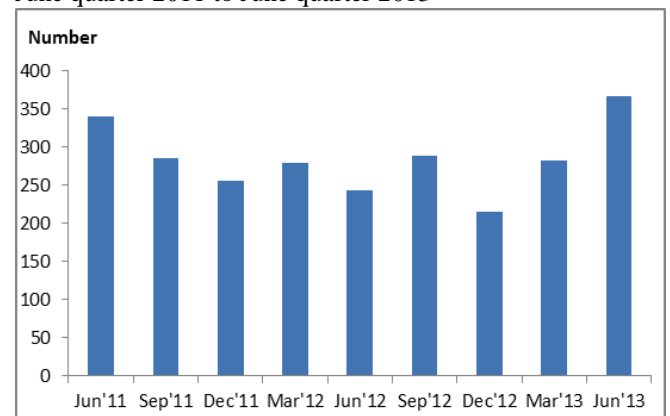
- The total volume of imported petrol, diesel and kerosene decreased by 11% or 1,463 litres from 13,717 in the June quarter of 2012 to 12,254 litres in June quarter of 2013. It indicated an improvement of 1,362 litres from 10,892 litres over the March quarter 2013.

### New Motor Vehicle Registration (refer to Table 9)

- The total number of newly registered vehicles increased by 51% or 123 vehicles to 366 vehicles over June quarter 2013. The increase was attributed by huge increases in newly registered vehicles in the June quarter 2013. Vehicle registrations also recorded an increase of 29% over March quarter 2013.

### New Private Motor Vehicle Registration

June quarter 2011 to June quarter 2013



\* Government Finance Statistics has changed from GFS 1986 reporting format to latest version of GFS 2001.



**PRODUCTION**

**Table 1.1 Copra and Cocoa Received for Exports and for Oil Production**

**Tableau 1.1 Coprah et cacao reçus pour exportations et pour la production d'huile**

Year	Quarter	Copra / Coprah				Cocoa / Cacao			Année	Trimestre	
		In quantity / En quantité (tonnes)			In value (million Vt)	Producer's price (Vt / tonne)	In quantity* (tonnes)	In value* (million Vt)			Producer's price* (Vt / tonne)
		Port Vila	Luganville	Total	En valeur (millions de Vt)	Prix reçu par le producteur					
2010		-	36,066	36,066	1,345	37,290	2,541	438	172,408	2010	
2011		-	40,320	40,320	2,283	56,633	1,779	334	188,050	2011	
2012		-	35,834	35,834	1,466	40,903	1,019	165	161,753	2012	
2010	1st	-	8,067	8,067	243	30,081	95	11	118,746	2010 1er	
	2nd	-	7,774	7,774	247	31,766	1,178	212	179,990	2ème	
	3rd	-	10,139	10,139	391	38,541	693	118	170,540	3ème	
	4th	-	10,086	10,086	465	46,055	576	97	167,996	4ème	
2011	1st	-	11,445	11,445	749	65,462	175	37	210,057	2011 1er	
	2nd	-	9,345	9,345	619	66,230	677	127	187,445	2ème	
	3rd	-	8,238	8,238	398	48,364	482	87	180,909	3ème	
	4th	-	11,291	11,291	517	45,773	445	84	188,050	4ème	
2012	1st	-	10,205	10,205	541	45,773	76	12	159,947	2012 1er	
	2nd	-	8,643	8,643	346	40,058	464	74	159,996	2ème	
	3rd	-	11,320	11,320	413	36,440	314	52	164,543	3ème	
	4th	-	5,666	5,666	166	29,356	165	27	162,220	4ème	
2013	1st	-	6,271	6,271	149	23,728	59	10	161,568	2013 1er	
	2nd	-	1,880	1,880	57	30,054	143	20	142,912	2ème	

Source: Vanuatu Commodities Marketing Board (VCMB) / Commercialisation des Produits de Base du Vanuatu (CPBV)

**PRODUCTION**

**Table 1.2 Cattle Slaughter by Abattoirs**  
**Tableau 1.2 Abattage de bovins par abattoirs**

**Number/tonne**  
**Nombre/tonne**

Year	Quarter	Vila			Santo			Total			Année	Trimestre
		Number of Head	Weight (tonne)	Av Carcass Weight (kg)	Number of Head	Weight (tonne)	Av Carcass Weight (kg)	Number of Head	Weight (tonne)	Av Carcass Weight (kg)		
		Nombre de tête	Poids (tonnes)	Poids moyen de carcasse	Nombre de tête	Poids (tonnes)	Poids moyen de carcasse	Nombre de tête	Poids (tonnes)	Poids moyen de carcasse		
2010		10,374	2,168	209	6,282	1,369	218	16,656	3,537	212	2010	
2011		10,761	2,222	206	4,517	992	220	15,278	3,214	210	2011	
2012		12,889	2,455	190	3,787	935	247	16,676	3,390	203	2012	
2010	1st	2,288	499	218	1,514	306	202	3,802	805	212	2010	1er
	2nd	2,510	520	207	1,337	301	225	3,847	821	213		2ème
	3rd	2,771	575	207	1,938	438	226	4,709	1,013	215		3ème
	4th	2,805	574	205	1,493	324	217	4,298	898	209		4ème
2011	1st	2,161	438	203	1,127	264	234	3,288	702	214	2011	1er
	2nd	2,546	523	205	1,270	240	189	3,816	763	200		2ème
	3th	2,698	638	237	1,217	278	228	3,915	916	175		3ème
	4th	3,356	623	186	903	210	233	4,259	833	196		4ème
2012	1st	3,155	612	194	1,074	225	210	4,229	837	198	2012	1er
	2nd	3,222	635	197	901	234	260	4,123	869	211		2ème
	3rd	3,123	598	191	865	222	257	3,988	820	206		3ème
	4th	3,389	610	180	947	254	268	4,336	864	199		4ème
2013	1st	3,285	570	173	705	190	270	3,990	760	190	2013	1er
	2nd	3,267	571	175	811	196	241	4,078	767	188		2ème

Source: Vanuatu Abattoirs Ltd and Santo Meat Packers / Société des Abattoirs du Vanuatu et Santo Meat Packers

COMMUNICATION

**Table 2 Postal Services**

**Tableau 2 Service postal**

Year	Quarter	Letters	Priority Letters	Printed Matters	Packets (1)	Parcels Registered (1)	Express Mail Service	Total	Domestic Mail	International Mail		Total	Année	Trimestre
		Lettres	Lettres de priorité	Imprimés	Paquets	Colis	Recommandées		Courriers par express	Courrier Interne	Courrier International			
										Sortant	Reçu			
2010		895,177	522	89,480	140,534	6,385	191,116	4,816	1,328,030	669,000	428,000	231,030	1,328,030	2010
2011		886,757	658	41,532	160,692	6,417	154,365	6,415	1,256,836	660,678	399,484	196,674	1,256,836	2011
2012		724,657	606	32,994	168,591	6,125	117,739	9,427	1,060,139	504,756	370,619	184,764	1,060,139	2012
2010	1st	203,149	141	22,863	32,099	1,506	49,663	1,021	310,442	145,362	102,900	62,180	310,442	2010 1er
	2nd	220,986	123	20,182	35,378	1,390	49,501	1,115	328,675	161,802	108,380	58,493	328,675	2ème
	3rd	244,492	131	24,472	33,620	1,744	48,945	1,397	354,801	192,732	109,407	52,662	354,801	3ème
	4th	226,550	127	21,963	39,437	1,745	43,007	1,283	334,112	169,104	107,313	57,695	334,112	4ème
2011	1st	230,030	151	10,260	37,896	1,616	42,055	1,175	323,183	172,442	98,484	52,257	323,183	2011 1er
	2nd	234,026	162	11,502	36,592	1,576	39,452	1,434	324,744	178,914	96,042	49,788	324,744	2ème
	3rd	216,909	168	9,487	40,415	1,562	38,493	1,843	308,877	158,390	102,676	47,811	308,877	3ème
	4th	205,792	177	10,283	45,789	1,663	34,365	1,963	300,032	150,932	102,282	46,818	300,032	4ème
2012	1st	182,618	137	9,229	44,747	1,581	31,621	1,888	271,821	129,307	95,314	47,200	271,821	2012 1er
	2nd	167,643	141	8,287	42,574	1,455	28,742	2,347	251,189	118,004	90,193	42,992	251,189	2ème
	3rd	205,981	164	7,564	39,998	1,421	27,855	2,521	285,504	146,317	92,031	47,156	285,504	3ème
	4th	168,415	164	7,914	41,272	1,668	29,521	2,671	251,625	111,128	93,081	47,416	251,625	4ème
2013	1st	155,333	128	8,442	42,414	1,364	31,895	2,516	242,092	113,578	92,141	36,373	242,092	2013 1er
	2nd	161,027	176	8,583	36,415	1,515	30,450	2,932	241,098	119,105	85,997	35,996	241,098	2ème

Source : Vanuatu Postal Services / Hotel de poste du Vanuatu

Table 3 Energy Consumption

Tableau 3 Consommation d'énergie

Year	Quarter	'000 Kwh / x 1000 Kwh				Imports Cleared for Home Consumption ('000 litres)				Année	Trimestre
		Port Vila	Luganville	Malekula Mallicolo	Tanna	Total	Importations destinées à la consommation intérieure ( x 1000 litres)				
						Petrol Essence Auto	Diesel Mazout	Kerosene Pétrole lampant			
2010		52,568	7,504	579	420	61,071	9,703	36,040	69	45,812	2010
2011		54,014	7,572	597	460	62,644	8,494	39,904	843	49,241	2011
2012		52,243	7,749	619	509	61,120	8,364	34,859	0	43,224	2012
2010	1st	13,820	1,773	143	99	15,836	1,699	5,025	33	6,757	2010 1er
	2nd	12,748	1,834	150	104	14,835	3,031	12,558	20	15,609	2ème
	3rd	12,501	1,837	148	107	14,593	3,024	12,426	16	15,466	3ème
	4th	13,499	2,061	137	110	15,807	1,949	6,030	-	7,980	4ème
2011	1st	14,075	1,751	154	117	16,097	2,150	12,089	842	15,081	2011 1er
	2nd	13,716	1,985	145	113	15,959	1,513	6,978	1	8,491	2ème
	3rd	12,554	1,868	146	114	14,682	1,571	9,857	0	11,428	3ème
	4th	13,669	1,968	152	117	15,906	3,260	10,980	0	14,240	4ème
2012	1st	14,118	1,934	156	125	16,333	1,928	5,964	0	7,892	2012 1er
	2nd	12,695	1,969	157	129	14,950	2,643	11,074	-	13,717	2ème
	3rd	12,099	1,887	148	126	14,259	2,489	12,034	0	14,523	3ème
	4th	13,331	1,958	159	130	15,578	1,304	5,787	-	7,091	4ème
2013	1st	14,025	2,000	159	131	16,315	2,576	8,316	0	10,892	2013 1er
	2nd	13,280	2,019	157	160	15,616	2,337	9,916	0	12,254	2ème

Source : Unelco Vanuatu Limited; Vanuatu Utilities &amp; Infrastructures Ltd; and Department of Customs

Société de l'Unelco Vanuatu; Société des Services &amp; des Infrastructures du Vanuatu ; et le Service des Douanes

PRICE INDICES

Table 4.1 Consumer Price Index

Base: 1st Quarter 2000 = 100

Tableau 4.1 Indice des prix à la consommation

Base: 1<sup>er</sup> Trimestre 2000 = 100

Year	Quarter	Consumer Price Indices			<i>Underlying Inflation Index Inflation sous-jacente</i>	Rate of Change (%)			Rate of Change (%)			Année	Trimestre
		Indice des prix à la consommation				Variation par rapport			Variation				
		Total / Global	Port Vila	Luganville	Total / Global	Port Vila	Luganville	Total / Global	Port Vila	Luganville			
					<b>Over Previous Year /à l'année précédente</b>			<b>4th Quarter over 4th Quarter of previous year / du 4ème trimestre au 4ème trimestre de l'année précédente</b>					
2010		135.8	135.4	137.6	122.3	2.8	2.9	2.1	3.4	3.5	2.6	2010	
2011		137.0	136.7	138.2	123.4	0.9	1.0	0.5	1.2	1.4	0.4	2011	
2012		138.8	138.6	139.9	126.8	1.4	1.4	1.2	0.8	0.9	0.5	2012	
						<b>Over Previous Quarter / au trimestre précédent</b>			<b>Over Same Quarter of previous year / au même trimestre de l'année précédente</b>				
2010	1st	134.9	134.6	136.3	123.3	2.4	2.7	0.7	2.8	3.0	2.1	2010	1er
	2nd	135.9	135.6	137.1	121.7	0.7	0.7	0.6	2.7	2.8	2.2		2ème
	3rd	136.0	135.6	138.0	122.0	0.1	0.0	0.7	2.3	2.4	1.5		3ème
	4th	136.3	135.7	138.9	122.2	0.2	0.1	0.7	3.4	3.5	2.6		4ème
2011	1st	135.8	135.5	137.1	122.6	-0.4	-0.1	-1.3	0.7	0.7	0.6	2011	1er
	2nd	136.7	136.5	137.9	122.3	0.7	0.7	0.6	0.6	0.7	0.6		2ème
	3rd	137.4	137.2	138.4	124.3	0.5	0.5	0.4	1.0	1.2	0.3		3ème
	4th	137.9	137.6	139.3	124.5	0.4	0.3	0.7	1.2	1.4	0.4		4ème
2012	1st	138.6	138.3	139.8	126.2	0.5	0.5	0.4	2.1	2.1	2.0	2012	1er
	2nd	138.7	138.5	139.7	126.9	0.1	0.1	-0.1	1.5	1.5	1.3		2ème
	3rd	138.9	138.7	139.9	126.6	0.1	0.1	0.1	1.1	1.1	1.1		3ème
	4th	139.0	138.8	140.0	127.4	0.1	0.1	0.1	0.8	0.9	0.5		4ème
2013	1st	140.5	140.3	141.2	129.0	1.1	1.1	0.9	1.4	1.4	1.0	2013	1er
	2nd	140.8	140.5	142.3	129.3	0.2	0.1	0.8	1.5	1.4	1.9		2ème

Source : Vanuatu National Statistics Department / Bureau National de la Statistique

PRICE INDICES

**Table 4.2 Consumer Price Indices by Expenditure Group, Vanuatu**

**Tableau 4.2 Indice des prix à la consommation par poste de dépense**

**Base: 1st Quarter 2000 = 100**

**Base: 1<sup>er</sup> Trimestre 2000 = 100**

Year	Quarter	Food Produits alimentaires	Alcoholic drinks and Tobacco Boisson alcoolisée et tabac	Clothing & Footwear Habillement	Housing & Utilities Loyer, eau, et énergie etc.	Household Supplies Mobilier et équipement ménager etc.	Health Santé	Transport	Communication	Recreation Loisir	Education	Miscellaneous Autres	All Groups Indice Global	Année	Trimestre
<b>Vanuatu</b>														<b>Vanuatu</b>	
2010	1st	140.0	170.2	100.7	128.0	104.2	101.0	146.4	98.7	131.3	100.9	102.3	134.9	2010	1er
	2nd	141.7	172.1	100.7	129.7	103.6	101.4	146.5	98.7	130.1	101.0	102.3	135.9		2ème
	3rd	141.6	172.4	100.4	129.9	103.8	101.1	147.5	98.7	130.1	101.0	102.2	136.0		3ème
	4th	142.2	173.9	100.5	129.6	104.1	100.5	147.7	98.9	130.1	101.0	102.2	136.3		4ème
2011	1st	140.8	172.1	100.5	129.3	103.7	101.6	147.8	98.9	130.2	104.4	102.1	135.8	2011	1er
	2nd	141.8	173.5	101.5	131.7	101.6	101.6	150.5	98.8	129.7	104.1	102.4	136.7		2ème
	3rd	144.0	177.2	102.6	131.7	100.3	101.8	140.4	98.8	136.3	105.9	100.2	137.4		3ème
	4th	143.2	177.1	99.9	131.6	105.2	101.3	144.3	99.2	136.4	106.1	106.8	137.7		4ème
2012	1st	144.8	176.8	98.5	132.1	106.7	101.6	143.8	97.9	134.8	107.8	107.2	138.6	2012	1er
	2nd	145.5	177.6	100.6	130.3	106.8	100.6	143.8	97.8	135.4	107.6	109.9	138.7		2ème
	3rd	145.9	177.7	102.5	129.7	107.7	100.2	143.7	98.0	136.0	107.6	110.0	138.9		3ème
	4th	145.5	177.6	102.7	129.8	107.8	100.2	143.6	98.3	139.4	107.6	112.8	139.0		4ème
2013	1st	146.9	177.7	103.3	132.8	108.7	101.0	143.8	98.7	140.6	110.1	112.0	140.5	2013	1er
	2nd	147.4	178.3	106.0	133.6	107.1	101.1	143.3	98.7	137.8	110.5	114.3	140.8		2ème

Source : Vanuatu National Statistics Department / Bureau National de la Statistique

**PRICE INDICES**

**Table 4.3 Consumer Price Indices by Expenditure Group, Port Vila**

**Base: 1st Quarter 2000 = 100**

**Tableau 4.3 Indice des prix à la consommation par poste de dépense**

**Base: 1er Trimestre 2000 = 100**

Year	Quarter	Food Produits alimentaires	Alcoholic drinks and Tobacco Boisson alcoolisée et tabac	Clothing & Footwear Habillement	Housing & Utilities Loyer, eau, et énergie etc.	Household Supplies Mobilier et équipement ménager etc.	Health Santé	Transport	Communication	Recreation Loisir	Education	Miscellaneous Autres	All Groups Indice Global	Année	Trimestre
<b>Port Vila</b>														<b>Port Vila</b>	
2010	1st	139.5	175.9	101.6	124.4	103.4	101.2	148.1	98.5	132.9	101.9	102.1	134.6	2010	1er
	2nd	141.4	177.5	101.6	126.3	102.7	101.6	148.1	98.5	131.4	102.0	102.1	135.6		2ème
	3rd	140.8	177.9	101.3	126.5	102.9	101.3	149.2	98.5	131.4	102.0	102.0	135.6		3ème
	4th	141.2	178.3	101.3	126.3	103.2	100.7	149.4	98.5	131.4	102.0	102.1	135.7		4ème
2011	1st	140.2	176.0	101.3	126.3	102.7	100.9	149.9	98.6	131.5	106.3	102.0	135.5	2011	1er
	2nd	141.3	177.4	102.4	128.8	100.3	100.9	152.8	98.6	131.2	105.9	102.0	136.5		2ème
	3rd	144.4	181.8	105.1	127.6	99.4	101.0	141.3	98.5	138.9	106.7	99.5	137.2		3ème
	4th	142.9	181.7	101.4	127.5	105.1	101.4	145.7	99.0	138.8	106.9	107.4	137.6		4ème
2012	1st	145.0	181.8	99.9	127.9	106.6	101.4	145.7	97.6	136.8	106.9	107.4	138.3	2012	1er
	2nd	146.2	182.2	102.1	125.9	106.7	100.5	145.7	97.6	137.4	106.7	109.7	138.5		2ème
	3rd	146.6	182.3	104.1	125.2	107.9	100.1	145.5	97.7	138.0	106.7	109.9	138.7		3ème
	4th	146.2	182.2	104.3	125.2	108.0	100.1	145.4	97.8	142.0	106.7	113.1	138.8		4ème
2013	1st	147.3	182.1	104.6	128.5	109.1	101.0	146.2	98.1	143.3	109.4	111.7	140.3	2013	1er
	2nd	147.6	182.4	106.6	129.3	106.4	101.1	146.5	98.2	140.4	109.9	114.3	140.5		2ème

Source : Vanuatu National Statistics Department / Bureau National de la Statistique

**PRICE INDICES**

**Table 4.4 Consumer Price Indices by Expenditure Group, Luganville**

**Base: 1st Quarter 2000 = 100**

**Tableau 4.4 Indice des prix à la consommation par poste de dépense**

**Base: 1er Trimestre 2000 = 100**

Year	Quarter	Food Produits alimentaires	Alcoholic drinks and Tobacco Boisson alcoolisée et tabac	Clothing & Footwear Habillement	Housing & Utilities Loyer, eau, et énergie etc.	Household Supplies Mobilier et équipement ménager etc.	Health Santé	Transport	Communication	Recreation Loisir	Education	Miscellaneous Autres	All Groups Indice Global	Année	Trimestre
<b>Luganville</b>														<b>Luganville</b>	
2010	1st	143.3	144.7	97.7	148.3	108.3	99.4	137.6	100.3	122.4	97.5	103.8	136.3	2010	1er
	2nd	144.3	147.3	97.6	148.8	108.3	99.4	138.4	100.3	122.3	97.5	103.8	137.1		2ème
	3rd	146.3	147.4	97.5	148.9	108.4	99.5	138.6	100.3	122.6	97.5	103.8	138.0		3ème
	4th	147.4	152.7	97.5	147.5	108.4	99.5	138.6	101.3	122.9	97.5	103.1	138.8		4ème
2011	1st	144.5	152.7	97.7	145.0	109.0	106.8	137.0	100.7	122.9	97.5	103.1	137.1	2011	1er
	2nd	145.3	153.7	98.3	146.7	109.3	106.8	138.8	100.1	121.4	97.6	104.8	137.9		2ème
	3rd	143.9	154.9	93.0	155.7	104.8	107.5	135.9	100.1	121.4	102.9	104.9	138.4		3ème
	4th	145.4	155.6	94.3	155.3	105.6	107.6	137.0	100.5	122.8	102.9	103.1	139.3		4ème
2012	1st	145.3	153.3	93.5	156.6	106.4	103.1	134.0	99.5	123.5	110.9	106.0	139.8	2012	1er
	2nd	145.4	155.6	94.3	155.3	105.6	107.6	137.0	100.5	122.8	102.9	103.1	139.3		2ème
	3rd	144.6	155.6	96.5	156.8	106.3	101.1	134.2	99.5	124.8	110.9	111.1	139.9		3ème
	4th	144.3	155.6	96.7	157.5	106.1	101.1	134.3	101.5	124.8	110.9	110.8	140.0		4ème
2013	1st	146.5	156.0	98.5	158.4	106.1	101.2	131.0	102.0	125.2	112.4	113.6	141.2	2013	1er
	2nd	147.9	157.5	103.9	158.9	110.5	101.2	126.4	102.0	122.9	112.8	114.8	142.3		2ème

Source : Vanuatu National Statistics Department / Bureau National de la Statistique



**Table 5.1 Summary Statement of Total Government Operation**  
**Tableau 5.1 Déclaration sommaire du total des opérations du gouvernement**

**In million Vatu**  
**En millions de Vatu**

Period	TAX REVENUE			NON TAX REVENUE			EXPENSE								Net Operating Balance (NOB)	NOB - Excluding Donors	Année	Trimestre		
	Taxes on Property	Taxes on Goods and Services	Taxes on International Trade and Transaction	Total Tax Revenue	Grants	Other Revenue	Total Revenue	Compensation of Employees	Use of Goods and Services	Interest	Subsidies	Grants	Social Benefit	Other Expenses					Total Expenses	
2010	485	7,957	2,646	11,089	4,431	1,187	16,707	7,831	4,693	334	-	1,510	410	331	15,109	1,599	-	2,832.9	2010	
2011	431	8,328	2,871	11,630	2,883	1,220	15,733	7,870	4,684	398	-	1,573	240	669	15,434	299	-	2,584.2	2011	
2012	548	8,871	2,580	11,999	2,158	1,606	15,763	8,409	4,053	605	-	1,798	310	562	15,738	25	-	2,132.5	2012	
2010 1st	113	2,256	640	3,010	1,174	189	4,372	1,554	1,006	109	-	536	105	58	3,368	1,004	-	169.8	2010	1er
2nd	133	1,658	538	2,329	1,770	265	4,364	2,030	1,161	67	-	381	93	90	3,821	543	-	1,226.9		2ème
3rd	137	2,008	689	2,835	952	339	4,126	1,816	1,094	102	-	496	132	100	3,740	386	-	566.2		3ème
4th	101	2,036	778	2,915	535	395	3,845	2,431	1,433	56	-	97	81	83	4,180	335	-	870.1		4ème
2011 1st	87	2,361	615	3,062	1,598	319	4,979	1,597	1,185	87	-	673	48	168	3,759	1,220	-	377.8	2011	1er
2nd	96	1,838	688	2,622	711	244	3,577	2,086	1,233	91	-	283	37	207	3,937	360	-	1,070.2		2ème
3rd	130	2,239	752	3,121	333	389	3,844	2,138	1,179	176	-	285	71	142	3,991	148	-	481.0		3ème
4th	117	1,891	817	2,824	241	268	3,334	2,049	1,087	44	-	331	84	152	3,748	414	-	655.3		4ème
2012 1st	158	2,364	571	3,094	743	548	4,386	1,971	906	123	-	547	70	225	3,842	544	-	199.7	2012	1er
2nd	119	1,870	558	2,547	1,004	308	3,859	1,874	1,148	110	-	290	67	128	3,617	241	-	762.9		2ème
3rd	124	2,212	700	3,037	170	515	3,722	2,459	976	186	-	646	56	139	4,460	739	-	908.3		3ème
4th	147	2,425	750	3,322	240	234	3,796	2,106	1,022	186	-	315	117	71	3,818	21	-	261.6		4ème
2013 1st	97	2,781	543	3,421	161	382	3,965	1,970	811	112	-	494	42	240	3,670	295	-	133.8	2013	1er
2nd	79	2,246	675	3,000	853	321	4,174	1,962	1,166	160	-	287	83	116	3,776	398	-	454.5		2ème

Source : Department of Finance / service des Finances

**Table 5.2 Government Transactions in Nonfinancial Assets; Financial Assets and Liabilities (Financing)**  
**Tableau 5.2 Opérations de l'Etat sur actifs non financiers, les actifs et passifs financiers (financement)**

**In million Vatu**  
**En millions de Vatu**

Period	NonFinancial Assets					Financial Assets				Liabilities (Financing)			Année	Trimestre	
	Fixed assets	Change in inventories	Valuables	Non produced assets	Net acquisition of Nonfinancial assets	Domestic	Foreign	Monetary gold and SDRs	Net acquisition of financial assets	Domestic	Foreign	Net incurrence of liabilities			Net lending / borrowing
2009	4162.9	0.0	0.0	0.0	4162.9	-248.4	0.0	0.0	-248.4	-98.3	385.0	286.7	-535.1	2009	
2010	3306.8	0.0	0.0	0.0	3306.8	-942.4	0.0	0.0	-942.4	800.0	-34.2	765.8	-1708.2	2010	
2011	1880.6	0.0	0.0	0.0	1880.6	-349.1	0.0	0.0	-349.1	950.2	282.4	1232.6	-1581.7	2011	
2012	872.3	0.0	0.0	0.0	872.3	269.8	0.0	0.0	269.8	1388.6	-413.9	974.6	-704.8	2012	
2010 1st	686.6	0.0	0.0	0.0	686.6	148.7	0.0	0.0	148.7	0.0	-169.0	-169.0	317.7	2010	1er
2nd	822.9	0.0	0.0	0.0	822.9	-362.2	0.0	0.0	-362.2	0.0	-82.2	-82.2	-280.0		2ème
3rd	727.1	0.0	0.0	0.0	727.1	288.1	0.0	0.0	288.1	800.0	-170.9	629.1	-341.1		3ème
4th	1070.2	0.0	0.0	0.0	1070.2	-1017.0	0.0	0.0	-1017.0	0.0	387.9	387.9	-1404.8		4ème
2011 1st	758.8	0.0	0.0	0.0	758.8	382.9	0.0	0.0	382.9	0.0	-78.7	-78.7	461.5	2011	1er
2nd	175.7	0.0	0.0	0.0	175.7	170.7	0.0	0.0	170.7	750.1	-44.1	706.0	-535.3		2ème
3rd	292.8	0.0	0.0	0.0	292.8	-420.4	0.0	0.0	-420.4	100.1	-80.0	20.1	-440.6		3ème
4th	653.3	0.0	0.0	0.0	653.3	-482.3	0.0	0.0	-482.3	100.0	485.1	585.1	-1067.4		4ème
2012 1st	65.3	0.0	0.0	0.0	65.3	773.9	0.0	0.0	773.9	453.1	-157.7	295.4	478.5	2012	1er
2nd	243.7	0.0	0.0	0.0	243.7	550.0	0.0	0.0	550.0	601.2	-48.8	552.4	-2.4		2ème
3rd	288.3	0.0	0.0	0.0	288.3	-1178.7	0.0	0.0	-1178.7	7.9	-159.6	-151.7	-1027.0		3ème
4th	274.9	0.0	0.0	0.0	274.9	124.7	0.0	0.0	124.7	326.4	-47.8	278.6	-153.9		4ème
2013 1st	193.1	0.0	0.0	0.0	193.1	24.7	0.0	0.0	24.7	0.0	-77.5	-77.5	102.2	2013	1er
2nd	167.9	0.0	0.0	0.0	167.9	25.4	0.0	0.0	25.4	-100.0	-104.9	-204.9	230.2		2ème

Source : Department of Finance / service des Finances

**Table 6.1 Summary of Overseas Trade**  
**Tableau 6.1 Récapitulatif du commerce extérieur**

**In Million Vatu**  
**En millions de Vatu**

Year	Quarter	EXPORTS F.O.B / EXPORTATION FAB				IMPORTS C.I.F / IMPORTATIONS CAF							Année	Trimestre	
		Domestic Exports Exportation de produits locaux			Re-exports	Total Exports	Imports for Home Consumption / Importations destinées à la Consommation intérieure			Imports for Re- exports	Total Imports	Trade Balance			Balance Ratio
		Luganville	Port Vila	Total	Ré- exportations	Total des Exportations (E)	Luganville	Port Vila	Total	Importations pour ré- exportations	Total des Importations (I)	Déficit Commercial (E)-(I)			Taux de Couverture (E)/(I)
2010		2,649	1,855	4,480	214	4,695	3,904	23,486	27,390	119	27,510	(22,792)	0.2	2010	
2011		3,816	2,196	6,012	-	6,012	4,259	22,803	27,062	193	27,256	(21,243)	0.9	2011	
2012		3,305	1,768	5,073	-	5,073	4,075	22,832	26,908	547	27,454	(22,381)	0.7	2012	
2010	1st	170	407	577	121	698	692	5,176	5,868	22	5,890	(5,192)	0.1	2010	1er
	2nd	604	450	1,055	35	1,090	830	5,258	6,087	38	6,125	(5,011)	0.2		2ème
	3rd	871	531	1,402	58	1,460	1,213	6,652	7,865	30	7,895	(6,436)	0.2		3ème
	4th	980	467	1,447	-	1,447	1,170	6,401	7,570	30	7,600	(6,153)	0.2		4ème
2011	1st	897	506	1,403	-	1,403	1,039	5,370	6,409	54	6,464	(5,060)	0.2	2011	1er
	2nd	1,038	547	1,585	-	1,585	1,035	5,005	6,040	13	6,053	(4,468)	0.3		2ème
	3rd	823	712	1,534	-	1,534	901	6,337	7,239	29	7,267	(5,733)	0.2		3ème
	4th	1,058	431	1,489	-	1,489	1,284	6,090	7,375	97	7,472	(5,983)	0.2		4ème
2012	1st	761	384	1,145	-	1,145	910	4,661	5,571	110	5,681	(4,536)	0.2	2012	1er
	2nd	938	513	1,451	-	1,451	942	5,610	6,553	110	6,663	(5,211)	0.2		2ème
	3rd	888	403	1,290	-	1,290	1,257	6,331	7,588	279	7,867	(6,577)	0.2		3ème
	4th	719	467	1,186	-	1,186	966	6,230	7,196	48	7,244	(6,057)	0.2		4ème
2013	1st	476	287	764	-	764	1,056	5,531	6,587	35	6,622	(5,858)	0.1	2013	1er
	2nd	498	251	749	-	749	1,041	6,145	7,186	38	7,224	(6,475)	0.1		2ème

Source: Department of Customs and Inland Revenue / Service des Douanes et Contributions Indirectes

**Table 6.2 Principal Domestic Exports, in Value**  
**Tableau 6.2 Principales exportations de produits locaux, en valeur**

**In million Vatu**  
**En millions de Vatu**

Year	Quarter	Copra	Coconut oil	Beef veal	Cocoa	Shell	Sawn Timber	Cowhides	Kava	Coffee	Vanilla	Coconut Meal	Root crops	Live Fish	Alcoholic Drink	Fish	Other products	Total	Année	Trimestre
		Coprah	Huile de coco	Viande bovine	Cacao	Coquillages	Bois débité	Cuir et peaux		Café	Vanille	Farine de coprah	Récolte de racines	Poisson vivant	Boissons Alcoolisées	Poisson	Autres produits			
2010		579	933	494	384	31	26	15	508	3	5	54	-	324	209	36	881	4,480	2010	
2011		1,065	1,592	516	247	30	65	29	762	18	5	87	1	166	175	359	898	6,012	2011	
2012		1,088	1,162	518	258	27	42	27	661	3	11	92	-	136	161	185	702	5,073	2012	
2010	1st	36	-	96	15	-	14	3	83	1	2	-	-	98	10	10	209	577	2010	1er
	2nd	91	199	117	187	20	6	4	102	-	1	14	-	45	79	9	182	1,055		2ème
	3rd	148	349	151	100	11	5	5	160	-	1	24	-	94	74	3	277	1,402		3ème
	4th	304	386	130	82	1	1	3	163	1	1	16	-	86	45	14	213	1,447		4ème
2011	1st	306	432	136	6	9	3	8	98	1	1	14	0	46	40	188	115	1,403	2011	1er
	2nd	385	292	128	104	1	31	8	190	7	1	33	-	49	50	99	206	1,585		2ème
	3rd	205	302	132	88	9	0	6	239	0	2	26	1	40	45	54	384	1,534		3ème
	4th	169	565	121	48	11	30	7	234	10	0	14	-	30	41	17	193	1,489		4ème
2012	1st	434	208	123	10	0	8	7	97	0	3	14	-	48	30	29	133	1,145	2012	1er
	2nd	298	317	135	70	1	20	7	189	0	5	26	-	56	21	69	237	1,451		2ème
	3rd	253	280	120	97	14	5	6	195	2	1	28	-	17	60	74	138	1,290		3ème
	4th	102	357	140	81	12	8	7	179	0	2	23	-	16	51	13	194	1,186		4ème
2013	1st	143	90	89	23	6	15	8	168	3	2	25	-	20	36	55	83	764	2013	1er
	2nd	83	95	73	98	8	10	4	223	1	1	17	-	25	21	33	57	749		2ème

Source: Department of Customs and Inland Revenue / Service des Douanes et Contributions Indirectes

Table 6.3 Principal Domestic Exports, in Quantity

Tableau 6.3 Principales exportations, en quantité

In tonnes

En tonnes

Year	Quarter	Copra	Coconut oil	Beef veal	Cocoa	Shell	Cowhides	Kava	Coffee	Vanilla	Coconut Meal	Root crops	Live Fish	Fish	Année	Trimestre
		Coprah	Huile de coco	Viande bovine	Cacao	Coquillages	Cuir et peaux		Café	Vanille	Farine de coprah	Récolte de racines	Poisson vivant	Poisson		
2010		12,133	10,325	1,123	1,525	10	226	498	4	2	5,222	-	238	1,445	2010	
2011		13,596	12,000	1,104	1,068	10	336	734	27	1	6,917	4	205	3,116	2011	
2012		16,846	10,011	760	1,231	9	387	643	3	3	6,082	-	74	486	2012	
2010	1st	1,067	-	214	60	-	50	69	1	-	-	-	47	159	2010	1er
	2nd	2,042	2,579	279	651	6	53	115	-	-	1,327	-	46	400		2ème
	3rd	3,419	3,943	341	438	3	81	154	1	-	2,258	-	38	460		3ème
	4th	5,605	3,803	289	375	-	42	160	2	-	1,638	-	107	426		4ème
2011	1st	3,768	3,461	300	25	3	102	94	1	0	1,172	0	102	1,973	2011	1er
	2nd	4,526	1,956	270	446	0	88	186	11	0	2,534	-	41	452		2ème
	3rd	3,033	2,299	290	380	3	64	225	0	1	2,137	4	40	265		3ème
	4th	2,269	4,284	245	217	4	81	230	15	0	1,074	-	22	425		4ème
2012	1st	6,188	1,674	236	40	0	80	99	1	1	1,079	-	-	39	2012	1er
	2nd	5,098	2,696	284	381	0	83	184	0	2	1,628	-	56	196		2ème
	3rd	3,791	2,423	240	539	4	105	187	2	0	1,708	-	18	230		3ème
	4th	1,769	3,218	271	454	4	119	173	0	1	1,667	-	21	43		4ème
2013	1st	4,022	838	205	136	2	114	158	3	1	1,660	-	13	150	2013	1er
	2nd	2,438	1,689	142	491	3	72	223	1	0	1,162	-	21	84		2ème

Source: Department of Customs and Inland Revenue / Service des Douanes et Contributions Indirectes

**Table 6.4 Principal Commodity Average Export Prices**  
**Tableau 6.4 Prix moyens à l'exportation des principaux produits**

Vatu per Kg

Year	Quarter	Copra	Coconut oil	Beef veal	Cocoa	Shell	Cowhides	Kava	Vanilla	Coconut meal	Root crops	Live Fish	Année	Trimestre
		Coprah	Huile de coco	Viande bovine	Cacao	Coquillages	Cuir et peaux		Vanille	Farine de coprah	Récolte de racines	Poisson vivant		
2010		48	90	440	251	3,164	64	1,020	3,415	15	103	1,361	2010	
2011		78	133	467	231	2,993	193	1,037	3,141	13	185	809	2011	
2012		65	116	682	209	3,063	69	1,028	3,226	15	-	1,849	2012	
2010	1st	33	-	446	251	-	58	1,204	3,419	-	103	2,088	2010	1er
	2nd	44	77	420	286	3,175	68	884	3,264	28	-	983		2ème
	3rd	43	88	443	227	3,129	60	1,041	3,192	11	-	2,495		3ème
	4th	54	102	450	220	3,500	76	1,018	3,776	10	-	802		4ème
2011	1st	81	125	453	237	3,040	32	1,051	3,160	12	125	1,128	2011	1er
	2nd	85	150	474	233	3,067	89	1,020	3,091	13	-	5,067		2ème
	3rd	68	131	455	233	2,938	96	1,062	3,113	12	-	9,625		3ème
	4th	74	132	491	222	2,992	85	1,021	3,455	13	-	8,651		4ème
2012	1st	70	124	521	258	3,333	82	985	3,634	13	-	1,221	2012	1er
	2nd	59	118	475	184	3,412	86	1,028	3,072	16	-	988		2ème
	3rd	67	116	502	180	3,092	58	1,042	3,162	17	-	942		3ème
	4th	58	111	517	178	3,399	59	1,038	3,176	14	-	795		4ème
2013	1st	35	108	433	167	2,971	72	1,062	3,137	15	-	1,593	2013	1er
	2nd	34	57	514	200	-	60	999	3,652	15	-	1,227		2ème

Source: Department of Customs and Inland Revenue / Service des Douanes et Contributions Indirectes

**Table 6.5 Domestic Exports by Country Groupings, in Value**  
**Tableau 6.5 Exportation de produits locaux par pays-clients, en valeur**

**In million Vatu**  
**En millions de Vatu**

Year	Quarter	European Community	Japan	Australia	New Caledonia	South Korea	New Zealand	Other MSG*	Other Countries	Total	Année	Trimestre
		Communauté Européene	Japon	Australie	Nouvelle Calédonie	Corée du Sud	Nouvelle Zélande	Autres GFLM*	Autres Pays			
2010		215	204	547	370	14	308	560	2,264	4,480	2010	
2011		181	317	679	342	19	686	888	2,900	6,012	2011	
2012		70	305	1,102	265	21	171	712	2,426	5,073	2012	
2010	1st	19	22	90	49	7	27	131	232	577	2010	1er
	2nd	27	54	65	134	0	65	87	623	1,055		2ème
	3rd	62	72	293	94	5	96	171	608	1,402		3ème
	4th	107	56	99	93	1	121	171	800	1,447		4ème
2011	1st	34	74	251	58	0	101	288	597	1,404	2011	1er
	2nd	59	117	250	78	3	188	188	701	1,585		2ème
	3rd	38	76	64	103	14	292	218	729	1,534		3ème
	4th	50	51	114	103	1	105	193	872	1,489		4ème
2012	1st	31	57	337	32	5	57	146	479	1,145	2012	1er
	2nd	11	113	228	93	1	39	174	793	1,451		2ème
	3rd	8	102	69	72	1	47	183	808	1,290		3ème
	4th	20	33	468	68	15	28	208	346	1,186		4ème
2013	1st	8	65	163	57	8	25	147	291	764	2013	1er
	2nd	8	61	153	51	0	24	126	326	749		2ème

Source: Department of Customs and Inland Revenue / Service des Douanes et Contributions Indirectes

\* Solomon Islands, Fiji and PNG

**Table 6.6 Imports Cleared for Home Consumption, in Value**  
**Tableau 6.6 Importations destinées à la consommation intérieure par produit selon la Classification Type pour le Commerce International, en valeur**

**In million Vatu**  
**En million de Vatu**

Year	Quarter	Food & Live Animals	Beverages & Tobacco	Crude Materials Except Fuels	Mineral Fuels	Oils, Fats & Waxes	Chemical Products	Basic Manufactured Products	Machines & Transport Equipment	Miscellaneous Manufactured Goods	Goods N.E.C.	Total	Année	Trimestre
		Produits alimentaires et animaux vivants	Boissons et tabacs	Matières brutes non combustibles	Energie fossile	Huiles et graisses animales et végétales	Produits chimiques	Produits manufacturés	Machines et matériels de transports	Produits manufacturés divers	Articles et transactions, N.C.A			
2010		5,108	1,023	419	3,618	133	2,923	3,817	7,252	2,735	361	27,390	2010	
2011		5,537	1,038	379	4,835	129	2,855	3,566	5,542	2,820	362	27,062	2011	
2012		5,307	1,153	432	4,621	141	2,809	3,590	5,964	2,575	314	26,907	2012	
2010	1st	1,028	233	91	562	25	661	845	1,889	469	66	5,868	2010	1er
	2nd	950	170	93	1,205	32	680	808	1,543	522	84	6,087		2ème
	3rd	1,516	239	128	1,122	27	765	1,166	2,019	773	111	7,865		3ème
	4th	1,614	381	107	729	50	817	999	1,801	972	100	7,570		4ème
2011	1st	1,044	216	77	1,208	22	750	935	1,527	582	49	6,410	2011	1er
	2nd	1,343	239	74	866	29	729	822	1,134	705	98	6,039		2ème
	3rd	1,551	297	123	1,266	35	699	946	1,468	773	80	7,238		3ème
	4th	1,599	286	103	1,495	43	678	864	1,414	759	134	7,375		4ème
2012	1st	1,103	303	79	855	41	630	736	1,243	494	86	5,571	2012	1er
	2nd	1,059	225	90	1,442	20	647	804	1,585	607	74	6,553		2ème
	3rd	1,552	257	128	1,471	44	675	1,087	1,615	684	75	7,588		3ème
	4th	1,594	367	136	853	36	858	962	1,521	791	79	7,196		4ème
2013	1st	1,394	236	88	1,204	24	548	1,006	1,332	657	100	6,587	2013	1er
	2nd	1,349	315	154	1,503	29	689	879	1,457	731	80	7,186		2ème

Source: Department of Customs and Inland Revenue / Service des Douanes et Contributions Indirectes



**Table 6.7 Imports for Home Consumption by main Countries of Consignment, Value**  
**Tableau 6.7 Importations pour consommation intérieure par principaux pays fournisseurs, en valeur**

**In million Vatu**  
**En millions de Vatu**

Year	Quarter	Australia	New Zealand	Fiji	Japan	France	New Caledonia	Hong Kong	Singapore	Other Countries	Total	Année	Trimestre
		Australie	Nouvelle Zélande	Iles Fidji	Japon		Nouvelle Calédonie	Hong-Kong	Singapour	Autres Pays			
2010		8,540	3,725	2,138	1,007	661	632	290	3,456	6,941	27,390	2010	
2011		8,092	3,103	1,686	696	875	471	1,246	4,928	5,965	27,062	2011	
2012		8,292	3,424	2,089	655	751	488	482	4,544	6,183	26,907	2012	
2010	1st	1,683	936	610	347	125	109	45	387	1,625	5,868	2010	1er
	2nd	1,727	885	512	161	190	92	30	1,146	1,343	6,087		2ème
	3rd	2,537	952	537	193	194	255	124	1,117	1,956	7,865		3ème
	4th	2,593	952	479	306	152	175	91	806	2,016	7,570		4ème
2011	1st	1,798	849	476	192	248	122	125	1,182	1,417	6,410	2011	1er
	2nd	1,925	792	557	204	263	86	58	843	1,311	6,039		2ème
	3rd	2,234	869	498	170	240	136	91	1,296	1,704	7,239		3ème
	4th	2,135	593	155	130	124	127	971	1,606	1,533	7,375		4ème
2012	1st	1,757	663	447	115	225	168	88	818	1,289	5,571	2012	1er
	2nd	1,946	787	466	108	175	68	132	1,424	1,446	6,553		2ème
	3rd	2,081	695	187	113	223	125	980	1,750	1,434	7,588		3ème
	4th	2,508	994	483	208	163	128	148	868	1,697	7,196		4ème
2013	1st	1,804	739	652	330	180	66	96	1,192	1,527	6,587	2013	1er
	2nd	1,991	934	644	165	275	78	177	1,460	1,463	7,186		2ème

Source: Department of Customs and Inland Revenue / Service des Douanes et Contributions Indirectes

**Table 6.8 Selected ten major imported items, In Value**  
**Tableau 6.8 Les dix premiers articles d'importation, en valeur**

**In Million Vatu**  
**En million de Vatu**

Year	Quarter	Cigarettes & tobacco	Distillate fuels (ADO)	Jet fuel and aviation kerosene	Motor spirit (PMS)	Motor Vehicles transport	Personal & Household effects	Pharmaceutical products	Cement	Rice	Wheat flour/ mesline flour	Total Value of Major ten items	Percentage share of total imports	Année	Trimestre
		Tabac et cigarettes	Fuels distillés	Kérosene	Essence pour automobiles	Véhicules à moteur	Effets personnels	Produits pharmaceutiques	Ciment	Riz	Farine	Montant total	Pourcentage du total des importations		
2010		300	2,195	414	557	190	330	1,423	422	1,068	312	7,211	26.2	2010	
2011		322	3,050	582	660	169	356	1,427	371	968	383	8,287	30.4	2011	
2012		312	2,784	614	680	298	310	1,322	444	1,100	315	8,179	29.8	2012	
2010	1st	73	328	69	62	34	65	322	149	196	53	1,350	22.9	2010	1er
	2nd	49	755	128	194	29	82	361	93	116	83	1,890	30.9		2ème
	3rd	55	748	65	187	80	84	376	103	381	85	2,164	27.4		3ème
	4th	124	364	151	115	47	99	364	77	375	91	1,806	23.8		4ème
2011	1st	65	808	87	148	71	49	416	106	100	79	1,929	29.8	2011	1er
	2nd	66	558	54	113	27	97	361	107	244	104	1,730	28.6		2ème
	3rd	107	812	218	126	41	78	324	91	385	90	2,273	31.3		3ème
	4th	83	873	223	272	30	132	327	67	238	111	2,356	31.5		4ème
2012	1st	91	476	139	146	27	86	318	82	200	65	1,629	28.7	2012	1er
	2nd	85	945	122	233	198	72	313	125	186	64	2,344	35.2		2ème
	3rd	46	867	239	193	36	74	310	143	387	104	2,399	30.5		3ème
	4th	89	496	114	109	36	78	381	94	327	83	1,807	24.9		4ème
2013	1st	63	664	229	204	43	99	254	94	292	101	2,042	30.8	2013	1er
	2nd	75	1,001	156	206	29	78	253	84	274	97	2,254	31.2		2ème

Source: Department of Customs and Inland Revenue / Service des Douanes et Contributions Indirectes - (revised table with new additional items from 2000 - 2012)

**Table 7.1 Summary of Internal Migration Arrival Statistics**  
**Tableau 7.1 Résumé des échanges migratoires avec l'extérieur**

Year	Quarter	ARRIVALS / ARRIVEES									Day Visitors Visiteurs d'un jour	TOTAL VISITORS NOMBRE DE VISITEURS	Année	Trimestre
		PORT VILA			LUGANVILLE			TOTAL						
		Residents Résidents	Visitors Visiteurs	Total	Residents Résidents	Visitors Visiteurs	Total	Residents Résidents	Visitors Visiteurs	Total				
2010		20,531	94,909	115,440	522	2,271	2,793	21,053	97,180	118,233	140,468	237,648	2010	
2011		21,752	91,107	112,859	521	2,853	3,374	22,273	93,960	116,233	154,938	248,898	2011	
2012		22,594	105,611	128,205	364	2,550	2,914	22,958	108,161	131,119	213,243	321,404	2012	
2010	1st	4,406	19,668	24,074	106	229	335	4,512	19,897	24,409	33,930	53,827	2010	1er
	2nd	5,271	20,976	26,247	112	547	659	5,383	21,523	26,906	33,316	54,839		2ème
	3rd	5,355	28,638	33,993	132	875	1,007	5,487	29,513	35,000	32,186	61,699		3ème
	4th	5,499	25,627	31,126	172	620	792	5,671	26,247	31,918	41,036	67,283		4ème
2011	1st	4,471	16,313	20,784	112	287	399	4,583	16,600	21,183	40,965	57,565	2011	1er
	2nd	5,234	21,483	26,717	125	698	823	5,359	22,181	27,540	51,119	73,300		2ème
	3rd	5,966	28,877	34,843	132	1,020	1,152	6,098	29,897	35,995	31,988	61,885		3ème
	4th	6,081	24,434	30,515	152	848	1,000	6,233	25,282	31,515	30,866	56,148		4ème
2012	1st	5,097	19,385	24,482	96	413	509	5,193	19,798	24,991	63,601	83,399	2012	1er
	2nd	5,637	24,846	30,483	65	464	529	5,702	25,310	31,012	45,833	71,143		2ème
	3rd	5,605	33,512	39,117	76	845	921	5,681	34,357	40,038	43,280	77,637		3ème
	4th	6,255	27,868	34,123	127	828	955	6,382	28,696	35,078	60,529	89,225		4ème
2013	1st	4,986	19,049	24,035	125	471	596	5,111	19,520	24,631	65,678	85,198	2013	1er
	2nd	6,505	26,315	32,820	147	1,223	1,370	6,652	27,538	34,190	62,005	89,543		2ème

Source : Department of Immigration / Services de l'Immigration

**Table 7.2 Arrivals of Residents by Nationality**  
**Tableau 7.2 Résidents par nationalité**

Year	Quarter	Ni-Vanuatu	Australian	French	British	New Zealander	Asian	Pacific Islanders	North American	Other Countries	TOTAL	Année	Trimestre
			Australiens	Français	Britanniques	Néo-Zélandais	Asiatiques	Iles du Pacifique	Amérique du Nord	Autres Pays			
2010		11,794	3,700	1,894	132	1,436	504	768	496	330	21,053	2010	
2011		12,508	3,867	1,802	244	1,370	719	1,090	352	321	22,273	2011	
2012		14,317	3,629	1,526	203	1,236	696	686	370	295	22,958	2012	
2010	1st	2,232	870	533	15	392	94	149	153	73	4,512	2010	1er
	2nd	3,431	854	392	26	318	117	101	88	55	5,383		2ème
	3rd	2,897	929	497	46	369	170	319	152	108	5,487		3ème
	4th	3,234	1,046	472	45	357	122	199	103	93	5,671		4ème
2011	1st	1,991	976	506	62	353	171	371	73	80	4,583	2011	1er
	2nd	3,227	885	397	56	334	157	148	83	72	5,359		2ème
	3rd	3,586	967	431	51	337	190	347	86	103	6,098		3ème
	4th	3,704	1,039	468	75	346	201	224	110	66	6,233		4ème
2012	1st	3,019	845	382	56	335	175	234	78	69	5,193	2012	1er
	2nd	3,599	912	363	46	308	205	130	82	57	5,702		2ème
	3rd	3,619	853	388	50	293	152	141	108	77	5,681		3ème
	4th	4,080	1,019	393	51	300	164	181	102	92	6,382		4ème
2013	1st	2,586	983	453	46	362	209	266	110	96	5,111	2013	1er
	2nd	4,204	1,002	423	69	337	227	187	108	95	6,652		2ème

Source : Department of Immigration / Services de l'Immigration

**Table 7.3 Visitor Arrivals by Usual Country of Residence**  
**Tableau 7.3 Visiteurs par pays de résidence habituelle**

Year Quarter	Australia	New Zealand	New Caledonia	Other Pacific Countries	Europe	North America	Japan	Other Countries	TOTAL	Année	Trimestre
	Australie	Nouvelle-Zélande	Nouvelle-Calédonie	Autres Pays du Pacifique	Europe	Amérique du Nord	Japon	Autres Pays			
2010	58,760	11,927	11,410	4,719	4,888	2,395	517	2,564	97,180	2010	
2011	57,843	11,399	11,376	3,397	5,265	1,922	630	2,128	93,960	2011	
2012	65,405	14,430	13,138	4,313	5,491	2,094	705	2,585	108,161	2012	
2010 1st	11,590	1,837	2,787	1,312	1,066	569	143	594	19,897	2010	1er
2nd	12,575	3,146	2,373	966	1,074	598	101	692	21,523		2ème
3rd	17,754	4,457	3,027	1,195	1,536	684	137	723	29,513		3ème
4th	16,842	2,488	3,223	1,246	1,212	544	137	555	26,247		4ème
2011 1st	10,311	1,402	2,024	887	1,006	350	139	481	16,600	2011	1er
2nd	13,592	2,474	2,829	837	1,262	610	123	454	22,181		2ème
3rd	17,861	4,857	3,063	839	1,801	618	215	643	29,897		3ème
4th	16,079	2,666	3,460	834	1,196	344	153	550	25,282		4ème
2012 1st	12,010	1,752	2,979	927	1,040	366	160	564	19,798	2012	1er
2nd	15,360	3,349	2,915	1,034	1,268	555	169	660	25,310		2ème
3rd	20,620	5,908	3,343	1,182	1,741	628	212	723	34,357		3ème
4th	17,415	3,421	3,901	1,170	1,442	545	164	638	28,696		4ème
2013 1st	11,444	1,768	3,024	1,015	1,092	424	94	659	19,520	2013	1er
2nd	16,511	3,854	3,068	1,276	1,326	666	159	678	27,538		2ème

Source : Department of Immigration / Services de l'Immigration

Table 7.4 Visitor Arrivals by Purpose of Visit

Tableau 7.4 Visiteurs selon le motif du voyage

Year	Quarter	DAY VISITORS VISITEURS D'UN JOUR			VISITORS VISITEURS			TOTAL VISITORS	Année	Trimestre
		Cruiseship Navire de croisière	Stop Over Escale	Holiday Vacances	Visiting Friends and Relatives Visite à des amis ou à la famille	Business, Meeting, Conference Affaires, réunion, conférence	Other Purposes Autres motifs	Total Visitors Nombre de Visiteurs		
2010		140,468	692	80,681	6,079	9,615	113	97,180	237,648	2010
2011		154,938	790	75,821	7,320	9,933	96	93,960	248,898	2011
2012		213,243	602	88,085	7,910	11,294	270	108,161	321,404	2012
2010	1st	33,930	217	16,122	1,147	2,409	2	19,897	53,827	2010
	2nd	33,316	157	17,330	1,473	2,554	10	21,523	54,839	2ème
	3rd	32,186	205	24,105	1,988	3,143	72	29,513	61,699	3ème
	4th	41,036	113	23,124	1,471	1,510	29	26,247	67,283	4ème
2011	1st	40,965	198	13,066	1,361	1,969	6	16,600	57,565	2011
	2nd	51,119	253	17,495	1,723	2,686	24	22,181	73,300	2ème
	3rd	31,988	213	24,624	2,120	2,885	55	29,897	61,885	3ème
	4th	30,866	126	20,636	2,116	2,393	11	25,282	56,148	4ème
2012	1st	63,601	95	15,661	1,828	2,136	78	19,798	83,399	2012
	2nd	45,833	234	20,470	1,660	2,912	34	25,310	71,143	2ème
	3rd	43,280	145	28,742	2,141	3,271	58	34,357	77,637	3ème
	4th	60,529	128	23,212	2,281	2,975	100	28,696	89,225	4ème
2013	1st	65,678	136	15,303	1,627	2,139	315	19,520	85,198	2013
	2nd	62,005	123	22,055	1,846	2,512	1,002	27,538	89,543	2ème

Source : Department of Immigration / Services de l'Immigration

**Table 8 Exchange Rates: Averages of Rates Used by the Collector of Customs Department****Tableau 8 Taux de change: moyennes des taux utilisés par le Service des Douanes**

Year	Quarter	For 100 Vatu / Pour 100 vatu										Année	Trimestre
		\$AUD	£Stg	CFP	\$USD	\$NZD	¥JPY	\$FJD	\$HKD	€EUR	\$SGD		
2010		1.07	0.64	88.07	0.97	1.35	86.12	1.83	7.47	0.74	1.34	2010	
2011		1.02	0.67	89.38	1.04	1.32	84.18	1.83	8.05	0.76	1.32	2011	
2012		1.01	0.66	96.46	1.03	1.28	82.57	1.82	7.93	0.81	1.30	2012	
2010	1st	1.09	0.63	83.68	0.97	1.37	88.19	1.84	7.46	0.71	1.37	2010	1er
	2nd	1.08	0.65	89.01	0.96	1.36	89.30	1.83	7.38	0.75	1.34		2ème
	3rd	1.06	0.63	90.26	0.95	1.34	83.08	1.82	7.34	0.76	1.31		3ème
	4th	1.04	0.65	89.32	1.00	1.35	83.92	1.83	7.71	0.75	1.33		4ème
2011	1st	1.06	0.66	90.72	1.02	1.34	84.24	1.83	7.88	0.76	1.32	2011	1er
	2nd	1.00	0.66	88.31	1.05	1.33	87.16	1.84	8.14	0.74	1.32		2ème
	3rd	1.00	0.68	87.45	1.07	1.27	84.94	1.83	8.26	0.76	1.32		3ème
	4th	1.02	0.66	91.03	1.02	1.32	80.38	1.82	7.91	0.77	1.33		4ème
2012	1st	1.02	0.67	95.49	1.04	1.29	82.48	1.82	8.01	0.80	1.33	2012	1er
	2nd	1.01	0.66	95.01	1.02	1.29	83.13	1.82	7.86	0.80	1.30		2ème
	3rd	1.00	0.67	99.00	1.02	1.28	81.25	1.82	7.86	0.83	1.30		3ème
	4th	1.00	0.66	96.34	1.03	1.26	83.41	1.81	8.00	0.81	1.28		4ème
2013	1st	1.02	0.68	93.93	1.03	1.25	94.10	1.82	7.98	0.79	1.29	2013	1er
	2nd	1.02	0.68	94.91	1.02	1.24	99.88	1.63	7.89	0.80	1.29		2ème

Source: Department of Customs and Inland Revenue / Service des Douanes et Contributions Indirectes

**TRANSPORT**

**Table 9 Private Motor Vehicle Registrations in Port Vila and Luganville**

**Tableau 9 Immatriculation de véhicules privés à Port-Vila et Luganville**

Year	Quarter	Motorcars Autos	Pick-Ups Camionnettes	Trucks Camions	Buses Autobus, minibus	Motor-cycle Motocyclettes	Total	Année	Trimestre
2010		380	360	98	209	110	1,157	2010	
2011		426	355	68	229	94	1,162	2011	
2012		353	329	41	226	77	1,026	2012	
2010	1st	106	67	25	40	36	274	2010	1er
	2nd	101	92	26	44	25	288		2ème
	3rd	76	103	27	63	22	291		3ème
	4th	97	98	20	62	27	304		4ème
2011	1st	96	94	11	64	25	280	2011	1er
	2nd	115	95	23	82	25	340		2ème
	3rd	118	84	22	39	23	286		3ème
	4th	97	82	12	44	21	256		4ème
2012	1st	103	74	16	59	27	279	2012	1er
	2nd	85	88	6	51	13	243		2ème
	3rd	98	94	9	70	18	289		3ème
	4th	67	73	10	46	19	215		4ème
2013	1st	82	102	22	68	9	283	2013	1er
	2nd	95	158	18	55	40	366		2ème

Source: Rates and Tax Office, Department of Customs and Inland Revenue / Bureau de Patente, Service des Douanes et des Contributions Indirectes



**Table 10 Number of Provident Fund Contributing Members / Formal employment by sex**  
**Tableau 10 Nombre de membres de la caisse de prévoyance / Emploi par sexe**

Year	Quarter	Male		Female		Total	Année	Trimestre
		Masculin	%	Féminin	%			
2010		10,265	60	6,925	40	17,190	2010	
2011		10,362	60	6,998	40	17,360	2011	
2012		12,257	59	8,488	41	20,745	2012	
2010	1st	9,901	60	6,546	40	16,447	2010	1er
	2nd	9,856	60	6,692	40	16,548		2ème
	3rd	9,854	60	6,608	40	16,462		3ème
	4th	10,265	60	6,925	40	17,190		4ème
2011	1st	10,239	60	6,957	40	17,196	2011	1er
	2nd	9,724	59	6,730	41	16,454		2ème
	3rd	8,729	59	6,047	41	14,776		3ème
	4th	10,362	60	6,998	40	17,360		4ème
2012	1st	10,205	59	7,030	41	17,235	2012	1er
	2nd	9,535	59	6,591	41	16,126		2ème
	3rd	10,520	59	7,266	41	17,786		3ème
	4th	12,257	59	8,488	41	20,745		4ème
2013	1st	9,837	59	6,888	41	16,725	2013	1er
	2nd	10,599	59	7,481	41	18,080		2ème

Source : Vanuatu National Provident Fund (VNPF) / Caisse Nationale de Prévoyance du Vanuatu (CNPV)

(The fourth quarter of the year represents an updated annual figure)

## FOR MORE INFORMATION.....

*INTERNET*            [www.vnso.gov.vu](http://www.vnso.gov.vu) the Vanuatu National Statistics Office website is the best place to access to summary data from our quarterly publications.

### *REGULAR PUBLICATIONS*

*Annual*                      National Accounts of Vanuatu 2009  
Detailed Commodity Trade 2010  
Vanuatu Statistics Pocket Book 2010

*Quarterly*                      Quarterly Statistical Indicators, June Quarter of 2013  
Consumer Price Index, June Quarter of 2013

*Monthly*                      Tourism and Migration, June 2013  
Overseas Trade, June 2013

### *SPECIAL PUBLICATIONS*

2009 National Population and Housing Census –Gender Monograph “Women and Men in Vanuatu”  
2009 National Population and Housing Census – Basic Tables Report Volume 1  
2009 National Population and Housing Census – Analytical Report Volume 2  
2009 National Population and Housing Census – Youth Monograph  
Census of Agriculture 2007 (Thematic Studies in Fisheries and Forestry)  
Census of Agriculture 2007, Main Report  
Vanuatu Poverty Analysis Report, 2006 Household and Income Expenditure Survey  
Vanuatu 2006 Household and Income Expenditure Survey Main Report  
2004 Vanuatu Visitor Survey Report  
Vanuatu Statistical Year Book, 2002  
Annual Business Survey, 2001  
Vanuatu 2000 Labour Market Survey  
Informal Sector Survey 2000