

STATISTICS UPDATE: MERCHANDISE TRADE

JULY 2014 HIGHLIGHTS

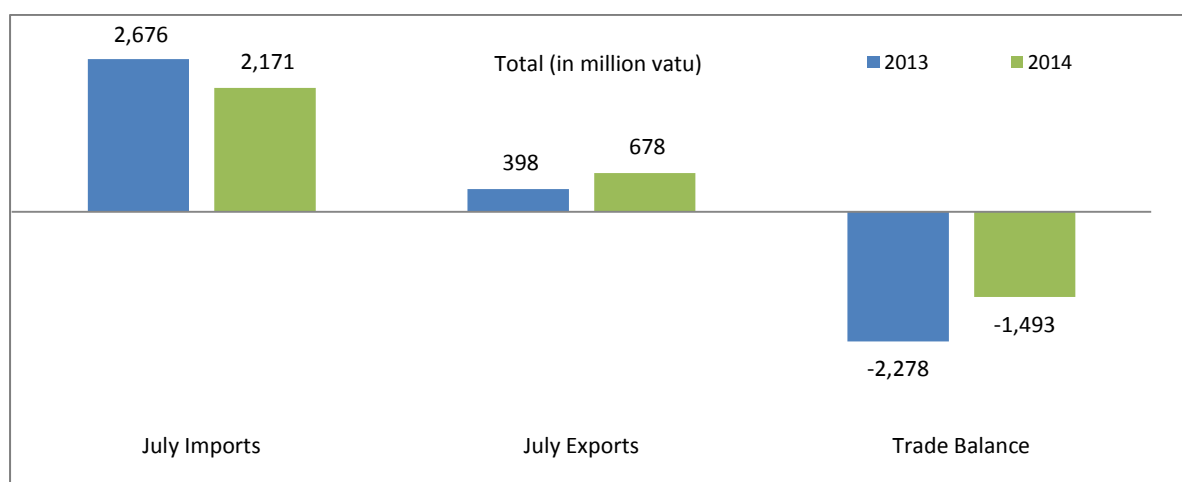


Figure 1: Terms of trade July 2014 and July 2013 (Million Vatu)

The provisional merchandise trade balance in July 2014 stood at VT1,493 million compared to July 2013 from VT2,278 million, registering a decrease of 34% or VT785 million. This improvement was attributable to a 19% or VT505 million decreases in total imports. Total imports decreased from VT 2,676 million in July 2013 to VT2,171 million in July 2014.

Domestic exports earnings (excluding re-exports) for July 2014 registered a significant increase by 70% over July 2013 from VT398 million to VT678 million. The increase was attributable to increases mainly in copra and coconut oil exports in the month of July 2014.

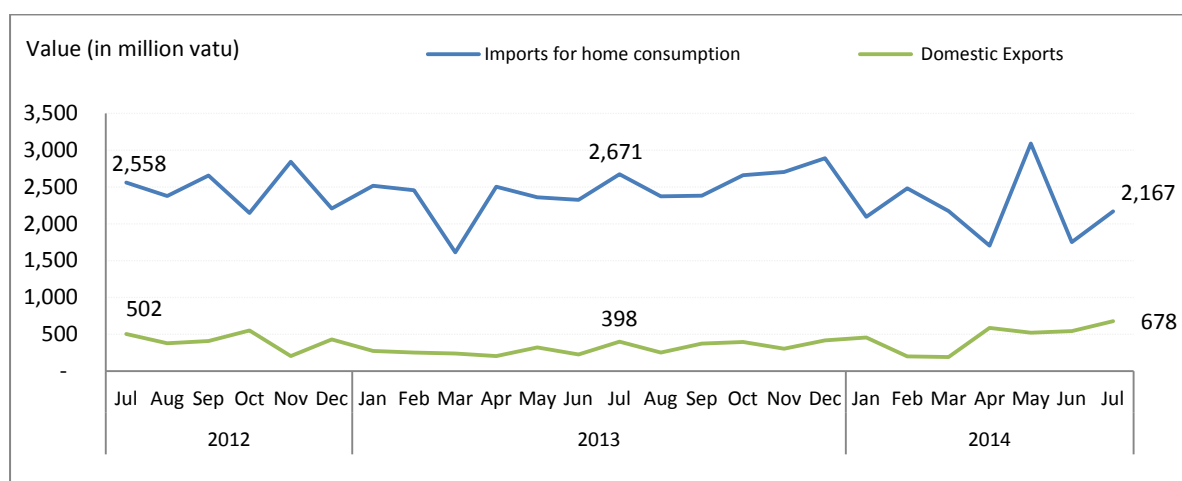


Figure 2: Overseas trade exports and imports for home consumption (million vatu)

EXPORTS

In July 2014, for the main export commodities, copra constituted the largest share in value at 44% followed by coconut oil 14%, kava and other products 11% each, cocoa 7%, beef 5%, shell 3%, sawn timber and coconut meal 2% each, while the rest of the export group made up less than 1% each. Other products comprised of Pharmaceuticals, Noni Juice, citrus fruits, tamanu oil, bean tree seeds, scrap and metals and personal effects. (See at tached Table 2, Table 3)

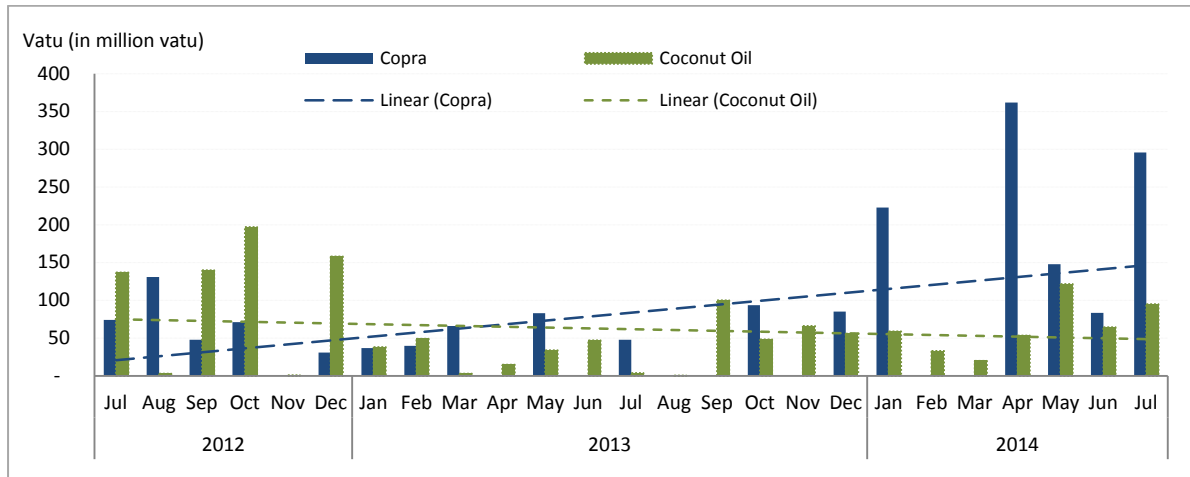


Figure 3: Exports of Coconut Products (million vatu)

Coconut products exports in July 2014 recorded significant increases as follows: copra exports, VT296 million, reflecting a huge increase of VT247 million compared to VT48 million in the same period of the previous year, followed by coconut oil exports by VT91 million compared to VT4 million in July 2013 to VT95 million in July 2014 and coconut meal exports, VT7 million compared to VT5 million in July 2013 to VT13 million in July 2014 respectively.

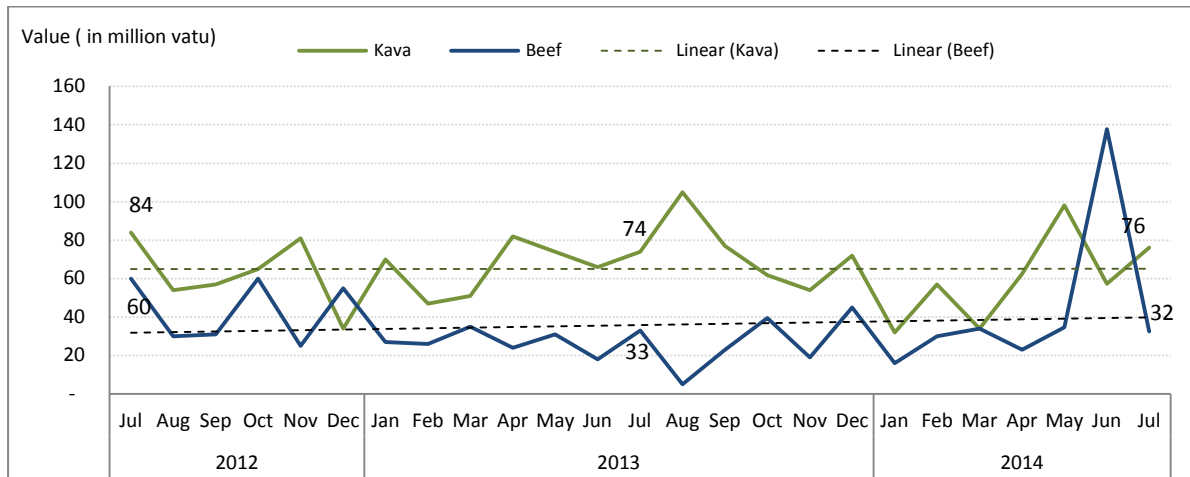


Figure 4: Exports of Kava and Beef Products (million vatu)

Kava exports stood at VT76 million in July 2014 compared to VT74 million in July 2013, a slight increase of VT2 million. However beef exports decreased slightly by 2% from VT33 million in July 2013 to VT32 million in July 2014. The bulk of kava exports were to New Caledonia, Fiji and United States of America, , while most of the beef exports were destined mainly to Japan, Papua New Guinea and the Solomon Islands.

IMPORTS

In terms of imports by commodity groups, Food and live animals registered the largest share in value (C.I.F) at VT631 million or 29% of the total imports for home consumption, followed by machines and transport equipment at 26% or VT557 million, basic manufactured goods and miscellaneous goods at 13% each, chemical products at 8% and other products such as, beverages and tobacco, crude materials, mineral fuels, goods not classified elsewhere and oils and fats made up less than 5% each of the total imports in July 2014 compared to the same period in 2013.

The commodity group which increased the most in July 2014 were oils and fats at 68% or VT4 million, followed by food and live animals 34%, crude materials 9%, and miscellaneous goods at 4% over July 2013. Meanwhile the rest of the commodity group decreased; were mineral fuels (-90%), chemical products (-24%), basic manufactured goods (-16%), machines and transport equipment (-15%), beverages and tobacco (-13%) and goods not classified elsewhere (-2%) respectively.

The distribution of imported goods by country grouping was stable over the same period of July 2013. Australia, Singapore and New Zealand were the main countries of origin of imports for home consumption in July 2013; However Australia and New Zealand remained stable while Singapore exhibited a few changes in position in July 2014 by a -94% decrease in imports for home consumption compared to July 2013.

REVISIONS TO IMPORTS AND EXPORTS STATISTICS

The Vanuatu National Statistics Office receives import and export statistics data on quantity and value from the Department of Customs and Inland Revenue's ASYCUDA merchandise trade processing system. On occasion revisions are made to import and export entries after publication. The Vanuatu National Statistics Office makes every possible effort to check the data and resolve inconsistencies and anomalies with colleagues from the Department of Customs and Inland Revenue prior to publishing. Where revisions are necessary these are highlighted in the statistical tables.

CONCEPTS AND DEFINITIONS

- **Imports for Home Consumption** are goods, materials or articles purchased in other countries and brought into Vanuatu and cleared through customs procedures for home consumption. Imports for home consumption are valued on a C.I.F. (cost, insurance, freight) basis. This means that for each commodity, the value recorded includes the factory price, the cost of packaging, the freight cost from overseas to Vanuatu ports and the insurance.
- **Exports** are expressed in F.O.B. (free on board) prices. It means the total value includes the production cost and the transport cost to the Vanuatu port of export.
- **Imports for re-export** refers to imports destined to be re-exported without having undergone any transformation, or only minor ones. This is especially the case of duty free goods and fuel "imported" into the country and sold to non-resident airline operators or ships.
- **Re-exports** are goods, materials or articles exported in the same condition as they were imported, and imported goods, which have undergone operations such as repair, repacking, or bottling which leave them essentially unchanged before exporting.

ATTACHED:

- Table 1: Summary of Merchandise trade
- Table 2: Principal domestic exports, value
- Table 3: Principal domestic exports, quantity
- Table 4: Imports cleared for home consumption, value

NEXT UPDATE (MONTHLY)

RELEASE DATE

August

15th October 2014

MORE INFORMATION

For statistical enquiries about this topic, please contact:

National Statistics Office: (678) 22110/22111 – email: stats@vanuatu.gov.vu

Website: <http://www.vnso.gov.vu>

NATIONAL STATISTICS OFFICES IN THE PROVINCES

Torba Province
Penama Province
Tafea Province

Sanma Province
Malampa Province



Simil Johnson
Government Statistician

Table 1 Summary of Overseas Trade
Tableau 1 Récapitulatif du commerce extérieur

In Million Vatu
En millions de Vatu

Year / Quarter	EXPORTS F.O.B / EXPORTATION FAB						IMPORTS C.I.F / IMPORTATIONS CAF						Année	Trimestre	
	Domestic Exports Exportation de produits locaux			Re-exports	Total Exports		Imports for Home Consumption / Importations destinées à la Consommation intérieure			Imports for Re- exports	Total Imports	Trade Balance			Balance Ratio
	Luganville	Port Vila	Total	Ré- exportations	Total des Exportations (E)	Luganville	Port Vila	Total	Importations pour ré- exportations	Total des Importations (I)	Déficit Commercial (E)-(I)	Taux de Couverture (E)/(I)			
2011	3,816	2,196	6,012	-	6,012	4,259	22,803	27,062	193	27,256	(21,243)	0.2	2011		
2012	3,305	1,768	5,072	-	5,072	4,075	22,832	26,907	547	27,454	(22,382)	0.2	2012		
2013	2,233	1,419	3,653	-	3,653	4,184	25,262	29,446	207	29,653	(26,000)	0.1	2013		
2012 1st	761	384	1,145	-	1,145	910	4,661	5,571	110	5,681	(4,536)	0.2	2012 1er		
2nd	937	513	1,451	-	1,451	942	5,610	6,553	110	6,663	(5,212)	0.2	2ème		
3rd	887	403	1,290	-	1,290	1,257	6,331	7,588	279	7,867	(6,577)	0.2	3ème		
4th	719	467	1,186	-	1,186	966	6,230	7,196	48	7,244	(6,057)	0.2	4ème		
2013 1st	476	287	764	-	764	1,056	5,531	6,587	35	6,622	(5,858)	0.1	2013 1er		
2nd	498	251	749	-	749	1,041	6,145	7,186	38	7,224	(6,475)	0.1	2ème		
3rd	597	425	1,022	-	1,022	1,014	6,408	7,422	58	7,480	(6,459)	0.1	3ème		
4th	663	455	1,118	-	1,118	1,073	7,178	8,251	75	8,327	(7,209)	0.1	4ème		
2014 1st	504	344	848	-	848	998	5,747	6,745	15	6,760	(5,911)	0.1	2014 1er		
2nd	1,341	311	1,652	-	1,652	986	5,558	6,544	32	6,577	(4,925)	0.3	2ème		
2013 Jan	177	98	276	-	276	365	2,153	2,518	16	2,534	(2,258)	0.1	2013 Jan		
Feb	158	93	251	-	251	456	2,001	2,457	5	2,461	(2,210)	0.1	Fév		
Mar	141	96	237	-	237	235	1,378	1,613	14	1,627	(1,390)	0.1	Mars		
Apr	89	115	204	-	204	336	2,167	2,503	11	2,514	(2,309)	0.1	Avr		
May	242	78	320	-	320	430	1,929	2,359	15	2,374	(2,054)	0.1	Mai		
Jun	167	58	225	-	225	276	2,049	2,325	12	2,337	(2,112)	0.1	Juin		
Jul	179	219	398	-	398	209	2,462	2,671	5	2,676	(2,278)	0.1	Juil		
Aug	171	79	250	-	250	382	1,989	2,371	33	2,404	(2,154)	0.1	Août		
Sep	247	127	373	-	373	424	1,956	2,380	21	2,401	(2,027)	0.2	Sep		
Oct	250	144	395	-	395	308	2,351	2,659	12	2,671	(2,276)	0.1	Oct		
Nov	145	161	306	-	306	345	2,358	2,702	52	2,754	(2,448)	0.1	Nov		
Dec	267	150	417	-	417	421	2,470	2,890	12	2,902	(2,485)	0.1	Déc		
2014 Jan	337	121	458	-	458	225	1,868	2,093	0	2,093	(1,635)	0.2	2014 Jan		
Feb	94	105	199	-	199	495	1,984	2,480	6	2,485	(2,286)	0.1	Feb		
Mar	73	118	191	-	191	277	1,895	2,172	9	2,181	(1,990)	0.1	Mars		
Apr	488	98	586	-	586	429	1,273	1,703	7	1,710	(1,125)	0.3	Avr		
May	420	102	522	-	522	306	2,785	3,090	24	3,115	(2,593)	0.2	Mai		
Jun	433	111	544	-	544	251	1,500	1,751	1	1,752	(1,208)	0.3	Juin		
Jul	544	134	678	-	678	337	1,830	2,167	3	2,171	(1,493)	0.3	Juil		

Source: Department of Customs and Inland Revenue / Service des Douanes et Contributions Indirectes

Table 2 Principal Domestic Exports, in Value
Tableau 2 Principales exportations de produits locaux, en valeur

In million Vatu
En millions de Vatu

Year Quarter	Copra	Coconut oil	Beef veal	Cocoa	Shell	Sawn Timber	Cowhides	Kava	Coffee	Vanilla	Coconut Meal	Live Fish	Alcoholic Drink	Fish	Other products	Total	Année Trimestre
	Coprah	Huile de coco	Viande bovine	Cacao	Coquillages	Bois débité	Cuirs et peaux		Café	Vanille	Farine de coprah	Poisson vivant	Boissons Alcoolisées	Poisson	Autres produits		
2011	1,065	1,592	516	247	30	65	29	762	18	5	87	166	175	359	898	6,012	2011
2012	1,087	1,162	518	258	27	42	27	661	3	11	92	136	161	185	702	5,072	2012
2013	452	459	326	294	30	165	28	834	6	7	143	88	116	139	566	3,653	2013
2012 1st	434	208	123	10	0	8	7	97	0	3	14	48	30	29	133	1,145	2012 1er
2nd	298	317	135	70	1	20	7	189	0	5	26	56	21	69	237	1,451	2ème
3rd	253	280	120	97	14	5	6	195	2	1	28	17	60	74	138	1,290	3ème
4th	102	356	140	81	12	8	7	179	0	2	23	16	51	13	194	1,186	4ème
2013 1st	143	90	89	23	6	15	8	168	3	2	25	20	36	55	83	764	2013 1er
2nd	83	95	73	98	8	10	4	223	1	1	17	25	21	33	57	749	2ème
3rd	48	103	61	123	7	47	10	255	1	1	62	20	29	33	221	1,022	3ème
4th	179	170	104	51	9	92	5	188	1	3	40	22	30	19	206	1,118	4ème
2014 1st	223	112	80	9	19	4	5	124	1	1	15	61	17	8	168	848	2014 1er
2nd	593	240	195	155	0	22	8	218	2	1	28	27	3	1	159	1,652	2ème
2013 Jan	37	38	27	18	-	6	3	70	3	-	7	4	11	26	25	276	2013 Jan
Feb	40	49	26	2	6	2	2	47	0	1	10	10	19	5	31	251	Fév
Mar	66	3	35	3	-	6	3	51	-	1	8	6	6	23	27	237	Mars
Apr	-	15	24	13	-	6	2	82	0	-	6	13	7	7	29	204	Avr
May	83	34	31	31	8	4	-	74	1	1	12	5	7	16	13	320	Mai
Jun	-	47	18	54	-	-	2	66	-	0	-	7	8	9	14	225	Juin
Jul	48	4	33	47	7	1	5	74	-	0	5	6	7	29	131	398	Juil
Aug	-	0	5	41	-	2	1	105	1	1	33	7	8	2	47	251	Août
Sep	-	100	23	35	-	44	4	77	-	0	24	8	14	3	43	373	Sep
Oct	93	48	39	18	9	21	1	62	-	1	13	5	9	2	73	395	Oct
Nov	-	66	19	2	0	23	2	54	1	1	12	7	12	10	96	306	Nov
Dec	85	56	45	30	-	48	2	72	1	0	15	10	10	7	37	417	Déc
2014 Jan	223	59	16	6	-	1	3	32	-	1	7	40	17	4	48	458	2014 Jan
Feb	-	33	30	3	19	0	2	57	-	-	2	10	-	1	41	199	Fev
Mar	-	20	34	-	-	3	-	34	1	0	6	10	-	3	79	191	Mars
Apr	362	53	23	5	-	10	3	63	-	0	8	9	-	1	49	586	Avril
May	148	122	35	44	0	7	2	98	0	0	9	8	-	-	49	522	Mai
Jun	83	65	138	105	-	6	2	57	1	1	11	10	3	-	61	544	Juin
Jul	296	95	32	48	18	15	1	76	1	-	13	10	-	-	74	678	Juil

Source: Department of Customs and Inland Revenue / Service des Douanes et Contributions Indirectes (r) revised other products data

Table 3 Principal Domestic Exports, in Quantity
Tableau 3 Principales exportations, en quantité

In tonnes
En tonnes

Year / Quarter	Copra Coprah	Coconut oil Huile de coco	Beef veal Viande bovine	Cocoa Cacao	Shell Coquillages	Cowhides Cuirs et peaux	Kava	Coffee Café	Vanilla Vanille	Coconut Meal Farine de coprah	Live Fish Poisson vivant	Fish Poisson	Année Trimestre
2011	13,596	12,000	1,105	1,068	10	336	734	27	1	6,917	205	2,743	2011
2012	16,336	10,011	1,031	1,415	9	387	643	3	3	6,082	134	682	2012
2013	12,508	5,535	703	1,649	10	402	819	6	2	7,692	77	391	2013
2012 1st	6,188	1,674	236	40	0	80	99	1	1	1,079	39	213	2012 1er
2nd	4,588	2,696	284	381	0	83	184	0	2	1,628	56	196	2ème
3rd	3,791	2,423	240	539	4	105	187	2	0	1,708	18	230	3ème
4th	1,769	3,218	271	454	4	119	173	0	1	1,667	21	43	4ème
2013 1st	4,022	838	205	136	2	114	158	3	1	1,660	13	150	2013 1er
2nd	2,438	1,529	142	491	3	72	223	1	0	1,162	21	84	2ème
3rd	1,326	1,016	129	724	2	120	252	1	0	2,966	25	105	3ème
4th	4,722	2,152	227	298	3	96	186	1	1	1,904	18	52	4ème
2014 1st	4,123	1,524	183	49	5	61	119	1	0	515	54	25	2014 1er
2nd	9,102	2,523 #	472	671	16	92	248	2	0	1,469	17	2	2ème
2013 Jan	1,274	350	50	113	-	44	68	3	-	491	3	100	2013 Jan
Feb	1,193	486	69	9	2	29	44	0	0	709	6	14	Fév
Mar	1,555	1	86	14	-	41	46	-	0	459	4	36	Mars
Apr	-	279	45	80	-	41	82	0	-	358	10	19	Avr
May	2,438	260	55	187	3	-	75	1	0	804	6	31	Mai
Jun	-	990	42	224	-	31	66	-	-	-	4	34	Juin
Jul	1,326	28	72	252	2	62	73	-	0	322	4	92	Juil
Aug	-	4	15	226	-	18	104	1	0	1,368	6	6	Août
Sep	-	984	42	246	-	41	75	-	0	1,276	14	7	Sep
Oct	2,542	481	86	115	3	19	62	-	0	573	6	9	Oct
Nov	-	671	47	17	0	39	54	1	0	633	6	24	Nov
Dec	2,180	1,000	94	167	-	37	70	1	0	698	7	20	Déc
2014 Jan	4,123	837	42	33	-	40	36	-	0	117	39	10	2014 Jan
Feb	-	536	68	16	5	21	55	-	-	123	9	5	Fév
Mar	-	151	73	-	-	-	28	1	0	275	7	10	Mars
Apr	5,551	851	52	28	-	49	61	-	0	419	6	2	Avril
May	2,273	697	85	187	16	21	96	0	0	487	6	-	Mai
Jun	1,278	976	335	456	-	22	92	2	0	563	5	-	Juin
Jul	4,770	841	72	210	6	18	72	1	-	369	6	-	Juil

Source: Department of Customs and Inland Revenue / Service des Douanes et Contributions Indirectes

Table 4 Imports Cleared for Home Consumption, in Value

Tableau 4 Importations destinées à la consommation intérieure par produit selon la Classification type pour le commerce international, en valeur

**In million Vatu
En million de Vatu**

Year	Quarter	Food & Live Animals	Beverages & Tobacco	Crude Materials Except Fuels	Mineral Fuels	Oils, Fats & Waxes	Chemical Products	Basic Manufactured Products	Machines & Transport Equipment	Miscellaneous Manufactured Goods	Goods N.E.C.	Total	Année	Trimestre
		Produits alimentaires et animaux vivants	Boissons et tabacs	Matières brutes non combustibles	Energie fossile	Huiles et graisses animales et végétales	Produits chimiques	Produits manufacturés	Machines et matériels de transports	Produits manufacturés divers	Articles et transactions, N.C.A			
2011		5,537	1,038	379	4,835	129	2,855	3,566	5,542	2,820	362	27,062	2011	
2012		5,307	1,153	432	4,621	141	2,809	3,590	5,964	2,575	314	26,907	2012	
2013		6,068	1,146	510	4,599	124	2,685	3,950	6,881	3,165	319	29,446	2013	
2012	1st	1,103	303	79	855	41	630	736	1,243	494	86	5,571	2012	1er
	2nd	1,059	225	90	1,442	20	647	804	1,585	607	74	6,553		2ème
	3rd	1,552	257	128	1,471	44	675	1,087	1,615	684	75	7,588		3ème
	4th	1,594	367	136	853	36	858	962	1,521	791	79	7,196		4ème
2013	1st	1,394	236	88	1,204	24	548	1,006	1,332	657	100	6,587	2013	1er
	2nd	1,349	315	154	1,503	29	689	879	1,457	731	80	7,186		2ème
	3rd	1,459	293	126	1,210	24	703	1,039	1,745	751	74	7,422		3ème
	4th	1,867	302	142	683	47	745	1,027	2,347	1,026	65	8,251		4ème
2014	1st	1,065	264	81	1,666	15	565	895	1,499	618	76	6,745	2014	1er
	2nd	1,327	204	94	1,301	25	505	686	1,642	718	41	6,544		2ème
2013	Jan	601	71	35	401	10	201	350	568	260	20	2,518	2013	Jan
	Feb	474	67	31	783	7	189	339	329	175	63	2,456		Fev
	Mar	319	98	22	20	7	158	316	435	221	17	1,613		Mars
	Apr	525	129	57	711	12	231	246	370	202	20	2,503		Avril
	May	396	84	46	256	11	252	355	634	304	21	2,359		Mai
	Jun	428	102	51	537	6	206	278	453	225	39	2,325		Juin
	Jul	470	87	56	522	6	225	339	654	277	33	2,671		Juil
	Aug	623	99	29	64	9	263	400	611	262	12	2,371		Août
	Sep	366	106	40	624	9	215	300	479	212	29	2,380		Sep
	Oct	542	63	49	201	20	280	353	770	361	20	2,659		Oct
	Nov	608	106	53	441	14	248	276	646	283	28	2,702		Nov
	Dec	717	133	41	40	14	218	398	931	382	16	2,890		Dec
2014	Jan	363	69	21	513	4	173	320	420	200	11	2,093	2014	Jan
	Feb	326	88	21	750	7	210	291	587	182	18	2,480		Fev
	Mar	376	108	39	403	4	183	284	492	236	48	2,172		Mars
	Apr	336	67	41	225	9	144	173	467	233	9	1,703		Avril
	May	544	75	30	1,033	9	198	264	649	271	17	3,090		Mai
	Jun	447	62	23	43	7	163	248	527	214	16	1,752		Juin
	Jul	631	77	61	55	10	172	283	557	289	33	2,167		Juil

Source: Department of Customs and Inland Revenue / Service des Douanes et Contributions Indirectes