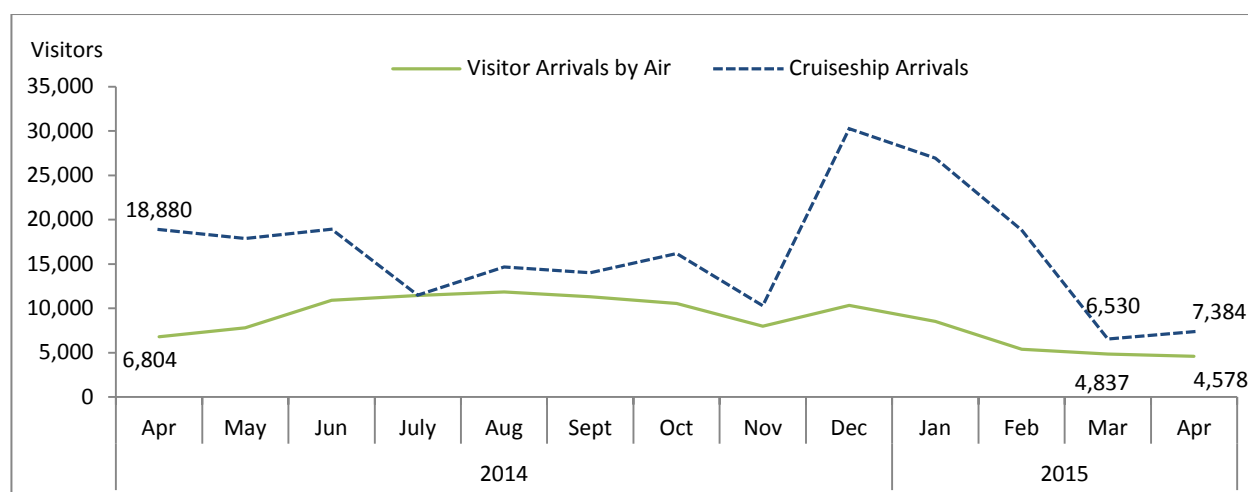


STATISTICS UPDATE: INTERNATIONAL ARRIVAL STATISTICS

APRIL 2015 HIGHLIGHTS

OVERVIEW

Figure 1: International Visitor Arrivals: April 2014 to April 2015



- The international visitor arrivals by air in April 2015 accounted for 38% of total international visitors to Vanuatu. Visitor arrivals by air decreased by 33% over April 2014, also falling by 5% over March 2015.
- In April 2015, visitor arrivals by air stood at 4,578 visitors, a decline of 33% over the corresponding month in 2014, also falling by 5% over the previous month. The decline was reflected in the fall of visitors arriving for holiday purposes.
- At least 1 out of 4 (25%) visitors by air visited outer islands in April 2015
- In April 2015, cruise ship or day visitors made up 62% of total international visitors to Vanuatu. Day visitors stood at 7,384, a decline of 61% over April 2014, also falling by 13% over March 2015. The decline was attributed by the decline in cruise ship visits from 9 in April 2014 to 4 in April 2015.

CONTENTS

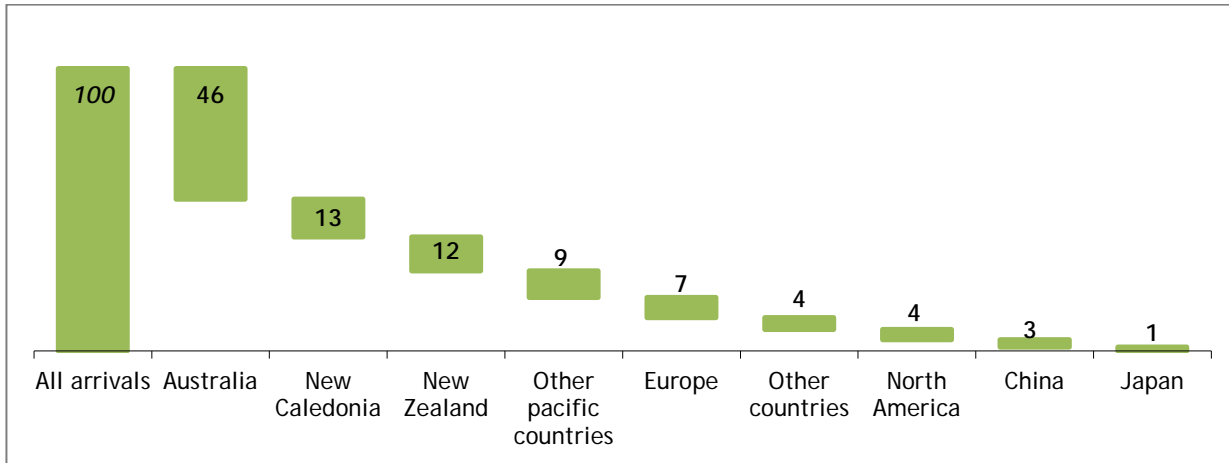
	Page #
HIGHLIGHTS	1-4
ANNEX 1-2	5
TABLES:	
1: Summary of Overseas migration	6
2: Visitors by Purpose of Visit	7
3: Visitors by Country of Usual Residence	8
4: Resident arrivals by Nationality	9
5: Visitors by air, Intended length of stay	10
6: Visitors by air, Average age	11
7: Visitors to Outer islands	12

PURPOSE OF VISIT FOR VISITORS ARRIVING BY AIR

- In April 2015, visitors arriving by air for holiday purposes made up 50% alone. Visitors arriving for other purposes, education or sports at 20%, followed by visitors arriving for business, meetings or conferences at 16%, visitors arriving to visit friends and relatives at 15%, while visitors on transit make up less than 1%.

COUNTRY OF USUAL RESIDENCE FOR VISITORS ARRIVING BY AIR

Fig 2: Percentage share of visitors in April 2015 by Country of Usual Residence

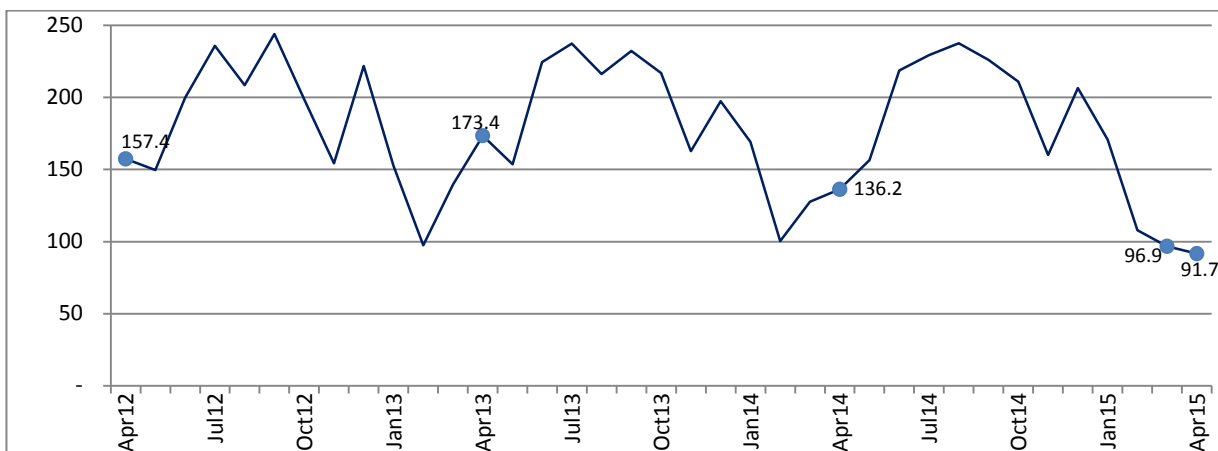


- Australian visitors continue to dominate visitor arrivals by resident country at 46%, New Caledonian visitors at 13%, New Zealand visitors at 12%, visitors from other pacific countries at 9%, European visitors at 7%, other countries and North America at 4% respectively, China visitors at 3% and Japan at 1%.

VISITOR ARRIVAL INDEX¹

Figure 3 shows the total number of visitor arrivals and arrivals from Australia, New Zealand, New Caledonia and all other countries combined to show trends in arrivals, with the number of visitors

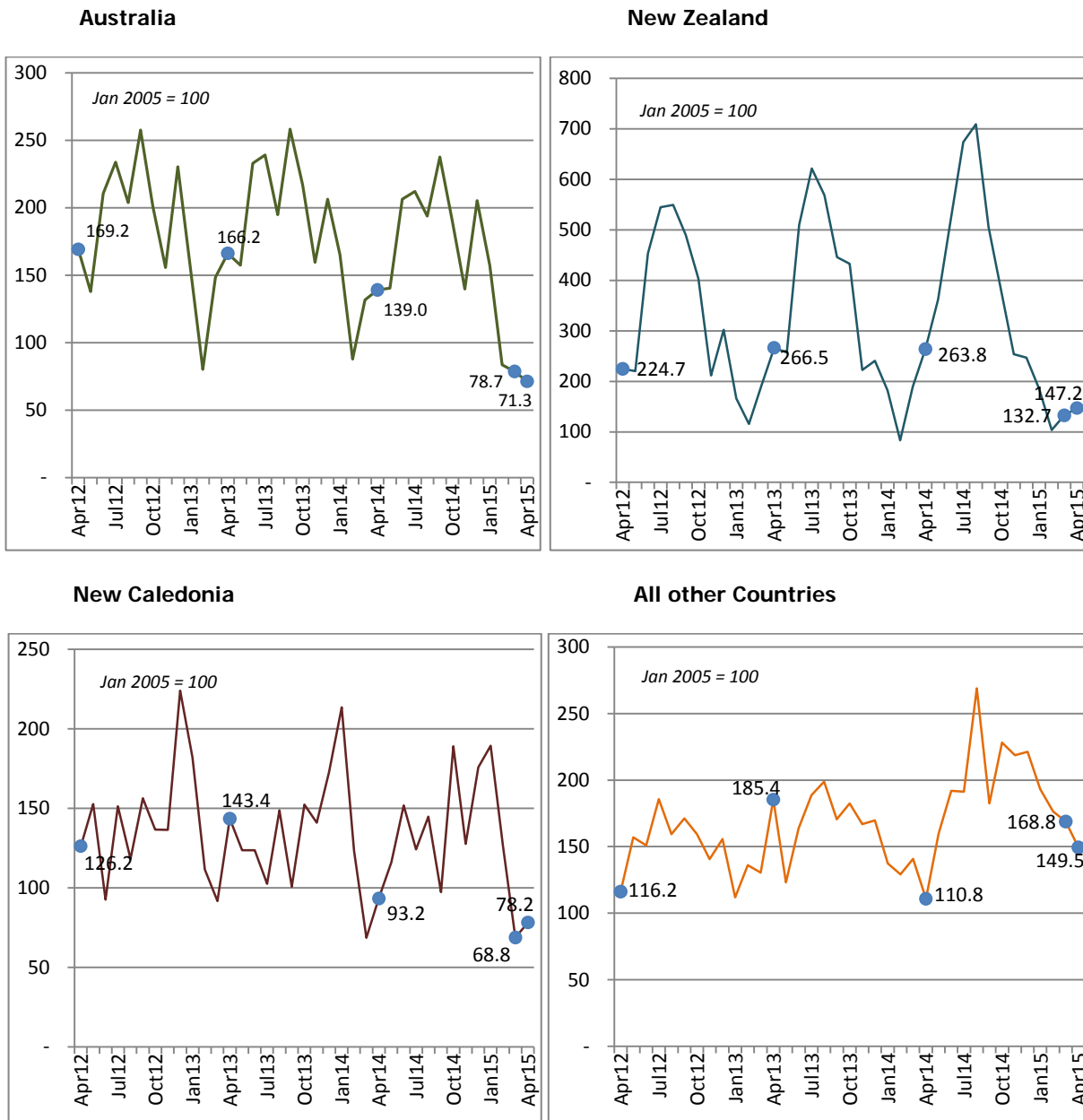
Fig 3: Index of Total Air Visitor Arrivals, April 2012 to April 2015 (January 2005 = 100)



¹ Tourism in Vanuatu is seasonal, and it is difficult to analyse changes in international arrivals and country of residence by looking at the monthly number of arrivals based on an index value of 100 in January 2005. This index allows analysis over time of the real increases and decreases in international air arrivals.

- Index values for visitor arrivals in April 2015 declined by (-33%) over April 2014. (Fig. 3)

Figure 4: Index of Visitor Arrivals and Country of Usual Residence, April 2012 to April 2015 (January 2005 = 100)



Note: the vertical axis scale varies in each country chart.

- The three main tourism markets of Australia, New Zealand decreased by (-49%), (-44%) and (-16%) in index values respectively over April 2014.

AVERAGE INTENDED LENGTH OF STAY FOR VISITORS ARRIVING BY AIR

- In April 2015, visitors arriving by air spent an average of 11 days, an increase of 1 day over April 2014, however falling by 3 days over the previous month.

AVERAGE AGE FOR VISITORS ARRIVING BY AIR

- In April 2015, the average age of visitors by air stood at 40 years, an increase of 1 year over April 2014, however remaining unchanged over the previous month.

DATA SOURCE

All International arrival statistics by air provided in the report is sourced from completed Arrival and Departure cards at the Department of Immigration. Cruise ship figures are also sourced from the Department of Immigration.

NEXT UPDATE (MONTHLY)

RELEASE DATE

May 2015

17th July 2015

PROVINCIAL STATISTICS OFFICES

PO Box 22
Lakatoro, Malekula
MALAMPA PROVINCE

Commercial Center
Lenakel, Tanna
TAFEA PROVINCE

PO Box 8
Saratamata, Ambae
PENAMA PROVINCE

Sola, Vanua Lava
Banks group
TORBA PROVINCE

Millennium Building
Luganville, Santo
SANMA PROVINCE



Benuel Lenge

Acting Government Statistician



SUMMARY OF VISITORS TO OUTER ISLANDS² (SEE TABLE 7)

Summary of Indicators

- In April 2015, at least 1 out of 3 or 33% of visitors by air travelling to outer islands visited Tafea Province alone.
- In April 2015, Visitors travelling to outer islands spent an average of 4 days.

Figure 1: Summary of visitors to other province, May 2014 to April 2015

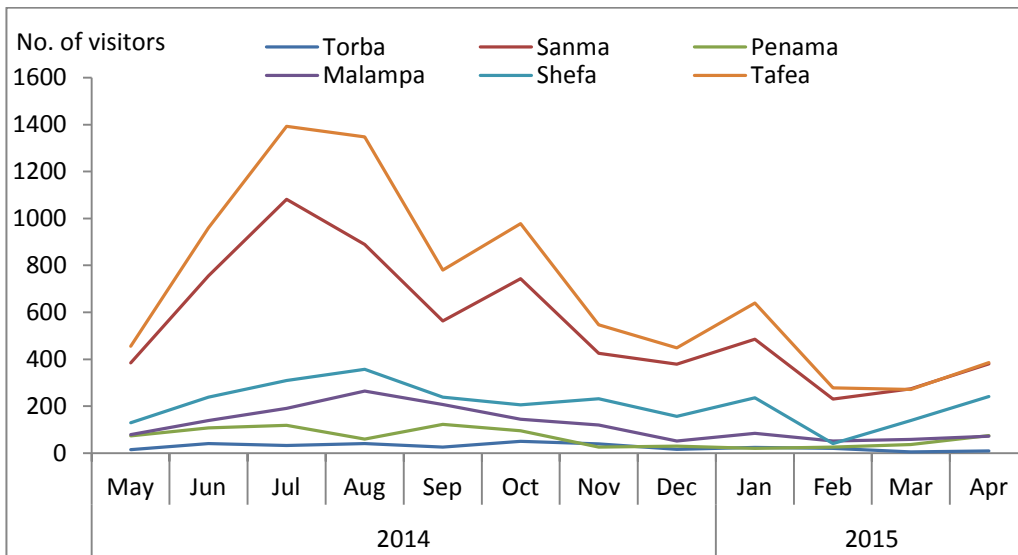
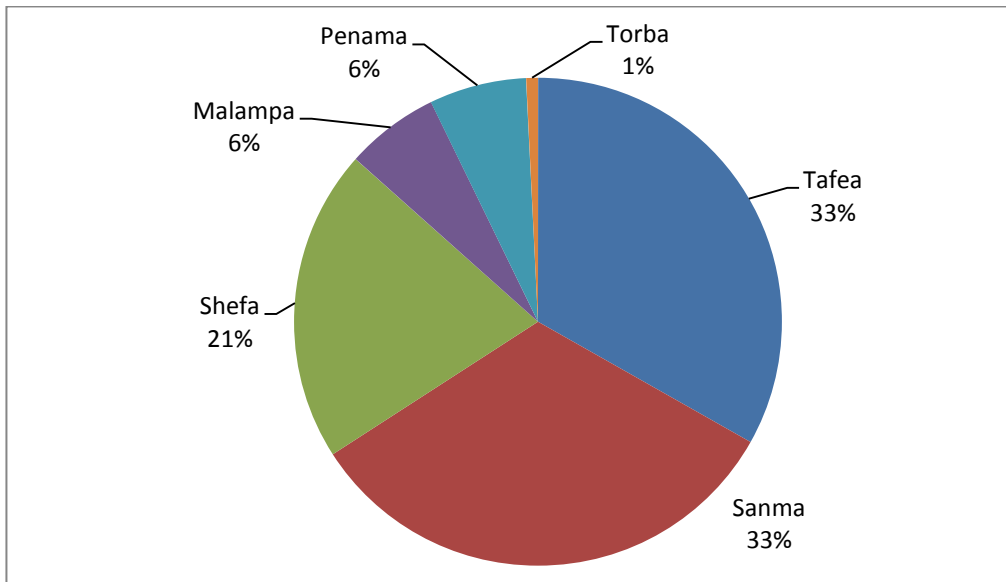


Figure 2: Proportion of visitors to other provinces, April 2015



*Excludes Efate island

² Data on visitors travelling to outer islands is only available from May 2014

ANNEX 1 – NUMBER OF VISITORS TO OUTER ISLANDS

Table 1: Visitors to outer islands, by province

Year	Month	Province						TOTAL
		Torba	Sanma	Penama	Malampa	Shefa*	Tafea	
2014	May	14	384	73	79	129	456	1,135
	Jun	40	756	108	139	238	961	2,242
	Jul	33	1,082	118	191	309	1,393	3,126
	Aug	40	890	59	265	357	1,348	2,959
	Sep	26	563	123	207	239	780	1,938
	Oct	50	744	95	144	205	978	2,216
	Nov	39	426	26	119	232	547	1,389
	Dec	16	379	29	51	156	449	1,080
2015	Jan	24	485	20	84	235	640	1,488
	Feb	20	230	26	52	40	278	646
	Mar	5	274	36	58	139	271	783
	Apr	9	380	75	72	241	386	1,163

Source: Department of Immigration

*Excludes Efate Island

ANNEX 2 – AVERAGE LENGTH OF STAY FOR VISITORS TO OUTER ISLANDS

Table 2: The average length of stay for visitors travelling to outer islands, by province

Year	Month	Province						TOTAL
		Torba	Sanma	Penama	Malampa	Shefa*	Tafea	
2014	May	4.6	5.4	4.3	5.8	1.5	2.8	4.1
	Jun	5.6	5.4	4.0	5.6	2.0	2.5	4.2
	Jul	5.9	5.9	9.8	4.8	1.5	3.7	5.3
	Aug	4.7	5.9	7.5	6.1	2.2	2.5	4.8
	Sep	3.7	7.0	5.0	4.7	3.6	3.1	4.5
	Oct	4.6	5.5	5.1	5.0	3.7	2.8	4.5
	Nov	7.7	6.2	5.1	5.6	2.3	3.3	5.0
	Dec	5.4	6.8	13.6	9.7	1.7	3.4	6.8
2015	Jan	6.8	5.9	5.5	8.6	2.6	2.9	5.4
	Feb	7.3	5.3	7.4	7.5	3.4	2.8	5.6
	Mar	22.4	5.7	27.2	5.8	8.2	3.2	12.1
	Apr	4.0	5.5	2.1	6.8	2.8	5.1	4.2

Source: Department of Immigration

*Excludes Efate Island

Table 1 : Summary of Overseas Migration
Tableau 1 : Résumé des échanges migratoires avec l'extérieur

Year	Month	ARRIVALS / ARRIVEES						DEPARTURES / DEPARTURES						Cruiseship Arrivals/ Croisiéristes	Année Mois	
		PORT VILA		LUGANVILLE		TOTAL		PORT VILA		LUGANVILLE		TOTAL				
		Residents Résidents	Visitors Visiteurs	Residents Résidents	Visitors Visiteurs	Residents Résidents	Visitors Visiteurs	Resident Résidents	Visitor Visiteurs	Resident Résidents	Visitors Visiteurs	Resident Résidents	Visitors Visiteurs			
2011		21,752	91,107	521	2,853	22,273	93,960	12,958	96,836	156	1,954	13,114	98,790	154,938	2011	
2012		22,594	105,611	364	2,550	22,958	108,161	14,803	113,158	134	2,339	14,937	115,497	213,243	2012	
2013		25,116	106,466	495	3,643	25,611	110,109	16,380	118,753	164	3,496	16,544	122,249	247,296	2013	
2014		25,268	104,471	616	4,337	25,884	108,808	18,705	117,236	375	3,531	19,080	120,767	220,205	2014	
2011	Apr	1,635	7,183	44	236	1,679	7,419	899	7,722	12	141	911	7,863	15,725	2011	Apr
2012	Apr	1,793	7,637	49	223	1,842	7,860	998	8,888	4	204	1,002	9,092	15,177	2012	Avr
2013	Apr	2,033	8,182	50	480	2,083	8,662	1,119	9,347	18	399	1,137	9,746	22,314	2013	Avr
	May	2,222	7,327	52	343	2,274	7,670	1,337	8,232	21	302	1,358	8,534	16,817		Mai
	June	2,250	10,806	45	400	2,295	11,206	1,160	10,307	11	427	1,171	10,734	27,524		Juin
	July	2,073	11,390	44	465	2,117	11,855	1,057	12,901	9	412	1,066	13,313	16,759		Juil
	Aug	1,769	10,682	8	115	1,777	10,797	1,265	11,793	2	142	1,267	11,935	13,642		Aoû
	Sep	2,823	11,340	26	256	2,849	11,596	1,073	11,442	20	284	1,093	11,726	15,370		Sep
	Oct	1,739	10,392	34	435	1,773	10,827	928	12,254	10	455	938	12,709	26,805		Oct
	Nov	2,539	7,825	43	298	2,582	8,123	2,070	9,887	17	229	2,087	10,116	19,834		Nov
	Dec	2,682	9,473	68	380	2,750	9,853	1,656	8,720	17	229	1,673	8,949	22,553		Dec
2014	Jan	2,303	8,288	25	159	2,328	8,447	1,393	11,871	10	252	1,403	12,123	23,016	2014	Jan
	Feb	1,491	4,878	49	131	1,540	5,009	2,051	5,763	7	85	2,058	5,848	25,728		Fév
	Mar	1,693	6,169	66	207	1,759	6,376	1,149	7,047	7	208	1,156	7,255	18,883		Mar
	Apr*	1,753	6,433	76	371	1,829	6,804	3,172	7,089	5	351	3,177	7,440	18,880		Avr
	May	2,293	7,483	30	329	2,323	7,812	1,360	8,231	59	218	1,419	8,449	17,869		Mai
	June	2,154	10,481	38	436	2,192	10,917	967	9,984	32	355	999	10,339	18,911		Juin
	July	2,030	10,944	56	502	2,086	11,446	1,339	12,891	67	341	1,406	13,232	11,470		Juil
	Aug	2,208	11,515	38	350	2,246	11,865	1,311	12,517	81	219	1,392	12,736	14,667		Aoû
	Sep	2,509	10,731	59	557	2,568	11,288	879	10,956	59	557	938	11,513	14,007		Sep
	Oct	1,750	10,017	56	516	1,806	10,533	1,624	12,394	30	426	1,654	12,820	16,195		Oct
	Nov	2,534	7,584	65	412	2,599	7,996	2,068	9,532	14	300	2,082	9,832	10,312		Nov
	Dec	2,550	9,948	58	367	2,608	10,315	1,392	8,961	4	219	1,396	9,180	30,267		Dec
2015	Jan	2,396	8,219	37	305	2,433	8,524	1,547	12,350	53	342	1,600	12,692	26,923	2015	Jan
	Feb	1,575	5,176	9	213	1,584	5,389	2,019	5,978	12	118	2,031	6,096	18,803		Fév
	Mar	1,905	4,527	28	310	1,933	4,837	1,288	5,599	9	153	1,297	5,752	6,530 ^r		Mar
	Apr	2,219	4,263	5	315	2,224	4,578	1,463	5,183	11	221	1,474	5,404	7,384		Avr

Source: Immigration Department/Service de l'Immigration

- Nil or less than half final unit shown / Résultat nul ou inférieur au demi de l'unité indiquée

* there are missing batches with an estimated total of 457 visitors missing, April figures will be revised once the missing flight batches are located.

^r revised

Table 2 : Visitor Arrivals by Purpose of Visit
Tableau 2 : Arrivées de visiteurs selon le motif du voyage

Year	Month	VISITORS/VISITEURS						Total Visitors	Année	Mois
		Holidays	Visiting Friends and relatives	Business, Meetings/ Conferences	Stop Over	Others, Education, sports				
		Vacances	Visite à des amis et à la famille	Affaires, réunions ou conférence	Escale	Autres, education, sport	Visiteurs global			
2011		75,821	7,320	9,933	790	96	93,960	2011		
2012		88,085	7,910	11,294	602	270	108,161	2012		
2013		89,253	7,755	9,079	613	3,409	110,109	2013		
2014		86,239	7,672	8,007	1,022	5,868	108,808	2014		
2011	Apr	6,082	527	742	68	-	7,419	2011	Avr	
2012	Apr	6,596	546	674	29	15	7,860	2012	Avr	
2013	Apr	6,874	558	937	28	265	8,662	2013	Avr	
	May	6,029	565	800	33	243	7,670		Mai	
	June	9,152	723	775	62	494	11,206		Juin	
	July	9,819	853	582	89	512	11,855		Juil	
	Aug	8,678	767	1,001	59	292	10,797		Aoû	
	Sep	9,814	567	847	70	298	11,596		Sep	
	Oct	8,806	705	849	82	385	10,827		Oct	
	Nov	6,389	566	757	36	375	8,123		Nov	
	Dec	8,389	824	392	18	230	9,853		Dec	
2014	Jan	7,317	544	335	63	188	8,447	2014	Jan	
	Feb	3,773	407	462	47	320	5,009		Fév	
	Mar	4,906	406	628	35	401	6,376		Mar	
	Apr*	5,593	406	640	11	154	6,804		Avr	
	May	6,213	534	776	22	267	7,812		Mai	
	June	8,865	744	880	52	376	10,917		Juin	
	July	9,423	830	578	121	494	11,446		Juil	
	Aug	9,321	743	882	214	705	11,865		Aoû	
	Sep	8,904	699	807	147	731	11,288		Sep	
	Oct	8,042	685	851	145	810	10,533		Oct	
	Nov	5,816	564	780	162	674	7,996		Nov	
	Dec	8,066	1,110	388	3	748	10,315		Dec	
2015	Jan	6,846	524	377	11	766	8,524	2015	Jan	
	Feb	3,702	461	556	21	649	5,389		Fév	
	Mar	1,899	689	988	2	1,259	4,837		Mar	
	Apr	2,281	670	709	13	905	4,578		Avr	

Source: Immigration Department/Service de l'Immigration

- Nil or less than half final unit shown / résultat nul ou inférieur au demi de l'unité indiquée

* there are missing batches with an estimated total of 457 visitors missing, April figures will be revised once the missing flight batches are located.

Table 3 : Visitor Arrivals by Usual Country of Residence
Tableau 3 : Arrivées des visiteurs par pays de résidence habituelle

Year	Month	Australia	New Zealand	New Caledonia	Other Pacific Countries	Europe	North America	Japan	China	Other Countries	TOTAL	Année	Mois
		Australie	Nouvelle-Zélande	Nouvelle-Calédonie	Autres Pays du Pacifique		Amérique du Nord	Japon	Chine	Autres pays			
2011		57,843	11,399	11,376	3,397	5,265	1,922	630	581	1,547	93,960	2011	
2012		65,405	14,430	13,138	4,313	5,491	2,094	705	623	1,962	108,161	2012	
2013		65,776	15,068	12,515	4,874	5,544	2,614	659	1,062	1,997	110,109	2013	
2014		60,808	16,293	12,756	6,630	5,591	2,373	763	1,563	2,031	108,808	2014	
2011	Apr	4,939	657	811	278	390	170	39	22	113	7,419	2011	Avr
2012	Apr	5,021	838	991	270	335	133	58	40	174	7,860	2012	Avr
2013	Apr	4,931	994	1,126	522	533	222	58	77	199	8,662	2013	Avr
	May	4,669	959	971	293	374	165	62	62	115	7,670		Mai
	June	6,911	1,901	971	461	419	279	39	81	144	11,206		Juin
	July	7,091	2,319	805	384	654	217	47	92	246	11,855		Juil
	Aug	5,781	2,121	1,167	444	672	245	88	108	171	10,797		Aoû
	Sep	7,660	1,664	790	458	399	269	67	72	217	11,596		Sep
	Oct	6,431	1,614	1,196	418	523	311	65	94	175	10,827		Oct
	Nov	4,735	830	1,107	413	448	239	86	137	128	8,123		Nov
	Dec	6,123	898	1,358	466	430	243	53	97	185	9,853		Dec
2014	Jan	4,898	679	1,676	284	414	188	42	124	142	8,447	2014	Jan
	Feb	2,608	310	968	357	304	207	33	101	121	5,009		Fév
	Mar	3,907	707	538	462	360	146	48	94	114	6,376		Mar
	Apr*	4,125	984	732	265	368	108	21	123	78	6,804		Avr
	May	4,162	1,350	911	369	404	215	72	110	219	7,812		Mai
	June	6,123	1,936	1,191	411	453	306	82	228	187	10,917		Juin
	July	6,295	2,513	975	526	544	198	61	126	208	11,446		Juil
	Aug	5,747	2,645	1,137	824	680	315	142	119	256	11,865		Aoû
	Sep	7,052	1,886	764	655	407	139	55	137	193	11,288		Sep
	Oct	5,652	1,415	1,483	725	659	209	52	130	208	10,533		Oct
	Nov	4,147	947	1,001	882	544	157	53	127	138	7,996		Nov
	Dec	6,092	921	1,380	870	454	185	102	144	167	10,315		Dec
2015	Jan	4,664	693	1,487	619	470	201	59	154	177	8,524	2015	Jan
	Feb	2,479	386	991	504	389	164	53	258 r	165	5,389		Fév
	Mar	2,335	495	540	482	348	234	74	120 r	209	4,837		Mar
	Apr	2,116	549	614	428	327	166	63	122	193	4,578		Avr

Source: Immigration Department / Service de l'Immigration

* there are missing batches with an estimated total of 457 visitors missing, April figures will be revised once the missing flight batches are located.

r revised

Table 4 : Overseas Arrivals of Residents by Nationality
Tableau 4 : Arrivées des résidents par nationalité

Year	Month	Ni-Vanuatu	Australian Australien	French Français	British Anglais	New Zealander Néo- Zélandais	Asian Asiatiques	Pacific Islanders Autres pays du Pacifique	North Americans Américain du Nord	Other countries Autres pays	TOTAL	Année	Mois
2011		12,508	3,867	1,802	244	1,370	719	1,090	352	321	22,273	2011	
2012		14,317	3,629	1,526	203	1,236	696	686	370	295	22,958	2012	
2013		15,410	4,096	1,782	167	1,293	915	1,007	566	375	25,611	2013	
2014		15,044	4,297	1,934	104	1,274	966	1,161	690	414	25,884	2014	
2011	Apr	942	304	140	21	123	51	45	27	26	1,679	2011	Avr
2012	Apr	1,112	327	102	15	110	76	41	37	22	1,842	2012	Avr
2013	Apr	1,259	352	160	21	114	63	56	30	28	2,083	2013	Avr
	May	1,559	297	110	17	99	70	48	34	40	2,274		Mai
	June	1,386	353	153	31	124	94	83	44	27	2,295		Juin
	July	1,074	390	162	33	112	75	192	41	38	2,117		Juil
	Aug	1,014	302	138	5	90	75	67	56	30	1,777		Aoû
	Sep	2,026	341	130	1	80	90	78	66	37	2,849		Sep
	Oct	863	386	184	1	93	92	64	64	26	1,773		Oct
	Nov	1,692	382	153	1	102	87	75	66	24	2,582		Nov
	Dec	1,951	310	139	11	117	60	78	55	29	2,750		Dec
2014	Jan	1,071	456	230	4	144	88	195	109	31	2,328	2014	Jan
	Feb	678	319	176	1	100	75	98	67	26	1,540		Fév
	Mar	864	383	139	12	125	76	84	37	39	1,759		Mar
	Apr	1,149	294	111	8	88	56	63	36	24	1,829		Avr
	May	1,472	330	123	9	102	97	99	51	40	2,323		Mai
	June	1,312	353	164	15	114	65	80	55	34	2,192		Juin
	July	1,185	350	135	10	99	100	121	57	29	2,086		Juil
	Aug	1,213	355	263	11	118	84	88	62	52	2,246		Aoû
	Sep	1,748	376	107	19	79	86	83	46	24	2,568		Sep
	Oct	825	396	213	5	79	108	87	59	34	1,806		Oct
	Nov	1,713	365	145	10	122	75	83	54	32	2,599		Nov
	Dec	1,814	320	128	0	104	56	80	57	49	2,608		Dec
2015	Jan	1,306	368	220	4	138	94	181	74	48	2,433	2015	Jan
	Feb	814	258	180	0	96	83	80	46	27	1,584		Fév
	Mar	1,033	363	102	2	103	105	81	114	30	1,933		Mar
	Apr	1,290	371	183	3	122	76	89	39	51	2,224		Avr

Source: Immigration Department / Service de l'Immigration

r revised

Table 5 : Visitors Arriving by Air Intended Length of Stay***Tableau 5 : Arrivée des Visiteurs à longue durée de Séjour**

Year	Month	AVERAGE INTENDED LENGTH OF STAY / LA MOYENNE DE LONGUE DUREE DE SEJOUR			Année	Mois
		Port Vila	Luganville	Vanuatu		
2011		8.9	10.9	9.9	2011	
2012		9.8	11.1	10.5	2012	
2013		10.8	11.6	11.2	2013	
2014		9.5	11.5	10.6	2014	
2011	Apr	8.2	13.8	11.0	2011	Apr
2012	Apr	9.7	10.8	10.2	2012	Apr
2013	Apr	10.7	10.8	10.8	2013	Avr
	May	9.5	12.6	11.0		Mai
	June	9.2	11.7	10.4		Juin
	July	10.0	12.0	11.0		Juil
	Aug	9.5	13.2	11.3		Aoû
	Sep	9.0	12.8	10.9		Sep
	Oct	15.7	10.6	13.1		Oct
	Nov	8.0	11.8	9.9		Nov
	Dec	11.1	12.2	11.6		Dec
2014	Jan	10.4	13.6	12.0	2014	Jan
	Feb	13.1	16.7	14.9		Fév
	Mar	9.9	9.0	9.5		Mar
	Apr*	9.0	10.8	9.9		Avr
	May	8.8	13.1	11.0		Mai
	June	9.2	10.9	10.0		Juin
	July	9.9	13.1	11.5		Juil
	Aug	8.8	10.2	9.5		Aoû
	Sep	9.0	9.7	9.3		Sep
	Oct	8.1	8.6	9.3		Oct
	Nov	8.3	9.6	9.0		Nov
	Dec	9.7	13.1	11.4		Dec
2015	Jan	8.9	9.2	9.0	2015	Jan
	Feb	12.5	10.8	11.7		Fév
	Mar	11.5	15.5	13.5		Mar
	Apr	11.1	10.4	10.8		Avr

Source: Immigration Department/Service de l'Immigration

* there are missing batches with an estimated total of 457 visitors missing, April figures will be revised once the missing flight batches are located.

Table 6 : Visitors Arriving by Air Average Age
Tableau 6 : Arrivée des Visiteurs par Age moyen

Year	Month	AVERAGE AGE OF VISITORS / L'AGE MOYEN DES VISITEURS			Année	Mois
		Port Vila	Luganville	Vanuatu		
2011	Apr	37.0	21.9	29.5	2011	Avr
2012	Apr	38.0	42.9	40.5	2012	Avr
2013	Apr	38.1	34.4	36.2	2013	Avr
	May	41.7	46.7	44.2		Mai
	June	37.0	37.5	37.2		Juin
	July	34.6	41.5	38.0		Juil
	Aug	38.1	43.7	40.9		Aoû
	Sep	35.9	39.2	37.6		Sep
	Oct	34.1	31.9	33.0		Oct
	Nov	32.5	38.7	35.6		Nov
	Dec	29.8	33.6	31.7		Dec
2014	Jan	35.1	32.4	33.7	2014	Jan
	Feb	44.8	38.9	41.9		Fév
	Mar	40.1	46.9	43.5		Mar
	Apr*	37.3	40.8	39.0		Avr
	May	41.8	44.3	43.1		Mai
	June	38.6	38.3	38.4		Juin
	July	37.9	41.2	39.6		Juil
	Aug	39.9	46.1	43.0		Aoû
	Sep	37.5	40.4	38.9		Sep
	Oct	39.2	44.7	38.9		Oct
	Nov	38.9	41.1	40.0		Nov
	Dec	34.3	35.2	34.7		Dec
2015	Jan	33.3	36.2	34.8	2015	Jan
	Feb	39.6	46.4	43.0		Fév
	Mar	39.6	41.2	40.4		Mar
	Apr	38.7	41.7	40.2		Avr

Source: Immigration Department/Service de l'Immigration

* there are missing batches with an estimated total of 457 visitors missing, April figures will be revised once the missing flight batches are located.

Table 7: Visitors travelling to Outer Islands, Vanuatu**Tableau 7: Les visiteurs en voyage d'Îles Extérieures, Vanuatu**

Year	Month	Tanna	Santo	Efate offshore Islands	Pentecost Island	Malekula	Ambrym	Other Islands	TOTAL	Année	Mois
				Efate et les îles côtières	îles Pentecôte	Malicolo		D'autres îles			
2014	May	424	352	148	62	36	33	80	1,135	2014	Mai
	June	866	694	307	92	62	66	155	2,242		Juin
	July	1293	983	355	78	109	78	230	3,126		Juil
	Aug	1235	813	405	26	123	131	226	2,959		Aoû
	Sept	715	510	257	63	118	86	189	1,938		Sept
	Oct	884	670	228	37	82	57	258	2,216		Oct
	Nov	499	366	255	8	65	51	145	1,389		Nov
	Dec	414	349	189	13	30	19	66	1,080		Dec
2015	Jan	611	420	261	15	56	22	103	1,488	2015	Jan
	Feb	264	208	46	11	27	25	65	646		Fév
	Mar	257	249	139	16	42	12	68	783		Mar
	Apr	351	327	243	59	28	38	117	1,163		Avr

Source: Department of Immigration

Note: Data on visitors travelling to outer islands is only available from May 2014