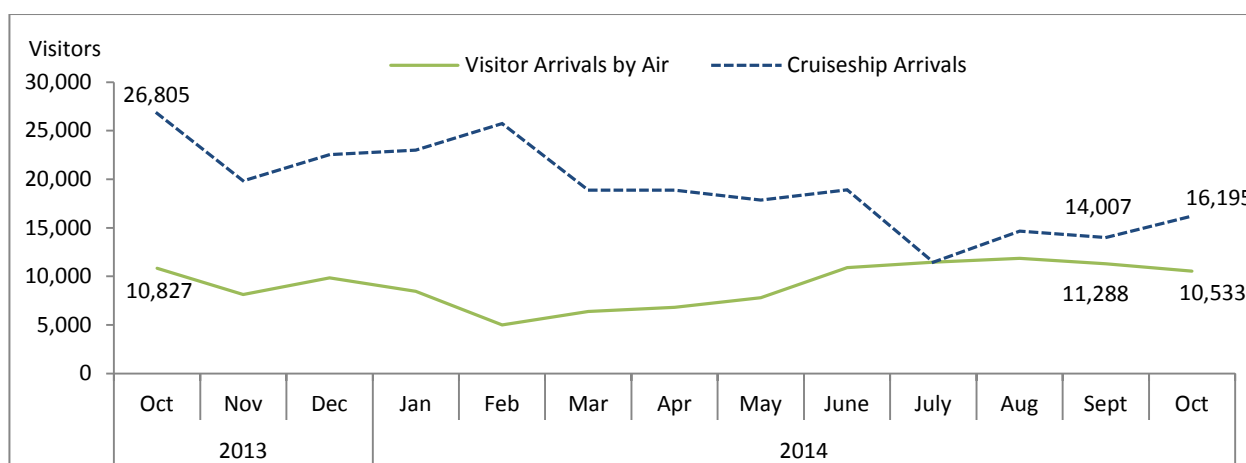


## STATISTICS UPDATE: INTERNATIONAL ARRIVAL STATISTICS

### OCTOBER 2014 HIGHLIGHTS

#### OVERVIEW

**Figure 1: International Visitor Arrivals: October 2013 to October 2014**



- In October 2014, international visitor arrivals<sup>1</sup> contributed 39% of total international visitor arrivals to Vanuatu. Visitor arrivals however declined over the October 2013 and September 2014.
- Visitor arrivals by air stood at 10,533 visitors in October 2014, a decline of 3% over October 2013 and also a decline of 7% over September 2014. The fall was reflected by the decline in the number of visitors arriving for holiday purposes.
- Cruise ship or day visitors made up 61% of total international arrivals in October 2014. Day visitors totalled 16,195 visitors, a decrease of 40% over October 2013, however increasing by 16% over September 2014. The decline was reflected by the decline in number of cruise ship visits falling from 10 in October 2013 to 8 in October 2014.

#### CONTENTS

	Page #
<b>HIGHLIGHTS</b>	<b>1-4</b>
<b>TABLES:</b>	
<b>1: Summary of Overseas migration</b>	<b>5</b>
<b>2: Visitors by Purpose of Visit</b>	<b>6</b>
<b>3: Visitors by Country of Usual Residence</b>	<b>7</b>
<b>4: Resident arrivals by Nationality</b>	<b>8</b>
<b>5: Visitors by air, Intended length of stay</b>	<b>9</b>
<b>6: Visitors by air, Average age</b>	<b>10</b>

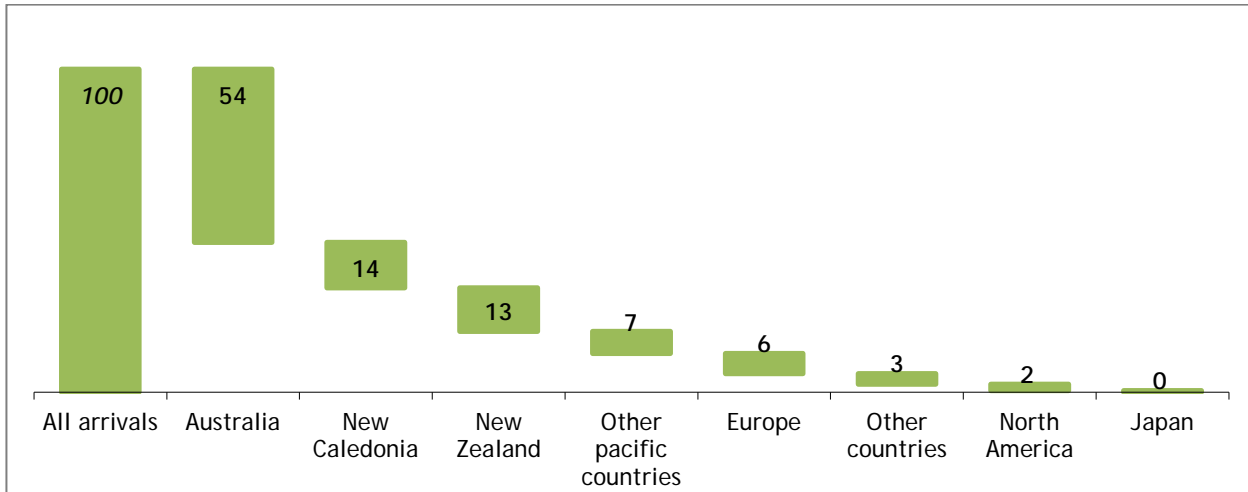
<sup>1</sup> Includes arrivals by yachts and excluding day visitors

PURPOSE OF VISIT FOR VISITORS ARRIVING BY AIR

- Holiday visitors contributed 76% of visitor arrivals by air in October 2014. Visitors arriving for business, meetings or conferences and visitors arriving for other purpose, education or sports make up 8% each, visitors arriving to visit friends and families at 7%, while those on transit at 1%.

COUNTRY OF USUAL RESIDENCE FOR VISITORS ARRIVING BY AIR

Fig 2: Percentage share of visitors in October 2014 by Country of Usual Residence

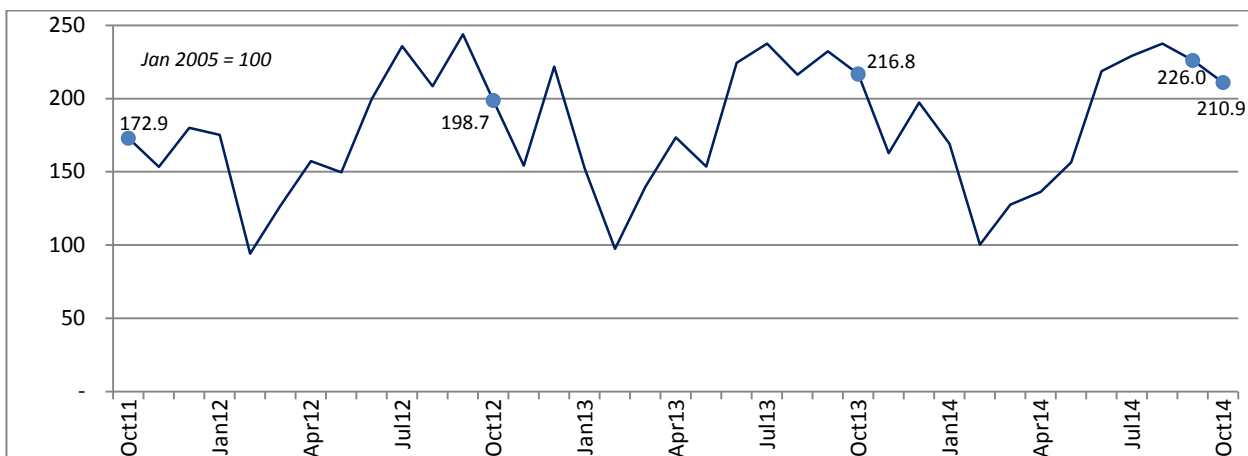


- Australian visitors continue to dominate visitor arrivals by air to Vanuatu at 54%, followed by New Caledonia at 14%, New Zealand at 13%, other pacific countries at 7%, Europe at 6%, other countries at 3%, and North America at 2%.

VISITOR ARRIVAL INDEX<sup>2</sup>

Figure 3 shows the total number of visitor arrivals and arrivals from Australia, New Zealand, New Caledonia and all other countries combined to show trends in arrivals, with the number of visitors

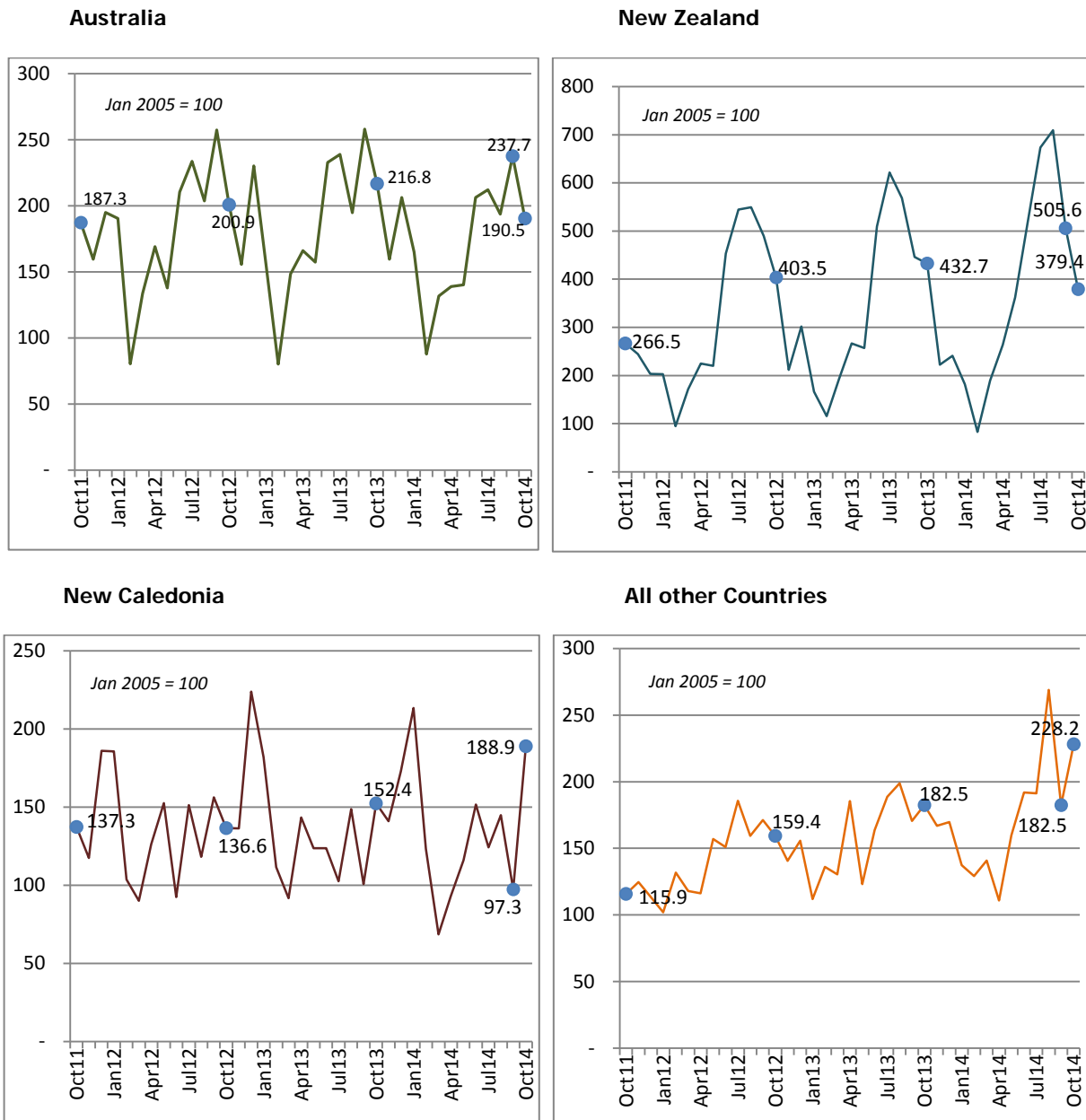
Fig 3: Index of Total Air Visitor Arrivals, October 2011 to October 2014 (January 2005 = 100)



<sup>2</sup> Tourism in Vanuatu is seasonal, and it is difficult to analyse changes in international arrivals and country of residence by looking at the monthly number of arrivals based on an index value of 100 in January 2005. This index allows analysis over time of the real increases and decreases in international air arrivals.

- In October 2014, index values of visitor arrivals stood at (3%) when compared to October 2013. (Figure 3)

**Figure 4: Index of Visitor Arrivals and Country of Usual Residence, October 2011 to October 2014 (January 2005 = 100)**



Note: the vertical axis scale varies in each country chart.

- The New Caledonia market showed an increase of 24% in index values in October 2014, while decreases were recorded for Australia and New Zealand at (12%) respectively over October 2013.

**AVERAGE INTENDED LENGTH OF STAY FOR VISITORS ARRIVING BY AIR**

- The average length of stay recorded 9 days in October 2014, a decline of 4 days over October 2013, while remaining unchanged over September 2014.

**AVERAGE AGE FOR VISITORS ARRIVING BY AIR**

- The average age of visitors arriving by air in October 2014 stood at 39 years, an increase of 6 years over October 2013, while remaining unchanged over September 2014.

**DATA SOURCE**

All International arrival statistics by air provided in the report is sourced from completed Arrival and Departure cards at the Department of Immigration. Cruise ship figures are also sourced from the Department of Immigration.

**NEXT UPDATE (MONTHLY)**

**RELEASE DATE**

November 2014

30<sup>th</sup> January 2015

**PROVINCIAL STATISTICS OFFICES**

PO Box 22  
Lakatoro, Malekula  
MALAMPA PROVINCE

Commercial Center  
Lenakel, Tanna  
TAFEA PROVINCE

PO Box 8  
Saratamata, Ambae  
PENAMA PROVINCE

Sola, Vanua Lava  
Banks group  
TORBA PROVINCE

Millennium Building  
Luganville, Santo  
SANMA PROVINCE




**Simil Johnson**  
Government Statistician

**Table 1 : Summary of Overseas Migration**  
**Tableau 1 : Résumé des échanges migratoires avec l'extérieur**

Year	Month	ARRIVALS / ARRIVEES						DEPARTURES / DEPARTURES						Cruiseship Arrivals/ Croisiéristes	Année	Mois
		PORT VILA		LUGANVILLE		TOTAL		PORT VILA		LUGANVILLE		TOTAL				
		Residents Résidents	Visitors Visiteurs	Residents Résidents	Visitors Visiteurs	Residents Résidents	Visitors Visiteurs	Resident Résidents	Visitor Visiteurs	Resident Résidents	Visitors Visiteurs	Resident Résidents	Visitors Visiteurs			
2010		20,531	94,909	522	2,271	21,053	97,180	13,133	104,573	188	1,999	13,321	106,572	140,468	2010	
2011		21,752	91,107	521	2,853	22,273	93,960	12,958	96,836	156	1,954	13,114	98,790	154,938	2011	
2012		22,594	105,611	364	2,550	22,958	108,161	14,803	113,158	134	2,339	14,937	115,497	213,243	2012	
2013		25,116	106,466	495	3,643	25,611	110,109	16,380	118,753	164	3,496	16,544	122,249	247,296	2013	
2010	Oct	1,778	8,796	52	205	1,830	9,001	1,160	10,739	13	176	1,173	10,915	13,549	2010	Oct
2011	Oct	1,760	8,354	55	283	1,815	8,637	1,377	10,398	13	237	1,390	10,635	7,210	2011	Oct
2012	Oct	1,717	9,663	29	259	1,746	9,922	1,535	11,688	11	282	1,546	11,970	26,644	2012	Oct
	Nov	2,118	7,431	49	273	2,167	7,704	1,593	8,852	15	230	1,608	9,082	16,697		Nov
	Dec	2,420	10,774	49	296	2,469	11,070	1,348	9,365	28	317	1,376	9,682	17,188		Dec
2013	Jan	1,997	7,415	64	197	2,061	7,612	1,331	11,574	23	325	1,354	11,899	33,491	2013	Jan
	Feb	1,333	4,809	21	122	1,354	4,931	1,919	5,497	14	137	1,933	5,634	16,127		Fév
	Mar	1,656	6,825	40	152	1,696	6,977	1,465	6,799	2	155	1,467	6,954	16,060		Mar
	Apr	2,033	8,182	50	480	2,083	8,662	1,119	9,347	18	399	1,137	9,746	22,314		Avr
	May	2,222	7,327	52	343	2,274	7,670	1,337	8,232	21	302	1,358	8,534	16,817		Mai
	June	2,250	10,806	45	400	2,295	11,206	1,160	10,307	11	427	1,171	10,734	27,524		Juin
	July	2,073	11,390	44	465	2,117	11,855	1,057	12,901	9	412	1,066	13,313	16,759		Juil
	Aug	1,769	10,682	8	115	1,777	10,797	1,265	11,793	2	142	1,267	11,935	13,642		Aoû
	Sep	2,823	11,340	26	256	2,849	11,596	1,073	11,442	20	284	1,093	11,726	15,370		Sep
	Oct	1,739	10,392	34	435	1,773	10,827	928	12,254	10	455	938	12,709	26,805		Oct
	Nov	2,539	7,825	43	298	2,582	8,123	2,070	9,887	17	229	2,087	10,116	19,834		Nov
	Dec	2,682	9,473	68	380	2,750	9,853	1,656	8,720	17	229	1,673	8,949	22,553		Dec
2014	Jan	2,303	8,288	25	159	2,328	8,447	1,393	11,871	10	252	1,403	12,123	23,016	2014	Jan
	Feb	1,491	4,878	49	131	1,540	5,009	2,051	5,763	7	85	2,058	5,848	25,728		Fév
	Mar	1,693	6,169	66	207	1,759	6,376	1,149	7,047	7	208	1,156	7,255	18,883		Mar
	Apr*	1,753	6,433	76	371	1,829	6,804	3,172	7,089	5	351	3,177	7,440	18,880		Avr
	May	2,293	7,483	30	329	2,323	7,812	1,360	8,231	59	218	1,419	8,449	17,869		Mai
	June	2,154	10,481	38	436	2,192	10,917	967	9,984	32	355	999	10,339	18,911		Juin
	July	2,030	10,944	56	502	2,086	11,446	1,339	12,891	67	341	1,406	13,232	11,470		Juil
	Aug	2,208	11,515	38	350	2,246	11,865	1,311	12,517	81	219	1,392	12,736	14,667		Aoû
	Sep	2,509	10,731	59	557	2,568	11,288	879	10,956	67	390	946	11,346	14,007		Sep
	Oct	1,750	10,017	56	516	1,806	10,533	1,624	12,394	30	426	1,654	12,820	16,195		Oct

Source: Immigration Department/Service de l'Immigration

- Nil or less than half final unit shown / Résultat nul ou inférieur au demi de l'unité indiquée

\* there are missing batches with an estimated total of 457 visitors missing, April figures will be revised once the missing flight batches are located.

r revised

**Table 2 : Visitor Arrivals by Purpose of Visit**  
**Tableau 2 : Arrivées de visiteurs selon le motif du voyage**

Year	Month	VISITORS/VISITEURS						Total Visitors	Année	Mois
		Holidays	Visiting Friends and relatives	Business, Meetings/ Conferences	Stop Over	Others, Education, sports				
		Vacances	Visite à des amis et à la famille	Affaires, réunions ou conférence	Escale	Autres, education, sport	Visiteurs global			
2010		80,681	6,079	9,615	692	113	97,180	2010		
2011		75,821	7,320	9,933	790	96	93,960	2011		
2012		88,085	7,910	11,294	602	270	108,161	2012		
2013		89,253	7,755	9,079	613	3,409	110,109	2013		
2010	Oct	8,391	201	377	24	8	9,001	2010	Oct	
2011	Oct	6,991	642	953	51	-	8,637	2011	Oct	
2012	Oct	8,071	586	1,192	43	30	9,922	2012	Oct	
	Nov	6,152	491	980	59	22	7,704		Nov	
	Dec	8,989	1,204	803	26	48	11,070		Dec	
2013	Jan	6,315	596	638	63	-	7,612	2013	Jan	
	Feb	3,431	437	856	16	191	4,931		Fév	
	Mar	5,557	594	645	57	124	6,977		Mar	
	Apr	6,874	558	937	28	265	8,662		Avr	
	May	6,029	565	800	33	243	7,670		Mai	
	June	9,152	723	775	62	494	11,206		Juin	
	July	9,819	853	582	89	512	11,855		Juil	
	Aug	8,678	767	1,001	59	292	10,797		Aoû	
	Sep	9,814	567	847	70	298	11,596		Sep	
	Oct	8,806	705	849	82	385	10,827		Oct	
	Nov	6,389	566	757	36	375	8,123		Nov	
	Dec	8,389	824	392	18	230	9,853		Dec	
2014	Jan	7,317	544	335	63	188	8,447	2014	Jan	
	Feb	3,773	407	462	47	320	5,009		Fév	
	Mar	4,906	406	628	35	401	6,376		Mar	
	Apr*	5,593	406	640	11	154	6,804		Avr	
	May	6,213	534	776	22	267	7,812		Mai	
	June	8,865	744	880	52	376	10,917		Juin	
	July	9,423	830	578	121	494	11,446		Juil	
	Aug	9,321	743	882	214	705	11,865		Aoû	
	Sep	8,904	699	807	147	731	11,288		Sep	
	Oct	8,042	685	851	145	810	10,533		Oct	

Source: Immigration Department/Service de l'Immigration

- Nil or less than half final unit shown / résultat nul ou inférieur au demi de l'unité indiquée

\* there are missing batches with an estimated total of 457 visitors missing. April figures will be revised once the missing flight batches are located.

**Table 3 : Visitor Arrivals by Usual Country of Residence**  
**Tableau 3 : Arrivées des visiteurs par pays de résidence habituelle**

Year	Month	Australia	New Zealand	New Caledonia	Other Pacific Countries	Europe	North America	Japan	Other Countries	TOTAL	Année	Mois
		Australie	Nouvelle-Zélande	Nouvelle-Calédonie	Autres Pays du Pacifique		Amérique du Nord	Japon	Autres pays			
2010		58,760	11,927	11,410	4,719	4,888	2,395	517	2,564	97,180	2010	
2011		57,843	11,399	11,376	3,397	5,265	1,922	630	2,128	93,960	2011	
2012		65,405	14,430	13,138	4,313	5,491	2,094	705	2,585	108,161	2012	
2013		65,776	15,068	12,515	4,874	5,544	2,614	659	3,059	110,109	2013	
2010	Oct	5,988	1,039	858	308	433	194	31	150	9,001	2010	Oct
2011	Oct	5,558	994	1,078	219	432	116	46	194	8,637	2011	Oct
2012	Oct	5,960	1,505	1,072	334	576	216	41	218	9,922	2012	Oct
	Nov	4,622	790	1,071	293	505	156	55	212	7,704		Nov
	Dec	6,833	1,126	1,758	543	361	173	68	208	11,070		Dec
2013	Jan	4,591	621	1,428	231	364	135	32	210	7,612	2013	Jan
	Feb	2,448	429	876	440	340	154	26	218	4,931		Fév
	Mar	4,405	718	720	344	388	135	36	231	6,977		Mar
	Apr	4,931	994	1,126	522	533	222	58	276	8,662		Avr
	May	4,669	959	971	293	374	165	62	177	7,670		Mai
	June	6,911	1,901	971	461	419	279	39	225	11,206		Juin
	July	7,091	2,319	805	384	654	217	47	338	11,855		Juil
	Aug	5,781	2,121	1,167	444	672	245	88	279	10,797		Aoû
	Sep	7,660	1,664	790	458	399	269	67	289	11,596		Sep
	Oct	6,431	1,614	1,196	418	523	311	65	269	10,827		Oct
	Nov	4,735	830	1,107	413	448	239	86	265	8,123		Nov
	Dec	6,123	898	1,358	466	430	243	53	282	9,853		Dec
2014	Jan	4,898	679	1,676	284	414	188	42	266	8,447	2014	Jan
	Feb	2,608	310	968	357	304	207	33	222	5,009		Fév
	Mar	3,907	707	538	462	360	146	48	208	6,376		Mar
	Apr*	4,125	984	732	265	368	108	21	201	6,804		Avr
	May	4,162	1,350	911	369	404	215	72	329	7,812		Mai
	June	6,123	1,936	1,191	411	453	306	82	415	10,917		Juin
	July	6,295	2,513	975	526	544	198	61	334	11,446		Juil
	Aug	5,747	2,645	1,137	824	680	315	142	375	11,865		Aoû
	Sep	7,052	1,886	764	655	407	139	55	330	11,288		Sep
	Oct	5,652	1,415	1,483	725	659	209	52	338	10,533		Oct

Source: Immigration Department / Service de l'Immigration

\* there are missing batches with an estimated total of 457 visitors missing, April figures will be revised once the missing flight batches are located.

**Table 4 : Overseas Arrivals of Residents by Nationality****Tableau 4 : Arrivées des résidents par nationalité**

Year	Month	Ni-Vanuatu	Australian Australien	French Français	British Anglais	New Zealander Néo- Zélandais	Asian Asiatiques	Pacific Islanders Autres pays du Pacifique	North Americans Américain du Nord	Other countries Autres pays	TOTAL	Année	Mois
2010		11,794	3,700	1,894	132	1,436	504	768	496	330	21,053	2010	
2011		12,508	3,867	1,802	244	1,370	719	1,090	352	321	22,273	2011	
2012		14,317	3,629	1,526	203	1,236	696	686	370	295	22,958	2012	
2013		15,410	4,096	1,782	167	1,293	915	1,007	566	375	25,611	2013	
2010	Oct	893	412	191	15	153	39	43	47	37	1,830	2010	Oct
2011	Oct	846	402	179	29	159	65	56	58	21	1,815	2011	Oct
2012	Oct	948	378	137	15	86	62	61	24	35	1,746	2012	Oct
	Nov	1,442	304	146	18	99	36	56	35	31	2,167		Nov
	Dec	1,690	337	110	18	115	66	64	43	26	2,469		Dec
2013	Jan	983	391	236	18	158	73	116	51	35	2,061	2013	Jan
	Feb	688	270	93	12	84	62	87	26	32	1,354		Fév
	Mar	915	322	124	16	120	74	63	33	29	1,696		Mar
	Apr	1,259	352	160	21	114	63	56	30	28	2,083		Avr
	May	1,559	297	110	17	99	70	48	34	40	2,274		Mai
	June	1,386	353	153	31	124	94	83	44	27	2,295		Juin
	July	1,074	390	162	33	112	75	192	41	38	2,117		Juil
	Aug	1,014	302	138	5	90	75	67	56	30	1,777		Aoû
	Sep	2,026	341	130	1	80	90	78	66	37	2,849		Sep
	Oct	863	386	184	1	93	92	64	64	26	1,773		Oct
	Nov	1,692	382	153	1	102	87	75	66	24	2,582		Nov
	Dec	1,951	310	139	11	117	60	78	55	29	2,750		Dec
2014	Jan	1,071	456	230	4	144	88	195	109	31	2,328	2014	Jan
	Feb	678	319	176	1	100	75	98	67	26	1,540		Fév
	Mar	864	383	139	12	125	76	84	37	39	1,759		Mar
	Apr	1,149	294	111	8	88	56	63	36	24	1,829		Avr
	May	1,472	330	123	9	102	97	99	51	40	2,323		Mai
	June	1,312	353	164	15	114	65	80	55	34	2,192		Juin
	July	1,185	350	135	10	99	100	121	57	29	2,086		Juil
	Aug	1,213	355	263	11	118	84	88	62	52	2,246		Aoû
	Sep	1,748	376	107	19	79	86	83	46	24	2,568		Sep
	Oct	1,752	356	114	19	81	88	84	46	25	2,565		Oct

Source: Immigration Department / Service de l'Immigration



**Table 5 : Visitors Arriving by Air Intended Length of Stay\*****Tableau 5 : Arrivée des Visiteurs à longue durée de Séjour**

Year	Month	AVERAGE INTENDED LENGTH OF STAY / LA MOYENNE DE LONGUE DUREE DE SEJOUR			Année	Mois
		Port Vila	Luganville	Vanuatu		
2010		9.5	10.9	10.2	2010	
2011		8.9	10.9	9.9	2011	
2012		9.8	11.1	10.5	2012	
2013		10.8	11.6	11.2	2013	
2010	Oct	10.0	11.0	10.5	2010	Oct
2011	Oct	8.0	9.0	8.5	2011	Oct
2012	Oct	10.4	10.5	10.5	2012	Oct
	Nov	8.9	9.0	9.0		Nov
	Dec	8.9	12.7	10.8		Dec
2013	Jan	11.6	11.2	11.4	2013	Jan
	Feb	15.6	9.4	12.5		Fév
	Mar	10.1	11.2	10.6		Mar
	Apr	10.7	10.8	10.8		Avr
	May	9.5	12.6	11.0		Mai
	June	9.2	11.7	10.4		Juin
	July	10.0	12.0	11.0		Juil
	Aug	9.5	13.2	11.3		Aoû
	Sep	9.0	12.8	10.9		Sep
	Oct	15.7	10.6	13.1		Oct
	Nov	8.0	11.8	9.9		Nov
	Dec	11.1	12.2	11.6		Dec
2014	Jan	10.4	13.6	12.0	2014	Jan
	Feb	13.1	16.7	14.9		Fév
	Mar	9.9	9.0	9.5		Mar
	Apr*	9.0	10.8	9.9		Avr
	May	8.8	13.1	11.0		Mai
	June	9.2	10.9	10.0		Juin
	July	9.9	13.1	11.5		Juil
	Aug	8.8	10.2	9.5		Aoû
	Sep	9.0	9.7	9.3		Sep
	Oct	8.1	8.6	9.3		Oct

Source: Immigration Department/Service de l'Immigration

\* there are missing batches with an estimated total of 457 visitors missing, April figures will be revised once the missing flight batches are located.

**Table 6 : Visitors Arriving by Air Average Age**  
**Tableau 6 : Arrivée des Visiteurs par Age moyen**

Year	Month	AVERAGE AGE OF VISITORS / L'AGE MOYEN DES VISITEURS			Année	Mois
		Port Vila	Luganville	Vanuatu		
2010	Oct	38.9	40.2	39.6	2010	Oct
2011	Oct	39.2	40.7	39.9	2011	Oct
2012	Oct	41.5	46.5	44.0	2012	Oct
	Nov	36.6	41.6	39.1		Nov
	Dec	36.6	36.9	36.8		Dec
2013	Jan	35.4	44.2	39.8	2013	Jan
	Feb	32.0	46.4	39.2		Fév
	Mar	37.0	41.5	39.2		Mar
	Apr	38.1	34.4	36.2		Avr
	May	41.7	46.7	44.2		Mai
	June	37.0	37.5	37.2		Juin
	July	34.6	41.5	38.0		Juil
	Aug	38.1	43.7	40.9		Aoû
	Sep	35.9	39.2	37.6		Sep
	Oct	34.1	31.9	33.0		Oct
	Nov	32.5	38.7	35.6		Nov
	Dec	29.8	33.6	31.7		Dec
2014	Jan	35.1	32.4	33.7	2014	Jan
	Feb	44.8	38.9	41.9		Fév
	Mar	40.1	46.9	43.5		Mar
	Apr*	37.3	40.8	39.0		Avr
	May	41.8	44.3	43.1		Mai
	June	38.6	38.3	38.4		Juin
	July	37.9	41.2	39.6		Juil
	Aug	39.9	46.1	43.0		Aoû
	Sep	37.5	40.4	38.9		Sep
	Oct	39.2	44.7	38.9		Oct

Source: Immigration Department/Service de l'Immigration

\* there are missing batches with an estimated total of 457 visitors missing, April figures will be revised once the missing flight batches are located.