



**VANUATU NATIONAL STATISTICS OFFICE**  
 Private Mail Bag 9019  
 Ministry of Finance and Economic Management  
 Port Vila, Vanuatu  
 Ph: +678 22110/22111, Fax: +678 24583  
 E-mail: [stats@vanuatu.gov.vu](mailto:stats@vanuatu.gov.vu),  
 Web: [www.vnsso.gov.vu](http://www.vnsso.gov.vu)



## STATISTICS UPDATE: CONSUMER PRICE INDEX

### JUNE QUARTER 2016 HIGHLIGHTS

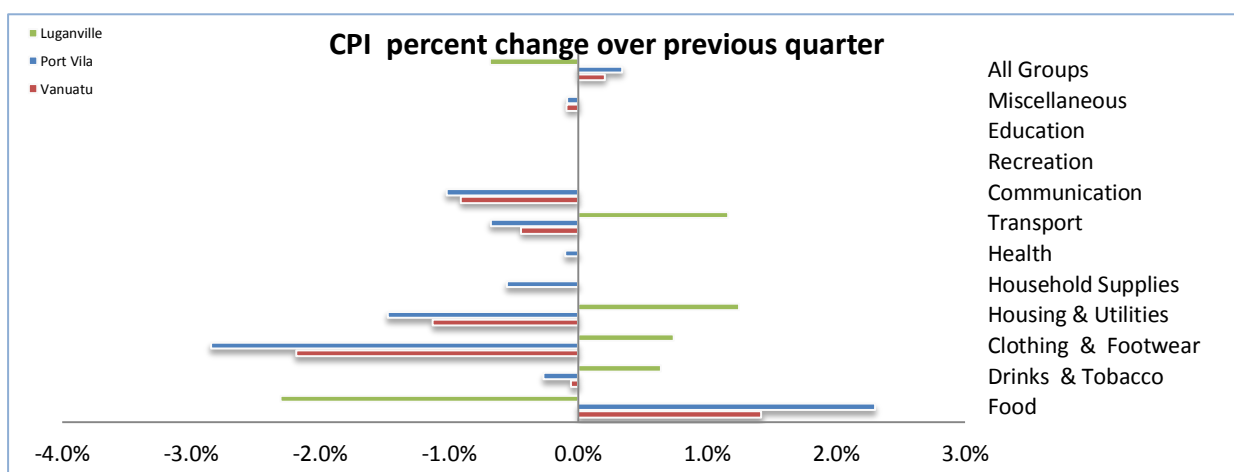


Figure 1: CPI per cent change over previous quarter

### CPI QUARTERLY MOVEMENT

The Consumer Price Index (CPI) of June 2016 indicated a slight increase of (0.2 %). Port Vila slightly increased by (0.3%), while Luganville index decreased by (-0.7%) compared to the previous quarter. The only expenditure group that contributed to the increase in the CPI was Food (+1.4%). On the other hand, Clothing and Footwear contributed a decrease of (-2.2%), Housing Utilities (-1.1%), Communication (-0.9%), Transportation (-0.4%), Drinks and Tobacco, and Miscellaneous shows decrease of (-0.1%) respectively. Other expenditure groups: Household Supplies, Health, Recreation and Education all remained stable with (0.0%) respectively. The main contributor in prices was due to the increases in price movements of School fees, Fruits and Vegetables in Port Vila. However, the sub group that showed negative impact on the price movements were: Electricity and water supply charges, purchasing of new mobile phones, Automotive Fuel and oil in both region, woman’s clothing and business shoes in Port Vila, wines and spirits, Personal accessories and Toiletries in Luganville.

## CPI ANNUAL MOVEMENT

When compared to the June quarter of 2015, the Vanuatu index decreased by (-2.5%), Port Vila index decrease by (-3.1%) while Luganville index indicated a slight increase of (0.5%). At national level, the expenditure groups that contributed to the decrease over the same quarter of last year were: Food (-6.6%), Housing Utilities (-2.4%), Miscellaneous (-2.3%), Health (-0.8%), Communication (-0.5%). Thus, the decreases in these expenditure groups were the result of decreases in price movements of Fruits and Vegetables, Electricity supply charges, Automotive Fuels, and oils Prescription of drugs, and mobile phones. However, the three groups that recorded an offsetting raise were Transport (+5.0%) Education (+4.7%), Recreation (+1.7%), Household supplies and Clothing and Footwear (+1.3%) respectively, and Drinks and Tobacco (+0.4%).

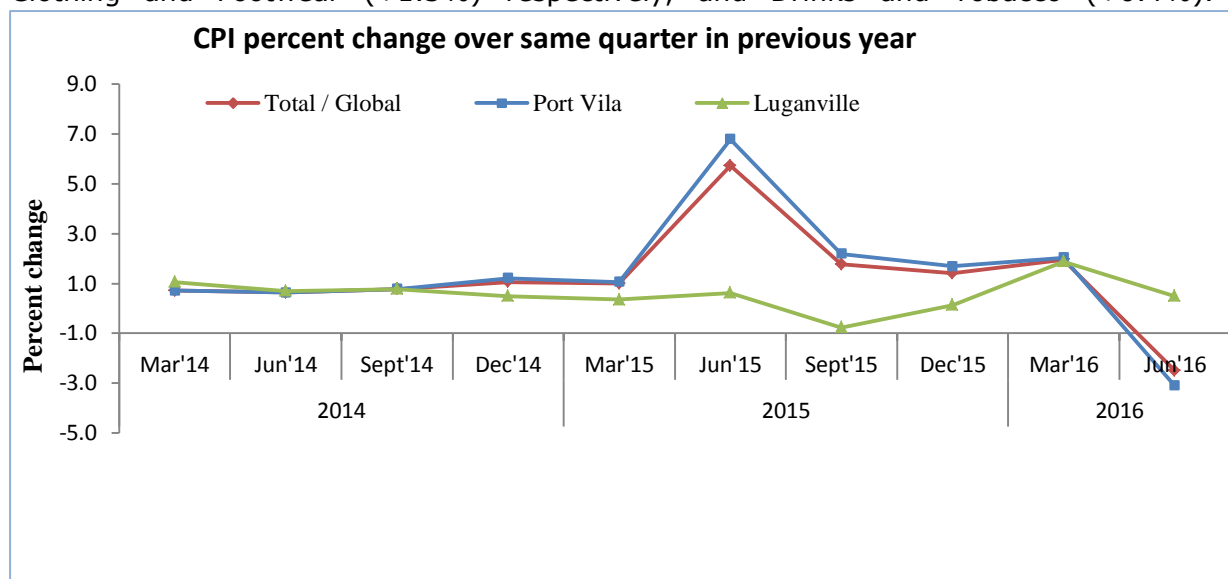


Figure 2: CPI per cent change over same quarter in previous year

## UNDERLYING INFLATION

‘Underlying inflation’ is a measure derived from the CPI excluding items which typically have unstable or volatile prices; because of things like seasonal variation or policy decisions. Underlying inflation decrease by (-0.9 %) in June quarter of 2016 compared to the previous quarter (March, 2016). In addition, it recorded an increase of (0.3%) over the same quarter of 2015.

## CONCEPTS AND DEFINITIONS

The Consumer Price Index (CPI) is used to measure the changes in the prices of goods and services purchased by households in Port Vila and Luganville over a period of time. The separate indices for these two major commercial centres are then combined to create the Vanuatu CPI.

This change in prices is sometimes called inflation. Retail stores, supermarkets, liquor outlets, transport operators, service stations and other providers of goods and services

help supply the Vanuatu National Statistics Office with the information to calculate the CPI.

Prices are collected for exactly the same goods and services each quarter. This ensures that changes in the cost of goods and services over time are not due to changes in the quantity or quality of the goods and services purchased.

#### ATTACHED:

Table 1 Consumer Price Index: All Items

Table 2 Consumer Price Index: Expenditure Groups

NEXT UPDATE (QUARTERLY)

RELEASE DATE

August

4<sup>th</sup> November, 2016

#### MORE INFORMATION

For statistical enquiries about this topic, please contact:

National Statistics Office: (678) 22110/22111 – email: [stats@vanuatu.gov.vu](mailto:stats@vanuatu.gov.vu)

#### NATIONAL STATISTICS OFFICES IN THE PROVINCES

Sola, Vanua Lava	Millennium Building	PO Box 22	PO Box 8	Commercial Center
Banks group,	Luganvillie, Santo	Lakatoro, Malekula	Saratamata, Ambae	Lenakel, Tanna
Torba Province	Sanma Province.	Malampa Provnicce.	Penama Province	Tafea Province



**Andy Calo**

**Acting Government Statistician**

<b>Table 1 Consumer Price Index</b>					<b>Base: 1st Quarter 2000 = 100</b>								
<b>Tableau 1 Indice des prix à la consommation</b>					<b>Base: 1<sup>er</sup> Trimestre 2000 = 100</b>								
Consumer Price Indices				Underlying Inflation Index	Rate of Change (%)			Rate of Change (%)			Année	Trimestre	
Year	Quarter	Indice des prix à la consommation		Inflation sous-jacente	Variation par rapport			Variation					
		Total / Global	Port Vila	Luganville	Total / Global	Port Vila	Luganville	Total / Global	Port Vila	Luganville			
					<b>Over Previous Year / à l'année précédente</b>			<b>4th Quarter over 4th Quarter of previous year / du 4ème trimestre au 4ème trimestre de l'année précédente</b>					
2011		137.0	136.7	138.2	123.4	0.9	1.0	0.5	1.2	1.4	0.4	2011	
2012		138.8	138.6	139.9	126.8	1.4	1.4	1.2	0.8	0.9	0.5	2012	
2013		140.8	140.6	142.1	129.3	1.5	1.4	1.6	1.5	1.4	1.7	2013	
2014		142.0	141.7	143.2	130.7	0.8	0.8	0.8	1.1	1.2	0.5	2014	
2015		145.5	145.9	143.3	131.9	2.5	2.9	0.1	1.4	1.7	0.1	2015	
					<b>Over Previous Quarter / au trimestre précédent</b>			<b>Over Same Quarter of previous year / au même trimestre de l'année précédente</b>					
2006	1st	115.4	115.2	116.3		0.6	0.7	0.2	1.9	1.9	1.7	2006	1er
	2nd	116.1	115.9	117.4		0.6	0.6	0.9	2.2	2.3	1.9		2ème
	3rd	116.6	116.5	117.0		0.4	0.5	-0.3	2.1	2.2	1.2		3ème
	4th	116.9	116.7	117.7		0.3	0.2	0.6	1.9	2.0	1.4		4ème
2007	1st	119.4	118.9	122.1	111.4	2.1	1.9	3.7	3.5	3.2	5.0	2007	1er
	2nd	120.9	120.6	122.2	113.7	1.3	1.4	0.1	4.1	4.1	-1.0		2ème
	3rd	121.3	121.2	122.1	113.9	0.3	0.5	-0.1	4.0	4.0	4.4		3ème
	4th	121.7	121.5	123.2	114.2	0.3	0.2	0.9	4.1	4.1	4.7		4ème
2008	1st	123.7	123.2	126.1	115.6	1.6	1.4	2.4	3.5	3.6	3.3	2008	1er
	2nd	125.6	125.3	127.3	117.9	1.6	1.7	0.9	3.9	3.9	4.1		2ème
	3rd	128.6	127.9	132.0	122.4	2.4	2.1	3.7	6.0	5.5	8.1		3ème
	4th	128.8	128.1	132.2	122.5	0.2	0.2	0.2	5.8	5.4	7.3		4ème
2009	1st	131.2	130.7	133.5	123.7	1.9	2.0	1.0	6.1	6.1	5.9	2009	1er
	2nd	132.3	131.9	134.1	123.9	0.8	0.9	0.4	5.3	5.3	5.3		2ème
	3rd	133.0	132.4	135.9	124.0	0.5	0.4	1.3	3.4	3.5	3.0		3ème
	4th	131.8	131.1	135.3	122.7	-0.9	-1.0	-0.4	2.3	2.3	2.3		4ème
2010	1st	134.9	134.6	136.3	123.3	2.4	2.7	0.7	2.8	3.0	2.1	2010	1er
	2nd	135.9	135.6	137.1	121.7	0.7	0.7	0.6	2.7	2.8	2.2		2ème
2011	1st	135.8	135.5	137.1	122.6	-0.4	-0.1	-1.2	0.7	0.7	0.6	2011	1er
	2nd	136.7	136.5	137.9	122.3	0.7	0.7	0.6	0.6	0.7	0.6		2ème
	3rd	137.4	137.2	138.4	124.3	0.5	0.5	0.4	1.0	1.2	0.3		3ème
	4th	137.9	137.6	139.3	124.5	0.4	0.3	0.7	1.2	1.4	0.4		4ème
2012	Mar'12	138.6	138.3	139.8	126.2	0.5	0.5	0.4	2.1	2.1	2.0	2012	1er
	Jun'12	138.7	138.5	139.7	126.9	0.1	0.1	-0.1	1.5	1.5	1.3		2ème
	Sept'12	138.9	138.7	139.9	126.6	0.1	0.1	0.1	1.1	1.1	1.1		3ème
	Dec'12	139.0	138.8	140.0	127.4	0.1	0.1	0.1	0.8	0.9	0.5		4ème
2013	Mar'13	140.5	140.3	141.2	129.0	1.1	1.1	0.9	1.4	1.4	1.0	2013	1er
	Jun'13	140.8	140.5	142.3	129.3	0.2	0.1	0.8	1.5	1.4	1.9		2ème
	Sept'13	140.9	140.6	142.6	129.4	0.1	0.1	0.2	1.4	1.4	1.9		3ème
	Dec'13	141.1	140.8	142.4	129.5	0.1	0.1	-0.1	1.5	1.4	1.7		4ème
2014	Mar'14	141.5	141.3	142.7	129.9	0.3	0.4	0.2	0.7	0.7	1.1	2014	1er
	Jun'14	141.7	141.4	143.3	130.6	0.1	0.1	0.4	0.6	0.6	0.7		2ème
	Sept'14	142.0	141.7	143.7	130.9	0.2	0.2	0.3	0.8	0.8	0.8		3ème
	Dec'14	142.6	142.5	143.1	131.3	0.4	0.6	-0.4	1.1	1.2	0.5		4ème
2015	Mar'15	142.9	142.8	143.2	130.9	0.2	0.2	0.1	1.0	1.1	0.4	2015	1er
	Jun'15	149.8	151.0	144.2	132.8	4.8	5.7	0.7	5.7	6.8	0.6		2ème
	Sept'15	144.5	144.8	142.6	131.4	-3.5	-4.1	-1.1	1.8	2.2	-0.8		3ème
	Dec'15	144.6	144.9	143.3	132.3	0.1	0.1	0.5	1.4	1.7	0.1		4ème
2016	Mar'16	145.7	145.7	145.9	133.3	0.8	0.6	1.8	2.0	2.0	1.9	2016	1er
	Jun'16	146.0	146.2	144.9	133.4	0.2	0.3	-0.7	-2.5	-3.1	0.5		2ème

**Table 2 Consumer Price Indices by Expenditure Group**  
**Tableau 2 Indice des prix à la consommation par poste de dépense**

**Base: 1st Quarter 2000 = 100**  
**Base: 1<sup>er</sup> Trimestre 2000 = 100**

Year	Quarter	Food and alimentaires	Alcoholic drinks and Tobacco son alcoolisée et tabac	Clothing & Footwear Habillement	Housing & Utilities Loyer, eau, et énergie etc.	Household Supplies Mobilier et équipement ménager etc.	Health Santé	Transport	Communication	Recreation Loisir	Education	Miscellaneous Autres	All Groups Indice Global	Année	Trimestre
<b>Vanuatu</b>															
2012	1st	144.8	176.8	98.5	132.1	106.7	101.6	143.8	97.9	134.8	107.8	107.2	138.6	2012	1er
	2nd	145.5	177.6	100.6	130.3	106.8	100.6	143.8	97.8	135.4	107.6	109.9	138.7		2ème
	3rd	145.9	177.7	102.5	129.7	107.7	100.2	143.7	98.0	136.0	107.6	110.0	138.9		3ème
	4th	145.5	177.6	102.7	129.8	107.8	100.2	143.6	98.3	139.4	107.6	112.8	139.0		4ème
2013	1st	146.9	177.7	103.3	132.8	108.7	101.0	143.8	98.7	140.6	110.1	112.0	140.5	2013	1er
	2nd	147.4	178.3	106.0	133.6	107.1	101.1	143.3	98.7	137.8	110.5	114.3	140.8		2ème
	3rd	147.7	178.5	107.3	133.6	107.2	101.3	143.0	98.3	136.6	110.5	114.8	140.9		3ème
	4th	148.4	179.5	107.2	133.6	107.0	101.3	143.0	98.3	133.4	110.5	114.5	141.1		4ème
2014	1st	149.5	179.5	107.5	133.6	107.1	101.4	143.0	98.3	132.1	111.0	114.7	141.5	2014	1er
	2nd	150.1	180.0	109.3	132.6	107.2	101.7	142.8	98.6	134	111.1	115.3	141.7		2ème
	3rd	150.2	180.4	109.9	133.1	107.3	102.6	143.7	98.7	133.6	111.2	115.3	142		3ème
	4th	150.5	180.3	110.3	134.4	106.8	102.5	148.1	98.6	131.0	111.2	115.2	142.6		4ème
2015	1st	149.7	180.3	110.5	135.6	106.6	102.6	150.5	98.6	131.1	115.1	115.2	142.9	2015	1er
	2nd	168.5	180.1	110.4	135	106.2	102.6	150.1	98.6	131.5	115.1	115.2	149.8		2ème
	3rd	152.2	180.8	115.3	135.8	107.6	101.9	153.8	98.6	133.7	115.1	113.6	144.5		3ème
	4th	151.6	181.3	115.9	137.1	107.6	102	157.2	98.6	133.7	115.1	112.7	144.7		4ème
2016	1st	155.1	180.9	114.3	133.2	107.6	101.8	158.3	99	133.7	120.5	112.6	145.7	2016	1er
	2nd	157.3	180.8	111.8	131.7	107.6	101.8	157.6	98.1	133.7	120.5	112.5	146		2ème
<b>Port Vila</b>															
2012	1st	145.0	181.8	99.9	127.9	106.6	101.4	145.7	97.6	136.8	106.9	107.4	138.3	2012	1er
	2nd	146.2	182.2	102.1	125.9	106.7	100.5	145.7	97.6	137.4	106.7	109.7	138.5		2ème
	3rd	146.6	182.3	104.1	125.2	107.9	100.1	145.5	97.7	138.0	106.7	109.9	138.7		3ème
	4th	146.2	182.2	104.3	125.2	108.0	100.1	145.4	97.8	142.0	106.7	113.1	138.8		4ème
2013	1st	147.3	182.1	104.6	128.5	109.1	101.0	146.2	98.1	143.3	109.4	111.7	140.3	2013	1er
	2nd	147.6	182.4	106.6	129.3	106.4	101.1	146.5	98.2	140.4	109.9	114.3	140.5		2ème
	3rd	147.9	182.5	108.4	129.3	106.5	101.3	146.1	97.7	139.0	109.9	114.6	140.6		3ème
	4th	148.8	183.8	108.4	129.3	106.4	101.3	146.1	97.7	135.3	109.9	114.6	140.8		4ème
2014	1st	150.0	183.8	108.4	129.3	106.4	101.3	146.1	97.7	134.1	110.5	114.8	141.3	2014	1er
	2nd	150.6	184.3	110.6	128.3	106.3	101.6	145.2	98.1	136.3	110.6	115.5	141.4		2ème
	3rd	150.7	185.2	111.4	128.6	106.4	102.5	146.1	98.1	136.0	110.6	115.2	141.7		3ème
	4th	151.4	185.2	111.7	130.0	106.1	102.5	151.4	98.1	133.0	110.6	115.2	142.5		4ème
2015	1st	150.6	185.3	112.0	131.3	105.7	102.6	153.1	98.1	132.8	115.3	115.2	142.8	2015	1er
	2nd	173.6	185.3	112.0	130.6	105.2	102.6	152.5	98.1	133.1	115.3	114.8	151.0		2ème
	3rd	153.8	186.0	118.0	131.8	107.7	101.8	157.0	98.1	135.6	115.3	114.3	144.8		3ème
	4th	152.9	186.4	118.4	132.9	108.0	101.9	160.7	98.1	135.7	115.3	113.8	145.0		4ème
2016	1st	156.3	186.4	115.9	128.6	108.5	101.9	162.1	98.1	133.7	120.8	113.8	145.7	2016	1er
	2nd	159.9	185.9	112.6	126.7	107.9	101.8	161.0	97.1	133.7	120.8	113.7	146.2		2ème
<b>Luganville</b>															
2012	1st	145.3	153.3	93.5	156.6	106.4	103.1	134.0	99.5	123.5	110.9	106.0	139.8	2012	1er
	2nd	144.4	155.4	94.8	156.6	106.5	101.1	134.2	99.3	124.0	110.9	111.2	139.7		2ème
	3rd	144.6	155.6	96.5	156.8	106.3	101.1	134.2	99.5	124.8	110.9	111.1	139.9		3ème
	4th	144.3	155.6	96.7	157.5	106.1	101.1	134.3	101.5	124.8	110.9	110.8	140.0		4ème
2013	1st	146.5	156.0	98.5	158.4	106.1	101.2	131.0	102.0	125.2	112.4	113.6	141.2	2013	1er
	2nd	147.9	157.5	103.9	158.9	110.5	101.2	126.4	102.0	122.9	112.8	114.8	142.3		2ème
	3rd	148.5	158.1	103.5	158.9	110.6	101.2	126.6	101.8	122.9	112.8	115.9	142.6		3ème
	4th	148.3	158.1	103.1	158.9	110.5	101.2	126.6	101.8	122.9	112.8	113.9	142.4		4ème
2014	1st	148.8	158.1	104.3	158.9	110.9	102.3	126.6	101.8	120.6	112.8	113.9	142.7	2014	1er
	2nd	149.4	158.6	104.3	158.9	112.7	102.3	130.5	101.8	120.6	112.8	113.9	143.3		2ème
	3rd	149.7	157.2	104.6	160.7	112.3	103.4	131.2	101.8	119.9	113.2	115.8	143.7		3ème
	4th	148.7	157.2	105.1	160.5	110.6	102.5	130.9	101.5	119.6	113.3	115.4	143.1		4ème
2015	1st	147.7	156.5	105.1	160.7	112.0	103.2	136.3	101.3	121.5	114.4	115.6	143.2	2015	1er
	2nd	150.0	155.7	104.4	161.0	111.6	102.6	137.5	101.5	122.5	114.4	116.7	144.2		2ème
	3rd	147.4	156.3	105.1	159.0	114.2	102.7	136.6	101.5	128.9	114.4	108.9	142.6		3ème
	4th	148.1	157.3	106.3	161.1	114.6	103.2	138.8	101.5	129.0	114.4	105.9	143.4		4ème
2016	1st	151.8	155.9	108.2	160.5	117.7	101.6	137.8	103.9	126.7	119.2	105.0	145.9	2016	1er
	2nd	148.3	156.9	109.0	162.5	117.7	101.6	139.4	103.9	126.7	119.2	105.0	144.9		2ème