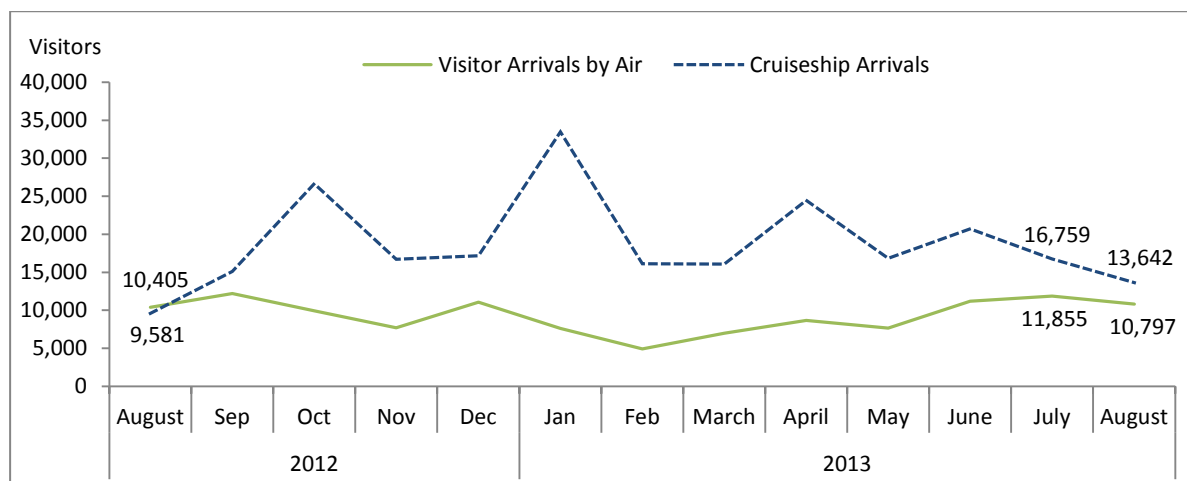


## INTERNATIONAL ARRIVAL STATISTICS

### AUGUST 2013 HIGHLIGHTS

#### OVERVIEW

**Figure 1: Air and Day visitors: August 2012 to August 2013**



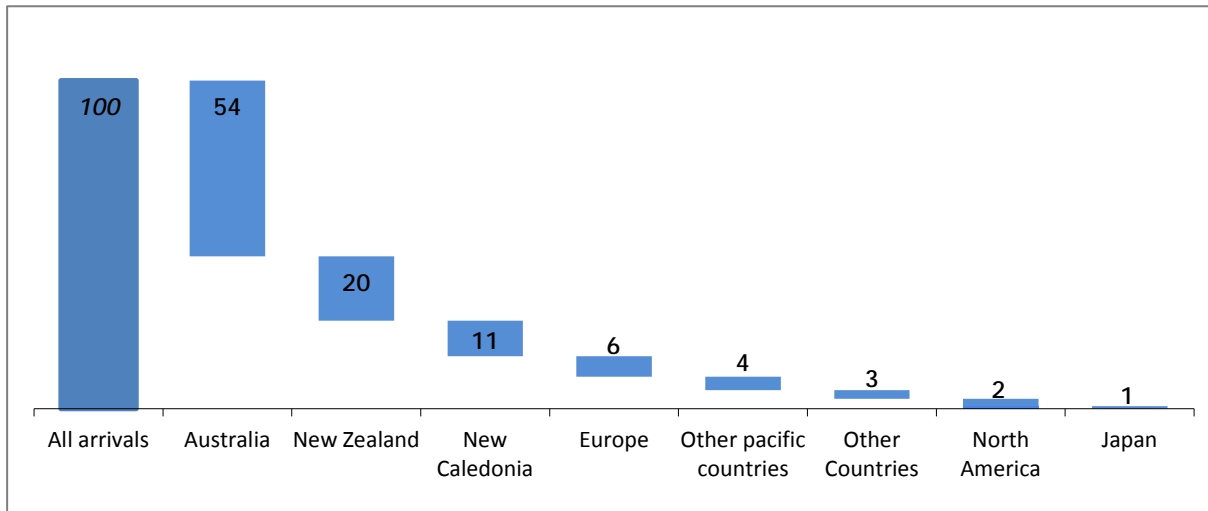
- International arrival statistics in August 2013 registered an increase in visitor arrivals over the same month last year, figures however declined over the previous month.
- Visitor arrivals by air recorded an increase of 4% or 392 visitors, a slight increase over August 2012 rising from 10,405 visitors to 10,797 visitors in August 2013. Figures however declined over the previous month by 9% or 1,058 visitors as holiday visitors slightly falls.
- Cruise ship arrivals increased when compared to August 2012, rising from 9,581 to 13,642 cruise visitors in August 2013 as vessels to Port Vila rise to 7 vessels. However cruise ship arrivals declined by 19% when compared to the previous month of July 2013. Despite the decline cruise visitors continue to supply the highest number of visitors accounting for 56% of total international visitors.

#### PURPOSE OF VISIT FOR VISITORS ARRIVING BY AIR

- Inbound tourist arrivals by air registered 80% or 8,678 visitors for Holiday. Visitor arrivals for business, meetings or conferences make up 9%, Visitors visiting friends and families accounted for 7%, visitors arriving for other purposes including sports or educational activities make up 3%, while visitors on transit to other countries at 1%.

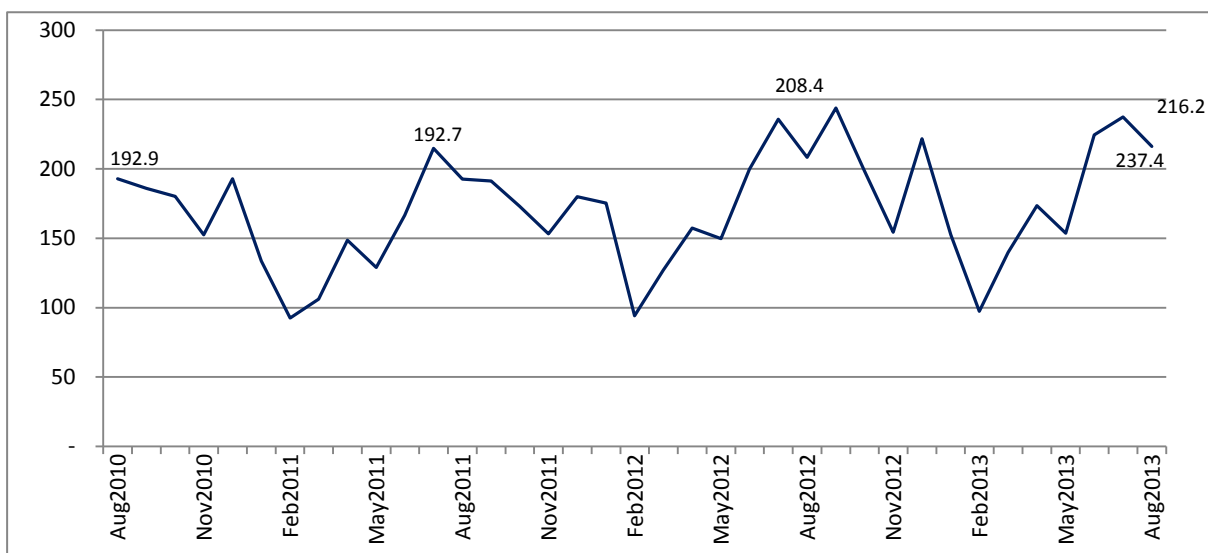
## COUNTRY OF USUAL RESIDENCE FOR VISITORS ARRIVING BY AIR

**Figure 2: Percentage Share of visitors in August 2013 by Country of Usual Residence**



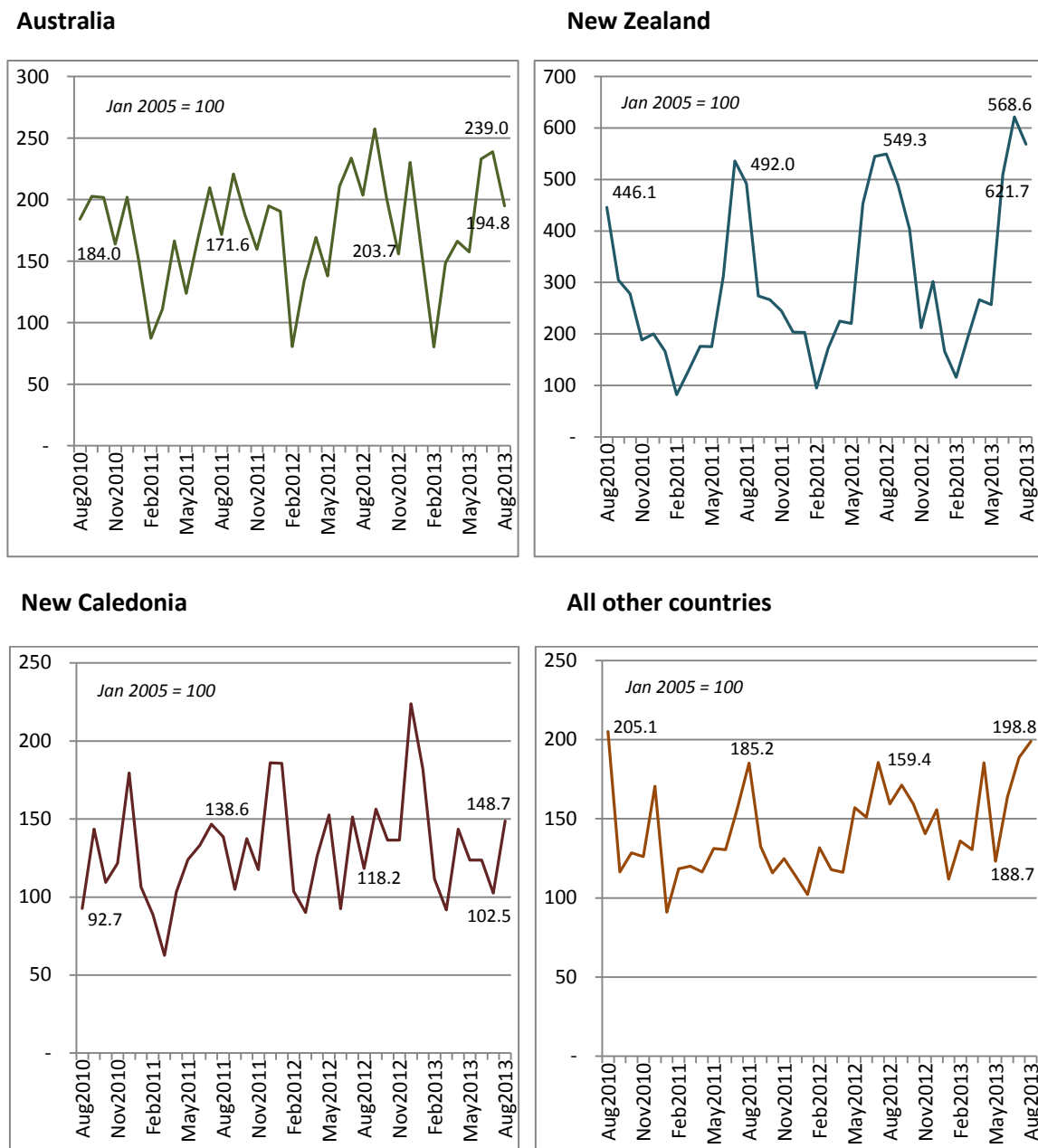
- Australian visitors continues to dominate the number of visitors to Vanuatu, making up 54% or 5,781 visitors, followed by New Zealand at 20%, New Caledonia at 11%, Europe at 6%, Other Pacific countries at 4%, other countries at 3%, North America at 2% and Japan at 1%.
- Tourism in Vanuatu is seasonal, and it is difficult to analyse changes in international arrivals and country of residence by looking at the monthly number of arrivals. Figure 3 below, shows the total number of visitor arrivals and arrivals from Australia, New Zealand, New Caledonia and all other countries combined to show trends in arrivals, with the number of visitors based on an index value of 100 in January 2005. This index allows analysis over time of the real increases and decreases in international air arrivals.

**Figure 3: Index of Total Air Visitor Arrivals, August 2010 to August 2013 (January 2005 = 100)**



- The Total visitor arrivals index shows the overall increasing trend in August 2013 compared to August 2012, where index values increased by 4% .(Figure 3)

**Figure 4: Index of Visitor Arrivals and Country of Usual Residence, August 2010 to August 2013 (January 2005 = 100)**



Note: the vertical axis scale varies in each country chart.

- The major tourism markets of New Caledonia and New Zealand showed high index values of 26% and 4% respectively over the corresponding month of 2012 as visitors from these markets continue to rise in August 2013; however the Australian market declined in index values at 4% reflecting the slight drop in visitors arriving from Australia over August 2012.

#### AVERAGE LENGTH OF STAY FOR VISITORS ARRIVING BY AIR

- In August 2013, visitors by air figure recorded an average length of stay of 11 days, equivalent to August 2012; figures also remained unchanged over the previous month.

## AVERAGE AGE OF VISITORS ARRIVING BY AIR

- Visitor arrivals in August 2013 registered a decline in average age of visitor by 3 years over the same month last year, falling from 44 years to 41 years. However average age rose by 3 years over the previous month rising from 38 years.

## CONCEPTS AND DEFINITIONS

Visitors are non-resident persons spending at least one night in Vanuatu.

Residents are persons who declare themselves to be residents or an intending resident on immigration arrival cards.

## ATTACHED:

Table 1 Summary of Overseas Migration

Table 2 Visitor Arrivals by Purpose of Visit

Table 3 Visitor Arrivals by Country of Usual Residence

Table 4 Overseas Arrivals of Residents by Nationality

Table 5 Visitors Arriving by Air Intended Length of Stay

Table 6 Visitors Arriving by Air Average Age

## NEXT UPDATE

September 2013

## RELEASE DATE

15<sup>th</sup> November, 2013

## PROVINCIAL STATISTICS OFFICES

Torba Province: (678) 7738757

Penama Province: (678) 7738757

Tafea Province: (678) 5980395

Sanma Province: (678) 36542/5936160

Malampa Province: (678) 5676968



**Simil Johnson**  
Government Statistician

**Table 1 : Summary of Overseas Migration**  
**Tableau 1 : Résumé des échanges migratoires avec l'extérieur**

Year	Month	ARRIVALS / ARRIVEES						DEPARTURES / DEPARTURES						Cruiseship Arrivals/ Croisiéristes	Année	Mois
		PORT VILA		LUGANVILLE		TOTAL		PORT VILA		LUGANVILLE		TOTAL				
		Residents Résidents	Visitors Visiteurs	Residents Résidents	Visitors Visiteurs	Residents Résidents	Visitors Visiteurs	Resident Résidents	Visitor Visiteurs	Resident Résidents	Visitors Visiteurs	Resident Résidents	Visitors Visiteurs			
2010		20,531	94,909	522	2,271	21,053	97,180	13,133	104,573	188	1,999	13,321	106,572	140,468	2010	
2011		21,752	91,107	521	2,853	22,273	93,960	12,958	96,836	156	1,954	13,114	98,790	154,938	2011	
2012		22,594	105,611	364	2,550	22,958	108,161	14,803	113,158	134	2,339	14,937	115,497	213,243	2012	
2013		15,333	67,436	324	2,274	15,657	69,710	10,653	76,450	100	2,299	10,753	78,749	158,084	2013	
2009	Aug	1,444	8,737	47	344	1,491	9,081	927	11,096	32	312	959	11,408	3,906	2009	Aoû
2010	Aug	1,565	9,321	35	311	1,600	9,632	909	10,831	8	176	917	11,007	11,304	2010	Aoû
2011	Aug	1,797	9,255	42	367	1,839	9,622	1,201	9,700	16	203	1,217	9,903	7,511	2011	Aoû
2012	Jan	2,380	8,591	42	164	2,422	8,755	1,297	10,852	27	310	1,324	11,162	27,137	2012	Jan
	Feb	1,202	4,642	22	58	1,224	4,700	1,771	5,178	7	55	1,778	5,233	19,613		Fév
	Mar	1,515	6,152	32	191	1,547	6,343	1,143	6,449	3	111	1,146	6,560	16,851		Mar
	Apr	1,793	7,637	49	223	1,842	7,860	998	8,888	4	204	1,002	9,092	15,177		Avr
	May	2,098	7,401	8	73	2,106	7,474	1,135	7,156	-	-	1,135	7,156	17,684		Mai
	Jun	1,746	9,808	8	168	1,754	9,976	1,000	9,072	-	27	1,000	9,099	12,972		Juin
	Jul	1,869	11,471	21	299	1,890	11,770	995	12,740	14	337	1,009	13,077	18,595		Juil
	Aug	1,448	10,154	31	251	1,479	10,405	975	10,726	10	215	985	10,941	9,581		Aoû
	Sep	2,288	11,887	24	295	2,312	12,182	1,013	12,192	15	251	1,028	12,443	15,104		Sep
	Oct	1,717	9,663	29	259	1,746	9,922	1,535	11,688	11	282	1,546	11,970	26,644		Oct
	Nov	2,118	7,431	49	273	2,167	7,704	1,593	8,852	15	230	1,608	9,082	16,697		Nov
	Dec	2,420	10,774	49	296	2,469	11,070	1,348	9,365	28	317	1,376	9,682	17,188		Dec
2013	Jan	1,997	7,415	64	197	2,061	7,612	1,331	11,574	23	325	1,354	11,899	33,491	2013	Jan
	Feb	1,333	4,809	21	122	1,354	4,931	1,919	5,497	14	137	1,933	5,634	16,127		Fév
	Mar	1,656	6,825	40	152	1,696	6,977	1,465	6,799	2	155	1,467	6,954	16,060		Mar
	Apr	2,033	8,182	50	480	2,083	8,662	1,119	9,347	18	399	1,137	9,746	24,477		Avr
	May	2,222	7,327	52	343	2,274	7,670	1,337	8,232	21	302	1,358	8,534	16,817		Mai
	June	2,250	10,806	45	400	2,295	11,206	1,160	10,307	11	427	1,171	10,734	20,711		Juin
	July	2,073	11,390	44	465	2,117	11,855	1,057	12,901	9	412	1,066	13,313	16,759		Juil
	Aug	1,769	10,682	8	115	1,777	10,797	1,265	11,793	2	142	1,267	11,935	13,642		Aoû

Source: Immigration Department/Service de l'Immigration

- Nil or less than half final unit shown / Résultat nul ou inférieur au demi de l'unité indiquée

**Table 2 : Visitor Arrivals by Purpose of Visit**  
**Tableau 2 : Arrivées de visiteurs selon le motif du voyage**

Year	Month	VISITORS/VISITEURS							Année	Mois
		Holidays	Visiting Friends and relatives	Business, Meetings/ Conferences	Stop Over	Others, Education, sports	Total Visitors			
		Vacances	Visite à des amis et à la famille	Affaires, réunions ou conférence	Escale	Autres, education, sport	Visiteurs global			
2010		80,681	6,079	9,615	692	113	97,180	2010		
2011		75,821	7,320	9,933	790	96	93,960	2011		
2012		88,085	7,910	11,294	602	270	108,161	2012		
2013		55,855	5,093	6,234	407	2,121	69,710	2013		
2009	Aug	7,615	301	1,090	74	74	9,154	2009	Aoû	
2010	Aug	7,460	668	1,387	107	10	9,632	2010	Aoû	
2011	Aug	7,749	628	1,153	66	26	9,622	2011	Aoû	
2012	Jan	7,280	986	457	23	9	8,755	2012	Jan	
	Feb	3,390	387	833	30	60	4,700		Fév	
	Mar	4,991	455	846	42	9	6,343		Mar	
	Apr	6,596	546	674	29	15	7,860		Avr	
	May	5,928	513	984	34	15	7,474		Mai	
	Jun	7,946	601	1,254	171	4	9,976		Juin	
	Jul	9,877	863	992	32	6	11,770		Juil	
	Aug	8,776	638	929	55	7	10,405		Aoû	
	Sep	10,089	640	1,350	58	45	12,182		Sep	
	Oct	8,071	586	1,192	43	30	9,922		Oct	
	Nov	6,152	491	980	59	22	7,704		Nov	
	Dec	8,989	1,204	803	26	48	11,070		Dec	
2013	Jan	6,315	596	638	63	-	7,612	2013	Jan	
	Feb	3,431	437	856	16	191	4,931		Fév	
	Mar	5,557	594	645	57	124	6,977		Mar	
	Apr	6,874	558	937	28	265	8,662		Avr	
	May	6,029	565	800	33	243	7,670		Mai	
	June	9,152	723	775	62	494	11,206		Juin	
	July	9,819	853	582	89	512	11,855		Juil	
	Aug	8,678	767	1,001	59	292	10,797		Aoû	

Source: Immigration Department/Service de l'Immigration

- Nil or less than half final unit shown / résultat nul ou inférieur au demi de l'unité indiquée

**Table 3 : Visitor Arrivals by Usual Country of Residence**

**Tableau 3 : Arrivées des visiteurs par pays de résidence habituelle**

Year	Month	Australia	New Zealand	New Caledonia	Other Pacific Countries	Europe	North America	Japan	Other Countries	TOTAL	Année	Mois
		Australie	Nouvelle-Zélande	Nouvelle-Calédonie	Autres Pays du Pacifique		Amérique du Nord	Japon	Autres pays			
2010		58,760	11,927	11,410	4,719	4,888	2,395	517	2,564	97,180	2010	
2011		57,843	11,399	11,376	3,397	5,265	1,922	630	2,128	93,960	2011	
2012		65,405	14,430	13,138	4,313	5,491	2,094	705	2,585	108,161	2012	
2013		40,827	10,062	8,064	3,119	3,744	1,552	388	1,954	69,710	2013	
2009	Aug	5,192	1,700	615	355	576	284	91	268	9,081	2009	Aoû
2010	Aug	5,458	1,664	728	497	652	276	65	292	9,632	2010	Aoû
2011	Aug	5,090	1,835	1,088	313	760	198	91	247	9,622	2011	Aoû
2012	Jan	5,653	757	1,458	247	341	105	49	145	8,755	2012	Jan
	Feb	2,387	354	814	403	367	130	59	186	4,700		Fév
	Mar	3,970	641	707	277	332	131	52	233	6,343		Mar
	Apr	5,021	838	991	270	335	133	58	214	7,860		Avr
	May	4,091	821	1,198	454	410	219	59	222	7,474		Mai
	Jun	6,248	1,690	726	310	523	203	52	224	9,976		Juin
	Jul	6,937	2,032	1,188	433	633	216	95	236	11,770		Juil
	Aug	6,043	2,049	928	298	646	181	58	202	10,405		Aoû
	Sep	7,640	1,827	1,227	451	462	231	59	285	12,182		Sep
	Oct	5,960	1,505	1,072	334	576	216	41	218	9,922		Oct
	Nov	4,622	790	1,071	293	505	156	55	212	7,704		Nov
	Dec	6,833	1,126	1,758	543	361	173	68	208	11,070		Dec
2013	Jan	4,591	621	1,428	231	364	135	32	210	7,612	2013	Jan
	Feb	2,448	429	876	440	340	154	26	218	4,931		Fév
	Mar	4,405	718	720	344	388	135	36	231	6,977		Mar
	Apr	4,931	994	1,126	522	533	222	58	276	8,662		Avr
	May	4,669	959	971	293	374	165	62	177	7,670		Mai
	June	6,911	1,901	971	461	419	279	39	225	11,206		Juin
	July	7,091	2,319	805	384	654	217	47	338	11,855		Juil
	Aug	5,781	2,121	1,167	444	672	245	88	279	10,797		Aoû

Source: Immigration Department / Service de l'Immigration

**Table 4 : Overseas Arrivals of Residents by Nationality**

**Tableau 4 : Arrivées des résidents par nationalité**

Year	Month	Ni-Vanuatu	Australian Australien	French Français	British Anglais	New Zealander Néo- Zélandais	Asian Asiatiques	Pacific Islanders Autres pays du Pacifique	North Americans Américain du Nord	Other countries Autres pays	TOTAL	Année	Mois
2010		11,794	3,700	1,894	132	1,436	504	768	496	330	21,053	2010	
2011		12,508	3,867	1,802	244	1,370	719	1,090	352	321	22,273	2011	
2012		14,317	3,629	1,526	203	1,236	696	686	370	295	22,958	2012	
2013		8,878	2,677	1,176	153	901	586	712	315	259	15,657	2013	
2010	Aug	777	282	171	12	107	63	113	43	32	1,600	2010	Aoû
2011	Aug	1,030	327	144	12	130	58	87	28	23	1,839	2011	Aoû
2012	Jan	1,617	306	159	17	107	59	115	26	16	2,422	2012	Jan
	Feb	619	232	76	15	119	46	67	29	21	1,224		Fév
	Mar	783	307	147	24	109	70	52	23	32	1,547		Mar
	Apr	1,112	327	102	15	110	76	41	37	22	1,842		Avr
	May	1,348	330	164	10	107	60	43	27	17	2,106		Mai
	June	1,139	255	97	21	91	69	46	18	18	1,754		Juin
	Jul	1,155	288	185	21	94	44	50	37	16	1,890		Juil
	Aug	814	282	105	18	90	51	47	41	31	1,479		Aoû
	Sep	1,650	283	98	11	109	57	44	30	30	2,312		Sep
	Oct	948	378	137	15	86	62	61	24	35	1,746		Oct
	Nov	1,442	304	146	18	99	36	56	35	31	2,167		Nov
	Dec	1,690	337	110	18	115	66	64	43	26	2,469		Dec
2013	Jan	983	391	236	18	158	73	116	51	35	2,061	2013	Jan
	Feb	688	270	93	12	84	62	87	26	32	1,354		Fév
	Mar	915	322	124	16	120	74	63	33	29	1,696		Mar
	Apr	1,259	352	160	21	114	63	56	30	28	2,083		Avr
	May	1,559	297	110	17	99	70	48	34	40	2,274		Mai
	June	1,386	353	153	31	124	94	83	44	27	2,295		Juin
	July	1,074	390	162	33	112	75	192	41	38	2,117		Juil
	Aug	1,014	302	138	5	90	75	67	56	30	1,777		Aoû

Source: Immigration Department / Service de l'Immigration



**Table 5 : Visitors Arriving by Air Intended Length of Stay**

**Tableau 5 : Arrivée des Visiteurs à longue durée de Séjour**

Year	Month	AVERAGE INTENDED LENGTH OF STAY / LA MOYENNE DE LONGUE DUREE DE SEJOUR			Année	Mois
		Port Vila	Luganville	Vanuatu		
2009	Aug	10.3	11.4	10.9	2009	Aoû
2010	Aug	8.4	9.0	8.7	2010	Aoû
2011	Jan	8.6	9.4	9.0	2011	Jan
	Feb	8.4	11.4	9.9		Fév
	Mar	8.8	8.3	8.6		Mar
	Apr	8.2	13.8	11.0		Avr
	May	9.1	10.4	9.8		Mai
	Jun	8.6	12.6	10.6		Juin
	Jul	9.0	10.4	9.7		Juil
	Aug	9.0	10.8	9.9		Aoû
	Sep	8.7	9.6	9.2		Sep
	Oct	8.0	9.0	8.5		Oct
	Nov	8.1	11.0	9.6		Nov
	Dec	12.0	13.5	12.8		Déc
2012	Jan	10.3	11.1	10.7	2012	Jan
	Feb	9.3	10.7	10.0		Fév
	Mar	9.7	11.2	10.5		Mar
	Apr	9.7	10.8	10.2		Avr
	May	9.8	12.6	11.2		Mai
	Jun	9.5	11.7	10.6		Juin
	Jul	11.4	11.5	11.5		Juil
	Aug	10.4	10.5	10.5		Aoû
	Sep	9.5	11.0	10.3		Sep
	Oct	10.4	10.5	10.5		Oct
	Nov	8.9	9.0	9.0		Nov
	Dec	8.9	12.7	10.8		Dec
2013	Jan	11.6	11.2	11.4	2013	Jan
	Feb	15.6	9.4	12.5		Fév
	Mar	10.1	11.2	10.6		Mar
	Apr	10.7	10.8	10.8		Avr
	May	9.5	12.6	11.0		Mai
	June	9.2	11.7	10.4		Juin
	July	10.0	12.0	11.0		Juil
	Aug	9.5	13.2	11.3		Aoû

Source: Immigration Department/Service de l'Immigration

**Table 6 : Visitors Arriving by Air Average Age****Tableau 6 : Arrivée des Visiteurs par Age moyen**

Year	Month	AVERAGE AGE OF VISITORS / L'AGE MOYEN DES VISITEURS			Année	Mois
		Port Vila	Luganville	Vanuatu		
2009	Aug	39.3	42.9	41.1	2009	Aoû
2010	Aug	41.2	46.0	43.6	2010	Aoû
2011	Jan	32.9	38.4	35.7	2011	Jan
	Feb	35.4	43.5	39.4		Fév
	Mar	41.0	45.3	43.2		Mar
	Apr	37.0	21.9	29.5		Avr
	May	40.9	47.2	44.1		Mai
	Jun	39.8	39.4	39.6		Juin
	Jul	38.3	41.5	39.9		Juil
	Aug	41.4	36.7	39.0		Aoû
	Sep	38.6	43.1	40.9		Sep
	Oct	39.2	40.7	39.9		Oct
	Nov	38.7	36.8	37.7		Nov
	Dec	44.8	37.0	40.9		Déc
2012	Jan	34.0	36.5	35.2	2012	Jan
	Feb	38.7	45.9	42.3		Fév
	Mar	38.0	42.9	40.5		Mar
	Apr	38.0	42.9	40.5		Avr
	May	39.7	53.3	46.5		Mai
	Jun	37.9	29.7	33.8		Juin
	Jul	38.4	41.0	39.7		Juil
	Aug	41.5	46.5	44.0		Aoû
	Sep	36.5	38.3	37.4		Sep
	Oct	41.5	46.5	44.0		Oct
	Nov	36.6	41.6	39.1		Nov
	Dec	36.6	36.9	36.8		Dec
2013	Jan	35.4	44.2	39.8	2013	Jan
	Feb	32.0	46.4	39.2		Fév
	Mar	37.0	41.5	39.2		Mar
	Apr	38.1	34.4	36.2		Avr
	May	41.7	46.7	44.2		Mai
	June	37.0	37.5	37.2		Juin
	July	34.6	41.5	38.0		Juil
	Aug	38.1	43.7	40.9		Aoû

Source: Immigration Department/Service de l'Immigration