

## STATISTICS UPDATE: CONSUMER PRICE INDEX

### SEPTEMBER QUARTER 2012 HIGHLIGHTS

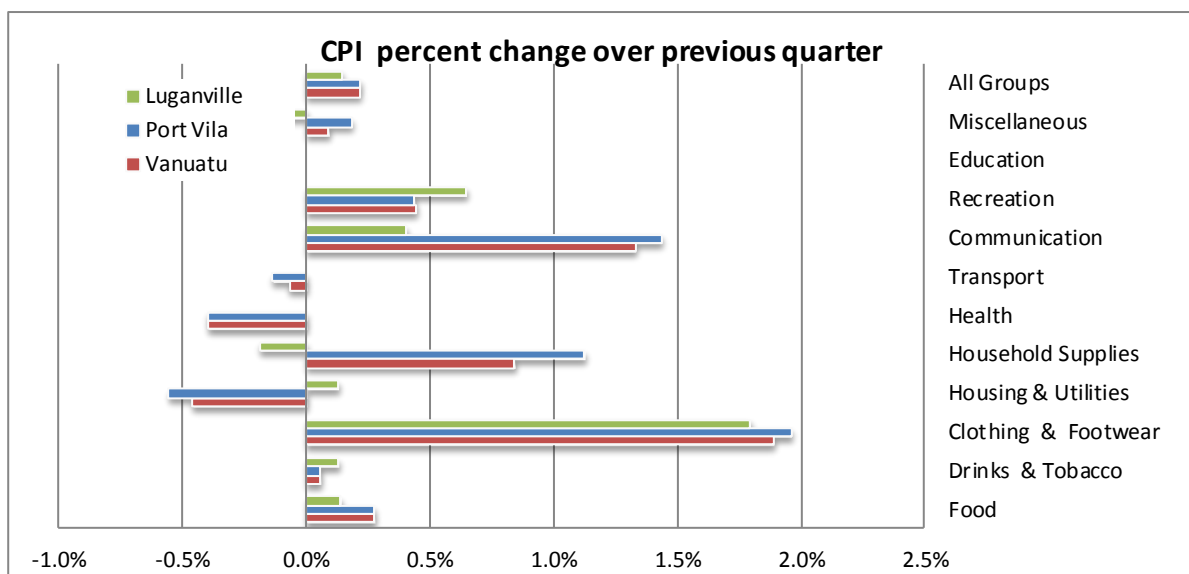
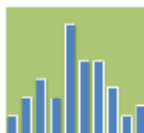


Figure 1: CPI per cent change over previous quarter

#### CPI QUARTERLY MOVEMENT

The Consumer Price Index (CPI) of September 2012 indicated a slight increase of 0.1%. Port Vila and Luganville index both rose by 0.1% respectively, when compared to the previous quarter. The following expenditure groups contributed to the increase in the CPI: Clothing and footwear (+1.9%); and Household Supplies (+0.8%). The main contributor to the movement was the rise in the prices of Women’s clothing and Households appliances, utensils and tools. Slight increases were also shown for the following groups: Food (+0.3%), Recreation (+0.4%) and Communication (+0.2%). Expenditure groups reflecting a decline in prices include Housing and Utilities (-0.5%), health (-0.4%), and Transport (-0.1%). These decreases were due to price reductions in rent, Health services, and Public transport.



## CPI ANNUAL MOVEMENT

When compared to the September quarter of 2011, the Vanuatu index increased by 1.1%. Port Vila and Luganville index both also rose by 1.1% respectively when compared to the corresponding quarter of 2011. At national level, the expenditure groups that contribute to the increase over the same quarter of last year were: Miscellaneous (+9.8%), Household supplies (+7.4%), Transport (+2.4%), Education (+1.6%), Food (+1.3%); and Drinks and Tobacco (+0.3%). The increases in these expenditure groups were the result of the increase in Furniture and furnishings, Public transport, Tertiary Education, Dairy and related products and Alcohol. However, the following groups; Health (-1.6%), Housing and Utilities (-1.5%), Communication (-0.8%), Recreation (-0.2%) and Clothing and Footwear (-0.1%) recorded only offsetting falls.

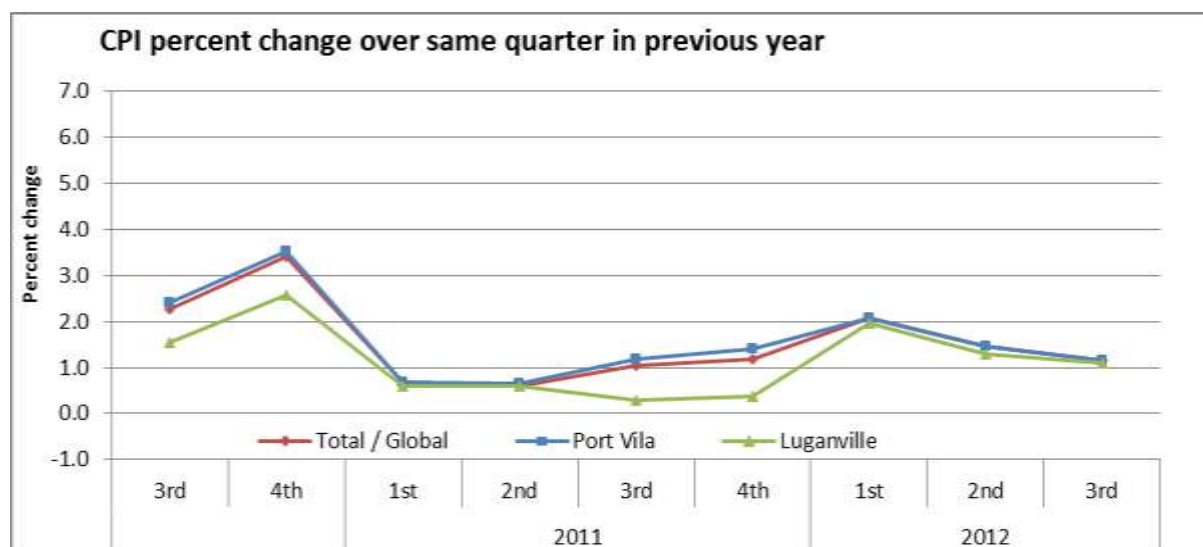


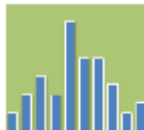
Figure 2: CPI per cent change over same quarter in previous year

## UNDERLYING INFLATION

'Underlying inflation' is a measure derived from the CPI excluding items which typically have unstable or volatile prices; because of things like seasonal variation or policy decisions. Underlying inflation decreased by (-0.2%) in September quarter of 2012 compared to the previous quarter (June 2012). Meanwhile, it recorded an increase of 1.9% over the same quarter of 2011.

## CONCEPTS AND DEFINITIONS

The Consumer Price Index (CPI) is used to measure the changes in the prices of goods and services purchased by households in Port Vila and Luganville over a period of time. The separate indices for these two major commercial centres are then combined to create the Vanuatu CPI.



This change in prices is sometimes called inflation. Retail stores, supermarkets, liquor outlets, transport operators, service stations and other providers of goods and services help supply the Vanuatu National Statistics Office with the information to calculate the CPI.

Prices are collected for exactly the same goods and services each quarter. This ensures that changes in the cost of goods and services over time are not due to changes in the quantity or quality of the goods and services purchased.

#### ATTACHED:

Table 1 Consumer Price Index: All Items

Table 2 Consumer Price Index: Expenditure Groups

#### NEXT UPDATE (QUARTERLY)

#### RELEASE DATE

December

15<sup>th</sup> February, 2013

#### MORE INFORMATION

For statistical enquiries about this topic, please contact:

National Statistics Office: (678) 22110/22111 – email: [stats@vanuatu.gov.vu](mailto:stats@vanuatu.gov.vu)

#### NATIONAL STATISTICS OFFICES IN THE PROVINCES

Torba Province: (678) 5522320

Sanma Province: (678) 36542/5522316

Penama Province: (678) 5522318

Malampa Province: (678) 5522317

Tafea Province: (678) 5522319

A handwritten signature in blue ink, appearing to read 'Simil Johnson'.

**Simil Johnson**  
Government Statistician



**Table 1 Consumer Price Index**

**Base: 1st Quarter 2000 = 100**

**Tableau 1 Indice des prix à la consommation**

**Base: 1<sup>er</sup> Trimestre 2000 = 100**

| Year | Quarter | Consumer Price Indices            |           |            | <i>Underlying</i>             | Rate of Change (%)                                    |           |            | Rate of Change (%)                                                                                               |           |            | Année | Trimestre |
|------|---------|-----------------------------------|-----------|------------|-------------------------------|-------------------------------------------------------|-----------|------------|------------------------------------------------------------------------------------------------------------------|-----------|------------|-------|-----------|
|      |         | Indice des prix à la consommation |           |            | <i>Inflation Index</i>        | Variation par rapport                                 |           |            | Variation                                                                                                        |           |            |       |           |
|      |         | Total / Global                    | Port Vila | Luganville | <i>Inflation sous-jacente</i> | Total / Global                                        | Port Vila | Luganville | Total / Global                                                                                                   | Port Vila | Luganville |       |           |
|      |         |                                   |           |            |                               | <b>Over Previous Year / à l'année précédente</b>      |           |            | <b>4th Quarter over 4th Quarter of previous year / du 4ème trimestre au 4ème trimestre de l'année précédente</b> |           |            |       |           |
| 2008 |         | 126.7                             | 126.1     | 129.4      | 119.6                         | 4.8                                                   | 4.6       | 5.7        | 5.8                                                                                                              | 5.4       | 7.3        | 2008  |           |
| 2009 |         | 132.1                             | 131.5     | 134.7      | 123.6                         | 4.3                                                   | 4.3       | 4.1        | 2.3                                                                                                              | 2.3       | 2.3        | 2009  |           |
| 2010 |         | 135.8                             | 135.4     | 137.6      | 122.3                         | 2.8                                                   | 2.9       | 2.1        | 2.8                                                                                                              | 3.0       | 2.1        | 2010  |           |
|      |         |                                   |           |            |                               | <b>Over Previous Quarter / au trimestre précédent</b> |           |            | <b>Over Same Quarter of previous year / au même trimestre de l'année précédente</b>                              |           |            |       |           |
| 2008 | 1st     | 123.7                             | 123.2     | 126.1      | 115.6                         | 1.6                                                   | 1.4       | 2.4        | 3.5                                                                                                              | 3.6       | 3.3        | 2008  | 1er       |
|      | 2nd     | 125.6                             | 125.3     | 127.3      | 117.9                         | 1.6                                                   | 1.7       | 0.9        | 3.9                                                                                                              | 3.9       | 4.1        |       | 2ème      |
|      | 3rd     | 128.6                             | 127.9     | 132.0      | 122.4                         | 2.4                                                   | 2.1       | 3.7        | 6.0                                                                                                              | 5.5       | 8.1        |       | 3ème      |
|      | 4th     | 128.8                             | 128.1     | 132.2      | 122.5                         | 0.2                                                   | 0.2       | 0.2        | 5.8                                                                                                              | 5.4       | 7.3        |       | 4ème      |
| 2009 | 1st     | 131.2                             | 130.7     | 133.5      | 123.7                         | 1.9                                                   | 2.0       | 1.0        | 6.1                                                                                                              | 6.1       | 5.9        | 2009  | 1er       |
|      | 2nd     | 132.3                             | 131.9     | 134.1      | 123.9                         | 0.8                                                   | 0.9       | 0.4        | 5.3                                                                                                              | 5.3       | 5.3        |       | 2ème      |
|      | 3rd     | 133.0                             | 132.4     | 135.9      | 124.0                         | 0.5                                                   | 0.4       | 1.3        | 3.4                                                                                                              | 3.5       | 3.0        |       | 3ème      |
|      | 4th     | 131.8                             | 131.1     | 135.3      | 122.7                         | -0.9                                                  | -1.0      | -0.4       | 2.3                                                                                                              | 2.3       | 2.3        |       | 4ème      |
| 2010 | 1st     | 134.9                             | 134.6     | 136.3      | 123.3                         | 2.4                                                   | 2.7       | 0.7        | 2.8                                                                                                              | 3.0       | 2.1        | 2010  | 1er       |
|      | 2nd     | 135.9                             | 135.6     | 137.1      | 121.7                         | 0.7                                                   | 0.7       | 0.6        | 2.7                                                                                                              | 2.8       | 2.2        |       | 2ème      |
|      | 3rd     | 136.0                             | 135.6     | 138.0      | 122.0                         | 0.1                                                   | 0.0       | 0.7        | 2.3                                                                                                              | 2.4       | 1.5        |       | 3ème      |
|      | 4th     | 136.3                             | 135.7     | 138.8      | 122.2                         | 0.2                                                   | 0.1       | 0.6        | 3.4                                                                                                              | 3.5       | 2.6        |       | 4ème      |
| 2011 | 1st     | 135.8                             | 135.5     | 137.1      | 122.6                         | -0.4                                                  | -0.1      | -1.2       | 0.7                                                                                                              | 0.7       | 0.6        | 2011  | 1er       |
|      | 2nd     | 136.7                             | 136.5     | 137.9      | 122.3                         | 0.7                                                   | 0.7       | 0.6        | 0.6                                                                                                              | 0.7       | 0.6        |       | 2ème      |
|      | 3rd     | 137.4                             | 137.2     | 138.4      | 124.3                         | 0.5                                                   | 0.5       | 0.4        | 1.0                                                                                                              | 1.2       | 0.3        |       | 3ème      |
|      | 4th     | 137.9                             | 137.6     | 139.3      | 124.5                         | 0.4                                                   | 0.3       | 0.7        | 1.2                                                                                                              | 1.4       | 0.4        |       | 4ème      |
| 2012 | 1st     | 138.6                             | 138.3     | 139.8      | 126.2                         | 0.5                                                   | 0.5       | 0.4        | 2.1                                                                                                              | 2.1       | 2.0        | 2012  | 1er       |
|      | 2nd     | 138.7                             | 138.5     | 139.7      | 126.9                         | 0.1                                                   | 0.1       | -0.1       | 1.5                                                                                                              | 1.5       | 1.3        |       | 2ème      |
|      | 3rd     | 138.9                             | 138.7     | 139.9      | 126.6                         | 0.1                                                   | 0.1       | 0.1        | 1.1                                                                                                              | 1.1       | 1.1        |       | 3ème      |

**Table 2 Consumer Price Indices by Expenditure Group**  
**Tableau 2 Indice des prix à la consommation par poste de dépense**

**Base: 1st Quarter 2000 = 100**  
**Base: 1<sup>er</sup> Trimestre 2000 = 100**

| Year              | Quarter | Food and Tobacco<br>Produits son alcoolisé et tabac<br>alimentaires | Alcoholic drinks<br>and Tobacco<br>son alcoolisée<br>et tabac | Clothing &<br>Footwear<br>Habillement | Housing &<br>Utilities<br>Loyer, eau,<br>et énergie<br>etc. | Household<br>Supplies<br>Mobilier et<br>équipement<br>ménager etc. | Health<br>Santé | Transport | Communication | Recreation<br>Loisir | Education | Miscellaneous<br>Autres | All<br>Groups<br>Indice<br>Global | Année | Trimestre |
|-------------------|---------|---------------------------------------------------------------------|---------------------------------------------------------------|---------------------------------------|-------------------------------------------------------------|--------------------------------------------------------------------|-----------------|-----------|---------------|----------------------|-----------|-------------------------|-----------------------------------|-------|-----------|
| <b>Vanuatu</b>    |         |                                                                     |                                                               |                                       |                                                             |                                                                    |                 |           |               |                      |           |                         |                                   |       |           |
| 2010              | 1st     | 140.0                                                               | 170.2                                                         | 100.7                                 | 128.0                                                       | 104.2                                                              | 101.0           | 146.4     | 98.7          | 131.3                | 100.9     | 102.3                   | 134.9                             | 2010  | 1er       |
|                   | 2nd     | 141.7                                                               | 172.1                                                         | 100.7                                 | 129.7                                                       | 103.6                                                              | 101.4           | 146.5     | 98.7          | 130.1                | 101.0     | 102.3                   | 135.9                             |       | 2ème      |
|                   | 3rd     | 141.6                                                               | 172.4                                                         | 100.4                                 | 129.9                                                       | 103.8                                                              | 101.1           | 147.5     | 98.7          | 130.1                | 101.0     | 102.2                   | 136.0                             |       | 3ème      |
|                   | 4th     | 142.2                                                               | 173.9                                                         | 100.5                                 | 129.6                                                       | 104.1                                                              | 100.5           | 147.7     | 98.9          | 130.1                | 101.0     | 102.2                   | 136.3                             |       | 4ème      |
| 2011              | 1st     | 140.8                                                               | 172.1                                                         | 100.5                                 | 129.3                                                       | 103.7                                                              | 101.6           | 147.8     | 98.9          | 130.2                | 104.4     | 102.1                   | 135.8                             | 2011  | 1er       |
|                   | 2nd     | 141.8                                                               | 173.5                                                         | 101.5                                 | 131.7                                                       | 101.6                                                              | 101.6           | 150.5     | 98.8          | 129.7                | 104.1     | 102.4                   | 136.7                             |       | 2ème      |
|                   | 3rd     | 144.0                                                               | 177.2                                                         | 102.6                                 | 131.7                                                       | 100.3                                                              | 101.8           | 140.4     | 98.8          | 136.3                | 105.9     | 100.2                   | 137.4                             |       | 3ème      |
|                   | 4th     | 143.2                                                               | 177.1                                                         | 99.9                                  | 131.6                                                       | 105.2                                                              | 101.3           | 144.3     | 99.2          | 136.4                | 106.1     | 106.8                   | 137.9                             |       | 4ème      |
| 2012              | 1st     | 144.8                                                               | 176.8                                                         | 98.5                                  | 132.1                                                       | 106.7                                                              | 101.6           | 143.8     | 97.9          | 134.8                | 107.8     | 107.2                   | 138.6                             | 2012  | 1er       |
|                   | 2nd     | 145.5                                                               | 177.6                                                         | 100.6                                 | 130.3                                                       | 106.8                                                              | 100.6           | 143.8     | 97.8          | 135.4                | 107.6     | 109.9                   | 138.7                             |       | 2ème      |
|                   | 3rd     | 145.9                                                               | 177.7                                                         | 102.5                                 | 129.7                                                       | 107.7                                                              | 100.2           | 143.7     | 98.0          | 136.0                | 107.6     | 110.0                   | 138.9                             |       | 3ème      |
| <b>Port Vila</b>  |         |                                                                     |                                                               |                                       |                                                             |                                                                    |                 |           |               |                      |           |                         |                                   |       |           |
| 2010              | 1st     | 139.5                                                               | 175.9                                                         | 101.6                                 | 124.4                                                       | 103.4                                                              | 101.2           | 148.1     | 98.5          | 132.9                | 101.9     | 102.1                   | 134.6                             | 2010  | 1er       |
|                   | 2nd     | 141.4                                                               | 177.5                                                         | 101.6                                 | 126.3                                                       | 102.7                                                              | 101.6           | 148.1     | 98.5          | 131.4                | 102.0     | 102.1                   | 135.6                             |       | 2ème      |
|                   | 3rd     | 140.8                                                               | 177.9                                                         | 101.3                                 | 126.5                                                       | 102.9                                                              | 101.3           | 149.2     | 98.5          | 131.4                | 102.0     | 102.0                   | 135.6                             |       | 3ème      |
|                   | 4th     | 141.2                                                               | 178.3                                                         | 101.3                                 | 126.3                                                       | 103.2                                                              | 100.7           | 149.4     | 98.5          | 131.4                | 102.0     | 102.1                   | 135.7                             |       | 4ème      |
| 2011              | 1st     | 140.2                                                               | 176.0                                                         | 101.3                                 | 126.3                                                       | 102.7                                                              | 100.9           | 149.9     | 98.6          | 131.5                | 106.3     | 102.0                   | 135.5                             | 2011  | 1er       |
|                   | 2nd     | 141.3                                                               | 177.4                                                         | 102.4                                 | 128.8                                                       | 100.3                                                              | 100.9           | 152.8     | 98.6          | 131.2                | 105.9     | 102.0                   | 136.5                             |       | 2ème      |
|                   | 3rd     | 144.4                                                               | 181.8                                                         | 105.1                                 | 127.6                                                       | 99.4                                                               | 101.0           | 141.3     | 98.5          | 138.9                | 106.7     | 99.5                    | 137.2                             |       | 3ème      |
|                   | 4th     | 142.9                                                               | 181.7                                                         | 101.4                                 | 127.5                                                       | 105.1                                                              | 101.4           | 145.7     | 99.0          | 138.8                | 106.9     | 107.4                   | 137.6                             |       | 4ème      |
| 2012              | 1st     | 145.0                                                               | 181.8                                                         | 99.9                                  | 127.9                                                       | 106.6                                                              | 101.4           | 145.7     | 97.6          | 136.8                | 106.9     | 107.4                   | 138.3                             | 2012  | 1er       |
|                   | 2nd     | 146.2                                                               | 182.2                                                         | 102.1                                 | 125.9                                                       | 106.7                                                              | 100.5           | 145.7     | 97.6          | 137.4                | 106.7     | 109.7                   | 138.5                             |       | 2ème      |
|                   | 3rd     | 146.6                                                               | 182.3                                                         | 104.1                                 | 125.2                                                       | 107.9                                                              | 100.1           | 145.5     | 97.7          | 138.0                | 106.7     | 109.9                   | 138.7                             |       | 3ème      |
| <b>Luganville</b> |         |                                                                     |                                                               |                                       |                                                             |                                                                    |                 |           |               |                      |           |                         |                                   |       |           |
| 2010              | 1st     | 143.3                                                               | 144.7                                                         | 97.7                                  | 148.3                                                       | 108.3                                                              | 99.4            | 137.6     | 100.3         | 122.4                | 97.5      | 103.8                   | 136.3                             | 2010  | 1er       |
|                   | 2nd     | 144.3                                                               | 147.3                                                         | 97.6                                  | 148.8                                                       | 108.3                                                              | 99.4            | 138.4     | 100.3         | 122.3                | 97.5      | 103.8                   | 137.1                             |       | 2ème      |
|                   | 3rd     | 146.3                                                               | 147.4                                                         | 97.5                                  | 148.9                                                       | 108.4                                                              | 99.5            | 138.6     | 100.3         | 122.6                | 97.5      | 103.8                   | 138.0                             |       | 3ème      |
|                   | 4th     | 147.4                                                               | 152.7                                                         | 97.5                                  | 147.5                                                       | 108.4                                                              | 99.5            | 138.6     | 101.3         | 122.9                | 97.5      | 103.1                   | 138.8                             |       | 4ème      |
| 2011              | 1st     | 144.5                                                               | 152.7                                                         | 97.7                                  | 145.0                                                       | 109.0                                                              | 106.8           | 137.0     | 100.7         | 122.9                | 97.5      | 103.1                   | 137.1                             | 2011  | 1er       |
|                   | 2nd     | 145.3                                                               | 153.7                                                         | 98.3                                  | 146.7                                                       | 109.3                                                              | 106.8           | 138.8     | 100.1         | 121.4                | 97.6      | 104.8                   | 137.9                             |       | 2ème      |
|                   | 3rd     | 143.9                                                               | 154.9                                                         | 93.0                                  | 155.7                                                       | 104.8                                                              | 107.5           | 135.9     | 100.1         | 121.4                | 102.9     | 104.9                   | 138.4                             |       | 3ème      |
|                   | 4th     | 145.4                                                               | 155.6                                                         | 94.3                                  | 155.3                                                       | 105.6                                                              | 107.6           | 137.0     | 100.5         | 122.8                | 102.9     | 103.1                   | 139.3                             |       | 4ème      |
| 2012              | 1st     | 145.3                                                               | 153.3                                                         | 93.5                                  | 156.6                                                       | 106.4                                                              | 103.1           | 134.0     | 99.5          | 123.5                | 110.9     | 106.0                   | 139.8                             | 2012  | 1er       |
|                   | 2nd     | 144.4                                                               | 155.4                                                         | 94.8                                  | 156.6                                                       | 106.5                                                              | 101.1           | 134.2     | 99.3          | 124.0                | 110.9     | 111.2                   | 139.7                             |       | 2ème      |
|                   | 3rd     | 144.6                                                               | 155.6                                                         | 96.5                                  | 156.8                                                       | 106.3                                                              | 101.1           | 134.2     | 99.5          | 124.8                | 110.9     | 111.1                   | 139.9                             |       | 3ème      |