

VNSO Update Consumer Price Index, March Quarter 2010

Quarterly Inflation

The March quarter Consumer Price Index (CPI) recorded a general price increased of 2.4 percent over December quarter 2009. Port Vila prices went up by 2.7 percent as compared to December quarter of 2009 and Luganville prices slightly increased by 0.7 percent over the same period.

The increases in the prices for Food; Alcoholic Drinks and Tobacco; and Housing and Utilities were the most significant reasons for price increase in March quarter. The increase in the Food index group was caused by the high prices of seasonal Fruit and Vegetables. The

increase in the Alcoholic Drinks and Tobacco group was caused by the increase in the rate of exercise tax on these products. In the Port Vila index, both Alcohol and Tobacco increased compared to the previous quarter, while in Luganville the increase was due mostly to an increase in the price of cigarettes (presumably the increased in alcohol prices will be shown in the June quarter CPI for Luganville). The rise in the index for Housing and Utilities group resulted from the increase in the electricity supply charges in both urban centres of Port Vila and Luganville.

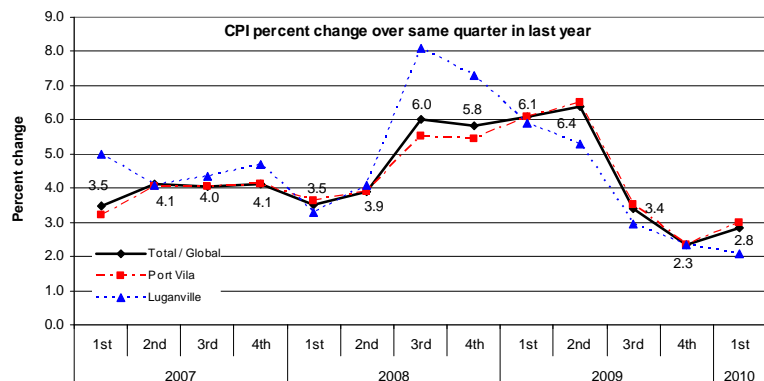
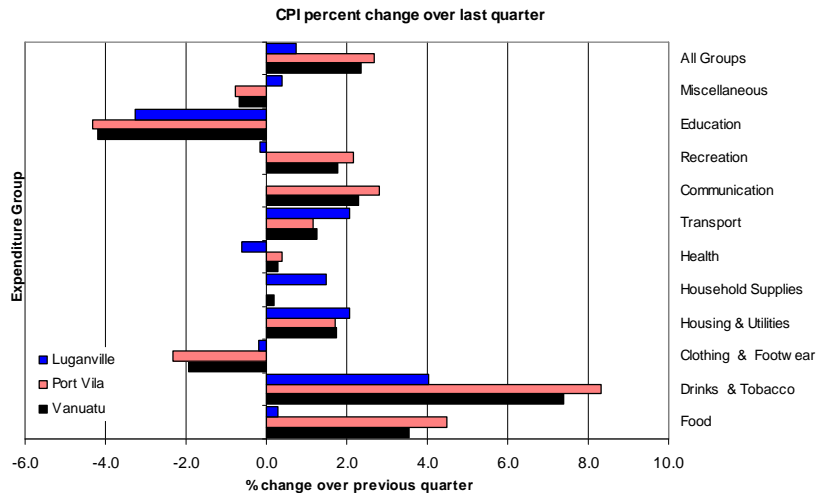
Despite these increases, the Education Expenditure Group decreased by 4.2 percent following the implementation of the free primary education policy. A decrease was also shown in the index for Clothing and Footwear, mainly due to the decrease in the prices for women's and children's clothing. The Health group for Luganville also declined resulting from the decreased in prices for the prescription drugs, the Port Vila Health group price decrease was recorded in the December quarter of 2009.

Annual inflation

When the CPI for the March quarter 2010, is compared with the same quarter in 2009, the index for Vanuatu increased by 2.8 percent, 3.0 percent in Port Vila and 2.1 percent in Luganville. This compares with a "December on December" quarter annual rate of inflation of 2.3 percent for Vanuatu, Port Vila and Luganville.

Underlying inflation

'Underlying inflation' is a measure derived from the CPI excluding items which typically have unstable or volatile prices; because of things like seasonal variation or policy decisions.



Underlying inflation increased by 0.5 percent in March 2010 compared to the previous quarter which had a decrease of 1.0 percent against the December 2009 quarter. The “March on March” annual rate of underlying inflation shows a decrease of 0.3 percent in March 2010 compared with March 2009.

Concepts and definitions

The Consumers Price Index (CPI) is used to measure the changes in the prices of goods and services purchased by households in Port Vila and Luganville over a period of time.

This change in prices is sometimes called inflation. Retail stores, supermarkets, liquor outlets, doctors' surgeries, travel agents, service stations and other providers of goods and services help supply the Vanuatu National Statistics Office with the information to calculate the CPI.

Where possible, prices are collected for exactly the same goods and services each time. This ensures that changes in the cost of goods and services over time are not due to changes in the quantity or quality of the goods and services purchased.

Attached:

Table 1 Consumer Price Index: All Items

Table 2 Consumer Price Index: Expenditure Groups

Forthcoming issues:

<u>Issue (Quarter)</u>	<u>Release Date</u>
March 2010	14 May 2010
June 2010	13 August 2010
September 2010	12 November 2010
December 2010	11 February 2011

More information ...

For statistical enquiries about this topic, please contact:

National Statistics Office
Email: stats@vanuatu.gov.vu



Simil Johnson

Acting Government Statistician



Table 1 Consumer Price Index

Base: 1st Quarter 2000 = 100

Tableau 1 Indice des prix à la consommation

Base: 1^{er} Trimestre 2000 = 100

Year	Quarter	Consumer Price Indices			Underlying	Rate of Change (%)			Rate of Change (%)			Année	Trimestre
		Indice des prix à la consommation			Inflation	Variation par rapport			Variation				
		Total / Global	Port Vila	Luganville	<i>sous-jacente</i> Total / Global	Total / Global	Port Vila	Luganville	Total / Global	Port Vila	Luganville		
						Over Previous Year / à l'année précédente			4th Quarter over 4th Quarter of previous year / du 4ème trimestre au 4ème trimestre de l'année précédente				
2007		120.8	120.6	122.4	113.3	3.9	3.9	4.5	4.1	4.1	4.7	2007	
2008		126.7	126.1	129.4	119.6	4.8	4.6	5.7	5.8	5.4	7.3	2008	
2009		132.9	131.9	134.7	123.6	4.9	4.6	4.1	2.3	2.3	2.3	2009	
						Over Previous Quarter / au trimestre précédent			Over Same Quarter of previous year / au même trimestre de l'année précédente				
2007	1st	119.4	118.9	122.1	111.4	2.1	1.9	3.7	3.5	3.2	5.0	2007	1er
	2nd	120.9	120.6	122.2	113.7	1.3	1.4	0.1	4.1	4.1	4.1		2ème
	3rd	121.3	121.2	122.1	113.9	0.3	0.5	-0.1	4.0	4.0	4.4		3ème
	4th	121.7	121.5	123.2	114.2	0.3	0.2	0.9	4.1	4.1	4.7		4ème
2008	1st	123.7	123.2	126.1	115.6	1.6	1.4	2.4	3.5	3.6	3.3	2008	1er
	2nd	125.6	125.3	127.3	117.9	1.6	1.7	0.9	3.9	3.9	4.1		2ème
	3rd	128.6	127.9	132.0	122.4	2.4	2.1	3.7	6.0	5.5	8.1		3ème
	4th	128.8	128.1	132.2	122.5	0.2	0.2	0.2	5.8	5.4	7.3		4ème
2009	1st	131.2	130.7	133.5	123.7	1.9	2.0	1.0	6.1	6.1	5.9	2009	1er
	2nd	133.6	133.5	134.1	123.9	1.8	2.1	0.4	6.4	6.5	5.3		2ème
	3rd	133.0	132.4	135.9	124.0	-0.5	-0.8	1.3	3.4	3.5	3.0		3ème
	4th	131.8	131.1	135.3	122.7	-0.9	-1.0	-0.4	2.3	2.3	2.3		4ème
2010	1st	134.9	134.6	136.3	123.3	2.4	2.7	0.7	2.8	3.0	2.1	2010	1er

Table 2 Consumer Price Indices by Expenditure Group

Tableau 2 Indice des prix à la consommation par poste de dépense

Base: 1st Quarter 2000 = 100

Base: 1^{er} Trimestre 2000 = 100

Year	Quarter	Food Produits alimentaires	Alcoholic drinks & Tobacco Boisson alcoolisée & tabac	Clothing & Footwear Habillement	Housing & Utilities Loyer, eau, et énergie etc.	Household Supplies Mobilier et équipement ménager etc.	Health Santé	Transport	Communication	Recreation Loisir	Education	Miscellaneous Autres	All Groups Indice Global	Année	Trimestre
Vanuatu															
2008	4th	130.1	154.4	100.8	127.3	103.4	100.0	136.9	100.0	119.2	100.0	100.0	128.8	2008	4ème
2009	1st	133.3	155.1	101.1	127.7	104.8	100.3	145.4	100.7	119.3	104.8	100.3	131.2	2009	1er
	2nd	135.5	158.0	101.1	133.7	103.9	100.0	142.8	100.7	127.7	105.3	100.9	133.6		2ème
	3rd	136.9	158.2	102.4	127.5	104.3	100.0	143.9	100.7	127.6	105.3	102.9	133.0		3ème
	4th	135.2	158.5	102.7	125.8	104.0	100.7	144.6	96.5	129.0	105.3	103.0	131.8		4ème
2010	1st	140.0	170.2	100.7	128.0	104.2	101.0	146.4	98.7	131.3	100.9	102.3	134.9	2010	1er
Port Vila															
2008	4th	128.3	157.3	102.8	124.5	102.9	100.0	137.6	100.0	118.8	100.0	100.0	128.1	2008	4ème
2009	1st	132.0	158.2	102.9	124.5	104.3	100.0	147.7	100.8	118.8	105.9	100.3	130.7	2009	1er
	2nd	134.3	162.0	102.9	131.3	103.4	100.0	144.9	100.8	128.7	106.5	100.9	133.5		2ème
	3rd	135.2	162.2	104.0	124.2	103.8	100.0	146.0	100.8	128.5	106.5	103.2	132.4		3ème
	4th	133.5	162.4	104.0	122.3	103.4	100.8	146.4	95.8	130.1	106.5	102.9	131.1		4ème
2010	1st	139.5	175.9	101.6	124.4	103.4	101.2	148.1	98.5	132.9	101.9	102.1	134.6	2010	1er
Luganville															
2008	4th	138.4	138.8	93.2	141.6	105.9	100.0	133.3	100.0	121.5	100.0	100.0	132.2	2008	4ème
2009	1st	139.7	138.8	94.5	145.4	106.5	102.7	132.9	100.0	122.0	100.8	100.1	133.5	2009	1er
	2nd	141.4	138.8	94.5	145.0	106.1	100.0	132.1	99.8	122.3	100.8	100.4	134.1		2ème
	3rd	145.0	138.8	96.4	145.3	106.5	100.0	132.7	100.0	122.6	100.8	101.0	135.9		3ème
	4th	142.9	139.1	97.9	145.3	106.7	100.0	134.8	100.3	122.6	100.8	103.4	135.3		4ème
2010	1st	143.3	144.7	97.7	148.3	108.3	99.4	137.6	100.3	122.4	97.5	103.8	136.3	2010	1er