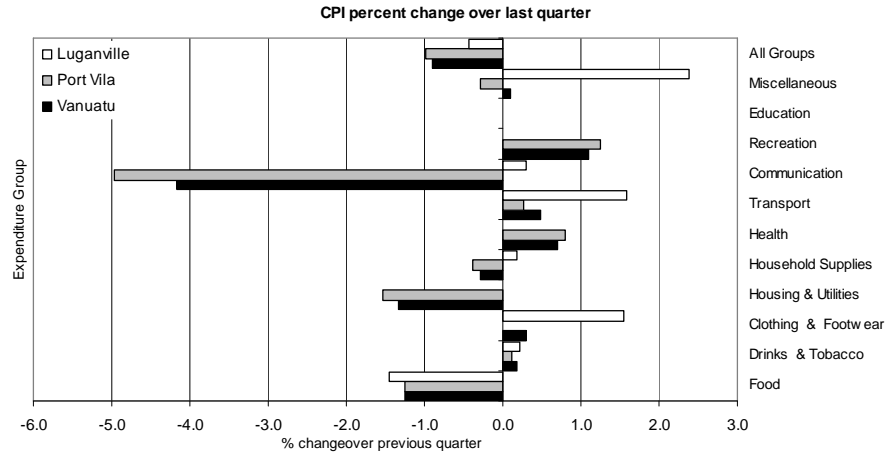


## VNSO Update Consumer Price Index, December Quarter 2009

### Quarterly Inflation

The December quarter Consumer Price Index (CPI) recorded a general price dropped of 0.9 percent over September quarter 2009. Port Vila prices went down by 1.0 percent as compared to September quarter of 2009 and Luganville prices slightly dropped by 0.4 percent over the same period.

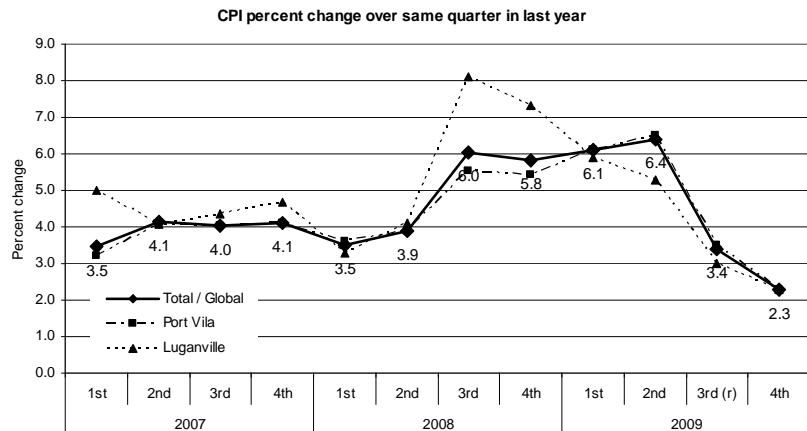
The decrease in the prices for Food, Housing and Utilities, and Communication expenditure groups were the most significant reason for price falls in December quarter. The decline in Food index largely resulted from a dropped in the price of rice for the two urban centres. For the Housing and Utilities; and Communication, the dropped was caused by the price falls for home appliances and mobile phones as a result of promotional activities and Christmas sales taking place around October to December, 2009.



### Annual inflation

The inflationary pressure continues to ease during the December quarter of 2009. The annual inflation (December quarter 2009 over December 2008) for 2009 eased to 2.3 percent from 5.8 percent in 2008.

This was mainly due to lower pressure in food and alcoholic drinks and tobacco expenditure groups which contributed the most to the 2007 and 2008 inflations.



### Underlying inflation

'Underlying inflation' is a measure derived from the CPI excluding items which typically have unstable or volatile prices; because of things like seasonal variation or policy decisions. Underlying inflation was decreased by 1.2 percent in December 2009 compared to the previous quarter which also had a decrease of 0.1 percent against June quarter.

### Concepts and definitions

The Consumers Price Index (CPI) is used to measure the changes in the prices of goods and services purchased by households in Port Vila and Luganville over a period of time.

This change in prices is sometimes called inflation. Retail stores, supermarkets, liquor outlets, doctors' surgeries, travel agents, service stations and other providers of goods and services help supply the Vanuatu National Statistics Office with the information to calculate the CPI.

Where possible, prices are collected for exactly the same goods and services each time. This ensures that changes in the cost of goods and services over time are not due to changes in the quantity or quality of the goods and services purchased.

**Attached:**

Table 1 Consumer Price Index: All Items

Table 2 Consumer Price Index: Expenditure Groups

**Notes**

FORTHCOMING ISSUES

ISSUE (QUARTER)	RELEASE DATE
March 2010	30 April 2010
June 2010	29 July 2010
September 2010	29 October 2010
December 2010	28 January 2011

**More information ...**

For statistical enquiries about this topic, please contact:

National Statistics Office  
Email: [stats@vanuatu.gov.vu](mailto:stats@vanuatu.gov.vu)

**Table 1 Consumer Price Index**  
**Tableau 2 Indice des prix à la consommation**

**Base: 1st Quarter 2000 = 100**  
**Base: 1<sup>er</sup> Trimestre 2000 = 100**

Year	Quarter	Consumer Price Indices			Rate of Change (%)			Rate of Change (%)			Année	Trimestre
		Indice des prix à la consommation			Variation par rapport			Variation				
		Total / Global	Port Vila	Luganville	Total / Global	Port Vila	Luganville	Total / Global	Port Vila	Luganville		
					<b>Over Previous Year / à l'année précédente</b>			<b>4th Quarter over 4th Quarter of previous year / du 4ème trimestre au 4ème trimestre de l'année précédente</b>				
2000		102.0	102.1	101.8	2.5	2.5	3.9	4.1	4.3	4.3	2000	
2001		105.7	105.6	106.4	3.6	3.4	4.5	2.3	2.0	3.8	2001	
2002		107.8	107.9	107.3	2.0	2.2	0.8	2.3	2.4	1.3	2002	
2003		111.0	111.3	109.1	3.0	3.2	1.7	2.9	2.8	2.7	2003	
2004		112.6	112.8	111.7	1.4	1.4	2.4	0.8	0.9	1.6	2004	
2005		113.9	113.7	115.3	1.2	0.8	3.2	1.8	1.3	3.7	2005	
2006		116.3	116.1	117.1	2.0	2.1	1.6	1.9	2.0	1.4	2006	
2007		120.8	120.6	122.4	3.9	3.9	4.5	4.1	4.1	4.7	2007	
2008		126.7	126.1	129.4	4.8	4.6	5.7	5.8	5.4	7.3	2008	
2009		132.4	131.9	134.7	4.5	4.6	4.1	2.3	2.3	2.3	2009	
					<b>Over Previous Quarter / au trimestre précédent</b>			<b>Over Same Quarter of previous year / au même trimestre de l'année précédente</b>				
2007	1st	119.4	118.9	122.1	2.1	1.9	3.7	3.5	3.2	5.0	2007	1er
	2nd	120.9	120.6	122.2	1.3	1.4	0.1	4.1	4.1	4.1		2ème
	3rd	121.3	121.2	122.1	0.3	0.5	-0.1	4.0	4.0	4.4		3ème
	4th	121.7	121.5	123.2	0.3	0.2	0.9	4.1	4.1	4.7		4ème
2008	1st	123.7	123.2	126.1	1.6	1.4	2.4	3.5	3.6	3.3	2008	1er
	2nd	125.6	125.3	127.3	1.6	1.7	0.9	3.9	3.9	4.1		2ème
	3rd	128.6	127.9	132.0	2.4	2.1	3.7	6.0	5.5	8.1		3ème
	4th	128.8	128.1	132.2	0.2	0.2	0.2	5.8	5.4	7.3		4ème
2009	1st	131.2	130.7	133.5	1.9	2.0	1.0	6.1	6.1	5.9	2009	1er
	2nd	133.6	133.5	134.1	1.8	2.1	0.4	6.4	6.5	5.3		2ème
	3rd (r)	133.0	132.4	135.9	-0.5	-0.8	1.3	3.4	3.5	3.0		3ème (r)
	4th	131.8	131.1	135.3	-0.9	-1.0	-0.4	2.3	2.3	2.3		4ème

(r): Please note that the Consumer Price Index for the third quarter 2009 was revised.

**Table 2 Consumer Price Indices by Expenditure Group**

**Tableau 2 Indice des prix à la consommation par poste de dépense**

**Base: 1st Quarter 2000 = 100**

**Base: 1<sup>er</sup> Trimestre 2000 = 100**

Year	Quarter	Food Produits alimentaires	Alcoholic drinks & Tobacco Boisson alcoolisée & tabac	Clothing & Footwear Habillement	Housing & Utilities Loyer, eau, et énergie etc.	Household Supplies Mobilier et équipement ménager etc.	Health Santé	Transport	Communication	Recreation Loisir	Education	Miscellaneous Autres	All Groups Indice Global	Année	Trimestre
<b>Vanuatu</b>															
2008	4th	130.1	154.4	100.8	127.3	103.4	100.0	136.9	100.0	119.2	100.0	100.0	128.8	2008	4ème
2009	1st	133.3	155.1	101.1	127.7	104.8	100.3	145.4	100.7	119.3	104.8	100.3	131.2	2009	1er
	2nd	135.5	158.0	101.1	133.7	103.9	100.0	142.8	100.7	127.7	105.3	100.9	133.6		2ème
	3rd (r)	136.9	158.2	102.4	127.5	104.3	100.0	143.9	100.7	127.6	105.3	102.9	133.0		3ème (r)
	4th	135.2	158.5	102.7	125.8	104.0	100.7	144.6	96.5	129.0	105.3	103.0	131.8		4ème
<b>Port Vila</b>															
2008	4th	128.3	157.3	102.8	124.5	102.9	100.0	137.6	100.0	118.8	100.0	100.0	128.1	2008	4ème
2009	1st	132.0	158.2	102.9	124.5	104.3	100.0	147.7	100.8	118.8	105.9	100.3	130.7	2009	1er
	2nd	134.3	162.0	102.9	131.3	103.4	100.0	144.9	100.8	128.7	106.5	100.9	133.5		2ème
	3rd (r)	135.2	162.2	104.0	124.2	103.8	100.0	146.0	100.8	128.5	106.5	103.2	132.4		3ème (r)
	4th	133.5	162.4	104.0	122.3	103.4	100.8	146.4	95.8	130.1	106.5	102.9	131.1		4ème
<b>Luganville</b>															
2008	4th	138.4	138.8	93.2	141.6	105.9	100.0	133.3	100.0	121.5	100.0	100.0	132.2	2008	4ème
2009	1st	139.7	138.8	94.5	145.4	106.5	102.7	132.9	100.0	122.0	100.8	100.1	133.5	2009	1er
	2nd	141.4	138.8	94.5	145.0	106.1	100.0	132.1	99.8	122.3	100.8	100.4	134.1		2ème
	3rd (r)	145.0	138.8	96.4	145.3	106.5	100.0	132.7	100.0	122.6	100.8	101.0	135.9		3ème (r)
	4th	142.9	139.1	97.9	145.3	106.7	100.0	134.8	100.3	122.6	100.8	103.4	135.3		4ème

(r): Please note that the Consumer Price Index for the third quarter 2009 was revised.